

2014-2015

University of North Texas College of Music



Student Handbook

Contact the CoM

UNT College of Music
1155 Union Circle #311367
(Location: 415 Ave C)
Denton, TX 76203

(940) 565-2791 phone
(940) 565-2002 fax

www.music.unt.edu



A green light to greatness.

Welcome to the College of Music at the University of North Texas. We have put together a very brief introduction to the College and tried to answer a few questions about its history, how it works, and where to get your questions answered. Much of the information that you need can be found on the College website at www.music.unt.edu. Computer labs are located in MU239 and at many other locations across the campus.

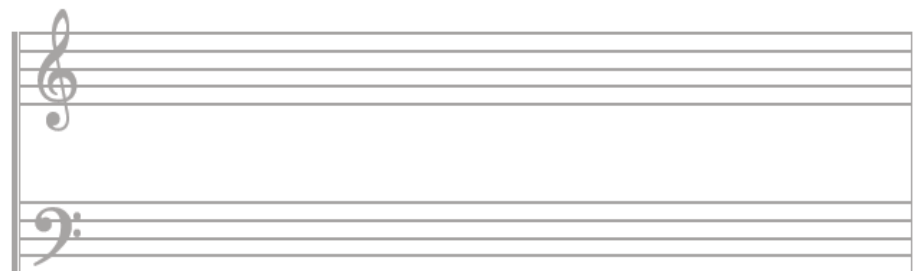
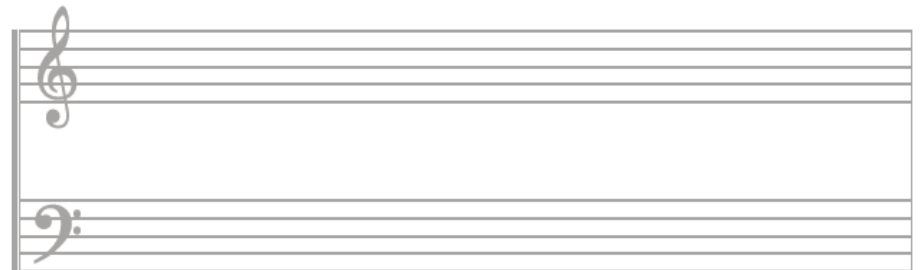
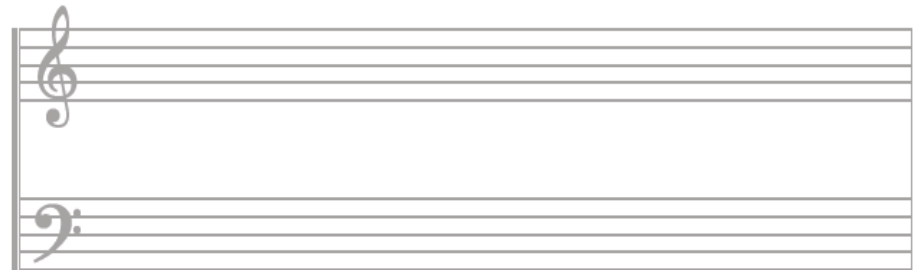
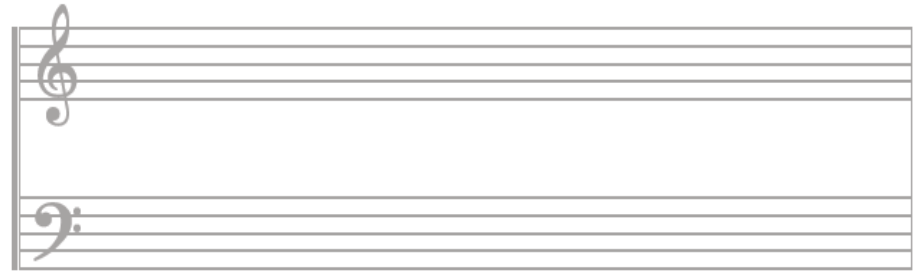
All About UNT

In 1890, the University of North Texas was founded as a school to train teachers. Over one hundred and twenty years later, UNT is a student-centered emerging research university, offering a breadth of disciplines from engineering to visual arts in 12 schools and colleges. As one of Texas' largest universities, UNT offers 98 bachelor's, 82 master's and 36 doctoral degree programs.

With about 36,000 students, UNT is the flagship of the UNT System and has been ranked in the top 4 percent of U.S. colleges and universities by the Carnegie Foundation. UNT takes pride in its outstanding faculty, high academic standards, and diverse student body.

Offering a traditional college experience at an affordable cost, UNT boasts a 20:1 student-faculty ratio and Division I-A athletics. By providing access, welcoming diversity and strengthening our collaborations with our many educational, business and community partners, as well as building new partnerships across the globe, UNT's faculty and staff work each day to prepare students for the challenges they will meet in our changing world.

Through the years, UNT has awarded more than 200,000 bachelor's, master's and doctoral degrees. About 120,000 active alumni live in the Dallas-Fort Worth region (*UNT Fall 2012 Fact Sheet*).



Admissions

Please visit: music.unt.edu/admissions/undergraduate-how-to-apply

Scholarships

Please visit: music.unt.edu/current-students

Degrees

Undergraduate Music Degrees Offered:

Bachelor of Music (BM)

- Composition (COMP)
- Jazz Studies (JAZZ)
- Performance (PERF)
- Theory (MUTH)

Music Education (“General Choral & Instrumental Music w/ Teacher Certification”) (MUTE)

Bachelor of Arts (BA)

- Music Major
- Music Major with emphasis in Music History & Literature

Advising

Who is my academic advisor?

PERF, MUTH, BA	TBD	CHIL211
All International students, BA	Becky King	CHIL211
COMP, JAZZ, BA	Carol Pollard	CHIL211
MUTE*, BA	Ana Martinez	CHIL211

*MUTE majors are also assigned faculty advisors during the sophomore year

When do I see my academic advisor? Anytime you have questions about your study or UNT academic resources, before each semester’s registration, to review your degree plan, to discuss transfer courses, and the semester before graduation.

What is a Degree Plan/Degree Audit? A degree plan is your “contract” with the university listing the requirements for your degree and the courses you will take to fulfill them. This information is available on your Interactive Degree Audit which you may access from the MyUNT Student Center page. You may contact Ana Martinez or Becky King with specific questions about your Interactive Audit.

James C. Scott Dean.....	MU247L
Warren Henry Associate Dean, Academic Affairs.....	MU247D
John C. Scott Associate Dean, Admissions/Scholarships.....	CHIL211D
Jon Nelson Associate Dean, Operations.....	MU247C
Jaymee Haefner Director of Undergraduate Studies.....	CHIL211T
Benjamin Brand Director of Graduate Studies.....	MU317
Richard Sparks Chair, Division of Conducting and Ensembles.....	MU220
John Holt Chair, Division of Instrumental Studies.....	MU129
Steve Harlos Chair, Division of Keyboard Studies.....	MU225
Stephen F. Austin Chair, Division of Vocal Studies.....	MU216
Joseph Klein Chair, Division of Composition Studies.....	MU2005
John Murphy Chair, Division of Jazz Studies.....	MU266
Debbie Rohwer Chair, Division of Music Education.....	MU304
Frank Heidlberger Chair, Division of History, Theory, Ethnomusicology.....	MU1004

Below is a recommended list in which to order your semester classes:

1. PRIVATE LESSONS MUAM 15## or MUAC 15## 2-4 credits

- You will need a class number/code (i.e. #21473) in order to enroll your lesson. The actual day and time for your lesson will be arranged during the first week of the fall semester.

PLEASE BE AWARE THAT DURING THE FIRST WEEK OF CLASSES IT IS YOUR RESPONSIBILITY TO CONTACT YOUR TEACHER TO ARRANGE A LESSON TIME! PLEASE DO THIS AT YOUR EARLIEST CONVENIENCE TO AVOID EXCLUSION.

1a. DEPARTMENTAL (not for credit)

Reserve the weekly departmental (recital) time for your area(s):

- Trumpet: Wednesdays, Noon (Recital Hall)
 - Horn: Fridays, 1:00 p.m. (MPAC 132)
 - Trombone: Wednesdays, Noon (Concert Hall)
 - Tuba: Tuesdays, Noon (Recital Hall)
 - Euphonium: Thursdays, 3:30 p.m. (MU232)
 - Percussion: Fridays, 1 p.m. (Recital Hall)
 - Strings: Thursdays, 1 p.m. (Recital Hall)
 - Woodwinds: Thursdays, Noon (Recital Hall)
- ALSO:
- Clarinet Class, Fridays, 1:00 p.m. (MU232)
 - Oboe Class, Fridays, 1:00 p.m. (TBA)
 - Bassoon Class, Fridays, 1:00 p.m. (MU230)
 - Saxophone: Mondays, Noon (Recital Hall)
- Piano: Thursdays, 4 p.m. (Recital Hall)
 - Organ: Tuesdays, 3 p.m. (Organ Recital Hall, Concert Hall, Main Auditorium)
 - Classical Guitar: Thursdays, 2 p.m. (Recital Hall)
 - Jazz Saxophone: Fridays, Noon (MU 262)
 - Jazz Guitar: Fridays, 1:30 p.m. (Kenton Hall)
 - Jazz Bass: Tuesdays, 1 p.m. (MU 288)
 - Voice: Tuesdays, 4 p.m. (Concert Hall)
 - Jazz Voice: Fridays, 3 p.m. (MU263/Lab East)
 - Theory: Wednesdays, 4 p.m. (MU 301)
 - Composition: Mondays, 11 a.m. (MEIT, MU 1001)

*In addition to departmental recitals, some of the faculty schedule studio classes. Check with your applied instructor about his/her schedule.

UNT Career Center careercenter.unt.edu

LET THE CAREER CENTER HELP:

- Build your resume!
- Find a job using the Eagle Network!
- Prepare for an interview!

Organizations

Selection of Professional Associations

(there are hundreds):

1. National Association for Music Education www.menc.org
2. American Federation of Teachers www.aft.org
3. Texas Music Educators Association www.tmea.org
4. American Federation of Musicians www.afm.org
5. Music Library Association www.musiclibraryassoc.org
6. American Society of Composers, Authors and Publishers www.ascap.com/index.html
7. American Federation of Television and Radio Artists
8. Broadcast Music, Inc.
9. National Association of Band Instrument Manufacturers
10. Music Critics Association of North America
11. Piano Technicians Guild
12. American Association for Music Therapy
13. American Choral Directors Association
14. American Composers Alliance
15. Audio Engineering Society
16. National Music Publishers Association

Music Student Organizations at UNT:

www.music.unt.edu/musiced/studentorg.html

- Phi Mu Alpha Sinfonia
- Sigma Alpha Iota (SAI)
- North Texas Student Music Educators (NTSME)
- Mu Phi Epsilon
- The Association of Professional Black Musicians (APBM)
- American String Teachers Association (ASTA)

4. SECONDARY MUAG 101# OR MUAS15## (1)

Placement in class piano is by audition or testing.

- All music majors, except piano majors and concentrations, must take class piano until the Piano Proficiency Exam is passed. <http://music.unt.edu/piano/pianoproficiency>
- Students whose principal instrument is piano must choose a secondary: organ, harpsichord, orchestral/band instrument, voice.

5. ADDITIONAL MUSIC CORE OR MUSIC MAJOR COURSES (credits vary)

Fill in other music courses from your degree plan such as **MUMH 1600 Music in the Human imagination (3)**

6. SMALL ENSEMBLES - Some, *but not all*, instruments require registration in a small ensemble (1 hr each):

Horn:	MUEN 2602.501
Trombone:	MUEN 2602.502
Tuba/Euphonium:	MUEN 2602.503
Classical Guitar:	MUCM 3621.500
Percussion:	MUAG 1117.502*
	(*restricted, percussion majors/ concentrations only)
	MUCM 3617

7. UNT CORE COURSES (typically 3 credits each)

Fill in non-music courses (MATH 1580 , ENGL 1310, HIST 2610, etc.)
 •Refer to the sample semester-by-semester plan, **Guidebook**, degree plan or Interactive Degree Audit for a full list of university core requirements.

8. TIME CHECK

Double check that none of your courses overlap in time using your trial time schedule or the online Visual Schedule Builder www.vsb.unt.edu

9. LOG INTO [MY.UNT.EDU](http://my.unt.edu) TO REGISTER

- Select “Student Center/Register”
- Remove any Holds
- Select “Enroll/Add/Drop”

10. RUN INTERACTIVE AUDIT (After registering)

Make sure courses are fulfilling degree requirements as they should.

my.unt.edu>Student Center>My Academics>Run Audit>Go>View Audit>Open All Sections

Please visit the College of Music Advising website <http://music.unt.edu/advising> and choose “Undergraduate”

There are many resources available to you from this site including information about:

- **Interactive audit FAQs**
- **Degree Plans & Semester by Semester Plans**
- **University and College of Music Core Curriculum**
- **Ensemble Auditions**
 - Band
 - Orchestra
 - Choir
 - Jazz
 - Jazz Singers
 - Percussion Ensembles
- **College of Music Proficiencies**
 - Piano
 - Computer
 - Theory (TPE)
- **Division Handbooks**
- **Study Abroad & Exchange**
- **Roomview & Room Reservations** (find out if classrooms and performance halls are available for you or your organization to use)
- **Facebook** (like *UNT Music Advising* on facebook for up-to-date advising news)

Practice Rooms & Lockers

ALL MUSIC PRACTICE ROOM AND LOCKER RENTAL INFORMATION WILL BE AVAILABLE ON THE WEB AT: www.music.unt.edu/practice

Available the week before classes begin.

Recital Information

- Visit www.music.unt.edu/roomview to check room availability and schedule your event.
- Choose “REQUEST”

After you’ve scheduled your concert, you will be required to have a program made through the Program Office.