

[Page One](#)
[Campus
Computing
News](#)
[Semester Break
Hours](#)
[Gartner Core
Research
Services Now
Available to the
UNT Community](#)
[SkillSoft Site Re-
organized With
New Course
Offerings](#)
[Today's Cartoon](#)
[RSS Matters](#)
[The Network
Connection](#)
[Link of the
Month](#)
[WWW@UNT.EDU](#)
[Short Courses](#)
[IRC News](#)
[Staff Activities](#)
[Subscribe to
Benchmarks
Online](#)

Research and Statistical Support University of North Texas

RSS Matters

Link to the last RSS article here: [Bayesian Packages for R version 2.2.1](#) - Ed.

Publishing HTML Documents on the Web2survey Zope Server

By [Dr Rich Herrington](#), ACS Research and Statistical Support Services Consultant

This month we take a look at publishing HTML documents on our Zope survey server:

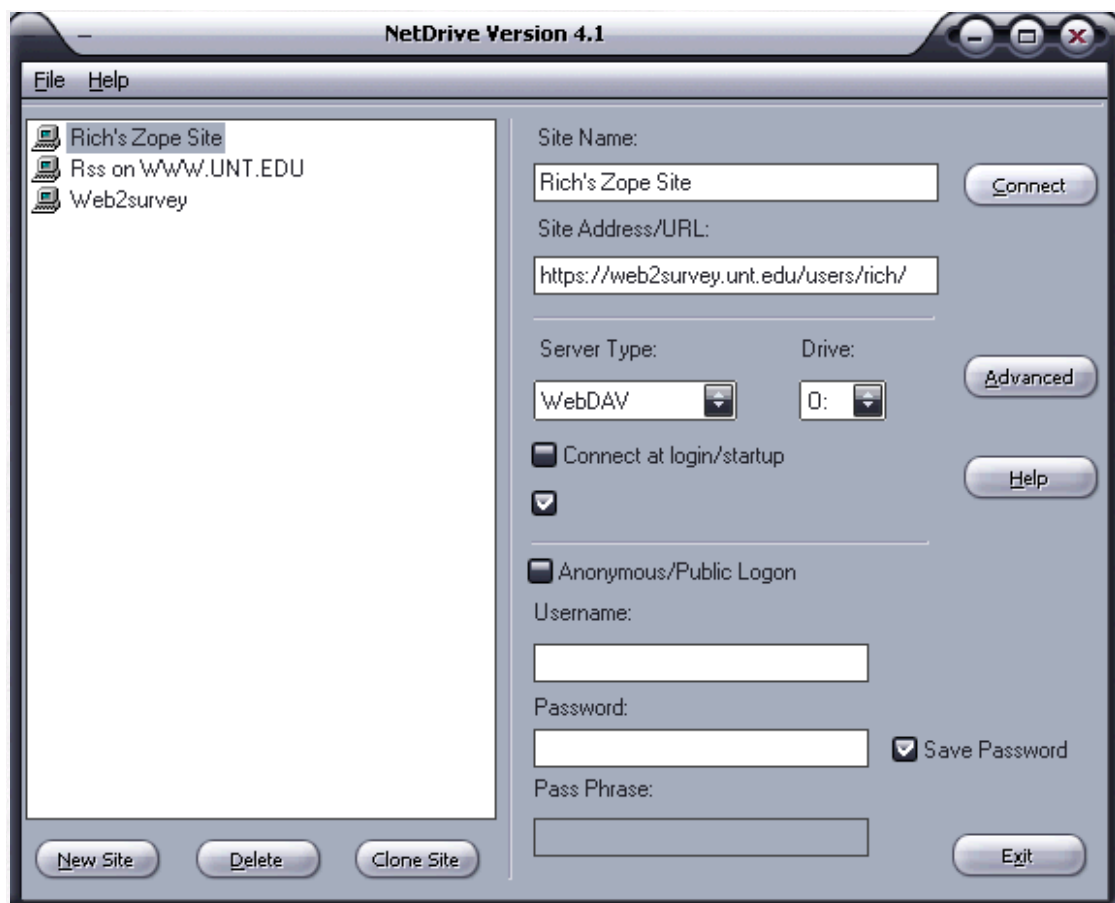
<https://web2survey.unt.edu/>

We will be using the following two software utilities:

Novell's [Netdrive](#) WebDAV client and drive-mapper, and [NVU's open source HTML editor](#). Our demonstration will assume a Microsoft Windows Platform; however, WebDAV utilities exist for MacOS platform (e.g. [Goliath](#)).

Mapping a drive to the Zope File System

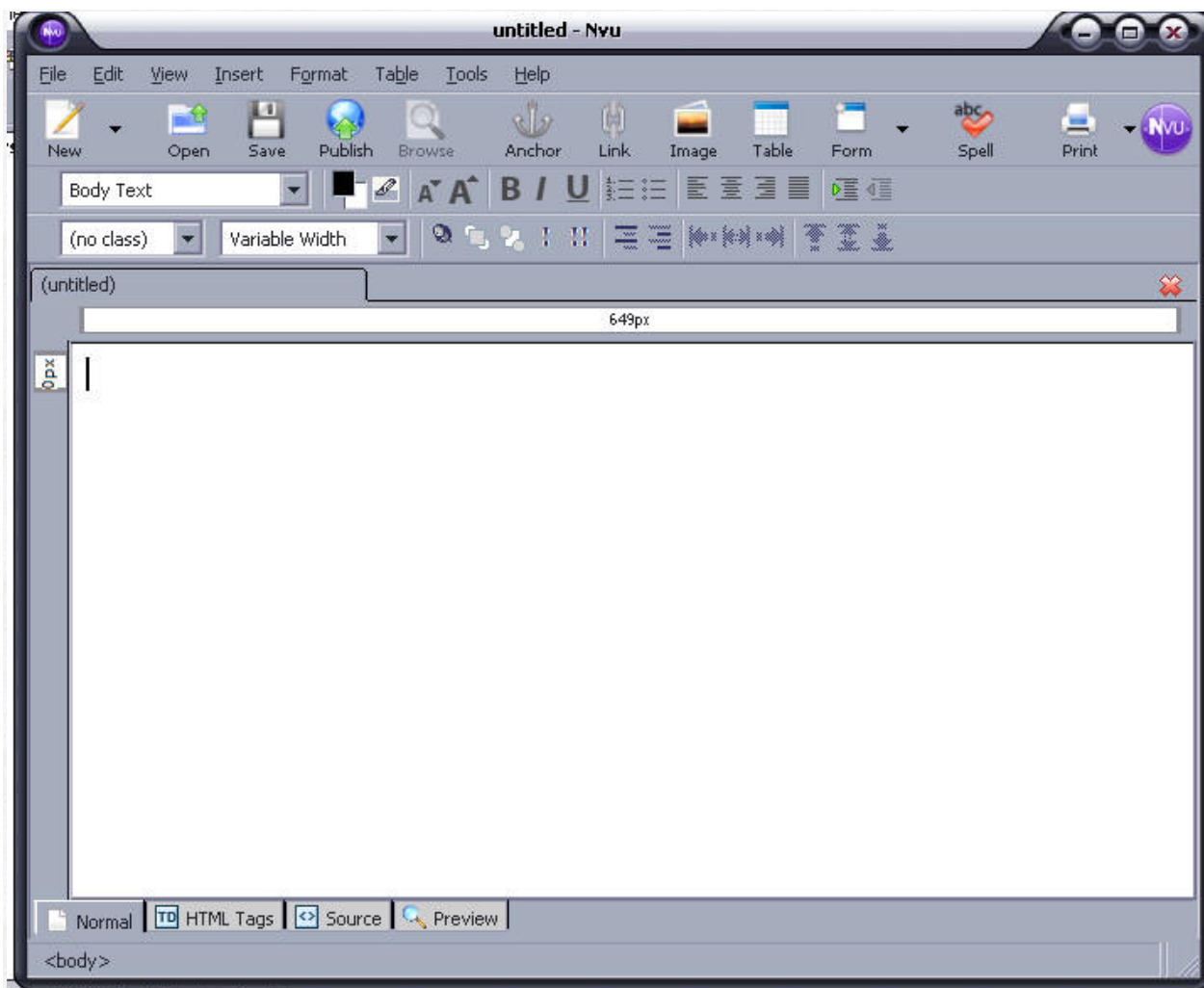
After installing Netdrive and running the program you will want to configure the connection settings. First we want check and see what drive assignment is available for our Zope address. Click on "My Computer" and look for an available letter for drive assignment (e.g. O:\). Open Netdrive and you will see the following configuration screen:



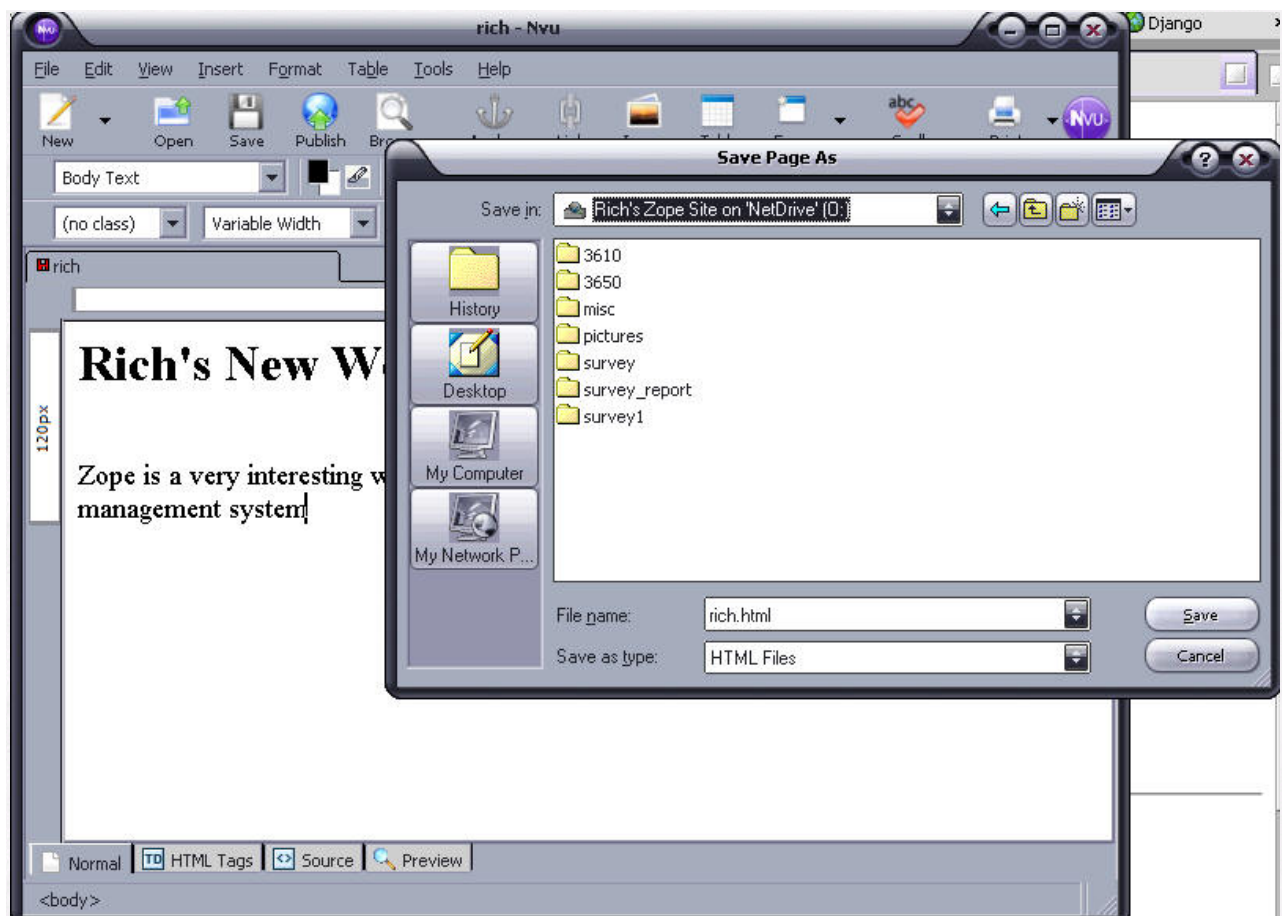
You will want to provide the URL to your account: e.g. <https://web2survey.unt.edu/users/rich/>. Provide the drive letter that the Zope file system will map to - e.g. O: . Next, make sure that Anonymous/Public Logon is NOT enabled; provide your Username and Password that were provided with your Zope account. Finally, click the connect button in the upper right portion of the panel. A Explorer type window will spawn. Copy - Paste and Drag - Drop functionality is available for this drive assignment - O:\ . Basically, any software that can write to the file system should see the O: drive as an available drive. Consult [Novell's website documentation](#) on Netdrive for further details on using this drive mapping utility.

Creating HTML Documents on Zope Using NVU

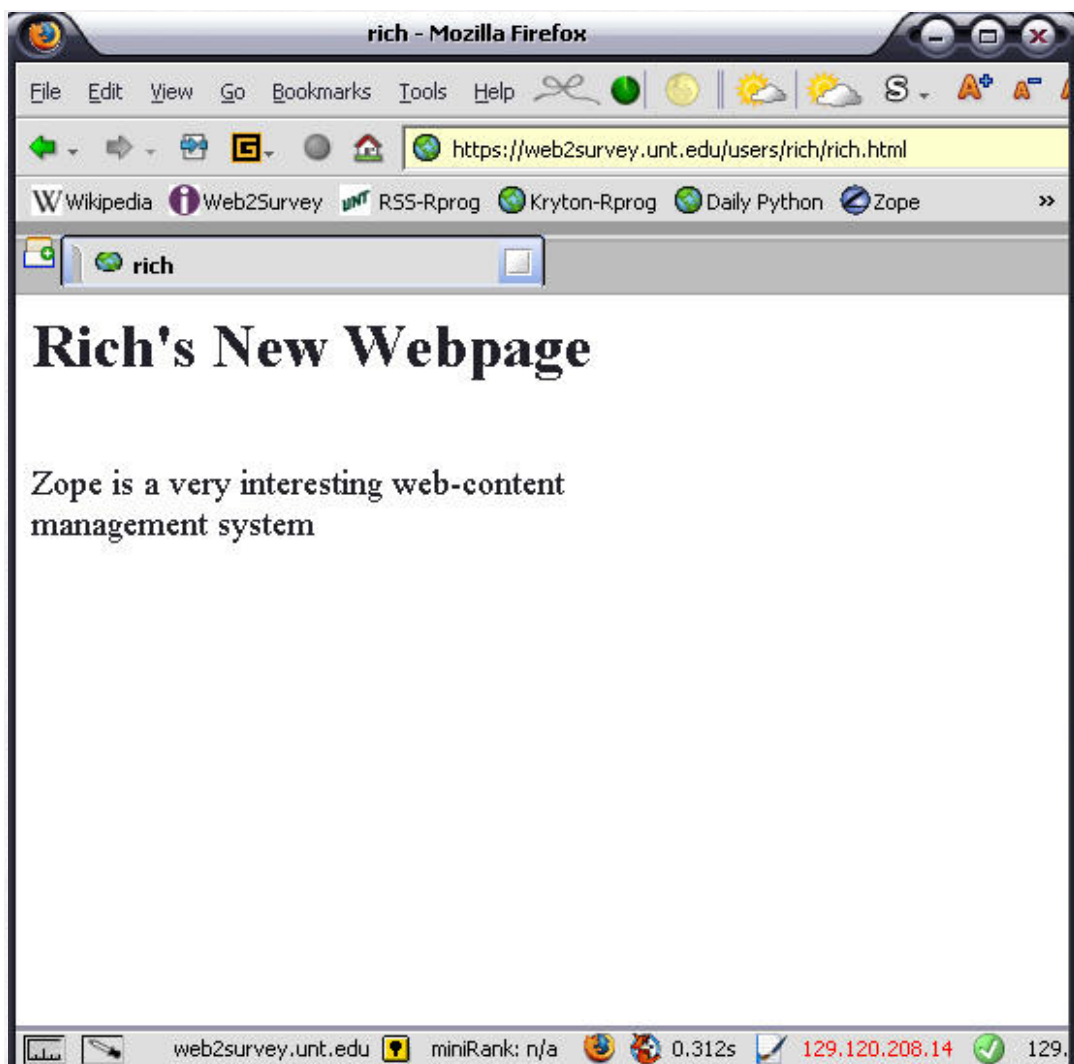
The NVU HTML Editor provides very similar functionality to Microsoft FrontPage or Dreamweaver. While not as feature rich as these popular proprietary HTML editor's, NVU has an impressive array of functionality for a free program:



To save content to the mapped drive (e.g. O:\) choose "File - Save As". You may be prompted for a title for the webpage:



This content saves to the O:\ drive, but since the O: drive is mapped to <https://web2survey.unt.edu/users/rich/> the content is automatically available for web browsing. In Firefox we browse the URL and view the webpage:



I hope this very simple demonstration of authoring content on our Web2survey Zope server solves the tricky issue of working with HTML on Zope. Until next time....Happy computing!

***** ANNOUNCING a new Blogging site for folks interested in sharing ideas about research methodology and statistics - [RSS-blogs](#) ******

Please note that information published in *Benchmarks Online* is likely to degrade over time, especially links to various Websites. To make sure you have the most current information on a specific topic, it may be best to search the UNT Website - <http://www.unt.edu>. You can also search *Benchmarks Online* - <http://www.unt.edu/benchmarks/archives/back.htm> as well as consult the UNT Helpdesk - <http://www.unt.edu/helpdesk/>. Questions and comments should be directed to benchmarks@unt.edu

[Return to top](#)