

Emergency Evacuation Procedures

Murchison Performing Arts Center

Severe Weather

In the event of severe weather, all building occupants should immediately seek shelter in the designated shelter-in-place area in the building. If unable to safely move to the designated shelter-in-place area, seek shelter in a windowless interior room or hallway on the lowest floor of the building.

All building occupants should take shelter in the in the lower level of the center to rooms 009, 010, 011 and 020

Bomb Threat/Fire

In the event of a bomb threat or fire in the building, all building occupants should immediately evacuate the building using the nearest exit. Once outside, proceed to the designated assembly area. If unable to safely move to the designated assembly area, contact on or more members of your department or unit to let them know you are safe and inform them of your whereabouts.

All building occupants should immediately evacuate the building and proceed to parking lot 20, northwest of the building.








PERFORMING ARTS CENTER

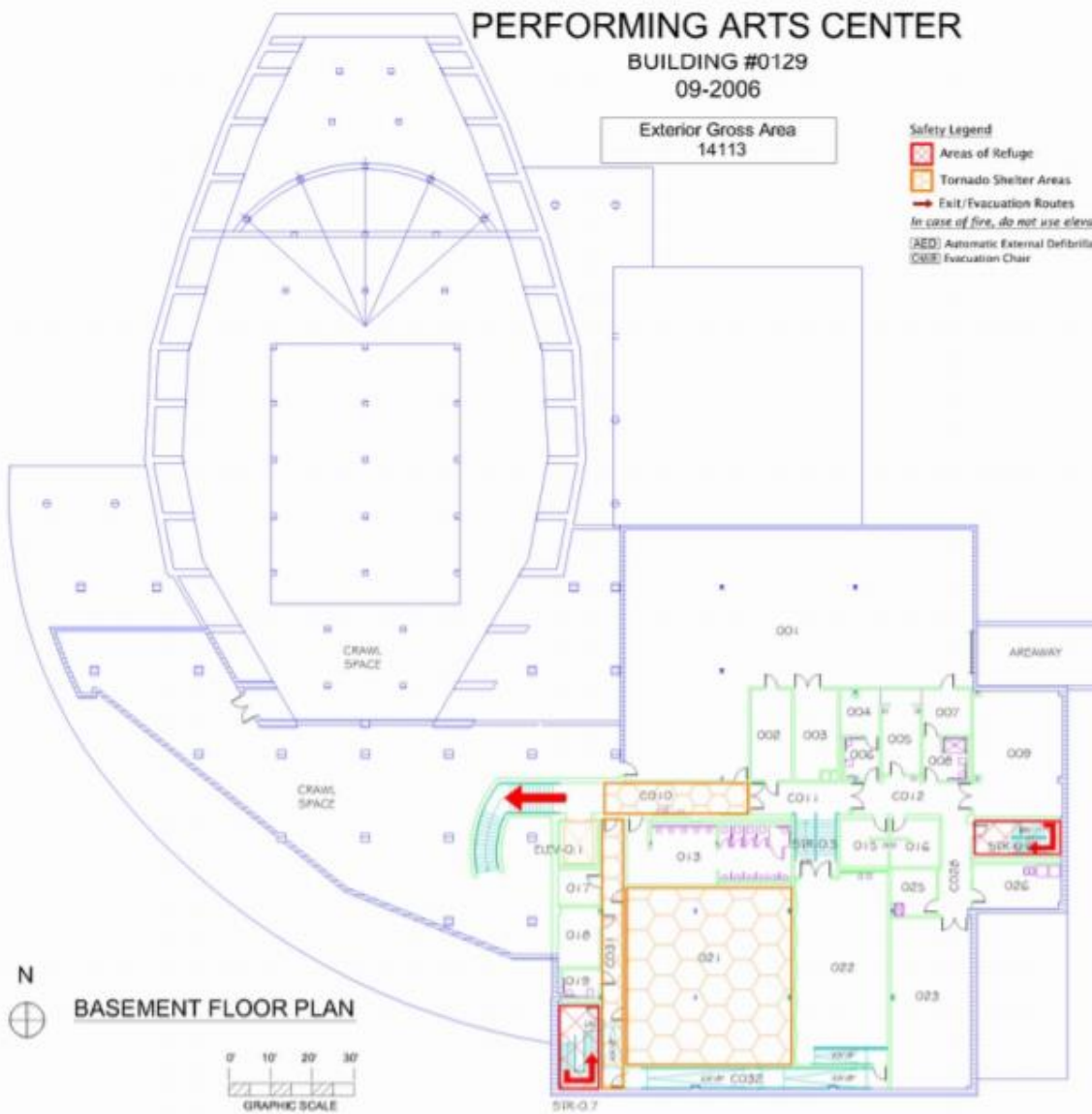
BUILDING #0129

09-2006

Exterior Gross Area
14113

Safety Legend

-  Areas of Refuge
-  Tornado Shelter Areas
-  Exit/Evacuation Routes
- In case of fire, do not use elevator*
-  (AED) Automatic External Defibrillator
-  (EWC) Evacuation Chair



PERFORMING ARTS CENTER

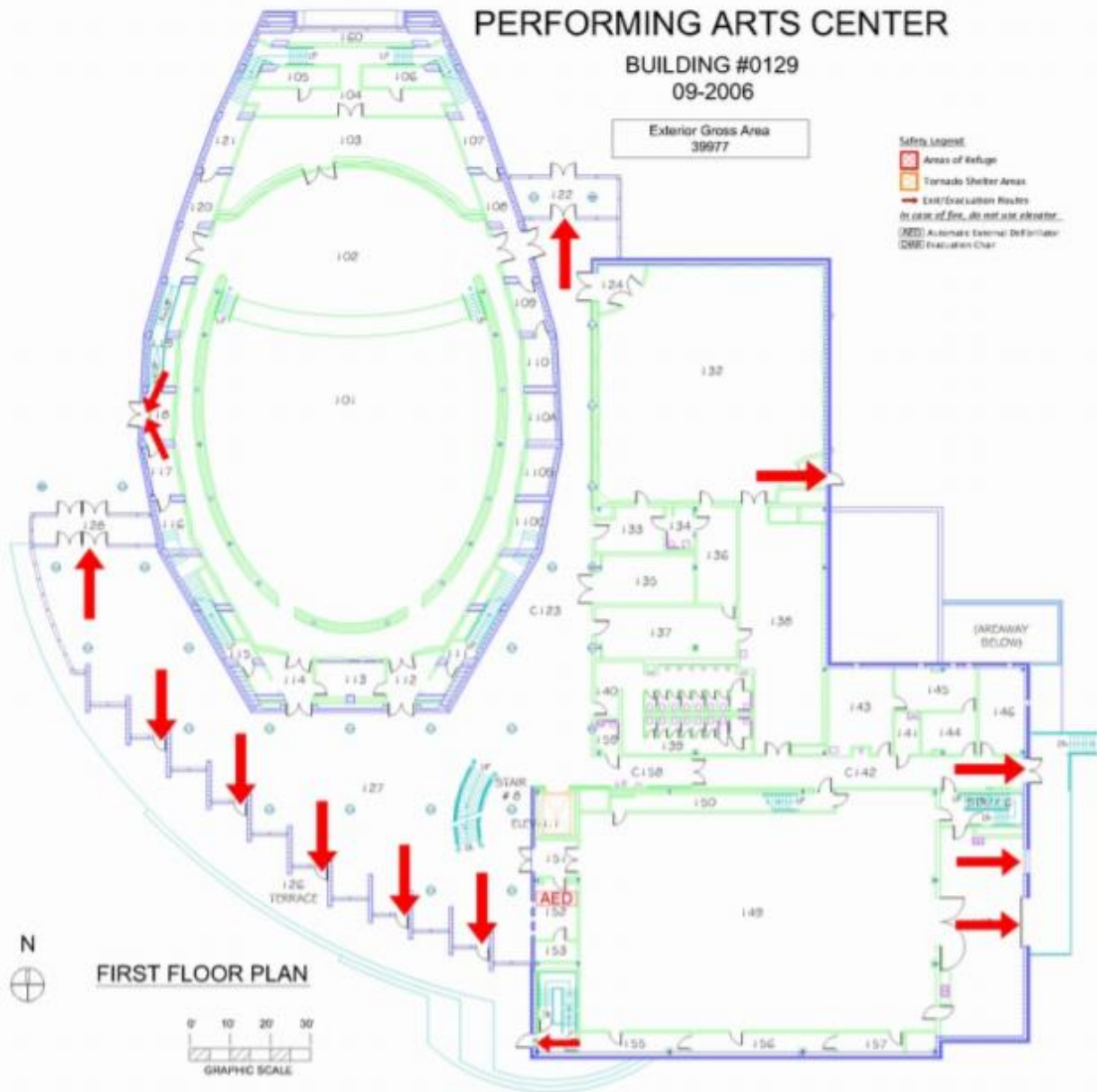
BUILDING #0129

09-2006

Exterior Gross Area
39977

Safety Legend

- Areas of Refuge
- Tornado Shelter Areas
- Exit/Evacuation Routes
In case of fire, do not use elevator.
- (AED) Automatic External Defibrillator
- (DWC) Evaluation Chair



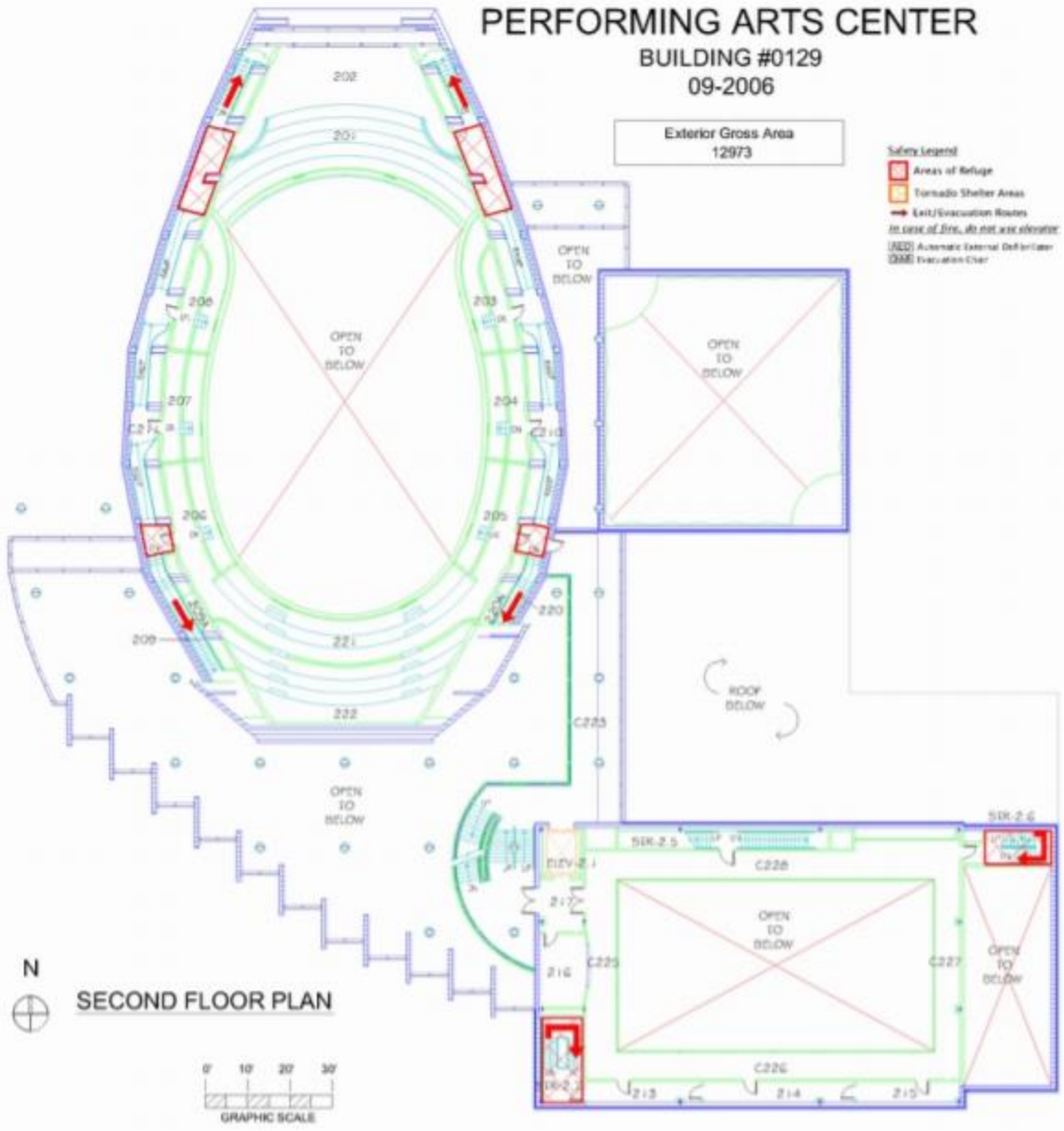
FIRST FLOOR PLAN



PERFORMING ARTS CENTER BUILDING #0129 09-2006

Exterior Gross Area
12973

- Safety Legend**
- Areas of Refuge
 - Tornado Shelter Areas
 - Exit/Evacuation Routes
 - In case of fire, do not use elevator*
 - Automatic External Defibrillator
 - Evacuation Chair



SECOND FLOOR PLAN

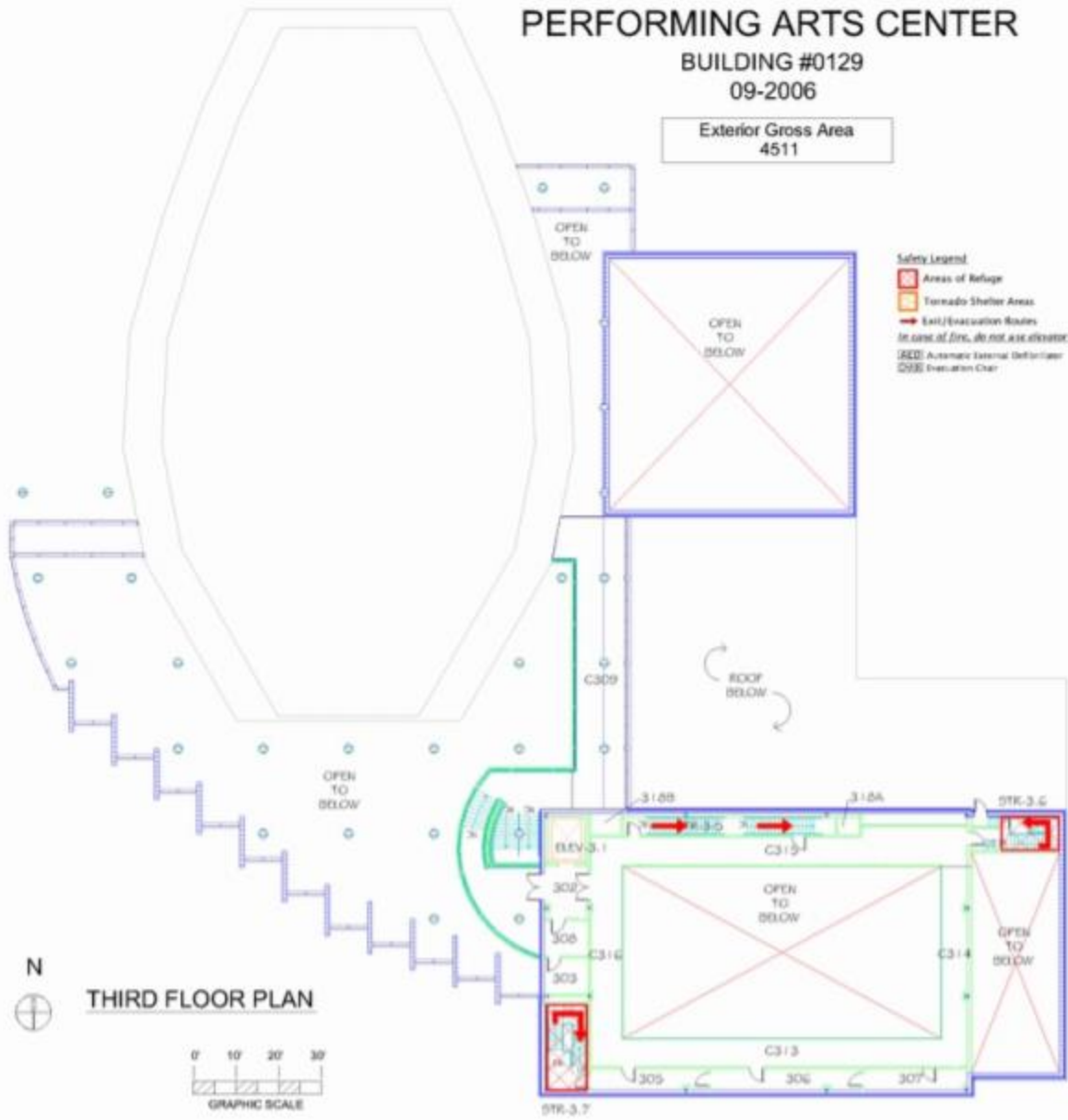


PERFORMING ARTS CENTER

BUILDING #0129

09-2006

Exterior Gross Area
4511



THIRD FLOOR PLAN



- Safety Legend**
- Area of Refuge
 - Tornado Shelter Area
 - Exit/Evacuation Route
 - In case of fire, do not use elevator
 - (RED) Automatic Internal Defibrillator
 - (DSE) Evacuation Chair

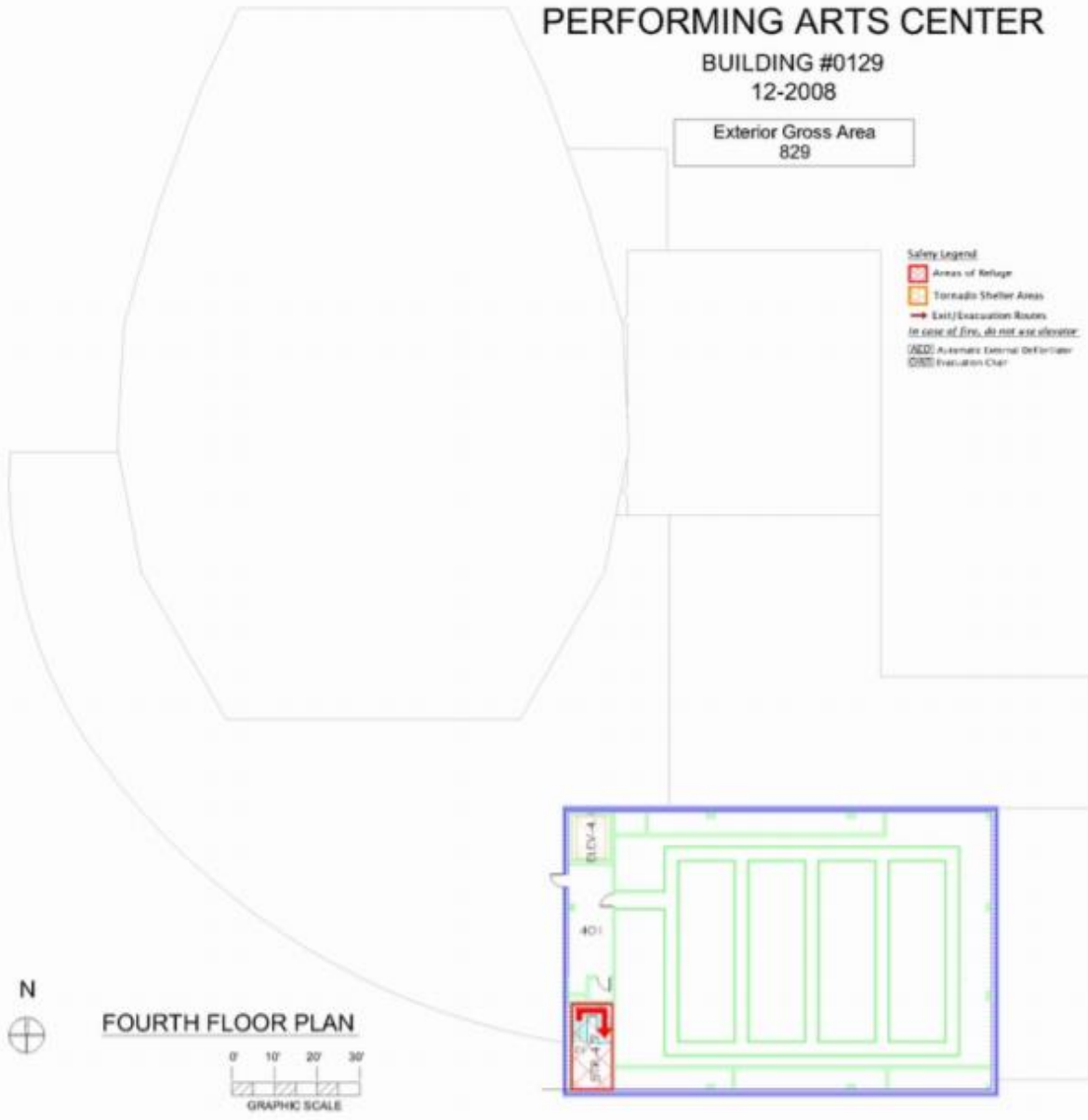
PERFORMING ARTS CENTER

BUILDING #0129

12-2008

Exterior Gross Area
829

- Safety Legend**
- Areas of Refuge
 - Tornado Shelter Areas
 - Exit/Evacuation Routes
- In case of fire, do not use elevator.*
- Automatic External Defibrillator
 - Evaluation Chair



FOURTH FLOOR PLAN

