

Emergency Evacuation Procedures

Kerr Hall

Severe Weather

In the event of severe weather, all building occupants should immediately seek shelter in the designated shelter-in-place area in the building. If unable to safely move to the designated shelter-in-place area, seek shelter in a windowless interior room or hallway on the lowest floor of the building.

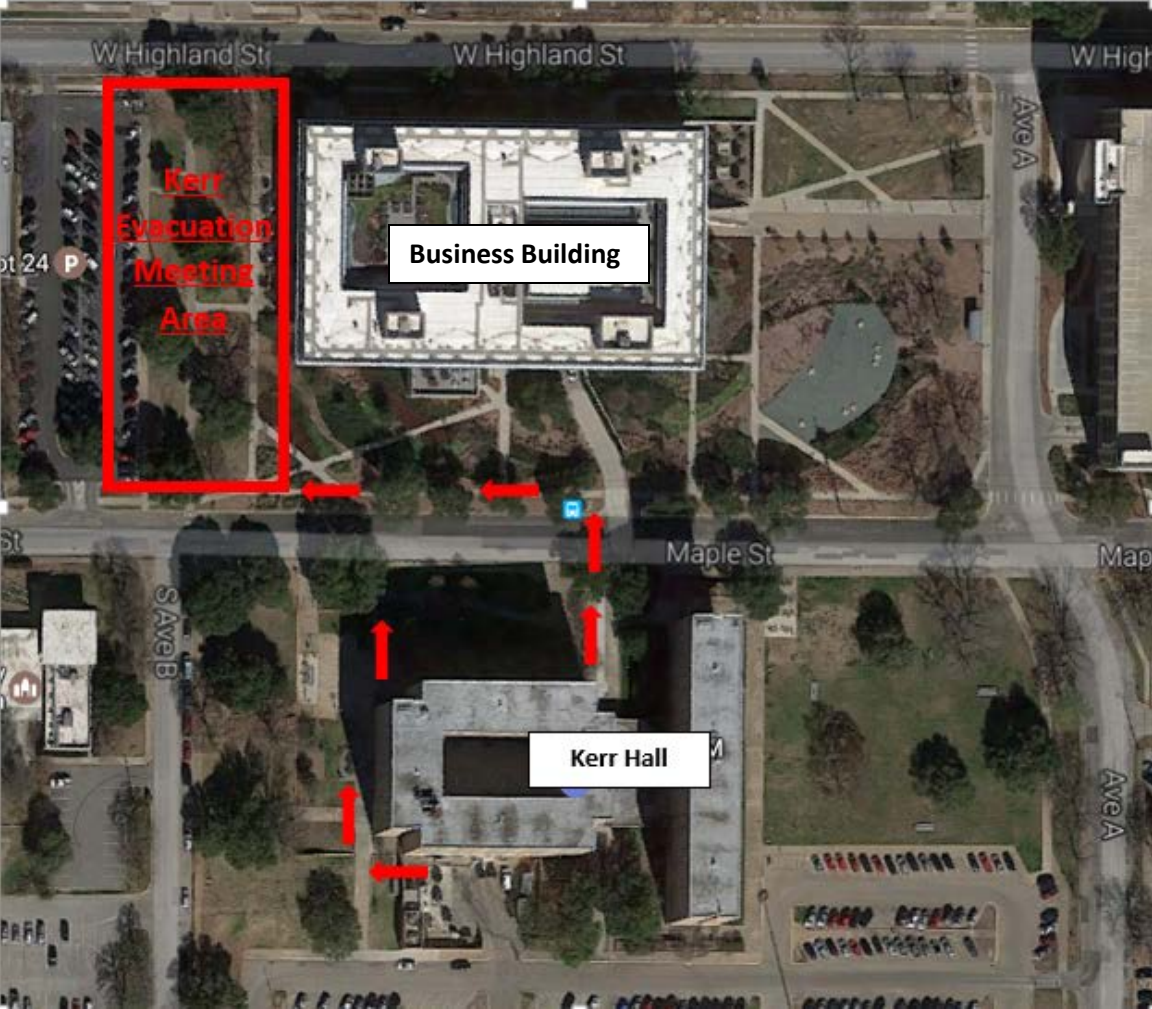
Residents should take shelter in the hallways and bathrooms of floors 1-3 in their respective tower, A or B

Bomb Threat/Fire

In the event of a bomb threat or fire in the building, all building occupants should immediately evacuate the building using the nearest exit. Once outside, proceed to the designated assembly area. If unable to safely move to the designated assembly area, contact one or more members of your department or unit to let them know you are safe and inform them of your whereabouts.

All building occupants should immediately evacuate the building and proceed to the grassy area on the West side of the Business Leadership Building. (See following map for location)

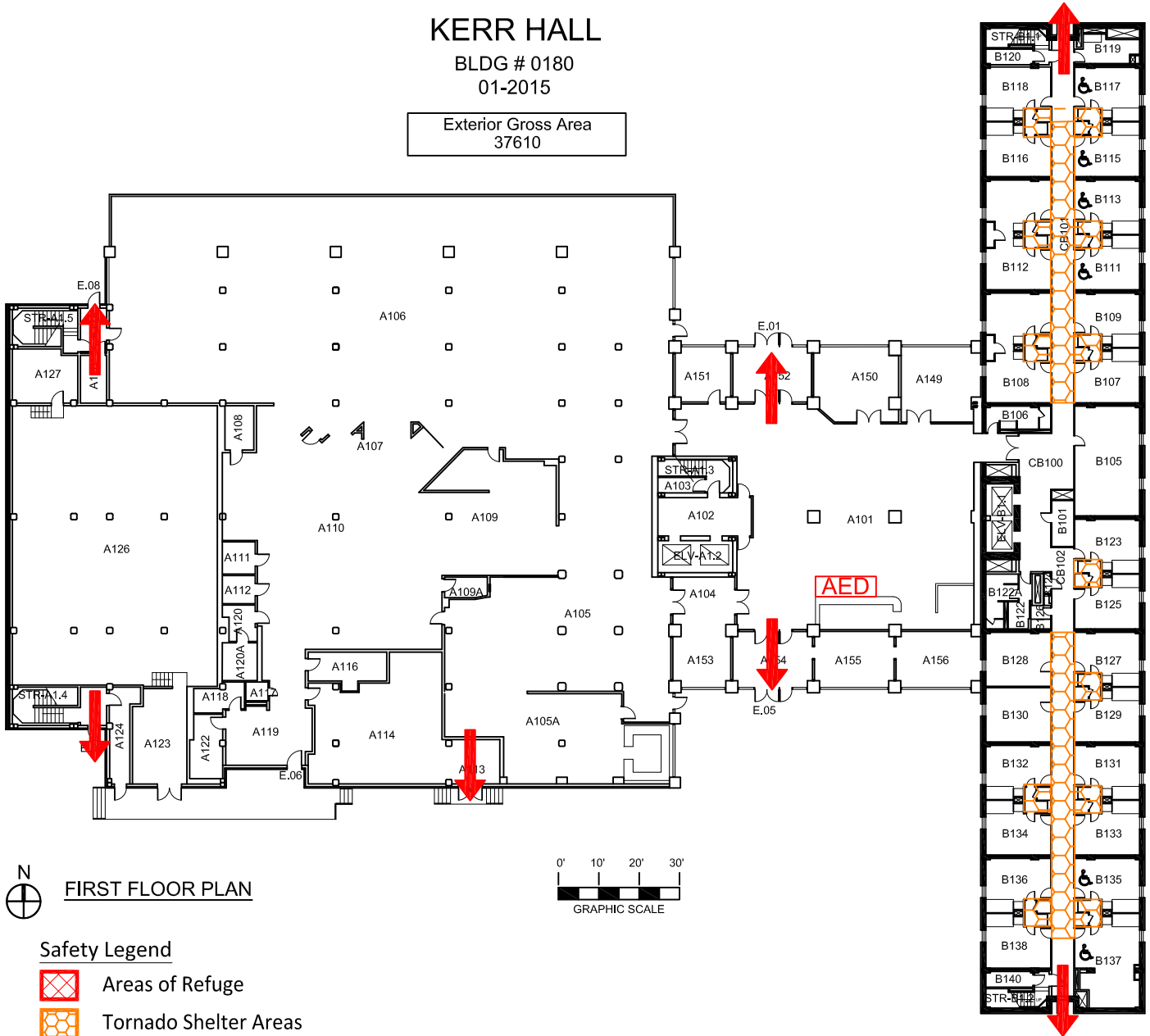
Kerr Hall Emergency Evacuation Meeting Location



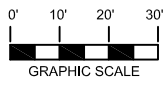
KERR HALL

BLDG # 0180
01-2015




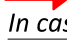
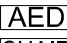
Exterior Gross Area
37610



N
FIRST FLOOR PLAN



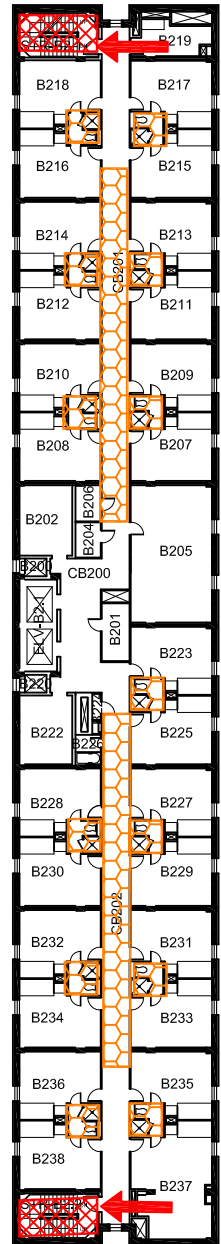
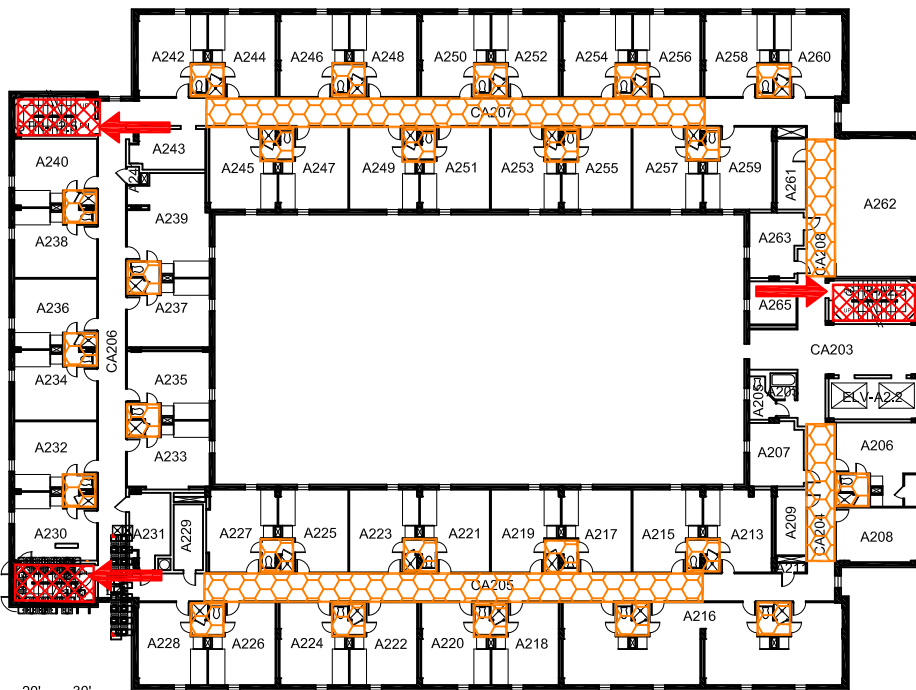
Safety Legend

-  Areas of Refuge
-  Tornado Shelter Areas
-  Exit/Evacuation Routes
In case of fire, do not use elevator
-  AED Automatic External Defibrillator
-  CHAIR Evacuation Chair

KERR HALL






BLDG # 0180
07-2015

Exterior Gross Area
27122



N
⊕ SECOND FLOOR PLAN

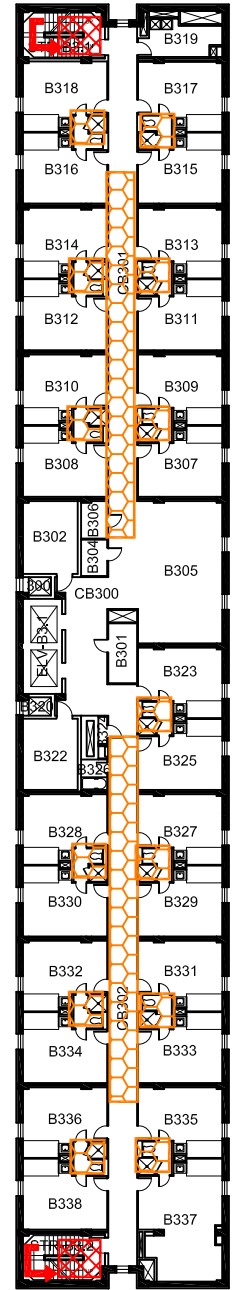
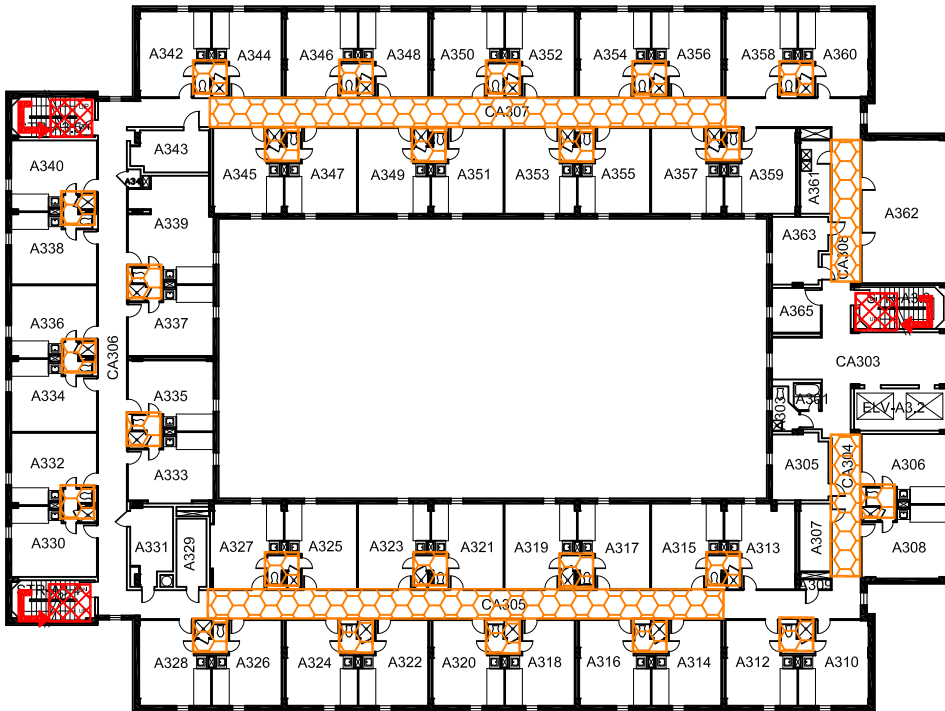
Safety Legend

-  Areas of Refuge
-  Tornado Shelter Areas
-  Exit/Evacuation Routes
- In case of fire, do not use elevator*
-  AED Automatic External Defibrillator
-  CHAIR Evacuation Chair

KERR HALL

BLDG # 0180
01-2015


Exterior Gross Area
27122





THIRD FLOOR PLAN




Safety Legend

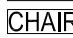
 Areas of Refuge

 Tornado Shelter Areas

 Exit/Evacuation Routes

In case of fire, do not use elevator

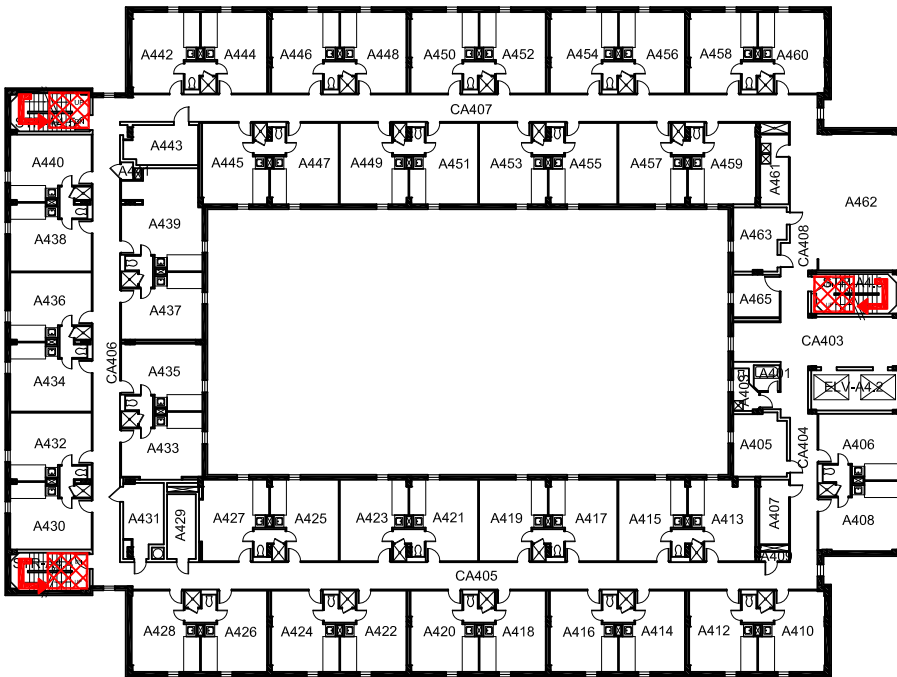
 AED Automatic External Defibrillator

 CHAIR Evacuation Chair

KERR HALL

BLDG # 0180
01-2015






Exterior Gross Area
27122

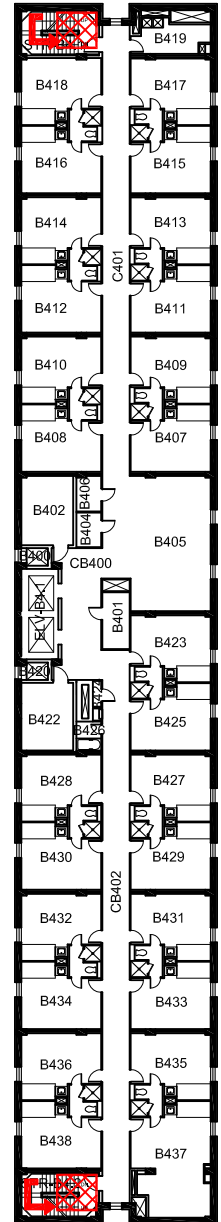


N
FOURTH FLOOR PLAN



Safety Legend

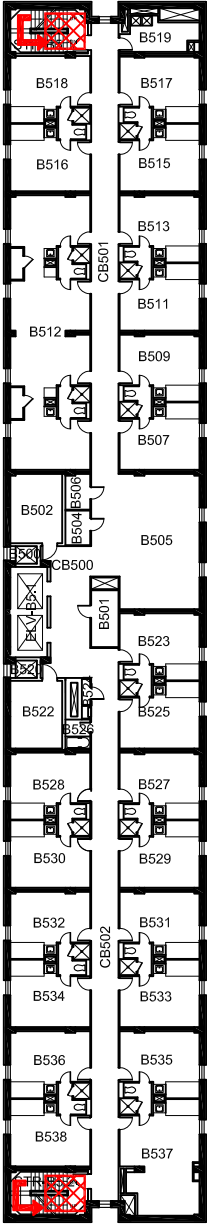
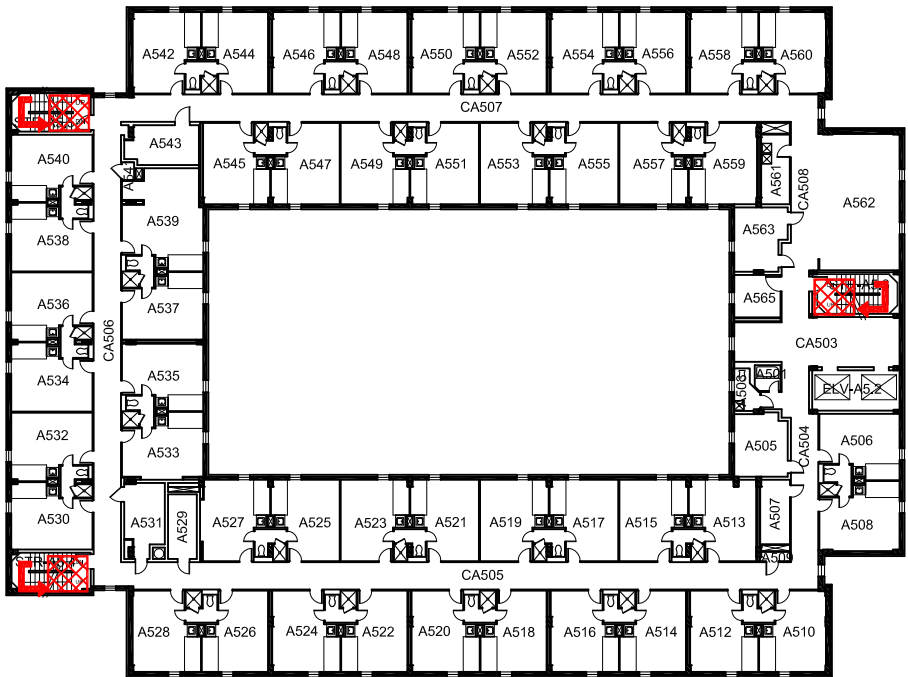
-  Areas of Refuge
-  Tornado Shelter Areas
-  Exit/Evacuation Routes
- In case of fire, do not use elevator*
-  AED Automatic External Defibrillator
-  CHAIR Evacuation Chair



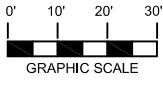
KERR HALL

BLDG # 0180
01-2015






Exterior Gross Area
27122



N
FIFTH FLOOR PLAN



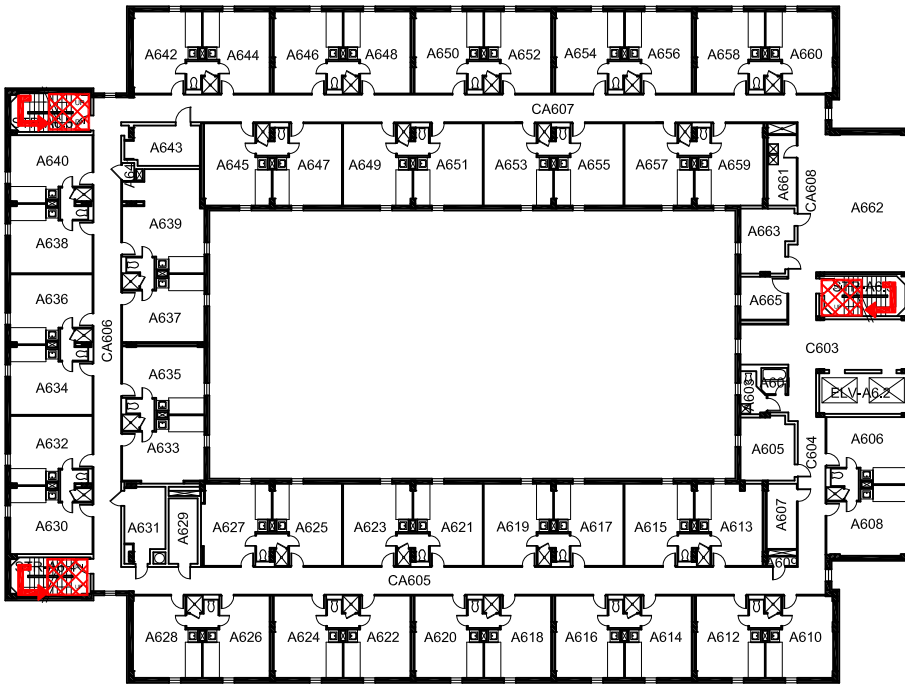
Safety Legend

-  Areas of Refuge
-  Tornado Shelter Areas
-  Exit/Evacuation Routes
- In case of fire, do not use elevator*
-  AED Automatic External Defibrillator
-  CHAIR Evacuation Chair

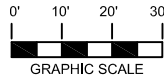
KERR HALL

BLDG # 0180
01-2015

Exterior Gross Area
27122



N
SIXTH FLOOR PLAN



Safety Legend

Areas of Refuge

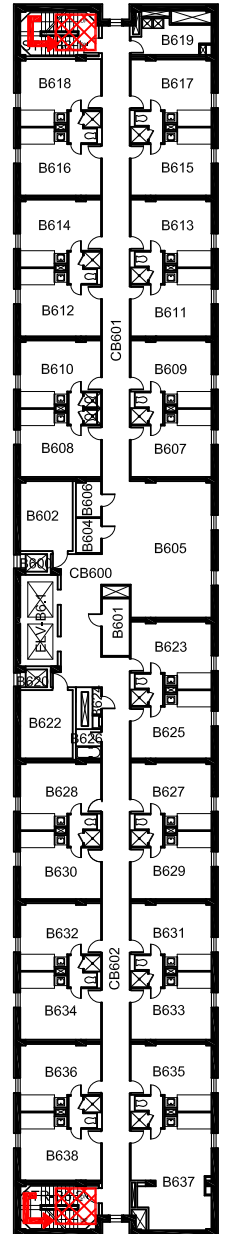
Tornado Shelter Areas

Exit/Evacuation Routes

In case of fire, do not use elevator

Automatic External Defibrillator

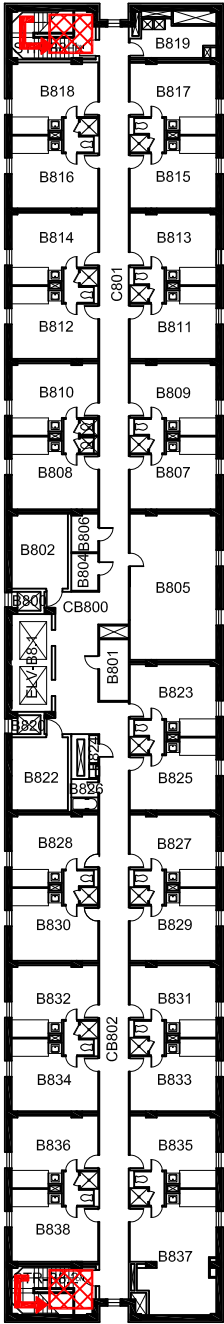
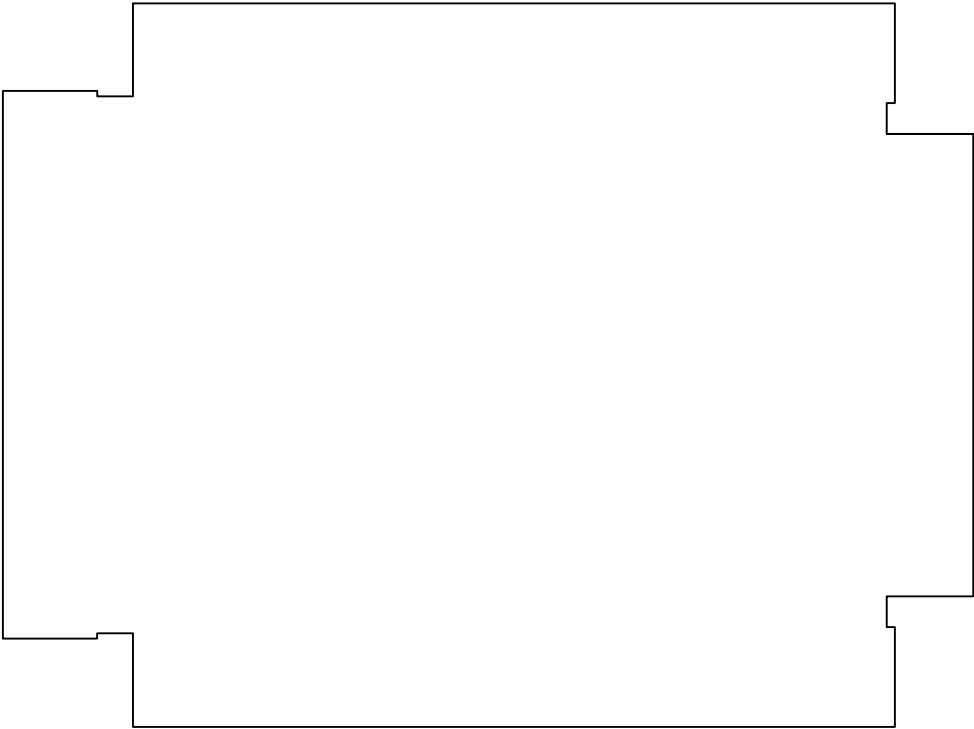
Evacuation Chair



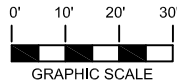
KERR HALL

BLDG # 0180
01-2015


Exterior Gross Area
9937





EIGHTH FLOOR PLAN




Safety Legend


 Areas of Refuge

 Tornado Shelter Areas

 Exit/Evacuation Routes

In case of fire, do not use elevator

 Automatic External Defibrillator

 Evacuation Chair