

Emergency Evacuation Procedures

Victory Hall

Severe Weather

In the event of severe weather, all building occupants should immediately seek shelter in the designated shelter-in-place area in the building. If unable to safely move to the designated shelter-in-place area, seek shelter in a windowless interior room or hallway on the lowest floor of the building.

In the North Wing, all residents living on the first floor should take shelter inside their bathrooms, and all residents living on the 2nd and third floors should take shelter in the first floor hallways.

In the South Wing, all residents living on the 1st and 2nd floors should take shelter in side their bathrooms, and all residents living on the 3rd and 4th floors should take shelter in the 1st floor hallways.

Bomb Threat/Fire

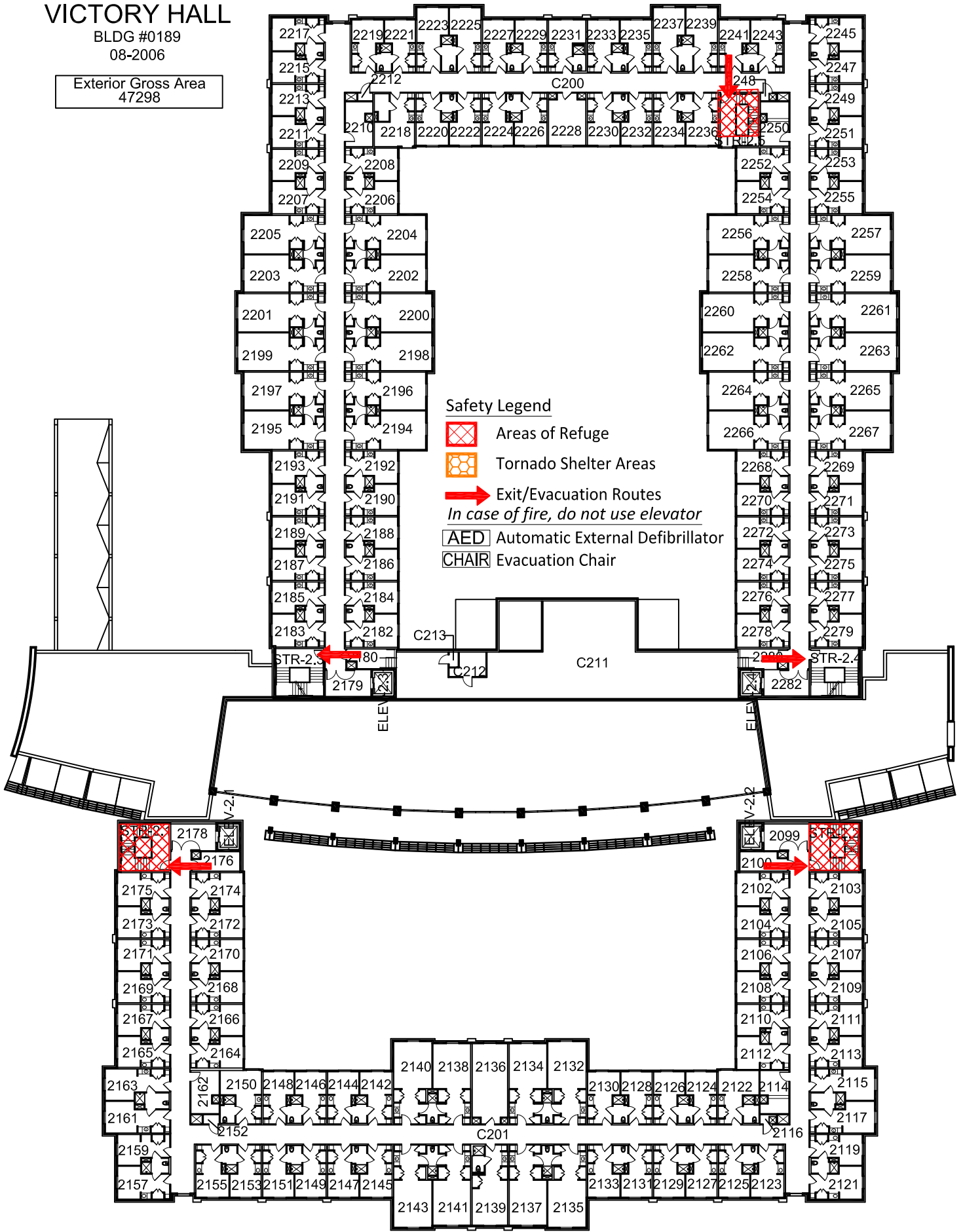
In the event of a bomb threat or fire in the building, all building occupants should immediately evacuate the building using the nearest exit. Once outside, proceed to the designated assembly area. If unable to safely move to the designated assembly area, contact on or more members of your department or unit to let them know you are safe and inform them of your whereabouts.



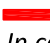
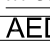

All building occupants should immediately evacuate the building and proceed to parking lot 80 southeast of the building.

VICTORY HALL

BLDG #0189
08-2006

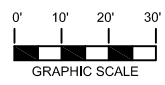
Exterior Gross Area
47298



- Safety Legend**
-  Areas of Refuge
 -  Tornado Shelter Areas
 -  Exit/Evacuation Routes
In case of fire, do not use elevator
 -  AED Automatic External Defibrillator
 -  CHAIR Evacuation Chair



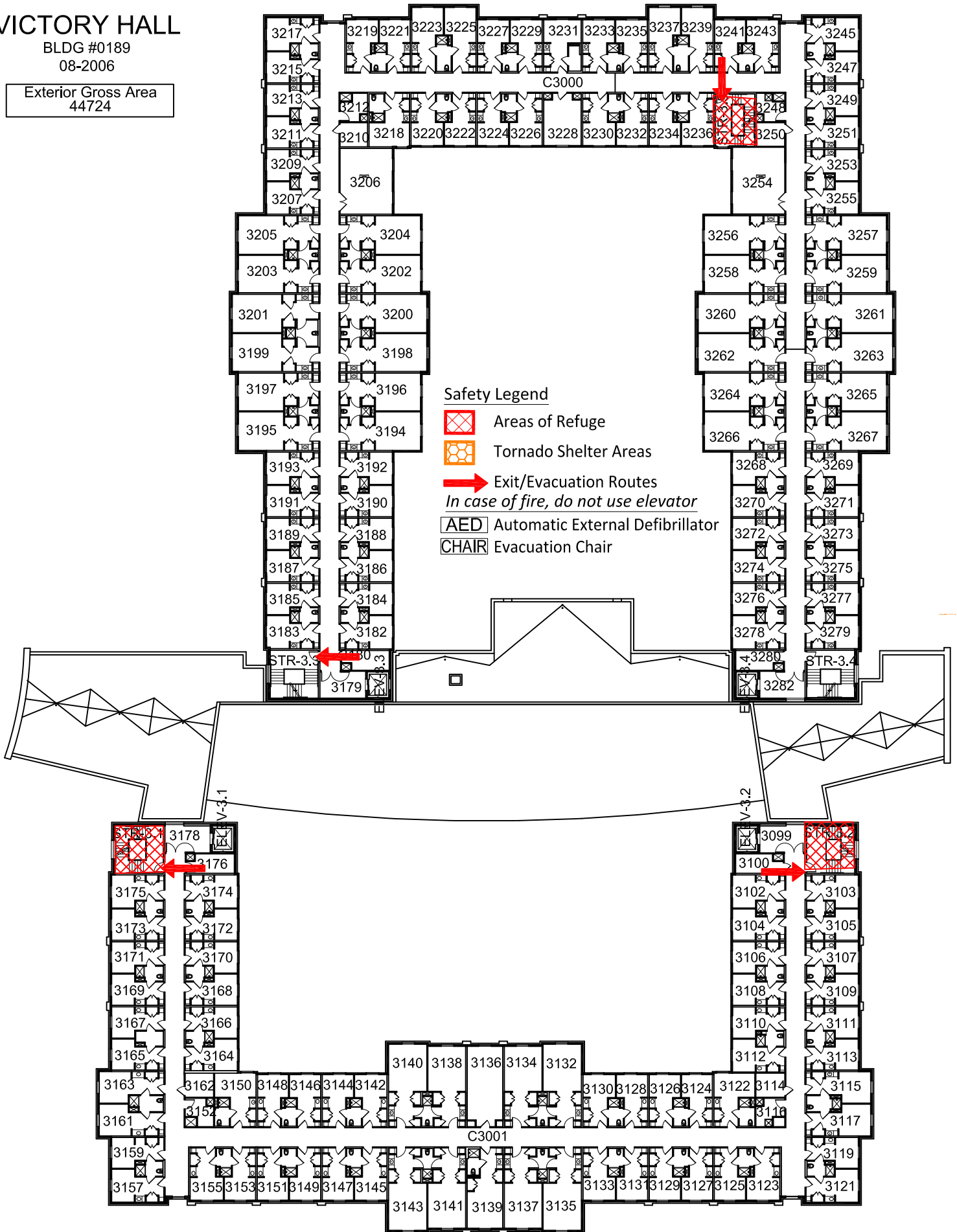
SECOND FLOOR PLAN



VICTORY HALL

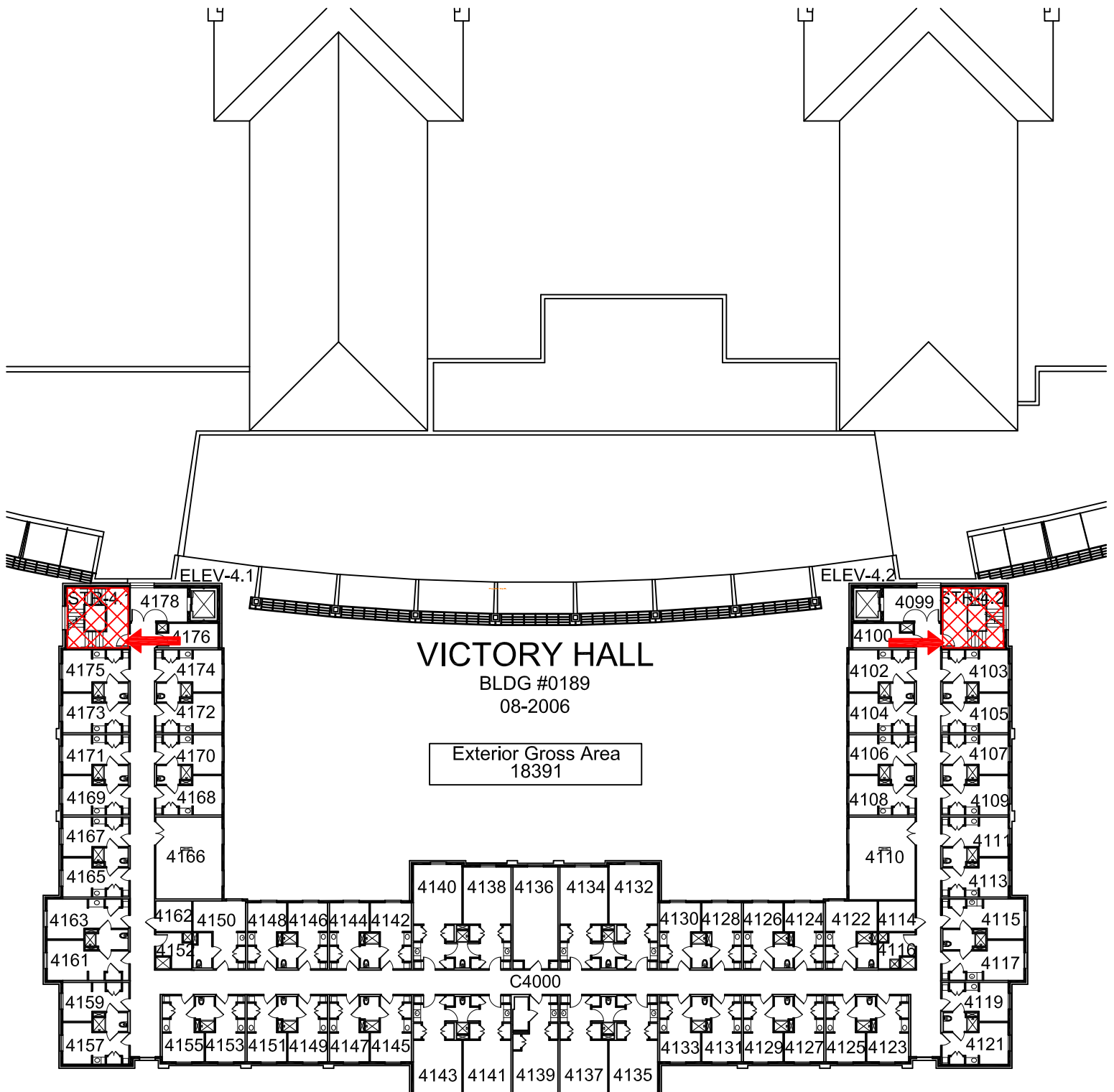
BLDG #0189
08-2006

Exterior Gross Area
44724








THIRD FLOOR PLAN





FOURTH FLOOR PLAN

Safety Legend

-  Areas of Refuge
-  Tornado Shelter Areas
-  Exit/Evacuation Routes
- In case of fire, do not use elevator*
-  AED Automatic External Defibrillator
-  CHAIR Evacuation Chair