

Emergency Evacuation Procedures

Terrill Hall

Page Navigation

- [Severe Weather](#)
 - [Bomb Threat/Fire](#)
 - [Building Evacuation Maps](#)
-

Severe Weather

In the event of severe weather, all building occupants should immediately seek shelter in the designated shelter-in-place area in the building. If unable to safely move to the designated shelter-in-place area, seek shelter in a windowless interior room or hallway on the lowest floor of the building.

1st floor: Building occupants in the Clinic should proceed to the main hallway. All others should proceed to the Men's and Women's restrooms.

2nd floor: All occupants should proceed to the main hallway.

3rd floor: All occupants should proceed to the main hallway on the 2nd floor.

Bomb Threat/Fire

In the event of a bomb threat or fire in the building, all building occupants should immediately evacuate the building using the nearest exit. Once outside, proceed to the designated assembly area. If unable to safely move to the designated assembly area, contact one or more members of your department or unit to let them know you are safe and inform them of your whereabouts.

Persons with mobility impairments who are unable to safely exit the building should move to a designated area of refuge and await assistance from emergency responders.

All building occupants will proceed to parking lot 9 west of Terrill Hall.

Building Evacuation Maps

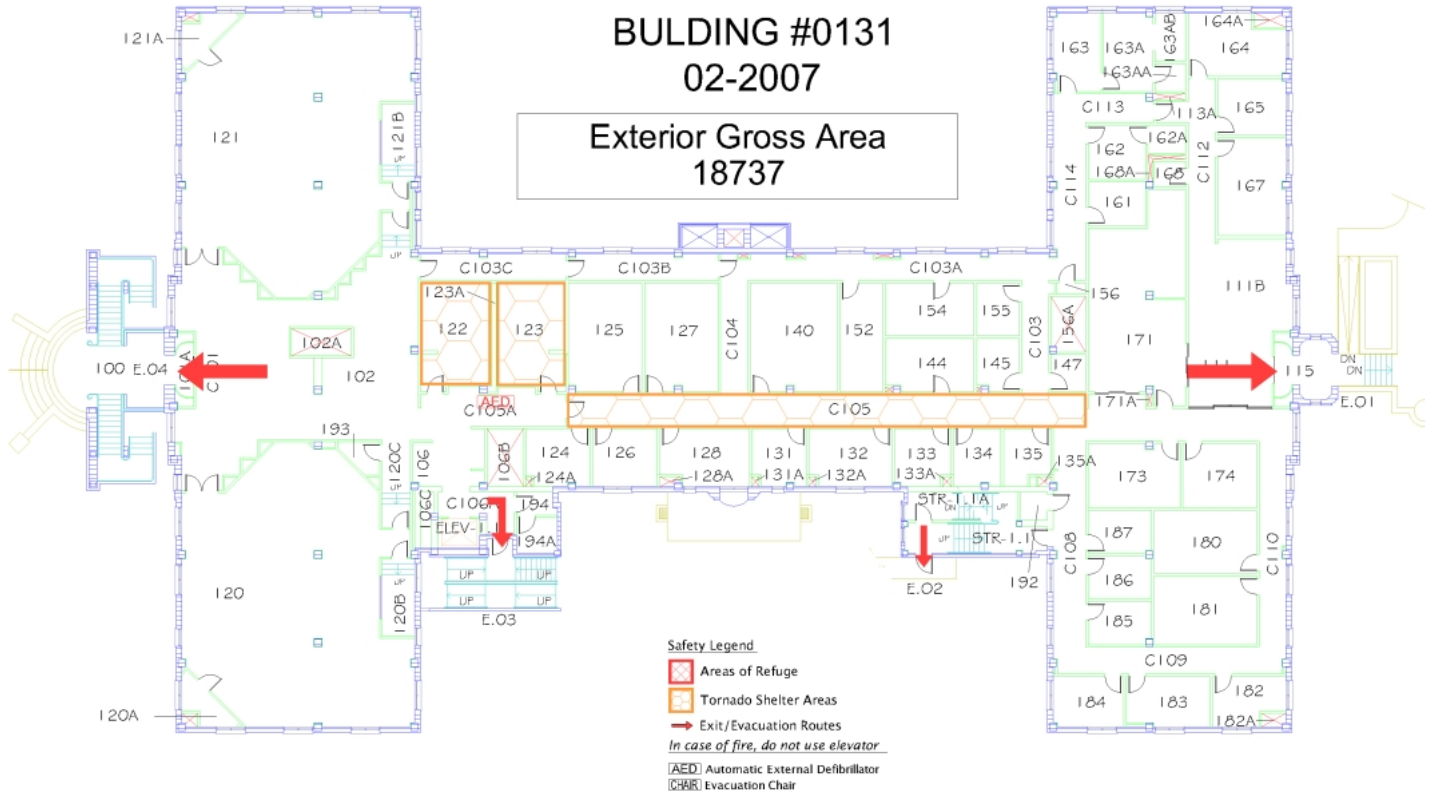
[Print Full Size Map](#)

TERRILL HALL

BUILDING #0131

02-2007

Exterior Gross Area 18737



FIRST FLOOR PLAN

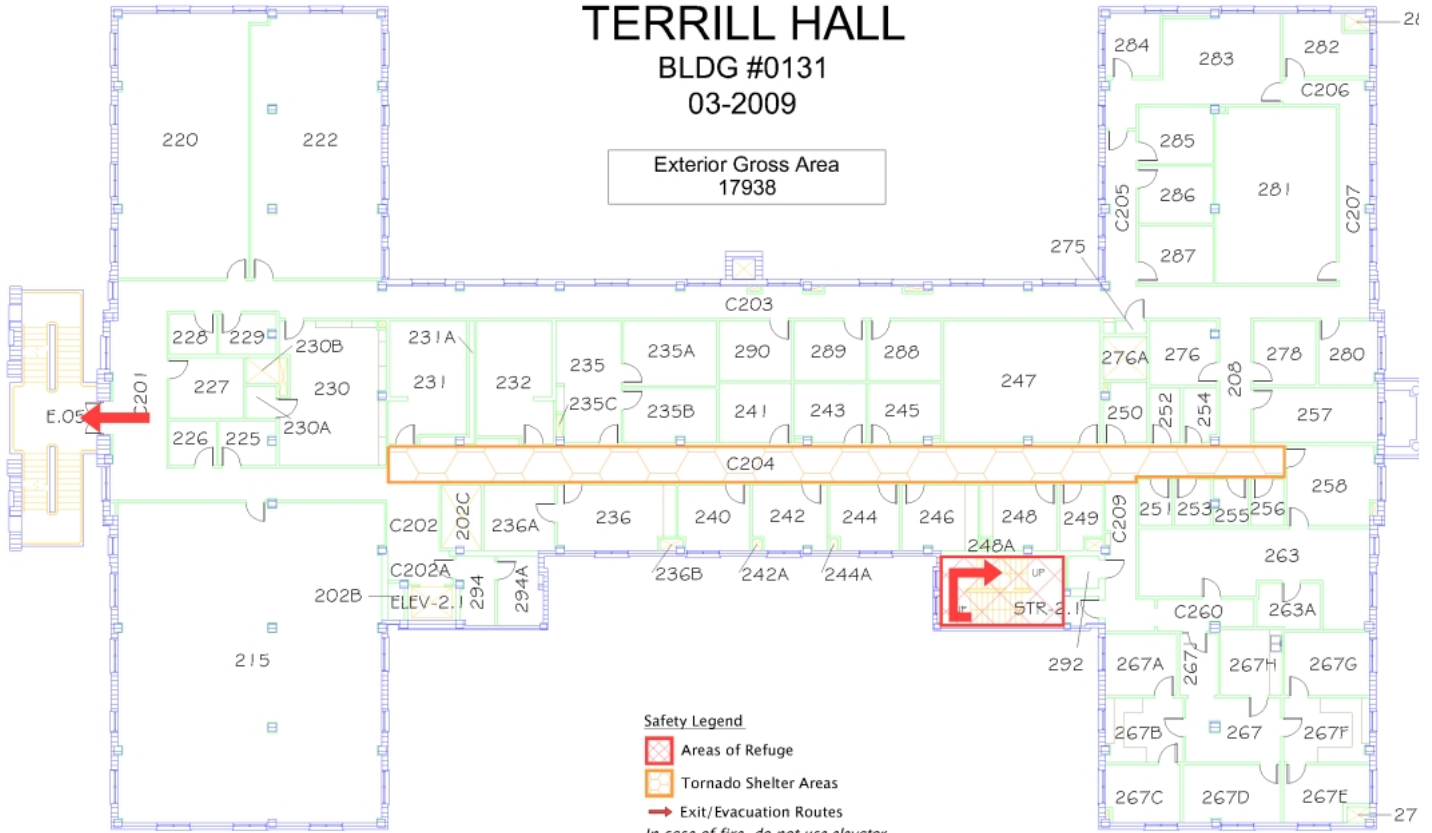







[Print Full Size Map](#)

TERRILL HALL

BLDG #0131
03-2009

Exterior Gross Area
17938



- Safety Legend**
-  Areas of Refuge
 -  Tornado Shelter Areas
 -  Exit/Evacuation Routes
- In case of fire, do not use elevator*
-  Automatic External Defibrillator
 -  Evacuation Chair

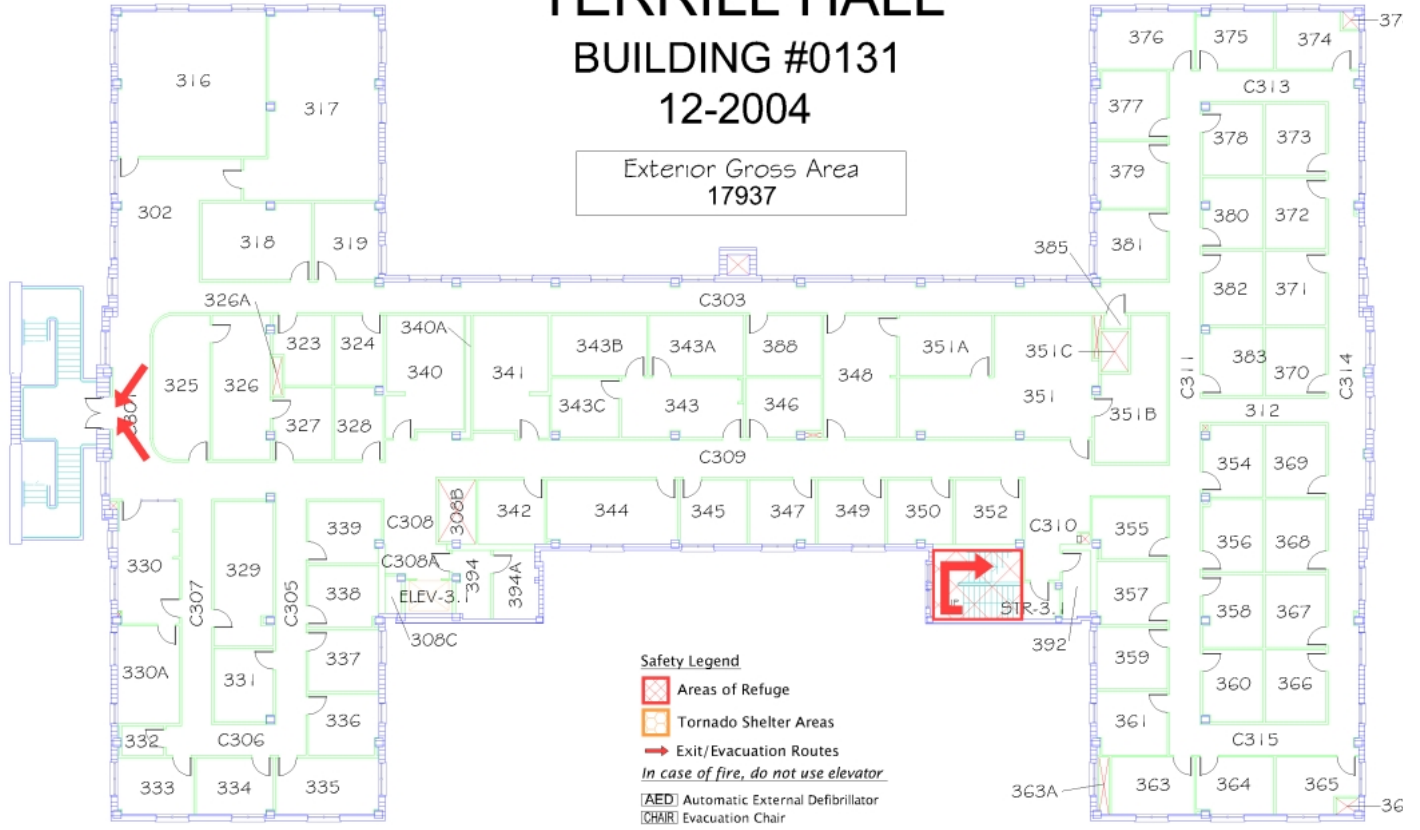


SECOND FLOOR PLAN

[Print Full Size Map](#)

TERRILL HALL BUILDING #0131 12-2004

Exterior Gross Area
17937



Safety Legend
Areas of Refuge
Tornado Shelter Areas
Exit/Evacuation Routes
In case of fire, do not use elevator.
[AED] Automatic External Defibrillator
[CHAIR] Evacuation Chair



THIRD FLOOR PLAN

