

Emergency Evacuation Procedures

Sycamore Hall

Severe Weather

In the event of severe weather, all building occupants should immediately seek shelter in the designated shelter-in-place area in the building. If unable to safely move to the designated shelter-in-place area, seek shelter in a windowless interior room or hallway on the lowest floor of the building.

All building occupants should take shelter in the basement and 1st floor of the library

Bomb Threat/Fire

In the event of a bomb threat or fire in the building, all building occupants should immediately evacuate the building using the nearest exit. Once outside, proceed to the designated assembly area. If unable to safely move to the designated assembly area, contact one or more members of your department or unit to let them know you are safe and inform them of your whereabouts.

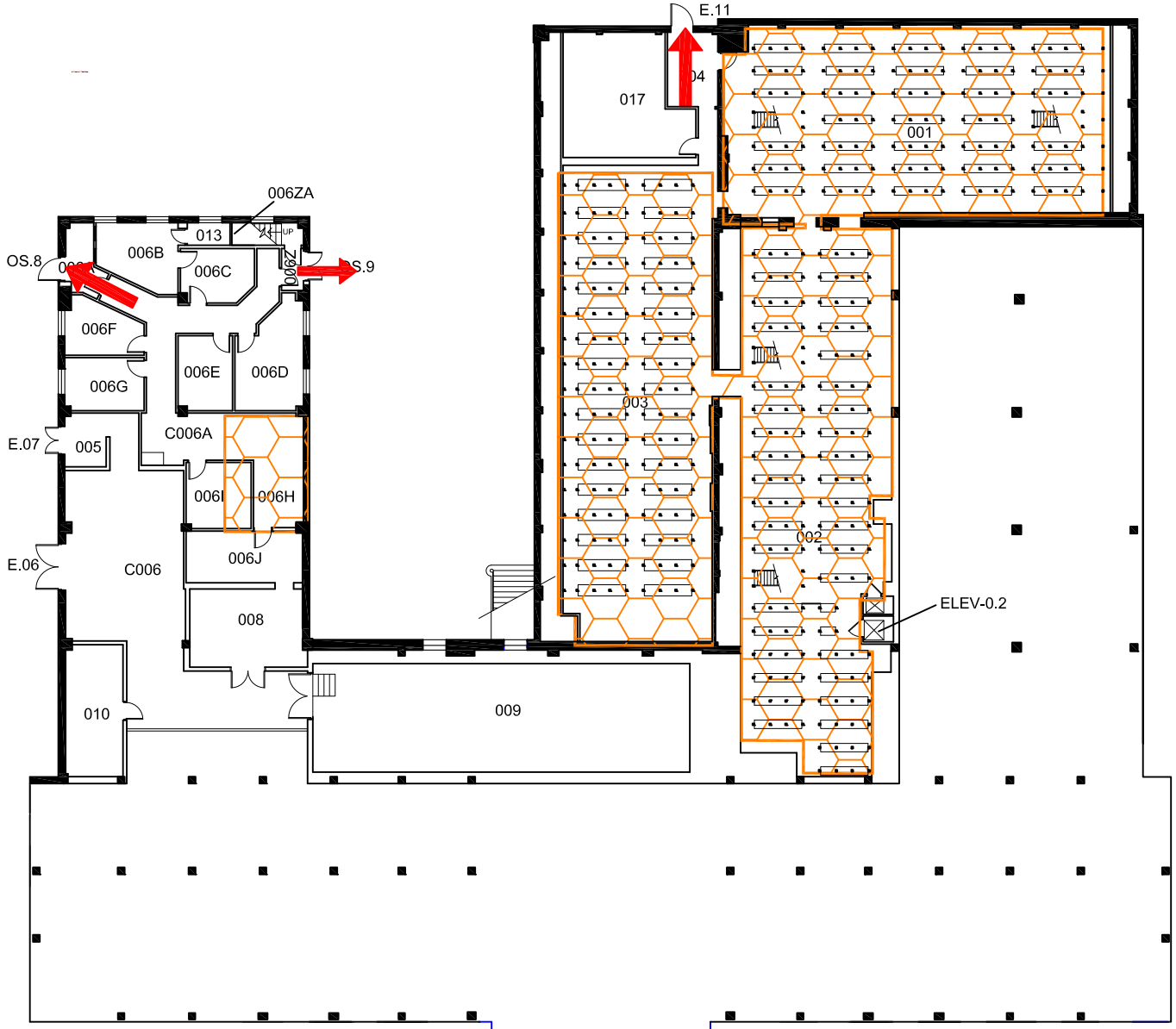
All building occupants should immediately evacuate the building and proceed to the area north of the University Union.

SYCAMORE HALL

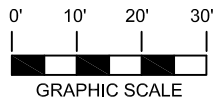
BLDG #0111

11-2012






Exterior Gross Area
15753



BASEMENT FLOOR PLAN



Safety Legend

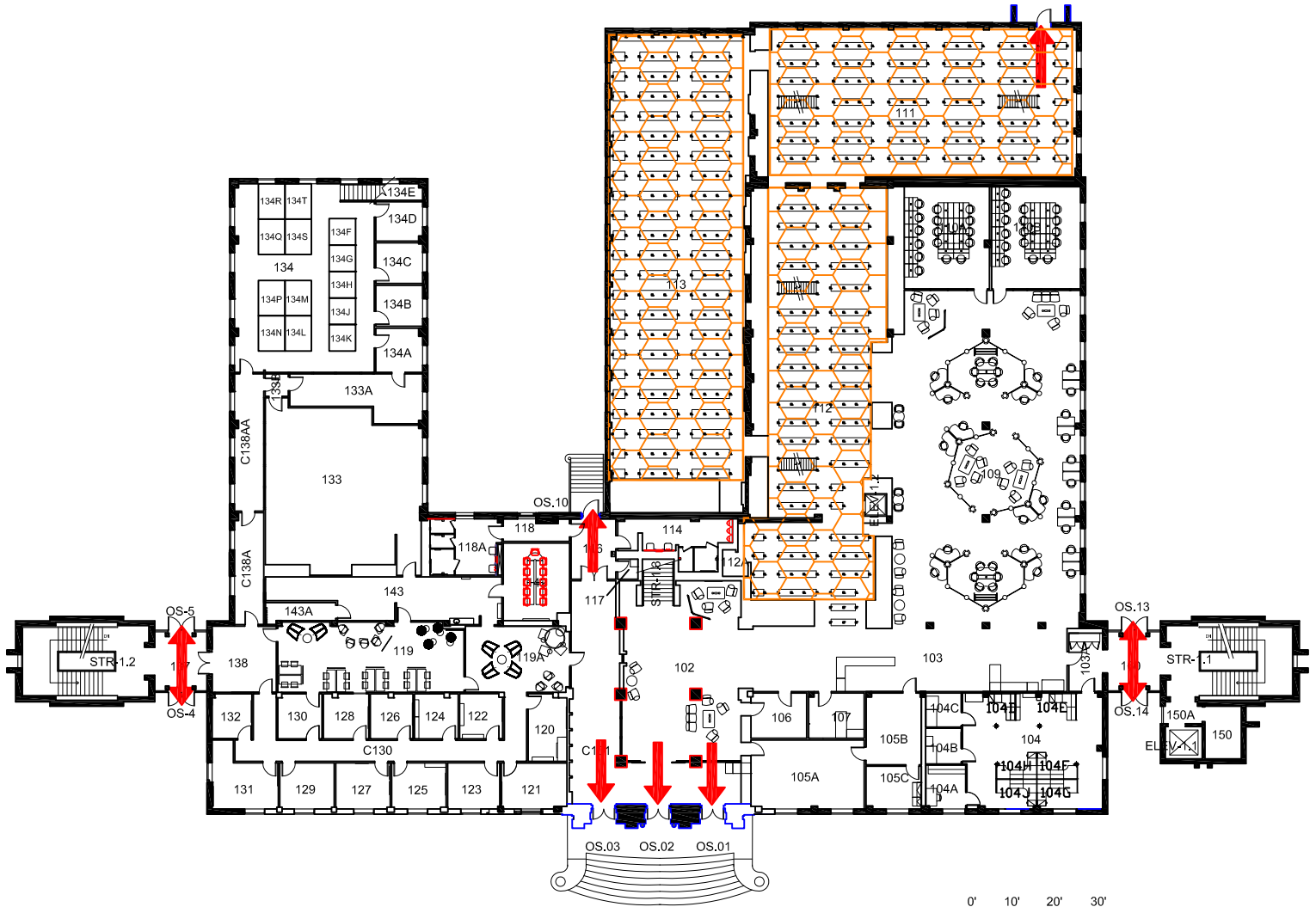
-  Areas of Refuge
-  Tornado Shelter Areas
-  Exit/Evacuation Routes
- In case of fire, do not use elevator*
-  AED Automatic External Defibrillator
-  CHAIR Evacuation Chair

SYCAMORE HALL

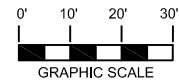
BLDG #0111

03-2016



Exterior Gross Area
30990





N ⊕ **FIRST FLOOR PLAN**




Safety Legend

-  Areas of Refuge
-  Tornado Shelter Areas

 Exit/Evacuation Routes
In case of fire, do not use elevator

 Automatic External Defibrillator

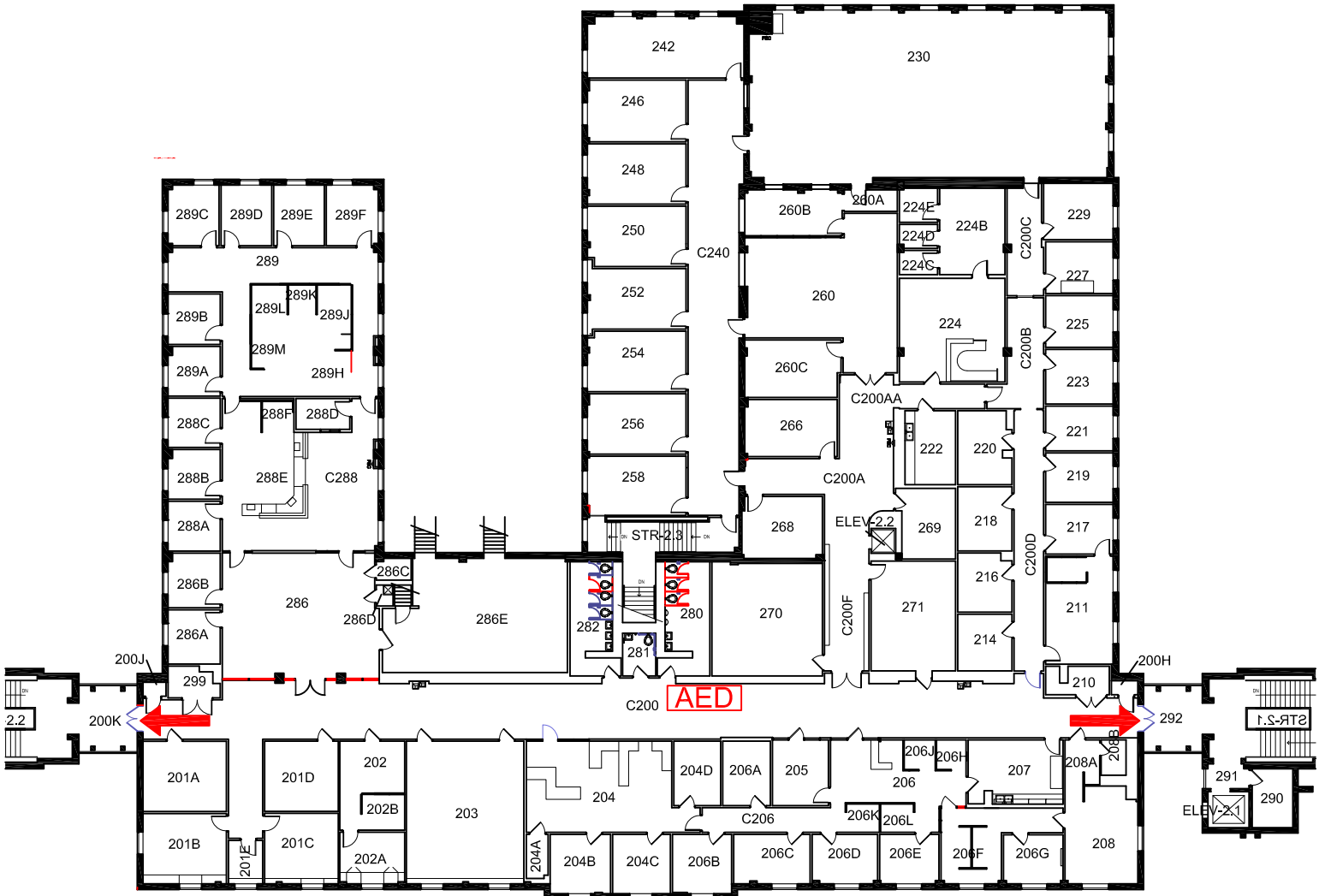
 Evacuation Chair

SYCAMORE HALL

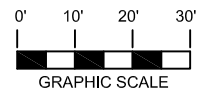
BLDG #0111

06-2016






Exterior Gross Area
30990



⊕ SECOND FLOOR PLAN



Safety Legend

-  Areas of Refuge
-  Tornado Shelter Areas
-  Exit/Evacuation Routes
- In case of fire, do not use elevator*
-  AED Automatic External Defibrillator
-  CHAIR Evacuation Chair