

# Emergency Evacuation Procedures

## RTVF Building

### Page Navigation

- [Severe Weather](#)
  - [Bomb Threat/Fire](#)
  - [Building Evacuation Maps](#)
- 

### Severe Weather

In the event of severe weather, all building occupants should immediately seek shelter in the designated shelter-in-place area in the building. If unable to safely move to the designated shelter-in-place area, seek shelter in a windowless interior room or hallway on the lowest floor of the building.

**All building occupants should take shelter in the interior hallways of the first floor.**

---

### Bomb Threat/Fire

In the event of a bomb threat or fire in the building, all building occupants should immediately evacuate the building using the nearest exit. Once outside, proceed to the designated assembly area. If unable to safely move to the designated assembly area, contact one or more members of your department or unit to let them know you are safe and inform them of your whereabouts.

Persons with mobility impairments who are unable to safely exit the building should move to a designated area of refuge and await assistance from emergency responders.

**All building occupants shall immediately proceed to parking lot 50 east of the RTVF building.**

---

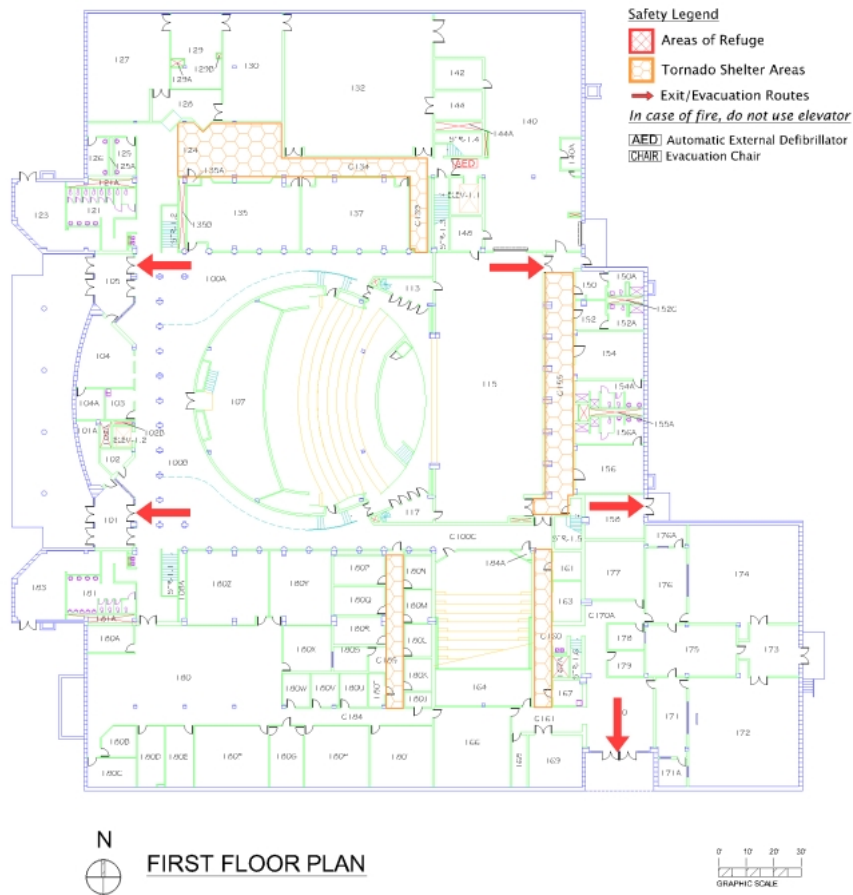
### Building Evacuation Maps

[Print Full Size Map](#)

# RADIO, TV, FILM AND PERFORMANCE MEDIA BUILDING

BUILDING #0140  
06-2007

Exterior Gross Area  
59382



[Print Full Size Map](#)

# RADIO, TV, FILM AND PERFORMANCE MEDIA BUILDING

BUILDING #0140  
04- 2008

Exterior Gross Area  
45804

