

Emergency Evacuation Procedures

Discovery Park

Severe Weather

In the event of severe weather, all building occupants should immediately seek shelter in the designated shelter-in-place area in the building. If unable to safely move to the designated shelter-in-place area, seek shelter in a windowless interior room or hallway on the lowest floor of the building.

All building occupants should take shelter in the underground tunnels if time permits, or in the interior hallways of wings E, F, or interior B Classrooms.

Bomb Threat/Fire

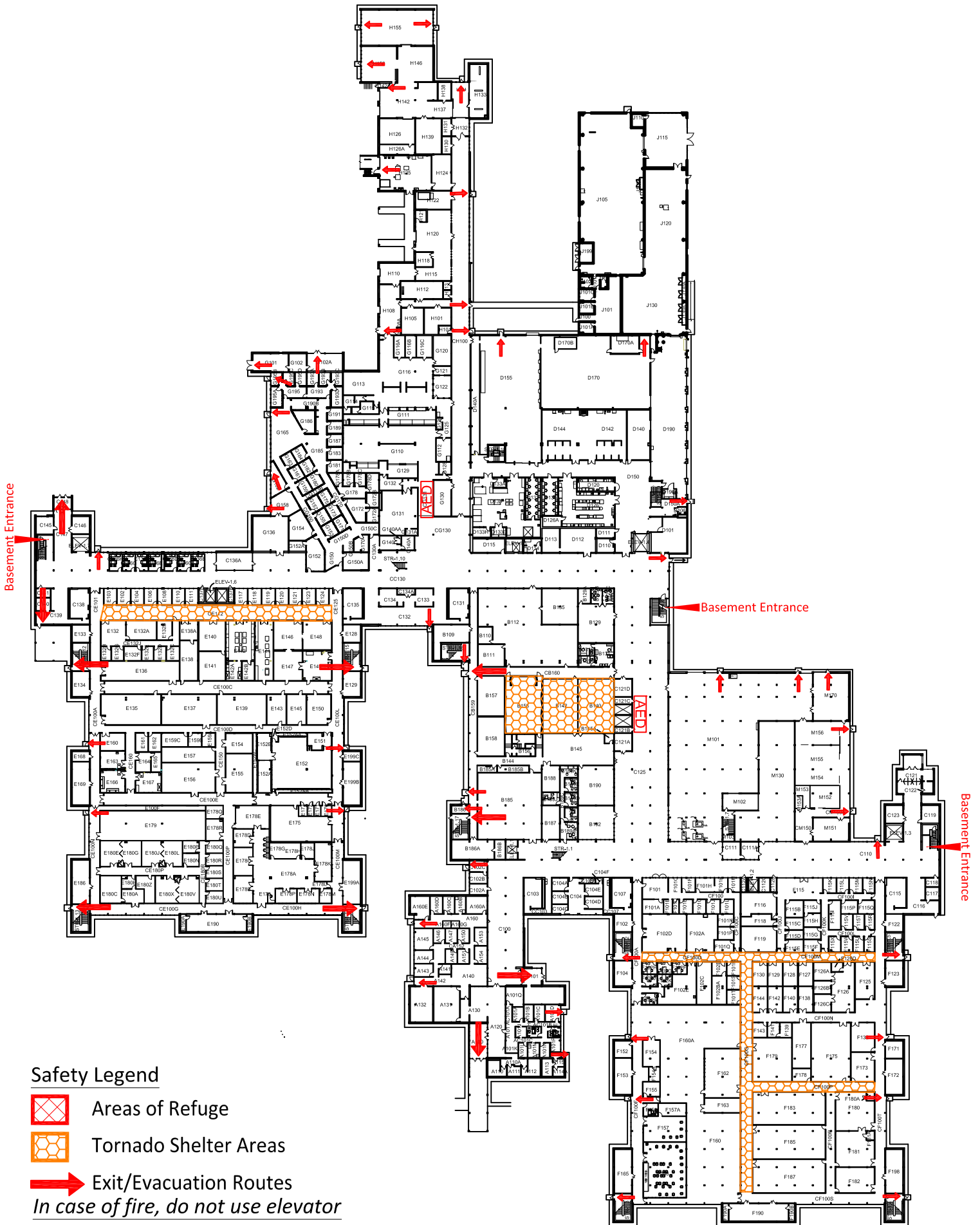
In the event of a bomb threat or fire in the building, all building occupants should immediately evacuate the building using the nearest exit. Once outside, proceed to the designated assembly area. If unable to safely move to the designated assembly area, contact one or more members of your department or unit to let them know you are safe and inform them of your whereabouts.

All building occupants should immediately evacuate the building and proceed to your designated emergency evacuation meeting area.






Discovery Park

1st Floor

Exterior Gross Area
337467





Safety Legend


-  Areas of Refuge
-  Tornado Shelter Areas
-  Exit/Evacuation Routes
- In case of fire, do not use elevator*
-  AED Automatic External Defibrillator
-  CHAIR Evacuation Chair

Discovery Park 2nd Floor

Safety Legend

 Areas of Refuge

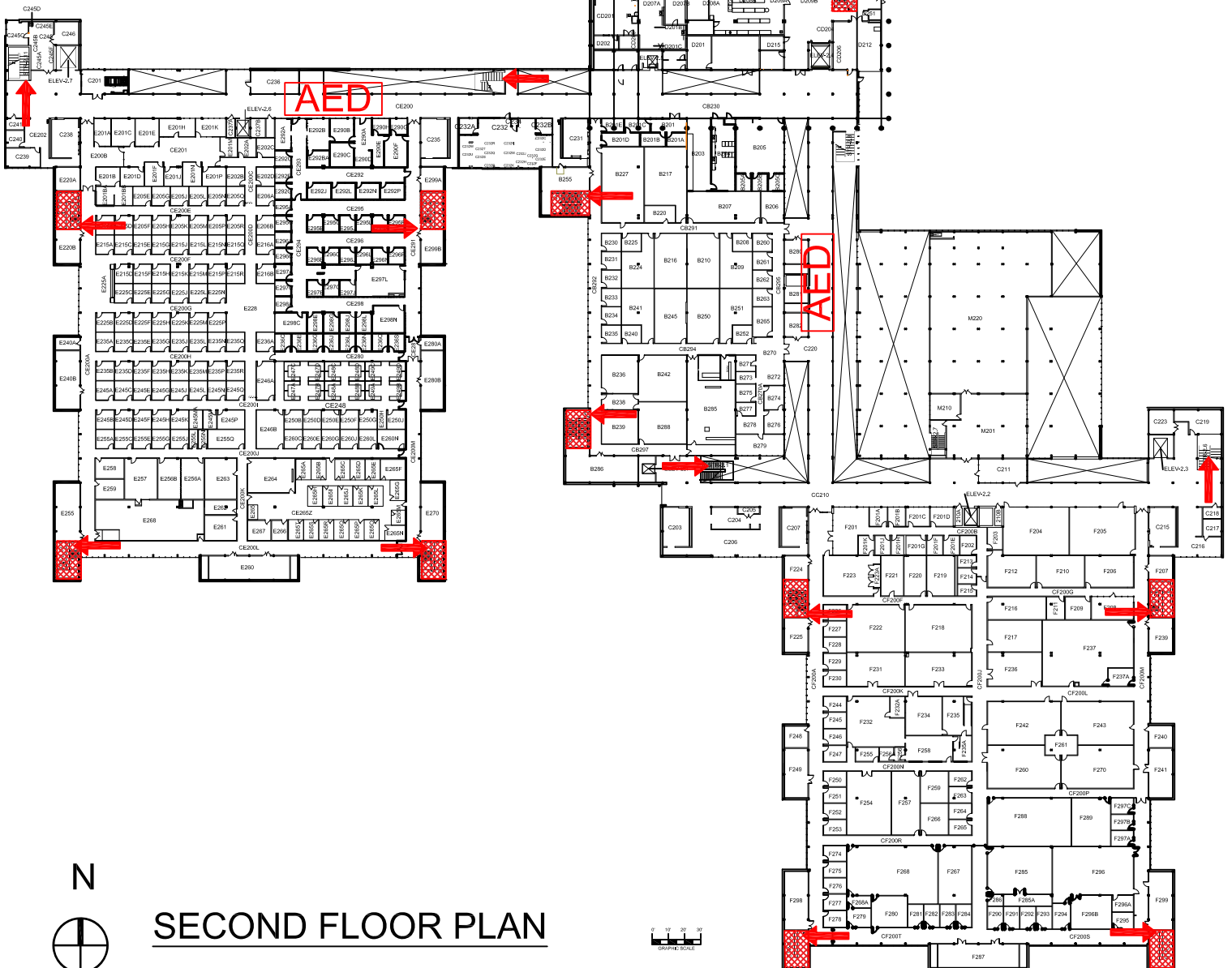
 Tornado Shelter Areas

 Exit/Evacuation Routes

In case of fire, do not use elevator

AED Automatic External Defibrillator

CHAIR Evacuation Chair



SECOND FLOOR PLAN