

Emergency Evacuation Procedures

Chestnut Hall

Severe Weather

In the event of severe weather, all building occupants should immediately seek shelter in the designated shelter-in-place area in the building. If unable to safely move to the designated shelter-in-place area, seek shelter in a windowless interior room or hallway on the lowest floor of the building.

All building occupants should take shelter in the interior hallway and room 120 a & b on the first floor.

Bomb Threat/Fire

In the event of a bomb threat or fire in the building, all building occupants should immediately evacuate the building using the nearest exit. Once outside, proceed to the designated assembly area. If unable to safely move to the designated assembly area, contact one or more members of your department or unit to let them know you are safe and inform them of your whereabouts.

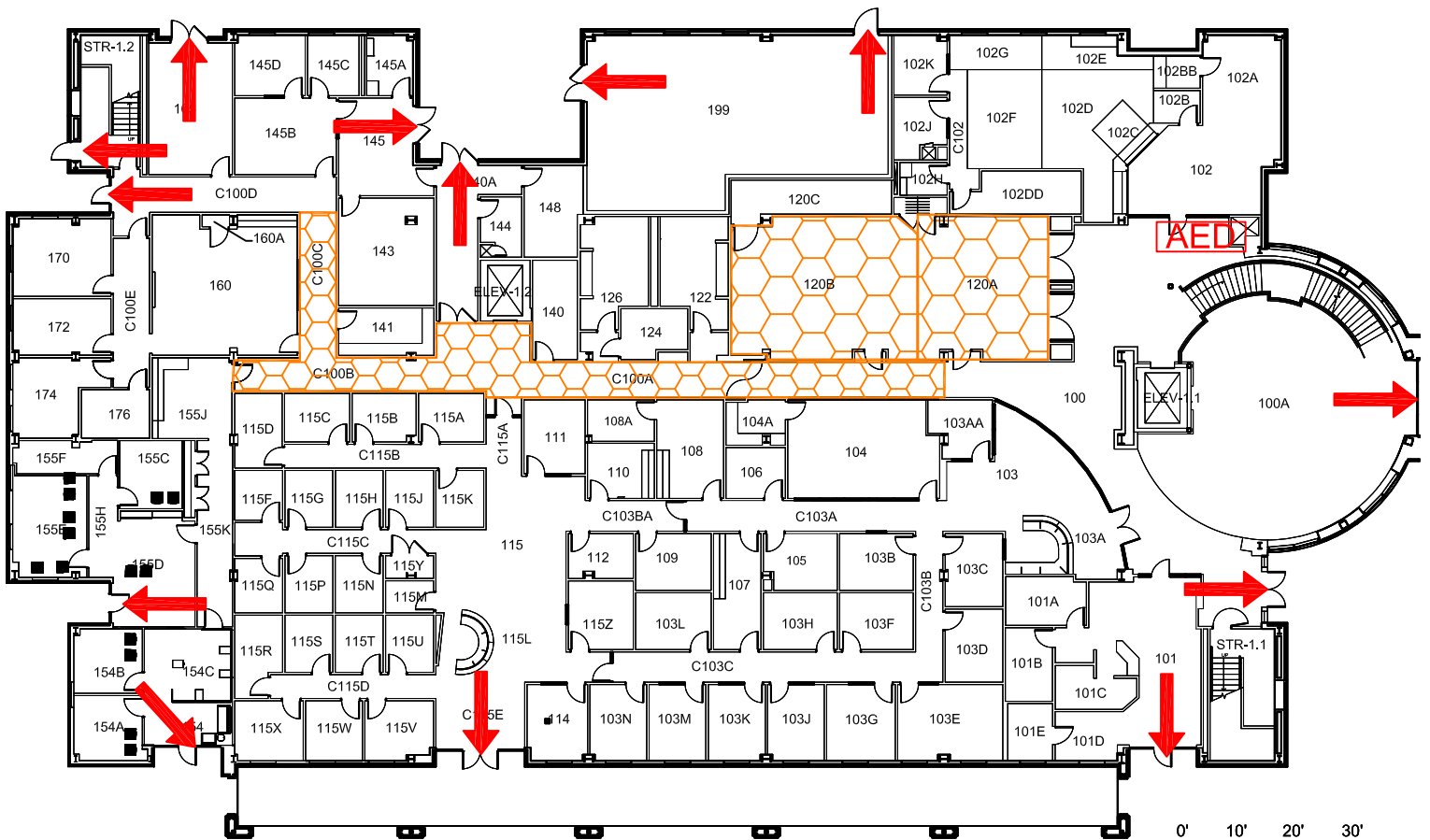
Persons with mobility impairments who are unable to safely exit the building should move to a designated area of refuge and await assistance from emergency responders.

All building occupants should immediately evacuate the building and proceed to the front of the Physical Education Building (PEB).

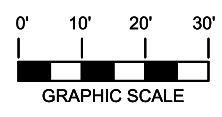
CHESTNUT HALL

BLDG #0136
07-2014



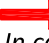


Exterior Gross Area
26313



N  **FIRST FLOOR PLAN**



Safety Legend

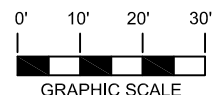
-  Areas of Refuge
-  Tornado Shelter Areas
-  Exit/Evacuation Routes
- In case of fire, do not use elevator*
-  Automatic External Defibrillator
-  Evacuation Chair

CHESTNUT HALL

BLDG #0136






10-2006

Exterior Gross Area
25194



N  **SECOND FLOOR PLAN**

Safety Legend

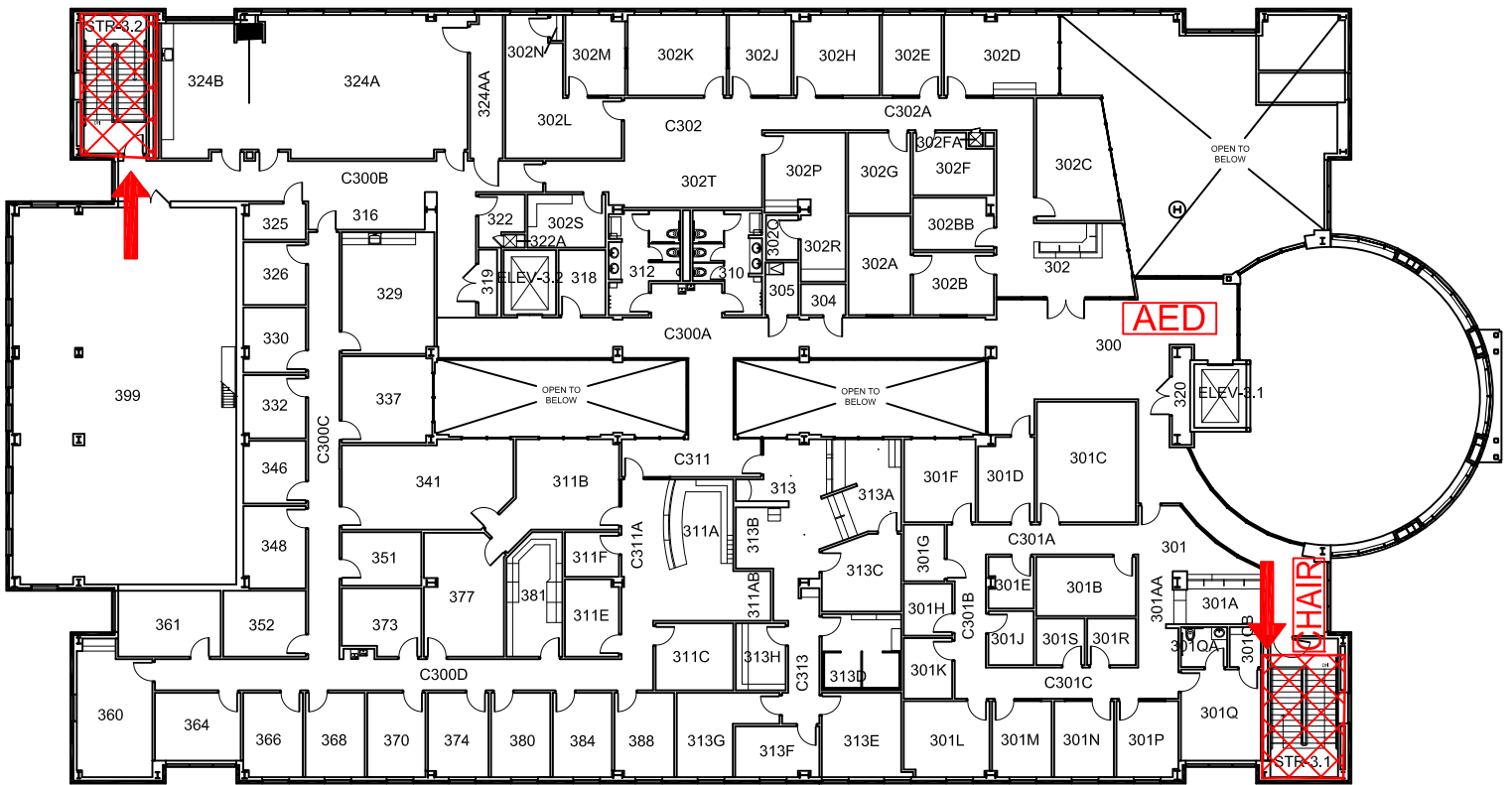
-  Areas of Refuge
-  Tornado Shelter Areas
-  Exit/Evacuation Routes
- In case of fire, do not use elevator*
-  Automatic External Defibrillator
-  Evacuation Chair

CHESTNUT HALL

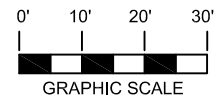
BLDG #0136

09-2009

Exterior Gross Area
22614



THIRD FLOOR PLAN



Safety Legend

- Areas of Refuge
- Tornado Shelter Areas

Exit/Evacuation Routes
In case of fire, do not use elevator

AED Automatic External Defibrillator

CHAIR Evacuation Chair