

Emergency Evacuation Procedures

Bruce Hall

Page Navigation

- [Severe Weather](#)
 - [Bomb Threat/Fire](#)
 - [Building Evacuation Maps](#)
-

Severe Weather

In the event of severe weather, all building occupants should immediately seek shelter in the designated shelter-in-place area in the building. If unable to safely move to the designated shelter-in-place area, seek shelter in a windowless interior room or hallway on the lowest floor of the building.

Residents should take shelter in the hallways of the lowest level of each respective wing away from any windows.

- **Wing A should go to the first floor of wing A**
 - **Wing B should go to the first floor of wing B (not including the laundry facilities and music practice pods)**
 - **Wing C should go to the second floor of wing C**
 - **Wing D should go to the basement, including the laundry facilities and music practice pods**
-

Bomb Threat/Fire

In the event of a bomb threat or fire in the building, all building occupants should immediately evacuate the building using the nearest exit. Once outside, proceed to the designated assembly area. If unable to safely move to the designated assembly area, contact your RA to let them know you are safe and inform them of your whereabouts.

Persons with mobility impairments who are unable to safely exit the building should move to a designated area of refuge and await assistance from emergency responders.

Residents should congregate in parking lot 9 north of Bruce Hall.

Building Evacuation Maps

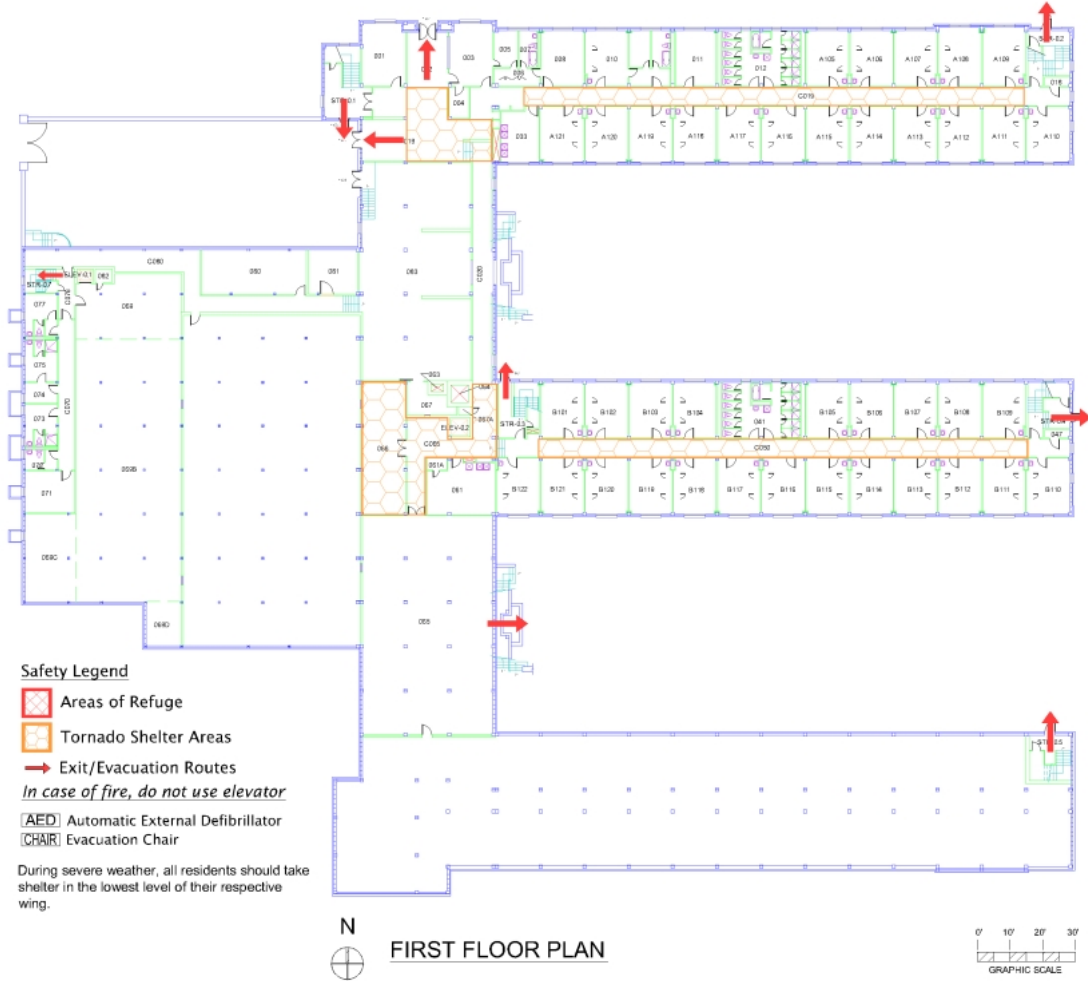
[Print Full Size Map](#)

BRUCE HALL

BLDG # 0175

11-2008

Exterior Gross Area
30846



[Print Full Size Map](#)

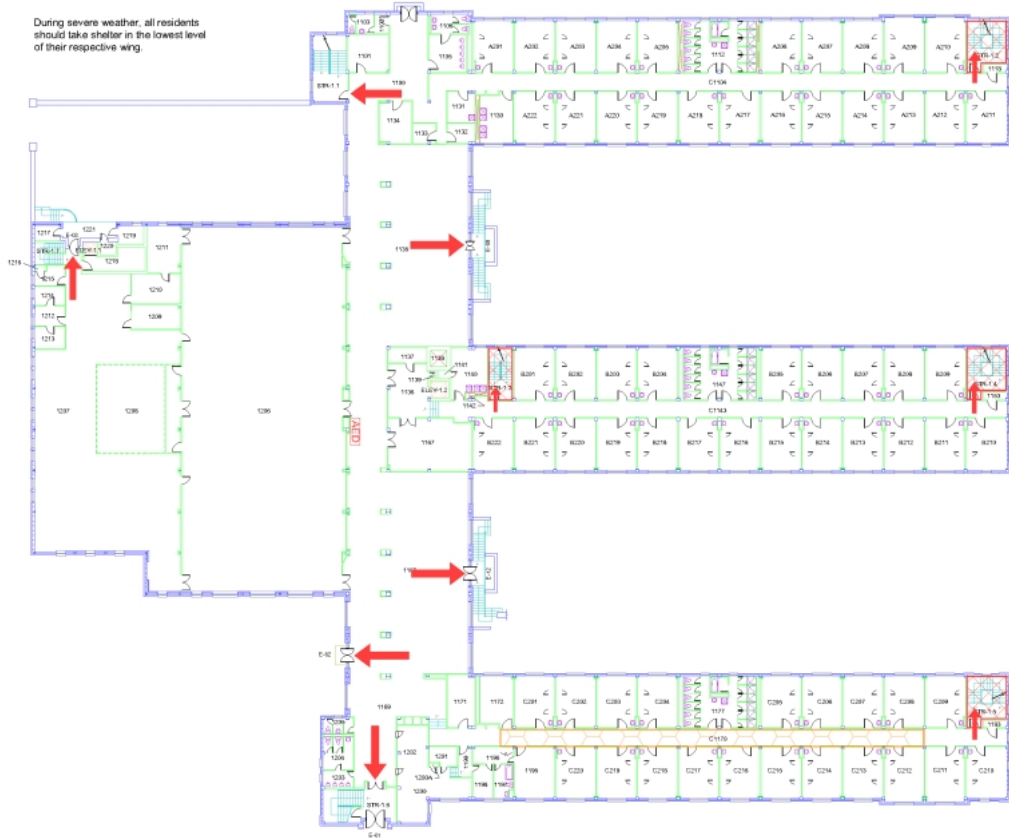
BRUCE HALL

BLDG # 0175
07-2008

Exterior Gross Area
45940

- Safety Legend
- Areas of Refuge
 - Tornado Shelter Areas
 - Exit/Evacuation Routes
 - In case of fire, do not use elevator*
 - AED Automatic External Defibrillator
 - Evacuation Chair

During severe weather, all residents should take shelter in the lowest level of their respective wing.



SECOND FLOOR PLAN




[Print Full Size Map](#)


BRUCE HALL


BLDG # 0175
06-2008

Exterior Gross Area
33909


Safety Legend


 Areas of Refuge

 Tornado Shelter Areas

 Exit/Evacuation Routes

In case of fire, do not use elevator

 Automatic External Defibrillator

 Evacuation Chair

During severe weather, all residents should take shelter in the lowest level of their respective wing.



[Print Full Size Map](#)


BRUCE HALL


BLDG # 0175


06-2008

Exterior Gross Area
19137


Safety Legend


 Areas of Refuge

 Tornado Shelter Areas

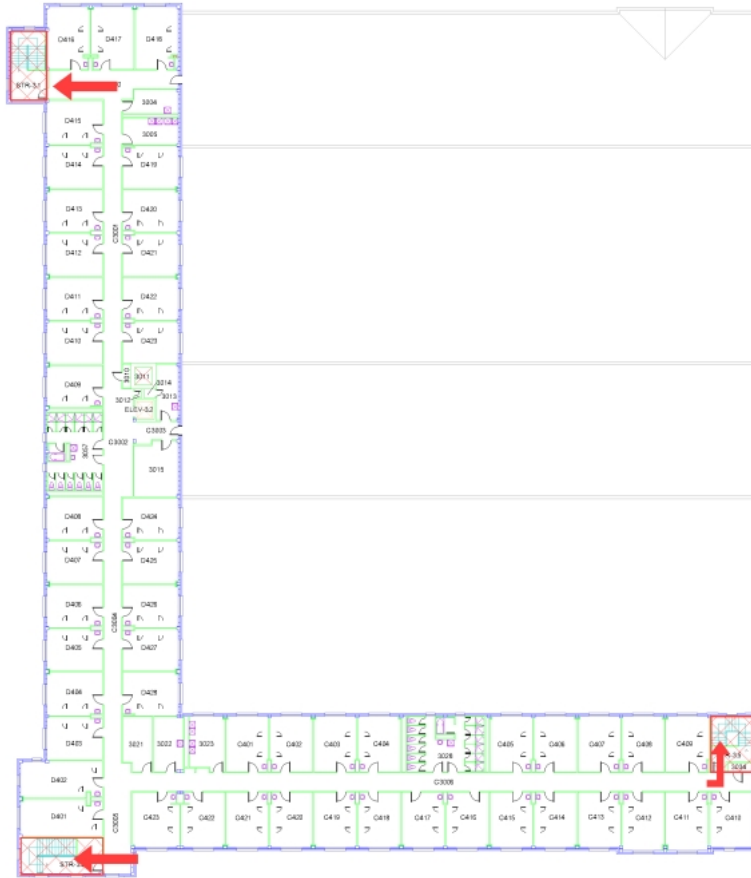
 Exit/Evacuation Routes

In case of fire, do not use elevator

 AED Automatic External Defibrillator

 CHAIR Evacuation Chair

During severe weather, all residents should take shelter in the lowest level of their respective wing.



FOURTH FLOOR PLAN

