

Emergency Evacuation Procedures

Art Building

Severe Weather

In the event of severe weather, all building occupants should immediately seek shelter in the designated shelter-in-place area in the building. If unable to safely move to the designated shelter-in-place area, seek shelter in a windowless interior room or hallway on the lowest floor of the building.

All building occupants should take shelter in room 112, hallway outside of 112 on east side of building, and the stairwells on first floor, west side of building.

Bomb Threat/Fire

In the event of a bomb threat or fire in the building, all building occupants should immediately evacuate the building using the nearest exit. Once outside, proceed to the designated assembly area. If unable to safely move to the designated assembly area, contact one or more members of your department or unit to let them know you are safe and inform them of your whereabouts.

Persons with mobility impairments who are unable to safely exit the building should move to a designated area of refuge and await assistance from emergency responders.

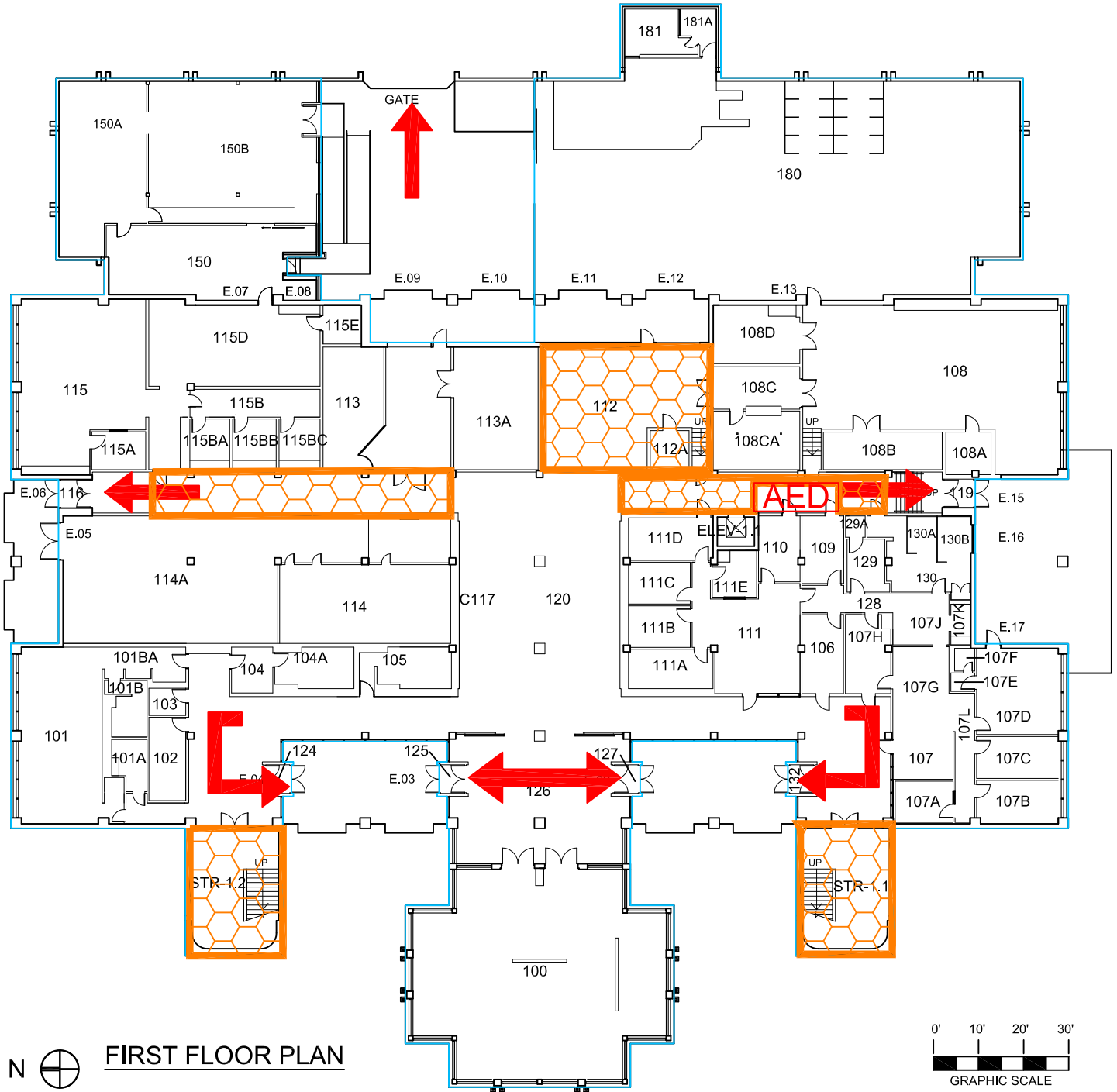
All building occupants should immediately evacuate the building and proceed to parking lot 9 south of the building.

ART BUILDING

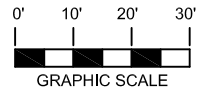
BLDG #0153

02-2016


Exterior Gross Area
37164





FIRST FLOOR PLAN




Safety Legend


 Areas of Refuge

 Tornado Shelter Areas

 Exit/Evacuation Routes

In case of fire, do not use elevator

 Automatic External Defibrillator

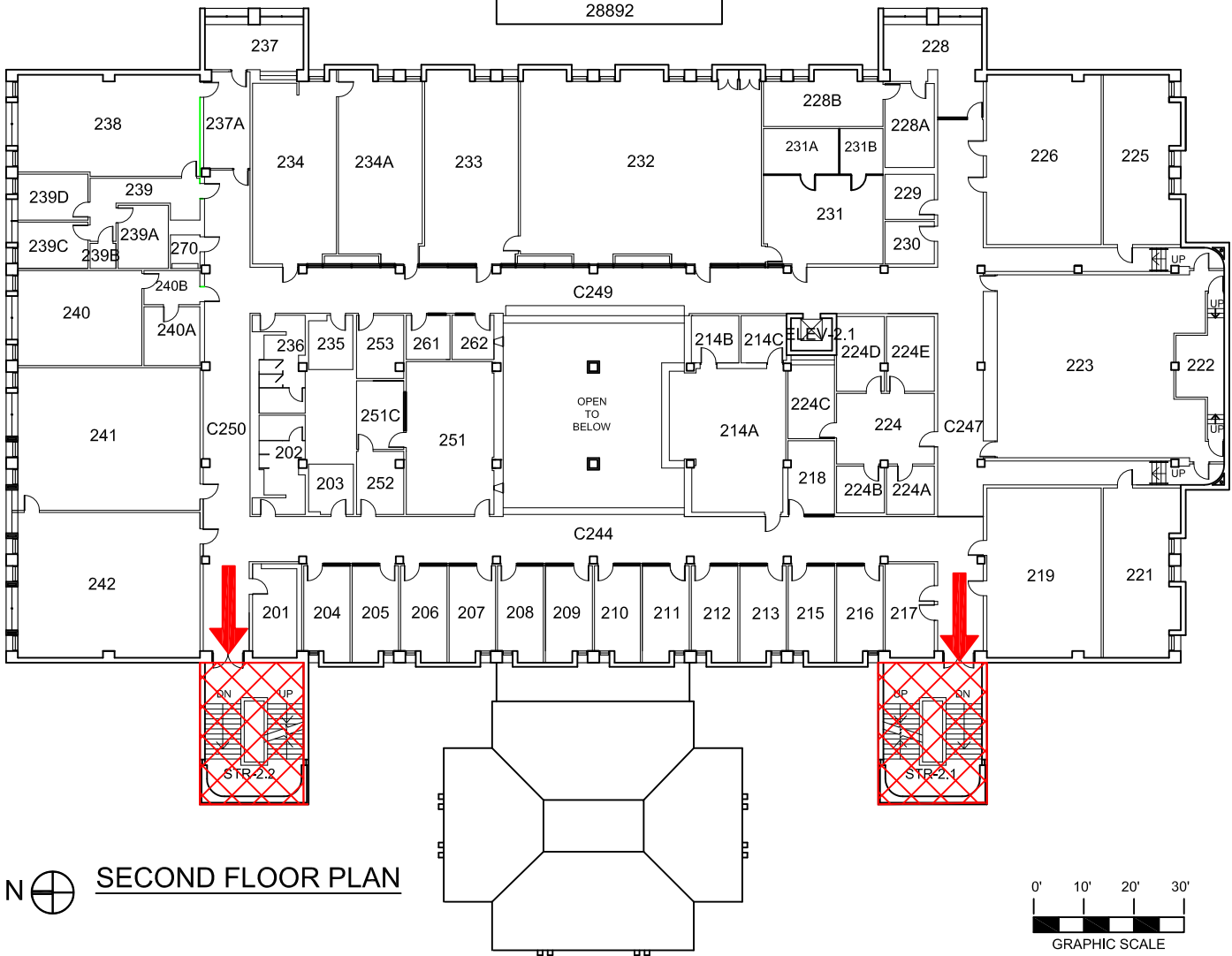
 Evacuation Chair

ART BUILDING

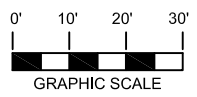
BLDG #0153

06-2014

Exterior Gross Area
28892



N **SECOND FLOOR PLAN**



Safety Legend

- Areas of Refuge
- Tornado Shelter Areas

Exit/Evacuation Routes
In case of fire, do not use elevator

Automatic External Defibrillator

Evacuation Chair

