



Campus Carry

Senate Bill 11

What does “Campus Carry” mean?

- The law will allow those licensed individuals to carry a concealed handgun into buildings on public university campuses.
- “Campus Carry” is **not** “Open Carry.”
- “Campus Carry” would allow concealed handgun licensees to carry **concealed handguns** into buildings on college campuses, except in locations the University establishes as prohibited.
- “Open Carry” would allow concealed handgun licensees to carry on the outside of their clothing a properly licensed gun. Under the new law, **openly** carrying such **handguns will still not be allowed** on college campuses.



Campus Carry

- Campus Carry vs. Open Carry
- Effective date August 1, 2016.
- Institution may establish rules for storage in residence facilities.
- After consulting with students, staff, and faculty the President or CEO **shall** establish rules regarding the carrying of concealed handguns by license holders on the campus.



Campus Carry (continued)

- President or CEO **may not** establish rules that generally prohibit license holders from carrying concealed handguns.
- Institution must give **effective notice** of a premise which license holders may not carry.
- Within 90 days after rules are established, Board of Regents **shall** review provisions.
- Board may vote to amend rules. If amended, provisions are final.



Campus Carry (continued)

- Institution must publish rules on website.
- By September 1 of each even numbered years, institution **shall** submit report to legislature describing rules and explain the reasons for the rules.
- CHL holders must intentionally and knowingly display the handgun in plain view of another person to be criminal.



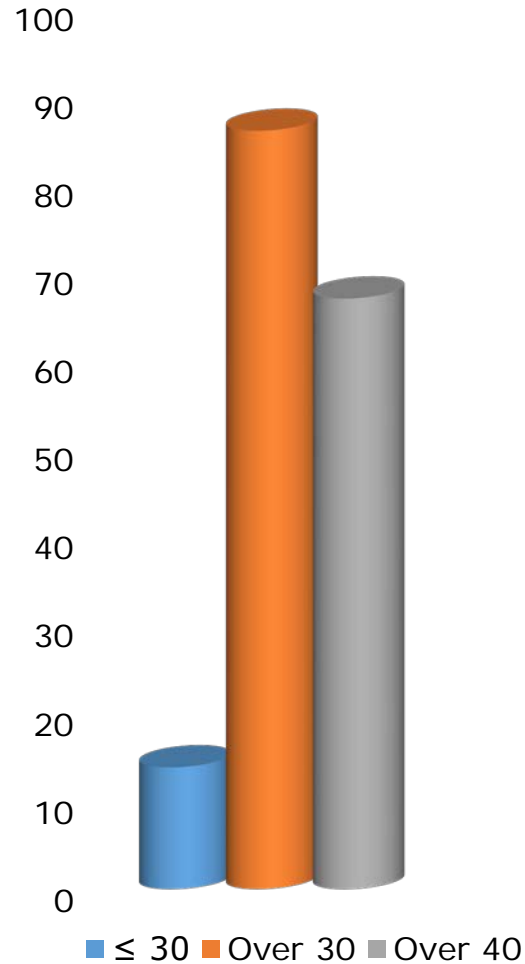
Campus Carry (continued)

Effective Notice

“Pursuant to Section 30.06, Penal Code (trespass by license holder with a concealed handgun), a person licensed under Subchapter H, Chapter 411, Government Code (handgun licensing law), may not enter this property with a concealed handgun.”



2014 Demographics



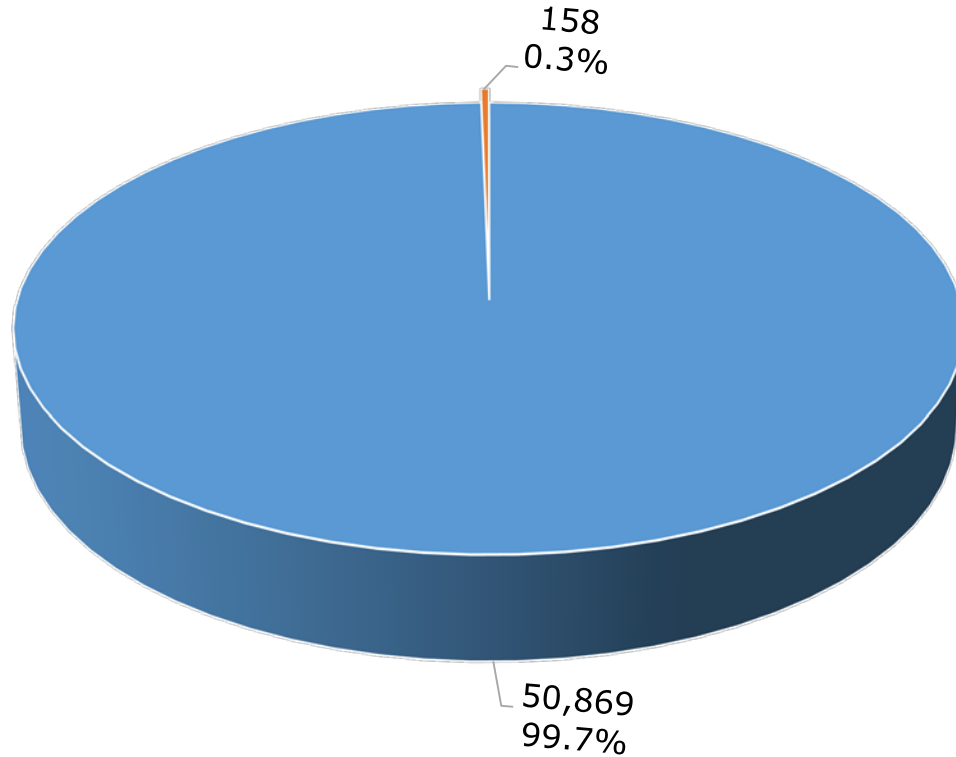
Texas DPS

Around 3% of population had a CHL.

- 86% of CHLs issued to individuals over 30.
- 67% of CHLs issued to individuals over 40.



Texas DPS 2013 Convictions



CHL holders represent less than one-third of one percent of the total convictions in Texas; i.e., 0.3%.

■ Total Convictions ■ Convictions of CHL Holders



2013 Texas Convictions

	Total Convictions	CHL Convictions
Murder	364	3
Aggravated Assault	3182	10
Kidnapping	152	0
Robbery	3191	0
Burglary	7730	1
Terroristic Threat	1078	0



Moving Ahead

- Do we have locations that should be permanently posted to prohibit carrying a handgun? (e.g., stadium, coliseum, health center, etc.)? Must post signs.
- Do we need a process to temporarily prohibit handguns at a location based upon a function (e.g., parties, alcohol, past issues, etc.)?
- We will need temporary signs to post.
- Who do we designate the authority to make this decision?



Moving Ahead (continued)

- Are we going to provide a location in each residence hall to store handguns or a central location? Consider the cost, staffing and training requirements this would require.
- Can we assign CHL holders to single occupancy rooms and provide a hotel safe? Cost around \$100.
- Given the fire safety concerns, we may want to consider adding hotel safes to each room at some point.





Thank you.

UNT | DALLAS
UNIVERSITY OF NORTH TEXAS AT DALLAS