

## LightRaise™ 60wi interactive projector

The LightRaise 60wi projector is the only integrated interactive projector that supports touch and pen-enabled interactivity, enabling two students to simultaneously collaborate. The LightRaise projector includes SMART Notebook software and access to high-quality lesson content, service and support.

The LightRaise 60wi interactive projector enables you to add interactivity to almost any surface. This touch and pen-enabled, ultra-short-throw interactive projector enables two students to instantly start collaborating on lesson activities at the same time.

### Experience collaborative learning

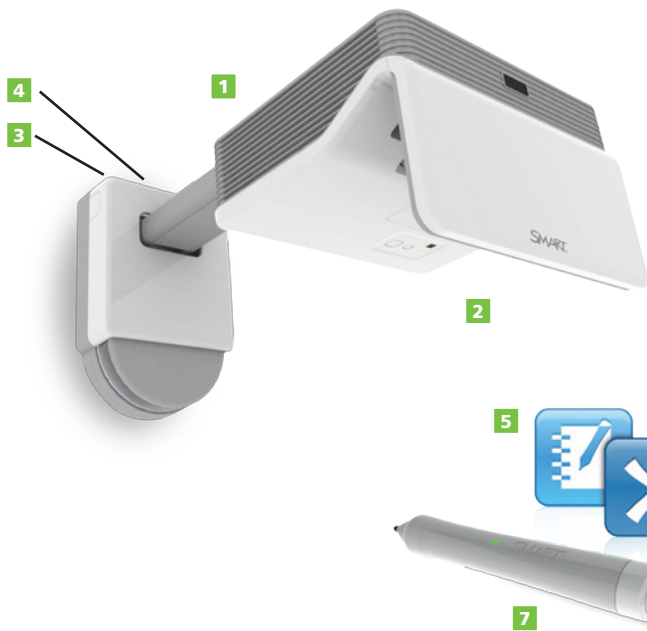
The LightRaise 60wi projector is the only interactive projector that provides touch and pen-enabled input, enabling two students to simultaneously write, draw and manipulate content in SMART Notebook™ collaborative learning software using a finger or the interactive pen. The LightRaise 60wi enables educators to deliver engaging and collaborative content and gives students the ability to interact with material in richer, more engaging ways.

### Bring learning to life with SMART Notebook

The LightRaise projector includes award-winning SMART Notebook software, which sets the standard for creating, delivering and managing interactive lessons that motivate students. Through SMART Notebook, educators also have immediate access to over 60,000 learning resources on the SMART Exchange™ website.

### Add interactivity almost anywhere

With the LightRaise projector, you can turn almost any surface, including a dry-erase whiteboard, into an interactive, small-group, collaborative learning space. The ultra-short-throw interactive projector enables you to create screen sizes of up to 100" (254 cm) on the diagonal. Complementary SMART solutions integrate with the LightRaise projector through SMART Notebook software, so you always have the option to extend and enhance your classroom solution in the future.



- 1 Ultra-short-throw projector with a 0.36:1 throw ratio
- 2 Projects image sizes from 67" to 100" (170–254 cm)
- 3 Integrated speaker and microphone input
- 4 HDMI input, two VGA inputs and network connection
- 5 SMART Notebook collaborative learning software
- 6 Immediate access to the SMART Exchange website
- 7 Rechargeable interactive pens

## Key features

### Touch and pen-enabled interaction

The LightRaise 60wi interactive projector supports accurate touch and pen-input interactivity on flat surfaces.

### Dual-user interactivity

Two students can simultaneously interact and collaborate with a finger or interactive pen.

### SMART Notebook software included

Millions of educators worldwide are using SMART Notebook collaborative learning software. When you choose the LightRaise projector, you can be sure you are standardizing on software that is proven, popular and backed by a global community of educators.

### Access to lesson content

Get immediate access to the SMART Exchange website, where educators connect with each other and save on lesson preparation time by sharing and downloading classroom-ready learning resources. The more than 60,000 resources on SMART Exchange include standards-correlated lessons and applications from leading educational publishers and content providers.

### Integration with SMART solutions

The LightRaise 60wi interactive projector enables you to make the most of your existing technology investment because it integrates with other SMART products, such as the SMART Response interactive response system, through SMART Notebook software. With the projector, it's easy to switch between multiple lesson applications, saving time and reducing distractions.

### Multiple installation options

With the ability to project images of a range of sizes, up to 100" (254 cm), the LightRaise 60wi gives you the flexibility to turn virtually any surface into an interactive and collaborative learning space.

### Accommodates a fixed budget

The LightRaise interactive projector fits economic and pedagogical needs by offering an affordable way for students to experience the benefits of touch, collaboration and SMART Notebook software through large, widescreen, interactive images.

### Ultra-short-throw projector

With an exceptional 0.36:1 throw ratio, the projector eliminates most shadows and glare, reducing unnecessary classroom distractions while delivering a crisp, bright image the entire class can see.

### Audio components

Two 10 watt speakers and microphone input provide audio capabilities for the LightRaise interactive projector.

### Interactive pen and pen holder

The projector comes with two rechargeable interactive pens and convenient pen holder in which to store it.

### SMART Projector Care Plus program

Your investment is covered under the SMART Projector Care Plus program, which includes a three-year warranty, 24-hour advance replacement and preferential pricing on projector lamp upgrades and replacements.

### Support for multiple operating systems

The LightRaise interactive projector supports both Microsoft® Windows® and Mac operating systems.

### Low power consumption

The interactive projector consumes less than one watt of power in standby mode.



205 Westwood Ave, Long Branch, NJ 07740  
 Phone: 866-94 BOARDS (26273) / (732)-222-1511  
 Fax: (732)-222-7088 | E-mail: sales@touchboards.com

## SMART Technologies

Toll free 1.866.518.6791 (U.S./Canada)

or +1.403.228.5940

[smarttech.com](http://smarttech.com)