

Emergency Evacuation Procedures

Santa Fe Square

Page Navigation

- [Severe Weather](#)
 - [Bomb Threat/Fire](#)
 - [Building Evacuation Maps](#)
-

Severe Weather

In the event of severe weather, all building occupants should immediately seek shelter in the designated shelter-in-place area in the building. If unable to safely move to the designated shelter-in-place area, seek shelter in a windowless interior room or hallway on the lowest floor of the building.

Residents should take shelter in the hallways and restrooms on the lowest level of their respective wing away from any windows.

Bomb Threat/Fire

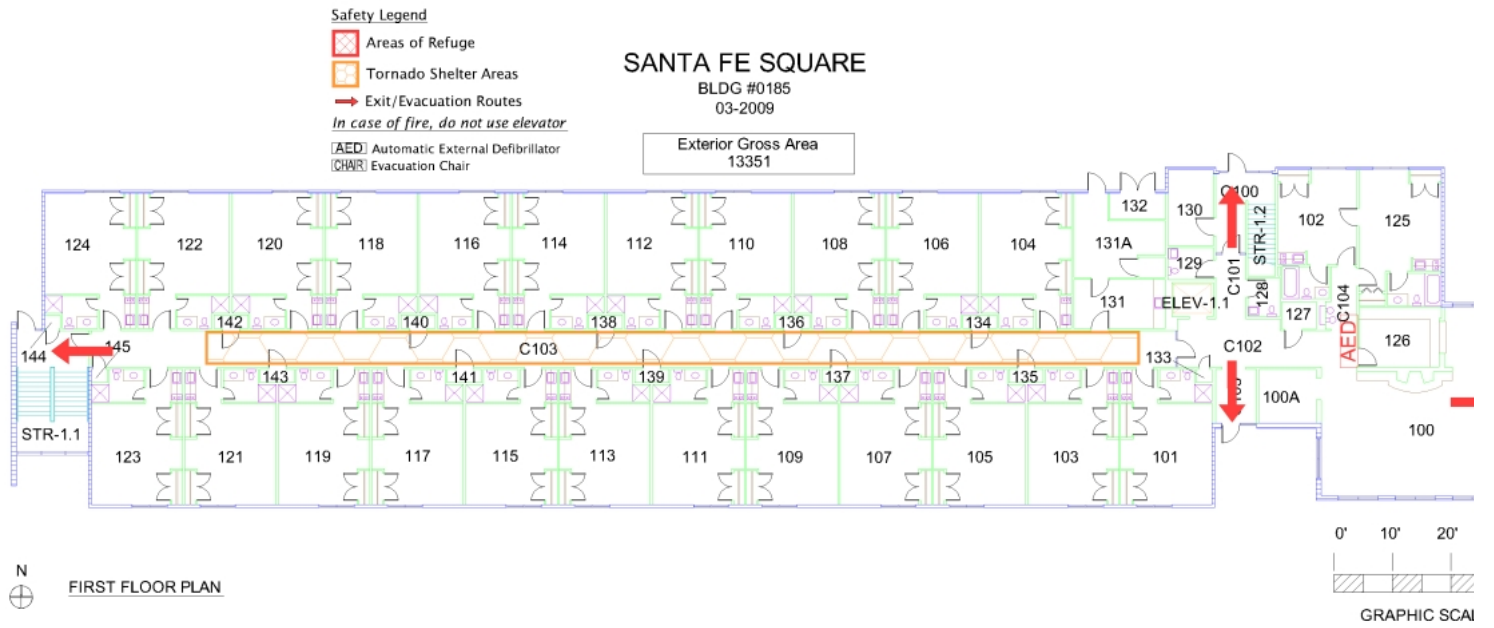
In the event of a bomb threat or fire in the building, all building occupants should immediately evacuate the building using the nearest exit. Once outside, proceed to the designated assembly area. If unable to safely move to the designated assembly area, contact your RA to let them know you are safe and inform them of your whereabouts.

Persons with mobility impairments who are unable to safely exit the building should move to a designated area of refuge and await assistance from emergency responders.

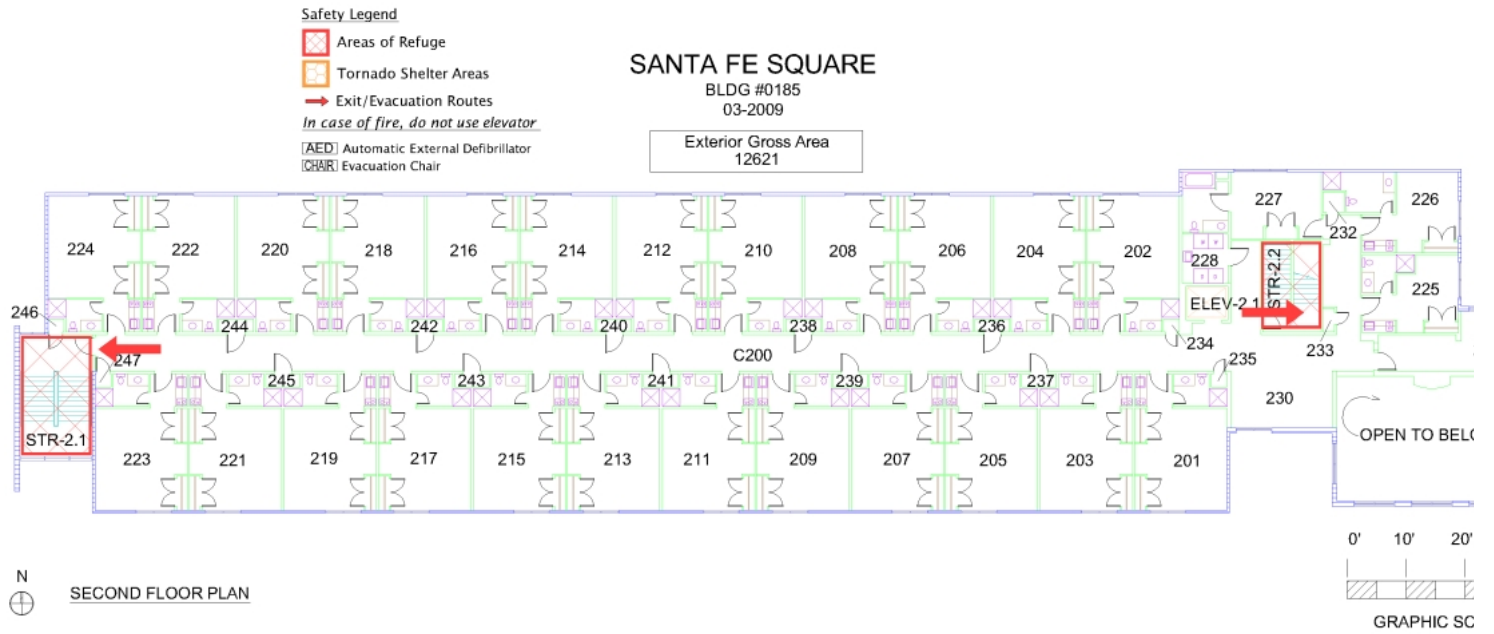
Residents should congregate in parking lot 20 south of Traditions Hall.

Building Evacuation Maps

[Print Full Size Map](#)



[Print Full Size Map](#)



[Print Full Size Map](#)

