

# Emergency Evacuation Procedures

## Rawlins Hall

### Severe Weather

In the event of severe weather, all building occupants should immediately seek shelter in the designated shelter-in-place area in the building. If unable to safely move to the designated shelter-in-place area, seek shelter in a windowless interior room or hallway on the lowest floor of the building.

**All building occupants residing on the first floor should take shelter inside their bathrooms, residents living on upper floors should take shelter in the 1<sup>st</sup> floor hallways away from any windows.**

---

### Bomb Threat/Fire

In the event of a bomb threat or fire in the building, all building occupants should immediately evacuate the building using the nearest exit. Once outside, proceed to the designated assembly area. If unable to safely move to the designated assembly area, contact one or more members of your department or unit to let them know you are safe and inform them of your whereabouts.

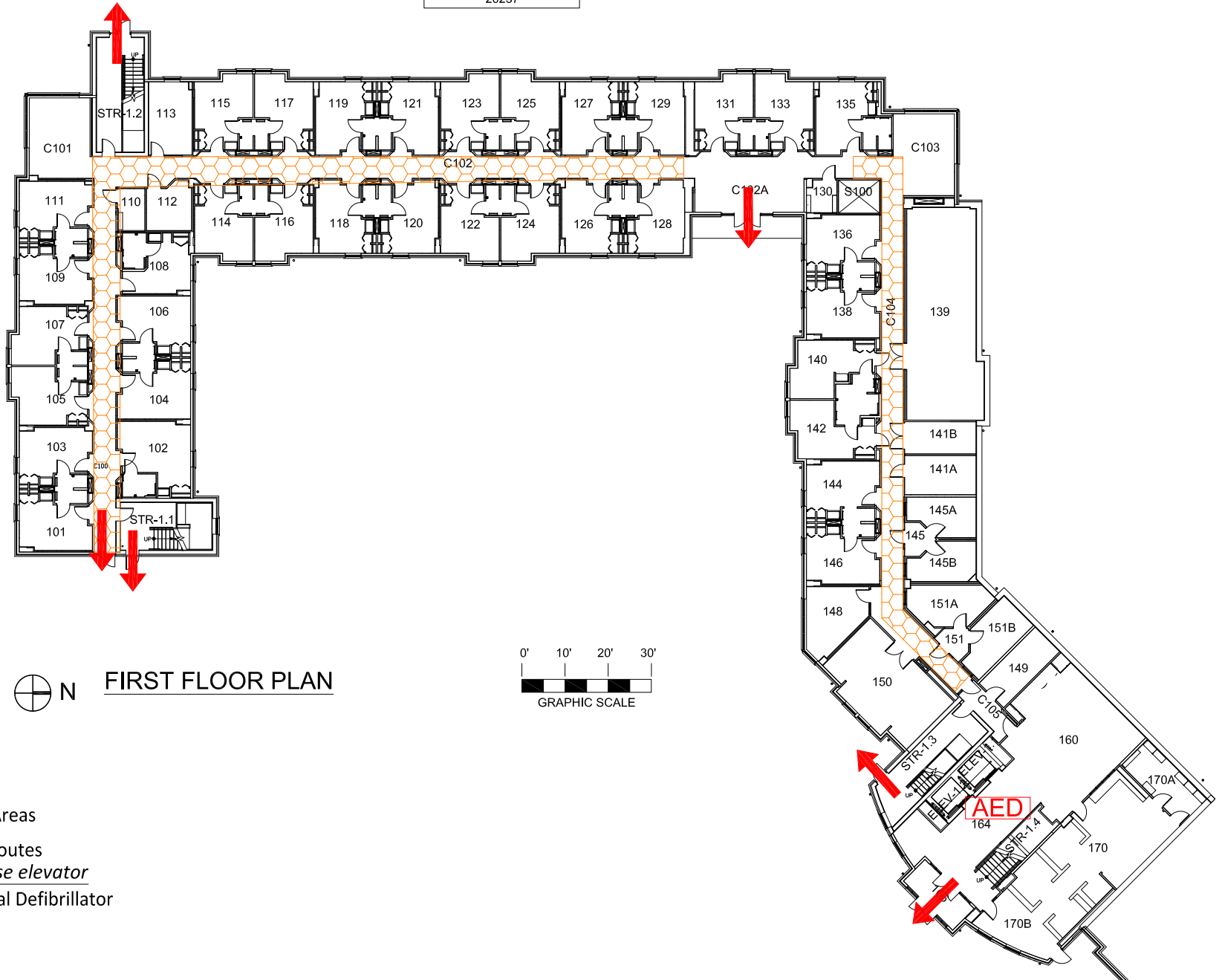
**All building occupants should immediately evacuate the building and proceed to Parking Lot 27 across from Clark Hall.**

# RAWLINS HALL

BLDG # 0173

08-2015

Exterior Gross Area  
20237



⊕ N FIRST FLOOR PLAN



### Safety Legend

Areas of Refuge

Tornado Shelter Areas

Exit/Evacuation Routes

*In case of fire, do not use elevator*

Automatic External Defibrillator

Evacuation Chair

# RAWLINS HALL

BLDG # 0173  
08-2015

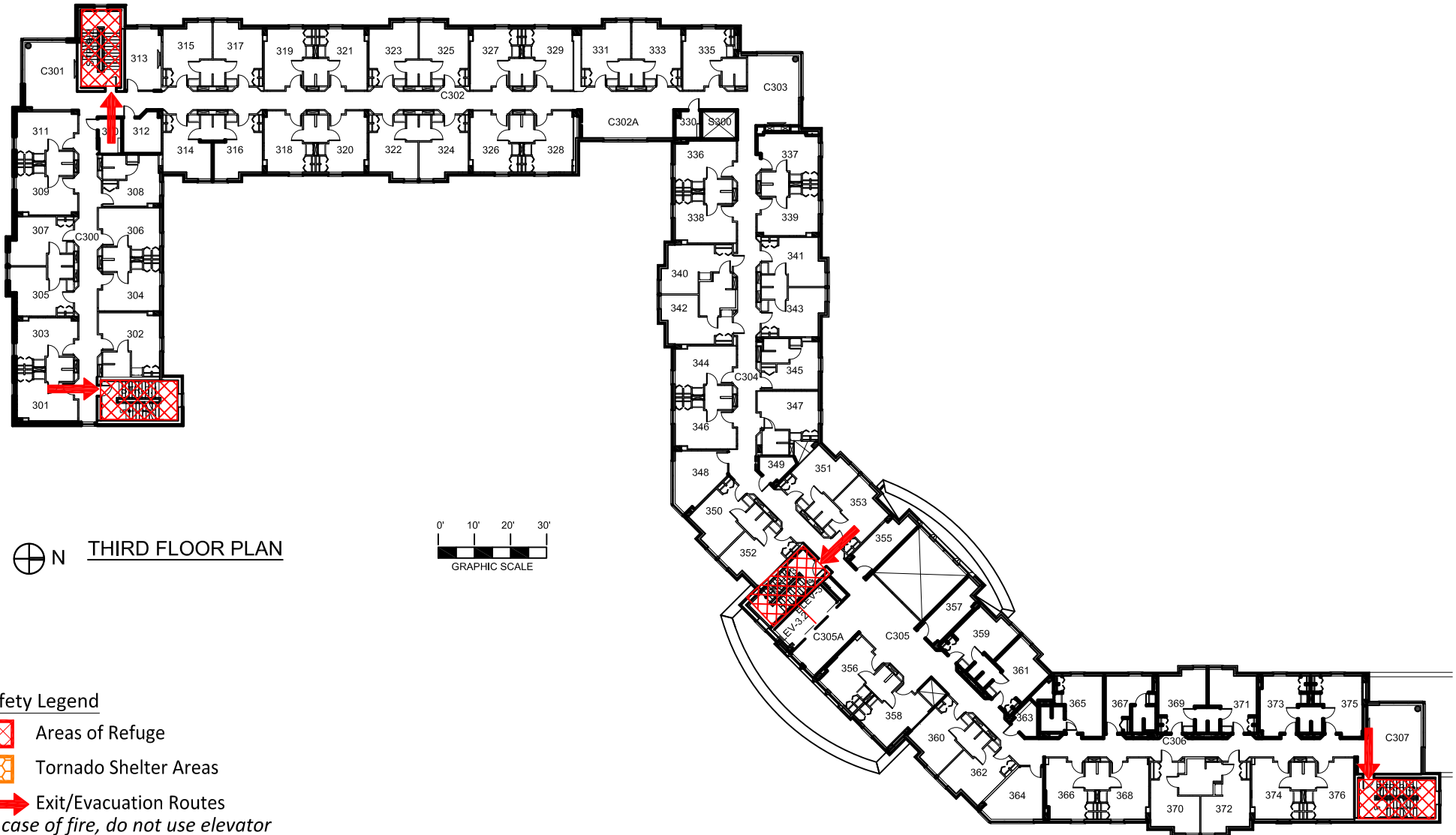
Exterior Gross Area  
25915



# RAWLINS HALL

BLDG # 0173  
07-2015


Exterior Gross Area  
25010





⊕ N THIRD FLOOR PLAN

0' 10' 20' 30'  
GRAPHIC SCALE


### Safety Legend


 Areas of Refuge

 Tornado Shelter Areas

 Exit/Evacuation Routes

*In case of fire, do not use elevator*

 Automatic External Defibrillator

 Evacuation Chair

# RAWLINS HALL

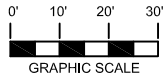
BLDG # 0173

08-2015


Exterior Gross Area  
25380





⊕ N FOURTH FLOOR PLAN




## Safety Legend


 Areas of Refuge

 Tornado Shelter Areas

 Exit/Evacuation Routes

*In case of fire, do not use elevator*

 Automatic External Defibrillator

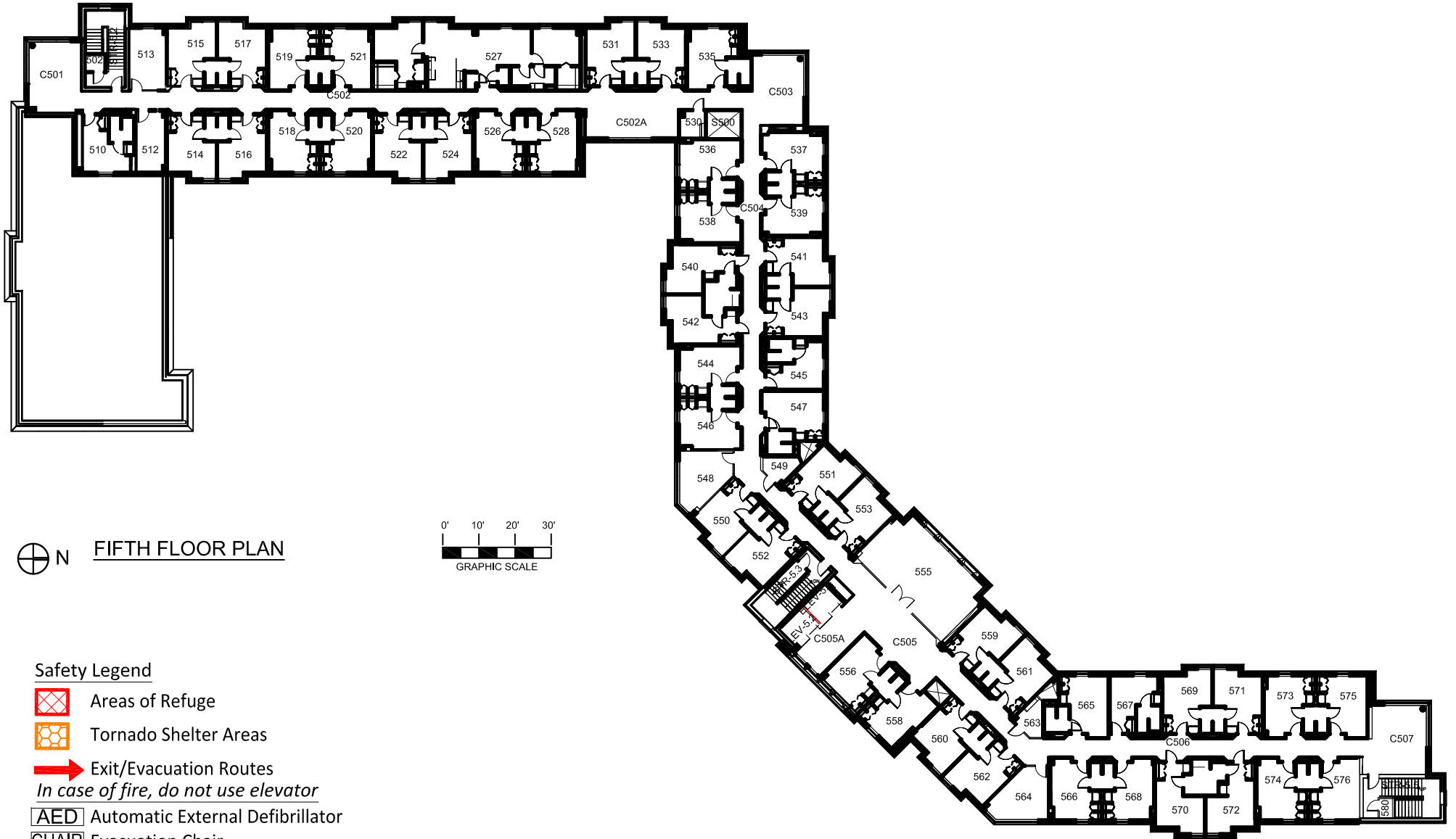
 Evacuation Chair

# RAWLINS HALL

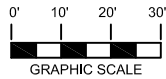
BLDG # 0173

08-2015

Exterior Gross Area  
22138



⊕ N FIFTH FLOOR PLAN



### Safety Legend

Areas of Refuge

Tornado Shelter Areas

Exit/Evacuation Routes

*In case of fire, do not use elevator*

AED Automatic External Defibrillator

CHAIR Evacuation Chair