

Emergency Evacuation Procedures

Kappa Delta (House G)

Page Navigation

- [Severe Weather](#)
 - [Bomb Threat/Fire](#)
 - [Building Evacuation Maps](#)
-

Severe Weather

In the event of severe weather, all building occupants should immediately seek shelter in the designated shelter-in-place area in the building. If unable to safely move to the designated shelter-in-place area, seek shelter in a windowless interior room or hallway on the lowest floor of the building.

All building occupants should seek shelter on the first floor in the center hallway on the east and west ends of the building.

Bomb Threat/Fire

In the event of a bomb threat or fire in the building, all building occupants should immediately evacuate the building using the nearest exit. Once outside, proceed to the designated assembly area. If unable to safely move to the designated assembly area, contact your RA to let them know you are safe and inform them of your whereabouts.

Persons with mobility impairments who are unable to safely exit the building should move to a designated area of refuge and await assistance from emergency responders.

All building occupants should proceed to the west end of parking lot 39 west of the building

Building Evacuation Maps

[Print Full Size Map](#)


SORORITY HOUSE G


BUILDING # 0356


09-2009

Exterior Gross Area
4285


Safety Legend


 Areas of Refuge

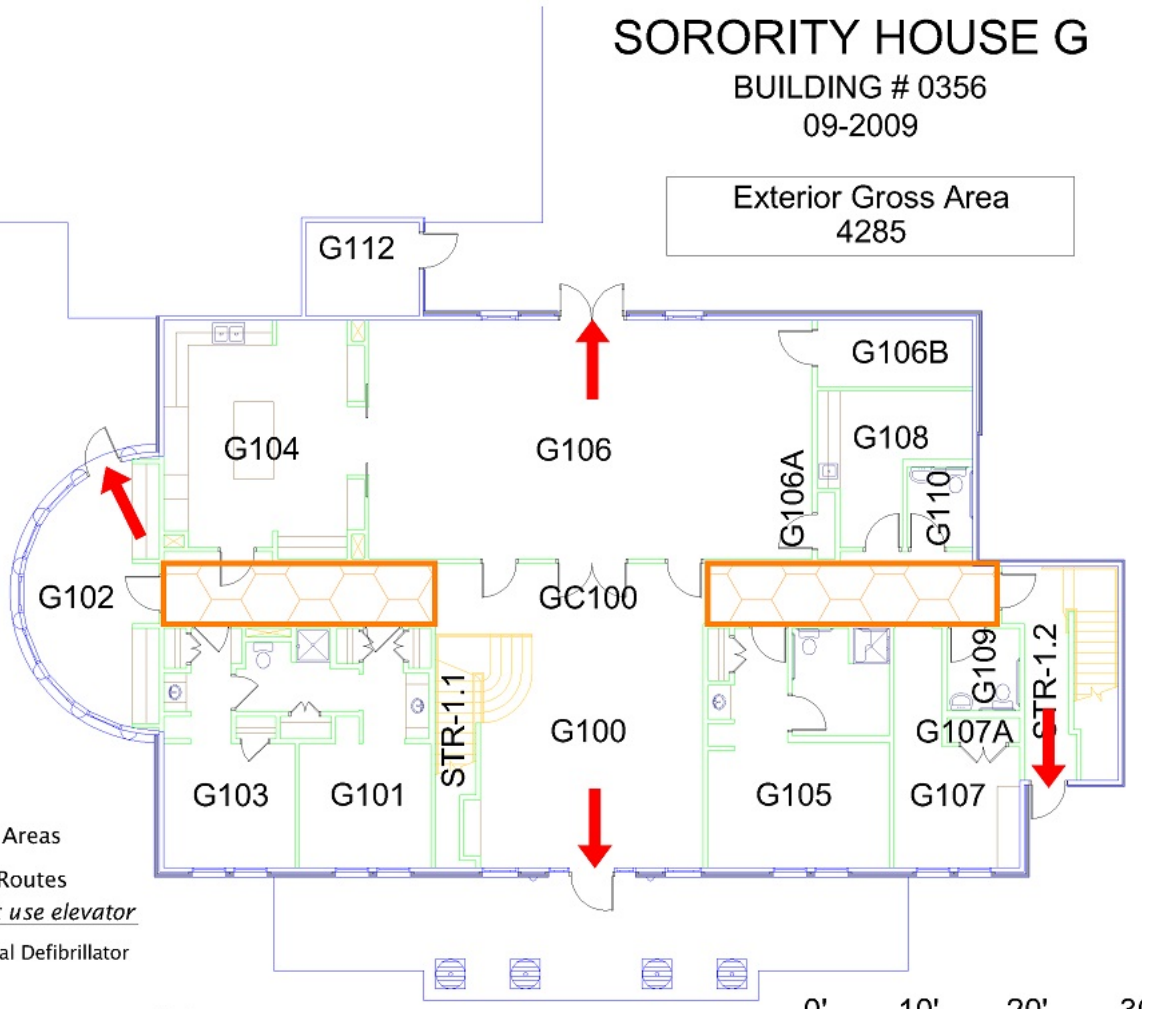
 Tornado Shelter Areas

 Exit/Evacuation Routes

In case of fire, do not use elevator

 AED Automatic External Defibrillator

 CHAIR Evacuation Chair



N

FIRST FLOOR PLAN

0' 10' 20' 30'

GRAPHIC SCALE

[Print Full Size Map](#)


SORORITY HOUSE G


BUILDING # 0356


09-2009

Exterior Gross Area
3931

Safety Legend

 Areas of Refuge

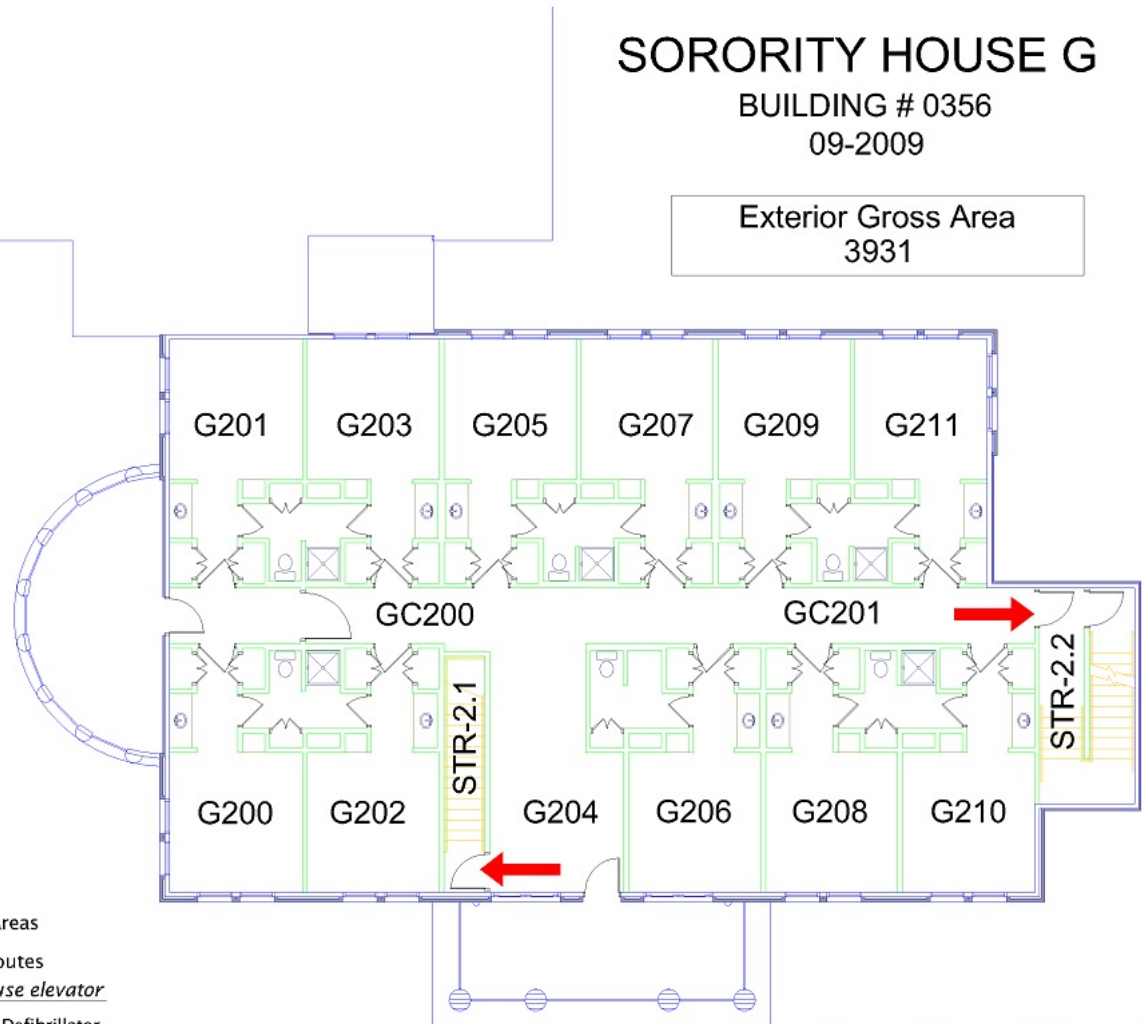
 Tornado Shelter Areas

 Exit/Evacuation Routes

In case of fire, do not use elevator

[AED] Automatic External Defibrillator

[CHAIR] Evacuation Chair



N

SECOND FLOOR PLAN

0' 10' 20' 30'

GRAPHIC SCALE