

Emergency Evacuation Procedures

Willis Library

Page Navigation

- [Severe Weather](#)
 - [Bomb Threat/Fire](#)
 - [Building Evacuation Maps](#)
-

Severe Weather

In the event of severe weather, all building occupants should immediately seek shelter in the designated shelter-in-place area in the building. If unable to safely move to the designated shelter-in-place area, seek shelter in a windowless interior room or hallway on the lowest floor of the building.

An announcement is made and all staff and others shall proceed to the lower level of the library.

Bomb Threat/Fire

In the event of a bomb threat or fire in the building, all building occupants should immediately evacuate the building using the nearest exit. Once outside, proceed to the designated assembly area. If unable to safely move to the designated assembly area, contact one or more members of your department or unit to let them know you are safe and inform them of your whereabouts.

Persons with mobility impairments who are unable to safely exit the building should move to a designated area of refuge and await assistance from emergency responders.

All exits are clearly marked and all staff and others will immediately evacuate the building and proceed to the north end of the Library Mall.

Building Evacuation Maps

[Print Full Size Map](#)


WILLIS LIBRARY BUILDING


BUILDING #0149


07-2009

Exterior Gross Area
34856


Safety Legend

 Areas of Refuge

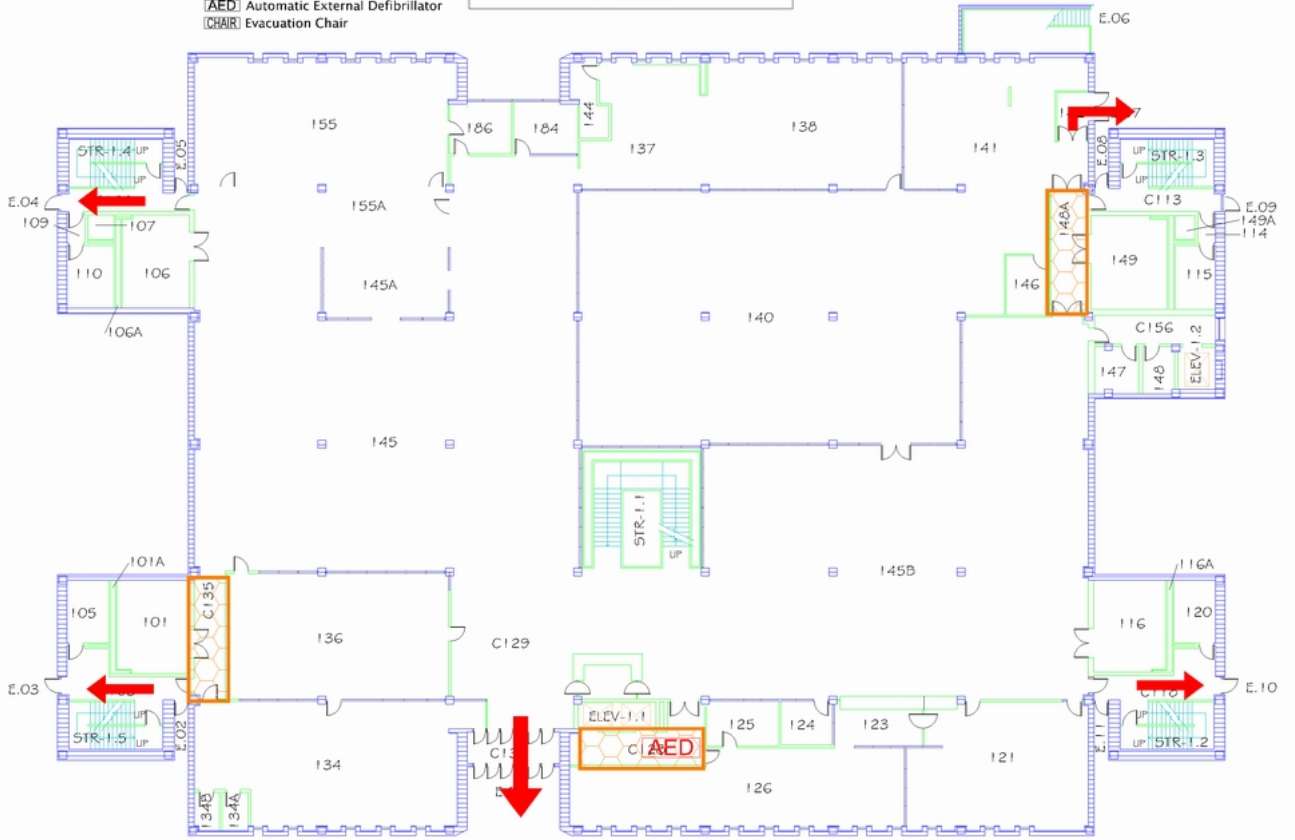
 Tornado Shelter Areas

 Exit/Evacuation Routes

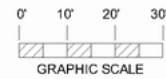
In case of fire, do not use elevator

 AED: Automatic External Defibrillator

 CHAIR: Evacuation Chair



FIRST FLOOR PLAN








[Print Full Size Map](#)

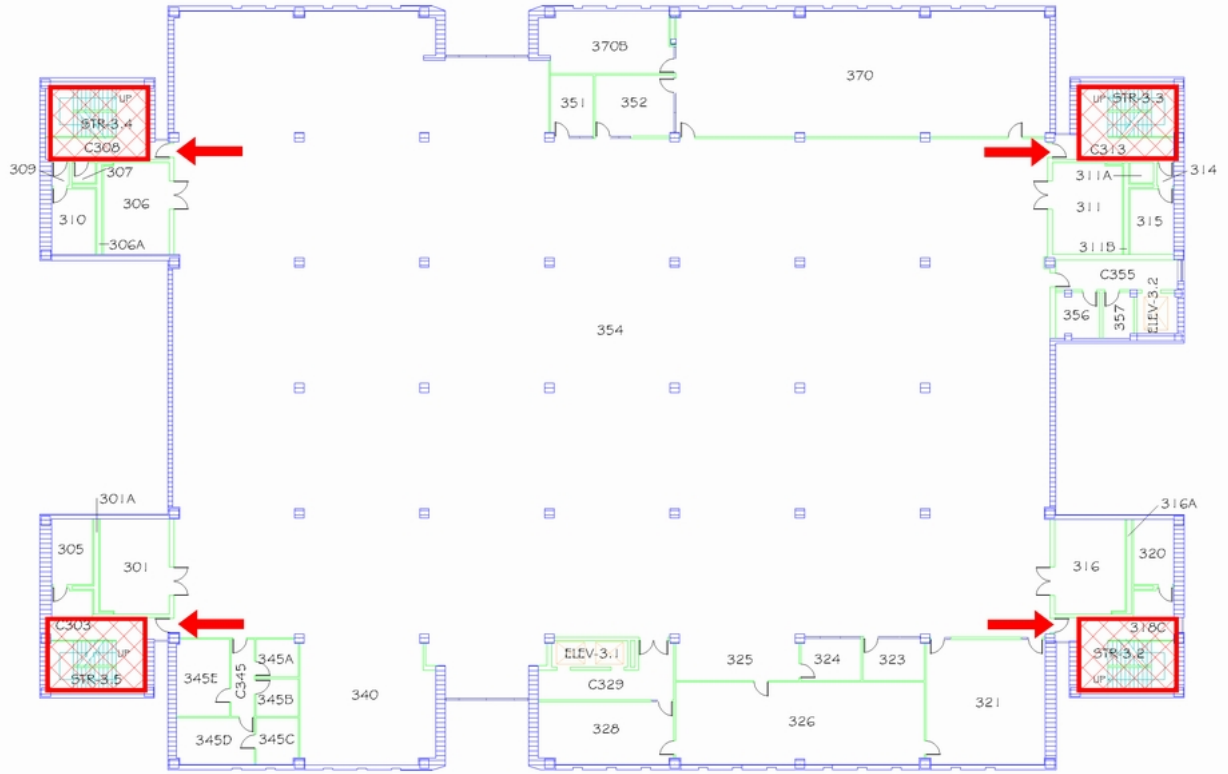
WILLIS LIBRARY BUILDING

BUILDING #0149
12-2008

Safety Legend

-  Areas of Refuge
-  Tornado Shelter Areas
-  Exit/Evacuation Routes
- In case of fire, do not use elevator*
-  AED Automatic External Defibrillator
-  ECH Evacuation Chair

Exterior Gross Area
34849



THIRD FLOOR PLAN



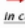




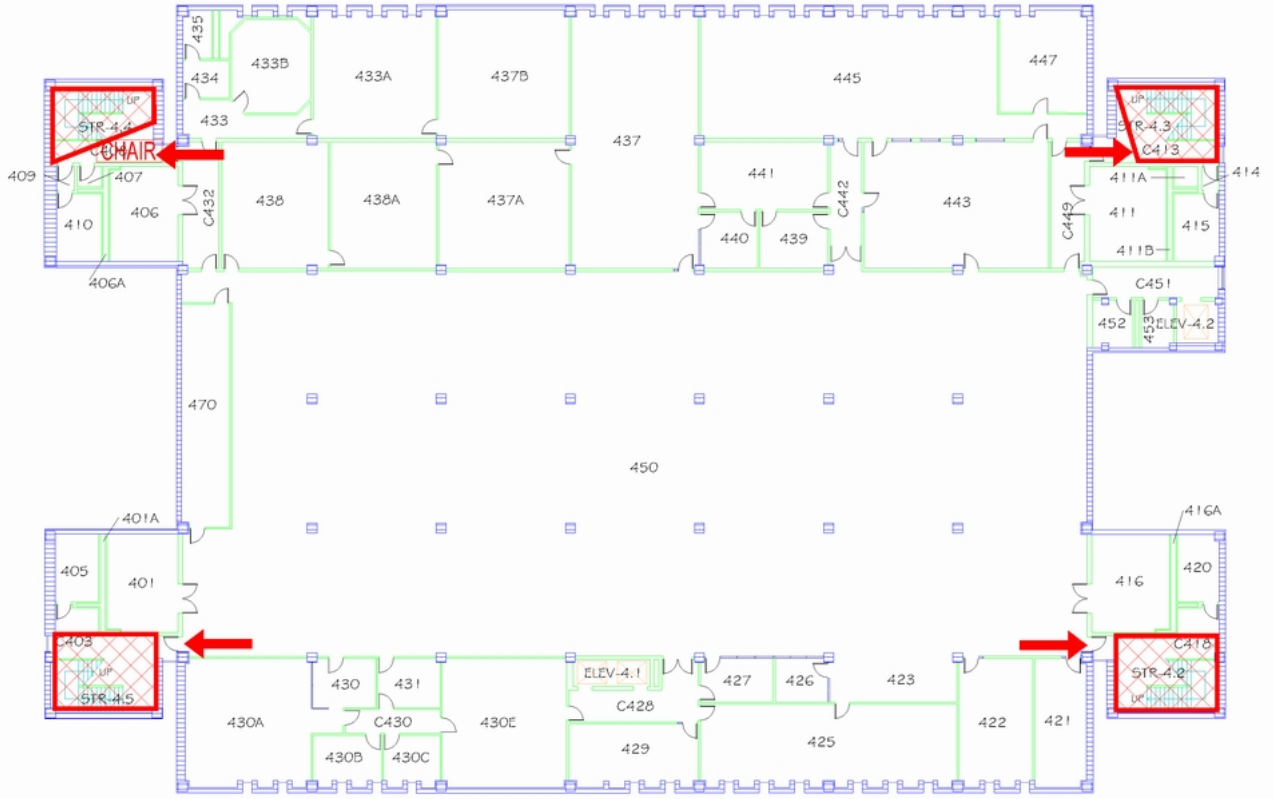
[Print Full Size Map](#)

WILLIS LIBRARY BUILDING

BUILDING #0149
10-2007

Exterior Gross Area
35206

- Safety Legend**
-  Areas of Refuge
 -  Tornado Shelter Areas
 -  Exit/Evacuation Routes
 - In case of fire, do not use elevator*
 -  AED Automatic External Defibrillator
 -  CHAIR Evacuation Chair



FOURTH FLOOR PLAN



[Print Full Size Map](#)


WILLIS LIBRARY BUILDING

BUILDING #0149


10-2007

Exterior Gross Area 35762


Safety Legend


 Areas of Refuge

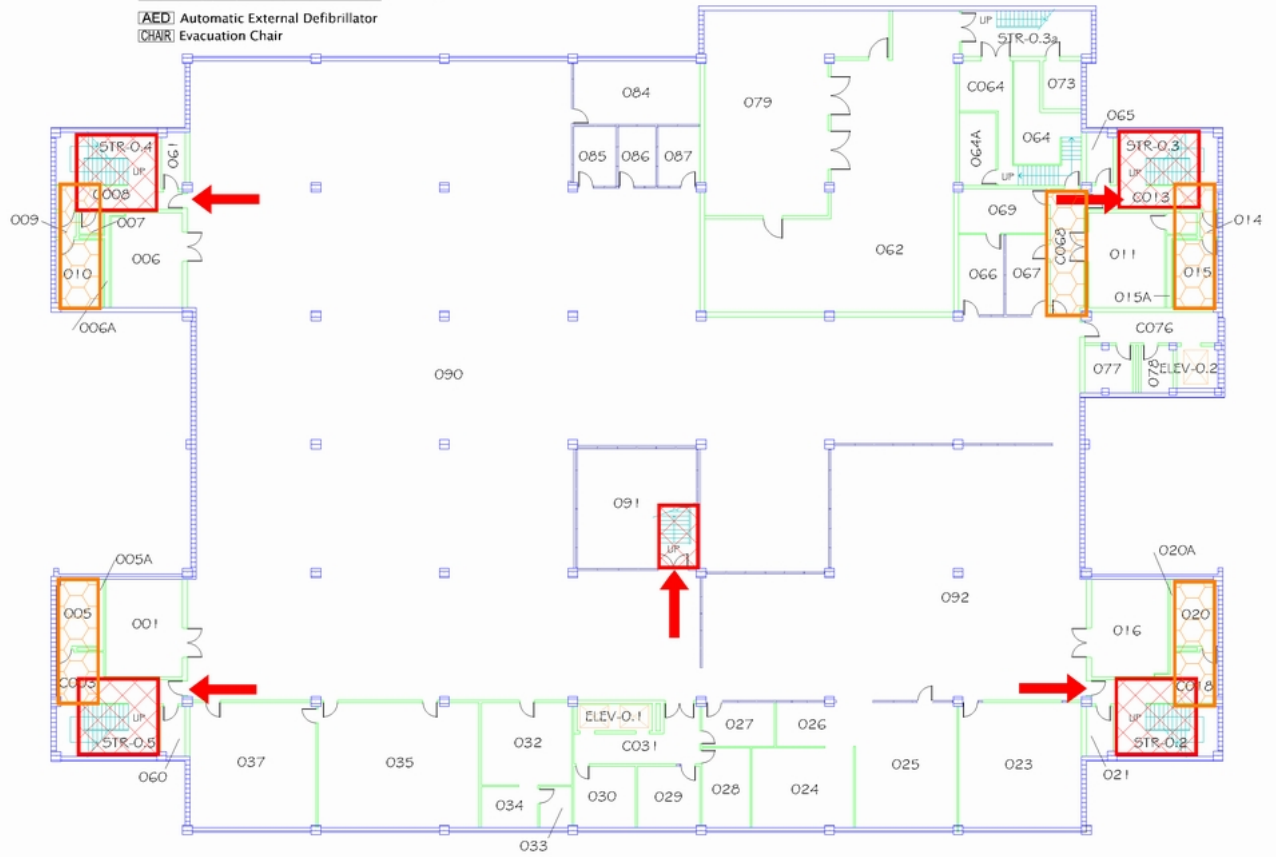
 Tornado Shelter Areas

 Exit/Evacuation Routes

In case of fire, do not use elevator

 AED Automatic External Defibrillator

 CHAIR Evacuation Chair



LOWER LEVEL FLOOR PLAN

