

Emergency Evacuation Procedures

Track and Field

Page Navigation

- [Severe Weather](#)
 - [Bomb Threat/Fire](#)
 - [Building Evacuation Maps](#)
-

Severe Weather

In the event of severe weather, all building occupants should immediately seek shelter in the designated shelter-in-place area in the building. If unable to safely move to the designated shelter-in-place area, seek shelter in a windowless interior room or hallway on the lowest floor of the building.

During severe weather, all building occupants will take shelter in the main shower room in the middle of the building. In situations when building occupancy exceeds 75, all occupants should seek shelter across the street in the UNT Coliseum.

Bomb Threat/Fire

In the event of a bomb threat or fire in the building, all building occupants should immediately evacuate the building using the nearest exit. Once outside, proceed to the designated assembly area. If unable to safely move to the designated assembly area, contact one or more members of your department or unit to let them know you are safe and inform them of your whereabouts.

Persons with mobility impairments who are unable to safely exit the building should move to a designated area of refuge and await assistance from emergency responders.

All building occupants will proceed to the tennis courts next to parking lot 20 east of Fouts Field.




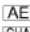

Building Evacuation Maps

[Print Full Size Map](#)

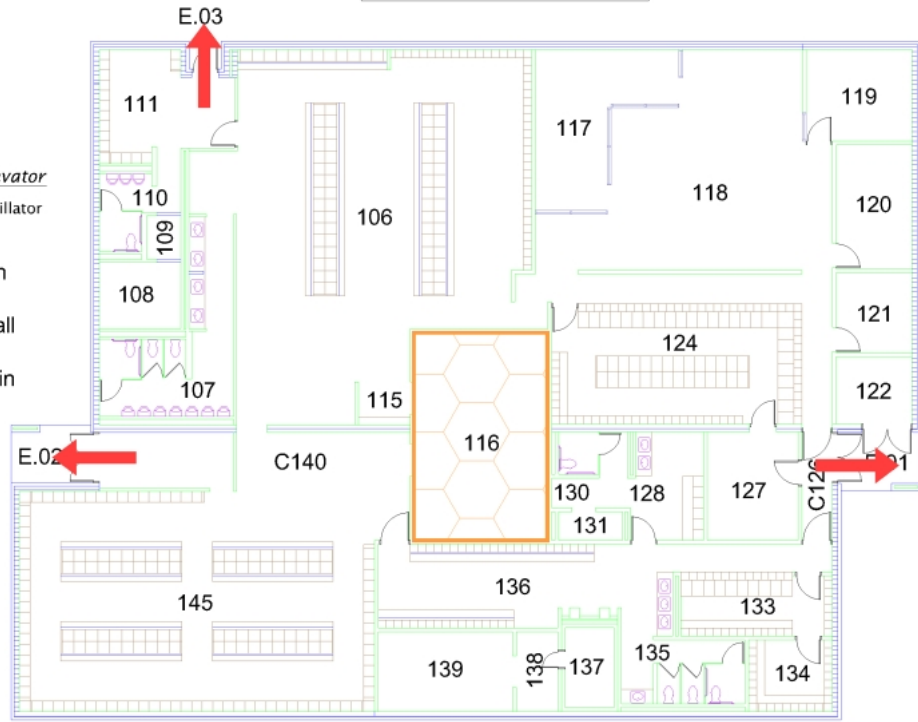
TRACK & FIELD BUILDING BLDG #0308 02-2009

Exterior Gross Area
8763

Safety Legend

-  Areas of Refuge
-  Tornado Shelter Areas
-  Exit/Evacuation Routes
- In case of fire, do not use elevator*
-  AED Automatic External Defibrillator
-  CHAIR Evacuation Chair

During severe weather, in situations when building occupancy exceeds 75, all occupants should seek shelter across the street in the UNT Coliseum.



FIRST FLOOR PLAN

