

Emergency Evacuation Procedures

Physics Building

Page Navigation

- [Severe Weather](#)
 - [Bomb Threat/Fire](#)
 - [Building Evacuation Maps](#)
-

Severe Weather

In the event of severe weather, all building occupants should immediately seek shelter in the designated shelter-in-place area in the building. If unable to safely move to the designated shelter-in-place area, seek shelter in a windowless interior room or hallway on the lowest floor of the building.

All staff and others shall proceed to the basement.

Bomb Threat/Fire

In the event of a bomb threat or fire in the building, all building occupants should immediately evacuate the building using the nearest exit. Once outside, proceed to the designated assembly area. If unable to safely move to the designated assembly area, contact one or more members of your department or unit to let them know you are safe and inform them of your whereabouts.


Persons with mobility impairments who are unable to safely exit the building should move to a designated area of refuge and await assistance from emergency responders.


All exits are clearly marked and all staff and others will immediately evacuate the building and proceed to the area east of the General Academic Building.


Building Evacuation Maps

[Print Full Size Map](#)

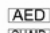
Safety Legend


 Areas of Refuge

 Tornado Shelter Areas

 Exit/Evacuation Routes

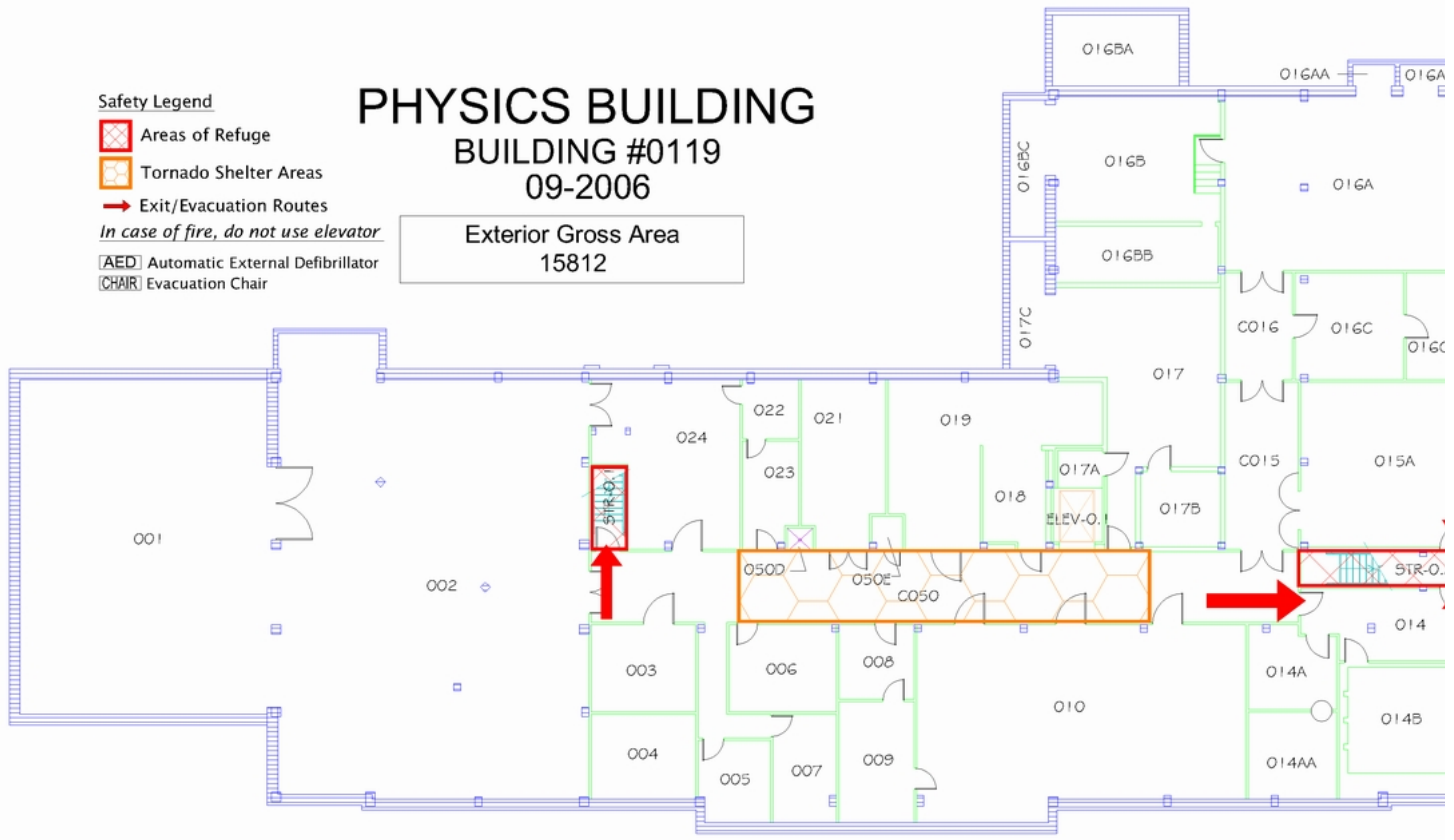
In case of fire, do not use elevator

 Automatic External Defibrillator

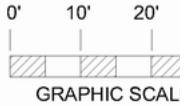
 Evacuation Chair

PHYSICS BUILDING BUILDING #0119 09-2006

Exterior Gross Area
15812






BASEMENT FLOOR PLAN




[Print Full Size Map](#)

Safety Legend

-  Areas of Refuge
-  Tornado Shelter Areas
-  Exit/Evacuation Routes

In case of fire, do not use elevator

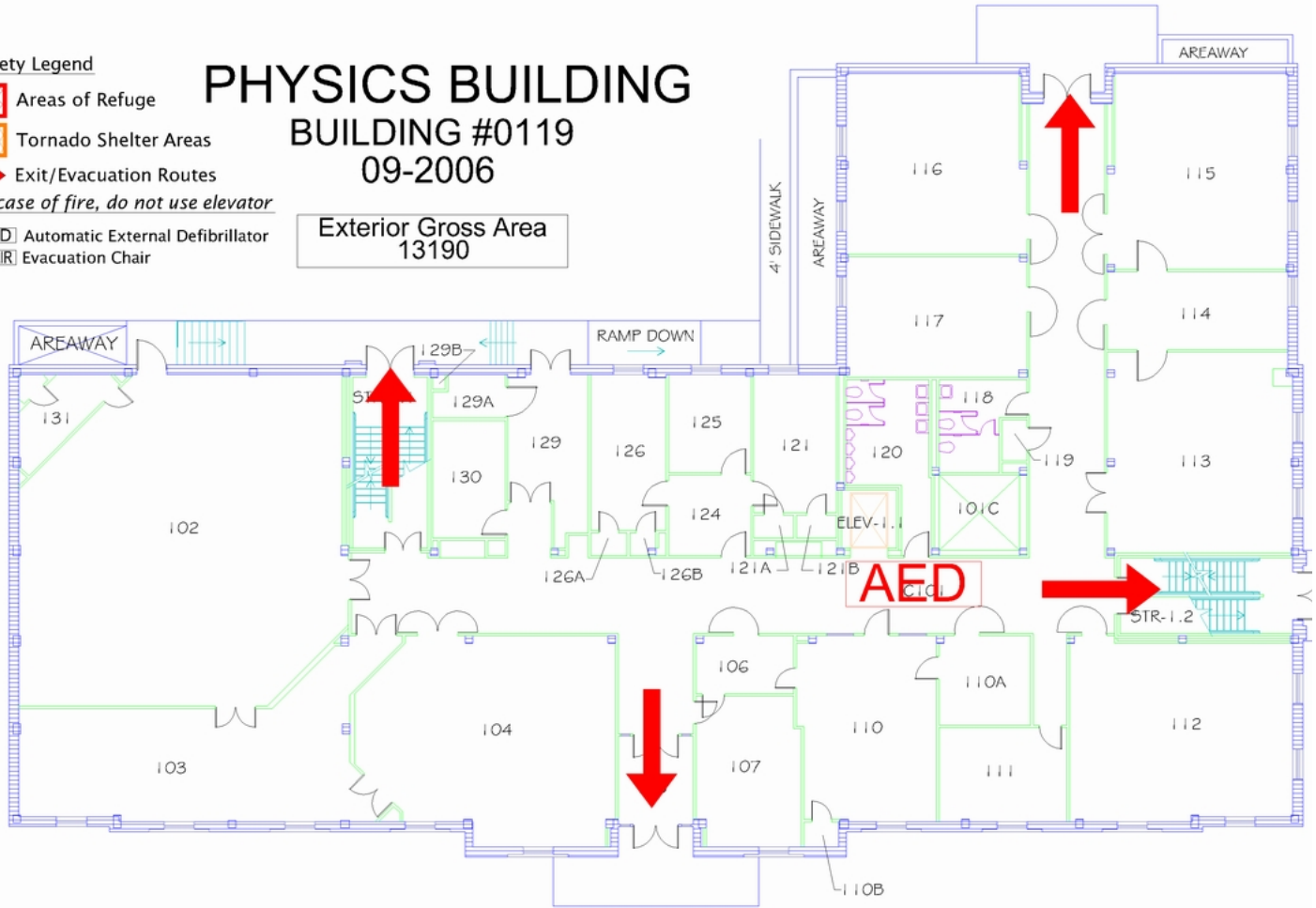
-  AED Automatic External Defibrillator
-  CHAIR Evacuation Chair

PHYSICS BUILDING

BUILDING #0119

09-2006






Exterior Gross Area
13190



FIRST FLOOR PLAN

[Print Full Size Map](#)

Safety Legend

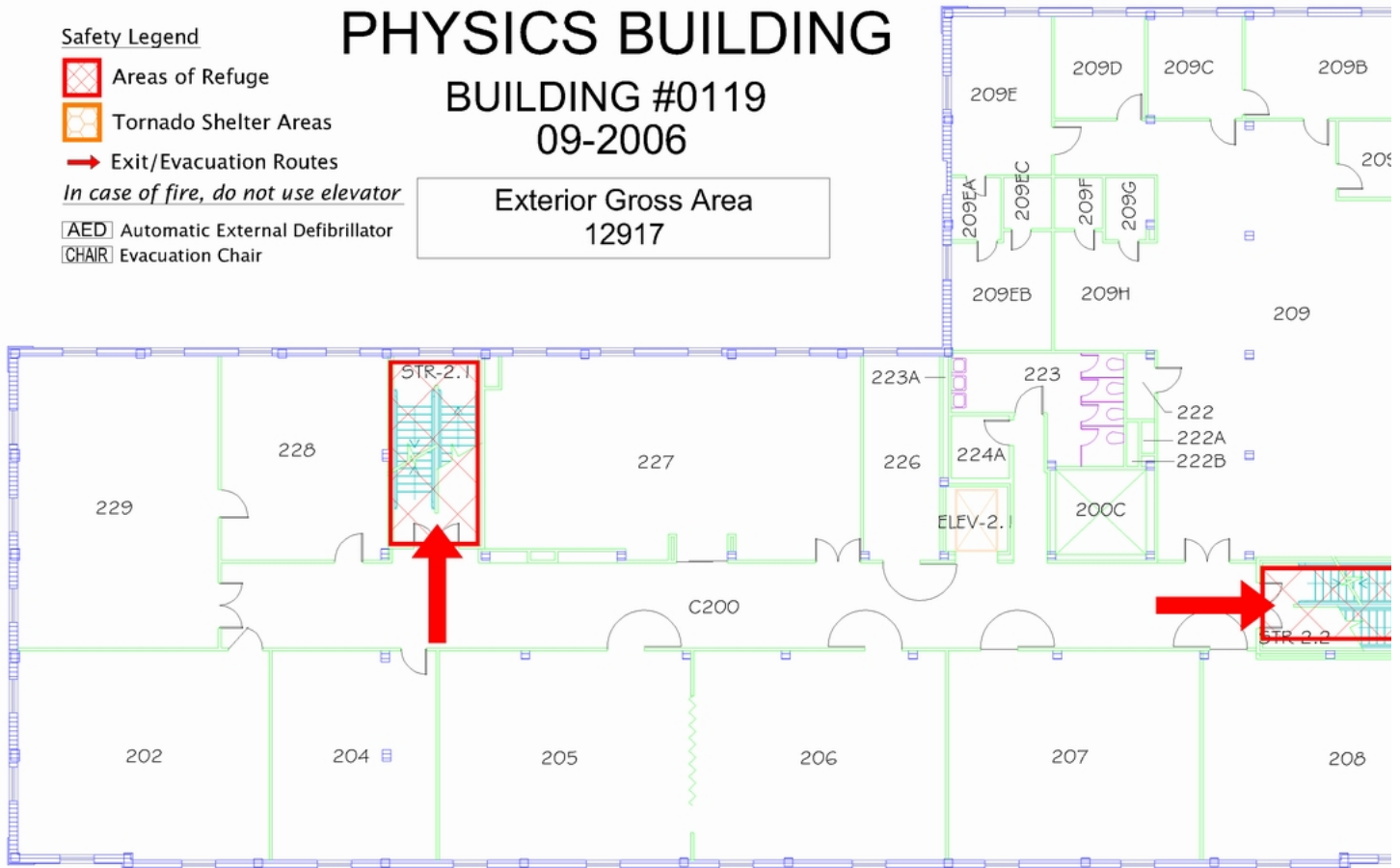
-  Areas of Refuge
-  Tornado Shelter Areas
-  Exit/Evacuation Routes
- In case of fire, do not use elevator*
-  AED Automatic External Defibrillator
-  CHAIR Evacuation Chair

PHYSICS BUILDING

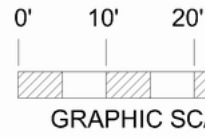
BUILDING #0119

09-2006

Exterior Gross Area
12917





SECOND FLOOR PLAN




[Print Full Size Map](#)

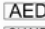
Safety Legend


 Areas of Refuge

 Tornado Shelter Areas

 Exit/Evacuation Routes

In case of fire, do not use elevator

 AED Automatic External Defibrillator

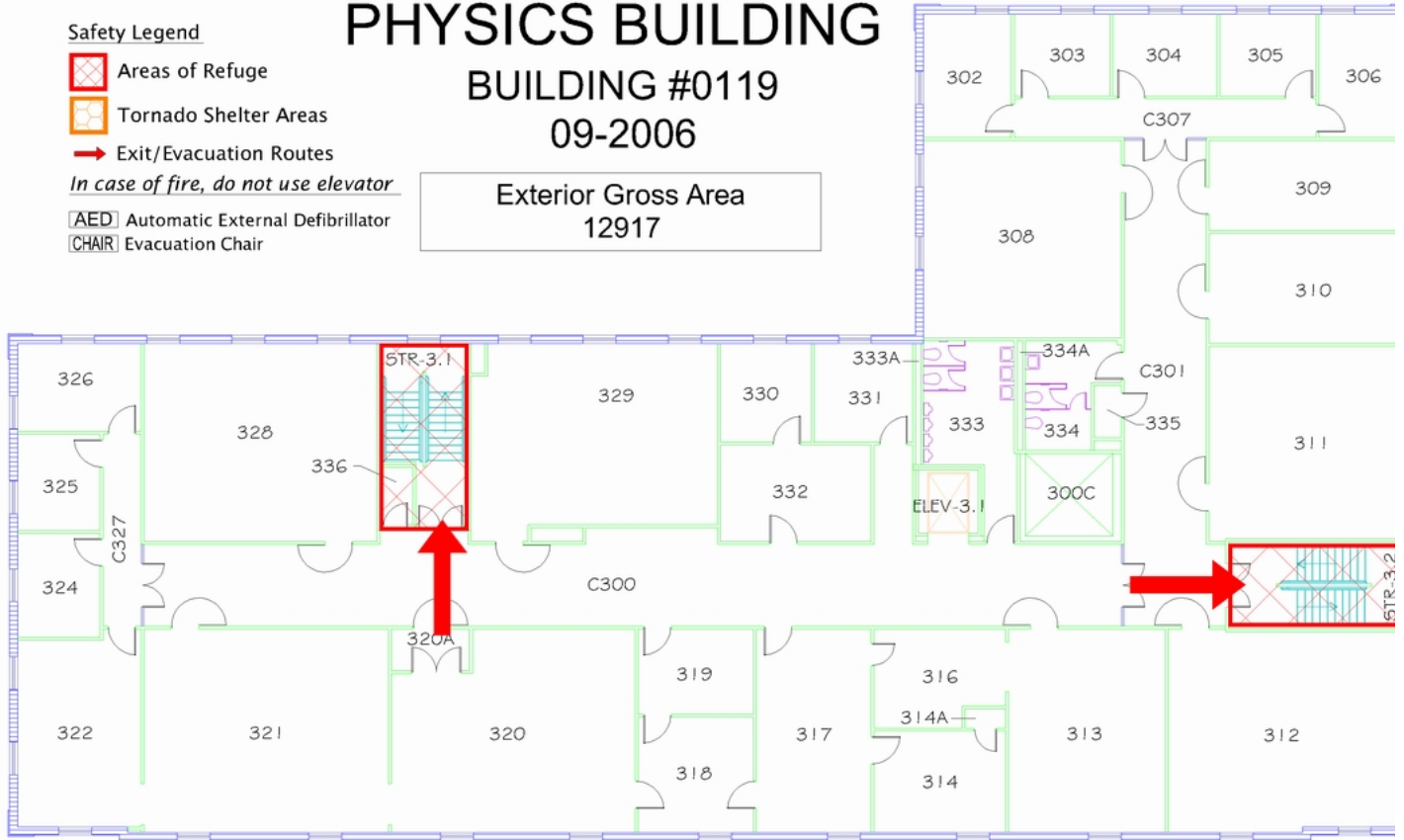
 CHAIR Evacuation Chair

PHYSICS BUILDING

BUILDING #0119

09-2006

Exterior Gross Area
12917



THIRD FLOOR PLAN