

Emergency Evacuation Procedures

Oak Street Hall

Severe Weather

In the event of severe weather, all building occupants should immediately seek shelter in the designated shelter-in-place area in the building. If unable to safely move to the designated shelter-in-place area, seek shelter in a windowless interior room or hallway on the lowest floor of the building.

All building occupants should take shelter in the main hallway on the first floor and in restrooms

Bomb Threat/Fire

In the event of a bomb threat or fire in the building, all building occupants should immediately evacuate the building using the nearest exit. Once outside, proceed to the designated assembly area. If unable to safely move to the designated assembly area, contact one or more members of your department or unit to let them know you are safe and inform them of your whereabouts.

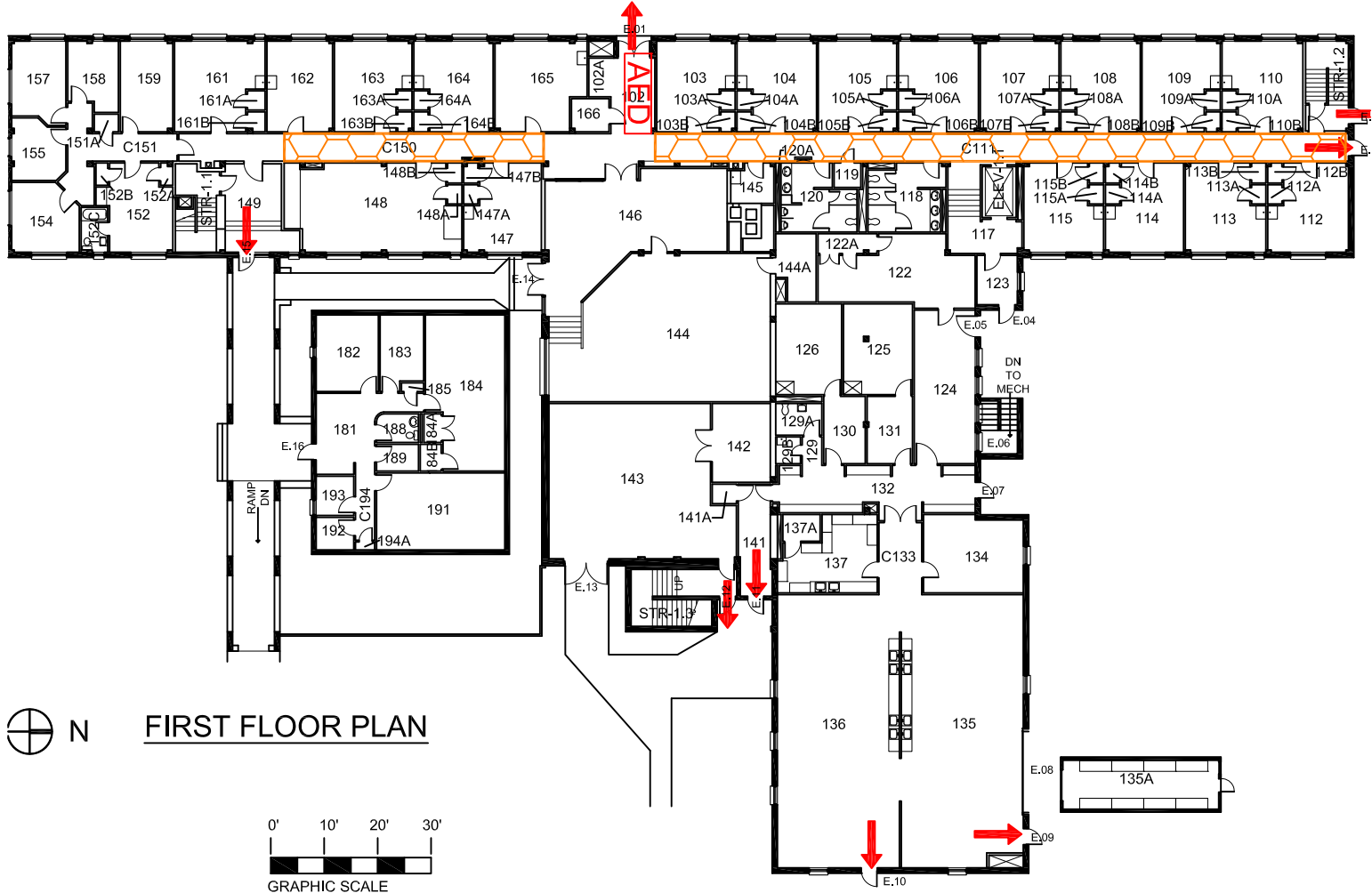
All building occupants should immediately evacuate the building and proceed to parking lot 60 east of Oak Street Hall

OAK STREET HALL

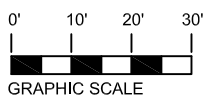
BUILDING #0132

08-2013

Exterior Gross Area
20393



FIRST FLOOR PLAN



Safety Legend

- Areas of Refuge
- Tornado Shelter Areas
- Exit/Evacuation Routes

In case of fire, do not use elevator

AED Automatic External Defibrillator

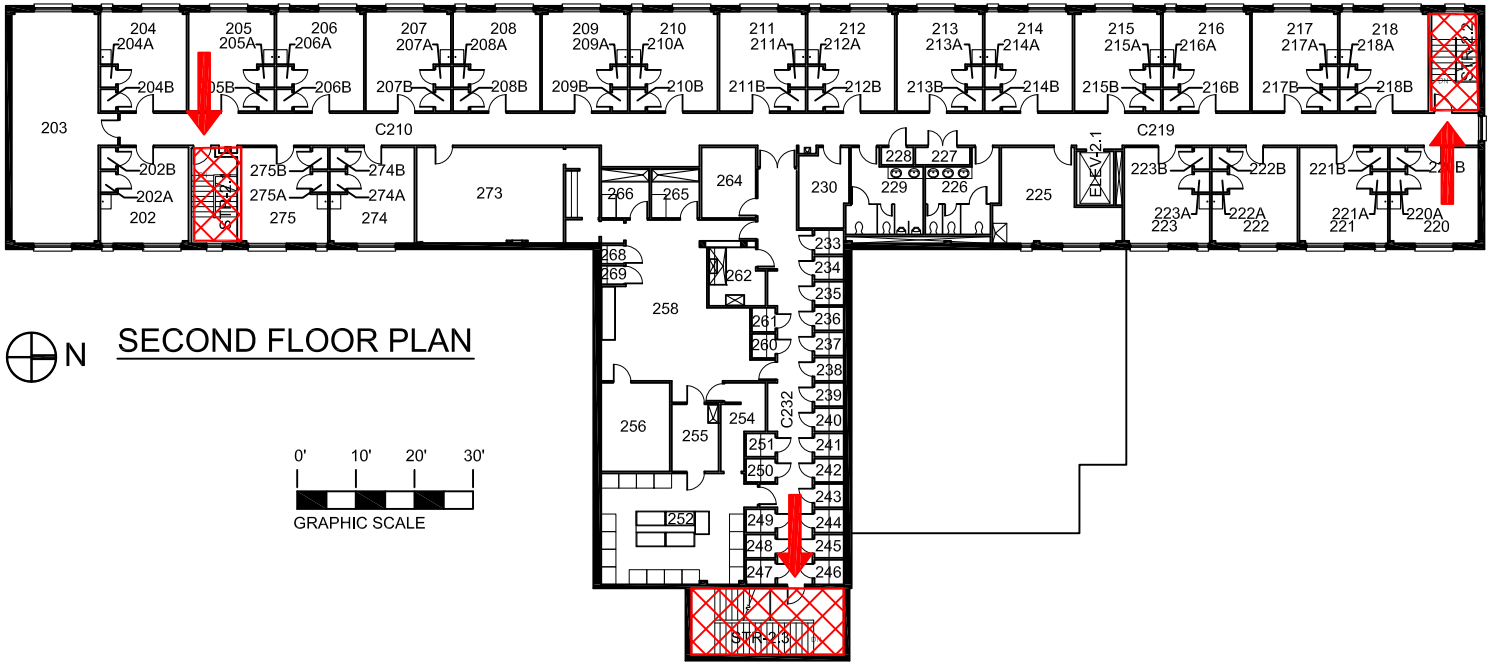
CHAIR Evacuation Chair

OAK STREET HALL

BUILDING #0132

07-2007



Exterior Gross Area
13365





 N **SECOND FLOOR PLAN**




Safety Legend

-  Areas of Refuge
-  Tornado Shelter Areas

 Exit/Evacuation Routes
In case of fire, do not use elevator

 Automatic External Defibrillator

 Evacuation Chair