

Emergency Evacuation Procedures

Murchison Performing Arts Center

Page Navigation

- [Severe Weather](#)
 - [Bomb Threat/Fire](#)
 - [Building Evacuation Maps](#)
-

Severe Weather

In the event of severe weather, all building occupants should immediately seek shelter in the designated shelter-in-place area in the building. If unable to safely move to the designated shelter-in-place area, seek shelter in a windowless interior room or hallway on the lowest floor of the building.

All staff and others will immediately proceed to the lower level of the center to rooms 009, 010, 011 and 020.

Bomb Threat/Fire

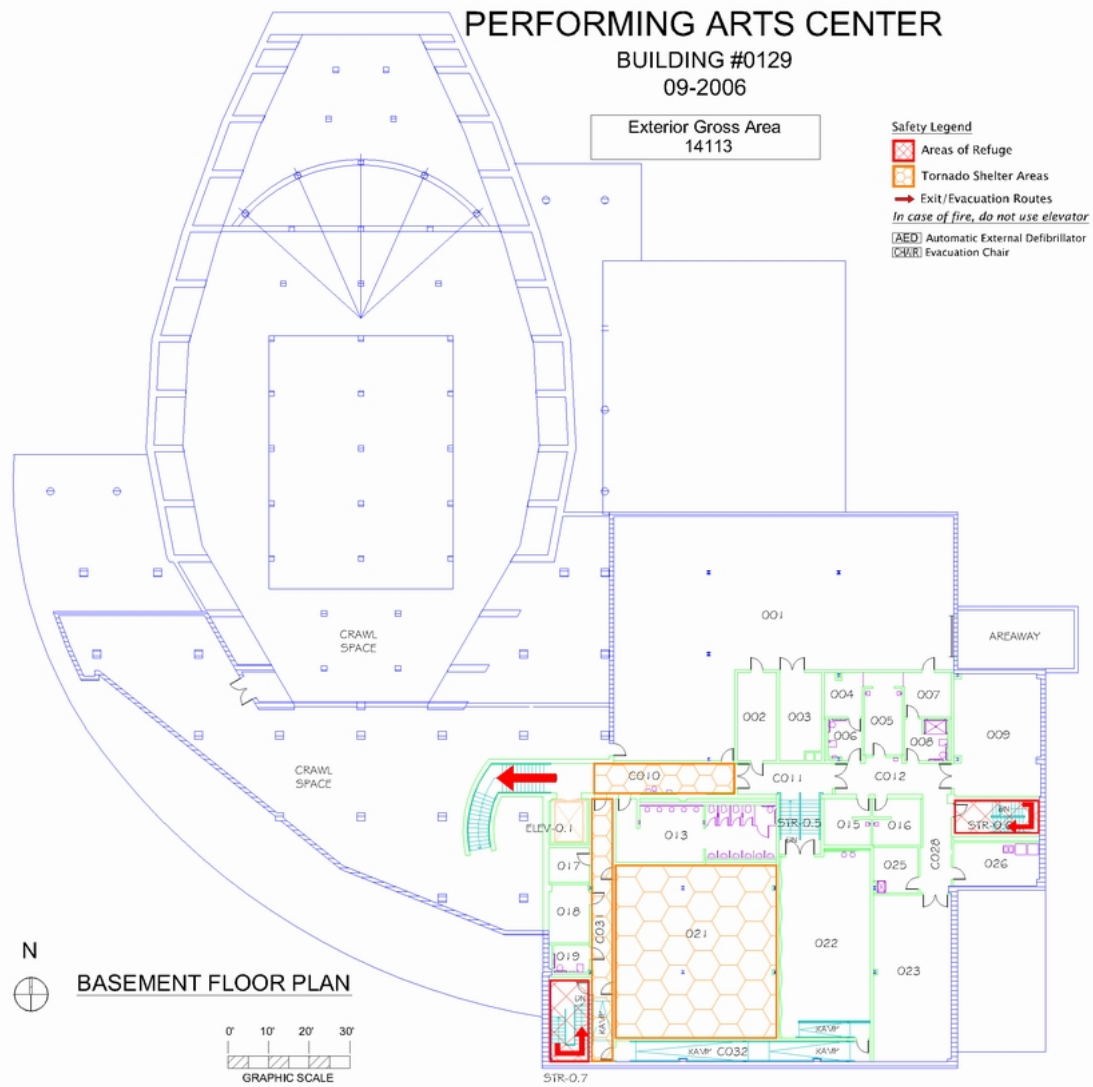
In the event of a bomb threat or fire in the building, all building occupants should immediately evacuate the building using the nearest exit. Once outside, proceed to the designated assembly area. If unable to safely move to the designated assembly area, contact one or more members of your department or unit to let them know you are safe and inform them of your whereabouts.

Persons with mobility impairments who are unable to safely exit the building should move to a designated area of refuge and await assistance from emergency responders.

All exits are clearly marked and all staff and others will immediately evacuate the building and proceed to parking lot 20 northwest of the building.

Building Evacuation Maps

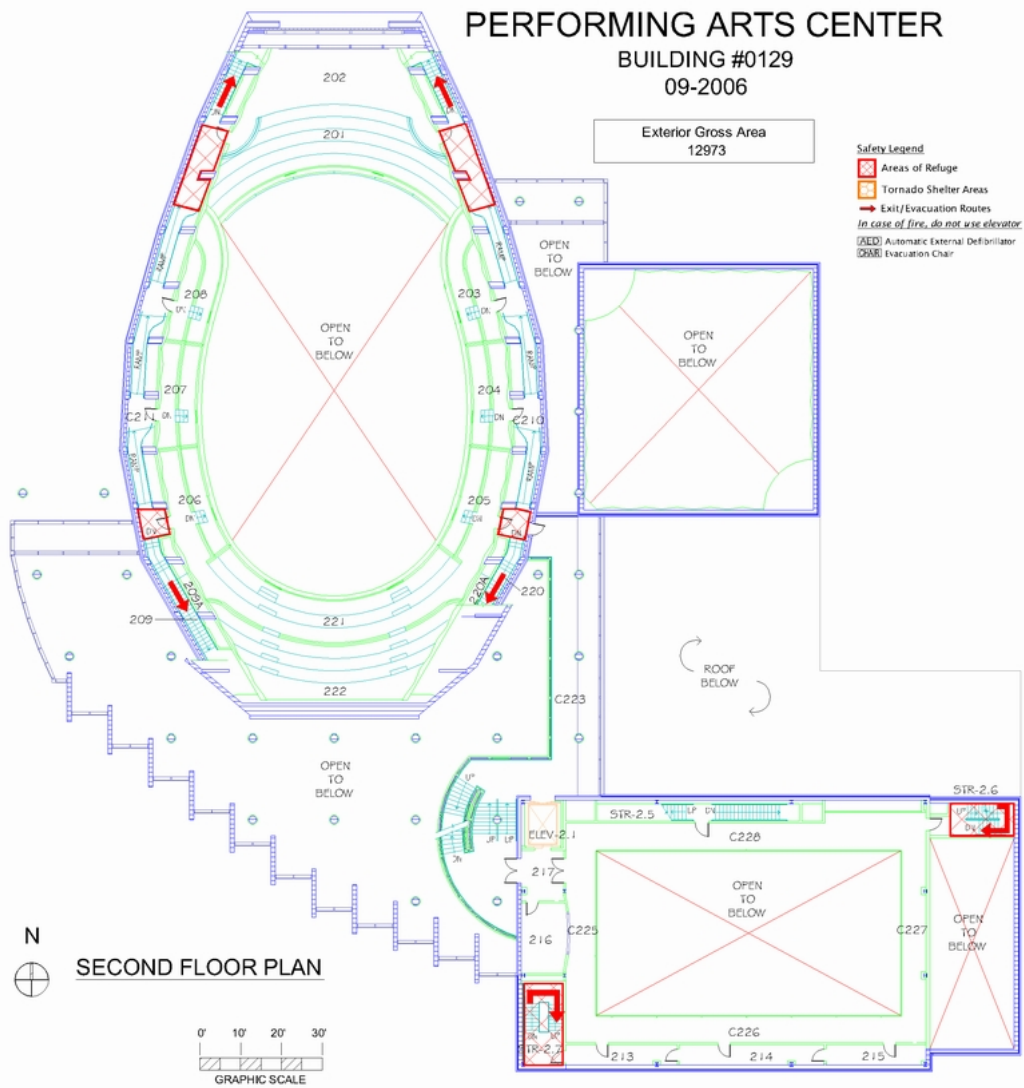
[Print Full Size Map](#)



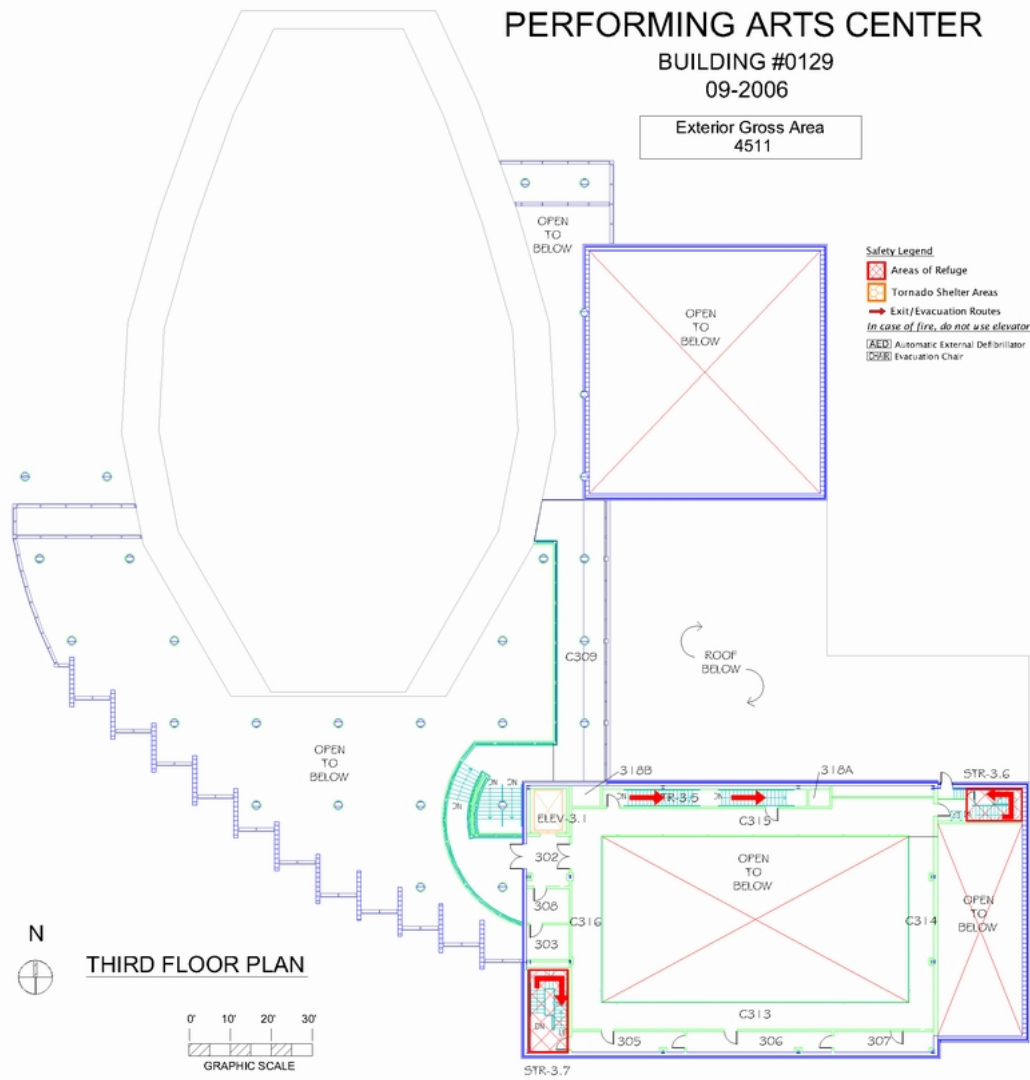
[Print Full Size Map](#)



[Print Full Size Map](#)



[Print Full Size Map](#)



[Print Full Size Map](#)

