

Emergency Evacuation Procedures

Matthews Hall

Page Navigation

- [Severe Weather](#)
 - [Bomb Threat/Fire](#)
 - [Building Evacuation Maps](#)
-

Severe Weather

In the event of severe weather, all building occupants should immediately seek shelter in the designated shelter-in-place area in the building. If unable to safely move to the designated shelter-in-place area, seek shelter in a windowless interior room or hallway on the lowest floor of the building.

First Floor:

Child Development Center shall proceed to Room 127

All staff and others will proceed to the first floor main hallway.

Second and Third Floors:

Proceed to the main hallways and restroom areas of the respective floors.

Bomb Threat/Fire

In the event of a bomb threat or fire in the building, all building occupants should immediately evacuate the building using the nearest exit. Once outside, proceed to the designated assembly area. If unable to safely move to the designated assembly area, contact one or more members of your department or unit to let them know you are safe and inform them of your whereabouts.

Persons with mobility impairments who are unable to safely exit the building should move to a designated area of refuge and await assistance from emergency responders.

All exits are clearly marked and all staff and others will immediately evacuate the building and proceed to parking lot 37 east of Wooten Hall.

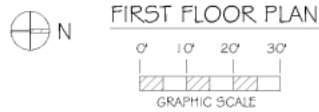
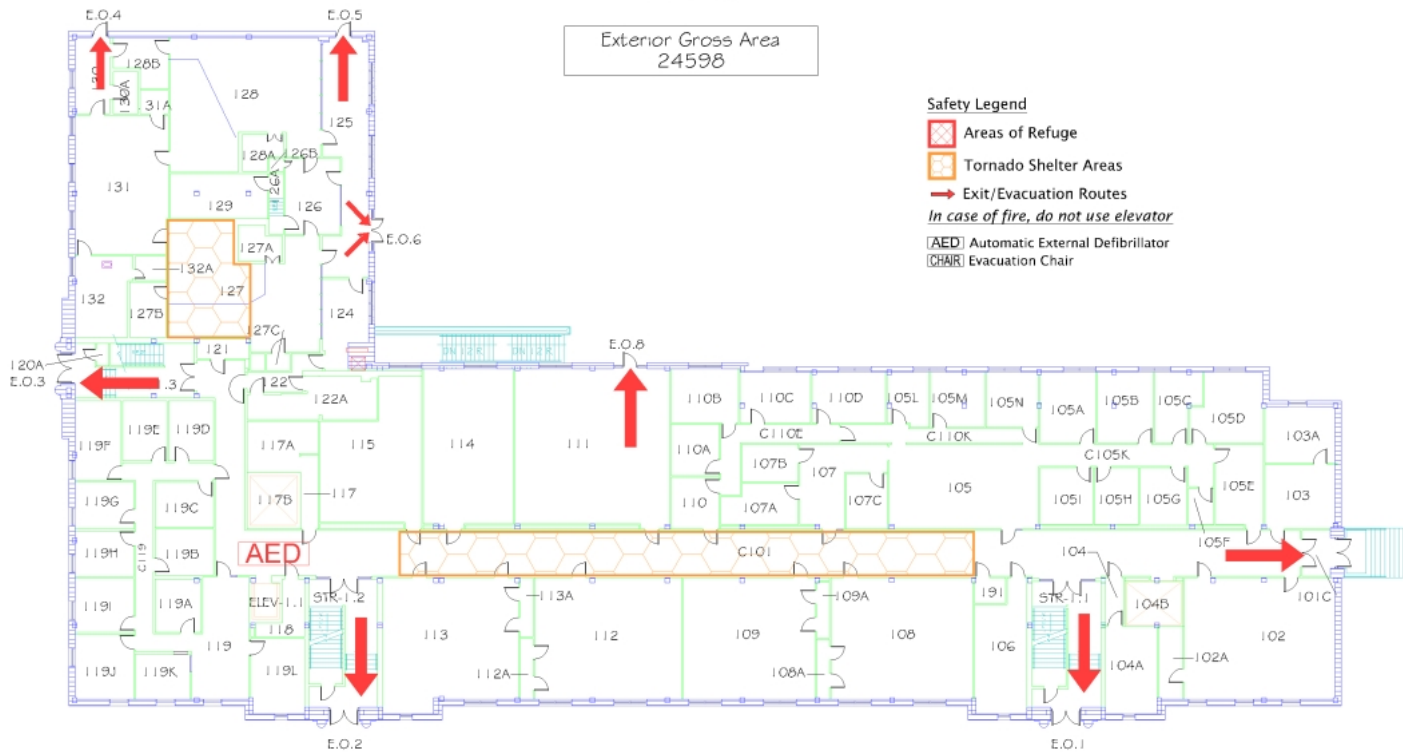
Building Evacuation Maps

[Print Full Size Map](#)

MATTHEWS HALL

BLDG #0106
07-2009

Exterior Gross Area
24598








[Print Full Size Map](#)

MATTHEWS HALL

BUILDING #0106
07-2009

Exterior Gross Area
23457

Safety Legend

-  Areas of Refuge
-  Tornado Shelter Areas
-  Exit/Evacuation Routes
- In case of fire, do not use elevator*
-  [AED] Automatic External Defibrillator
-  [CHAIR] Evacuation Chair

