

# Emergency Evacuation Procedures

## Life Sciences Complex

### Page Navigation

- [Severe Weather](#)
  - [Bomb Threat/Fire](#)
  - [Building Evacuation Maps](#)
- 

### Severe Weather

In the event of severe weather, all building occupants should immediately seek shelter in the designated shelter-in-place area in the building. If unable to safely move to the designated shelter-in-place area, seek shelter in a windowless interior room or hallway on the lowest floor of the building.

**First Floor: Building occupants shall proceed to the first floor interior hallways.**

---

### Bomb Threat/Fire

In the event of a bomb threat or fire in the building, all building occupants should immediately evacuate the building using the nearest exit. Once outside, proceed to the designated assembly area. If unable to safely move to the designated assembly area, contact one or more members of your department or unit to let them know you are safe and inform them of your whereabouts.

Persons with mobility impairments who are unable to safely exit the building should move to a designated area of refuge and await assistance from emergency responders.

**All exits are clearly marked and all staff and others will immediately evacuate the building and proceed to the area north of the University Union.**

---

### Building Evacuation Maps

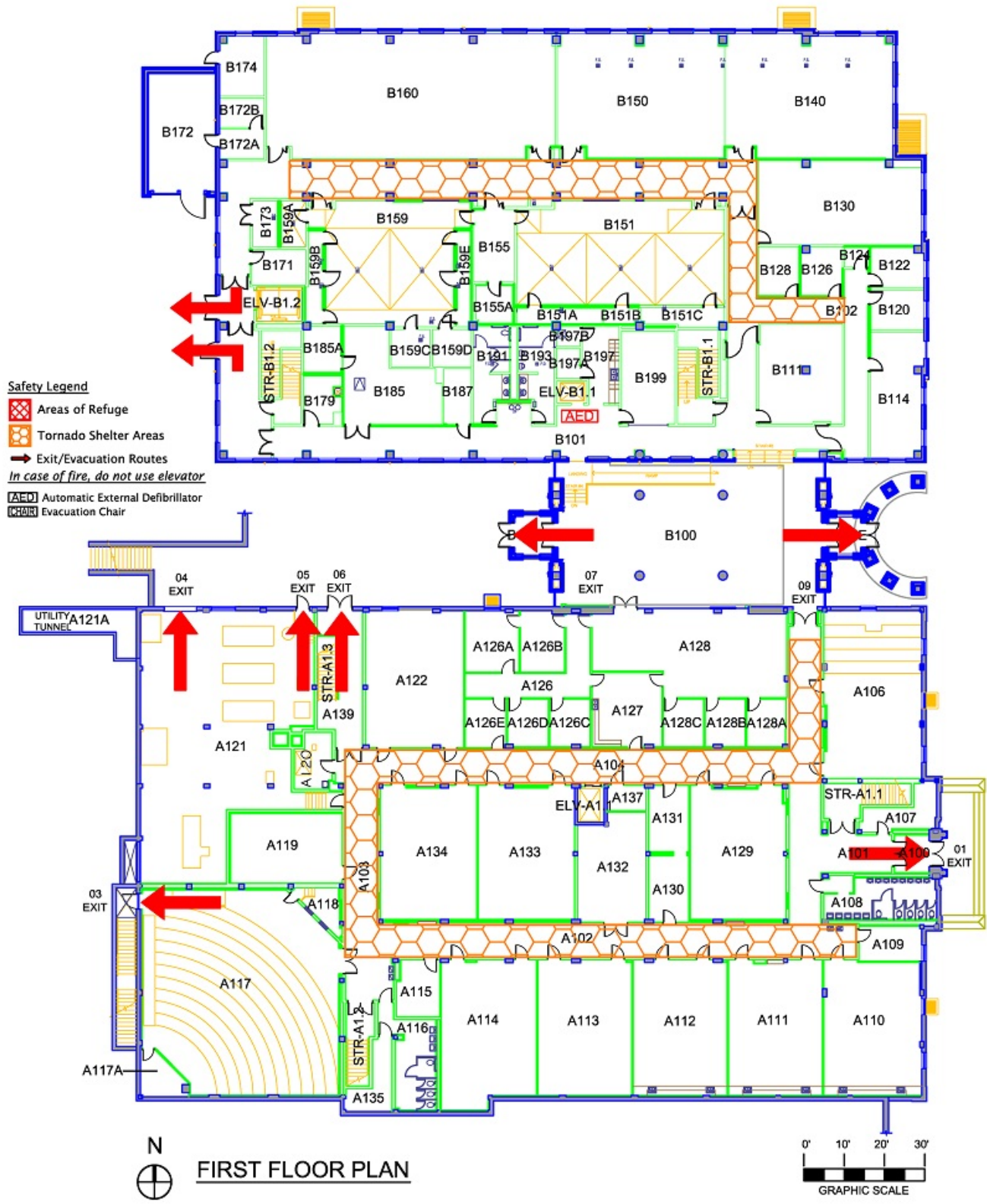
[Print Full Size Map](#)

# LIFE SCIENCE COMPLEX

BLDG #0141

06-2010

Exterior Gross Area  
46393



[Print Full Size Map](#)

# LIFE SCIENCE COMPLEX

BLDG #0141

06-2010

Exterior Gross Area  
43344



# LIFE SCIENCE COMPLEX

BLDG #0141

06-2010

Exterior Gross Area  
43189

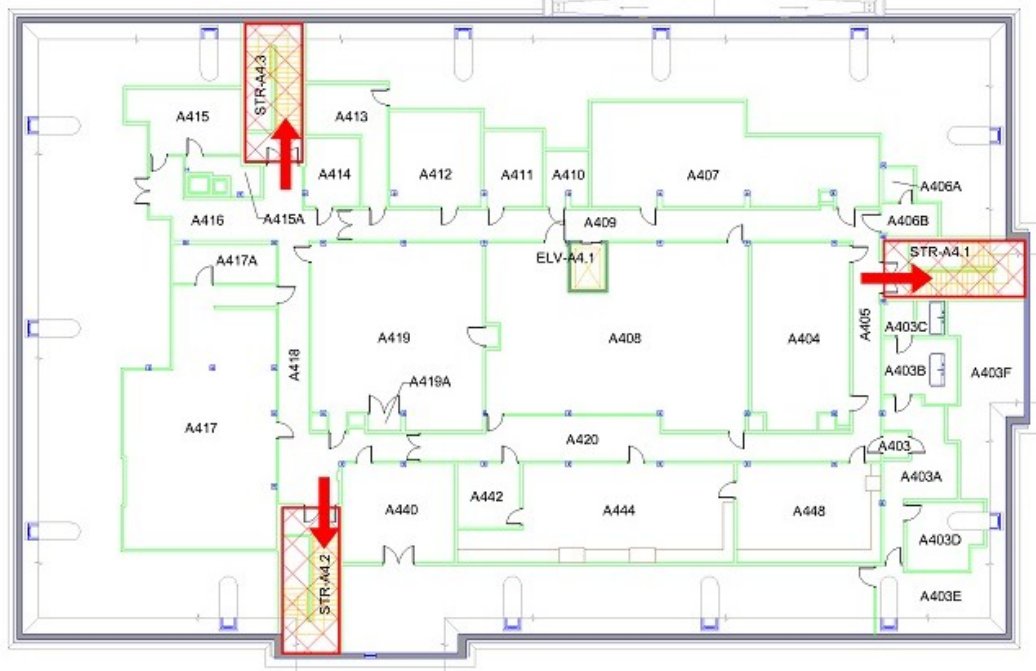
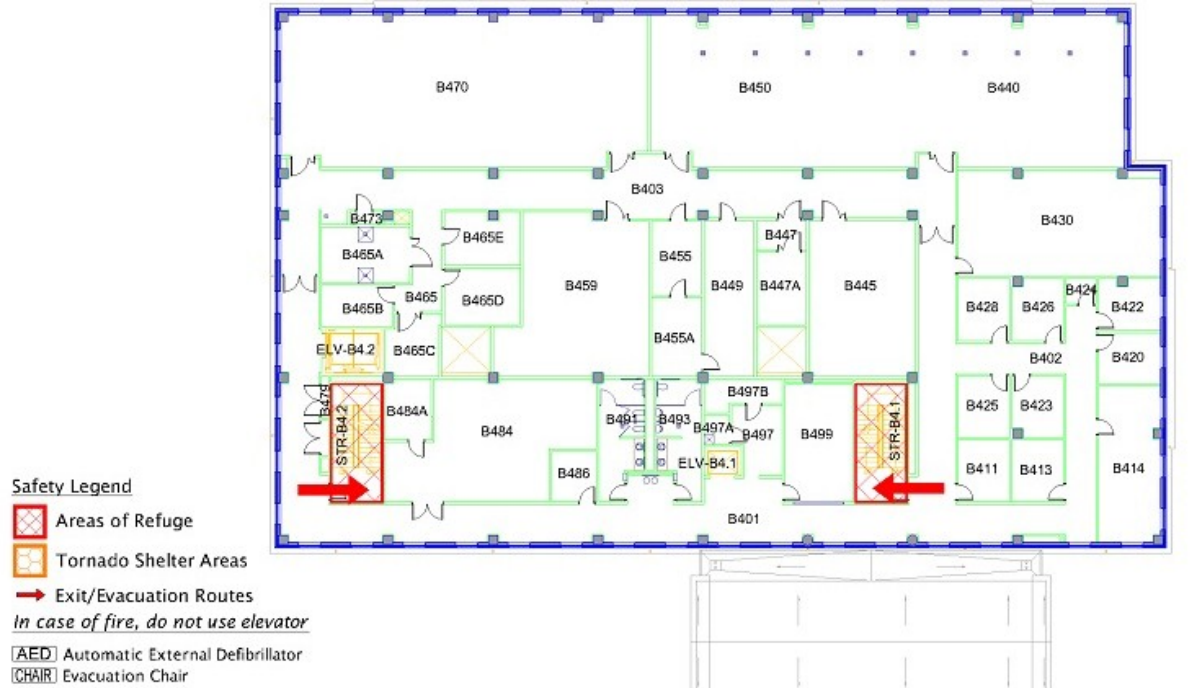


# LIFE SCIENCE COMPLEX

BLDG #0141

06-2010

Exterior Gross Area  
34209



FOURTH FLOOR PLAN



[Print Full Size Map](#)

# LIFE SCIENCE COMPLEX

BLDG #0141  
07-2010

Exterior Gross Area  
9161

