

# Emergency Evacuation Procedures

## Library Annex

### Page Navigation

- [Severe Weather](#)
  - [Bomb Threat/Fire](#)
  - [Building Evacuation Maps](#)
- 

### Severe Weather

In the event of severe weather, all building occupants should immediately seek shelter in the designated shelter-in-place area in the building. If unable to safely move to the designated shelter-in-place area, seek shelter in a windowless interior room or hallway on the lowest floor of the building.

**All building occupants should take shelter in either room 128 or in the hallway on the north side of the building just past room 130.**

---

### Bomb Threat/Fire

In the event of a bomb threat or fire in the building, all building occupants should immediately evacuate the building using the nearest exit. Once outside, proceed to the designated assembly area. If unable to safely move to the designated assembly area, contact one or more members of your department or unit to let them know you are safe and inform them of your whereabouts.

Persons with mobility impairments who are unable to safely exit the building should move to a designated area of refuge and await assistance from emergency responders.

**All building occupants should immediately evacuate the building and proceed to the parking lot between the Library Annex and the Surplus Warehouse.**

---

### Building Evacuation Maps

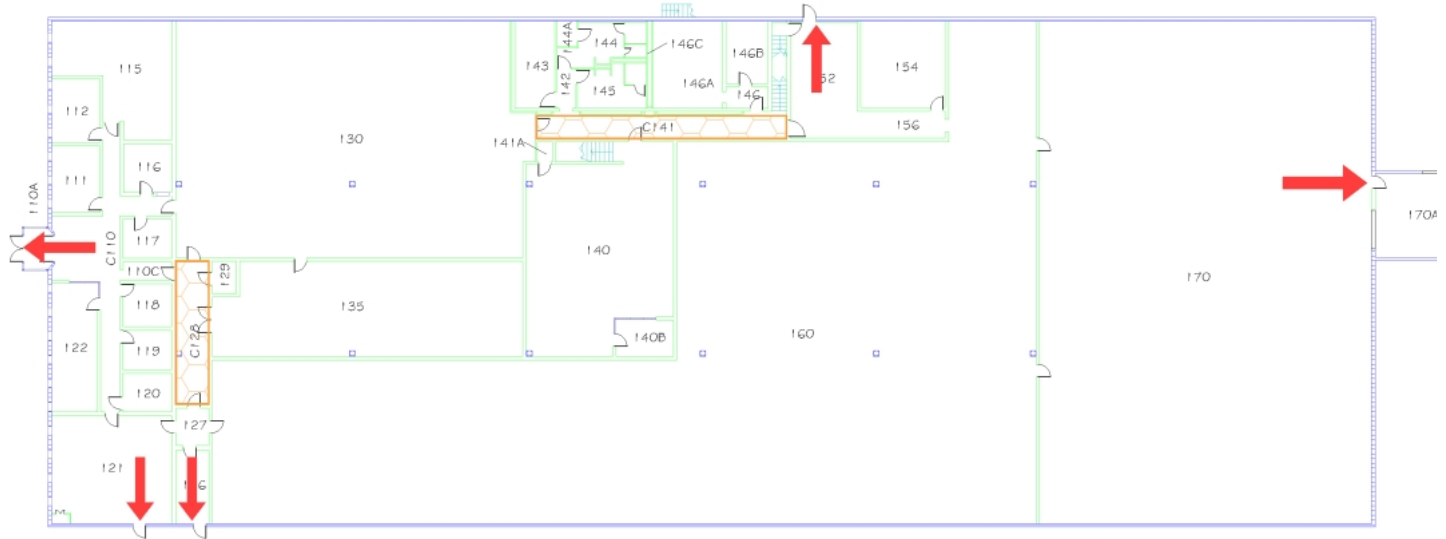
[Print Full Size Map](#)

# LIBRARY ANNEX BUILDING

BUILDING # 0170  
12-2008

Exterior Gross Area  
37068

- Safety Legend
- Areas of Refuge
  - Tornado Shelter Areas
  - Exit/Evacuation Routes
  - In case of fire, do not use elevator*
  - [AED] Automatic External Defibrillator
  - [CHAIR] Evacuation Chair



N  
FIRST FLOOR PLAN

