

Emergency Evacuation Procedures

Language Building

Page Navigation

- [Severe Weather](#)
 - [Bomb Threat/Fire](#)
 - [Building Evacuation Maps](#)
-

Severe Weather

In the event of severe weather, all building occupants should immediately seek shelter in the designated shelter-in-place area in the building. If unable to safely move to the designated shelter-in-place area, seek shelter in a windowless interior room or hallway on the lowest floor of the building.

All building occupants should seek shelter in the interior hallways of the 1st and 2nd floors.

Bomb Threat/Fire

In the event of a bomb threat or fire in the building, all building occupants should immediately evacuate the building using the nearest exit. Once outside, proceed to the designated assembly area. If unable to safely move to the designated assembly area, contact one or more members of your department or unit to let them know you are safe and inform them of your whereabouts.

Persons with mobility impairments who are unable to safely exit the building should move to a designated area of refuge and await assistance from emergency responders.

All exits are clearly marked and all staff and others will immediately evacuate the building and proceed to the lawn south of Hickory Hall.

Building Evacuation Maps





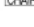
[Print Full Size Map](#)

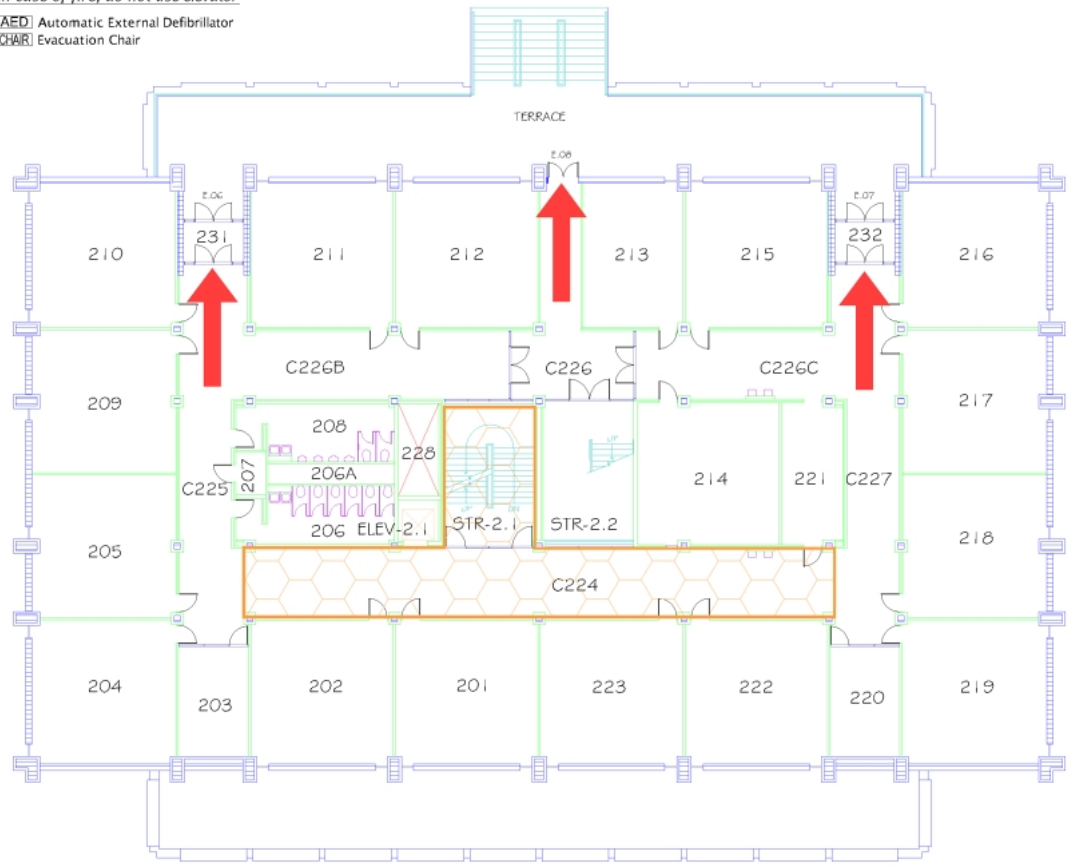
LANGUAGE BUILDING

BUILDING #0148
07-2008

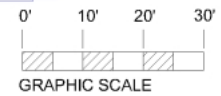
Exterior Gross Area
16641

Safety Legend

-  Areas of Refuge
-  Tornado Shelter Areas
-  Exit/Evacuation Routes
- In case of fire, do not use elevator*
-  AED Automatic External Defibrillator
-  Evacuation Chair



SECOND FLOOR PLAN






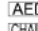

[Print Full Size Map](#)

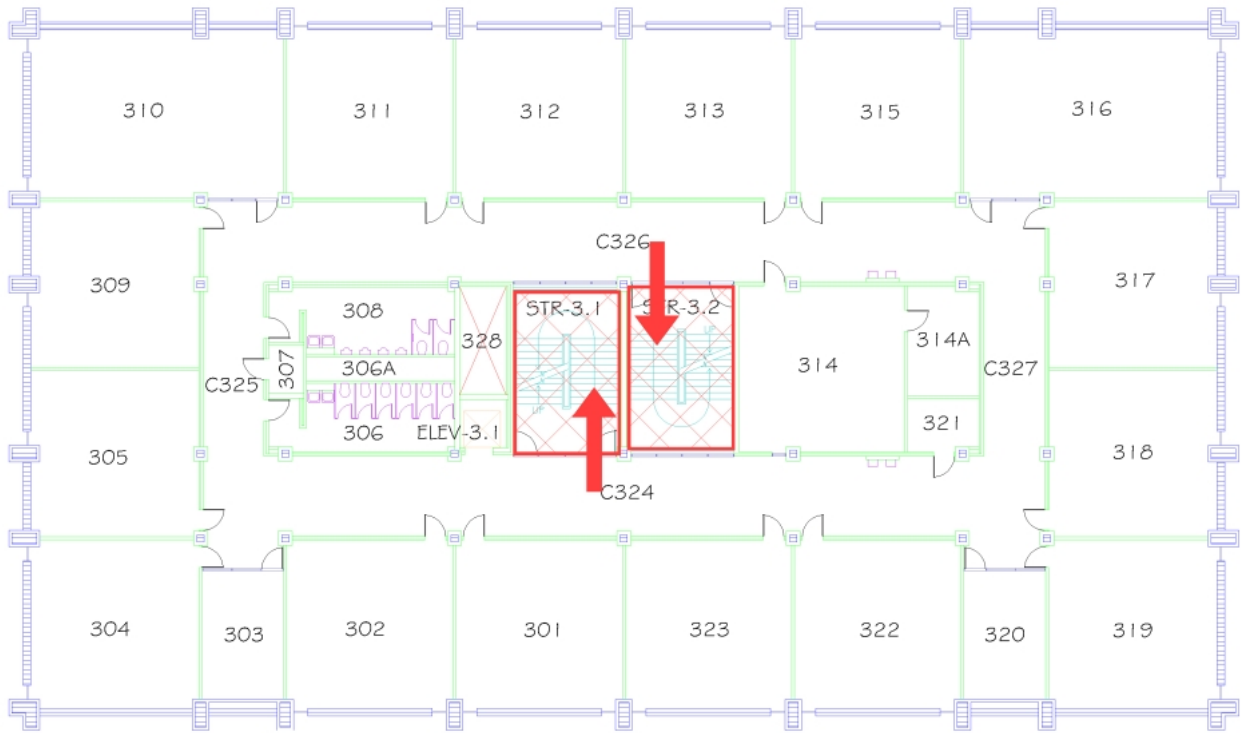
LANGUAGE BUILDING

BUILDING #0148
09-2006

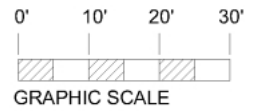
Exterior Gross Area
16780

Safety Legend

-  Areas of Refuge
-  Tornado Shelter Areas
-  Exit/Evacuation Routes
- In case of fire, do not use elevator*
-  AED: Automatic External Defibrillator
-  CHAIR: Evacuation Chair



THIRD FLOOR PLAN








[Print Full Size Map](#)

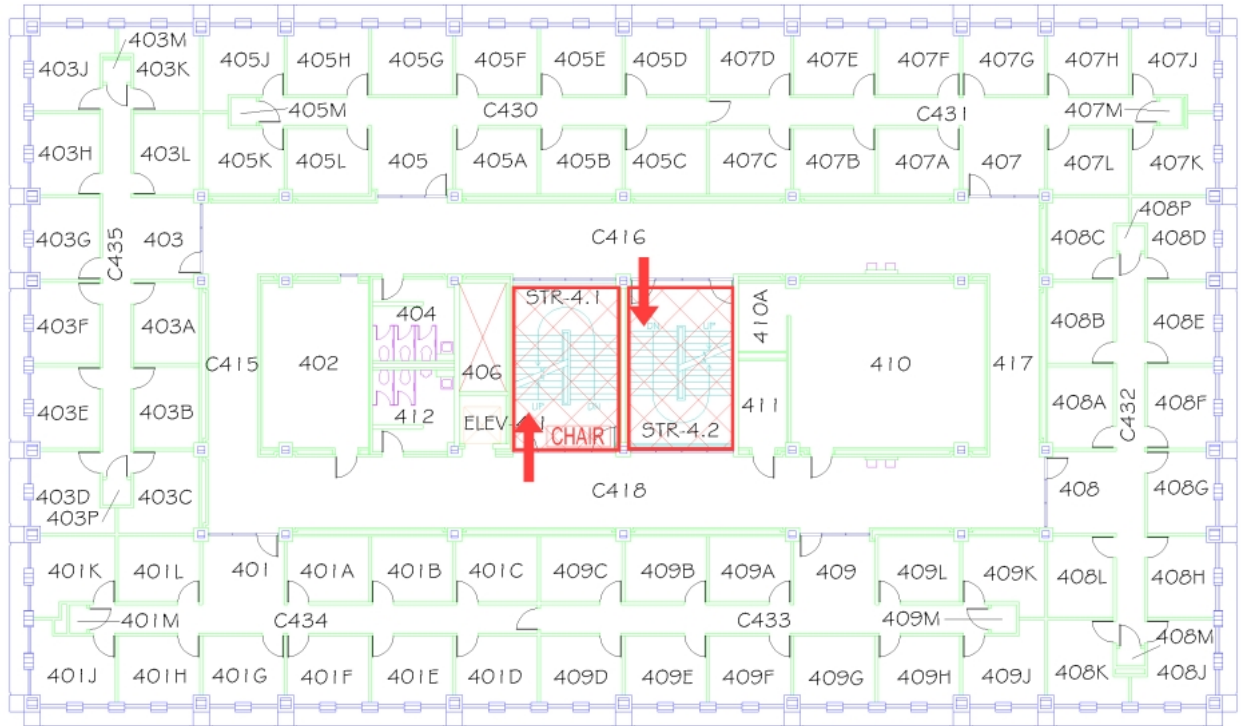
LANGUAGE BUILDING

BUILDING #0148
09-2006

Safety Legend

-  Areas of Refuge
-  Tornado Shelter Areas
-  Exit/Evacuation Routes
- In case of fire, do not use elevator*
-  AED Automatic External Defibrillator
-  CHAIR Evacuation Chair

Exterior Gross Area
16780



FOURTH FLOOR PLAN

