

Emergency Evacuation Procedures

Kristin Farmer Autism Center

Page Navigation

- [Severe Weather](#)
 - [Bomb Threat/Fire](#)
 - [Building Evacuation Maps](#)
-

Severe Weather

In the event of severe weather, all building occupants should immediately seek shelter in the designated shelter-in-place area in the building. If unable to safely move to the designated shelter-in-place area, seek shelter in a windowless interior room or hallway on the lowest floor of the building.

In the event of severe weather, all building occupants should immediately seek shelter in designated tornado shelter areas in the building. If unable to take shelter in a tornado shelter area, seek shelter in a windowless interior room or hallway on the lowest floor of the building.

Bomb Threat/Fire

In the event of a bomb threat or fire in the building, all building occupants should immediately evacuate the building using the nearest exit. Once outside, proceed to the designated assembly area. If unable to safely move to the designated assembly area, contact one or more members of your department or unit to let them know you are safe and inform them of your whereabouts.

Persons with mobility impairments who are unable to safely exit the building should move to a designated area of refuge and await assistance from emergency responders.

The designated assembly area is located on the east side of the building in a grassy area in the adjacent apartment complex.

Building Evacuation Maps

[Print Full Size Map](#)

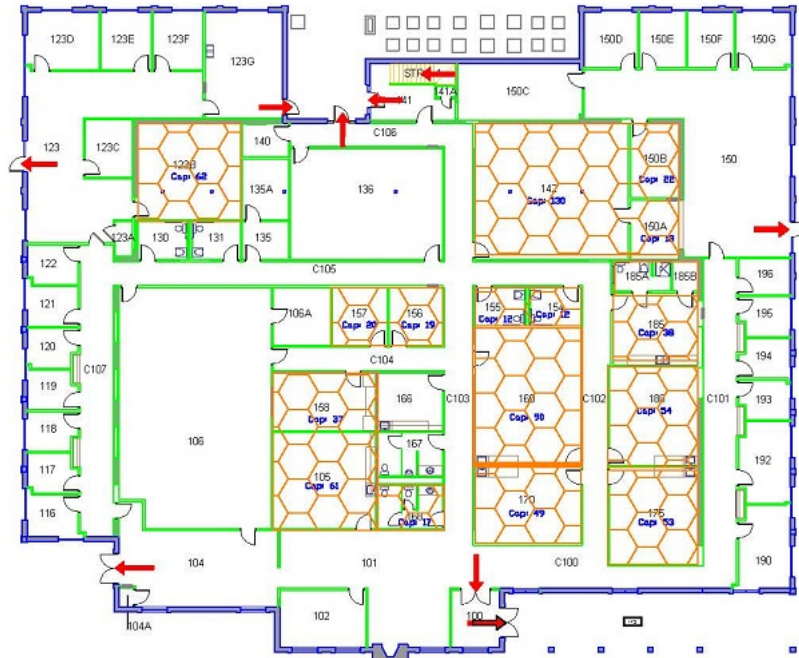
KRISTIN FARMER AUTISM CENTER

BLDG # 0138

08-2012

Exterior Gross Area
19276

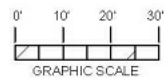
Estimated Shelter Capacity: 694



Safety Legend

- Areas of Refuge
- Tornado Shelter
- Exit/Evacuation In case of fire, do not
- AER Automatic External Release
- EC Evacuation Chair

 **FIRST FLOOR PLAN**
N

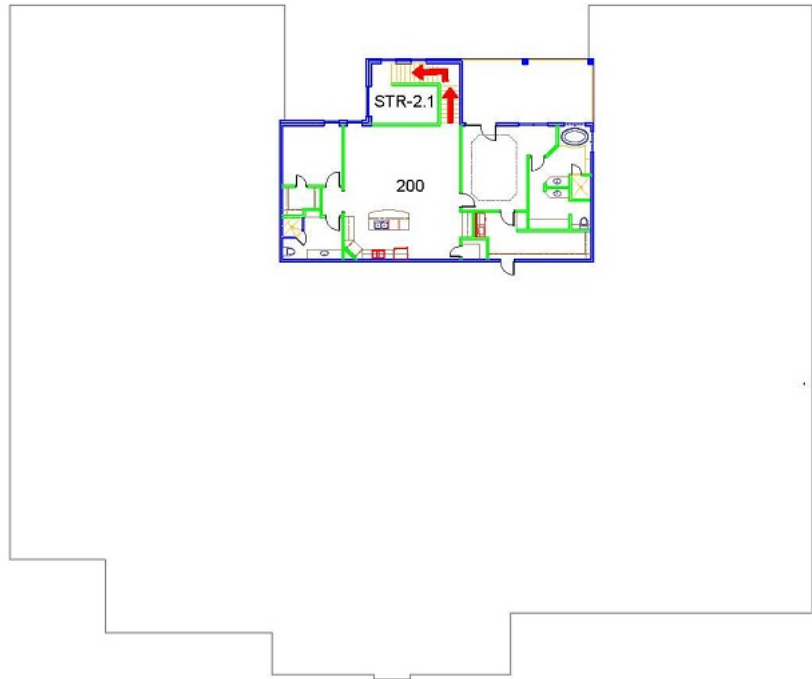


[Print Full Size Map](#)

KRISTIN FARMER AUTISM CENTER

BLDG # 0138
03-2010

Exterior Gross Area
2007



- Safety Legend
- Areas of Refuge
 - Tornado Shelter Area
 - Exit/Evacuation Route
in case of fire, do not use
 - Automatic External Door
 - Evacuation Chair

 **SECOND FLOOR PLAN**
N

