

Emergency Evacuation Procedures

Facilities Complex

Page Navigation

- [Severe Weather](#)
 - [Bomb Threat/Fire](#)
 - [Building Evacuation Maps](#)
-

Severe Weather

In the event of severe weather, all building occupants should immediately seek shelter in the designated shelter-in-place area in the building. If unable to safely move to the designated shelter-in-place area, seek shelter in a windowless interior room or hallway on the lowest floor of the building.

Occupants of all buildings should seek shelter in either

- **Facilities Office Building in the hallway between rooms 150 and 158**
 - **Facilities Service Building in the hallway between room 150 and 160 or in the hallway between rooms 128 and 131**
-

Bomb Threat/Fire

In the event of a bomb threat or fire in the building, all building occupants should immediately evacuate the building using the nearest exit. Once outside, proceed to the designated assembly area. If unable to safely move to the designated assembly area, contact one or more members of your department or unit to let them know you are safe and inform them of your whereabouts.

Persons with mobility impairments who are unable to safely exit the building should move to a designated area of refuge and await assistance from emergency responders.

All exits are clearly marked and all building occupants should immediately evacuate the building and proceed to parking lot 17 north of West Hall.

Building Evacuation Maps

[Print Full Size Map](#)

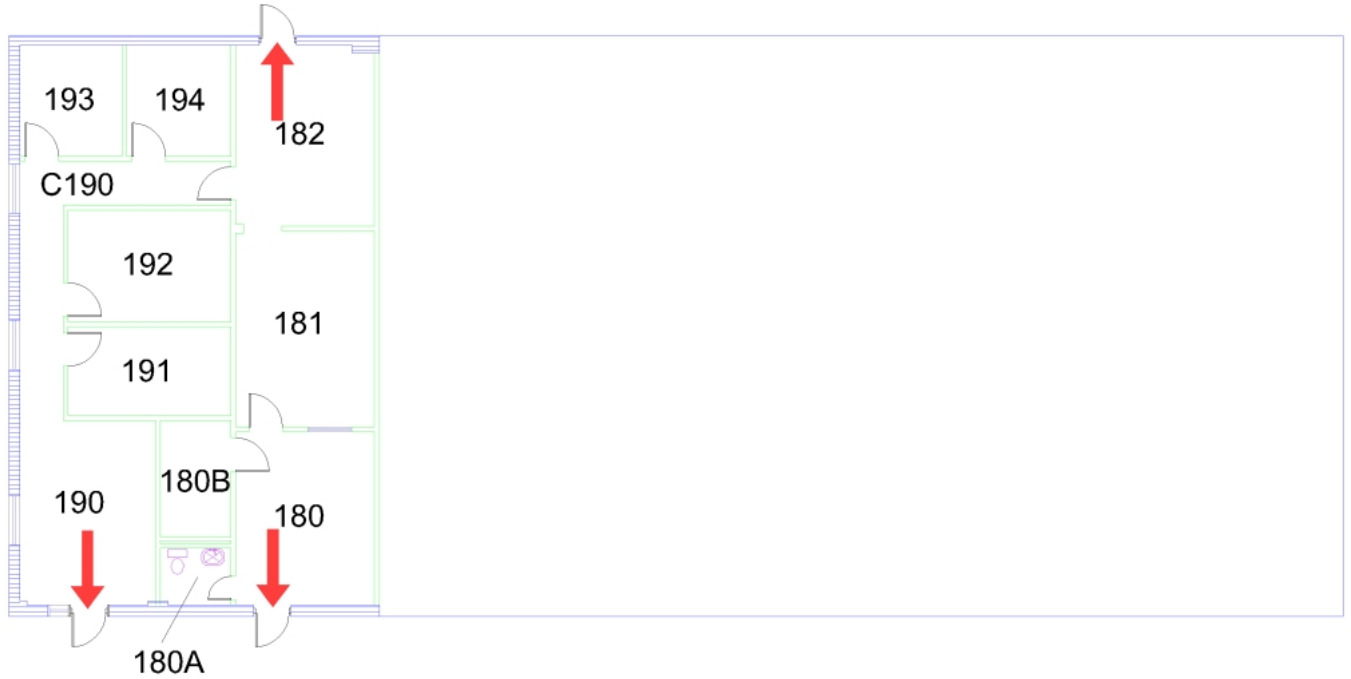
FACILITIES OFFICE BLDG

BLDG #0501

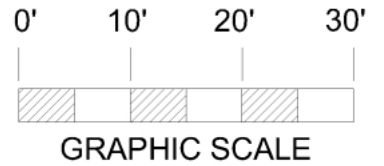
02-2009

Exterior Gross Area
1725

- Safety Legend
- Areas of Refuge
 - Tornado Shelter Areas
 - Exit/Evacuation Routes
 - In case of fire, do not use elevator*
 - [AED] Automatic External Defibrillator
 - [CHAIR] Evacuation Chair



LOWER FLOOR PLAN



[Print Full Size Map](#)






FACILITIES CARPENTER SHOP

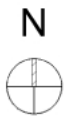
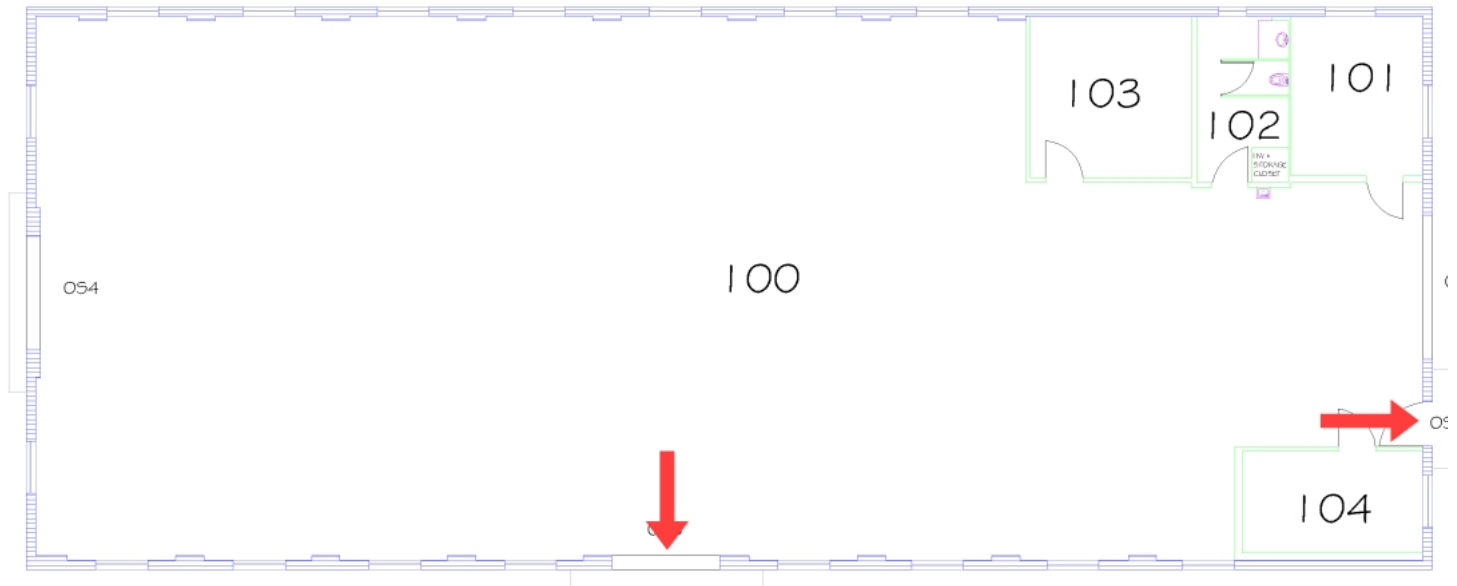
BLDG #0502

01-2007

Exterior Gross Area
4000

Safety Legend

-  Areas of Refuge
-  Tornado Shelter Areas
-  Exit/Evacuation Routes
- In case of fire, do not use elevator*
-  AED Automatic External Defibrillator
-  Evacuation Chair



FIRST FLOOR PLAN



[Print Full Size Map](#)






FACILITIES OFFICE BLDG

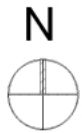
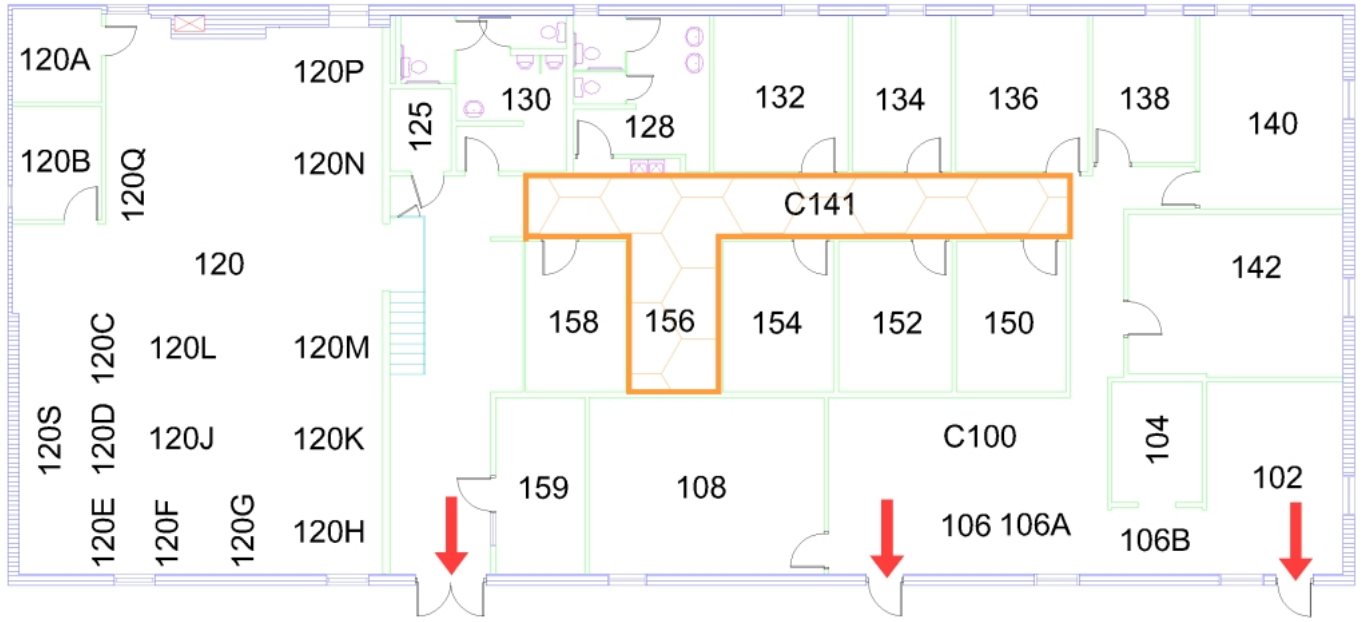
BLDG #0501

06-2009

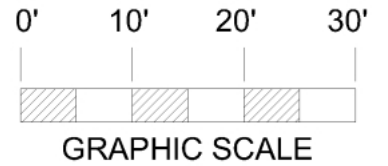
Exterior Gross Area
6267

Safety Legend

-  Areas of Refuge
-  Tornado Shelter Areas
-  Exit/Evacuation Routes
- In case of fire, do not use elevator*
-  AED Automatic External Defibrillator
-  Evacuation Chair



FIRST FLOOR PLAN

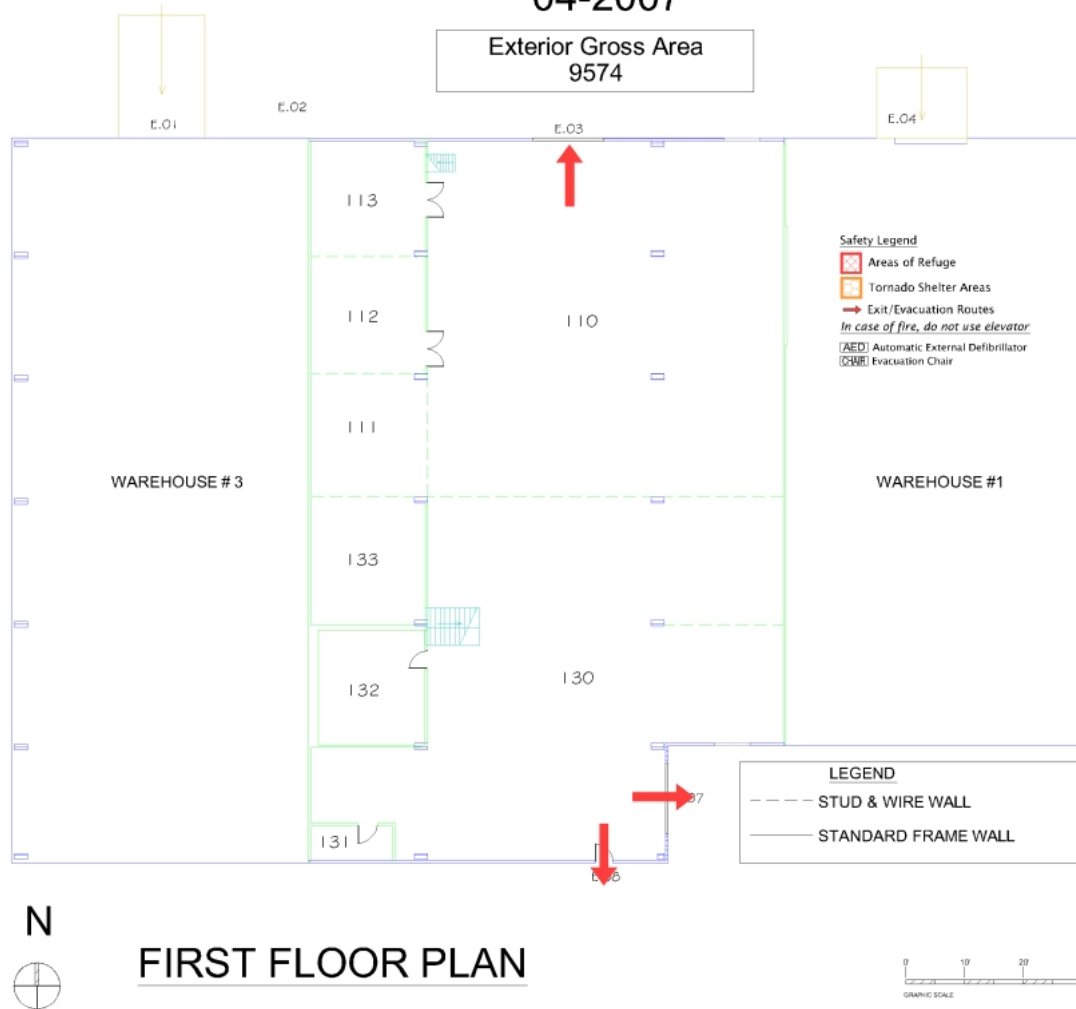


[Print Full Size Map](#)

FACILITIES WAREHOUSE # 2

BLDG #0522

04-2007



FIRST FLOOR PLAN

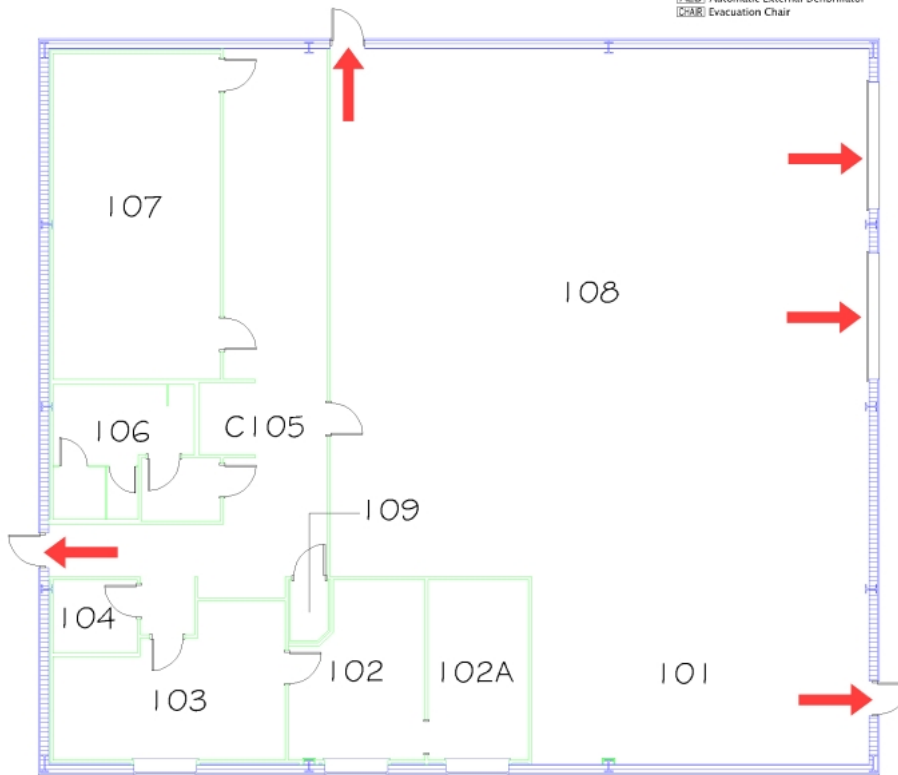
[Print Full Size Map](#)

FACILITIES GROUNDS BLDG

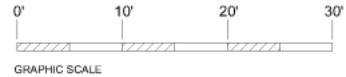
BLDG #0500
08-2006

Exterior Gross Area
5600

- Safety Legend
- Areas of Refuge
 - Tornado Shelter Areas
 - Exit/Evacuation Routes
 - In case of fire, do not use elevator*
 - AED Automatic External Defibrillator
 - CHAIR Evacuation Chair



FIRST FLOOR PLAN

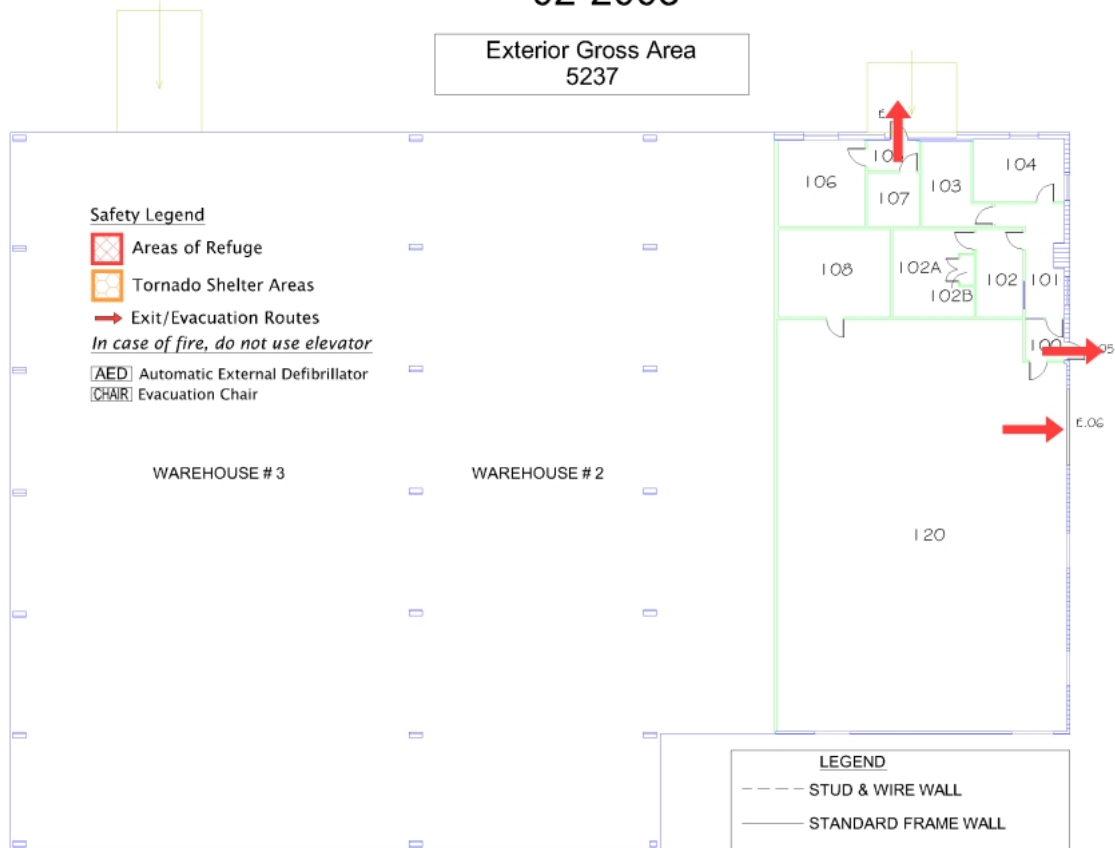


[Print Full Size Map](#)

FACILITIES WAREHOUSE # 1

BLDG #0521

02-2008



FIRST FLOOR PLAN



[Print Full Size Map](#)





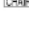
FACILITIES CUSTODIAL SERVICES

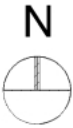
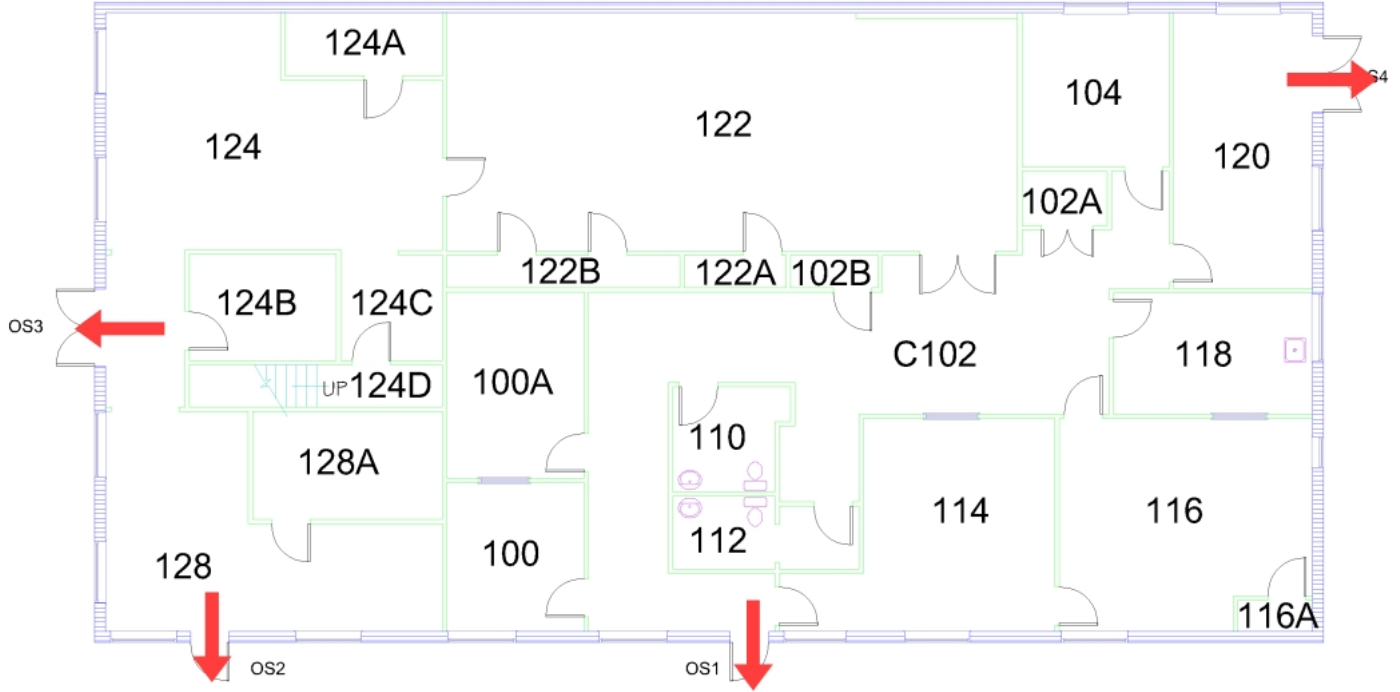
BLDG #0513

08-2006

Exterior Gross Area
4800

Safety Legend

-  Areas of Refuge
-  Tornado Shelter Areas
-  Exit/Evacuation Routes
- In case of fire, do not use elevator*
-  AED Automatic External Defibrillator
-  CHAR Evacuation Chair



FIRST FLOOR PLAN

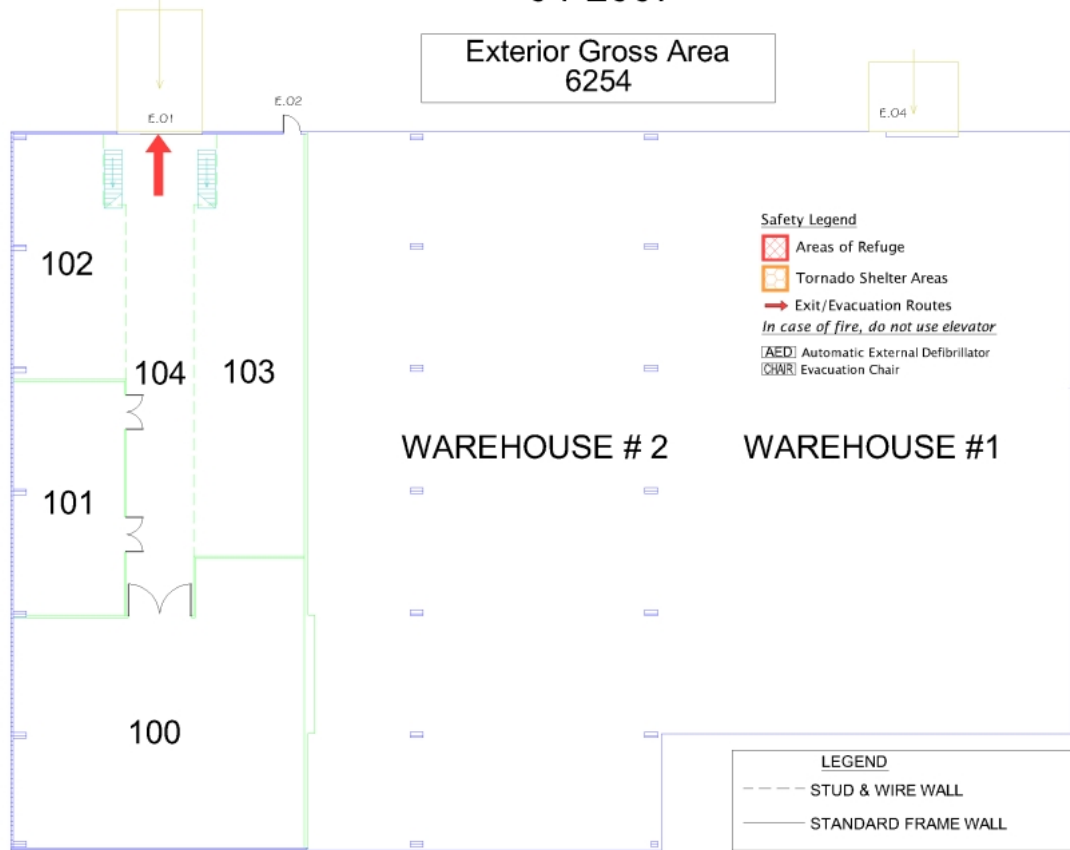


[Print Full Size Map](#)

FACILITIES WAREHOUSE # 3

BLDG #0523

04-2007



FIRST FLOOR PLAN



[Print Full Size Map](#)






FACILITIES SERVICE BLDG

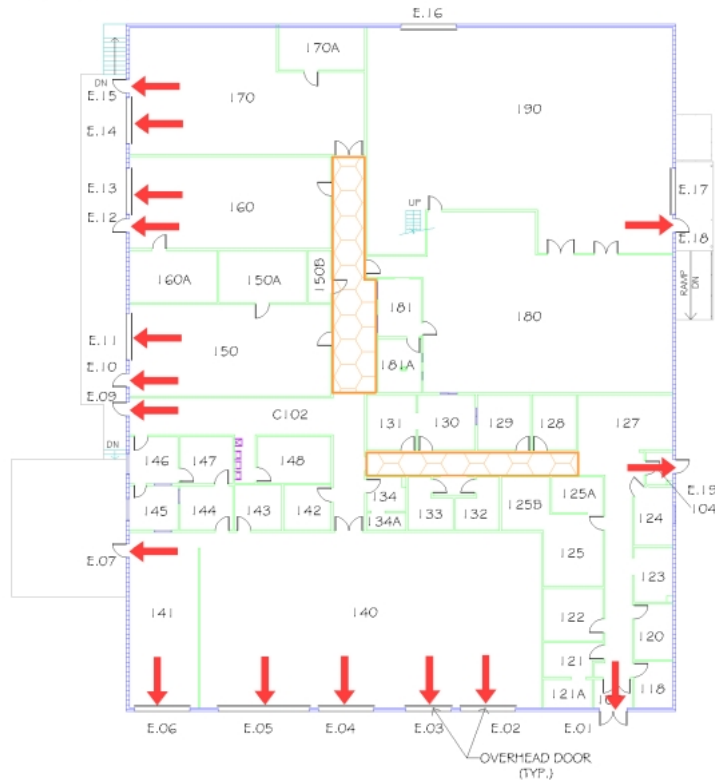
BLDG #0510

07-2009

Exterior Gross Area
18000

Safety Legend

-  Areas of Refuge
-  Tornado Shelter Areas
-  Exit/Evacuation Routes
- In case of fire, do not use elevator*
-  Automatic External Defibrillator
-  Evacuation Chair



N FIRST FLOOR PLAN



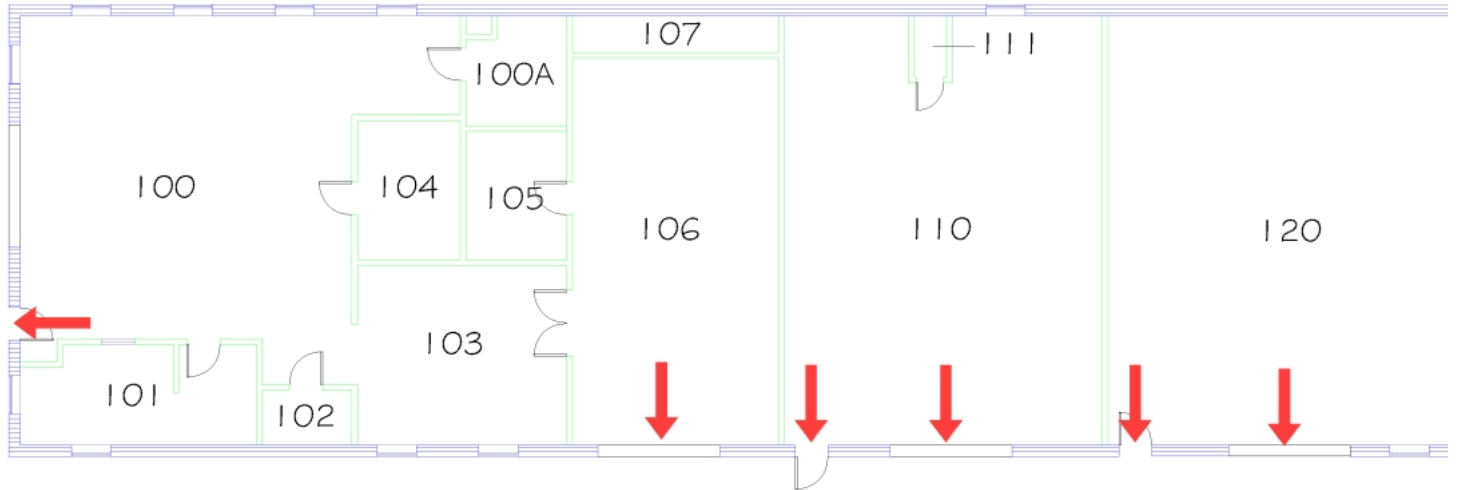
[Print Full Size Map](#)

FACILITIES PAINT SHOP

BLDG #0504
08-2006

Exterior Gross Area
5533

- Safety Legend
- Areas of Refuge
 - Tornado Shelter Areas
 - Exit/Evacuation Routes
In case of fire, do not use elev.
 - [AED] Automatic External Defibrill
 - [CHAIR] Evacuation Chair



N FIRST FLOOR PLAN

