

# Emergency Evacuation Procedures

## Eagle Student Services Center

### Severe Weather

In the event of severe weather, all building occupants should immediately seek shelter in the designated shelter-in-place area in the building. If unable to safely move to the designated shelter-in-place area, seek shelter in a windowless interior room or hallway on the lowest floor of the building.

**First Floor: Occupants on the first floor should proceed to the Southwest corner of the first floor (work room in Registrar's Office). This is directly under the second floor classroom.**

**Second/Third Floor: Occupants on the second and third floors should proceed to the classroom on the second floor, room 255.**

---

### Bomb Threat/Fire

In the event of a bomb threat or fire in the building, all building occupants should immediately evacuate the building using the nearest exit. Once outside, proceed to the designated assembly area. If unable to safely move to the designated assembly area, contact one or more members of your department or unit to let them know you are safe and inform them of your whereabouts.

Persons with mobility impairments who are unable to safely exit the building should move to a designated area of refuge and await assistance from emergency responders.

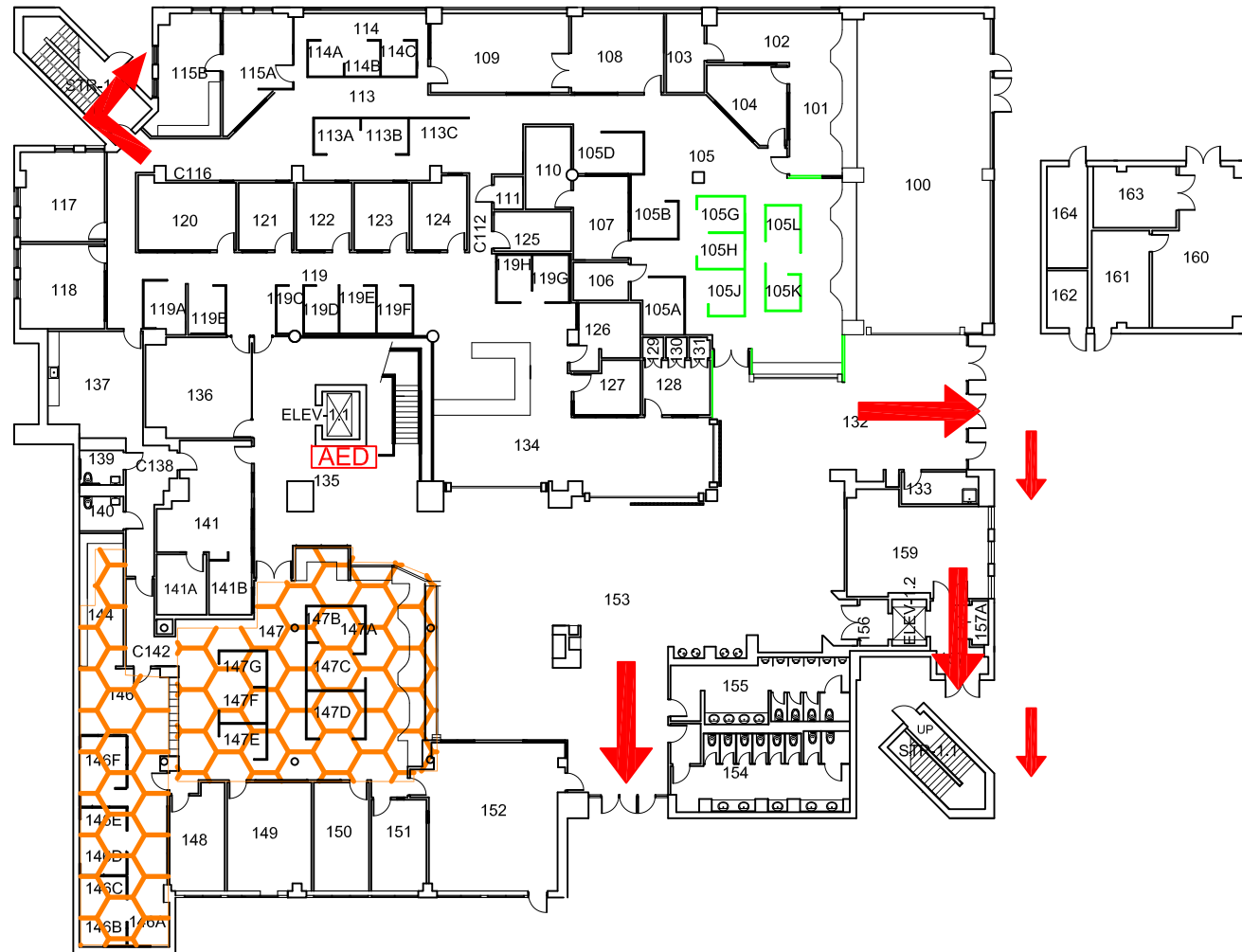
**All building occupants should immediately evacuate to the greenspace on the north side of Willis Library.**

# EAGLE STUDENT SERVICES CENTER






BLDG #0113

04-2016

Exterior Gross Area  
24898

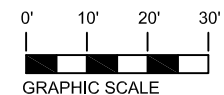


## Safety Legend

-  Areas of Refuge
-  Tornado Shelter Areas
-  Exit/Evacuation Routes
- In case of fire, do not use elevator*
-  AED Automatic External Defibrillator
-  CHAIR Evacuation Chair



**FIRST FLOOR PLAN**

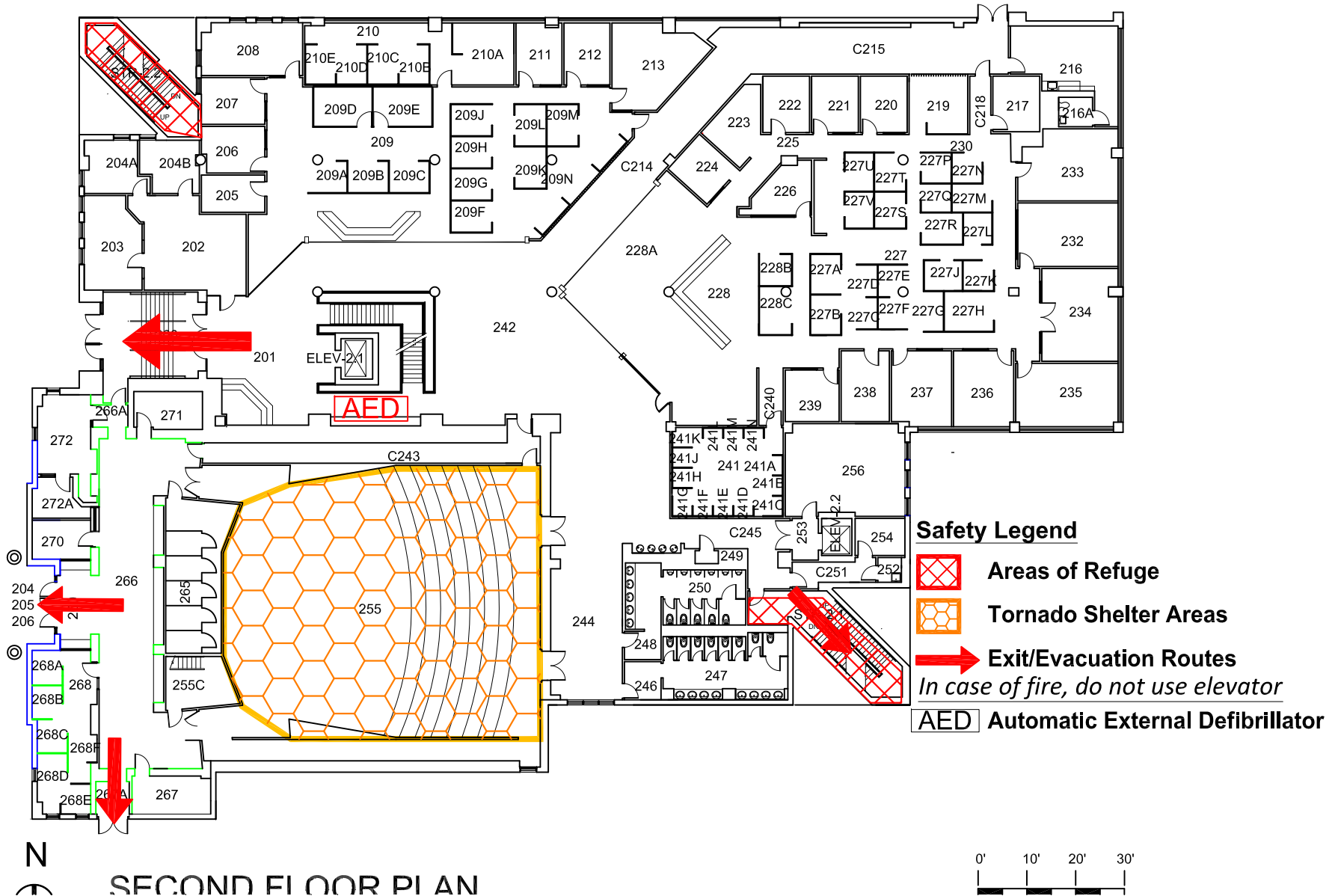


# EAGLE STUDENT SERVICES CENTER

BLDG #0113

04-2016

Exterior Gross Area  
29545



SECOND FLOOR PLAN

