

# Emergency Evacuation Procedures

## Dance and Theater (DATH) Building

### Severe Weather

In the event of severe weather, all building occupants should immediately seek shelter in the designated shelter-in-place area in the building. If unable to safely move to the designated shelter-in-place area, seek shelter in a windowless interior room or hallway on the lowest floor of the building.

**All building occupants should take shelter in the interior of office suite 103. If time does permit, seek shelter in the Speech and Hearing Sciences clinic.**

---

### Bomb Threat/Fire

In the event of a bomb threat or fire in the building, all building occupants should immediately evacuate the building using the nearest exit. Once outside, proceed to the designated assembly area. If unable to safely move to the designated assembly area, contact one or more members of your department or unit to let them know you are safe and inform them of your whereabouts.

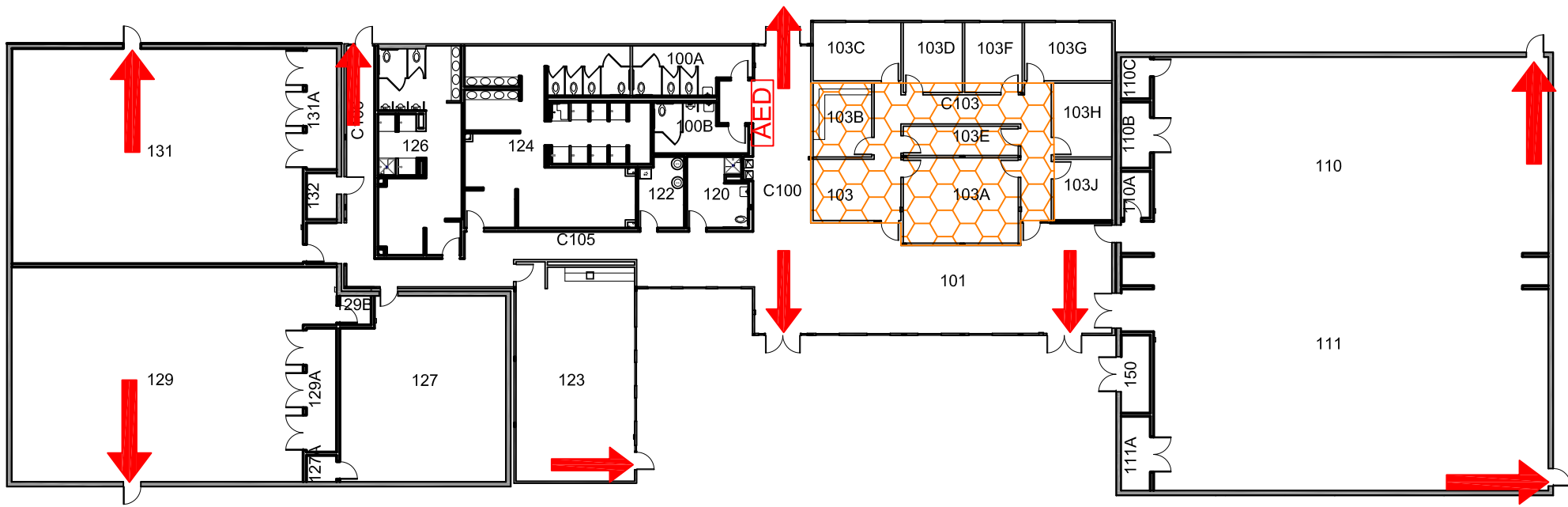
Persons with mobility impairments who are unable to safely exit the building should move to a designated area of refuge and await assistance from emergency responders.

**All building occupants should immediately evacuate the building and proceed to parking lot 53 south of the building.**

# DANCE AND THEATER ARTS BUILDING


BLDG #0159  
06-2013


Exterior Gross Area  
18060




## FIRST FLOOR PLAN


### Safety Legend

 Areas of Refuge

 Tornado Shelter Areas

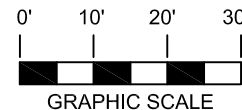
 Exit/Evacuation Routes

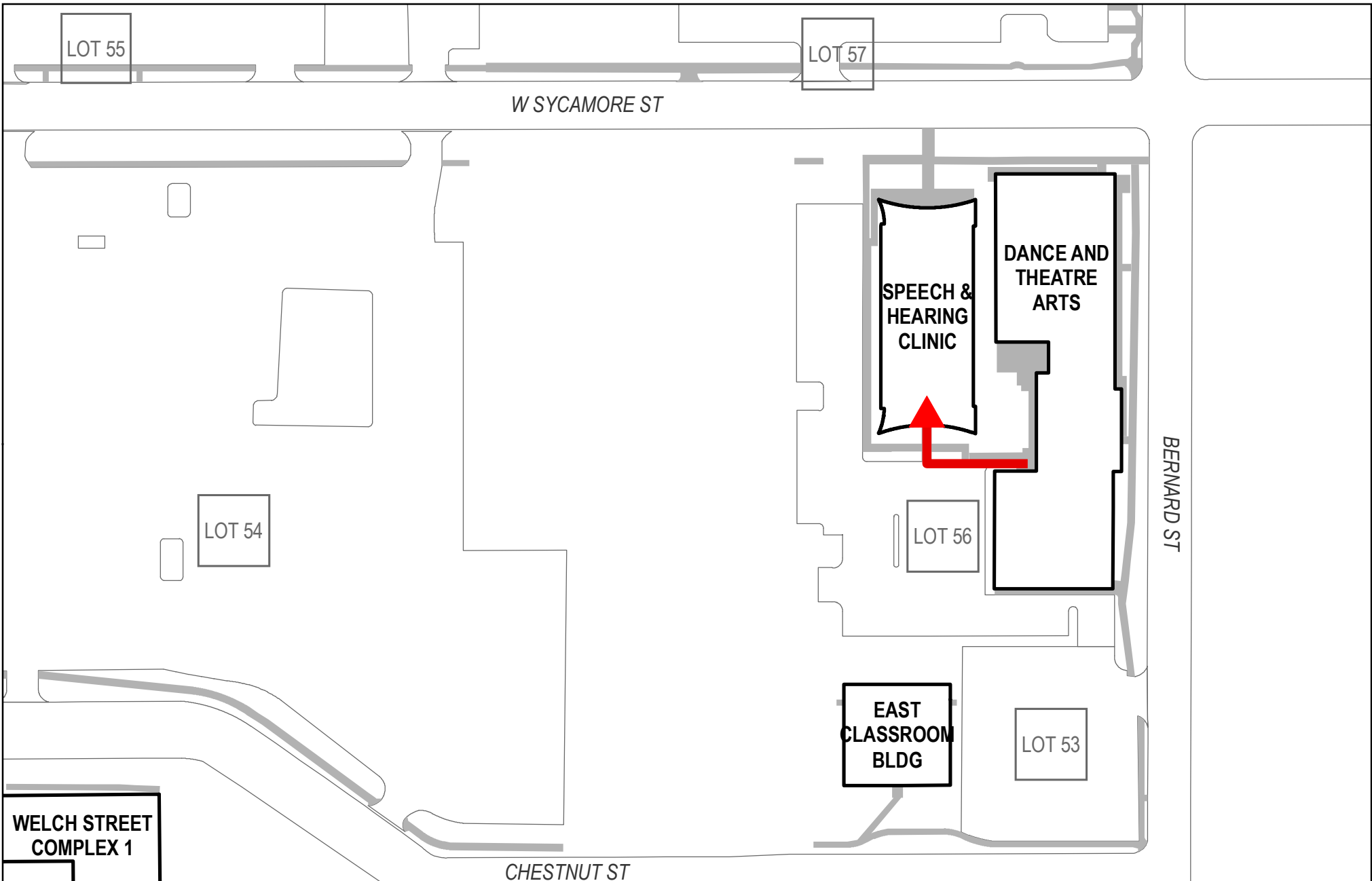
*In case of fire, do not use elevator*

 Automatic External Defibrillator


 Evacuation Chair

Seek shelter in an interior portion of the building. If time permits, move to Speech and Hearing Building for Tornado Sheltering.





**WELCH STREET  
COMPLEX 1**

 <b>NORTH</b>	<b>TITLE:</b> Dance & Theatre Building Severe Weather Evacuation and Shelter Map			
	<b>SCALE BAR:</b> 0      50      100      200 Ft			
<b>RID:</b> 14057-03	<b>PAPER:</b> 8.5 x 11	<b>MAP SCALE:</b> 1 : 1,000	<b>DATE:</b> 1/6/2014	<b>AUTHOR:</b> pp0003

**TORNADO SHELTERING**  
 If time permits, move to Speech and Hearing Clinic for tornado sheltering. If immediate tornado sheltering is needed, seek shelter in an interior room away from exterior walls and windows.

This map has been compiled for UNT utilizing various sources. No guarantee is given or implied as to the accuracy or precision of this data. Created by UNT Facilities GIS, 940-369-8049.

**RISK MANAGEMENT SERVICES**  
 UNIVERSITY OF NORTH TEXAS  
 RISK MANAGEMENT SERVICES  
 700 N TEXAS BLVD | DENTON | TX | 76203  
 (940) 369-5147 | emergency.unt.edu