

Emergency Evacuation Procedures

Business Leadership Building

Severe Weather

In the event of severe weather, all building occupants should immediately seek shelter in the designated shelter-in-place area in the building. If unable to safely move to the designated shelter-in-place area, seek shelter in a windowless interior room or hallway on the lowest floor of the building.

All building occupants should take shelter in rooms 055, 077, 090, and the restrooms on the basement level. In rooms 170, 155, and the restrooms on the first floor.

Bomb Threat/Fire

In the event of a bomb threat or fire in the building, all building occupants should immediately evacuate the building using the nearest exit. Once outside, proceed to the designated assembly area. If unable to safely move to the designated assembly area, contact one or more members of your department or unit to let them know you are safe and inform them of your whereabouts.

Persons with mobility impairments who are unable to safely exit the building should move to a designated area of refuge and await assistance from emergency responders.

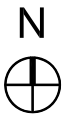
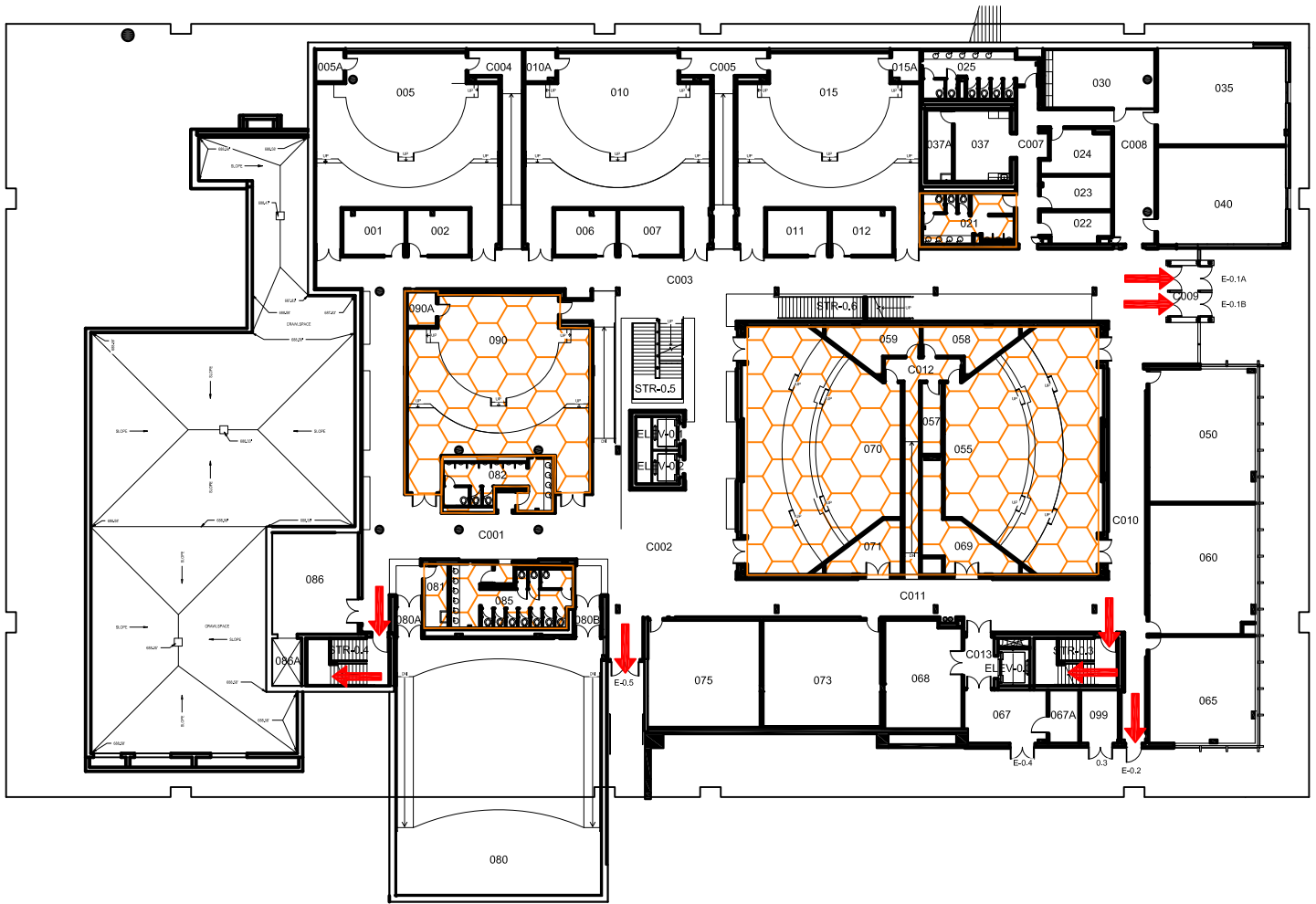
All building occupants should immediately evacuate the building and proceed to the south side of Crumley Hall in the grassy area, west of parking lot 24.

BUSINESS LEADERSHIP BUILDING

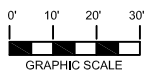
BUILDING #0156

05-2011



Exterior Gross Area
43659




BASEMENT FLOOR PLAN




Safety Legend

-  Areas of Refuge
-  Tornado Shelter Areas

 Exit/Evacuation Routes
In case of fire, do not use elevator

 Automatic External Defibrillator

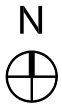
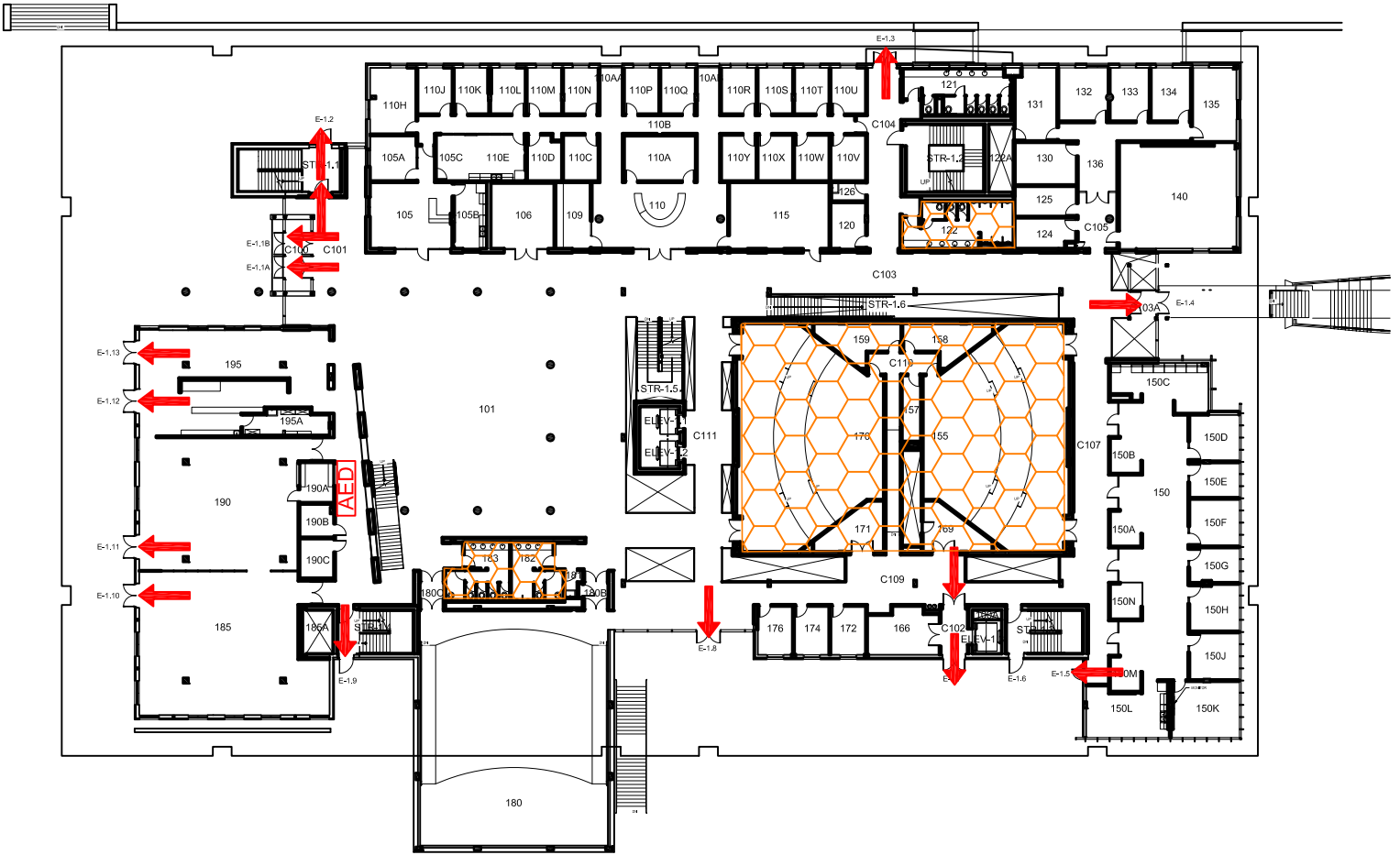
 Evacuation Chair

BUSINESS LEADERSHIP BUILDING

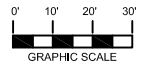
BUILDING #0156

05-2011



Exterior Gross Area
48058





FIRST FLOOR PLAN




Safety Legend

-  Areas of Refuge
-  Tornado Shelter Areas

 Exit/Evacuation Routes
In case of fire, do not use elevator

 AED Automatic External Defibrillator

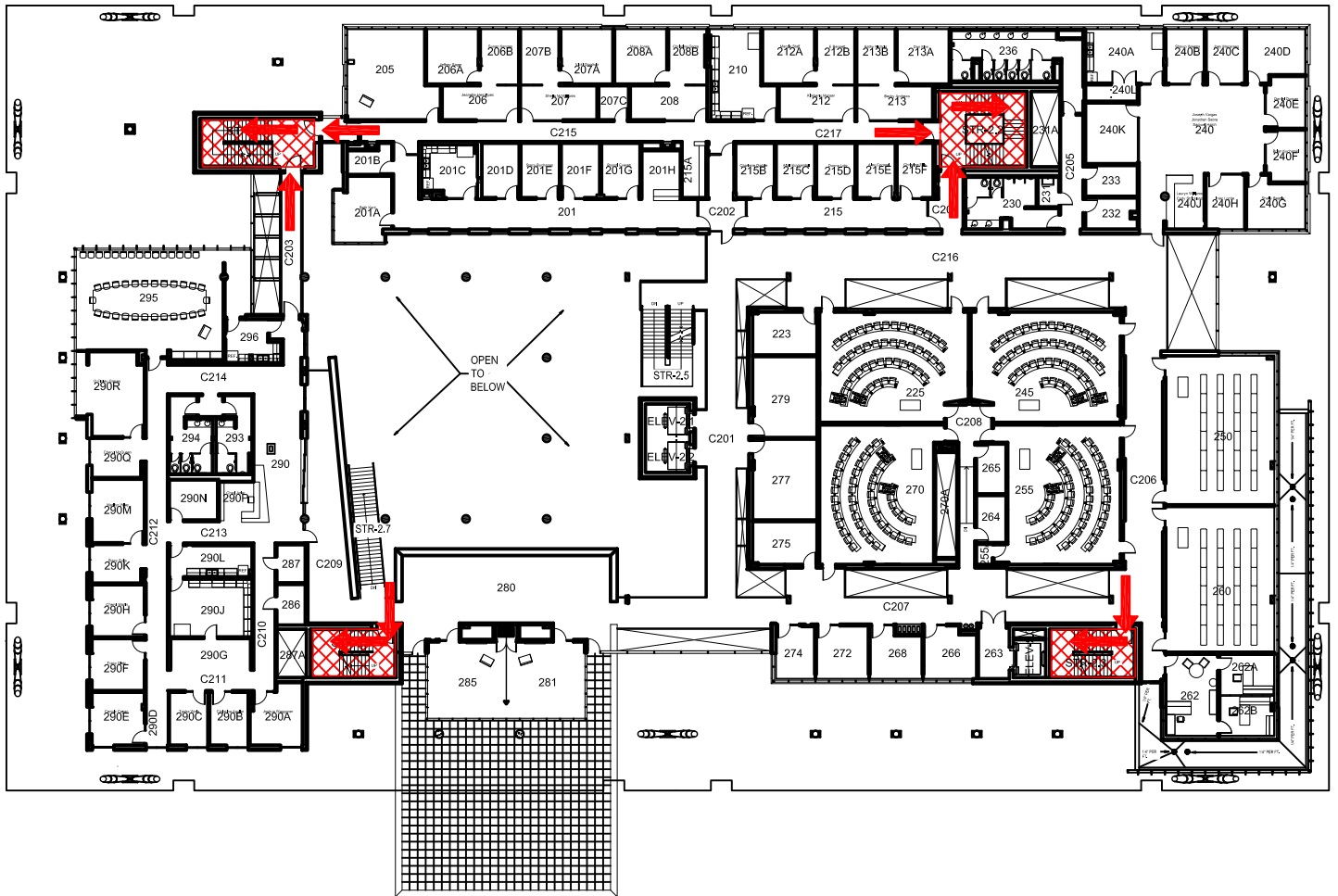
 CHAIR Evacuation Chair

BUSINESS LEADERSHIP BUILDING

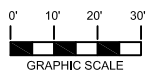
BUILDING #0156

02-2014

Exterior Gross Area
37818



N
SECOND FLOOR PLAN



Safety Legend

- Areas of Refuge
- Tornado Shelter Areas

Exit/Evacuation Routes
In case of fire, do not use elevator

Automatic External Defibrillator

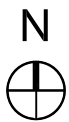
Evacuation Chair

BUSINESS LEADERSHIP BUILDING

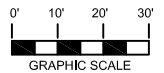
BUILDING #0156

05-2011

Exterior Gross Area
43723



THIRD FLOOR PLAN



Safety Legend

- Areas of Refuge
- Tornado Shelter Areas

➔ Exit/Evacuation Routes
In case of fire, do not use elevator

AED Automatic External Defibrillator

CHAIR Evacuation Chair