



# Campus Carry

Senate Bill 11

# What does “Campus Carry” mean?

- **Campus Carry** would allow those licensed individuals to carry **concealed handguns** into buildings on college campuses, except in locations the University establishes as prohibited.
- “Open Carry” would allow concealed handgun licensees to carry on the outside of their clothing a properly licensed gun. Under the new law, **openly** carrying such **handguns will still not be allowed** on college campuses.
- “Campus Carry” is not “Open Carry”



# Campus Carry

- Effective date August 1, 2016.
- Institution may establish rules for storage in residence facilities.
- After consulting with students, staff, and faculty the President or CEO **shall** establish rules regarding the carrying of concealed handguns by license holders on the campus.



# Campus Carry (continued)

- President or CEO **may not** establish rules that generally prohibit license holders from carrying concealed handguns.
- Institution must give **effective notice** of a premise which license holders may not carry.
- Within 90 days after rules are established, Board of Regents **shall** review provisions.
- Board may vote to amend rules. If amended, provisions are final.



# Campus Carry (continued)

- Institution must publish rules on website.
- By September 1 of each even numbered years, institution **shall** submit report to legislature describing rules and explain the reasons for the rules.
- CHL holders must intentionally and knowingly display the handgun in plain view of another person to be criminally liable under this law.



# 2013 Texas Convictions

	Total Convictions	CHL Convictions
Murder	364	3
Aggravated Assault	3182	10
Kidnapping	152	0
Robbery	3191	0
Burglary	7730	1
Terroristic Threat	1078	0



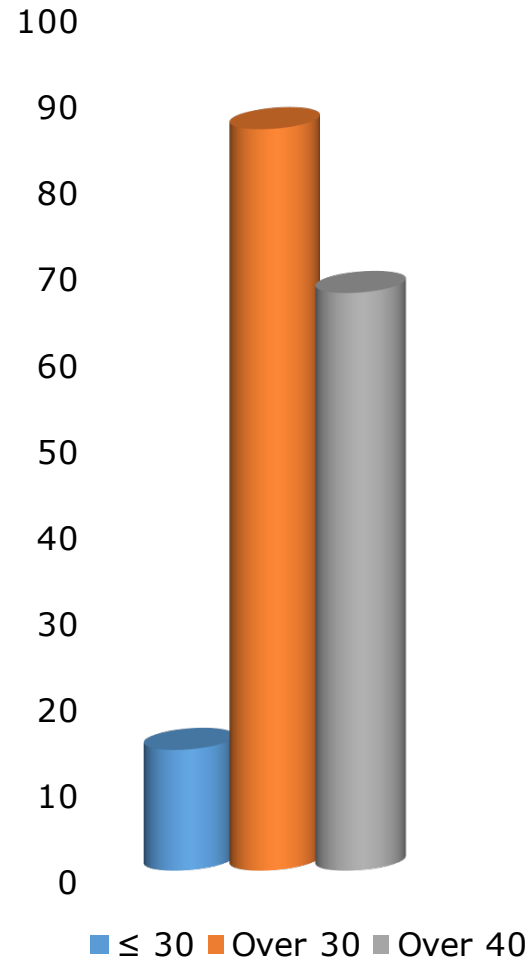
# Campus Carry (continued)

Effective Notice (Posted where handguns are prohibited)

*"Pursuant to Section 30.06, Penal Code (trespass by license holder with a concealed handgun), a person licensed under Subchapter H, Chapter 411, Government Code (handgun licensing law), may not enter this property with a concealed handgun"*



## 2014 Demographics



# Texas DPS

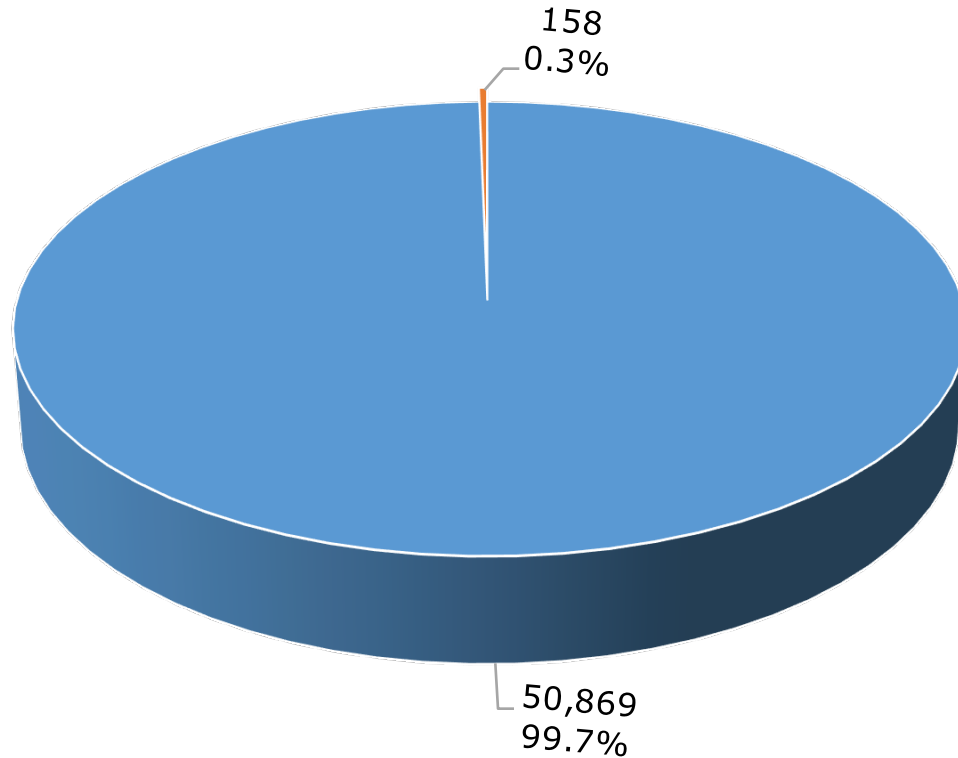
Around 3% of population had a CHL.

- 86% of CHLs issued to individuals over 30.
- 67% of CHLs issued to individuals over 40.





# Texas DPS 2013 Convictions



CHL holders represent less than one-third of one percent of the total convictions in Texas; i.e., 0.3%.

■ Total Convictions ■ Convictions of CHL Holders



# Moving Ahead

- Do we have locations that should be permanently posted to prohibit carrying a handgun? (e.g., stadium, coliseum, health center, etc.)? Must post signs.
- Do we need a process to temporarily prohibit handguns at a location based upon a function (e.g., parties, alcohol, past issues, etc.)?
- We will need temporary signs to post.
- Who do we designate the authority to make this decision?



# Moving Ahead (continued)

- Are we going to provide a location in each residence hall to store handguns or a central location? Consider the cost, staffing and training requirements this would require.
- Can we assign CHL holders to single occupancy rooms and provide a hotel safe? Cost around \$100.
- Given the fire safety concerns, we may want to consider adding hotel safes to each room at some point.





Thank you.