



# Logon to SPOL

SPOL is a **web-based** application, so you can logon to SPOL from work, home, or any other location where you can get to the internet. However, it's possible that your institution's version of SPOL is located behind the firewall, which would require you to first logon to your network before accessing SPOL.



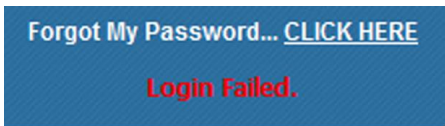
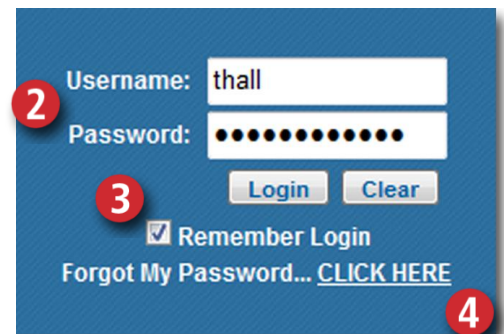
<https://untdallas.strategicplanningonline.com/>

SPOL Address: spolnet/

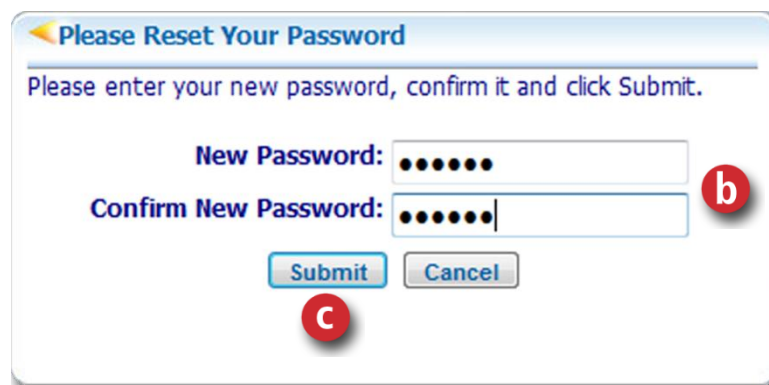
Username: \_\_\_\_\_

Password: \_\_\_\_\_

1. Type the SPOL web address (URL) into the address field of your web browser to navigate to **the SPOL Logon page**
2. From the SPOL Logon page, enter your **Username** and **Password**, and then click the **<Logon>** button.
3. If you click the **"Remember Login"** checkbox on the Logon page, your Username and Password will be saved to your computer
4. If your logon fails, you can reset your password by clicking the **"Forgot My Password... CLICK HERE"** link



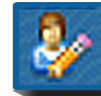
- a. SPOL will send an email to your college/university email account, providing you with a **temporary password**
- b. Return to the Logon page and logon using your normal Username and temporary Password; the system will prompt you to **create a new Password** and to verify it by entering it a second time
- c. Click the **<Submit>** button to reset Password and logon to SPOL.



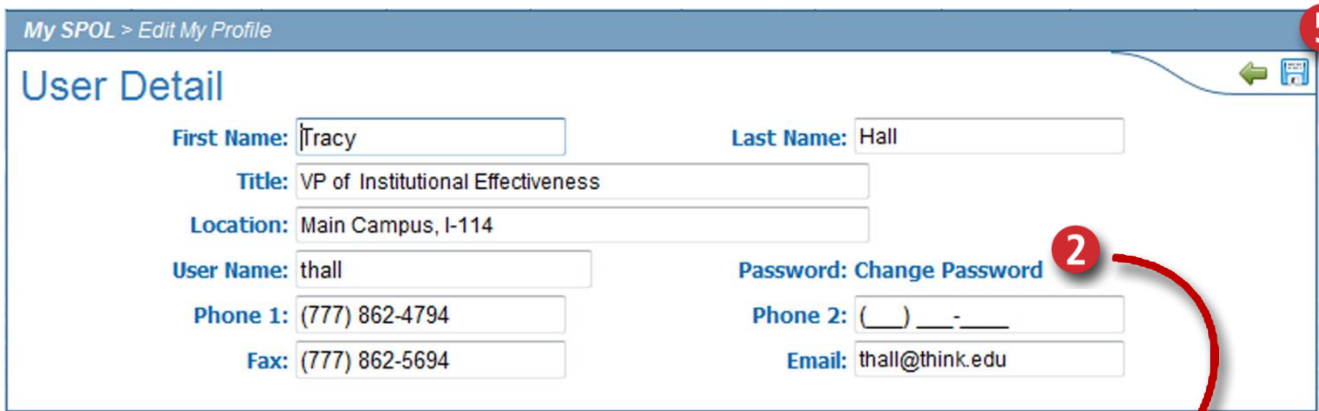


## CHANGING YOUR PASSWORD AND OTHER IDENTIFYING INFORMATION:

You can change your Password, along with other identifying information, from any page within SPOL via the SPOL Header.



1. Click on the **icon** to the immediate right of your name on the header to navigate to **the User Detail page**
2. Click on the **“Change Password”** label to open the **<Password>** field



3. Mouse over the question-mark icon to view any **Password Requirements**, such as minimum/maximum length, letters, numbers, and special characters



4. Type your new **Password** into the field
5. Click the **<Save>** icon in the icon tray at the upper right of the page
6. While the User Detail page is open, you can change other identifying information, including:
  - a. First Name and Last Name (required fields)
  - b. Title (required field)
  - c. Location
  - d. Username (required field)
  - e. Primary, Secondary, and Fax Phone Numbers
  - f. Email Address (required field)

**TIP:** If you are automatically logged into SPOL after logging onto your network, that means that your institution uses **single sign-on**. If you have problems logging in to SPOL, you should not reset your password yourself. Instead, contact your System Administrator or network administrator for assistance.



The My SPOL page is designed to give users **quick access** to the records that matter to them. This home page is broken down into the functional modules of SPOL: 1) Planning, 2) Budget, 3) Assessment, and 4) Accreditation.

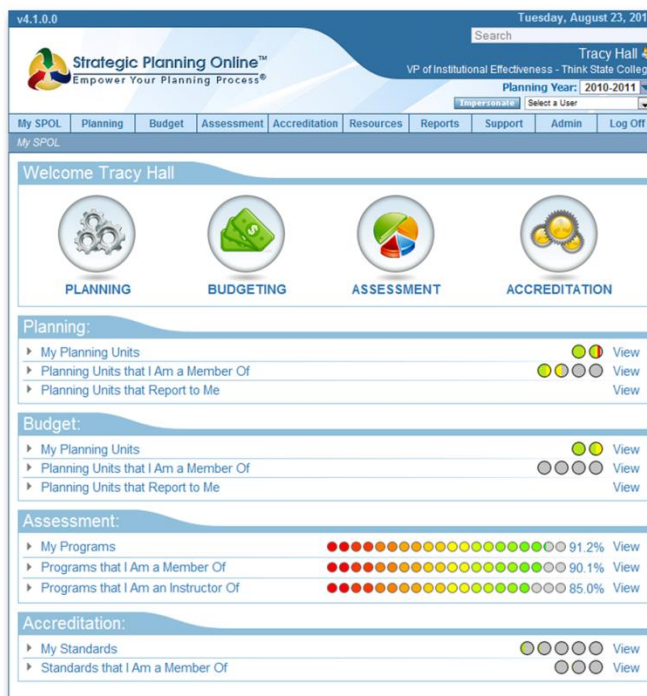
Within each functional module, records are organized for the user by the **role** he plays:

1. **Unit Manager or Program Manager**
2. **Member** of a Planning Unit or Program
3. **Instructor** within a Program
4. Unit Manager with Planning Units **reporting** to his Planning Units.

➤ Click on a role within a module to expand the section and reveal the **Planning Units** or **Programs** associated with that role.

➤ Click on a Planning Unit or Program to expand further and reveal the associated records, including:

- Planning **Objectives**
- **Budget Accounts**
- Assessment **Outcomes**, Measures, Rubrics, and Measurements
- Accreditation Cycles and **Standards**.



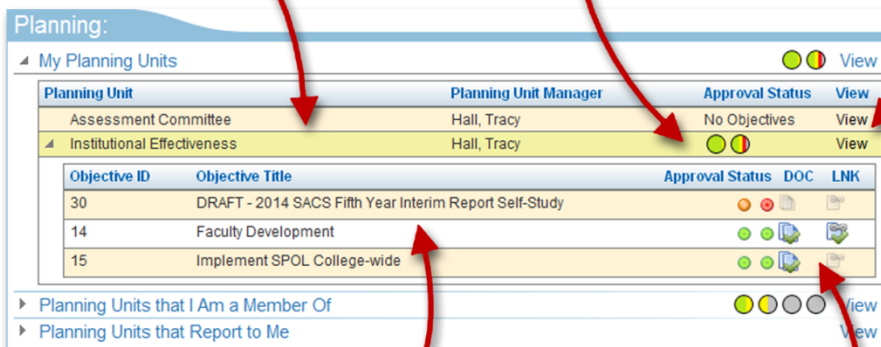
## PLANNING:

➤ **Planning Units** are identified by *PU Name* and *Unit Manager*.

➤ PUs with Objectives will have a **roll-up status indicator** to show the accumulated approval status of Objectives for that unit.

➤ Click the **<View>** link to navigate to the homepage for the Planning Unit.

➤ Click anywhere else on the PU record to expand and view its **Objectives**.



- Approval status indicators appear for each Objective:
  - Green = approved
  - Yellow = awaiting approval
  - Orange = in review
  - Red = rejected
  - Grey = no action taken

➤ Mouse over the indicators to see the approval details.

➤ **Objectives** are identified by *Objective ID* and *Objective Title*.

➤ Icons appear to indicate when **documents** and **internet links** have been added to Objectives.

➤ Double-click on an Objective to navigate to the **Objective Details** page.



## BUDGET:

**Budget:**

My Planning Units View

Planning Unit	Planning Unit Manager	Approval Status	View
Assessment Committee	Hall, Tracy	No Budget Accounts	View
Institutional Effectiveness	Hall, Tracy	<span>●●</span>	View

Account Number	Budget Account Title	Approval Status	% Change	\$ Change
14801000-B-10	Institutional Effectiveness	<span>●●</span>	2%	\$530
14601000-A-10	VP of Institutional Effectiveness	<span>●●</span>	4%	\$620

Planning Units that I Am a Member Of View

Planning Units that Report to Me View

➤ **Budget Accounts** are identified by *Account Number* and *Account Title*.

➤ Budget status indicators include the **% Change** and **\$ Change**, which compare the *Proposed Budget* to the current year *Initial Budget*.

➤ Double-click on a Budget Account to navigate to the **Budget Details** page.

## ASSESSMENT:

➤ Click on a **Program** to expand and display the associated **Outcomes**. Continue to click to drill down further to associated **Measures, Rubrics, and Measurements**.

➤ Click on the **<View>** button next to a Program, Outcome, Measure, Rubric, or Measurement to navigate to the **Detail Page**.

➤ Status indicators show the **Effectiveness Score** at each level.

➤ Click the **<Add Measurement>** button to add outcome data.

**Assessment:**

My Programs 91.2% View

Programs Add

- Institutional Effectiveness 91% View
  - Outcomes Add
    - Grant Writing Educational Series: Session Evaluations 95% View

Each session will score an average of 4 on a 5-point scale on participant evaluations.

      - Measures Add
        - EDP Session Evaluation 95% View

Standard evaluation form used for all EDP offerings.

          - Rubrics Add
            - EDP Session Evaluation 95% View

Rubric Type: Lykert Scale Survey/Evaluation      Rubric Result Type: Quantitative Analysis

Standard evaluation form used for all EDP offerings.

              - Measurements Add

Projected Score: 100%      Actual Score: 96%      Weighted Score: 96% View

Date: 09/18/2010

Entered By: Hall, Tracy

Notes: Session 1: Beginning the Grant Writing Process was held in T-110, with Erin Bell, Yvette Murray, and Maureen Capp facilitating. The session was recorded for SU-TV. 23 people were in attendance. 3 indicated interest in the CGWC.

Programs that I Am a Member Of 90.1% View

Programs that I Am an Instructor Of 85.0% View

## ACCREDITATION:

**Accreditation:**

My Standards View

Source Source Manager Approval Status

- Southern Association of Colleges and Schools, Commission on Colleges: "The Principles of Accreditation" Hall, Tracy
  - Accreditation Cycle Approval Status
    - 2014 SACS Reaffirmation
      - Section Approval Status
        - 2 - CORE REQUIREMENTS
          - Standard Approval Status NAR DOC LNK CHK %
            - 2.1 Degree-granting Authority ●● ● ● ● ● 0%
            - 2.4 Institutional Mission ●● ● ● ● ● 0%
            - 2.5 Institutional Effectiveness ●● ● ● ● ● 100%
            - 2.12 Quality Enhancement Plan ●● ● ● ● ● 0%

3 - COMPREHENSIVE STANDARDS

4 - FEDERAL REQUIREMENTS

2019 Fifth Year Interim Report

Think State College Strategic Plan, 2009-2014 Hall, Tracy

Standards that I Am a Member Of View

➤ Click on an accreditation **Source** to view the self-study **Cycles**. Click on a Cycle to expand and display the **Standards** organized by **Sections**.

➤ The Standards displayed are those for which one or more of your Planning Units has been **assigned a role**.

➤ **Status indicators** show the approval status for each Standard, as well as the self-reported **% Complete**.

➤ Mouse over the status indicators to see the **primary Planning Unit** assigned to each role.

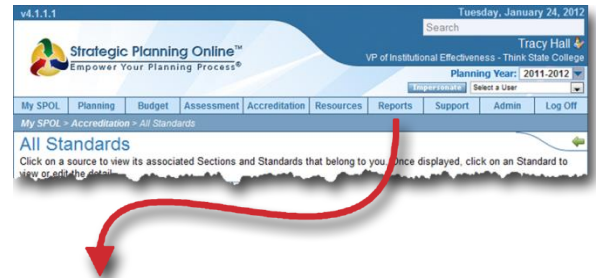
➤ Icons appear to indicate when **narrative**, **documents**, and **internet links** have been added to Standards, and when Standards have been checked out by a User.



SPOL uses common conventions throughout the system to ensure ease of navigation and use. It will be helpful to familiarize yourself with these common conventions. User instructions on specific topics may not include the basic navigational steps that you will find in this article, but will assume that you are familiar with system functionality covered here.

## NAVIGATION BAR

The **Navigation Bar** is available at the top of every SPOL page, just below the SPOL Header. The buttons on the Navigation Bar correspond with the **SPOL modules**; only those modules for which you have permissions will be displayed. Click on one of the buttons to navigate to the **module Homepage**.



## HOMEPAGES

Each SPOL module has its own **Homepage**; click on the appropriate button on the **Navigation Bar** to access the homepage. The Homepage will provide you with a variety of selections to interact with records in the module in three basic ways: 1) **View** (which may allow you to **Edit** from there); 2) **Add**; and 3) **Search**.

## BREADCRUMBS

Just below the **Navigation Bar** on every page is a blue banner that contains navigational **“Breadcrumbs.”** The message on this banner will tell you the steps followed to get you to the **current page**. The format of the Breadcrumbs is [First Page Name] > [Second Page Name] > [X Page Name] > [Current Page Name]. You click on a **Page Name** in the Breadcrumbs to navigate directly to that page.



## ICON TRAY

An **Icon Tray** appears at the upper right of most pages in SPOL, just below the **Breadcrumbs** banner. The Icon Tray contains the **valid actions** available to you for this page, and will remain at the upper right of the page as you scroll vertically. You will find some combination of the following icons/actions in the Icon Tray:



**Back:** Click the Back icon to navigate back to the previous page. For best results use this Back button, rather than the back button on your browser.



**Print:** Click the **Print** icon to view the **Reports** available from the page, based upon the record displayed. The **“More Reports”** options will take you to the **SPOL Reports Homepage**.



**Save:** Click this icon to **Save** the current record. Many pages – including the Objective, Standard, Budget, and Outcome detail pages – display in “read” view, and require you to open a data store in “edit” view to add and edit page data. Once that data store is saved and closed, there is no need to save the overall page. Consequently, you will not see this icon unless the record should be saved before navigating away from it.



**Check Out/In:** Click this icon to **Check-Out** the record, **enabling edit-mode**. While the record is checked out by you, no other User can check it out. Not all records require check-out before editing; the icon will be displayed only when required. If the edit buttons on the record do not activate upon clicking the Check-Out icon, you might not have **permission to edit** this record.

Once you have checked out the record, click the icon again to **check the record back in**. If you attempt to navigate away from the page with the record checked out, you will be asked if you would like to check it back in before leaving the page.



**Show/Hide Supporting Data:** This icon appears if the page you're on has been formatted to collapse/expand to hide/display some data stores. If the arrow on the icon points down, click on it to display hidden data. If the icon points up, the page can be collapsed to hide some data.



**Add Record:** Click the **Add Record** icon if you want to **create a new record** of the type that you are currently on. This is not a common function and requires specific user permissions.



**Delete Record:** Click the **Delete Record** icon if you want to **remove the record** completely and permanently. The Delete action requires specific user permissions, and it should be used with care.

## HEADER BARS & BUTTONS

1. Many pages in SPOL organize a broad assortment of data and records onto a single page. These pages are broken into multiple sections, areas, or window panes, commonly called **Data Stores**.
2. Most Data Stores display a **Header Bar** above the records, which provides the **name** of the Data Store or the records it contains.
3. If **actions** can be taken for a Data Store, you will see **buttons** displayed at the **far right** end of the Header Row. These buttons may be on the Header Bar or just above the Data Store.
4. If buttons are **grayed-out**, they will not respond to your click. This may be because:
  - You need to **check out** the record to activate the buttons
  - You don't have the appropriate **user permissions** for the action on this type of record
  - You don't have the proper membership/role for the action on the record
  - The record is be locked due to an approval or overall lock-out for the module
5. If **no buttons** appear for a Data Store, the records contained flow from somewhere else in SPOL and cannot be acted upon from this page.

The screenshot shows a record titled "Objective Description" with a status of "Completed" and a purpose of "3 Unit/Department Plan". Below the description are three sections: "Institutional Goals", "Objective Types", and "Planning Priorities". Each section has an "Add/Edit" button. At the bottom, there is a "Tasks" section with "Add", "Edit", and "Expand All" buttons. The interface also includes a top right corner with "Add", "Edit", and "Delete" buttons.



# SPOL Modules and Your Institution

SPOL is a comprehensive, integrated system to support institutional effectiveness, specifically strategic planning, outcomes assessment (including student learning outcomes), program review, budget planning, and accreditation compliance and reporting. SPOL does not prescribe a specific mode of operation, but is flexible and robust enough to support an infinite number of business models. Our goal is to set up the operating framework of SPOL so that it supports the operating environment, procedures, and protocols of your college or university.

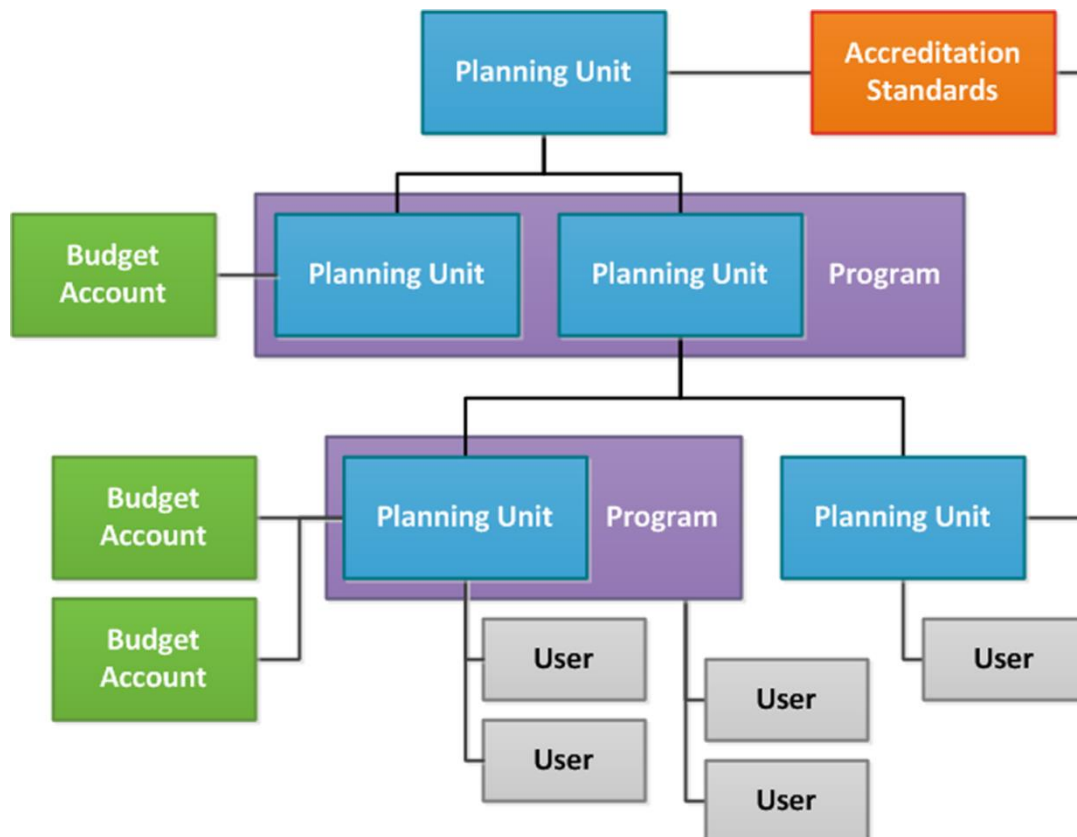
## PRIMARY FRAMEWORKS OR ENTITIES:

We use four basic frameworks to represent your organization from the perspective of individuals, departments, cost centers, and activities or initiatives. These frameworks are:

1. **Users** – individuals who will log on to SPOL to perform work.
2. **Planning Units** – offices, department, committees, and other operating units within the institution.
3. **Budget Accounts** – the individual department-level budgets that fund the operations of the institution.
4. **Programs** – planning units and/or users working collectively on activities or initiatives that support the college or university mission.

A fifth framework, Accreditation Standards, represents best practices formulated from within or outside of your organization that impact the focus of unit planning, assessment, and budget allocations.

The figure below illustrates how these five frameworks fit together.





[Home](#) > [Planning](#) > Create a New Objective

# Create a New Objective

LAST UPDATED: MAY 26, 2014 11:21PM EDT

## Creating a New Objective

Objectives are the primary template in the Planning Module and represent the records for which all planning activity is executed. Objective creation should be guided by a basic set of principles known as "SMART".

1. Specific - indicate a specific project or specific area for improvement
2. Measurable - progress can be quantified or measured
3. Attainable/Achievable - the project is not out of reach or beyond the capacity of the institution
4. Results-driven - is guided by and created with the purpose of yielding results
5. Time-limited - is grounded within a time frame, not open-ended

The option to create Objectives is only available when the logged in user is assigned as a manager or member of a Planning Unit. To create a new Objective in SPOL, select **Planning** from the *navigation bar* at the top of the page and select **Create a New Objective** on the Planning Homepage. (Your institution may be using different terminology. The Create a New Objective option can be identified by the target over a webpage icon.)



**Create a New  
Objective**

Open up a blank Objective page and enter  
the relevant data to create a new Objective

The Create a New Objective page will open, displaying the following fields:



## Create a New Objective



Objective ID: **1** Objective Title:  ERP ID: Create On Save

Planning Unit: **2**  Original Planning Year: **3**  Multi-Year Objective: **4**  Yes  No

Objective Purpose: **5**  Objective Status: **6**

Objective Description:  Plain Text  HTML

**7** Edit

<div style="border: 1px solid #ccc; padding: 2px;">Clipboard</div> <p>Cut Copy Paste Print</p>	<div style="border: 1px solid #ccc; padding: 2px;">Editing</div> <p>ABC Spell Check</p>	<div style="border: 1px solid #ccc; padding: 2px;">Font</div> <p>Font Name size Paragraph Style <b>B</b> <i>I</i> <u>U</u> abe x<sup>2</sup> x<sub>2</sub></p>	<div style="border: 1px solid #ccc; padding: 2px;">Paragraph</div> <p>Text alignment and bullet point icons</p>
--	---	--	---

Design HTML Preview
Words: 0 Characters: 0

**8** Institutional Goals [Select](#)  
There are no records to display

**9** Objective Types [Select](#)  
There are no records to display

**10** Planning Priorities [Select](#)  
There are no records to display

1. **Objective Title** - the short description of the Objective
2. **Planning Unit** - the department that will carry out the Objective
3. **Original Planning Year** - indicates the year that the objective will begin. Original Planning Year can only be selected from the dropdown menu when the Objective is first created and will associate the newly created Objective to the indicated Planning Year.
4. **Multi-Year Objective** - indicates the life span of an Objective.

- **Multi-Year = No (Single-Year Objective)** - indicates an Objective that requires one year to complete or begins and ends within a single academic year. When copied to a new Planning Year, Single-Year Objectives are treated as new Objective (given a new Objective ID) only bring with it the data selected when making the copy. (See the [Copy Objective Data](#) article for more information.)
  - **Multi-Year = Yes (Multi-Year Objective)** indicates an Objective that requires multiple years to complete (begins and ends over multiple academic years). Multi-Year Objectives are not copied to new Planning Years but rather additional Planning Years are associated to a Multi-Year Objective. When multiple years are associated to an Objective, the Objective ID, Objective Title, Objective Description, Associated Goals, and Tasks are maintained from year to year but the remaining details (i.e., Status and Results) are reset for the new year.
5. **Objective Purpose** - from the dropdown menu select the primary purpose for which the Objective has been created.
  6. **Objective Status** - from the dropdown menu indicate the current status of the newly created Objective
  7. **Objective Description** - the full description of the Objective.
  8. **Institutional Goals** (optional) - if known, select a goal or goals that the Objective is tied to. (Your institution may be using different terminology. The **Institutional Goals** option is identified as the first listed option on the Create a New Objective page.)
  9. **Objective Types** - (optional) - if known, select a type or types that the Objective is tied to. (Your institution may be using different terminology. The **Objective Types** option is identified as the second listed option on the Create a New Objective page.)
  10. **Planning Priorities** - (optional) - if known, select a priority or priorities that the Objective is tied to. (Your institution may be using different terminology. The **Planning Priorities** option is identified as the third listed option on the Create a New Objective page.)

Select the **Save** icon (blue diskette) at the upper right of the page and you will then navigate to the **Objective Details** page. (See the [Objective Details](#) article for more information.)

Customer service software powered by Desk.com



[Home](#) > [Planning](#) > The Objective Detail Page

## The Objective Detail Page

LAST UPDATED: OCT 29, 2014 08:51PM EDT

The **Objective Detail** page is the primary template in the Planning module and represents the page for which most planning activity is established and executed. Once an Objective has been created and saved, the user will land on the Objective Details page. ([See Create a New Objective article here](#))

On the **Objective Details** page, users will provide the details associated with their Objective(s). From reporting out status and results to requesting financial and/or personnel resources, the Objective Details page is home to the objective's specifics.

The Objective Details page is customizable so the information contained in this article is dependent on the data stores activated, the layout selected, and the permissions given to you, by your institution. The intended use of each data store is also dependent on your institutions methodology. With all data stores activated, default labels used, and intended functionality assumed, the Objective Details page includes the following:

The screenshot shows the 'Objective Details' page for 'Information Literacy Workshops'. The page is in a 'Draft' state. Key elements highlighted with numbered callouts are:

- 1**: Objective Title: Information Literacy Workshops
- 2**: Planning Unit Code and Title: 45000 - Learning Resources
- 3**: Planning Unit Manager Name: Unit Manager: Alvarez, Linda
- 4**: Planning Unit Manager Email: Email Unit Manager: [Send Email button]
- 5**: Approval Area: -- DRAFT --
- 6**: Approval Notes: [Approval Notes field]
- 7**: Objective Description: Objective Description section header
- 8**: Status: Status: In Progress
- 9**: Objective Purpose: Objective Purpose: Faculty/Academic Division Plan
- 10**: Objective Description Text: Provide information literacy instruction through weekly workshops and other student-focused events. Workshops will provide students with a standing day/time to receive assistance with research related to class papers, presentations, and other projects. Related events will provide topical information to assist students with idea generation and topic identification for class papers, presentations, and projects.

- Objective Title** - The “nutshell” version of the objective - short and descriptive
- Planning Unit Code and Title** - The title and ID of the Unit or department for which the Objective belongs.
- Planning Unit Manager Name** - The name of the unit or department manager.
- Planning Unit Manager Email** - The link will launch a New Email window in **Outlook** with the Unit Managers email populated in the 'To' field.
- Approval Area** - The approval area of the Objective Details page offers visual aids and options associated with Objective Approvals. Depending on the current approved state of the Objective, the options and display within the area will change. The Approval Options dropdown menu is where approval actions are selected and applied. The Approval Status image will display the approved state of the Objective.


- **Objectives in Draft** - When Objectives are in "Draft", the dropdown menu will display two options; "Approve Objective" and "View Approval History". If you are a Planning Unit Member, submitting an approval will notify the Planning Unit Manager that the Objective is ready for their review. Planning Unit Manager approvals will route to the next Planning Unit in the approval chain.
  - **Objectives Awaiting Approval** - At the second, or any subsequent levels of the approval chain, the approval status indicator will display the message Objectives Awaiting Approval. The Approval Options dropdown menu will display the options; "Approve Objective" "Reject Objective" and "View Approval History". If you are Planning Unit Manager, approvals will route to the next Planning Unit in the approval chain and rejections will route back to the previous Planning Unit in the chain. Objective Unit Managers and System Administrators also have the ability to Remove All Approvals, resetting the Objective back to Draft. When approval actions are applied, an automatic system generated email will be sent to the appropriate manager in the approval chain.
  - **Approval Status** - The Approval Status area displays the current state of the Objective. Messages such as, Draft, Awaiting Approval, or Approved will be displayed in this area. The approval status image however is accompanied by colored indicators notifying users as to where the Objective is in the approval chain. Green indicates that the Objective has passed through approval, Orange indicates that the Objective is pending approval by either a Unit Member or Unit Manager (Member approvals will route to the Unit's Manager). Yellow indicates that the Objective is pending approval by a Unit Manager. Red indicates that the Objective has been Rejected or Passed back for further work.
6. **Objective Approval Notes** - Notes can be added to any approval action and previously added approval notes can be viewed from the Objective Approval Notes dropdown. When an approval action is applied the Notes text box will appear. When the Reject Objective action is applied, a Note will be required.
7. **Objective ID** - The unique identifier given to the Objective. When the Objective is "Multi-year", the Objective ID will remain the same across multiple years. When the Objective is Single-year (Multi-year = No), the Objective ID will be unique regardless of the Objective's content or the year.
8. **Objective Status** - The current state of the Objective. The Objective Status dropdown is populated with institution created status options.
9. **Objective Purpose** - What kind of objective is it? What purpose does it serve? The Objective Purpose is the primary category for which the objective was created or supports. The Objective Purpose dropdown menu is populated with institution created purpose options.
10. **Objective Description** - The full description of the objective. (See Create a New Objective article for more information)

Planning Years <span style="color:red">1</span>			<a href="#">Edit Planning Years</a>	
Planning Year	Start Date	End Date		
<input type="radio"/> 2012-2013	07/01/2012	06/30/2013		
<input checked="" type="radio"/> 2013-2014 - (Current)	07/01/2013	06/30/2014		
<input type="radio"/> 2014-2015	07/01/2014	06/30/2015		
<input type="radio"/> 2015-2016	07/01/2015	06/30/2016		

Institutional Goals <span style="color:red">2</span>		Objective Types <span style="color:red">3</span>		Planning Priorities <span style="color:red">4</span>	
<a href="#">Add/Edit</a>		<a href="#">Add/Edit</a>		<a href="#">Add/Edit</a>	
<input checked="" type="radio"/> Student Access and Success Access to Learning Educational Programs		<input checked="" type="radio"/> Student Outputs: Retention		<input checked="" type="radio"/> Safety & Security Strategic Partnerships	

Tasks <span style="color:red">5</span>				<a href="#">Add</a> <a href="#">Edit</a> <a href="#">Expand All</a>	
 Create format for weekly information literacy workshops to be held beginning Fall 2013. Workshops will be three hours long. Library faculty and staff will be located throughout the open computer lab to provide assistance with research. Short presentation topics will					
<b>Start Date:</b> 04/01/2013	<b>Type:</b> Development	<b>Priority:</b> High	<b>Budget:</b> \$3,875		
<b>Due Date:</b> 05/03/2013	<b>Completion Date:</b> 05/01/2013	<b>Status:</b> Completed	<a href="#">More &gt;&gt;</a>		
Host inaugural information literacy workshop two weeks after the end of drop-and-add. Event should be heavily publicized via on-campus posters, flyers in the orientation packets, announcements by instructors, and give-away (e.g., bookmark) with textbook purchases.					
<b>Start Date:</b> 06/07/2013	<b>Type:</b> Implementation	<b>Priority:</b> High	<b>Budget:</b> \$3,000		
<b>Due Date:</b> 07/01/2013	<b>Completion Date:</b> 07/05/2013	<b>Status:</b> Completed	<a href="#">More &gt;&gt;</a>		
Create and administer pre- and post- surveys to students to gauge the degree to which students' research skills were improved and the quality of their resulting projects was enhanced. Surveys will be completed on a volunteer basis. A give-away should increase					
<b>Start Date:</b> 10/01/2013	<b>Type:</b> Research/Discovery	<b>Priority:</b> High	<b>Budget:</b> \$1,149		
<b>Due Date:</b> 12/16/2013	<b>Completion Date:</b>	<b>Status:</b> Ongoing	<a href="#">More &gt;&gt;</a>		
Develop a feedback mechanism with faculty/departments who are assessing the Gen Ed outcomes on Oral Communication, Written Communication, and Information Literacy to determine if outcomes are improving with regard to student identification and use of					
<b>Start Date:</b> 12/02/2013	<b>Type:</b> Research/Discovery	<b>Priority:</b> High	<b>Budget:</b> \$300		
<b>Due Date:</b> 01/31/2014	<b>Completion Date:</b>	<b>Status:</b> Ongoing	<a href="#">More &gt;&gt;</a>		
			<b>Total Objective Budget: \$8,324</b>		

1. **Planning Years** - In most cases, an Objective is created as Single-year (Multi-year = No) which only displays the single year attached to the Objective. There are circumstances and/or institutional methodologies however where Objectives are Multi-year (Multi-year = Yes).


- **Multi-year Objectives** - In concept, Multi-year Objectives are created when a single project requires multiple years to complete. (e.g., construction projects, campus-wide technology enhancements, etc...) There are however instances where institutions represent continuous improvement by extending the life of a single Objective across multiple years to provide evidence of progress. In functionality, a Multi-year objective retains the same Objective Title, Objective ID, and Objective Description. Tasks will also continue across multiple years but all other data stores will remaining specific to a Planning Year.

2. **Institutional Goals** - Which goal(s) or part of the strategic plan does the objective support or advance? The Institutional Goals data store is typically where you institution's Strategic Plan, Core Themes, or Strategic Initiatives are represented. The data store is multi-select, which allows users to select a primary goal that the Objective supports along with any additional goals that the Objective advances.


3. **Objective Types** - There may be a number of underlying reasons for this objective... which reasons best fit? Objective Types are often customized with a different label by the institution but are typically used to further categorized Objectives for reporting purposes.

4. **Planning Priorities** - Does this objective support an institutional priority? Planning Priorities are typically populated by the institution with priority initiatives, special projects, or institutional priorities. The data store is equipped to further categorized Objectives for reporting purposes.


5. **Tasks** - List the many things that must be accomplished to achieve the overall objective. These might be steps to follow in an action plan or more finely-defined actions that add up to the overall objective. ([See article on Tasks for more information.](#))

 **1** **Intended Results** + Add Edit


Date	Priority/Strategy
10/18/2011	1. Students will self-report that their research skills improved and their coursework was enhanced as a result of the workshops
10/18/2011	2. Student outcomes with regard to use of sources will improve by 4%
10/18/2011	3. Each workshop will draw at least 50 students

 **2** **Assessment Measures** + Add Edit


Date	Description
10/18/2011	1. Student survey of improvement in information literacy
10/18/2011	2. Gen Ed Outcomes for Written Communication, Oral Communication, and Information Literacy, as reported by academic departments
10/18/2011	3. Workshop ID card swipes

 **3** **Status Reports** + Add Edit

Date	Description
10/18/2011	The third planning meeting was held today. Excitement is very high among the faculty for this initiative. The Office of Institutional Effectiveness is looking for a grant funding source for education materials and other costs. We also plan to approach the Foundation with the idea of having the series named for a donor.
09/12/2011	The English faculty have reported that poor use of references is a trouble area for students in demonstrating Written Communication learning outcomes. They are partnering with other academic departments and the libraries to provide additional support to students in information literacy.


 **4** **Actual Results** + Add Edit

Date	Description
10/01/2011	Preliminary surveys have shown that student confidence and sophistication in their information literacy abilities could be improved: 1) Number of search engines used while doing research = average 1.2 (primarily Google) 2) Correct ranking of URL domains for content confidence = 65% 3) Confidence in ability to correctly cite references = 58%


 **5** **Use of Results** + Add Edit

Date	Description
10/01/2011	Baseline data show that students must be exposed to alternative search engines, search strings, indicators of source reliability, library databases, and citation resources. These topics will be covered early and frequently in the information portion of the workshops.


- Intended Results** - List the results you want to achieve both from the objective overall, and from specific tasks or strategies.
- Assessment Measures** - Describe the measurement tools that you will use and/or methodologies you will employ to gather data. This might also include existing data sources.
- Status Reports** - Throughout a planning cycle, Status Reports are used to describe the overall status of the Objective's progress.
- Actual Reports** - List the results that were achieved both from the objective overall, and from specific tasks or strategies.
- Use of Results** - List the differences observed between the Intended and Actual results both from the objective overall, and from specific tasks or strategies.



 **1** + Add Edit


Date	Description
05/19/2014	Student surveys suggest a few areas where the workshops could be improved. The workshop format needs updating to address the student feedback.

 **2** + Add Edit

Date	Description
05/19/2013	Student surveys suggest that the Information Literacy Workshops are a marketable benefit for students and represents a strength for the institution. While the format requires some minor alterations and technological advancements present a threat to sustained student attendance, the learning benefit for students outweighs the cost of resources and time.

 **3** View + Add Remove

File Name	File Type	File Size	File Date
 Agenda IM AC.doc	Microsoft Word Document	66.5 KB	09/22/2011 03:24 PM
 SP2011-LibrarySatisfactionSurvey.xlsx	Microsoft Excel Document	7.64 KB	09/23/2012 03:37 PM

 **4** View + Add Edit Remove

Link (Double Click to View)	URL
Inst Research Page	<a href="http://www.amazon.com">http://www.amazon.com</a>

1. **Gap Analysis** - The Gap Analysis data store is used to associate specific results to each other for the purpose of creating individualized action plans. The data store allows users to select a specific Intended Result, Actual Result, and Use of Result with text areas for Gap Analysis and Action Plan.
2. **SWOT Analysis** - This objective may flow from an analysis of your internal strengths and weaknesses and external opportunities and threats. If so, document these findings in the SWOT Analysis framework.
3. **Document Management** - Provides access to the Objective Document Repository. Documents are first uploaded to the repository then assigned to the appropriate Objective. The institution will either establish the directory structure for you or provide instruction for creating directories. ([For more information on the Document Repository, see article here.](#))
4. **Link Management** - Provides access to the Objective Link Repository. Web Links are first created in the repository then assigned to the appropriate Objective. The institution will either establish the directory structure for you or provide instruction for creating directories. The link repository functions similarly to the document repository. For more information on creating directories, adding links, and assigning links to Objectives, please see the document repository article.







# SPOL Support



Welcome, H.D. Stearman [My Cases](#)

[Home](#) > [Planning](#) > Tasks

## Tasks

LAST UPDATED: JUN 16, 2014 12:19PM EDT

Tasks is where we define what actions, budgetary needs, and personnel resources are necessary for meeting an Objective.

**Planning Unit**

1 English, Communications, & Modern Languages

Objective ID	Objective Title
62	QEP 1: Writing Intensive Courses
64	QEP 3: TSC Writing Grammar Workbook/Handbook

**Tasks** Add Edit Expand All

YEAR 1: Training for TSC Writing Center Staff on the E-tutoring programs

Start Date: Due Date: 08/15/2012 Task Type: Not Set Completion Date: Priority: High Status: Pending Budget: \$55,500 << Less

2

### ADDING OR EDITING TASKS

1. Select the Planning tab and then [View My Objectives](#). Expand the Planning Unit to display your Objectives and double-click to edit an objective from the list.
2. Scroll down the Objective Details page to the Task area. In the list state, from the Objective Details page, individual Tasks will display the start date, the due date, the completion date, the task type, the priority, the status, the description, and the requested budget associated with the Task. To create a new task, select "Add". To edit an existing Task, double-click or click on a Task and select "Edit".

The window will open to the **Task Detail** area where users can add or edit task information. The options available to you in the Task Detail window will depend on a few factors:

- a. Has the initial Task information been established and saved? (Remarks, View Budget, and View Assignment options only appear once the Task details have been established and saved.)
- b. What permissions have been given to you by your institution? (Create, Read, Write, and Delete permissions exist for many of the options under Tasks. These options can be found under Admin > Permission Groups.)

c. Is the Objective Purpose "Budgetable"? (A "Budgetable" option exists at the individual Objective Purpose record that enables the budget request button and form under Tasks. The option can be found under Admin > Objective Purpose.)

<b>Start Date:</b> 1	<b>Type:</b> 2	<b>Priority Level:</b> 3	<b>Order:</b> 4
04/01/2013	Development	High	1
<b>Date Due:</b> 5	<b>Completed Date:</b> 6	<b>Status:</b> 7	<b>Budget:</b> 8
05/03/2013	05/01/2013	Completed	\$3,875
<b>Description:</b> 9			
Create format for weekly information literacy workshops to be held beginning Fall 2013. Workshops will be three hours long. Library faculty and staff will be located throughout the open computer lab to provide assistance with research. Short presentation topics will be covered during the workshop, repeated once per hour, with a different topic each week.			
<b>Remarks</b> 10			
11 + Add Edit			
<b>Date</b>	<b>Entered By</b>	<b>Remark</b>	
05/06/2013	Alvarez, Linda	Committee approved	
05/01/2013	Alvarez, Linda	Format complete, pending committee approval	
1			
12 View Budget		13 View Assignments	
		14 Save Delete Close	

\*Indicates Required Field

1. **Start Date** - The date that the Task or Action begins
2. **Task Type** - A list of any categories that your institution has established for Tasks. Used primarily for reporting purposes, the Task Type field is not a required. It could be that your institution is not using this field in which case it will either be empty or only have one option to select (e.g., Not Used).
3. **\*Priority Level** - The overall priority of the Task. System default entries are High, Medium, and Low but additional priority levels can be added by navigating to Admin > Priority Levels situated under System Data.
4. **Order** - The order in which the Tasks are or have been performed. The order indicated will dictate its listed order on the Objective Details page.
5. **Due Date** - The date that the Task or Action is due.
6. **Completed Date** - The date that the Task or Action was completed.
7. **\*Status** - The overall status of the Task. System default entries are Completed, Discontinued, In Progress, Ongoing, and Pending but additional Task Status can be added by navigating to Admin > Task Status situated under Planning.
8. **Budget (Total)** - The total budget amount requested for the Task.
9. **\*Description** - The full description of the Task.
10. **Remarks** - Any notes, updates, or requirements associated with the Task. Multiple remark entries can be created for each Task.
11. **Add / Edit (Remarks)** - To create a new remark, select "Add". To edit an existing Task, double-click or click on an existing remark and select "Edit".
12. **View Budget** - The designated area for budget requests. When selected, a list of the current budget requests associated with the Task will load along with a button to add new requests. The Task's details must first be established and saved for the Budget option to appear. Additionally, the

Objective Purpose must be “Budgetable” for the budget option to appear. (For more information on creating Enhanced Budget Requests, please see article here.)

13. **View Assignments** - The designated area for Task assignments. When selected, a list of the current assignments associated with the Task will load along with a button to add new assignments. The Task's details must first be established and saved for the Assignment option to appear. (For more information on creating Task Assignments, please see article here.)

14. **Save/Delete/Close (Task)** - The buttons that save, delete and/or close the Task. (The close option will not update the Task information.) For new Tasks, selecting save once will display the View Budgets, View Assignments, and Remarks options.

Customer service software powered by Desk.com

[Home](#) > [Planning](#) > Approve My Objectives

# Approve My Objectives

LAST UPDATED: JUN 18, 2014 06:28PM EDT

When Objectives are present and pending approval by the logged in user, the Approve My Objectives option will appear on the Planning Homepage. From the Approve My Objectives page, users can view a list of all Objectives pending their approval, provide notes, and mass approve or reject the Objectives from a single page. As with individual approvals, any approval action made from the page will route the approval and a system email to the appropriate user in the approval chain. Only Objectives pending approval are listed on the page and the Approve My Objectives option will only appear on the Planning Homepage when Objectives are pending approval.

Similar to other list pages in SPOL, the Approve My Objectives page lists Objectives in an expansion list. The list is categorized by Planning Unit, then by Objective. When the Objective is expanded, the option to approve or reject and the Notes text box appears.

1. Click the carrot to the left of the Planning Unit to expand and display any pending Objectives.
2. Select the check box to the left of the Objective to expand and display the approval options.
3. Add Notes to the approval action (the Reject action will require a Note).
4. Select the appropriate approval action (Approve or Reject).
5. Select Apply Approval Actions to apply the selected action
6. A pop-up window will appear asking to confirm the action(s). Select OK to confirm and the system will confirm with a Sending Email notification.



Attachments

[Approve My Objectives.pdf](#)

---

Customer service software powered by Desk.com



[Home](#) > [Planning](#) > Copy Objective Data

## Copy Objective Data

LAST UPDATED: JUN 09, 2014 05:31PM EDT

The **Copy Objective Data** feature in SPOL facilitates the copying, moving, or extending of an Objective from one planning year to another. To access the Copy Objective Data feature, navigate to the Planning Homepage and select "Copy Objective Data". If the selection does not appear on the Planning Homepage it could be for one of the following reasons:

1. You don't have permissions to access the feature
2. You do not belong to a Planning Unit
3. Your SPOL system administrator has hidden the feature under System Layout
4. You have not yet created Objectives under your Planning Unit



### MULTI-YEAR VS. SINGLE-YEAR OBJECTIVES

Objectives are created as either Multi-year (Multi-year = Yes) or Single-Year (Multi-year = No). Depending on the selection made when the Objective was created, the procedure for making Objectives available in future, or past, planning years will be different.

Single-year Objectives are typically identified as projects that begin and end within a single Planning Year. Single-year Objectives can be copied with all data from the previous year, copied with specific data from the previous year, or moved from one Planning Year to another.

Multi-year Objectives are typically identified as projects that take multiple years to complete. Rather than "copy" Multi-year Objectives, Planning Years are "added" to extend the life span of the project.

The Copy Objective Data option allows users to determine what type of Objective they created and identify which years their Objectives belong to.

### COPY SINGLE YEAR OBJECTIVE DATA

The Copy Options are as follows for a Single Year Objectives:

- Copy the Objectives and all the associated data to the Destination Planning Year
- Move the Objectives and all its associated data to the Destination Planning Year.

- Copy the Objectives and choose the associated data to copy along with it to the Destination Planning Year.

## 1. COPY THE OBJECTIVE AND ALL THE ASSOCIATED DATA

Selecting this option will copy all data associated with the Objective(s) to the destination year. Once selected, users can expand the appropriate Planning Unit and select which Objectives they would like to copy.

### Copy Data

**Original Planning Year:**

**Destination Planning Year:**

**Single/Multi Year:**

 **Single Year**    **Multi Year**

---

**Copy Options**

Copy the Objectives and all the associated data to the next Planning Year.

Move the Objectives and all its associated data to the next Planning Year.

Copy the Objectives and choose the associated data to copy along with it.

---

The Objectives listed below have been identified as "single-year." Objectives identified as single-year are individual objectives which typically require one year to complete. Performing the following operation will copy an Objective to the 2013-2014 Planning Year.

**Copy the Objective(s) and all its associated data to the 2013-2014 Planning Year**  
 Selecting this option will copy all data associated with the Objective to the destination year. Once select, users can expand the appropriate Planning Unit and select which Objectives they would like to copy.

---

### My Planning Units

▲ 40000 - Academic Affairs

CHK	Objective ID	Objective Title
<input checked="" type="checkbox"/>	79	Implement Living Learning Centers

40200 - Continuing Education

40100 - Distance Education

1. Select the <Originating Planning Year> and then
2. Select the <Destination Planning Year>
3. Select the the <Single Year> Radio Button
4. Select the button <Copy the Objective(s) and all the associated data to the next Planning Year>
5. Select the carrot next to the appropriate Planning Unit(s) to reveal the Objectives
6. Check the <Single Year Objectives> to copy
7. Select the <Copy Data> button

## 2. MOVE THE OBJECTIVES AND ALL ITS ASSOCIATED DATA TO THE NEXT PLANNING YEAR

Selecting this option will move the Objective(s) and all its associated data to the destination year. Once selected, users can expand the appropriate Planning Unit and select which Objectives they would like to move. (See below image)



## Copy Data

Original Planning Year:  Destination Planning Year:  Single/Multi Year:  Single Year  Multi Year

---

### Copy Options

Copy the Objectives and all the associated data to the next Planning Year.  
 Move the Objectives and all its associated data to the next Planning Year.  
 Copy the Objectives and choose the associated data to copy along with it.

---

The Objectives listed below have been identified as "single-year." Objectives identified as single-year are individual objectives which typically require one year to complete. Performing the following operation will copy an Objective to the 2013-2014 Planning Year.

**Move the Objective(s) and all its associated data to the 2013-2014 Planning Year**  
 Selecting this option will move the Objective and all its associated data to the destination year. Once select, users can expand the appropriate Planning Unit and select which Objectives they would like to move.

---

Check All   
  Expand All   
  Move Data

---

### My Planning Units

- ▲ 40000 - Academic Affairs
 

CHK	Objective ID	Objective Title
<input type="checkbox"/>	79	Implement Living Learning Centers

  - 40200 - Continuing Education
  - 40100 - Distance Education

1. Select the <Originating Planning Year> and then select the <Destination Planning Year>
2. Then select the the <Single Year> Radio Button
3. Select the button <Move the Objective(s) and all the associated data to the next Planning Year>
4. Select the carrot tree to expand the Planning Units. Select the <Single Year Objectives> to copy
5. Then select the <Move Data> button

### 3. COPY THE OBJECTIVES AND CHOOSE THE ASSOCIATED DATA TO COPY ALONG WITH IT

Selecting this option will copy the Objective, with only the selected associated data, to the destination year. Once this option is selected, users will receive an additional set of options to pick from. These additional options represent each element found on the Objective Details page)

To copy the data, users will first select the elements that should be copied, expand the appropriate Planning Unit(s), and select which Objectives they would like to copy. Users may also choose to add or remove elements from specific Objectives by selecting or deselecting options underneath the Objective itself.

## Copy Data


Original Planning Year:  Destination Planning Year:  Single/Multi Year:  Single Year  Multi Year

### Copy Options

Copy the Objectives and all the associated data to the next Planning Year.  
 Move the Objectives and all its associated data to the next Planning Year.  
 Copy the Objectives and choose the associated data to copy along with it.

The Objectives listed below have been identified as "single-year." Objectives identified as single-year are individual objectives which typically require one year to complete. Performing the following operation will copy an Objective to the 2013-2014 Planning Year.

**Copy the Objective(s) and choose the associated data to copy along with it to the 2013-2014 Planning Year**  
 Selecting this option will copy the Objective, with only the selected associated data, to the destination year. When this option is selected, a listing of individual Objective elements will appear. These items represent each element found on the Objective Details page. To copy the data, users will first select the elements that should be copied, expand the appropriate Planning Unit(s), and select which Objectives they would like to copy. Users may also choose to add or remove elements from specific Objectives by selecting or deselecting options underneath the Objective itself.



<input checked="" type="checkbox"/> Institutional Goals	<input checked="" type="checkbox"/> Objective Types	<input checked="" type="checkbox"/> Planning Priorities
<input checked="" type="checkbox"/> Tasks	<input checked="" type="checkbox"/> Tasks Budget	<input checked="" type="checkbox"/> Assessment Measures
<input checked="" type="checkbox"/> Intended Results	<input type="checkbox"/> Status Reports	<input checked="" type="checkbox"/> Actual Results
<input checked="" type="checkbox"/> Use Of Results	<input type="checkbox"/> Gap Analysis	<input type="checkbox"/> SWOT Analysis
<input checked="" type="checkbox"/> Units Impacted	<input type="checkbox"/> Associated Plans & Standards	<input type="checkbox"/> Associated Outcomes
<input type="checkbox"/> Document Management	<input type="checkbox"/> Link Management	

Check All     Expand All     Copy Data

### My Planning Units

- ▶ 40000 - Academic Affairs
 

CHK	Objective ID	Objective Title																		
<input checked="" type="checkbox"/>	79	Implement Living Learning Centers																		
<table border="0" style="width: 100%;"> <tr> <td><input checked="" type="checkbox"/> Institutional Goals</td> <td><input checked="" type="checkbox"/> Objective Types</td> <td><input checked="" type="checkbox"/> Planning Priorities</td> </tr> <tr> <td><input checked="" type="checkbox"/> Tasks</td> <td><input checked="" type="checkbox"/> Tasks Budget</td> <td><input checked="" type="checkbox"/> Assessment Measures</td> </tr> <tr> <td><input checked="" type="checkbox"/> Intended Results</td> <td><input type="checkbox"/> Status Reports</td> <td><input checked="" type="checkbox"/> Actual Results</td> </tr> <tr> <td><input checked="" type="checkbox"/> Use Of Results</td> <td><input type="checkbox"/> Gap Analysis</td> <td><input type="checkbox"/> SWOT Analysis</td> </tr> <tr> <td><input checked="" type="checkbox"/> Units Impacted</td> <td><input type="checkbox"/> Associated Plans &amp; Standards</td> <td><input type="checkbox"/> Associated Outcomes</td> </tr> <tr> <td><input type="checkbox"/> Document Management</td> <td><input type="checkbox"/> Link Management</td> <td></td> </tr> </table>			<input checked="" type="checkbox"/> Institutional Goals	<input checked="" type="checkbox"/> Objective Types	<input checked="" type="checkbox"/> Planning Priorities	<input checked="" type="checkbox"/> Tasks	<input checked="" type="checkbox"/> Tasks Budget	<input checked="" type="checkbox"/> Assessment Measures	<input checked="" type="checkbox"/> Intended Results	<input type="checkbox"/> Status Reports	<input checked="" type="checkbox"/> Actual Results	<input checked="" type="checkbox"/> Use Of Results	<input type="checkbox"/> Gap Analysis	<input type="checkbox"/> SWOT Analysis	<input checked="" type="checkbox"/> Units Impacted	<input type="checkbox"/> Associated Plans & Standards	<input type="checkbox"/> Associated Outcomes	<input type="checkbox"/> Document Management	<input type="checkbox"/> Link Management	
<input checked="" type="checkbox"/> Institutional Goals	<input checked="" type="checkbox"/> Objective Types	<input checked="" type="checkbox"/> Planning Priorities																		
<input checked="" type="checkbox"/> Tasks	<input checked="" type="checkbox"/> Tasks Budget	<input checked="" type="checkbox"/> Assessment Measures																		
<input checked="" type="checkbox"/> Intended Results	<input type="checkbox"/> Status Reports	<input checked="" type="checkbox"/> Actual Results																		
<input checked="" type="checkbox"/> Use Of Results	<input type="checkbox"/> Gap Analysis	<input type="checkbox"/> SWOT Analysis																		
<input checked="" type="checkbox"/> Units Impacted	<input type="checkbox"/> Associated Plans & Standards	<input type="checkbox"/> Associated Outcomes																		
<input type="checkbox"/> Document Management	<input type="checkbox"/> Link Management																			
- 40200 - Continuing Education
- 40100 - Distance Education

1. Select the <Originating Planning Year> and then select the <Destination Planning Year>
2. Then select the the <Single Year> Radio Button
3. Select the button <Copy the Objectives and choose the associated data to copy along with it>
4. Select the data elements to be copied to the Destination Year. These data elements are represented on the Objective Details page. Users may choose to add or remove these data elements. Selecting these will be defaulted to all of the selected Objectives below. If the user chooses individual data elements they may do so under each expanded Objective
5. Select the carrot tree to expand the Planning Units. Select the <Single Year Objectives> users would like to copy

6. If the user wishes to include or exclude specific data elements from the Objective, they may do so with these selections
7. Then select the [<Copy Data>](#) button to copy the objectives with the data elements to the Destination Planning Year

## COPY MULTI-YEAR OBJECTIVE DATA

Objectives designated as Multi-Year, may require multiple years to complete. When a new Planning Year has been established, users can navigate to a multi-year objective and "Add a Planning Year" or use the Copy Objective Data feature to accomplish this task in bulk.

Rather than "Copying" the Objective, the Copy Objective Data feature will add additional Planning Years to Multi-Year Objectives. This operation will make the Objective available in any Planning Year which has been selected.

1. Select the [<Originating Planning Year>](#) and then select the [<Destination Planning Year>](#)
2. Then select the [<Multi Year>](#) Radio Button
3. Select the carrot tree to expand the Planning Units. Select any Multi-Year Year Objectives listed to add the destination year to the Objective
4. Select the [<Add Year>](#) button

### Copy Data ←

**Original Planning Year:**

**Destination Planning Year:**

**Single/Multi Year:**

Single Year
  Multi Year

---

The Objectives listed below have been identified as "multi-year." Objectives identified as multi-year are individual objectives which require multiple years to complete. Performing the following operation, will add the "2013-2014 Planning Year" to the list of Planning Years associated to the individual Objectives.

To add an additional Planning Year to the following Objectives; select the Planning Year from the Destination Planning Year dropdown menu, select the Objective(s) that require an additional year by selecting the appropriate checkbox, and select "Add Year."

---

#### My Planning Units

▲ 40000 - Academic Affairs

CHK	Objective ID	Objective Title
<input checked="" type="checkbox"/>	72	Renovate Learning Lab

40200 - Continuing Education

40100 - Distance Education

Customer service software powered by Desk.com



[Home](#) > [Assessment](#) > SPOL Assessment 1: Programs &...

## SPOL Assessment 1: Programs & Outcomes

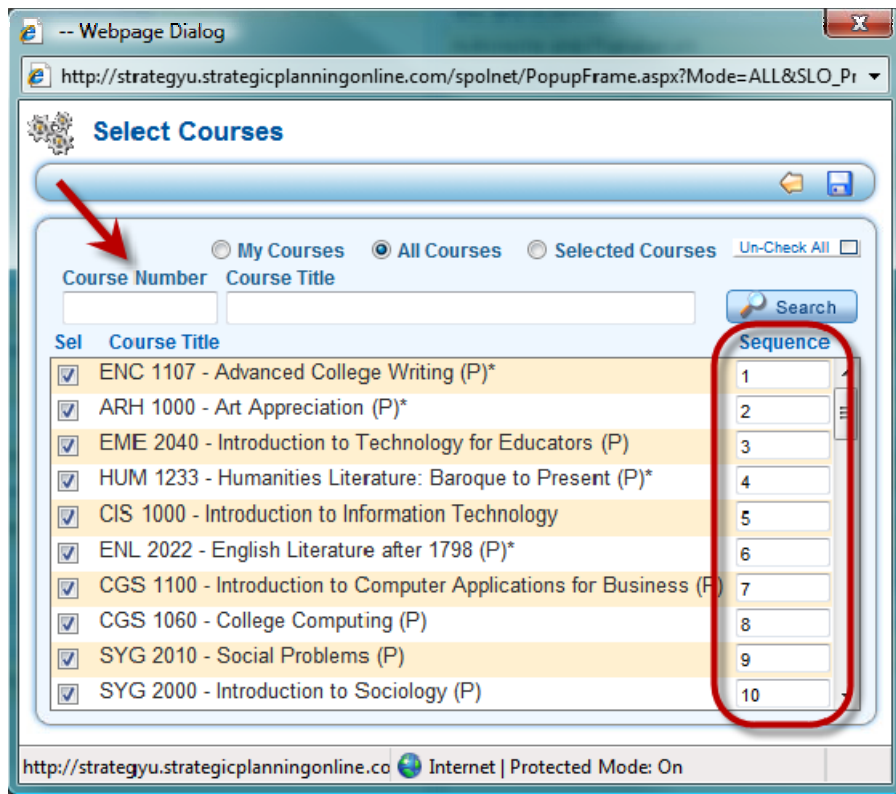
LAST UPDATED: MAR 19, 2014 10:12AM EDT

### SPOL ASSESSMENT 1: PROGRAMS & OUTCOMES

#### Editing Your Program

1. Click [<Edit Program>](#) to update:
  - Program Title
  - Program Description
  - Mission Statement
  - Outcome Types
  - Program Manager
2. Click [<Add Program Goal>](#) to create broad goals related to student:
  - Knowledge
  - Abilities
  - Values
  - Behaviors
3. Click [<Edit Planning Units>](#) to add all planning units that are active participants in this program.
4. Click [<Edit Program Members>](#) to add individual users to the program, which will allow them to add/edit outcomes and other program data.
5. Click [<Edit Courses>](#) to add the major courses to this program.
  - Don't include Gen Ed courses or electives outside of your control.
  - Sequence the courses to determine the order the course will appear in the Program Assessment Map.
  - Search for courses by Course ID or Course Title
6. Click [<Add Outcome>](#) to begin adding outcomes to this program:
  - Student learning outcomes
  - Operational outcomes





## ADDING & EDITING OUTCOMES

7. On the Outcome Edit page, enter:
  - Outcome Title (include an Outcome Number)
  - Outcome Description - what you want to see demonstrated
  - Outcome Operational Status - the stage of the assessment cycle that you're in for this outcome
  - Outcome Type
  - Planning Year with Multi-Year Indicator
8. Upon **<Save>**, you'll navigate to the Outcome Details page. Click **<Edit Outcome>** if you need to go back to the edit page.
9. If this outcome supports one or more program goals, click **<Edit Program Goals>** to select.
10. Click **<Edit Stakeholders>** to select the groups addressed by the outcome, such as students, faculty, donors, etc.
11. Of the courses that have been added to the program, select the Courses where this outcome will be measured.
  - For each course, identify the skill level addressed for this outcome.
  - If the outcome is explicitly addressed in the course syllabus, click on the notepad icon and copy-&-paste the language from the syllabus.
12. If the outcome supports an accreditation standard, select the standard(s) from the Associated Standards section.
13. If the outcome provides data for an objective, or if an objective has been written to improve performance on this standard, select the objective(s) from the Associated Objectives section.

14. Click [<Add Measure>](#) to begin adding measures to this outcome.

**Edit This Outcome**

**Outcome Title:** 2 Gen Ed - Civic Engagement  
**Hide In Program Assessment Map:**

**Outcome ID:** 34  
**Program:** General Education  
**ERP ID:** GenEd-2-2011

**Outcome Operational Status:** In Planning  
**Outcome Type:** General Education Student Learning

**Original Planning Year:** 2010-2011  
**Multi-Year Outcome:**  Yes  No

**Outcome Description:**  
Through the General Education requirements within the Associate in Arts degree, the student will understand and exhibit civic engagement and social responsibility.

# Outcome Details

[Back](#)

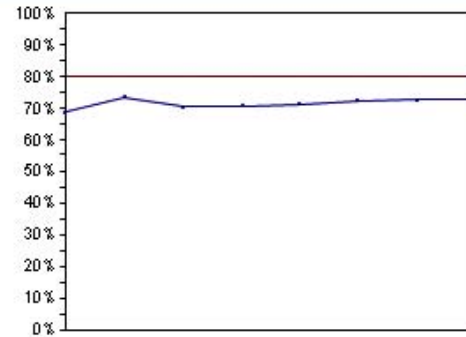
## 2. Gen Ed - Civic Engagement

Through the General Education requirements within the Associate in Arts degree, the student will understand and exhibit civic engagement and social responsibility.

### Outcome Effectiveness

# 91%

- [View Reports](#)
- [View PAM](#)
- [Add to ScoreCards](#)



--- Projected --- Actual [View Actual Results](#)

8

**Outcome Details** [Add Outcome +](#) [Delete Outcome -](#) [Edit Outcome](#)

**Projected Score:** 80%    **Actual Score:** 73%    **Weighted Score:** 91%    **Planning Year:** 2010-2011

**Program:** General Education    **Outcome Type:** General Education Student Learning Outcomes    **Operational Status:** In Planning

Planning Years	Start Date	End Date	<a href="#">Edit Planning Years</a>
2010-2011 (Current)	7/1/2010	6/30/2011	

**Program Goals** [Edit Program Goals](#)

There are no Program Goals to display  
[Click here to add a Program Goal](#)

**Stakeholders** [Edit Stakeholders](#)

\* Students

9

10

**Courses** [Edit Courses](#)

Course	Syllabus	Skill Level
ENC 1107 - Advanced College Writing (P)*		Introductory
ARH 1000 - Art Appreciation (P)*		Introductory
HUM 1233 - Humanities Literature: Baroque to Present (P)*		Reinforce
ENL 2022 - English Literature after 1798 (P)*		Emphasized

**Syllabus** **Skill Level**

	Introductory
	Introductory
	Reinforce
	Emphasized

11

**Measures** [Add Measure +](#)

<b>2.1. Analytic Paper (3-5 pages)</b>		89%	<a href="#">View</a>
Write a 3-5 page analytical paper, incorporating research and MLA documentation.			
<b>2.2. Section Exam - 18th Century European Art</b>		95%	<a href="#">View</a>
Measured by standardized questions given in exam at the conclusion of section on 18th century European art.			

14

### Intended Results

**Associated Standards** [Add Associated Standard +](#) [Remove Associated Standard -](#)

There are no Associated Standards to display  
[Click here to add an Associated Standard](#)

12

**Associated Objectives** [Add Associated Objective +](#) [Remove Associated Objective -](#)

There are no Associated Objectives to display  
[Click here to add an Associated Objective](#)

Objective	Planning Unit	View
-----------	---------------	------

13



Customer service software powered by Desk.com



[Home](#) > [Assessment](#) > SPOL Assessment 2: Measures &...

# SPOL Assessment 2: Measures & Rubrics

LAST UPDATED: MAR 19, 2014 10:09AM EDT

## ADDING & EDITING MEASURES

1. On the Measure Edit page, enter:

- Measure Title (include a Measure Number)
- Measure Description - the activity students (or other stakeholders) will engage in to provide you with data
- Outcome Operational Status - the stage of the assessment cycle that you're in for this outcome

2. Upon [<Save>](#), you'll navigate to the Measure Details page. Click [<Edit Measure>](#) if you need to go back to the edit page.

3. Click [<Edit>](#) on the Measure Types title bar to select the direct or indirect measure type that best describes this measure.

- Each outcome should have at least one direct measure

4. Click [<Edit>](#) on the Stakeholders title bar to select the groups addressed by the measure, such as students, faculty, donors, etc.

5. Click [<Add Rubric>](#) to create the rubric(s) for this measure.

- Rubrics can represent the *grading instrument* used for this activity
- Rubrics create the *data entry template* for outcomes data

**Edit This Measure**

**Outcome Name:**  
2. Gen Ec - Civic Engagement

**Outcome Description:**  
Through the General Education requirements within the Associate in Arts degree, the student will understand and exhibit civic engagement and social responsibility.

**Measure Title:** **ERP ID:**  
2.2. Section Exam - 18th Century European Art

**Measure Description:**  
Measured by standardized questions given in exam at the conclusion of section on 18th century European art.

Measure Details

[Back](#)

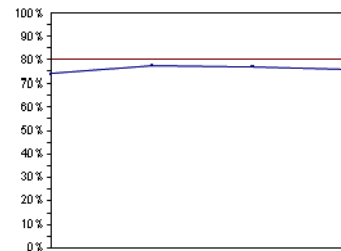
**2.2. Section Exam - 18th Century European Art**

Measure Effectiveness

**95%**

Measured by standardized questions given in exam at the conclusion of section on 18th century European art.

[View Reports](#)  
[Add to ScoreCards](#)



--- Projected --- Actual [View Actual Results](#)



Measure Details

[Add Measure](#) [Delete Measure](#) [Edit Measure](#)

Projected Score: 80%    Actual Score: 76%    Weighted Score: 95%    Planning Year: 2010-2011

**Planning Years**    Start Date    End Date    [Edit Planning Years](#)

2010-2011 (Current)    7/1/2010    6/30/2011

**Measure Types**    [Edit](#)    **Stakeholders**    [Edit](#)

\* Direct - Chapter Exam    There are no Stakeholders to display  
[Click here to add a Stakeholder](#)



Rubrics

2.2.1. Section Exam - 18th Century European Art    [Add Rubric](#)    [View](#)

**Rubric Type:** Benchmark    **Rubric Result Type:** Quantitative Analysis  
Standardized questions given in exam at the conclusion of section on 18th century European art.

**Create a New Rubric**

ERP ID: Create On Save    **Data Type:** ← 7

2.2.1. Section Exam - 18th Century European Art    Class Average

**Rubric Type:** ← 10    **Rubric Result Type:** ← 8    **Planning Year:**

Benchmark    Quantitative Analysis    2010-2011

**Rubric Description:**

Standardized questions given in exam at the conclusion of section on 18th century European art.

**Projected Results:** 80 % ← 9

## ADDING RUBRICS

6. On the Rubric Edit page, enter:

- Rubric Title - the title should be descriptive so that it can be selected from among other rubrics; include a Rubric Number
- Rubric Description - description of the grading or measurement instrument

7. Select the Data Type - you can enter data by class average or scores for individual students.

8. Select the Rubric Result Type - “Quantitative” will allow you to enter numeric scores; “Qualitative” will allow you to enter narrative results.

9. If you selected “Quantitative” for your Rubric Result Type, you will be given a field to enter your Projected Results as a percentage.

10. Select the Rubric Title -

- Benchmark Rubric - allows you to enter a single score for the assessment, entered as a percentage
- Questionnaire Rubric - allows you to enter scores on multiple elements; each is entered as a percentage
- Matrix Rubric - allows you to enter Likert-scale scores on multiple elements; each element has a Likert scale, which translates the Likert score into a percentage score

11. If you select Benchmark (and have also selected Quantitative), you need only enter the Projected Results.

12. If you select Questionnaire, you must enter:

- Projected Results - for the overall assessment (see #11)
- Number of Questions - enter a whole number; you will be given that many fields to enter your questions or grading elements

13. Enter each question or grading element.

14. If you select Matrix, you must enter:

- Projected Results - for the overall assessment (see #11)

- Number of Questions - enter a whole number; you will be given that many fields to enter your questions or grading elements (see #12)

15. Enter each question or grading element (see #13).

16. To add the Finer Scale (aka Likert scale), click [<Add Matrix>](#) to add a single scoring level. Continue to click [<Add Matrix>](#) to add more scoring levels.

17. Enter the details of the finer scale:

- Describe the grading standard for each level (with 1 being the lowest and 5 being the highest)
- Enter the percentage for each scoring level, with 100% being the highest

**Create a New Rubric**

Rubric Title: 2.1.1. Analytic Paper (3-5 pages) ERP ID: Create On Save Data Type: Class Average

Rubric Type: Rubric Matrix Rubric Result Type: Quantitative Analysis Planning Year: 2010-2011

Rubric Description: Grading rubric used for 3-5 page analytic paper designed to measure students' understanding of the nature and importance of civic engagement and social responsibility. (Refer to actual grading rubric for clarification of finer scale used for each graded element.)

Number of Rubric Matrix Questions: 3 Projected Results: 80 %

1. Demonstrates understanding of civic engagement ERP

Finer Scale				Add Matrix +	
1	Poor	55 %	X	ERP	16
2	Satisfactory	70 %	X	ERP	
3	Good	85 %	X	ERP	
4	Excellent	100 %	X	ERP	

2. ERP

3. ERP

Customer service software powered by Desk.com



[Home](#) > [Assessment](#) > The Measure Detail Page

## The Measure Detail Page

LAST UPDATED: OCT 29, 2014 08:59PM EDT

The Measure Detail page supports the Assessment Module. When Measures are first imported into SPOL, the header section of the Measure Detail page becomes populated with the Measure Title, Measure Description, and associated Outcome. The first Planning Year [2] is also added upon the import of Measures.

Data stores that are populated by Users through this page include:

- Additional Planning Years [2]
- Measure Types [3]
- Stakeholders [3]
- Rubrics.

Because Measure Types and Stakeholders are located at the same vertical location on the page, they are grouped together within System Layout. This means that if you exclude this section from the page under System Layout, both data stores will be removed. If you want to remove only one of these sections, you can deny access to the data store under User Permissions. The remaining data store will appear to non-Admin Users, while System Admins will see both data stores.



The Rubrics data store is not a User Permission under Measure, but is a separate section within Assessment.

Measure Details					
SYSTEM LAYOUT DEFAULT SETTINGS:	ORDER	INCLUDED	HIDDEN	USER PERMISSIONS SECTION (GUIDE):	PAGE #
				<b>Assessment &gt; Measures</b>	
1. Measure Details	1	✓		Measure Details	21
2. Planning Years	2	✓		Planning Years	22
3. Measure Types & Stakeholders	3	✓		Measure Types	22
				Stakeholders	22
4. Rubrics	4	✓		N/A	N/A
5. Measure History	5	✓	✓	Measure History	22

My SPOL > Assessment > My Programs > General Education > ENC 1101 Common Writing Assignment

## Measure Details

### ENC 1101 Common Writing Assignment

Evaluation of English 101 common assignment, using Written Communication Gen Ed Outcomes Rubric.

Assessment is performed each Fall semester, taking a random sample from among work submitted for the common assignment within all ENC 1101 sections. Sample will be at least 10% of student population enrolled in ENC 1101 for the semester.

[More >>](#)

**Effectiveness Score**

# 102%

[Add to Scorecards](#)

--- Projected --- Actual [View Average Results](#)

**1** **Measure Details** [New](#) [Delete](#) [Edit](#)

Projected Score: 70%      Actual Score: 72%      Weighted Score: 102%      Planning Year: 2011-2012

**2** **Planning Years** [Edit](#)

Planning Year	Start Date	End Date
<input type="radio"/> 2010-2011	07/01/2010	06/30/2011
<input checked="" type="radio"/> 2011-2012 (Current)	07/01/2011	06/30/2012
<input type="radio"/> 2012-2013	07/01/2012	06/30/2013

**3** **Measure Types** [Add/Edit](#)      **Stakeholders** [Add/Edit](#)

<input checked="" type="radio"/> Direct - Paper < 5 pages	<input checked="" type="radio"/> Students - Lower Division
<input type="radio"/> Direct - Paper > 6 pages	<input type="radio"/> Students - High School

**4** **Rubrics** [Add](#)

**Written Communication Gen Ed Outcomes Rubric** ●●●●●●●●●●●●●●●● 102% [View](#)

**Rubric Type:** Rubric Matrix      **Rubric Result Type:** Quantitative Analysis

Rate the student for each outcome as Excellent (4), Competent (3), Needs Work (2), or Unacceptable (1). Note to Instructor: If an individual outcome is not part of the task/assignment, do not rate that outcome. Write "Not applicable" in the comments section. Students should be at the excellent level upon completion of the associate degree at Think State College.

**5** **Measure History** [View Full History](#)

Date / Time	Action	Modified By
2/12/2012 2:6 AM	Edit Measure	Tracy Hall
2/12/2012 2:6 AM	Remove Stakeholder from Measure	Tracy Hall
10/17/2011 10:47 PM	Add Rubric to Measure	Tracy Hall

Customer service software powered by Desk.com



[Home](#) > [Assessment](#) > The Rubric Detail Page

## The Rubric Detail Page

LAST UPDATED: OCT 29, 2014 08:59PM EDT

The Rubric Detail page supports the Assessment Module. When Rubrics are entered into SPOL, they are built in their entirety. Rubric Details include Rubric Title, Rubric Description, Rubric Type, Rubric Results Type, Projected Score, and Planning Year. Questionnaire and Matrix Rubrics include multiple Questions. Matrix Rubrics include a Finer Scale for each Question. Rubrics are thereafter used as a template for data entry for Measurements.

Data stores that are populated by Users through this page include:

- Measurements
- Associated Courses [5]
- Associated Measures [4].

The Measurements data store is not a User Permission under Rubric, but is a separate section within Assessment.

Rubric Details					
SYSTEM LAYOUT DEFAULT SETTINGS:	ORDER	INCLUDED	HIDDEN	USER PERMISSIONS SECTION (GUIDE):	PAGE #
				<b>Assessment &gt; Rubrics</b>	
1. Rubric Details	1	✓		Rubric Details	22
2. Planning Years <sup>3</sup>	2	✓		Planning Years	22
3. Measurements	3	✓		<b>Assessment</b>	
				Measurements	22
4. Associated Rubric Courses	4	✓	✓	<b>Assessment &gt; Rubrics</b>	
				Associated Courses	22
5. Associated Measures	5	✓	✓	Associated Measures	22
6. Rubric History	6	✓	✓	Rubric History	22



My SPOL > Assessment > My Programs > General Education > Written Communication Gen Ed Outcomes Rubric

### Rubric Details

**Written Communication Gen Ed Outcomes Rubric**

Rate the student for each outcome as Excellent (4), Competent (3), Needs Work (2), or Unacceptable (1).

Note to Instructor: If an individual outcome is not part of the task/assignment, do not rate that outcome. Write "Not applicable" in the comments section.

Students should be at the excellent level upon [More >>](#)

**Effectiveness Score**  
**102%**  
[Add to Scorecard](#)

--- Projected --- Actual View Average Results

**Rubric Summary**

Projected Score: 70% Actual Score: 72% Weighted Score: 102% Planning Year: 2011-2012  
 Rubric Type: Rubric Matrix Rubric Results Type: Quantitative Analysis

Outcome	Scale	Result
1. Identifies suitable topics and controlling ideas	3.39	85%
2. Develops original and thought provoking topics and controlling ideas	3.17	77%
3. Generates and selects sufficient relevant and logical evidence	3.05	71%

**Finer Scale**

Scale	Percent
1 Unacceptable	25%
2 Needs Work	50%
3 Competent	75%
4 Excellent	100%

**3 Measurements**

Measurement	Projected Score	Actual Score	Weighted Score
ENC 1102 students were asked to write research papers (8 pages) on a new technology. They must cite at least 15 sources.	70%	76%	108.6%
in ENC 1101, students submitted persuasive argument papers (6 pages) on a topic currently in the news.	70%	68%	97.1%

**4 Associated Courses**

Course
ENC 1101 - English Composition I
ENC 1102 - English Composition II

**5 Associated Measures**

Measure
DISTRIBUTED: Research Paper
ENC 1101 Common Writing Assignment

**6 Rubric History**

Date / Time	Action	Modified By
12/09/2011 02:27 PM	Edit Rubric	Linda Alvarez
12/01/2011 04:03 PM	Add Rubric to Measure	Frank Baldwin
11/21/2011 03:34 PM	Create Measurement	Linda Alvarez

Customer service software powered by Desk.com