

UNIVERSITY OF NORTH TEXAS GREEK LIFE



Add a chapter to your story

EST. 1890

UNT®

TABLE OF CONTENTS

whats inside

- 1. LETTER FROM THE DEAN OF STUDENTS**
- 2. UNT GREEK LIFE**
- 3. WHAT WE STRIVE FOR**
- 4. THE GREEK LIFE EXPERIENCE**
- 6. COMMON TERMS YOU WILL HEAR**
- 8. MEET THE COUNCILS**
- 10. INTERFRATERNITY COUNCIL**
- 12. MULTICULTURAL GREEK COUNCIL**
- 14. NATIONAL PAN-HELLENIC COUNCIL**
- 16. PANHELLENIC COUNCIL**
- 18. FREQUENTLY ASKED QUESTIONS**
- 20. UNT OFFICES AND HELPFUL RESOURCES**
- 21. THE GREEK LIFE CENTER**

A WELCOME FROM THE DEAN OF STUDENTS

Dear UNT Student,

Your College years will be some of the most memorable of your life. The opportunities available to you at the University of North Texas inside and outside the classroom are absolutely incredible. While you are a student at UNT, I encourage you to get involved in our campus and stay connected. The impact these connections will have on your UNT experience and your future are endless.

One of the greatest ways to get involved on campus is to become a member of a fraternity or sorority. They are so much more than social organizations; they are organizations that value friendship, service, leadership, personal development and academics. These organizations will assist you in your efforts to be a successful, involved student on so many levels.

National studies conducted annually consistently indicate that students who choose to join Greek letter organizations are more likely to graduate from college, are more active on campus and community activities and have a higher GPA than those who are not involved in these organizations.

UNT's Greek Life organizations contribute significantly to the student experience and offer lifelong connections to other students and alumni as well as to the university. We have 38 Greek organizations on campus that are as diverse as you can imagine. These organizations will introduce you to a variety of leadership opportunities and people within our community and beyond. These organizations will also introduce you to their principles, standards, and opportunities for character development as well as connect you to alumni from UNT.

I encourage you to explore Greek Life at UNT and see where you will make the best impact by your involvement. I encourage you to set high standards for yourself and your organization. I encourage you to make positive contributions to your organization, your University and your community. I encourage you to look at all the possibilities and to leave your legacy.

Be the Green Light to Greatness!

Proud to be Green,

Maureen M. McGuinness, Ed.D.

Dean of Students

Assistant Vice President for Student Affairs



UNT GREEK LIFE

SINCE 1952, THE UNIVERSITY OF NORTH TEXAS GREEK COMMUNITY HAS BEEN A VIABLE AND INTEGRAL PART OF CAMPUS LIFE. WITH FOUR COUNCILS CONSISTING OF 38 FRATERNITIES AND SORORITIES, OUR GREEK COMMUNITY OFFERS A UNIQUE AND LIFELONG INVOLVEMENT EXPERIENCE. MEMBERSHIP IN A GREEK ORGANIZATION CAN BE ONE OF THE MOST SIGNIFICANT EXPERIENCES FOR A COLLEGE STUDENT. THE VALUE OF GREEK LIFE FOR STUDENTS WHO CHOOSE TO PARTICIPATE IS THE MELDING OF ALMOST EVERY SEGMENT OF THE CAMPUS COMMUNITY INTO ONE COHESIVE PROGRAM. GREEK LIFE PROMOTES THE EXPERIENCE OF SELF-GOVERNANCE, LEADERSHIP DEVELOPMENT, ACADEMIC ACHIEVEMENT, COMMUNITY SERVICE, SOCIAL OPPORTUNITIES AND FRIENDSHIP.

THE MISSION OF THE GREEK LIFE OFFICE AT THE UNIVERSITY OF NORTH TEXAS IS TO ENHANCE STUDENT DEVELOPMENT THROUGH MEMBERSHIP IN GREEK ORGANIZATIONS. STUDENTS ARE ENCOURAGED TO EMPHASIZE ACADEMIC EXCELLENCE, PHILANTHROPIC PARTICIPATION, PERSONAL DEVELOPMENT, AND SOCIAL DEVELOPMENT. WE STRIVE TO CREATE A UNIFIED CAMPUS THROUGH POSITIVE RELATIONS WITH ADMINISTRATION, FACULTY, AND ALL GREEK AND NON-GREEK STUDENT ORGANIZATIONS. THROUGH THESE ENDEAVORS, THE GREEK LIFE OFFICE STRIVES TO COMPLEMENT THE MISSION OF THE UNIVERSITY OF NORTH TEXAS.

THE GREEK COMMUNITY AT NORTH TEXAS STRIVES TO PROMOTE THE FOLLOWING PRINCIPLES REFERRED TO AS THE 4 PILLARS:

- SCHOLARSHIP
- LEADERSHIP
- SERVICE
- BROTHERHOOD\SISTERHOOD

THESE CORE VALUES GUIDE OUR EVERYDAY WAY OF LIFE. GREEK LIFE PROVIDES AN OPPORTUNITY TO GROW AS AN INDIVIDUAL, BUT WITHIN AN ENVIRONMENT OF OTHERS WHO SHARE YOUR COMMITMENT TO THE FOUNDING PRINCIPLES OF YOUR ORGANIZATION. WE FIRMLY BELIEVE THAT A GREEK EXPERIENCE AT ITS BEST CAN HAVE A SIGNIFICANT POSITIVE IMPACT ON A STUDENT DURING HIS OR HER COLLEGIATE YEARS AND AFTER COLLEGE AS WELL.



WHAT WE STRIVE FOR

Leadership. Scholarship. Service. Brotherhood/Sisterhood

LEADERSHIP

AT THE UNIVERSITY OF NORTH TEXAS, THE GREEK COMMUNITY IS COMMITTED TO PROVIDING ITS MEMBERS WITH VAST OPPORTUNITIES FOR LEADERSHIP RESPONSIBILITIES. EACH MEMBER IS ENCOURAGED TO ACTIVELY PARTICIPATE IN CHAPTER AND CAMPUS-WIDE LEADERSHIP ROLES. GREEK MEMBERS ALSO DEVELOP LEADERSHIP SKILLS THROUGH LEADERSHIP RETREATS, NATIONAL CONVENTIONS, AND OTHER RESOURCES AVAILABLE ON CAMPUS, IN ADDITION TO THE LEARNING AND SELF-DISCOVERY ASSOCIATED WITH HOLDING A LEADERSHIP POSITION.

SCHOLARSHIP

THE GREEK COMMUNITY STRIVES FOR EXCELLENCE IN SCHOLARSHIP AND THE DEVELOPMENT OF HEALTHY STUDY AND ACADEMIC HABITS AMONG ALL MEMBERS. ALL CHAPTERS AT THE UNIVERSITY OF NORTH TEXAS MAINTAIN GPA REQUIREMENTS FOR BOTH MEMBERSHIP AND FOR ASSUMING MAJOR LEADERSHIP ROLES. MANY FRATERNITIES AND SORORITIES CONSISTENTLY HAVE HIGHER GPAs THAN THE UNT STUDENT POPULATION AS A WHOLE AND CHAPTERS WORK DILIGENTLY EACH SEMESTER TO ACHIEVE HIGH GPAs. MANY CHAPTERS HAVE REQUIRED STUDY HOURS AND OFFER INCENTIVES SUCH AS SCHOLARSHIPS. ORGANIZATIONS ALSO PARTNER WITH VARIOUS AREAS ON CAMPUS AND THE OFFICE OF GREEK LIFE TO ENSURE THAT THEY HAVE THE TOOLS NEEDED TO BE SUCCESSFUL IN THEIR ACADEMIC CAREER.

SERVICE

COMMUNITY SERVICE AND PHILANTHROPY WORK ARE AN IMPORTANT ASPECT OF GREEK LIFE AT THE UNIVERSITY OF NORTH TEXAS. CHAPTERS OFFER HUNDREDS OF HOURS AND THOUSANDS OF DOLLARS EACH YEAR TO FULFILL THEIR COMMITMENT TO BOTH THE CAMPUS AND THE COMMUNITY. FUNDS RAISED AND TIME DONATED DIRECTLY BENEFIT LOCAL AND NATIONAL CHARITABLE ORGANIZATIONS. IN THE FALL 2014 SEMESTER, UNT GREEKS DONATED AND RAISED OVER \$78,000 TO CHARITABLE ORGANIZATIONS AND UNT SCHOLARSHIPS AND STUDENTS. THEY ALSO CONTRIBUTED OVER 20,000 HOURS OF COMMUNITY SERVICE.

SISTERHOOD/BROTHERHOOD

ONE OF THE MOST UNIQUE BENEFITS OF JOINING A SORORITY OR FRATERNITY ARE THE BONDS THAT ARE CREATED BETWEEN MEMBERS. IT IS A GREAT WAY TO MAKE UNT'S LARGE CAMPUS SMALLER, AS YOU WILL MEET AND INTERACT WITH MEMBERS FROM OTHER GREEK ORGANIZATIONS OFTEN. FROM MIXERS TO GREEK WEEK, PHILANTHROPY EVENTS TO WEEKLY HOUSE DINNERS, THESE EXPERIENCES AND FRIENDSHIPS YOU CREATE WHILE A PART OF UNT GREEK LIFE WILL LAST A LIFETIME

CHAPTERS ABOVE THE ALL-MEN'S OR ALL-WOMEN'S AVERAGE (FALL 2014)

- DELTA KAPPA DELTA
- ALPHA DELTA PI
- CHI OMEGA
- ALPHA EPSILON PI
- IOTA PHI THETA
- KAPPA DELTA CHI
- PHI BETA SIGMA
- DELTA GAMMA
- LAMBDA THETA ALPHA
- KAPPA KAPPA GAMMA
- SIGMA LAMBDA GAMMA
- PI KAPPA ALPHA
- PI KAPPA PHI
- PHI IOTA ALPHA
- SIGMA CHI
- SIGMA PHI EPSILON
- SIGMA NU
- THETA CHI

GREEK LIFE



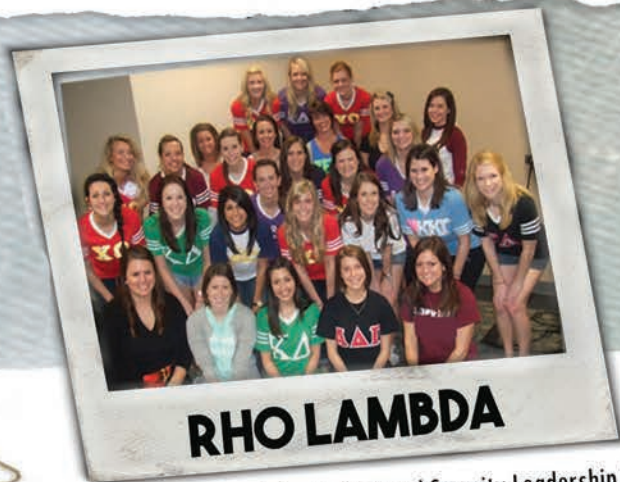
GREEK PROGRAMMING BOARD

The Greek Programming Board is comprised of fraternity and sorority members seeking to advance the Greek community through large scale programming such as Greek Convocation, Greek Week, and Greek Preview Day. GPB also plans and facilitates small events such as focus groups, community service events, and workshops to assist in the development of the chapters and members.



GREEK AMBASSADOR

The Greek Ambassador program seeks to educate the local and UNT communities about the benefits of Greek membership, while promoting change in false perceptions. This message is further communicated through the Greek Ambassador program.



RHO LAMBDA

The UNT chapter of Rho Lambda, the National Sorority Leadership Recognition Society, was founded in 2007. The purpose of the organization is to honor women within the sorority community who have exhibited the highest-qualities of leadership and service to the Greek community.



ORDER OF OMEGA

Order of Omega is a Greek honorary society. The Beta Xi Chapter was chartered and began an active role on campus in 1978 with more than 15 initiated members. The Beta Xi Chapter of Order of Omega is responsible for Greek Awards and the "Operation Turkey Dinner" canned food drive.

EXPERIENCE



INTRAMURAL SPORTS

Greek students participate in a variety of UNT Intramural sports such as Flag Football, Volleyball, Basketball, Soccer, and Softball. Several of our Greek teams have made it to the finals, with some being named the UNT Intramural Champion for their sport



HOMECOMING WEEK

Members of the Greek Community play a large role in UNT's Homecoming Week. Greek organizations are paired together to build floats for the Homecoming Parade, design and create the Spirit Wall, choreograph routines for the UNT Bonfire, host tailgating events, and so much more!



ALTERNATIVE SPRING BREAK

The mission of the University of North Texas' Alternative Breaks Program is to raise awareness of social issues and injustices through education and intensive service learning experiences.



GREEK WEEK

During Greek Week, Greek organizations are teamed together to host and compete in a variety of events such as Unity Night, Greek Games, Greek Awards, and so much more!



STEPSHOWS/TAKEOVERS

A stepshow is an event where fraternities and sororities showcase their organization while competing against each other in step routines, dances and skits for an audience. Fraternities and Sororities may also host Takeovers on campus to raise awareness for a cause or funds for a philanthropy while providing entertainment.

COMMON TERMS

ACTIVE MEMBER: AN UNDERGRADUATE FRATERNITY OR SORORITY MEMBER WHO HAS BEEN INITIATED BY THE CHAPTER.

ALUMNA/ALUMNUS: A SORORITY/FRATERNITY MEMBER WHO IS NO LONGER A MEMBER OF A COLLEGIATE CHAPTER, PLURALS ARE ALUMNAE AND ALUMNI.

BID: A FORMAL INVITATION TO JOIN A SORORITY OR FRATERNITY

CALL/CHANT: AUDIBLE SOUNDS OR CHANTS USED BY CHAPTERS TO ACKNOWLEDGE AND RECOGNIZE ONE ANOTHER

CHAPTER: LOCAL MEMBERSHIP UNIT OF A NATIONAL OR INTERNATIONAL FRATERNITY OR SORORITY.

CONTINUOUS OPEN BIDDING (COB): COB BIDS MAY BE EXTENDED AND ACCEPTED AT ANY TIME DURING THE SCHOOL YEAR OTHER THAN FORMAL RECRUITMENT. COB IS ALSO REFERRED TO AS OPEN BIDDING AND INFORMAL MEMBERSHIP RECRUITMENT.

FORMAL RECRUITMENT: A DESIGNATED MEMBERSHIP RECRUITMENT PERIOD COMPRISED OF A SERIES OF EVENTS HOSTED BY EACH NPC SORORITY, SCHEDULED AND GOVERNED BY THE PANHELLENIC ASSOCIATION.

FRATERNITY: A GREEK LETTER ORGANIZATION, WHICH MAY ADMIT MEN, WOMEN, OR BOTH. ALTHOUGH MANY PEOPLE USE 'FRATERNITY' TO REFER EXCLUSIVELY TO MEN'S GROUPS, MANY WOMEN'S GROUPS OFFICIALLY CALL THEMSELVES FRATERNITIES, AND THE MOST PROPER TERM FOR THEM IS WOMEN'S FRATERNITIES

HAND SIGN: SYMBOL OR GESTURE MADE WITH THE HANDS THAT SIGNIFY MEMBERSHIP IN A PARTICULAR ORGANIZATION THAT ARE UNIQUE AND SHOULD ONLY BE REPLICATED BY MEMBERS.

LINE: THE PERSONS WHO WERE INITIATED TOGETHER IN THE SAME CHAPTER. PRIMARILY USED WITH MGC AND NPHC ORGANIZATIONS

LINE BROTHER/SISTERS: PERSONS THAT WERE A PART OF THE SAME INITIATION MEMBERSHIP PROCESS, AT THE SAME TIME AND IN THE SAME CHAPTER. EACH PERSON USUALLY OBTAINS A NUMBER DURING INITIATION, WHICH IS REFERRED TO AS A LINE NUMBER. PRIMARILY USED IN MGC AND NPHC ORGANIZATIONS.

INITIATION - THE FORMAL CEREMONY THAT BRINGS A NEW MEMBER INTO FULL MEMBERSHIP WITH THE ORGANIZATION.

MEMBERSHIP INTAKE: THE MEMBERSHIP RECRUITMENT AND EDUCATION PROCESS FOR THE NATIONAL PAN-HELLENIC COUNCIL AND MULTICULTURAL GREEK COUNCIL

NEOPHYTE: A NEWLY INITIATED MEMBER OF AN MGC OR NPHC ORGANIZATION

NEW MEMBER: A MAN OR WOMAN WHO HAS ACCEPTED A SORORITY OR FRATERNITY BID BUT IS NOT YET AN INITIATED MEMBER.

PHILANTHROPY: A SERVICE PROJECT UNDERTAKEN BY GREEK ORGANIZATIONS AT THE CAMPUS, COMMUNITY, OR NATIONAL LEVEL. EACH FRATERNITY AND SORORITY HAS A DESIGNATED CAUSE TO WHICH THEY SERVE.

POTENTIAL NEW MEMBER (PNM): ANY MAN OR WOMAN INTERESTED IN BECOMING A MEMBER OF A SOCIAL GREEK-LETTER ORGANIZATION WHO IS ELIGIBLE TO JOIN ACCORDING TO SPECIFIC COUNCIL REQUIREMENTS.

PROPHYTE: A MEMBER WHO HAS EXPERIENCED AT LEAST ONE INTAKE PROCESS AS AN INITIATED MEMBER OF THE ORGANIZATION.

YOU WILL HEAR

RECRUITMENT COUNSELORS (RHO GAMMAS): A PANHELLENIC WOMAN CAREFULLY SELECTED AND TRAINED TO GUIDE POTENTIAL NEW MEMBERS THROUGH THE PANHELLENIC FORMAL RECRUITMENT PROCESS. THESE WOMEN DISAFFILIATE FROM THEIR ORGANIZATION DURING THE RECRUITMENT PROCESS.

SHOWCASE: AN OPPORTUNITY FOR NPHC AND MGC FRATERNITIES AND SORORITIES TO "SHOWCASE" THEIR INDIVIDUAL CHAPTERS TO POTENTIAL NEW MEMBERS. BOTH NPHC AND MGC HOST ANNUAL SHOWCASE EVENTS.

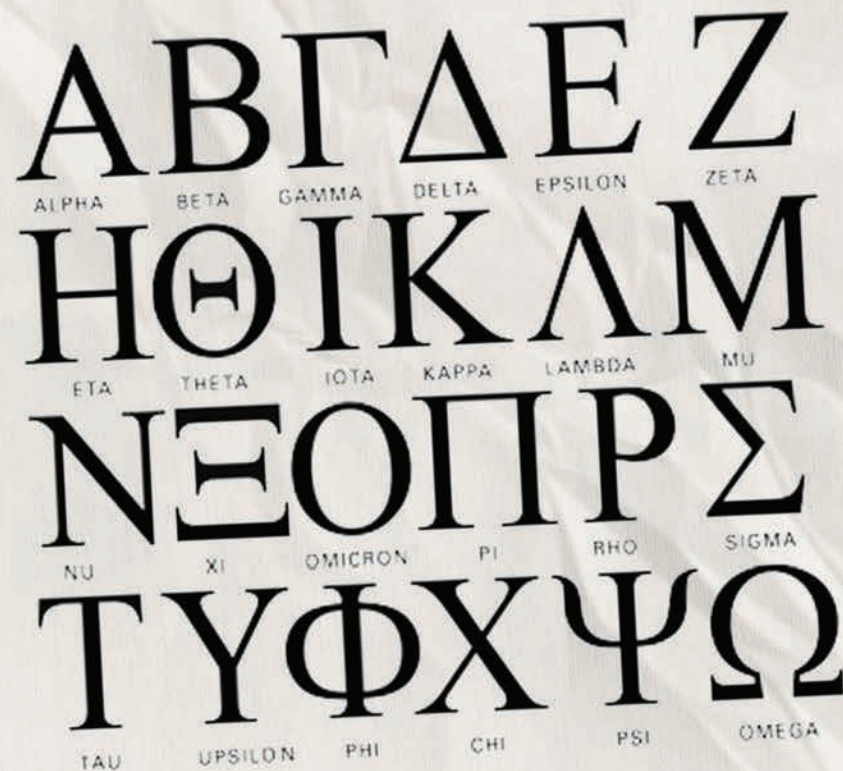
SISTER/BROTHER: A TERM USED BY MEMBERS OF A SORORITY OR FRATERNITY WHEN REFERRING TO ONE ANOTHER.

STRUTTING/STROLLING: COORDINATED MOVEMENTS DONE IN A LINE BY MGC AND NPHC ORGANIZATIONS TO SHOWCASE UNITY. IT IS OFTEN DEMONSTRATED AT SOCIAL GATHERINGS OR DURING STEP SHOWS

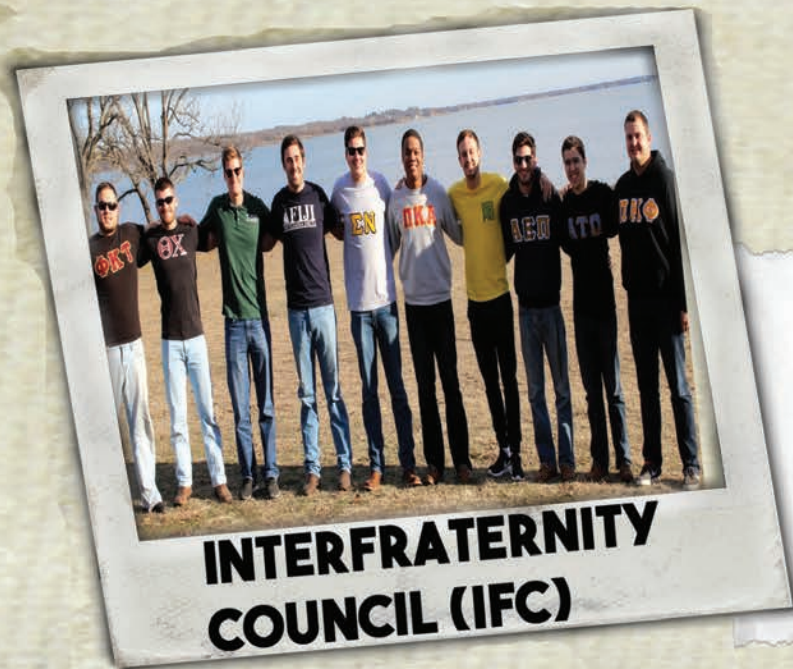
SORORITY: A GREEK LETTER ORGANIZATION, WHICH ADMITS ONLY WOMEN. THE TERM DID NOT COME INTO COMMON USE UNTIL LATER IN THE 20TH CENTURY.

WEEK: PERIOD OF TIME WHEN AN ORGANIZATION SPONSORS A VARIETY OF EVENTS FOR THE CAMPUS. MAY INCLUDE EDUCATIONAL PROGRAMS, DISCUSSIONS OR DEBATES, VARIETY SHOWS, PARTIES, AND STEP SHOWS, COMMUNITY SERVICE OR PHILANTHROPIC EFFORTS. SOMETIMES REFERRED TO AS FOUNDERS' WEEK OR PHILANTHROPIC WEEKS.

THE GREEK ALPHABET



MEET THE



ΑΕΠ **ALPHA EPSILON PI**
ΑΤΩ **ALPHA TAU OMEGA**
ΔΣΦ **DELTA SIGMA PHI**
ΛΘΦ **LAMBDA THETA PHI**
ΠΚΑ **PI KAPPA ALPHA**
ΠΚΦ **PI KAPPA PHI**

ΦΙΓ **PHI GAMMA DELTA**
ΦΚΣ **PHI KAPPA SIGMA**
ΦΚΤ **PHI KAPPA TAU**
ΣΧ **SIGMA CHI**
ΣΝ **SIGMA NU**
ΣΦΕ **SIGMA PHI EPSILON**
ΘΧ **THETA CHI**

ΔΦΩ **DELTA PHI OMEGA SORORITY, INC.**
ΔΚΔ **DELTA KAPPA DELTA SORORITY, INC.**
ΚΔΧ **KAPPA DELTA CHI SORORITY, INC.**
ΛΘΑ **LAMBDA THETA ALPHA LATINA SORORITY, INC.**
ΛΘΦ **LAMBDA THETA PHI LATIN FRATERNITY, INC.**
ΩΔΦ **OMEGA DELTA PHI FRATERNITY, INC.**
ΦΙΑ **PHI IOTA ALPHA FRATERNITY, INC.**
ΣΛΓ **SIGMA LAMBDA GAMMA NATIONAL SORORITY, INC**
ΣΛΒ **SIGMA LAMBDA BETA INTERNATIONAL FRATERNITY**
ΔΕΨ **DELTA EPSILON PSI FRATERNITY, INC**



GREEKS

ΑΦΑ
ΑΚΑ
ΩΨΦ
ΔΣΘ
ΦΒΣ
ΖΦΒ
ΣΓΡ
ΙΦΘ

ALPHA PHI ALPHA FRATERNITY, INC.
ALPHA KAPPA ALPHA SORORITY, INC.
OMEGA PSI PHI FRATERNITY, INC.
DELTA SIGMA THETA SORORITY, INC.
PHI BETA SIGMA FRATERNITY, INC.
ZETA PHI BETA SORORITY, INC.
SIGMA GAMMA RHO SORORITY, INC.
IOTA PHI THETA FRATERNITY, INC.



**NATIONAL PAN-HELLENIC
COUNCIL (NPHC)**



**PANHELLENIC
COUNCIL (PAN)**

ΑΔΠ **ALPHA DELTA PI**

ΑΦ **ALPHA PHI**

ΧΩ **CHI OMEGA**

ΔΓ **DELTA GAMMA**

ΚΔ **KAPPA DELTA**

ΚΚΓ **KAPPA KAPPA GAMMA**

ΠΒΦ **PI BETA PHI**

ΖΤΑ **ZETA TAU ALPHA**

IFC



What is the Interfraternity Council (IFC)?

IFC is the governing body of 13 fraternities on campus. As a council, IFC promotes academic excellence, high social and moral standards, facilitates programs for member fraternities and acts as a liaison between member fraternities and other student organizations, the student body, and UNT administration.

How to Join

IFC participates in both a formal and informal recruitment process. There is a formal week of recruitment during both the fall and spring semesters; however, organizations are encouraged to recruit members year round by making contact and forming relationships. The process is also a mutual selection process by which members of a fraternity decide which men they would most like to join their fraternity that align with their values. At the same time, prospective new members are deciding which fraternity they want to seek membership in.

Visit the national website at www.nicindv.org

ΑΕΠΙ	Alpha Epsilon Pi
	<p><i>Nickname</i> AEPi <i>Colors</i> Gold and Blue <i>National Website</i> www.aepi.org <i>Founded</i> New York University, 1913 <i>UNT</i> 2008 <i>Philanthropy</i> No National Philanthropy <i>Motto</i> "Commitment for a lifetime"</p>
ΑΤΩ	Alpha Tau Omega
	<p><i>Nickname</i> A-T-O <i>Colors</i> Azure Blue and Old Gold <i>National Website</i> www.ato.org <i>Founded</i> Virginia Military Institute, 1865 <i>UNT</i> 2006 <i>Philanthropy</i> Team Conner <i>Motto</i> "America's Leadership Development Fraternity"</p>

ΔΣΦ	Delta Sigma Phi
	<p><i>Nickname</i> Delta-Sig <i>Colors</i> Nile Green and White <i>National Website</i> www.deltasigmaphi.org <i>Founded</i> City College of New York, 1899 <i>UNT</i> 1952 <i>Philanthropy</i> Red Cross <i>Motto</i> "Better Men, Better Lives"</p>
ΘΧ	Theta Chi
	<p><i>Colors</i> Military Red and White <i>National Website</i> www.thetachi.org <i>Founded</i> Norwich University, 1856 <i>UNT</i> 1954 <i>Philanthropy</i> Save Our Students, Wigs for Kids, Wounded Warrior Project <i>Motto</i> "An Assisting Hand"</p>

ΦΙΙ

Phi Gamma Delta



Nickname | FIJI or Phi Gam
Colors | Royal Purple
National Website | www.phigam.org
Founded | Jefferson College, 1848
UNT | 2008
Philanthropy | American Red Cross, USO
Motto | "Friendship, the sweetest influence"



ΦΚΣ

Phi Kappa Sigma



Nickname | P Skulls
Colors | Old Gold and Black
National Website | www.pks.org
Founded | University of Pennsylvania, 1850
UNT | 1955
Philanthropy | Leukemia and Lymphoma Society of America
Motto | "Equal to the stars in endurance"



ΦΚΤ

Phi Kappa Tau



Nickname | Phi Tau
Colors | Harvard Red and Old Gold
National Website | www.phikappatau.org
Founded | Miami University, 1906
UNT | Colonized 2011
Philanthropy | Hole in the Wall Camps
Motto | "Building men of character"



ΠΚΑ

Pi Kappa Alpha



Nickname | PIKES
Colors | Garnet and Old Gold
National Website | www.pka.com
Founded | University of Virginia, 1868
UNT | 2008
Philanthropy | Muscular Dystrophy
Motto | "Once a Pike, Always a Pike"



ΠΚΦ

Pi Kappa Phi



Nickname | Pi-Kapps
Colors | White and Gold
National Website | www.pikapp.org
Founded | College of Charleston, 1904
UNT | 2009
Philanthropy | Push America
Motto | "Nothing shall ever tear us asunder"



ΣΧ

Sigma Chi



Nickname | SIGS
Colors | Blue and Old Gold
National Website | www.sigmachi.org
Founded | Miami University, 1855
UNT | November 17, 1990
Philanthropy | Huntsman Cancer Research Institute
Motto | "Men of the white cross"



ΣΝ

Sigma Nu



Colors | Gold, Black, White
National Website | www.sigmanu.org
Founded | January 1st, 1869
UNT | 1953
Philanthropy | Character Counts
Motto | "Life of Love; Way of Honor; Light of Truth"



ΣΦΕ

Sigma Phi Epsilon



Nickname | Sig-Ep
Colors | Red, Purple, and Gold
National Website | www.sigep.org
Founded | Richmond College, 1901
UNT | 1952
Philanthropy | Youth Aids
Motto | "Balanced Men"



MGC



What is the Multicultural Greek Council (MGC)?

The Multicultural Greek Council (MGC) is the umbrella organization to the ten recognized historically Multicultural, Latino, and South Asian fraternities and sororities at UNT. Though membership in this council is not restricted to students of Multicultural heritage, MGC serves as a multifaceted organization whose purposes include representing Multicultural interest to the University and community, managing and assisting in the expansion of future Multicultural Greek organizations, promotion of the concept of self governance among fraternities and sororities, unification of the Multicultural Greek groups, sponsoring of large scale community service projects, and planning various activities throughout the year with other organizations.

How to Join

Membership in an MGC organization is a life-long commitment. Members of MGC organizations remain active as alumni members and participate in many events nationwide. Each affiliate organization implements its own membership intake process that is developed by the National organization. Some MGC chapters have affiliated interest groups. Membership in the interest group does not guarantee membership; however, is an opportunity to learn about the organization and their values. The interest groups host educational workshops, participate in community service, and create a sense of brotherhood or sisterhood.

Visit the national websites at www.nationalmgc.org or www.nalfo.org

ΔΚΑ Delta Kappa Delta Sorority Inc.



Nickname | DKD
Colors | Violet, Black, and Silver
National Website | www.deltakappadelta.com
Founded | Texas A&M University, 1999
UNT | September 24, 2011
Philanthropy | Child Abuse Awareness and Prevention
Motto | "I slept and dreamt that life was joy, I awoke and saw that life was service, I acted, and behold, service was joy."



ΔΦΩ Delta Phi Omega



Nickname | D-Phi-O and DPO
Colors | Red, Black and Silver
National Website | www.deltaphiomega.org
Founded | University of Houston, 1998
UNT | August 28th, 2004
Philanthropy | Child Education & Literacy
Motto | "We Dreamt, We Saw, We Conquered"



ΔΕΨ Delta Epsilon Psi



Nickname | D-Psi
Colors | Navy Blue & Silver
National Website | www.deltaepsilonpsi.org
Founded | University of Texas, 1998
UNT | 2014
Philanthropy | American Diabetes Association
Motto | "In Brotherhood Lies Our Strength"



ΚΔΧ Kappa Delta Chi



Nickname | K-D-Chi
Colors | Pink and Maroon
Founded | Texas Tech University, 1987
Mascot | Penguin
National Website | www.kappadeltachi.org
UNT | 2002
Philanthropy | American Cancer Society
Motto | "Leading with Integrity, Uniting with Service"



ΛΦΑ Lambda Theta Alpha Latina Sorority Inc.



Nickname | Lambda Ladies, LTA
Colors | Burgundy and Grey
Mascot | The Universal Woman
National Website | www.lambdalady.org
Founded | Kean University, 1975
UNT | 2000
Philanthropy | St. Jude's
Motto | "Unity, Love, and Respect"



ΛΘΦ Lambda Theta Phi Latin Fraternity Inc.



Nickname | Lambdas
Colors | Brown and White
Mascot | No official mascot
National Website | www.lambda1975.org
Founded | Kean College, 1975
UNT | April 5th, 1998
Philanthropy | American Heart Association
Motto | "Chivalry Above Self"



ΩΔΦ Omega Delta Phi



Nickname | O-D-Phi
Colors | Scarlet and Silver
Mascot | Knight
National Website | www.omegadeltaphi.com
Founded | Texas Tech University, 1987
UNT | November 15, 2008
Philanthropy | CASA
Motto | "Crescit Eundo—It grows as it goes"



ΦΙΑ Phi Iota Alpha



Nickname | Phiota
Colors | Gold, Navy Blue, Red, and White
Mascot | African Lion
National Website | www.phiota.info
Founded | Rensselaer Polytechnic Institute, 1931
UNT | 2005
Philanthropy | UNICEF
Motto | "Semper Parati, Semper Juncti"



ΣΛΒ Sigma Lambda Beta International Fraternity



Nickname | Lambda Betas, Betas
Colors | Royal Purple and Pure White
National Website | sigmalambdabeta.com
Founded | University of Iowa, 1986
UNT | April 29, 2001
Philanthropy | Victor Correa CPR Awareness Day, Change for Change
Motto | "Opportunity for Wisdom, Wisdom for Culture"



ΣΛΓ Sigma Lambda Gamma



Nickname | Gammas, SLG
Colors | Shocking Pink and Majestic Purple
Mascot | Purple Panther
National Website | www.sigmalambdagamma.com
Founded | The University of Iowa, 1990
UNT | February 22, 2003
Philanthropy | Breast Cancer Awareness, TRIO Programs
Motto | "Culture is Pride, Pride is Success"



NPHC



What is the National Pan-Hellenic Council?

The stated purpose and mission of the NPHC nationally upon its founding in 1930 was "Unanimity of thought and action as far as possible in the conduct of Greek letter collegiate fraternities and sororities, and to consider problems of mutual interest to its member organizations."

The UNT chapter of NPHC was chartered in 1995. Since that time, the council has been a strong, positive force on the UNT campus. NPHC promotes interaction through forums, meetings and other mediums for the exchange of information, and engages in cooperative programming and initiatives important to the African-American community through various activities and functions. While these organizations are historically African-American, they are open to men and women of all races. Current NPHC members are involved in activities such as NT40, UNT Athletics, NAACP, SGA, and a host of professional and honorary organizations. Finding a balance between academics and social activities is important in your college life, and involvement in both areas will provide you with a well-rounded college experience.

How to Join

Each member group's national organization has different requirements for their Membership Intake Process. Each group will host a interest/rush meeting either in the fall or spring semester where you can officially express your interest and receive details as to what is required to attain membership with their group.

During the Fall Semester the NPHC sponsors the "NPHC Showcase" annually, a program to inform prospective members about each individual organization. During this program you will receive a brief overview of NPHC and each of its member groups as well as have the opportunity to interact with the different members.

Visit the national website at www.nphcq.org

AΦA Alpha Phi Alpha Fraternity, Inc.



Chapter | "Notorious" Eta Epsilon
Nickname | Alphas
Colors | Black and Old Gold
Symbol | Sphinx
National Website | www.alpha-phi-alpha.com
Founded | Cornell University, 1906
UNT | April 30, 1970
Motto | "First of all, servants of all, we shall Transcend All"



AKA Alpha Kappa Alpha Sorority, Inc.



Chapter | "Electrifying" Epsilon Mu
Nickname | A-K-A
Colors | Salmon Pink and Apple Green
Symbol | Ivy Leaf
National Website | www.aka1908.com
Founded | Howard University, 1908
UNT | October 3, 1969
Motto | "By Culture and By Merit"



ΩΨΦ **Omega Psi Phi Fraternity, Inc.**



Chapter | "Ferocious" Phi Gamma
Nickname | Omegas, Ques
Colors | Royal Purple and Old Gold
Symbol | Lamp
National Website | www.omegapsiphifraternity.org
Founded | Howard University, 1911
UNT | December 21, 1968
Motto | "Friendship is essential to the soul"



ΔΣΘ **Delta Sigma Theta Sorority, Inc.**



Chapter | "Amazin" Zeta Eta
Nickname | Deltas
Colors | Crimson and Creme
Symbol | Fortitude
National Website | www.deltasigmatheta.org
Founded | Howard University, 1913
UNT | September 29, 1968
Motto | "Intelligence is the Torch of Wisdom"



ΦΒΣ **Phi Beta Sigma Fraternity, Inc.**



Chapter | "Bodacious" Zeta Beta
Nickname | Sigmas
Colors | Royal Blue and Pure White
Symbol | Dove
National Website | www.pbs1914.org
Founded | Howard University, 1914
UNT | January 22, 1973
Motto | "Culture for Service, Service for Humanity"



ΣΓΡ **Sigma Gamma Rho Sorority, Inc.**



Chapter | "Exquisite" Eta Alpha
Nickname | SGRho
Colors | Royal Blue and Antique Gold
Symbol/Mascot | French White Toy Poodle
National Website | www.sgrho1922.org
Founded | Butler University, 1922
UNT | February 7, 1976
Motto | "Greater Service, Greater Progress"



ΖΦΒ **Zeta Phi Beta Sorority, Inc.**



Chapter | "Devastating" Rho Delta
Nickname | Zetas
Colors | Royal Blue and White
Symbol | White Dove
National Website | www.zphib1920.org
Founded | Howard University, 1920
UNT | June 1972
Motto | "A Community-Conscious, Action-Oriented Organization"



ΙΦΘ **Iota Phi Theta Fraternity, Inc.**



Chapter | "Destructive" Delta Kappa
Nickname | Iotas
Colors | Charcoal Brown and Gilded Gold
Symbol/Mascot | Centaur
National Website | www.iotaphitheta.org
Founded | Morgan State University, 1963
UNT | September 10, 1999
Motto | "Building a tradition, not resting upon one!"



Panhellenic



What is the Panhellenic Council (PAN)

The Panhellenic Council is the governing body of the eight National Panhellenic Conference sororities at the University of North Texas. Panhellenic is an organization established to foster interfraternal relationships, to help collegiate chapters of the National Panhellenic Conference member groups, and to assist in maintaining the highest scholastic and social standards. The council enables the sororities to work together more effectively on campus.

The individual organizations are dedicated to personal development, academic achievement, leadership growth, and service to the campus and community. Activities may include community service projects, educational programs, leadership training, study halls, sisterhood retreats, intramural sports and fraternity mixers. Above all, sororities foster close friendships that will last through college and beyond.

How to Join

PAN participates in two different recruitment methods-formal recruitment and continuous open bidding. Formal recruitment is a week long process that occurs each fall. During formal recruitment, you will have the opportunity to meet and learn more about all 8 Panhellenic sororities. Formal recruitment is a mutual selection process that allows for both potential new members and chapters to select who they are interested in throughout the week. Continuous open bidding (COB) occurs outside of formal recruitment and is an informal way for chapters to continue their recruitment process.

Visit the national website at www.npcwomen.org

ΑΔΠ

Alpha Delta Pi



Nickname | A-D-Pi
Colors | Azure Blue and White
Mascot | Lion
Flower/Symbol | Woodland Violet, the Diamond
National Website | www.alphadeltapi.org
Founded | Wesleyan Female College, 1851
UNT | 1953
Philanthropy | Ronald McDonald House
Motto | "We Live for Each Other"



ΑΦ

Alpha Phi



Nickname | A-Phi
Colors | Silver and Bordeaux
Mascot | Phi Bear
Flower/Symbol | Lily of the Valley, Ivy Leaf, Forget-Me-Not
National Website | www.alphaphi.org
Founded | Syracuse University, 1872
UNT | 1954
Philanthropy | Alpha Phi Foundation for Cardiac Care and Research
Motto | "Union Hand in Hand"



XΩ

Chi Omega



Nickname | Chi-O
Colors | Cardinal and Straw
Mascot | Owl
Flower/Symbol | White Carnation, Skull & Crossbones
National Website | www.chiomega.com
Founded | University of Arkansas, 1895
UNT | 1953
Philanthropy | Make a Wish Foundation
Motto | "Hellenic Culture, Christian Ideals"



ΔΓ

Delta Gamma



Nickname | D-G
Colors | Bronze, Pink, and Blue
Flower/Symbol | Cream-Colored Rose, Anchor
Mascot | Hannah Doll
National Website | www.deltagamma.org
Founded | Lewis School for Girls, 1873
UNT | 1953
Philanthropy | Service for Sight
Motto | "Do Good"



KΔ

Kappa Delta



Nickname | K-D
Colors | Olive Green and Pearl White
Mascot | Teddy Bear
Flower/Symbol | White Rose, Dagger, Nautilus Shell
National Website | www.kappadelta.org
Founded | State Female Normal School, 1897
UNT | 1954
Philanthropy | Girl Scouts of America, Prevent Child Abuse America
Motto | "Let us strive for that which is honorable, beautiful, and highest"



KKΓ

Kappa Kappa Gamma



Nickname | Kappa
Mascot | Owl
Colors | Light Blue and Dark Blue
Flower/Symbol | Fleur-de-Lis Iris, Key
National Website | www.kappakappagamma.org
Founded | Monmouth College, 1870
UNT | 1989
Philanthropy | Reading is Fundamental
Motto | "To Be Womanly and True"



ΠΒΦ

Pi Beta Phi



Nickname | Pi-Phi
Colors | Wine and Silver Blue
Mascot | Angel
Flower/Symbol | Wine Carnation, Arrow
National Website | www.pibetaphi.org
Founded | Monmouth College, 1867
UNT | 1976
Philanthropy | Literacy/Champions Are Readers
Motto | "Pi Beta Phi"



ZTA

Zeta Tau Alpha



Nickname | Zeta
Colors | Turquoise and Steel Gray
Flower/Symbol | White Violet, Five Point Crown, Strawberry Bunny
National Website | www.zetataualpha.org
Founded | State Female Normal School, 1898
UNT | 1953
Philanthropy | Breast Cancer Awareness and Education
Motto | "Seek the Noblest"



FREQUENTLY ASKED QUESTIONS

for parents, students, and families.

WHAT DOES GREEK LIFE HAVE TO OFFER UNIVERSITY OF NORTH TEXAS STUDENTS?

The Greek community at the University of North Texas is comprised of 38 (inter)nationally affiliated Greek letter organizations. Many students find that joining a fraternity or sorority provides them a home away from home and a foundation upon which to build a new and exciting future. In addition, the University of North Texas Greek community opens many doors by providing leadership, academic, service, social and interpersonal opportunities. The decision to join a Greek letter organization is a lifelong commitment with an organization that stands for the best things college has to offer. These processes vary by council and are further explained on the correlating council page.

HOW DOES A STUDENT BECOME INVOLVED WITH GREEK LIFE AT UNT?

Each semester, the four governing councils of all Greek organizations host a number of organized events – opportunities for non-affiliated students to become acquainted with the Greek community. During recruitment, non-affiliated students have the opportunity to visit all fraternities and sororities to meet the members and decide which, if any, of the chapters' best suit their needs. The Recruitment process is one of mutual selection in which fraternity and sorority members invite individuals to be a part of their organizations, and likewise, potential members select the chapters that are best suited for them. Some recruitment processes are very casual, while others are more formal in structure. These processes vary by council and are further explained on the correlating council page.

WILL GREEK LIFE ASSIST STUDENTS AS THEY BEGIN THEIR CAREERS?

One of the tremendous assets of affiliation with a Greek-letter organization is the nationwide network of alumni/ae members of the organization. As a student prepares for entry into the career world, alumni/ae members can assist in job placement through their knowledge of where jobs are and who is hiring. In addition, Greek Life will assist students in developing transferable skills that will be needed in the career world, such as management, leadership development, communications, and more.

WHAT KINDS OF COSTS ARE INVOLVED IN BEING GREEK?

Joining a fraternity or a sorority does have a financial commitment. The chapters are self-supporting through dues paid by their members. When students join a Greek letter organization, they also agree to pay dues and fees while in school to maintain membership. Although chapters may make accommodations for special needs, students should discuss the financial obligations with their parents or guardians before deciding to join. Each chapter has different dues for membership that cover such things as chapter and national dues, dues to the Greek governing council, your membership badge, social activities, resources, and other miscellaneous costs. Many chapters also offer payment plan options for those interested.

WHAT IS THE TIME COMMITMENT INVOLVED IN BELONGING TO A GREEK-LETTER ORGANIZATION?

While there are certain attendance requirements, a well-balanced schedule is encouraged for all members. Through involvement with the chapter, students will learn to better manage their time by balancing academics, work, and other commitments. Academic commitments are the first priority and many Greek members hold student jobs as well. Greek organizations are conscientious of the full schedules that most students have and offer flexibility as much as possible. Students find that being active in a fraternity or sorority is well worth the time they put into it.



DO YOU HAVE ANY HELPFUL HINTS FOR PARENTS AND GUARDIANS?

The following suggestions may help ease your student's transition to both UNT and the sorority/fraternity community:

- Take time to find out more about UNT's Greek community and the chapter your student is interested in by visiting <http://greeklife.unt.edu> as well as the organization's national web site.
- Be supportive of your student's choice of sorority or fraternity.
- Ask for details about the financial responsibilities of membership. Determine with your student who will pay and what limitations these expenses may impose. For many organizations, one-time international dues are paid during the first year, so expect the first year to be the most expensive.
- Know names and phone numbers of the organization president, new member educator, big sister/big brother, organization advisor, and house director, if there is one.
- Initiation is an important time for the new initiates. Be supportive and respectful of this time for your student.
- Expect to see many new t-shirts, photos, and sorority/fraternity paraphernalia.
- Encourage your student to be part of the university community, along with their involvement in a sorority/fraternity, and to take advantage of the many resources available on campus.

HAVE A QUESTION OR CONCERN?

College students may encounter challenges throughout their time at The University of North Texas. The Dean of Students office can provide support and assistance. We encourage you to contact us for help with finding the appropriate resource. Call us at (940) 565-2648, e-mail us at Deanofstudents@unt.edu

CAMPUS OFFICES AND HELPFUL RESOURCES

Career Center

Chestnut Hall, Suite 103
Phone Number: (940) 565-2105
careercenter.unt.edu

CARE Team

Phone Number: (940) 565-4373
studentaffairs.unt.edu/care

Center for Leadership and Service

Phone: (940) 565-3021
leadandserve.unt.edu

Center for Student Affairs at Discovery Park

Discovery Park, G140
Phone Number: (940) 269-5847

Counseling & Testing Services

Chestnut Hall, Suite 311
Phone Number: (940) 565-2741
counselingandtesting.unt.edu

Dean of Students

Phone Number: (940) 565-2039
Email: deanofstudents@unt.edu

Financial Aid

Eagle Student Services Center, 228
Phone Number: (940) 565-2302
financialaid.unt.edu

Honors College

Sage Hall, 257
Phone Number: (940) 565-3305
honors.unt.edu

Housing and Residence Life

Crumley Hall
Phone Number: (940) 565-2610
Email: housinginfo@unt.edu
or reslife.unt.edu

Learning Center

Sage Hall, Room 315
Phone Number: (940) 369-7006
learningcenter.unt.edu

Mean Green Athletics

www.meangreensports.com
Phone Number: (940) 565-2527
meangreensports.com

Office of Disabilities /Accomodations

Sage Hall, 167
Phone Number: (940)-565-4323
disability.unt.edu/about

Office of the Registrar

Eagle Student Services Center
Phone Number: (940) 565-2000
unt.edu/registrar

Orientation and Transition Programs/ Parent Programs

Phone Number: (940) 565-4198
transition.unt.edu

Recreational Sports

Pohl Recreation Center
Phone Number: (940) 565-2275
recreports.unt.edu

SARC (Substance Abuse Resource Center)

Phone Number: (940) 565-2787
sarc.unt.edu

Student Accounting

Eagle Student Services Center, 105
Phone Number: (940) 565-3225
unt.edu/saucs/

Student Activities Center

Phone Number: (940) 565-3807
studentactivities.unt.edu

Student Health and Wellness Center

Chestnut Hall, 1800 West Chestnut
Phone Number: (940) 565-2333
healthcenter.unt.edu

Student Legal Services

Phone Number: (940) 565-2614
studentlegal.unt.edu

Student Money Management Center

Chestnut Hall, Suite 313
Phone Number: (940) 369-7761
moneymangement.unt.edu

Survivor Advocate

Phone Number: (940) 565-2648
Email: Deanofstudents@unt.edu

Veterans Center

Sage Hall
Phone Number: (940) 565-2648
veteranscenter.unt.edu

Greek Life Center

Phone Number: (940)369-8463
GreekLife.unt.edu
621 South Welch Street



THE GREEK LIFE CENTER

The University of North Texas's Greek Life Center is one of the first freestanding structures in the nation to solely accommodate the efforts of the university's fraternity and sorority community. With its original opening in April 2014, the official ribbon cutting ceremony was held during the Fall 2014 Homecoming weekend, where University officials, community leaders, UNT students, and alumni culminated the new existence of the Greek Life Center and honored the legacies that it stands upon. During the ribbon cutting ceremony Greek alumnae were able to learn about the building and its function, while being able to participate in a historical campus moment during one of the most important times of the year for the UNT community.

The Greek Life Center is centrally located between what is known as fraternity and sorority row, and with a large attached parking lot that is easily accessible to our fraternity and sorority students. The Greek Life Center houses the offices of the Greek Life professional staff and also offers two programmable spaces including a conference room and a chapter room. The small conference room is equipped with Wi-Fi and HD technology offering the perfect environment for a small committee meeting or interview session. The Chapter room is specially designed for any of our chapters to hold their rituals and other events. Student organizations, staff and faculty have the ability to utilize the room's unique capabilities, which includes a state of the art sound system, multiple-direction projectors and ample seating and table options that can hold up to 130 people.

Not only is there space for events, but the Greek Life Center offers a welcoming environment with our Springer Family Rotunda, Geezle Conference Room, and Bracken Family Reception Room. The Springer Family Rotunda invites you in with its architectural design and a beautiful mural that surrounds the rotunda area. The Bracken Family Reception area is where visitors can meet with our staff or Greek Life representatives and learn more about our community in a nice friendly atmosphere. The Geezle Conference Room, named after UNT's first fraternity, is a place where all Greeks can have a small meeting with AV equipment and internet. More specifically for our Greek students, the Greek Life Center also includes a Council room, where each of our four councils, and in-house graduate assistant has their own desk and computer to complete things such as office hours and event planning where they need quick, direct contact with any of the professional staff.

Of the current 38 chapters, only 16 have a chapter facility that they can use to hold a meeting, ritual, and event space, the Greek Life Center acts as a safe place for all of our chapters to hold their activities and stay connected to our UNT community. The center offers a variety of opportunities for not only Greek students, but our campus as a whole. Its location and beautiful exterior are a draw to the campus.



GREEK LIFE
Division of
Student Affairs

UNT[®]

GREEK LIFE CENTER
621 S. WELCH STREET DENTON, TX 76201
MAILING: 1155 UNION CIRCLE #310728,
DENTON, TX 76203
PHONE: 940-369-8463
WEBSITE: GREEKLIFE.UNT.EDU
EMAIL: GREEKLIFE@UNT.EDU