

Transmission of material in this release is embargoed until 8:30 a.m. (EDT) Thursday, March 17, 2011

USDL-11-0350

Technical information: (202) 691-7000 • Reed.Steve@bls.gov • www.bls.gov/cpi
Media Contact: (202) 691-5902 • PressOffice@bls.gov

(NOTE: This release was reissued on Friday, April 15, 2011, to correct errors in the January-February 2011 data. Corrections have been made to Table 7. There were no changes made to the text of the release.)

CONSUMER PRICE INDEX – FEBRUARY 2011

The Consumer Price Index for All Urban Consumers (CPI-U) increased 0.5 percent in February on a seasonally adjusted basis, the U.S. Bureau of Labor Statistics reported today. Over the last 12 months, the all items index increased 2.1 percent before seasonal adjustment.

Though the seasonally adjusted increase in the all items index was broad-based, the energy index was once again the largest contributor. The gasoline index continued to rise, and the index for household energy turned up in February with all of its components posting increases. Food indexes also continued to rise in February, with sharp increases in the indexes for fresh vegetables and meats contributing to a 0.8 percent increase in the food at home index, the largest since July 2008.

The index for all items less food and energy rose in February as well. Most of its major components posted increases, including the indexes for shelter, new vehicles, medical care, and airline fares. The apparel index was one of the few to decline.

The 12-month changes in major indexes continue to trend upward. The all items index increased 2.1 percent for the 12 months ending February; the figure was 1.1 percent as recently as November. The 12-month increase in the index for all items less food and energy reached 1.1 percent in February after being as low as 0.6 percent in October. The 11.0 percent increase in the energy index is the largest since May 2010, while the 2.3 percent rise in the food index is the largest since May 2009.

Chart 1. One-month percent change in CPI for All Urban Consumers (CPI-U), seasonally adjusted, Feb. 2010 - Feb. 2011
Percent change

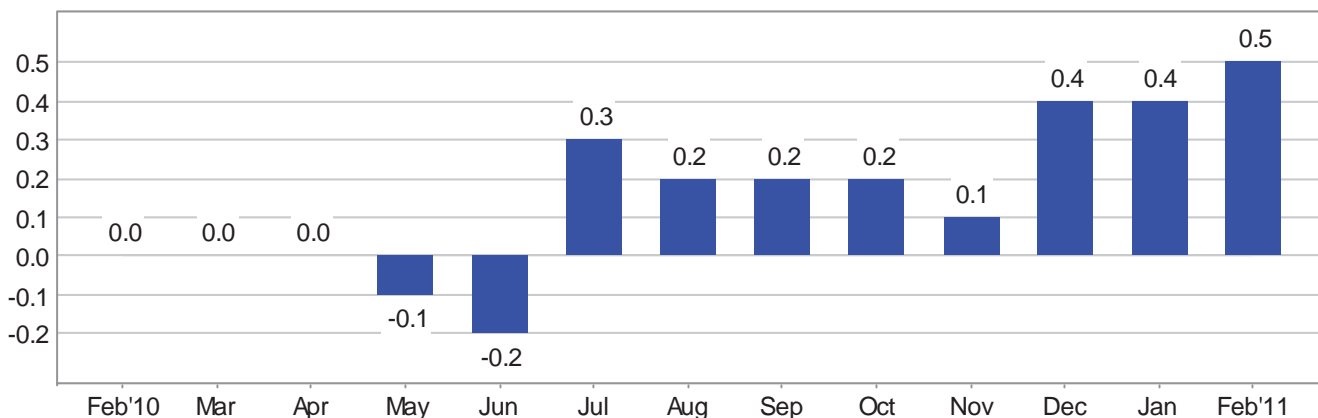


Chart 2. 12-month percent change in CPI for All Urban Consumers (CPI-U), not seasonally adjusted, Feb. 2010 - Feb. 2011

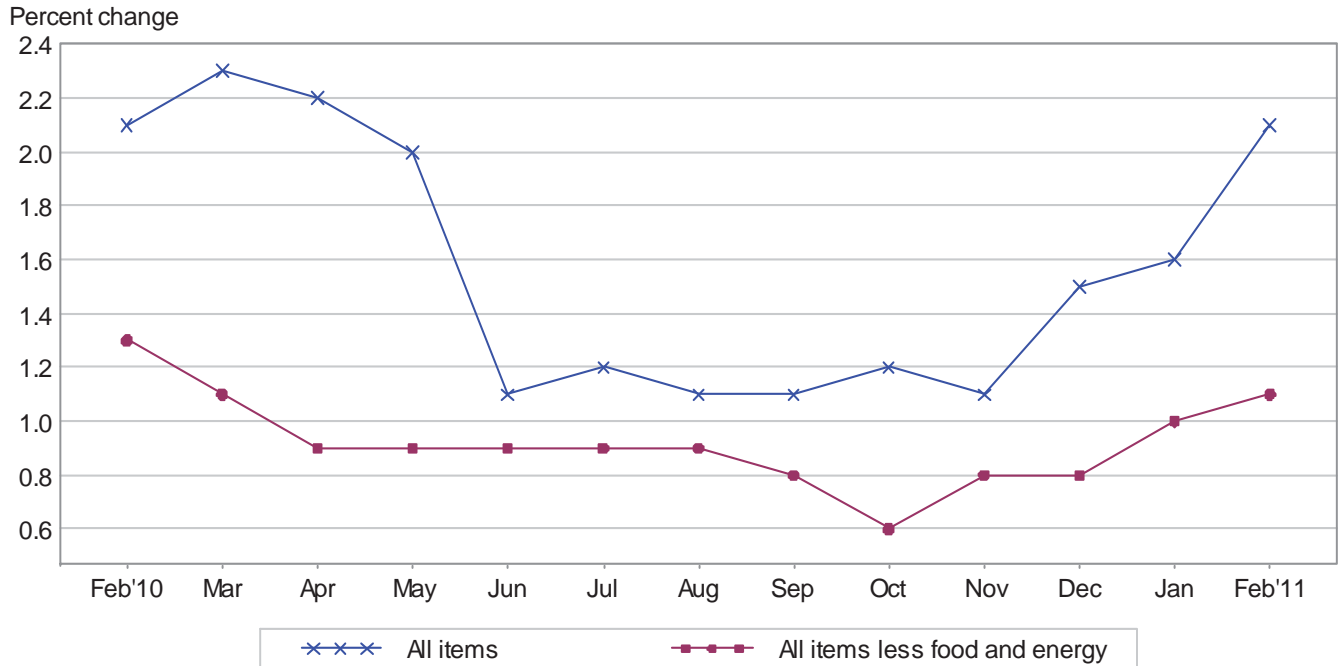


Table A. Percent changes in CPI for All Urban Consumers (CPI-U): U.S. city average

	Seasonally adjusted changes from preceding month							Un-adjusted 12-mos. ended Feb. 2011
	Aug. 2010	Sep. 2010	Oct. 2010	Nov. 2010	Dec. 2010	Jan. 2011	Feb. 2011	
All items2	.2	.2	.1	.4	.4	.5	2.1
Food1	.3	.1	.2	.1	.5	.6	2.3
Food at home0	.4	.1	.2	.2	.7	.8	2.8
Food away from home ¹3	.3	.1	.1	.1	.2	.2	1.6
Energy	1.6	1.1	2.5	.1	4.0	2.1	3.4	11.0
Energy commodities	2.6	2.2	4.4	.7	6.4	4.0	4.8	19.3
Gasoline (all types)	2.9	2.2	4.5	.7	6.7	3.5	4.7	19.2
Fuel oil ¹9	.8	4.7	4.2	4.9	6.8	5.8	27.1
Energy services4	-.4	.0	-.8	.6	-.6	1.1	.2
Electricity1	-.1	.2	.6	.3	-.5	.4	2.2
Utility (piped) gas service	1.4	-1.4	-.6	-5.3	1.7	-1.2	3.4	-5.9
All items less food and energy1	.0	.0	.1	.1	.2	.2	1.1
Commodities less food and energy commodities1	-.2	-.2	.0	-.1	.2	.2	.0
New vehicles2	.1	-.1	-.2	-.1	-.1	1.0	.9
Used cars and trucks9	-.4	-.6	.1	-.1	-.3	.1	1.9
Apparel0	-.5	-.2	.1	.1	1.0	-.9	-.4
Medical care commodities ¹2	.3	.1	.2	.1	.5	.7	2.7
Services less energy services0	.1	.1	.2	.1	.1	.2	1.5
Shelter0	.0	.1	.1	.1	.1	.1	.8
Transportation services0	.3	.3	.4	.2	.6	.5	3.5
Medical care services2	.7	.2	.2	.3	-.1	.4	3.0

¹ Not seasonally adjusted.

Consumer Price Index Data for February 2011

Food

The food index rose 0.6 percent in February after rising 0.5 percent in January. The food at home index, up 0.7 percent in January, rose 0.8 percent in February. Five of the six major grocery store food groups posted increases. The index for fruits and vegetables increased the most, rising 2.2 percent as the fresh vegetables index increased 6.7 percent. The index for meats, poultry, fish, and eggs advanced 1.2 percent with the index for meats up 1.9 percent. The dairy and related products index increased 0.6 percent, as did the index for other food at home. The index for nonalcoholic beverages, which rose 1.5 percent in January, advanced 0.2 percent in February. The index for cereals and bakery products, which was unchanged in February, was the only major grocery store food group not to rise. Over the past 12 months, the index for food at home has risen 2.8 percent with all six groups increasing. The index for food away from home rose 0.2 percent in February and has risen 1.6 percent over the past 12 months.

Energy

The energy index rose 3.4 percent in February and has risen 9.8 percent over the last three months. The gasoline index continued to increase, climbing 4.7 percent in February after a 3.5 percent rise in January. (Before seasonal adjustment, gasoline prices rose 2.2 percent in February.) The index for household energy, which fell 0.2 percent in January, rose 1.3 percent in February. The fuel oil index rose 5.8 percent, the index for natural gas advanced 3.4 percent, and the electricity index increased 0.4 percent. The index for gasoline has risen 19.2 percent over the last 12 months; the household energy index has increased 1.4 percent over that span, with the fuel oil and electricity indexes rising but the index for natural gas declining.

All items less food and energy

The index for all items less food and energy rose 0.2 percent in February, the same increase as in January, with most of its major components posting increases. The shelter index rose 0.1 percent in February, with rent and owners' equivalent rent both also rising 0.1 percent. After declining in January, the new vehicles index rose 1.0 percent in February, its largest increase since October 2009. The medical care index rose 0.4 percent in February after a 0.1 percent increase in January. The index for medical care commodities rose 0.7 percent and the medical care services index advanced 0.4 percent. The index for airline fares increased 2.1 percent in February, its fourth consecutive monthly increase of over two percent. The index for recreation rose 0.3 percent, its second straight monthly increase. The indexes for household furnishings and operations and for used cars and trucks both edged up 0.1 percent in February. In contrast to these increases, the apparel index turned down in February, declining 0.9 percent after increasing 1.0 percent in January.

The index for all items less food and energy increased 1.1 percent over the last 12 months. The shelter index has gone up 0.8 percent over that time period with the rent index up 1.1 percent. The indexes for airline fares, medical care, new vehicles, and used cars and trucks were among the indexes that increased over that span. Indexes that declined include household furnishings and operations, apparel, and recreation.

Not seasonally adjusted CPI measures

The Consumer Price Index for All Urban Consumers (CPI-U) increased 2.1 percent over the last 12 months to an index level of 221.309 (1982-84=100). For the month, the index increased 0.5 percent prior to seasonal adjustment.

The Consumer Price Index for Urban Wage Earners and Clerical Workers (CPI-W) increased 2.3 percent over the last 12 months to an index level of 217.535 (1982-84=100). For the month, the index rose 0.5 percent prior to seasonal adjustment.

The Chained Consumer Price Index for All Urban Consumers (C-CPI-U) increased 2.0 percent over the last 12 months. For the month, the index increased 0.5 percent on a not seasonally adjusted basis. Please note that the indexes for the post-2009 period are subject to revision.

The Consumer Price Index for March 2011 is scheduled to be released on Friday, April 15, 2011, at 8:30 a.m. (EDT).

Facilities for Sensory Impaired

Information from this release will be made available to sensory impaired individuals upon request. Voice phone: 202-691-5200, Federal Relay Services: 1-800-877-8339.

Brief Explanation of the CPI

The Consumer Price Index (CPI) is a measure of the average change in prices over time of goods and services purchased by households. The Bureau of Labor Statistics publishes CPIs for two population groups: (1) the CPI for Urban Wage Earners and Clerical Workers (CPI-W), which covers households of wage earners and clerical workers that comprise approximately 32 percent of the total population and (2) the CPI for All Urban Consumers (CPI-U) and the Chained CPI for All Urban Consumers (C-CPI-U), which cover approximately 87 percent of the total population and include in addition to wage earners and clerical worker households, groups such as professional, managerial, and technical workers, the self-employed, short-term workers, the unemployed, and retirees and others not in the labor force.

The CPIs are based on prices of food, clothing, shelter, and fuels, transportation fares, charges for doctors' and dentists' services, drugs, and other goods and services that people buy for day-to-day living. Prices are collected each month in 87 urban areas across the country from about 4,000 housing units and approximately 26,000 retail establishments-department stores, supermarkets, hospitals, filling stations, and other types of stores and service establishments. All taxes directly associated with the purchase and use of items are included in the index. Prices of fuels and a few other items are obtained every month in all 87 locations. Prices of most other commodities and services are collected every month in the three largest geographic areas and every other month in other areas. Prices of most goods and services are obtained by personal visits or telephone calls of the Bureau's trained representatives.

In calculating the index, price changes for the various items in each location are averaged together with weights, which represent their importance in the spending of the appropriate population group. Local data are then combined to obtain a U.S. city average. For the CPI-U and CPI-W separate indexes are also published by size of city, by region of the country, for cross-classifications of regions and population-size classes, and for 27 local areas. Area indexes do not measure differences in the level of prices among cities; they only measure the average change in prices for each area since the base period. For the C-CPI-U data are issued only at the national level. It is important to note that the CPI-U and CPI-W are considered final when released, but the C-CPI-U is issued in preliminary form and subject to two annual revisions.

The index measures price change from a designed reference date. For the CPI-U and the CPI-W the reference base is 1982-84 equals 100. The reference base for the C-CPI-U is December 1999 equals 100. An increase of 16.5 percent from the reference base, for example, is shown as 116.500. This change can also be expressed in dollars as follows: the price of a base period market basket of goods and services in the CPI has risen from \$10 in 1982-84 to \$11.65.

For further details visit the CPI home page on the Internet at <http://www.bls.gov/cpi/> or contact our CPI Information and Analysis Section on (202) 691-7000.

Note on Sampling Error in the Consumer Price Index

The CPI is a statistical estimate that is subject to sampling error because it is based upon a sample of retail prices and not the complete universe of all prices. BLS calculates and publishes estimates of the 1-month, 2-month, 6-month and 12-month percent change standard errors annually, for the CPI-U. These standard error estimates can be used to construct confidence intervals for hypothesis testing. For example, the estimated standard error of the 1 month percent change is 0.03 percent for the U.S. All Items Consumer Price Index. This means that if we repeatedly sample from the universe of all retail prices using the same methodology, and estimate a percentage change for each sample, then 95% of these estimates would be within 0.06 percent of the 1 month percentage change based on all retail prices. For example, for a 1-month change of 0.2 percent in the All Items CPI for All Urban Consumers, we are 95 percent confident that the actual percent change based on all retail prices would fall between 0.14 and 0.26 percent. For the latest data, including information on how to use the estimates of standard error, see “Variance Estimates for Price Changes in the Consumer Price Index, January-December 2010”. These data are available on the CPI home page (<http://www.bls.gov/cpi>), or by using the following link <http://www.bls.gov/cpi/cpivar2010.pdf>

Calculating Index Changes

Movements of the indexes from one month to another are usually expressed as percent changes rather than changes in index points, because index point changes are affected by the level of the index in relation to its base period while percent changes are not. The example below illustrates the computation of index point and percent changes.

Percent changes for 3-month and 6-month periods are expressed as annual rates and are computed according to the standard formula for compound growth rates. These data indicate what the percent change would be if the current rate were maintained for a 12-month period.

Index Point Change

CPI	202.416
Less previous index	201.800
Equals index point change	.616

Percent Change

Index point difference	.616
Divided by the previous index	201.800
Equals	0.003
Results multiplied by one hundred	0.003x100
Equals percent change	0.3

Regions Defined

The states in the four regions shown in Tables 3 and 6 are listed below.

The Northeast--Connecticut, Maine, Massachusetts, New Hampshire, New York, New Jersey, Pennsylvania, Rhode Island, and Vermont.

The Midwest--Illinois, Indiana, Iowa, Kansas, Michigan, Minnesota, Missouri, Nebraska, North Dakota, Ohio, South Dakota, and Wisconsin.

The South--Alabama, Arkansas, Delaware, Florida, Georgia, Kentucky, Louisiana, Maryland, Mississippi, North Carolina, Oklahoma, South Carolina, Tennessee, Texas, Virginia, West Virginia, and the District of Columbia.

The West--Alaska, Arizona, California, Colorado, Hawaii, Idaho, Montana, Nevada, New Mexico, Oregon, Utah, Washington, and Wyoming.

A Note on Seasonally Adjusted and Unadjusted Data

Because price data are used for different purposes by different groups, the Bureau of Labor Statistics publishes seasonally adjusted as well as unadjusted changes each month.

For analyzing general price trends in the economy, seasonally adjusted changes are usually preferred since they eliminate the effect of changes that normally occur at the same time and in about the same magnitude every year--such as price movements resulting from changing climatic conditions, production cycles, model changeovers, holidays, and sales.

The unadjusted data are of primary interest to consumers concerned about the prices they actually pay. Unadjusted data also are used extensively for escalation purposes. Many collective bargaining contract agreements and pension plans, for example, tie compensation changes to the Consumer Price Index before adjustment for seasonal variation.

Seasonal factors used in computing the seasonally adjusted indexes are derived by the X-12-ARIMA Seasonal Adjustment Method. Seasonally adjusted indexes and seasonal factors are computed annually. Each year, the last 5 years of seasonally adjusted data are revised. Data from January 2006 through December 2010 were replaced in January 2011. Exceptions to the usual revision schedule were: the updated seasonal data at the end of 1977 replaced data from 1967 through 1977; and, in January 2002, dependently seasonally adjusted series were revised for January 1987-December 2001 as a result of a change in the aggregation weights for dependently adjusted series. For further information, please see "Aggregation of Dependently Adjusted Seasonally Adjusted Series," in the October 2001 issue of the CPI Detailed Report.

Effective with the publication of data from January 2006 through December 2010 in January 2011, the Video and audio series and the Information technology, hardware and services series were changed from independently adjusted to dependently adjusted. This resulted in an increase in the number of seasonal components used in deriving seasonal movement of the All items and 54 other lower level aggregations, from 73 for the publication of January 1998 through December 2005 data to 82 for the publication of seasonally adjusted data for January 2006 and later. Each year the seasonal status of every series is reevaluated based upon certain statistical criteria. If any of the 82 components change their seasonal

adjustment status from seasonally adjusted to not seasonally adjusted, not seasonally adjusted data will be used in the aggregation of the dependent series for the last 5 years, but the seasonally adjusted indexes before that period will not be changed. Note: 37 of the 82 components are not seasonally adjusted for 2011.

Seasonally adjusted data, including the all items index levels, are subject to revision for up to five years after their original release. For this reason, BLS advises against the use of these data in escalation agreements.

Effective with the calculation of the seasonal factors for 1990, the Bureau of Labor Statistics has used an enhanced seasonal adjustment procedure called Intervention Analysis Seasonal Adjustment for some CPI series. Intervention Analysis Seasonal Adjustment allows for better estimates of seasonally adjusted data. Extreme values and/or sharp movements which might distort the seasonal pattern are estimated and removed from the data prior to calculation of seasonal factors. Beginning with the calculation of seasonal factors for 1996, X-12-ARIMA software was used for Intervention Analysis Seasonal Adjustment.

For the seasonal factors introduced in January 2011, BLS adjusted 29 series using Intervention Analysis Seasonal Adjustment, including selected food and beverage items, motor fuels, electricity and vehicles. For example, this procedure was used for the Motor fuel series to offset the effects of events such as damage to oil refineries from Hurricane Katrina.

For a complete list of Intervention Analysis Seasonal Adjustment series and explanations, please refer to the article "Intervention Analysis Seasonal Adjustment", located on our website at <http://www.bls.gov/cpi/cpisapage.htm>.

For additional information on seasonal adjustment in the CPI, please write to the Bureau of Labor Statistics, Division of Consumer Prices and Price Indexes, Washington, DC 20212 or contact David Levin at (202) 691-6968, or by e-mail at Levin.David@bls.gov. If you have general questions about the CPI, please call our information staff at (202) 691-7000.

Table 1. Consumer Price Index for All Urban Consumers (CPI-U): U.S. city average, by expenditure category and commodity and service group

(1982-84=100, unless otherwise noted)

CPI-U Expenditure category	Relative importance, December 2010	Unadjusted indexes		Unadjusted percent change to Feb. 2011 from—		Seasonally adjusted percent change from—		
		Jan. 2011	Feb. 2011	Feb. 2010	Jan. 2011	Nov. to Dec.	Dec. to Jan.	Jan. to Feb.
All items	100.000	220.223	221.309	2.1	0.5	0.4	0.4	0.5
All items (1967=100)	-	659.692	662.943	-	-	-	-	-
Food and beverages	14.792	223.160	224.039	2.2	.4	.1	.5	.5
Food	13.742	222.912	223.799	2.3	.4	.1	.5	.6
Food at home	7.816	220.016	221.241	2.8	.6	.2	.7	.8
Cereals and bakery products	1.090	253.349	254.238	1.1	.4	.4	.8	.0
Meats, poultry, fish, and eggs	1.813	214.344	216.175	6.8	.9	-.3	.9	1.2
Dairy and related products ¹839	202.349	203.510	2.4	.6	.4	.1	.6
Fruits and vegetables	1.152	285.619	286.766	4.3	.4	1.8	1.3	2.2
Nonalcoholic beverages and beverage materials926	164.019	163.734	.6	-.2	-1.1	1.5	.2
Other food at home	1.996	191.468	193.055	.8	.8	.1	.2	.6
Sugar and sweets ¹297	202.648	204.168	1.1	.8	1.3	-.2	.8
Fats and oils232	207.813	210.508	4.8	1.3	-.4	2.1	.9
Other foods	1.466	203.610	205.174	.1	.8	-.1	-.1	.5
Other miscellaneous foods ^{1 2}432	120.930	121.438	.2	.4	1.5	-1.2	.4
Food away from home ¹	5.926	228.181	228.606	1.6	.2	.1	.2	.2
Other food away from home ^{1 2}329	160.643	161.836	2.1	.7	.2	.0	.7
Alcoholic beverages	1.051	224.975	225.749	1.5	.3	.0	.2	.2
Housing	41.460	216.739	217.259	.7	.2	.2	.1	.3
Shelter	31.955	249.462	249.886	.8	.2	.1	.1	.1
Rent of primary residence ³	5.925	251.555	251.829	1.1	.1	.2	.2	.1
Lodging away from home ²776	128.630	131.572	2.0	2.3	1.0	-1.0	.0
Owners' equivalent rent of residences ^{3 4}	24.905	257.775	258.073	.6	.1	.1	.1	.1
Owners' equivalent rent of primary residence ^{3 4}	23.310	257.764	258.060	.6	.1	.1	.1	.1
Tenants' and household insurance ^{1 2}349	126.192	126.529	1.7	.3	-1.0	.0	.3
Fuels and utilities	5.096	214.045	215.587	2.3	.7	.8	-.1	1.2
Household energy	4.000	187.704	189.006	1.4	.7	.8	-.2	1.3
Fuel oil and other fuels ¹309	314.130	326.919	17.9	4.1	4.1	5.4	4.1
Energy services ³	3.691	189.088	189.837	.2	.4	.6	-.6	1.1
Water and sewer and trash collection services ²	1.095	175.754	177.194	5.4	.8	.5	.3	.8
Household furnishings and operations	4.409	124.342	124.576	-1.9	.2	-.1	.1	.1
Household operations ^{1 2}772	151.189	151.358	1.1	.1	.3	.4	.1
Apparel	3.601	116.664	118.369	-.4	1.5	.1	1.0	-.9
Men's and boys' apparel882	109.985	110.962	-.3	.9	-.3	1.0	-.9
Women's and girls' apparel	1.520	102.438	105.076	-1.6	2.6	.0	1.5	-1.2
Infants' and toddlers' apparel192	110.096	110.101	-3.7	.0	.4	-1.9	-1.6
Footwear700	126.286	126.830	-.7	.4	-.1	.8	-.4
Transportation	17.308	200.835	203.037	7.1	1.1	2.0	1.3	1.9
Private transportation	16.082	196.087	198.073	6.9	1.0	2.0	1.3	1.9
New and used motor vehicles ²	6.333	97.128	97.633	.6	.5	-.1	-.2	.5
New vehicles	3.513	138.925	140.158	.9	.9	-.1	-.1	1.0
Used cars and trucks	2.055	142.555	142.937	1.9	.3	-.1	-.3	.1
Motor fuel	5.079	265.703	271.843	19.4	2.3	6.5	3.9	4.8
Gasoline (all types)	4.865	264.979	270.822	19.2	2.2	6.7	3.5	4.7
Motor vehicle parts and equipment ¹408	140.487	140.912	3.9	.3	.3	.9	.3
Motor vehicle maintenance and repair ¹	1.172	250.726	250.851	2.0	.0	.1	.2	.0
Public transportation	1.227	259.634	265.327	9.7	2.2	1.4	1.7	1.9
Medical care	6.627	393.858	397.065	2.9	.8	.2	.1	.4
Medical care commodities ¹	1.633	318.929	321.186	2.7	.7	.1	.5	.7
Medical care services	4.994	417.025	420.567	3.0	.8	.3	-.1	.4
Professional services	2.830	331.921	334.296	2.6	.7	.1	.0	.5

See footnotes at end of table.

Table 1. Consumer Price Index for All Urban Consumers (CPI-U): U.S. city average, by expenditure category and commodity and service group-Continued

(1982-84=100, unless otherwise noted)

CPI-U	Relative importance, December 2010	Unadjusted indexes		Unadjusted percent change to Feb. 2011 from—		Seasonally adjusted percent change from—		
		Jan. 2011	Feb. 2011	Feb. 2010	Jan. 2011	Nov. to Dec.	Dec. to Jan.	Jan. to Feb.
Expenditure category								
Hospital and related services	1.703	625.897	633.413	5.8	1.2	0.7	-0.1	0.5
Recreation ²	6.293	112.638	113.183	-.1	.5	-.2	.2	.3
Video and audio ²	1.816	97.325	98.268	-1.3	1.0	-.7	.0	.5
Education and communication ²	6.421	130.665	130.692	1.2	.0	-.1	.2	.2
Education ²	3.107	204.057	204.153	4.1	.0	.4	.6	.4
Educational books and supplies204	522.026	520.778	3.6	-.2	.7	1.2	-.2
Tuition, other school fees, and childcare	2.903	586.386	586.782	4.1	.1	.4	.5	.4
Communication ²	3.313	83.783	83.779	-1.3	.0	-.6	-.2	.0
Information and information processing ²	3.138	80.422	80.417	-1.6	.0	-.7	-.4	.0
Telephone services ^{1 2}	2.334	101.412	101.316	-1.0	-.1	-.6	-.3	-.1
Information technology, hardware and services ⁵804	9.181	9.204	-3.5	.3	-.9	-.8	.2
Personal computers and peripheral equipment ⁶228	72.947	72.709	-6.7	-.3	-2.1	-1.7	-.5
Other goods and services	3.497	384.689	385.397	2.0	.2	.2	.1	.1
Tobacco and smoking products ¹906	828.079	829.535	5.6	.2	.8	.0	.2
Personal care	2.591	207.298	207.685	.8	.2	.0	.1	.1
Personal care products ¹671	160.920	161.325	-.4	.3	.2	.2	.3
Personal care services ¹638	229.933	230.177	.9	.1	.2	-.1	.1
Miscellaneous personal services	1.055	357.576	358.521	2.2	.3	.1	.1	.2
Commodity and service group								
Commodities	40.012	177.480	178.874	3.1	.8	.8	.9	1.0
Food and beverages	14.792	223.160	224.039	2.2	.4	.1	.5	.5
Commodities less food and beverages	25.219	153.102	154.657	3.7	1.0	1.3	1.1	1.2
Nondurables less food and beverages	15.474	196.248	198.885	6.4	1.3	2.2	1.8	1.6
Apparel	3.601	116.664	118.369	-.4	1.5	.1	1.0	-.9
Nondurables less food, beverages, and apparel	11.873	250.293	253.570	8.6	1.3	3.0	2.0	2.1
Durables	9.745	110.696	111.237	-.5	.5	.0	-.1	.4
Services	59.988	262.701	263.480	1.4	.3	.2	.1	.3
Rent of shelter ⁴	31.607	259.934	260.373	.7	.2	.2	-.1	.0
Tenants' and household insurance ^{1 2}349	126.192	126.529	1.7	.3	-1.0	.0	.3
Energy services ³	3.691	189.088	189.837	.2	.4	.6	-.6	1.1
Water and sewer and trash collection services ²	1.095	175.754	177.194	5.4	.8	.5	.3	.8
Household operations ^{1 2}772	151.189	151.358	1.1	.1	.3	.4	.1
Transportation services	6.140	263.984	265.354	3.5	.5	.2	.6	.5
Medical care services	4.994	417.025	420.567	3.0	.8	.3	-.1	.4
Other services	11.340	311.299	311.975	1.6	.2	.0	.2	.2
Special indexes								
All items less food	86.258	219.820	220.937	2.1	.5	.5	.4	.5
All items less shelter	68.045	211.273	212.633	2.7	.6	.6	.5	.7
All items less medical care	93.373	211.714	212.709	2.1	.5	.4	.4	.6
Commodities less food	26.270	155.682	157.221	3.6	1.0	1.2	1.1	1.2
Nondurables less food	16.525	198.007	200.543	6.1	1.3	2.2	1.6	1.5
Nondurables less food and apparel	12.923	246.854	249.895	8.0	1.2	2.7	1.9	2.0
Nondurables	30.266	210.205	212.056	4.3	.9	1.2	1.1	1.1
Services less rent of shelter ⁴	28.382	286.292	287.547	2.2	.4	.3	.1	.4
Services less medical care services	54.994	250.737	251.354	1.3	.2	.2	.0	.2
Energy	9.079	223.266	226.860	11.0	1.6	4.0	2.1	3.4
All items less energy	90.921	221.666	222.506	1.3	.4	.1	.2	.3
All items less food and energy	77.179	222.177	223.011	1.1	.4	.1	.2	.2
Commodities less food and energy commodities	20.882	142.845	143.712	.0	.6	-.1	.2	.2
Energy commodities	5.388	269.970	276.485	19.3	2.4	6.4	4.0	4.8
Services less energy services	56.297	270.199	270.982	1.5	.3	.1	.1	.2
Purchasing power of the consumer dollar (1982-84=\$1.00)	-	\$.454	\$.452	-	-	-	-	-
Purchasing power of the consumer dollar (1967=\$1.00)	-	\$.152	\$.151	-	-	-	-	-

¹ Not seasonally adjusted.

² Indexes on a December 1997=100 base.

³ This index series was calculated using a Laspeyres estimator. All other item stratum index series were calculated using a geometric means estimator.

⁴ Indexes on a December 1982=100 base.

⁵ Indexes on a December 1988=100 base.

⁶ Indexes on a December 2007=100 base.

- Data not available.

NOTE: Index applies to a month as a whole, not to any specific date.

Table 2. Consumer Price Index for All Urban Consumers (CPI-U): Seasonally adjusted U.S. city average, by expenditure category and commodity and service group

(1982-84=100, unless otherwise noted)

CPI-U	Seasonally adjusted indexes				Seasonally adjusted annual rate percent change for					
					3 months ended—			6 months ended—		
	Nov. 2010	Dec. 2010	Jan. 2011	Feb. 2011	May 2010	Aug. 2010	Nov. 2010	Feb. 2011	Aug. 2010	Feb. 2011
Expenditure category										
All items	219.240	220.186	221.062	222.270	-0.4	1.4	2.2	5.6	0.5	3.9
Food and beverages	221.237	221.524	222.602	223.779	1.6	.4	2.3	4.7	1.0	3.5
Food	220.884	221.190	222.314	223.544	1.6	.3	2.4	4.9	.9	3.7
Food at home	216.999	217.375	218.983	220.800	2.2	-6	2.8	7.2	.8	5.0
Cereals and bakery products	250.935	251.870	253.956	254.037	-1.0	-2.1	2.9	5.0	-1.6	3.9
Meats, poultry, fish, and eggs	212.605	211.984	213.942	216.444	8.5	3.8	7.7	7.4	6.2	7.6
Dairy and related products ¹	201.277	202.056	202.349	203.510	-2.1	2.0	5.3	4.5	-1	4.9
Fruits and vegetables	270.268	275.074	278.517	284.574	5.6	-9.1	.1	22.9	-2.0	10.9
Nonalcoholic beverages and beverage materials	162.016	160.310	162.636	162.958	-1.5	.3	1.2	2.3	-6	1.8
Other food at home	191.146	191.289	191.580	192.706	.2	-2	-2	3.3	.0	1.5
Sugar and sweets ¹	200.586	203.098	202.648	204.168	.4	-3.5	.5	7.3	-1.6	3.9
Fats and oils	203.503	202.623	206.878	208.833	1.8	1.1	5.6	10.9	1.4	8.2
Other foods	204.250	204.090	203.922	204.936	-1	.3	-1.3	1.4	.1	.0
Other miscellaneous foods ^{1 2}	120.623	122.419	120.930	121.438	-1.9	4.0	-3.8	2.7	1.0	-6
Food away from home ¹	227.512	227.722	228.181	228.606	.9	1.5	1.9	1.9	1.2	1.9
Other food away from home ^{1 2}	160.392	160.681	160.643	161.836	-1	2.5	2.2	3.7	1.2	2.9
Alcoholic beverages	224.449	224.494	224.951	225.415	.8	2.1	1.3	1.7	1.4	1.5
Housing	216.472	216.850	216.983	217.561	.0	.3	.4	2.0	.1	1.2
Shelter	249.019	249.321	249.523	249.867	.1	.7	.9	1.4	.4	1.1
Rent of primary residence ³	250.347	250.844	251.249	251.607	.2	.6	1.7	2.0	.4	1.9
Lodging away from home ²	132.990	134.258	132.892	132.915	14.3	2.9	-7.8	-2	8.5	-4.1
Owners' equivalent rent of residences ^{3 4}	257.166	257.402	257.659	258.016	-4	.6	.9	1.3	.1	1.1
Owners' equivalent rent of primary residence ^{3 4}	257.158	257.394	257.648	258.003	-4	.6	.9	1.3	.1	1.1
Tenants' and household insurance ^{1 2}	127.501	126.194	126.192	126.529	1.9	4.6	3.3	-3.0	3.3	.1
Fuels and utilities	214.089	215.738	215.607	218.231	2.3	-4	-5	8.0	.9	3.6
Household energy	188.274	189.867	189.553	192.096	1.4	-1.6	-2.0	8.4	-1	3.1
Fuel oil and other fuels ¹	286.367	298.037	314.130	326.919	-6.6	-13.1	40.1	69.9	-9.9	54.3
Energy services ³	191.182	192.310	191.114	193.224	2.0	-7	-4.6	4.3	.6	-2
Water and sewer and trash collection services ²	173.971	174.824	175.400	176.725	6.0	4.4	4.9	6.5	5.2	5.7
Household furnishings and operations	124.473	124.307	124.382	124.493	-3.5	-1.9	-2.1	.1	-2.7	-1.0
Household operations ^{1 2}	150.180	150.648	151.189	151.358	2.3	.1	-1.2	3.2	1.2	1.0
Apparel	119.132	119.208	120.456	119.384	-2.6	2.8	-2.6	.8	.1	-9
Men's and boys' apparel	111.637	111.304	112.414	111.408	-2.2	5.3	-3.5	-.8	1.5	-2.2
Women's and girls' apparel	106.288	106.330	107.957	106.622	-5.6	2.1	-4.0	1.3	-1.8	-1.4
Infants' and toddlers' apparel	113.107	113.587	111.436	109.634	.8	4.1	-7.1	-11.7	2.4	-9.5
Footwear	127.336	127.149	128.166	127.691	-2.9	.7	-1.7	1.1	-1.1	-3
Transportation	197.102	200.956	203.622	207.433	-5.5	4.4	9.6	22.7	-6	16.0
Private transportation	192.348	196.183	198.730	202.446	-6.8	5.4	9.5	22.7	-9	15.9
New and used motor vehicles ²	97.253	97.173	97.000	97.490	.4	2.9	-1.7	1.0	1.6	-.4
New vehicles	138.095	137.923	137.752	139.065	.3	1.3	-.6	2.8	.8	1.1
Used cars and trucks	144.162	144.058	143.664	143.847	3.8	8.6	-3.4	-.9	6.2	-2.2
Motor fuel	250.892	267.320	277.665	291.093	-24.3	11.3	33.2	81.2	-8.2	55.4
Gasoline (all types)	250.744	267.635	277.129	290.027	-24.9	11.9	34.3	79.0	-8.3	55.0
Motor vehicle parts and equipment ¹	138.768	139.223	140.487	140.912	1.4	4.5	3.3	6.3	3.0	4.8
Motor vehicle maintenance and repair ¹	249.872	250.134	250.726	250.851	2.2	1.8	2.4	1.6	2.0	2.0
Public transportation	256.463	260.181	264.616	269.625	14.2	-7.1	11.5	22.2	3.0	16.7
Medical care	392.587	393.537	393.843	395.615	2.8	1.9	3.7	3.1	2.4	3.4
Medical care commodities ¹	316.794	317.199	318.929	321.186	2.7	-1	2.5	5.7	1.3	4.0
Medical care services	416.152	417.315	417.004	418.529	2.8	2.6	4.2	2.3	2.7	3.2
Professional services	331.641	332.107	331.974	333.483	1.4	3.8	2.8	2.2	2.6	2.5

See footnotes at end of table.

Table 2. Consumer Price Index for All Urban Consumers (CPI-U): Seasonally adjusted U.S. city average, by expenditure category and commodity and service group-Continued

(1982-84=100, unless otherwise noted)

CPI-U Expenditure category	Seasonally adjusted indexes				Seasonally adjusted annual rate percent change for					
					3 months ended—			6 months ended—		
	Nov. 2010	Dec. 2010	Jan. 2011	Feb. 2011	May 2010	Aug. 2010	Nov. 2010	Feb. 2011	Aug. 2010	Feb. 2011
Hospital and related services	621.219	625.757	624.854	628.137	7.1	3.5	8.2	4.5	5.3	6.4
Recreation ²	112.988	112.727	112.939	113.242	.4	-.5	-1.4	.9	.0	-.3
Video and audio ²	98.576	97.871	97.904	98.395	-1.6	-2.4	-.4	-.7	-2.0	-.6
Education and communication ²	130.500	130.328	130.548	130.759	2.0	1.4	.7	.8	1.7	.7
Education ²	201.763	202.558	203.738	204.456	4.8	3.3	2.9	5.4	4.0	4.2
Educational books and supplies	510.408	514.054	520.236	519.288	3.1	-1.9	6.2	7.1	.6	6.7
Tuition, other school fees, and childcare	580.254	582.411	585.549	587.834	4.9	3.6	2.7	5.3	4.3	4.0
Communication ²	84.465	83.943	83.760	83.746	-.4	-.2	-1.3	-3.4	-.3	-2.3
Information and information processing ²	81.292	80.761	80.399	80.383	-.5	-.2	-1.4	-4.4	-.3	-2.9
Telephone services ^{1 2}	102.329	101.739	101.412	101.316	-.3	-.6	-.8	-3.9	.5	-2.4
Information technology, hardware and services ⁵	9.328	9.246	9.171	9.189	-2.6	-2.6	-3.0	-5.8	-2.6	-4.4
Personal computers and peripheral equipment ⁶	75.503	73.943	72.662	72.289	-5.9	-.2	-4.1	-16.0	-3.1	-10.2
Other goods and services	383.748	384.680	385.031	385.532	1.1	5.5	-.6	1.9	3.3	.6
Tobacco and smoking products ¹	820.854	827.680	828.079	829.535	6.5	12.8	-.9	4.3	9.6	1.7
Personal care	207.246	207.326	207.547	207.783	-.6	3.1	-.5	1.0	1.2	.3
Personal care products ¹	160.401	160.656	160.920	161.325	-4.1	2.5	-2.3	2.3	-.9	.0
Personal care services ¹	229.623	230.159	229.933	230.177	3.4	.6	-1.3	1.0	2.0	-.2
Miscellaneous personal services	357.200	357.711	358.181	358.894	1.9	3.0	2.0	1.9	2.5	2.0
Commodity and service group										
Commodities	175.807	177.291	178.833	180.549	-3.3	1.9	3.8	11.2	-.7	7.4
Food and beverages	221.237	221.524	222.602	223.779	1.6	.4	2.3	4.7	1.0	3.5
Commodities less food and beverages	151.586	153.502	155.178	157.054	-6.0	2.8	4.6	15.2	-1.7	9.8
Nondurables less food and beverages	192.897	197.199	200.839	204.142	-10.9	4.6	9.7	25.4	-3.5	17.3
Apparel	119.132	119.208	120.456	119.384	-2.6	2.8	-2.6	.8	.1	-.9
Nondurables less food, beverages, and apparel	243.168	250.350	255.448	260.797	-12.2	5.4	13.6	32.3	-3.8	22.6
Durables	110.661	110.632	110.557	111.024	-.7	1.5	-4.0	1.3	.4	-1.4
Services	262.363	262.782	263.034	263.745	1.5	1.0	1.1	2.1	1.2	1.6
Rent of shelter ⁴	259.975	260.617	260.471	260.509	-.3	.1	2.4	.8	-.1	1.6
Tenants' and household insurance ^{1 2}	127.501	126.194	126.192	126.529	1.9	4.6	3.3	-3.0	3.3	.1
Energy services ³	191.182	192.310	191.114	193.224	2.0	-.7	-4.6	4.3	.6	-.2
Water and sewer and trash collection services ²	173.971	174.824	175.400	176.725	6.0	4.4	4.9	6.5	5.2	5.7
Household operations ^{1 2}	150.180	150.648	151.189	151.358	2.3	.1	-1.2	3.2	1.2	1.0
Transportation services	262.751	263.379	264.832	266.061	4.5	.1	4.4	5.1	2.3	4.8
Medical care services	416.152	417.315	417.004	418.529	2.8	2.6	4.2	2.3	2.7	3.2
Other services	311.135	311.102	311.610	312.190	2.6	1.9	.4	1.4	2.3	.9
Special indexes										
All items less food	219.001	220.049	220.885	222.091	-.8	1.6	2.1	5.8	.4	3.9
All items less shelter	210.063	211.276	212.429	213.995	-.7	1.7	2.8	7.7	.5	5.2
All items less medical care	210.750	211.688	212.578	213.755	-.7	1.3	2.1	5.8	.3	3.9
Commodities less food	154.188	156.060	157.709	159.553	-5.8	2.8	4.5	14.7	-1.6	9.5
Nondurables less food	194.920	199.211	202.374	205.455	-10.1	4.0	9.8	23.4	-3.3	16.4
Nondurables less food and apparel	240.332	246.849	251.499	256.414	-11.2	5.0	12.6	29.6	-3.4	20.8
Nondurables	207.592	210.033	212.320	214.660	-4.4	1.8	6.6	14.3	-1.4	10.4
Services less rent of shelter ⁴	286.073	286.792	287.061	288.270	3.0	1.1	1.5	3.1	2.0	2.3
Services less medical care services	250.769	251.378	251.378	251.810	1.2	.4	1.9	1.7	.8	1.8
Energy	216.506	225.151	229.915	237.620	-13.3	5.0	15.8	45.1	-4.6	29.6
All items less energy	221.259	221.434	221.922	222.483	.9	1.0	.9	2.2	1.0	1.6
All items less food and energy	222.059	222.210	222.587	223.029	.8	1.2	.7	1.8	1.0	1.2
Commodities less food and energy commodities	143.373	143.228	143.571	143.793	-1.1	1.4	-1.5	1.2	.2	-.2
Energy commodities	254.408	270.712	281.416	294.905	-23.4	9.7	33.6	80.6	-8.3	55.3
Services less energy services	269.632	269.986	270.374	270.955	1.5	1.1	1.5	2.0	1.3	1.7

¹ Not seasonally adjusted.

² Indexes on a December 1997=100 base.

³ This index series was calculated using a Laspeyres estimator. All other item stratum index series were calculated using a geometric means estimator.

⁴ Indexes on a December 1982=100 base.

⁵ Indexes on a December 1988=100 base.

⁶ Indexes on a December 2007=100 base.

NOTE: Index applies to a month as a whole, not to any specific date.

Table 3. Consumer Price Index for All Urban Consumers (CPI-U): Selected areas, all items index

(1982-84=100, unless otherwise noted)

CPI-U	Pricing schedule 1	All items									
		Indexes				Percent change to Feb.2011 from—			Percent change to Jan.2011 from—		
		Nov. 2010	Dec. 2010	Jan. 2011	Feb. 2011	Feb. 2010	Dec. 2010	Jan. 2011	Jan. 2010	Nov. 2010	Dec. 2010
U.S. city average	M	218.803	219.179	220.223	221.309	2.1	1.0	0.5	1.6	0.6	0.5
Region and area size²											
Northeast urban	M	235.094	235.141	235.969	237.110	2.0	.8	.5	1.6	.4	.4
Size A - More than 1,500,000	M	236.806	236.828	237.564	238.798	2.0	.8	.5	1.5	.3	.3
Size B/C - 50,000 to 1,500,000 ³	M	140.282	140.351	141.001	141.547	2.2	.9	.4	1.9	.5	.5
Midwest urban	M	208.816	209.270	210.388	211.090	2.2	.9	.3	1.9	.8	.5
Size A - More than 1,500,000	M	209.344	209.936	210.928	211.503	2.0	.7	.3	1.7	.8	.5
Size B/C - 50,000 to 1,500,000 ³	M	134.058	134.267	135.061	135.665	2.4	1.0	.4	2.0	.7	.6
Size D - Nonmetropolitan (less than 50,000)	M	206.014	206.136	207.551	208.156	2.4	1.0	.3	2.0	.7	.7
South urban	M	211.996	212.488	213.589	214.735	2.2	1.1	.5	1.7	.8	.5
Size A - More than 1,500,000	M	213.424	213.850	215.127	216.145	2.2	1.1	.5	1.6	.8	.6
Size B/C - 50,000 to 1,500,000 ³	M	134.892	135.240	135.925	136.625	2.3	1.0	.5	1.8	.8	.5
Size D - Nonmetropolitan (less than 50,000)	M	215.736	216.189	216.750	218.772	2.2	1.2	.9	1.3	.5	.3
West urban	M	221.671	222.081	223.149	224.431	1.9	1.1	.6	1.4	.7	.5
Size A - More than 1,500,000	M	225.847	226.112	227.281	228.444	2.0	1.0	.5	1.5	.6	.5
Size B/C - 50,000 to 1,500,000 ³	M	133.930	134.328	134.917	135.826	1.7	1.1	.7	1.2	.7	.4
Size classes											
A ⁴	M	199.844	200.123	201.059	201.974	2.0	.9	.5	1.6	.6	.5
B/C ³	M	135.289	135.579	136.260	136.960	2.2	1.0	.5	1.7	.7	.5
D	M	212.124	212.541	213.417	214.862	2.3	1.1	.7	1.6	.6	.4
Selected local areas⁵											
Chicago-Gary-Kenosha, IL-IN-WI	M	213.066	213.778	215.155	216.192	1.8	1.1	.5	1.4	1.0	.6
Los Angeles-Riverside-Orange County, CA ...	M	225.941	226.639	228.652	229.729	2.3	1.4	.5	1.8	1.2	.9
New York-Northern N.J.-Long Island, NY-NJ-CT-PA	M	241.960	241.874	242.639	243.832	2.1	.8	.5	1.5	.3	.3
Boston-Brockton-Nashua, MA-NH-ME-CT	1	238.103	-	239.814	-	-	-	-	1.1	.7	-
Cleveland-Akron, OH	1	206.168	-	207.587	-	-	-	-	2.2	.7	-
Dallas-Fort Worth, TX	1	201.168	-	203.199	-	-	-	-	.5	1.0	-
Washington-Baltimore, DC-MD-VA-WV ⁶	1	142.915	-	144.327	-	-	-	-	2.3	1.0	-
Atlanta, GA	2	-	202.519	-	205.744	1.5	1.6	-	-	-	-
Detroit-Ann Arbor-Flint, MI	2	-	206.384	-	206.816	1.7	.2	-	-	-	-
Houston-Galveston-Brazoria, TX	2	-	194.479	-	197.224	2.5	1.4	-	-	-	-
Miami-Fort Lauderdale, FL	2	-	224.907	-	227.451	2.2	1.1	-	-	-	-
Philadelphia-Wilmington-Atlantic City, PA-NJ-DE-MD	2	-	228.017	-	230.878	1.9	1.3	-	-	-	-
San Francisco-Oakland-San Jose, CA	2	-	227.658	-	229.981	1.7	1.0	-	-	-	-
Seattle-Tacoma-Bremerton, WA	2	-	226.862	-	229.482	1.5	1.2	-	-	-	-

¹ Foods, fuels, and several other items priced every month in all areas; most other goods and services priced as indicated:

M - Every month.

1 - January, March, May, July, September, and November.

2 - February, April, June, August, October, and December.

² Regions defined as the four Census regions. See technical notes.

³ Indexes on a December 1996=100 base.

⁴ Indexes on a December 1986=100 base.

⁵ In addition, the following metropolitan areas are published semiannually and appear in Tables 34 and 39 of the January and July issues of the CPI Detailed Report: Anchorage, AK; Cincinnati-Hamilton, OH-KY-IN; Denver-Boulder-Greeley, CO; Honolulu, HI; Kansas City, MO-KS; Milwaukee-Racine, WI; Minneapolis-St. Paul, MN-WI; Phoenix-Mesa, AZ; Pittsburgh, PA; Portland-Salem, OR-WA; St. Louis, MO-IL; San Diego, CA;

Tampa-St. Petersburg-Clearwater, FL.

⁶ Indexes on a November 1996=100 base.

- Data not available.

NOTE: Local area indexes are byproducts of the national CPI program. Each local index has a smaller sample size than the national index and is, therefore, subject to substantially more sampling and other measurement error. As a result, local area indexes show greater volatility than the national index, although their long-term trends are similar. Therefore, the Bureau of Labor Statistics strongly urges users to consider adopting the national average CPI for use in their escalator clauses.

NOTE: Index applies to a month as a whole, not to any specific date.

Table 4. Consumer Price Index for Urban Wage Earners and Clerical Workers (CPI-W): U.S. city average, by expenditure category and commodity and service group

(1982-84=100, unless otherwise noted)

CPI-W Expenditure category	Relative importance, December 2010	Unadjusted indexes		Unadjusted percent change to Feb. 2011 from—		Seasonally adjusted percent change from—		
		Jan. 2011	Feb. 2011	Feb. 2010	Jan. 2011	Nov. to Dec.	Dec. to Jan.	Jan. to Feb.
All items	100.000	216.400	217.535	2.3	0.5	0.5	0.5	0.6
All items (1967=100)	-	644.591	647.969	-	-	-	-	-
Food and beverages	16.401	222.385	223.273	2.3	.4	.1	.5	.5
Food	15.315	222.039	222.942	2.3	.4	.1	.5	.6
Food at home	8.906	218.804	220.110	2.9	.6	.1	.8	.9
Cereals and bakery products	1.236	253.991	254.963	1.3	.4	.4	.7	.1
Meats, poultry, fish, and eggs	2.227	214.127	216.062	6.9	.9	-.3	.9	1.2
Dairy and related products ¹917	201.170	202.335	2.4	.6	.4	.1	.6
Fruits and vegetables	1.219	282.396	284.132	4.5	.6	1.9	1.2	2.4
Nonalcoholic beverages and beverage materials	1.091	163.586	163.262	.5	-.2	-1.2	1.5	.1
Other food at home	2.217	190.656	192.187	.7	.8	.0	.3	.6
Sugar and sweets ¹324	201.824	203.373	1.2	.8	1.3	-.2	.8
Fats and oils258	208.026	210.741	4.7	1.3	-.4	2.1	1.0
Other foods	1.635	203.614	205.098	.0	.7	-.2	.1	.5
Other miscellaneous foods ^{1 2}463	121.161	121.605	.1	.4	1.3	-.9	.4
Food away from home ¹	6.409	228.279	228.596	1.5	.1	.1	.2	.1
Other food away from home ^{1 2}326	161.635	162.728	2.5	.7	.1	.0	.7
Alcoholic beverages	1.086	225.994	226.675	1.4	.3	.0	.1	.2
Housing	39.228	213.442	213.931	.7	.2	.2	.1	.3
Shelter	29.811	243.569	243.961	.8	.2	.1	.1	.2
Rent of primary residence ³	8.396	249.848	250.128	1.1	.1	.2	.2	.1
Lodging away from home ²436	130.091	133.181	2.0	2.4	.9	-1.3	.2
Owners' equivalent rent of residences ^{3 4}	20.672	233.565	233.872	.7	.1	.1	.1	.2
Owners' equivalent rent of primary residence ^{3 4}	19.942	233.564	233.870	.7	.1	.1	.1	.2
Tenants' and household insurance ^{1 2}306	127.690	128.035	2.1	.3	-.7	.0	.3
Fuels and utilities	5.633	212.409	213.775	2.2	.6	.7	.0	1.0
Household energy	4.476	185.463	186.578	1.4	.6	.8	.0	1.1
Fuel oil and other fuels ¹301	315.348	326.950	16.3	3.7	4.0	5.3	3.7
Energy services ³	4.175	187.874	188.567	.4	.4	.6	-.4	.9
Water and sewer and trash collection services ²	1.157	176.175	177.594	5.2	.8	.5	.3	.7
Household furnishings and operations	3.784	120.345	120.518	-2.1	.1	-.1	.1	.0
Household operations ^{1 2}364	153.583	153.703	1.4	.1	.2	.3	.1
Apparel	3.668	115.649	117.507	-.9	1.6	.0	1.0	-.7
Men's and boys' apparel921	110.386	111.528	.0	1.0	-.2	1.3	-.8
Women's and girls' apparel	1.502	101.701	104.611	-1.8	2.9	-.2	1.5	-1.0
Infants' and toddlers' apparel280	113.268	112.814	-4.2	-.4	.7	-2.1	-1.7
Footwear750	125.474	126.363	-1.2	.7	-.1	.9	-.2
Transportation	19.418	200.635	202.910	7.7	1.1	2.2	1.4	2.0
Private transportation	18.631	197.275	199.417	7.6	1.1	2.3	1.4	2.0
New and used motor vehicles ²	6.914	96.227	96.734	1.0	.5	-.1	-.2	.5
New vehicles	3.320	139.871	141.114	.9	.9	-.1	-.2	1.0
Used cars and trucks	3.003	143.479	143.868	2.0	.3	-.1	-.3	.1
Motor fuel	6.470	266.820	273.013	19.4	2.3	6.7	3.9	4.8
Gasoline (all types)	6.193	266.224	272.117	19.2	2.2	7.2	3.5	4.7
Motor vehicle parts and equipment ¹479	140.289	140.763	3.7	.3	.4	.8	.3
Motor vehicle maintenance and repair ¹	1.184	253.310	253.524	2.0	.1	.1	.2	.1
Public transportation787	256.604	262.444	9.2	2.3	1.5	1.5	2.0
Medical care	5.355	395.536	398.908	3.1	.9	.3	.1	.5
Medical care commodities ¹	1.318	310.488	312.764	2.8	.7	.2	.5	.7
Medical care services	4.038	420.540	424.289	3.2	.9	.3	-.1	.4
Professional services	2.220	335.368	337.901	2.7	.8	.1	.1	.4

See footnotes at end of table.

Table 4. Consumer Price Index for Urban Wage Earners and Clerical Workers (CPI-W): U.S. city average, by expenditure category and commodity and service group-Continued

(1982-84=100, unless otherwise noted)

CPI-W Expenditure category	Relative importance, December 2010	Unadjusted indexes		Unadjusted percent change to Feb. 2011 from—		Seasonally adjusted percent change from—		
		Jan. 2011	Feb. 2011	Feb. 2010	Jan. 2011	Nov. to Dec.	Dec. to Jan.	Jan. to Feb.
Hospital and related services	1.414	628.321	636.256	6.4	1.3	0.8	-0.1	0.6
Recreation ²	5.862	109.039	109.693	-.3	.6	-.3	.4	.4
Video and audio ²	1.959	97.925	98.897	-1.2	1.0	-.7	.1	.5
Education and communication ²	6.118	125.065	125.069	.6	.0	-.2	.0	.1
Education ²	2.380	201.353	201.500	4.1	.1	.4	.6	.3
Educational books and supplies199	526.152	526.197	4.1	.0	.6	1.6	.1
Tuition, other school fees, and childcare	2.181	565.760	566.205	4.1	.1	.4	.5	.3
Communication ²	3.738	86.209	86.174	-1.5	.0	-.7	-.4	.0
Information and information processing ²	3.605	83.881	83.844	-1.7	.0	-.7	-.5	-.1
Telephone services ^{1 2}	2.823	100.882	100.768	-1.2	-.1	-.6	-.4	-.1
Information technology, hardware and services ⁵782	9.713	9.734	-3.4	.2	-.9	-.8	.2
Personal computers and peripheral equipment ⁶208	72.433	72.138	-7.4	-.4	-2.2	-1.8	-.5
Other goods and services	3.950	414.263	415.088	2.6	.2	.4	.1	.2
Tobacco and smoking products ¹	1.450	832.904	834.343	5.5	.2	.9	.0	.2
Personal care	2.500	205.264	205.705	.9	.2	.2	.1	.2
Personal care products ¹717	161.462	161.974	-.1	.3	.3	.2	.3
Personal care services ¹572	230.140	230.418	1.0	.1	.2	-.1	.1
Miscellaneous personal services	1.027	359.587	360.528	2.3	.3	.3	.2	.2
Commodity and service group								
Commodities	43.898	180.958	182.442	3.6	.8	1.0	.9	1.1
Food and beverages	16.401	222.385	223.273	2.3	.4	.1	.5	.5
Commodities less food and beverages	27.497	158.473	160.171	4.4	1.1	1.5	1.2	1.4
Nondurables less food and beverages	17.244	206.142	209.079	7.2	1.4	2.7	1.8	1.8
Apparel	3.668	115.649	117.507	-.9	1.6	.0	1.0	-.7
Nondurables less food, beverages, and apparel	13.576	266.785	270.459	9.5	1.4	3.3	2.2	2.0
Durables	10.253	111.973	112.498	-.1	.5	.0	.0	.5
Services	56.102	257.982	258.732	1.4	.3	.1	.1	.3
Rent of shelter ⁴	29.504	234.715	235.090	.8	.2	.2	.1	.1
Tenants' and household insurance ^{1 2}306	127.690	128.035	2.1	.3	-.7	.0	.3
Energy services ³	4.175	187.874	188.567	.4	.4	.6	-.4	.9
Water and sewer and trash collection services ²	1.157	176.175	177.594	5.2	.8	.5	.3	.7
Household operations ^{1 2}364	153.583	153.703	1.4	.1	.2	.3	.1
Transportation services	5.994	264.313	265.521	3.4	.5	.1	.4	.5
Medical care services	4.038	420.540	424.289	3.2	.9	.3	-.1	.4
Other services	10.563	296.924	297.671	1.2	.3	-.1	.1	.2
Special indexes								
All items less food	84.685	215.215	216.389	2.3	.5	.6	.4	.6
All items less shelter	70.189	208.828	210.242	3.0	.7	.7	.6	.8
All items less medical care	94.645	209.141	210.198	2.3	.5	.5	.5	.6
Commodities less food	28.583	160.795	162.470	4.3	1.0	1.5	1.2	1.3
Nondurables less food	18.329	207.458	210.278	6.8	1.4	2.5	1.7	1.7
Nondurables less food and apparel	14.662	262.134	265.539	8.9	1.3	3.1	2.0	1.9
Nondurables	33.644	214.950	216.941	4.8	.9	1.4	1.2	1.2
Services less rent of shelter ⁴	26.598	252.563	253.664	2.0	.4	.2	.1	.4
Services less medical care services	52.065	246.643	247.244	1.2	.2	.2	.1	.2
Energy	10.946	224.500	228.160	11.6	1.6	4.2	2.3	3.4
All items less energy	89.054	216.389	217.222	1.3	.4	.1	.2	.3
All items less food and energy	73.739	215.627	216.448	1.1	.4	.1	.2	.2
Commodities less food and energy commodities	21.812	145.024	145.909	.1	.6	.0	.2	.2
Energy commodities	6.771	270.105	276.539	19.3	2.4	6.6	4.0	4.8
Services less energy services	51.927	265.639	266.394	1.5	.3	.1	.1	.2
Purchasing power of the consumer dollar (1982-84=\$1.00)	-	\$.462	\$.460	-	-	-	-	-
Purchasing power of the consumer dollar (1967=\$1.00)	-	\$.155	\$.154	-	-	-	-	-

¹ Not seasonally adjusted.

² Indexes on a December 1997=100 base.

³ This index series was calculated using a Laspeyres estimator. All other item stratum index series were calculated using a geometric means estimator.

⁴ Indexes on a December 1984=100 base

⁵ Indexes on a December 1988=100 base.

⁶ Indexes on a December 2007=100 base.

- Data not available.

NOTE: Index applies to a month as a whole, not to any specific date.

Table 5. Consumer Price Index for Urban Wage Earners and Clerical Workers (CPI-W): Seasonally adjusted U.S. city average, by expenditure category and commodity and service group

(1982-84=100, unless otherwise noted)

CPI-W	Seasonally adjusted indexes				Seasonally adjusted annual rate percent change for					
					3 months ended—			6 months ended—		
	Nov. 2010	Dec. 2010	Jan. 2011	Feb. 2011	May 2010	Aug. 2010	Nov. 2010	Feb. 2011	Aug. 2010	Feb. 2011
Expenditure category										
All items	215.236	216.367	217.344	218.702	-0.9	1.6	2.5	6.6	0.4	4.5
Food and beverages	220.515	220.782	221.853	223.029	1.5	.6	2.4	4.6	1.1	3.5
Food	220.065	220.351	221.486	222.716	1.6	.5	2.5	4.9	1.0	3.7
Food at home	215.914	216.235	217.871	219.728	2.1	-.3	2.8	7.3	.9	5.0
Cereals and bakery products	251.623	252.705	254.540	254.751	-.7	-2.1	2.9	5.1	-1.4	4.0
Meats, poultry, fish, and eggs	212.375	211.826	213.732	216.300	8.1	4.3	7.7	7.6	6.2	7.6
Dairy and related products ¹	200.084	200.958	201.170	202.335	-2.2	2.4	5.0	4.6	.1	4.8
Fruits and vegetables	267.492	272.546	275.896	282.396	5.5	-9.1	.0	24.2	-2.1	11.4
Nonalcoholic beverages and beverage materials	161.709	159.802	162.150	162.352	-1.3	.2	1.4	1.6	-.6	1.5
Other food at home	190.223	190.252	190.804	191.912	-.2	.1	-.6	3.6	.0	1.5
Sugar and sweets ¹	199.542	202.206	201.824	203.373	.2	-4.1	1.4	7.9	-2.0	4.6
Fats and oils	203.735	202.870	207.171	209.238	.6	1.9	5.2	11.2	1.3	8.2
Other foods	204.121	203.773	203.965	204.938	-.4	.7	-1.9	1.6	.1	-.2
Other miscellaneous foods ^{1 2}	120.723	122.267	121.161	121.605	-2.0	3.1	-3.5	3.0	.5	-.3
Food away from home ¹	227.634	227.871	228.279	228.596	.9	1.5	2.1	1.7	1.2	1.9
Other food away from home ^{1 2}	161.428	161.657	161.635	162.728	.2	2.5	4.0	3.3	1.3	3.6
Alcoholic beverages	225.656	225.647	225.786	226.181	.9	2.5	1.1	.9	1.7	1.0
Housing	213.124	213.535	213.712	214.274	.0	.1	.6	2.2	.1	1.4
Shelter	242.968	243.290	243.522	243.891	.1	.5	1.1	1.5	.3	1.3
Rent of primary residence ³	248.584	249.110	249.556	249.881	.2	.3	1.7	2.1	.3	1.9
Lodging away from home ²	134.716	135.916	134.166	134.483	13.2	2.2	-5.8	-.7	7.5	-3.3
Owners' equivalent rent of residences ^{3 4}	233.011	233.235	233.453	233.818	-.3	.5	1.0	1.4	.1	1.2
Owners' equivalent rent of primary residence ^{3 4}	233.012	233.235	233.452	233.819	-.3	.5	1.0	1.4	.1	1.2
Tenants' and household insurance ^{1 2}	128.556	127.674	127.690	128.035	2.2	4.8	3.3	-1.6	3.5	.8
Fuels and utilities	212.762	214.276	214.330	216.540	2.8	-.1	-.9	7.3	1.3	3.1
Household energy	186.318	187.766	187.675	189.762	2.0	-1.1	-2.2	7.6	.4	2.6
Fuel oil and other fuels ¹	287.994	299.558	315.348	326.950	-9.0	-13.4	39.7	66.1	-11.2	52.3
Energy services ³	190.037	191.094	190.284	192.035	2.8	-.3	-4.5	4.3	1.2	-.2
Water and sewer and trash collection services ²	174.458	175.249	175.803	177.057	6.0	4.0	4.8	6.1	5.0	5.5
Household furnishings and operations	120.526	120.388	120.479	120.458	-4.0	-2.4	-1.7	-.2	-3.2	-.9
Household operations ^{1 2}	152.778	153.116	153.583	153.703	4.4	1.0	-2.0	2.4	2.7	.2
Apparel	118.143	118.126	119.268	118.404	-3.3	.8	-1.9	.9	-1.3	-.5
Men's and boys' apparel	111.552	111.303	112.711	111.786	-1.9	4.0	-2.9	.8	1.0	-1.1
Women's and girls' apparel	105.650	105.468	107.067	106.045	-6.5	-.7	-1.2	1.5	-3.6	.2
Infants' and toddlers' apparel	116.085	116.916	114.477	112.572	.2	.7	-5.7	-11.6	.5	-8.7
Footwear	126.414	126.296	127.404	127.194	-3.4	.0	-3.6	2.5	-1.7	-.6
Transportation	196.502	200.880	203.697	207.843	-6.6	5.5	10.1	25.2	-.7	17.4
Private transportation	193.154	197.516	200.277	204.353	-7.4	6.0	10.2	25.3	-.9	17.5
New and used motor vehicles ²	96.488	96.431	96.217	96.700	1.1	3.9	-2.0	.9	2.5	-.5
New vehicles	139.042	138.950	138.691	140.067	.2	1.2	-.9	3.0	.7	1.0
Used cars and trucks	145.103	145.000	144.598	144.792	3.7	8.6	-3.2	-.9	6.2	-2.0
Motor fuel	251.513	268.361	278.809	292.327	-24.3	11.1	32.5	82.5	-8.3	55.5
Gasoline (all types)	250.858	268.977	278.404	291.392	-24.8	11.8	32.2	82.1	-8.3	55.1
Motor vehicle parts and equipment ¹	138.654	139.150	140.289	140.763	1.4	4.3	3.1	6.2	2.8	4.6
Motor vehicle maintenance and repair ¹	252.610	252.759	253.310	253.524	2.2	2.0	2.5	1.5	2.1	2.0
Public transportation	253.078	256.908	260.787	266.108	12.2	-5.4	9.4	22.2	3.1	15.6
Medical care	394.161	395.218	395.575	397.444	3.1	2.1	3.8	3.4	2.6	3.6
Medical care commodities ¹	308.332	308.823	310.488	312.764	2.8	.1	2.4	5.9	1.5	4.1
Medical care services	419.554	420.827	420.595	422.224	3.1	2.8	4.3	2.6	3.0	3.5
Professional services	334.979	335.472	335.757	337.029	1.7	3.8	2.8	2.5	2.8	2.6

See footnotes at end of table.

Table 5. Consumer Price Index for Urban Wage Earners and Clerical Workers (CPI-W): Seasonally adjusted U.S. city average, by expenditure category and commodity and service group-Continued

(1982-84=100, unless otherwise noted)

CPI-W	Seasonally adjusted indexes				Seasonally adjusted annual rate percent change for					
					3 months ended—			6 months ended—		
	Nov. 2010	Dec. 2010	Jan. 2011	Feb. 2011	May 2010	Aug. 2010	Nov. 2010	Feb. 2011	Aug. 2010	Feb. 2011
Expenditure category										
Hospital and related services	623.224	628.241	627.317	630.894	7.7	4.2	8.6	5.0	5.9	6.8
Recreation ²	109.234	108.943	109.345	109.742	-3	-8	-2.1	1.9	-6	-2
Video and audio ²	99.092	98.429	98.510	99.020	-2.0	-2.1	-4	-3	-2.1	-3
Education and communication ²	125.259	124.955	124.959	125.081	1.6	1.2	.1	-6	1.4	-2
Education ²	199.002	199.846	200.978	201.628	4.7	3.2	2.9	5.4	4.0	4.1
Educational books and supplies	513.501	516.326	524.385	524.817	3.0	-1.2	5.8	9.1	.9	7.4
Tuition, other school fees, and childcare	559.803	562.114	564.783	566.738	4.9	3.7	2.6	5.0	4.3	3.8
Communication ²	87.075	86.499	86.192	86.152	-2	-1	-1.6	-4.2	-1	-2.9
Information and information processing ²	84.882	84.299	83.864	83.822	-2	-1	-1.6	-4.9	-1	-3.3
Telephone services ^{1 2}	101.975	101.327	100.882	100.768	.2	.5	-1.0	-4.7	.4	-2.9
Information technology, hardware and services ⁵	9.868	9.782	9.704	9.722	-1.9	-2.2	-3.7	-5.8	-2.0	-4.7
Personal computers and peripheral equipment ⁶	75.142	73.494	72.178	71.808	-6.0	-8	-5.7	-16.6	-3.4	-11.3
Other goods and services	412.455	414.260	414.533	415.238	1.5	6.8	-7	2.7	4.1	1.0
Tobacco and smoking products ¹	825.644	832.741	832.904	834.343	6.4	12.8	-9	4.3	9.6	1.6
Personal care	204.886	205.285	205.476	205.822	-1.1	3.5	-5	1.8	1.2	.7
Personal care products ¹	160.801	161.217	161.462	161.974	-4.3	2.7	-1.4	2.9	-9	.7
Personal care services ¹	229.855	230.332	230.140	230.418	3.7	.6	-1.3	1.0	2.2	-2
Miscellaneous personal services	358.618	359.558	360.275	360.922	1.7	2.4	2.5	2.6	2.1	2.5
Commodity and service group										
Commodities	179.007	180.813	182.495	184.454	-3.7	2.3	4.3	12.7	-8	8.5
Food and beverages	220.515	220.782	221.853	223.029	1.5	.6	2.4	4.6	1.1	3.5
Commodities less food and beverages	156.541	158.952	160.848	163.087	-6.8	3.3	5.5	17.8	-1.9	11.5
Nondurables less food and beverages	202.225	207.594	211.319	215.122	-12.2	4.7	12.1	28.1	-4.1	19.8
Apparel	118.143	118.126	119.268	118.404	-3.3	.8	-1.9	.9	-1.3	-5
Nondurables less food, beverages, and apparel	258.599	267.257	273.060	278.583	-12.9	6.4	15.2	34.7	-3.7	24.6
Durables	111.936	111.888	111.840	112.365	.2	2.2	-4.3	1.5	1.2	-1.4
Services	257.663	258.034	258.262	258.975	1.4	1.0	1.1	2.1	1.2	1.6
Rent of shelter ⁴	234.338	234.729	234.950	235.112	-3	.3	1.8	1.3	.0	1.6
Tenants' and household insurance ^{1 2}	128.556	127.674	127.690	128.035	2.2	4.8	3.3	-1.6	3.5	.8
Energy services ³	190.037	191.094	190.284	192.035	2.8	-3	-4.5	4.3	1.2	-2
Water and sewer and trash collection services ²	174.458	175.249	175.803	177.057	6.0	4.0	4.8	6.1	5.0	5.5
Household operations ^{1 2}	152.778	153.116	153.583	153.703	4.4	1.0	-2.0	2.4	2.7	.2
Transportation services	263.053	263.406	264.463	265.678	4.2	1.4	3.9	4.1	2.8	4.0
Medical care services	419.554	420.827	420.595	422.224	3.1	2.8	4.3	2.6	3.0	3.5
Other services	297.133	296.889	297.247	297.790	2.1	1.7	.1	.9	1.9	.5
Special indexes										
All items less food	214.194	215.473	216.422	217.800	-1.3	1.8	2.5	6.9	.2	4.7
All items less shelter	207.446	208.883	210.141	211.871	-1.2	2.1	3.0	8.8	.4	5.9
All items less medical care	207.992	209.116	210.104	211.434	-1.1	1.6	2.4	6.8	.2	4.6
Commodities less food	158.899	161.252	163.108	165.304	-6.5	3.3	5.3	17.1	-1.7	11.1
Nondurables less food	203.719	208.830	212.360	215.973	-11.4	4.5	11.4	26.3	-3.8	18.6
Nondurables less food and apparel	254.639	262.540	267.850	272.891	-11.9	6.0	14.1	31.9	-3.3	22.7
Nondurables	211.911	214.836	217.332	219.926	-5.1	2.0	7.2	16.0	-1.6	11.5
Services less rent of shelter ⁴	252.590	253.116	253.273	254.399	2.9	1.2	1.2	2.9	2.0	2.0
Services less medical care services	246.514	246.935	247.082	247.660	1.2	.6	1.4	1.9	.9	1.6
Energy	217.210	226.396	231.611	239.431	-13.8	5.6	16.4	47.6	-4.6	31.1
All items less energy	215.961	216.122	216.590	217.170	.8	1.1	.9	2.3	1.0	1.6
All items less food and energy	215.513	215.648	215.982	216.431	.6	1.3	.6	1.7	1.0	1.2
Commodities less food and energy commodities	145.547	145.475	145.784	146.034	-9	1.7	-1.6	1.3	.4	-1
Energy commodities	254.251	270.984	281.694	295.209	-23.6	9.9	32.8	81.7	-8.4	55.4
Services less energy services	265.038	265.330	265.675	266.270	1.3	1.1	1.5	1.9	1.2	1.7

¹ Not seasonally adjusted.

² Indexes on a December 1997=100 base.

³ This index series was calculated using a Laspeyres estimator. All other item stratum index series were calculated using a geometric means estimator.

⁴ Indexes on a December 1984=100 base

⁵ Indexes on a December 1988=100 base.

⁶ Indexes on a December 2007=100 base.

NOTE: Index applies to a month as a whole, not to any specific date.

Table 6. Consumer Price Index for Urban Wage Earners and Clerical Workers (CPI-W): Selected areas, all items index

(1982-84=100, unless otherwise noted)

CPI-W	Pricing schedule 1	All items									
		Indexes				Percent change to Feb.2011 from—			Percent change to Jan.2011 from—		
		Nov. 2010	Dec. 2010	Jan. 2011	Feb. 2011	Feb. 2010	Dec. 2010	Jan. 2011	Jan. 2010	Nov. 2010	Dec. 2010
U.S. city average	M	214.750	215.262	216.400	217.535	2.3	1.1	0.5	1.8	0.8	0.5
Region and area size²											
Northeast urban	M	232.962	233.082	233.914	235.109	2.3	.9	.5	1.8	.4	.4
Size A - More than 1,500,000	M	233.031	233.092	233.851	235.230	2.2	.9	.6	1.7	.4	.3
Size B/C - 50,000 to 1,500,000 ³	M	141.452	141.598	142.196	142.691	2.4	.8	.3	2.0	.5	.4
Midwest urban	M	204.468	205.024	206.258	206.981	2.4	1.0	.4	2.0	.9	.6
Size A - More than 1,500,000	M	204.064	204.731	205.878	206.516	2.4	.9	.3	1.9	.9	.6
Size B/C - 50,000 to 1,500,000 ³	M	134.112	134.454	135.277	135.841	2.5	1.0	.4	2.1	.9	.6
Size D - Nonmetropolitan (less than 50,000)	M	203.937	204.132	205.648	206.306	2.6	1.1	.3	2.1	.8	.7
South urban	M	209.352	209.994	211.216	212.416	2.5	1.2	.6	1.8	.9	.6
Size A - More than 1,500,000	M	211.222	211.712	213.058	214.129	2.3	1.1	.5	1.6	.9	.6
Size B/C - 50,000 to 1,500,000 ³	M	133.927	134.405	135.207	135.919	2.6	1.1	.5	2.0	1.0	.6
Size D - Nonmetropolitan (less than 50,000)	M	215.822	216.477	217.200	219.352	2.4	1.3	1.0	1.5	.6	.3
West urban	M	216.267	216.847	217.995	219.368	2.2	1.2	.6	1.6	.8	.5
Size A - More than 1,500,000	M	218.817	219.273	220.564	221.848	2.3	1.2	.6	1.7	.8	.6
Size B/C - 50,000 to 1,500,000 ³	M	133.777	134.306	134.900	135.845	1.9	1.1	.7	1.2	.8	.4
Size classes											
A ⁴	M	198.598	198.979	200.022	201.033	2.3	1.0	.5	1.7	.7	.5
B/C ³	M	134.969	135.379	136.112	136.808	2.4	1.1	.5	1.9	.8	.5
D	M	210.529	210.959	212.005	213.495	2.5	1.2	.7	1.8	.7	.5
Selected local areas⁵											
Chicago-Gary-Kenosha, IL-IN-WI	M	206.632	207.479	209.016	210.106	2.2	1.3	.5	1.7	1.2	.7
Los Angeles-Riverside-Orange County, CA ...	M	218.694	219.619	221.540	222.814	2.6	1.5	.6	2.0	1.3	.9
New York-Northern N.J.-Long Island, NY-NJ-CT-PA	M	237.606	237.575	238.396	239.750	2.4	.9	.6	1.8	.3	.3
Boston-Brockton-Nashua, MA-NH-ME-CT	1	238.891	-	240.540	-	-	-	-	1.1	.7	-
Cleveland-Akron, OH	1	197.530	-	199.568	-	-	-	-	2.6	1.0	-
Dallas-Fort Worth, TX	1	204.918	-	206.954	-	-	-	-	.7	1.0	-
Washington-Baltimore, DC-MD-VA-WV ⁶	1	142.938	-	144.556	-	-	-	-	2.4	1.1	-
Atlanta, GA	2	-	201.390	-	204.611	1.6	1.6	-	-	-	-
Detroit-Ann Arbor-Flint, MI	2	-	202.280	-	202.849	2.0	.3	-	-	-	-
Houston-Galveston-Brazoria, TX	2	-	192.863	-	195.677	2.8	1.5	-	-	-	-
Miami-Fort Lauderdale, FL	2	-	222.510	-	225.346	1.9	1.3	-	-	-	-
Philadelphia-Wilmington-Atlantic City, PA-NJ-DE-MD	2	-	228.072	-	231.306	2.1	1.4	-	-	-	-
San Francisco-Oakland-San Jose, CA	2	-	224.152	-	226.638	2.1	1.1	-	-	-	-
Seattle-Tacoma-Bremerton, WA	2	-	222.853	-	225.790	2.1	1.3	-	-	-	-

¹ Foods, fuels, and several other items priced every month in all areas; most other goods and services priced as indicated:

M - Every month.

1 - January, March, May, July, September, and November.

2 - February, April, June, August, October, and December.

² Regions defined as the four Census regions. See technical notes.

³ Indexes on a December 1996=100 base.

⁴ Indexes on a December 1986=100 base.

⁵ In addition, the following metropolitan areas are published semiannually and appear in Tables 34 and 39 of the January and July issues of the CPI Detailed Report: Anchorage, AK; Cincinnati-Hamilton, OH-KY-IN; Denver-Boulder-Greeley, CO; Honolulu, HI; Kansas City, MO-KS; Milwaukee-Racine, WI; Minneapolis-St. Paul, MN-WI; Phoenix-Mesa, AZ; Pittsburgh, PA; Portland-Salem, OR-WA; St. Louis, MO-IL; San Diego, CA;

Tampa-St. Petersburg-Clearwater, FL.

⁶ Indexes on a November 1996=100 base.

- Data not available.

NOTE: Local area indexes are byproducts of the national CPI program. Each local index has a smaller sample size than the national index and is, therefore, subject to substantially more sampling and other measurement error. As a result, local area indexes show greater volatility than the national index, although their long-term trends are similar. Therefore, the Bureau of Labor Statistics strongly urges users to consider adopting the national average CPI for use in their escalator clauses.

NOTE: Index applies to a month as a whole, not to any specific date.

Table 7. Chained Consumer Price Index for All Urban Consumers (C-CPI-U): U.S. city average, by expenditure category and commodity and service group

(December 1999=100, unless otherwise noted)

C-CPI-U	Relative importance, 2007-2008	Unadjusted indexes		Unadjusted percent change to Feb. 2011 from—	
		Jan. 2011	Feb. 2011	Feb. 2010	Jan. 2011
		Expenditure category			
All items	100.000	R126.811	127.429	2.0	0.5
Food and beverages	14.519	129.897	130.402	2.2	.4
Food	13.493	129.971	130.479	2.2	.4
Food at home	7.780	125.260	125.939	2.8	.5
Food away from home	5.712	136.473	136.726	1.6	.2
Alcoholic beverages	1.027	129.622	130.092	1.4	.4
Housing	42.074	128.403	128.726	.5	.3
Shelter	32.119	131.696	131.927	.7	.2
Fuels and utilities	5.231	157.336	158.474	1.8	.7
Household furnishings and operations	4.724	92.128	92.354	-2.3	.2
Apparel	3.772	87.458	88.737	-.7	1.5
Transportation	17.199	R135.346	R136.824	7.4	1.1
Private transportation	16.013	135.961	137.364	7.3	1.0
Public transportation	1.186	R127.460	R129.878	9.7	1.9
Medical care	6.294	152.417	153.610	2.7	.8
Medical care commodities	1.570	134.398	135.298	2.5	.7
Medical care services	4.723	159.032	160.337	2.7	.8
Recreation	6.625	102.062	102.486	-.9	.4
Education and communication	6.288	112.730	112.737	.8	.0
Education	2.804	188.254	188.346	4.0	.0
Communication	3.484	71.834	71.813	-1.7	.0
Other goods and services	3.229	140.089	140.344	1.6	.2
Commodity and service group					
Services	59.383	R136.170	R136.560	1.3	.3
Commodities	40.617	115.538	116.442	3.0	.8
Durables	10.376	80.179	80.543	-1.1	.5
Nondurables	30.241	133.958	135.157	4.4	.9
All items less food and energy	76.901	R120.281	R120.721	.9	.4
Energy	9.606	190.231	193.273	10.9	1.6

R Revised.

Indexes for 2011 are initial estimates. Indexes for 2010 are interim adjustments.

NOTE: Index applies to a month as a whole, not to any specific date.