

Transmission of material in this release is embargoed until 8:30 a.m. (EDT) Friday, October 8, 2010

USDL-10-1393

Technical information:

Household data: (202) 691-6378 • cpsinfo@bls.gov • www.bls.gov/cps
Establishment data: (202) 691-6555 • cesinfo@bls.gov • www.bls.gov/ces

Media contact: (202) 691-5902 • PressOffice@bls.gov

THE EMPLOYMENT SITUATION – SEPTEMBER 2010

Nonfarm payroll employment edged down (-95,000) in September, and the **unemployment rate** was unchanged at 9.6 percent, the U.S. Bureau of Labor Statistics reported today. Government employment declined (-159,000), reflecting both a drop in the number of temporary jobs for Census 2010 and job losses in local government. **Private-sector payroll employment** continued to trend up modestly (+64,000).

Chart 1. Unemployment rate, seasonally adjusted, September 2008 – September 2010

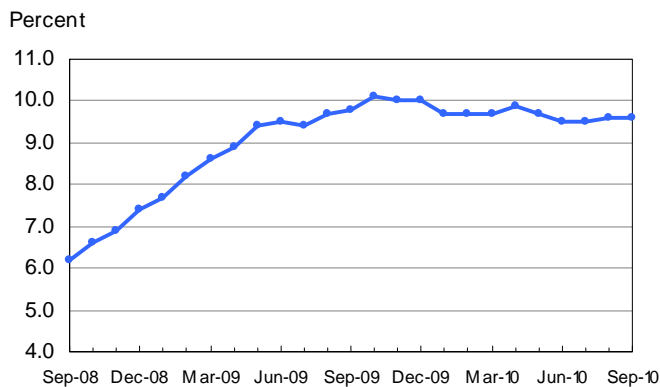
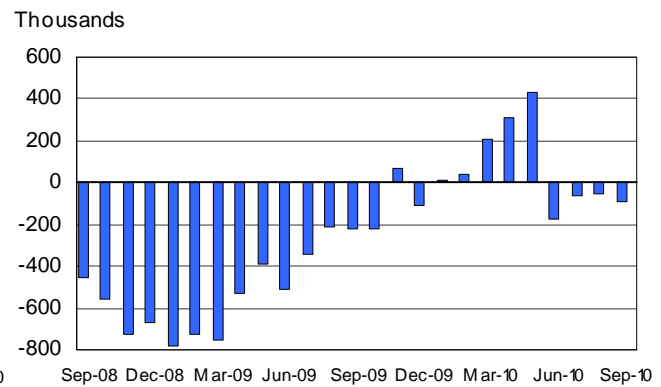


Chart 2. Nonfarm payroll employment over-the-month change, seasonally adjusted, September 2008 – September 2010



Household Survey Data

The number of **unemployed persons**, at 14.8 million, was essentially unchanged in September, and the **unemployment rate** held at 9.6 percent. (See table A-1.)

Among the **major worker groups**, the unemployment rate for adult men (9.8 percent), adult women (8.0 percent), teenagers (26.0 percent), whites (8.7 percent), blacks (16.1 percent), and Hispanics (12.4 percent) showed little or no change in September. The jobless rate for Asians was 6.4 percent, not seasonally adjusted. (See tables A-1, A-2, and A-3.)

The number of **long-term unemployed** (those jobless for 27 weeks and over), at 6.1 million, was little changed over the month but was down by 640,000 since a series high of 6.8 million in May. In September, 41.7 percent of unemployed persons had been jobless for 27 weeks or more. (See table A-12.)

In September, both the **civilian labor force participation rate**, at 64.7 percent, and the **employment-population ratio**, at 58.5 percent, were unchanged. (See table A-1.)

The number of persons employed **part time for economic reasons** (sometimes referred to as involuntary part-time workers) rose by 612,000 over the month to 9.5 million. Over the past 2 months, the number of such workers has increased by 943,000. These individuals were working part time because their hours had been cut back or because they were unable to find a full-time job. (See table A-8.)

About 2.5 million persons were **marginally attached to the labor force** in September, up from 2.2 million a year earlier. (The data are not seasonally adjusted.) These individuals were not in the labor force, wanted and were available for work, and had looked for a job sometime in the prior 12 months. They were not counted as unemployed because they had not searched for work in the 4 weeks preceding the survey. (See table A-16.)

Among the marginally attached, there were 1.2 million **discouraged workers** in September, an increase of 503,000 from a year earlier. (The data are not seasonally adjusted.) Discouraged workers are persons not currently looking for work because they believe no jobs are available for them. The remaining 1.3 million persons marginally attached to the labor force had not searched for work in the 4 weeks preceding the survey for reasons such as school attendance or family responsibilities. (See table A-16.)

Establishment Survey Data

Total **nonfarm payroll employment** edged down by 95,000 in September. Government employment fell by 159,000, reflecting both the departure of 77,000 temporary Census 2010 workers from federal government payrolls and a decline of 76,000 in local government employment. **Private-sector payroll employment** continued to trend up (+64,000) over the month. (See table B-1.)

Health care employment rose by 24,000 in September. The increase was concentrated in ambulatory health care services (+17,000). Health care employment has risen by an average of 21,000 per month this year.

Within **professional and business services**, employment services added 28,000 jobs in September. Temporary help services accounted for most of the gain.

Within **leisure and hospitality**, employment in food services and drinking places increased by 34,000 over the month and has risen by 104,000 thus far in 2010.

Mining employment continued to trend up (+6,000) over the month. Mining has added 77,000 jobs since a recent low in October 2009.

Employment in **manufacturing** changed little in September and, on net, has been essentially flat since May. The industry added 134,000 jobs during the first 5 months of the year.

Employment in **wholesale trade, retail trade, transportation and warehousing, information, and financial activities** showed little change in September.

Employment in **construction** edged down (-21,000) over the month, partly offsetting an employment gain in August. Both the August and September changes were concentrated among nonresidential specialty trade contractors. Construction employment has shown little net change since February.

Government employment fell by 159,000 in September. A decline in federal government employment was due to the loss of 77,000 temporary Census 2010 jobs. As of September, about 6,000 temporary decennial census workers remained on the federal government payroll, down from a peak of 564,000 in May. Employment in local government decreased by 76,000 in September with job losses in both education and noneducation.

In September, the **average workweek for all employees** was unchanged at 34.2 hours. The manufacturing workweek for all employees decreased by 0.1 hour to 40.1 hours, and factory overtime was unchanged at 3.0 hours. The average workweek for **production and nonsupervisory employees** on private nonfarm payrolls was unchanged at 33.5 hours. (See tables B-2 and B-7.)

Average hourly earnings of all employees on private nonfarm payrolls increased by 1 cent to \$22.67 in September. Over the past 12 months, average hourly earnings have increased by 1.7 percent. In September, average hourly earnings of private-sector **production and nonsupervisory employees** increased by 1 cent to \$19.10. (See tables B-3 and B-8.)

The change in total nonfarm payroll employment for July was revised from -54,000 to -66,000, and the change for August was revised from -54,000 to -57,000.

The Employment Situation for October is scheduled to be released on Friday, November 5, 2010, at 8:30 a.m. (EDT).

Preliminary Estimates of Benchmark Revisions to the Establishment Survey

In accordance with usual practice, the Bureau of Labor Statistics is announcing its preliminary estimates of the upcoming annual benchmark revision to the establishment survey employment series. The final benchmark revision will be issued on February 4, 2011, with the publication of the January 2011 Employment Situation news release.

Each year, the Current Employment Statistics (CES) survey employment estimates are benchmarked to comprehensive counts of employment for the month of March derived from state unemployment insurance tax records that nearly all employers are required to file. For national CES employment series, the average of the absolute values of the annual benchmark revisions over the last 10 years is 0.3 percent at the total nonfarm level. The preliminary estimate of the benchmark revision indicates a downward adjustment to March 2010 total nonfarm employment of 366,000 (-0.3 percent).

Table B shows the March 2010 preliminary benchmark revisions by major industry sector. As is typically the case, many of the individual industry series show larger percentage revisions than the total nonfarm series, primarily because statistical sampling error is greater at more detailed levels than at a total level.

Table B. National Current Employment Statistics March 2010 preliminary benchmark revisions by major industry sector

Industry	Benchmark revision	Percent benchmark revision
Total nonfarm	-366,000	-0.3
Total private	-371,000	-.4
Mining and logging	-20,000	-3.0
Construction	-62,000	-1.2
Manufacturing	-114,000	-1.0
Trade, transportation, and utilities	-144,000	-.6
Information	-11,000	-.4
Financial activities	42,000	.6
Professional and business services	14,000	.1
Education and health services	6,000	(1)
Leisure and hospitality	-91,000	-.7
Other services	9,000	.2
Government	5,000	(1)

¹ Less than 0.05 percent

HOUSEHOLD DATA

Summary table A. Household data, seasonally adjusted

[Numbers in thousands]

Category	Sept. 2009	July 2010	Aug. 2010	Sept. 2010	Change from: Aug. 2010- Sept. 2010
Employment status					
Civilian noninstitutional population.....	236,322	237,890	238,099	238,322	223
Civilian labor force.....	153,927	153,560	154,110	154,158	48
Participation rate.....	65.1	64.6	64.7	64.7	0.0
Employed.....	138,768	138,960	139,250	139,391	141
Employment-population ratio.....	58.7	58.4	58.5	58.5	0.0
Unemployed.....	15,159	14,599	14,860	14,767	-93
Unemployment rate.....	9.8	9.5	9.6	9.6	0.0
Not in labor force.....	82,396	84,330	83,989	84,164	175
Unemployment rates					
Total, 16 years and over.....	9.8	9.5	9.6	9.6	0.0
Adult men (20 years and over).....	10.3	9.7	9.8	9.8	0.0
Adult women (20 years and over).....	7.9	7.9	8.0	8.0	0.0
Teenagers (16 to 19 years).....	26.1	26.1	26.3	26.0	-0.3
White.....	9.1	8.6	8.7	8.7	0.0
Black or African American.....	15.5	15.6	16.3	16.1	-0.2
Asian (not seasonally adjusted).....	7.4	8.2	7.2	6.4	-
Hispanic or Latino ethnicity.....	12.7	12.1	12.0	12.4	0.4
Total, 25 years and over.....	8.6	8.1	8.3	8.3	0.0
Less than a high school diploma.....	15.0	13.8	14.0	15.4	1.4
High school graduates, no college.....	10.8	10.1	10.3	10.0	-0.3
Some college or associate degree.....	8.6	8.3	8.7	9.1	0.4
Bachelor's degree and higher.....	4.8	4.5	4.6	4.4	-0.2
Reason for unemployment					
Job losers and persons who completed temporary jobs.....	10,236	9,125	9,305	9,401	96
Job leavers.....	869	900	874	807	-67
Reentrants.....	3,255	3,393	3,411	3,436	25
New entrants.....	1,134	1,188	1,259	1,187	-72
Duration of unemployment					
Less than 5 weeks.....	2,938	2,839	2,760	2,891	131
5 to 14 weeks.....	3,838	3,060	3,635	3,350	-285
15 to 26 weeks.....	2,958	2,151	2,235	2,336	101
27 weeks and over.....	5,447	6,572	6,249	6,123	-126
Employed persons at work part time					
Part time for economic reasons.....	9,158	8,529	8,860	9,472	612
Slack work or business conditions.....	6,815	6,119	6,380	6,733	353
Could only find part-time work.....	2,081	2,246	2,347	2,456	109
Part time for noneconomic reasons.....	18,590	18,157	18,558	18,234	-324
Persons not in the labor force (not seasonally adjusted)					
Marginally attached to the labor force.....	2,219	2,622	2,370	2,548	-
Discouraged workers.....	706	1,185	1,110	1,209	-

- Over-the-month changes are not displayed for not seasonally adjusted data.

NOTE: Persons whose ethnicity is identified as Hispanic or Latino may be of any race. Detail for the seasonally adjusted data shown in this table will not necessarily add to totals because of the independent seasonal adjustment of the various series. Updated population controls are introduced annually with the release of January data.

ESTABLISHMENT DATA
Summary table B. Establishment data, seasonally adjusted

Category	Sept. 2009	July 2010	Aug. 2010 ^p	Sept. 2010 ^p
EMPLOYMENT BY SELECTED INDUSTRY (Over-the-month change, in thousands)				
Total nonfarm.....	-225	-66	-57	-95
Total private.....	-186	117	93	64
Goods-producing.....	-121	37	10	-22
Mining and logging.....	-2	7	7	5
Construction.....	-71	-2	31	-21
Manufacturing.....	-48	32	-28	-6
Durable goods ¹	-39	35	-25	0
Motor vehicles and parts.....	-0.8	23.1	-22.2	0.6
Nondurable goods.....	-9	-3	-3	-6
Private service-providing ¹	-65	80	83	86
Wholesale trade.....	-8.3	7.2	-0.5	2.2
Retail trade.....	-48.3	11.1	-2.0	5.7
Transportation and warehousing.....	-10.4	14.5	0.6	9.6
Information.....	1	6	-1	-5
Financial activities.....	-12	-10	-3	-1
Professional and business services ¹	-22	-5	28	14
Temporary help services.....	-9.2	-6.7	17.7	16.9
Education and health services ¹	26	26	36	17
Health care and social assistance.....	33.7	27.8	36.2	32.0
Leisure and hospitality.....	16	11	20	38
Other services.....	-9	22	5	7
Government.....	-39	-183	-150	-159
WOMEN AND PRODUCTION AND NONSUPERVISORY EMPLOYEES AS A PERCENT OF ALL EMPLOYEES ²				
Total nonfarm women employees.....	49.9	49.7	49.6	49.6
Total private women employees.....	48.4	48.2	48.1	48.1
Total private production and nonsupervisory employees.....	82.3	82.4	82.4	82.4
HOURS AND EARNINGS ALL EMPLOYEES				
Total private				
Average weekly hours.....	33.8	34.2	34.2	34.2
Average hourly earnings.....	\$ 22.30	\$ 22.59	\$ 22.66	\$ 22.67
Average weekly earnings.....	\$ 753.74	\$ 772.58	\$ 774.97	\$ 775.31
Index of aggregate weekly hours (2007=100) ³	90.9	92.4	92.5	92.5
Over-the-month percent change.....	-0.2	0.4	0.1	0.0
Index of aggregate weekly payrolls (2007=100) ⁴	96.7	99.5	99.9	100.0
Over-the-month percent change.....	-0.1	0.5	0.4	0.1
HOURS AND EARNINGS PRODUCTION AND NONSUPERVISORY EMPLOYEES				
Total private				
Average weekly hours.....	33.1	33.4	33.5	33.5
Average hourly earnings.....	\$ 18.71	\$ 19.04	\$ 19.09	\$ 19.10
Average weekly earnings.....	\$ 619.30	\$ 635.94	\$ 639.52	\$ 639.85
Index of aggregate weekly hours (2002=100) ³	97.8	99.2	99.5	99.6
Over-the-month percent change.....	-0.2	0.1	0.3	0.1
Index of aggregate weekly payrolls (2002=100) ⁴	122.2	126.1	126.9	127.1
Over-the-month percent change.....	-0.1	0.2	0.6	0.2
DIFFUSION INDEX (Over 1-month span) ⁵				
Total private.....	32.9	57.2	54.1	49.8
Manufacturing.....	20.1	52.4	48.2	46.3

1 Includes other industries, not shown separately.

2 Data relate to production employees in mining and logging and manufacturing, construction employees in construction, and nonsupervisory employees in the service-providing industries.

3 The indexes of aggregate weekly hours are calculated by dividing the current month's estimates of aggregate hours by the corresponding annual average aggregate hours.

4 The indexes of aggregate weekly payrolls are calculated by dividing the current month's estimates of aggregate weekly payrolls by the corresponding annual average aggregate weekly payrolls.

5 Figures are the percent of industries with employment increasing plus one-half of the industries with unchanged employment, where 50 percent indicates an equal balance between industries with increasing and decreasing employment.

p Preliminary

Frequently Asked Questions about Employment and Unemployment Estimates

Why are there two monthly measures of employment?

The household survey and establishment survey both produce sample-based estimates of employment and both have strengths and limitations. The establishment survey employment series has a smaller margin of error on the measurement of month-to-month change than the household survey because of its much larger sample size. An over-the-month employment change of about 100,000 is statistically significant in the establishment survey, while the threshold for a statistically significant change in the household survey is about 400,000. However, the household survey has a more expansive scope than the establishment survey because it includes the self-employed, unpaid family workers, agricultural workers, and private household workers, who are excluded by the establishment survey. The household survey also provides estimates of employment for demographic groups.

Are undocumented immigrants counted in the surveys?

It is likely that both surveys include at least some undocumented immigrants. However, neither the establishment nor the household survey is designed to identify the legal status of workers. Therefore, it is not possible to determine how many are counted in either survey. The establishment survey does not collect data on the legal status of workers. The household survey does include questions which identify the foreign and native born, but it does not include questions about the legal status of the foreign born.

Why does the establishment survey have revisions?

The establishment survey revises published estimates to improve its data series by incorporating additional information that was not available at the time of the initial publication of the estimates. The establishment survey revises its initial monthly estimates twice, in the immediately succeeding 2 months, to incorporate additional sample receipts from respondents in the survey and recalculated seasonal adjustment factors. For more information on the monthly revisions, please visit www.bls.gov/ces/cesrevinfo.htm.

On an annual basis, the establishment survey incorporates a benchmark revision that re-anchors estimates to nearly complete employment counts available from unemployment insurance tax records. The benchmark helps to control for sampling and modeling errors in the estimates. For more information on the annual benchmark revision, please visit www.bls.gov/web/cesbmart.htm.

Does the establishment survey sample include small firms?

Yes; about 40 percent of the establishment survey sample is comprised of business establishments with fewer than 20 employees. The establishment survey sample is designed to maximize the reliability of the total nonfarm employment estimate; firms from all size classes and industries are appropriately sampled to achieve that goal.

Does the establishment survey account for employment from new businesses?

Yes; monthly establishment survey estimates include an adjustment to account for the net employment change generated by business births and deaths. The adjustment comes from an econometric model that forecasts the monthly net jobs impact of business births and deaths based on the actual past values of the net impact that can be observed with a lag from the Quarterly Census of Employment and Wages. The establishment survey uses modeling rather than sampling for this purpose because the survey is not

immediately able to bring new businesses into the sample. There is an unavoidable lag between the birth of a new firm and its appearance on the sampling frame and availability for selection. BLS adds new businesses to the survey twice a year.

Is the count of unemployed persons limited to just those people receiving unemployment insurance benefits?

No; the estimate of unemployment is based on a monthly sample survey of households. All persons who are without jobs and are actively seeking and available to work are included among the unemployed. (People on temporary layoff are included even if they do not actively seek work.) There is no requirement or question relating to unemployment insurance benefits in the monthly survey.

Does the official unemployment rate exclude people who have stopped looking for work?

Yes; however, there are separate estimates of persons outside the labor force who want a job, including those who have stopped looking because they believe no jobs are available (discouraged workers). In addition, alternative measures of labor underutilization (discouraged workers and other groups not officially counted as unemployed) are published each month in The Employment Situation news release.

Technical Note

This news release presents statistics from two major surveys, the Current Population Survey (household survey) and the Current Employment Statistics survey (establishment survey). The household survey provides information on the labor force, employment, and unemployment that appears in the "A" tables, marked HOUSEHOLD DATA. It is a sample survey of about 60,000 households conducted by the U.S. Census Bureau for the U.S. Bureau of Labor Statistics (BLS).

The establishment survey provides information on employment, hours, and earnings of employees on nonfarm payrolls; the data appear in the "B" tables, marked ESTABLISHMENT DATA. BLS collects these data each month from the payroll records of a sample of nonagricultural business establishments. The sample includes about 140,000 businesses and government agencies representing approximately 410,000 worksites and is drawn from a sampling frame of roughly 8.9 million unemployment insurance tax accounts. The active sample includes approximately one-third of all nonfarm payroll employees.

For both surveys, the data for a given month relate to a particular week or pay period. In the household survey, the reference period is generally the calendar week that contains the 12th day of the month. In the establishment survey, the reference period is the pay period including the 12th, which may or may not correspond directly to the calendar week.

Coverage, definitions, and differences between surveys

Household survey. The sample is selected to reflect the entire civilian noninstitutional population. Based on responses to a series of questions on work and job search activities, each person 16 years and over in a sample household is classified as employed, unemployed, or not in the labor force.

People are classified as *employed* if they did any work at all as paid employees during the reference week; worked in their own business, profession, or on their own farm; or worked without pay at least 15 hours in a family business or farm. People are also counted as employed if they were temporarily absent from their jobs because of illness, bad weather, vacation, labor-management disputes, or personal reasons.

People are classified as *unemployed* if they meet all of the following criteria: they had no employment during the reference week; they were available for work at that time; and they made specific efforts to find employment sometime during the 4-week period ending with the reference week. Persons laid off from a job and expecting recall need not be looking for work to be counted as unemployed. The unemployment data derived from the household survey in no way depend upon the eligibility for or receipt of unemployment insurance benefits.

The *civilian labor force* is the sum of employed and unemployed persons. Those not classified as employed or unemployed are *not in the labor force*. The *unemployment rate* is the number unemployed as a percent of the labor force. The *labor force participation rate* is the labor force as a percent of the population, and the *employment-population ratio* is the employed as a percent of the population. Additional information about the household survey can be found at www.bls.gov/cps/documentation.htm.

Establishment survey. The sample establishments are drawn from private nonfarm businesses such as factories, offices, and stores, as well as from federal, state, and local government entities. *Employees on nonfarm payrolls* are those who received pay for any part of the reference pay period, including persons on paid leave. Persons are counted in each job they hold. *Hours and earnings* data are produced for the private sector for all employees and for production and nonsupervisory employees. *Production and nonsupervisory employees* are defined as production and related employees in manufacturing and mining and logging, construction workers in construction, and non-supervisory employees in private service-providing industries.

Industries are classified on the basis of an establishment's principal activity in accordance with the 2007 version of the North American Industry Classification System. Additional information about the establishment survey can be found at www.bls.gov/ces/#technical.

Differences in employment estimates. The numerous conceptual and methodological differences between the household and establishment surveys result in important distinctions in the employment estimates derived from the surveys. Among these are:

- The household survey includes agricultural workers, the self-employed, unpaid family workers, and private household workers among the employed. These groups are excluded from the establishment survey.
- The household survey includes people on unpaid leave among the employed. The establishment survey does not.
- The household survey is limited to workers 16 years of age and older. The establishment survey is not limited by age.
- The household survey has no duplication of individuals, because individuals are counted only once, even if they hold more than one job. In the establishment survey, employees working at more than one job and thus appearing on more than one payroll are counted separately for each appearance.

Seasonal adjustment

Over the course of a year, the size of the nation's labor force and the levels of employment and unemployment undergo regularly occurring fluctuations. These events may result from seasonal changes in weather, major holidays, and the opening and closing of schools. The effect of such seasonal variation can be very large.

Because these seasonal events follow a more or less regular pattern each year, their influence on the level of a series can be tempered by adjusting for regular seasonal variation. These adjustments make nonseasonal developments, such as declines in employment or increases in the participation of women in the labor force, easier to spot. For example, in the household survey, the large number of youth entering the labor force each June is likely to obscure any other changes that have taken place relative to May, making it difficult to determine if the level of economic activity has risen or declined. Similarly, in the establishment survey, payroll employment in education declines by about 20 percent at the end of the spring term and later rises with the start of the fall term, obscuring the underlying employment trends in the industry. Because seasonal employment changes at the end and beginning of the school year can be estimated, the statistics can be adjusted to make underlying employment patterns more discernable. The seasonally adjusted figures provide a more useful tool with which to analyze changes in month-to-month economic activity.

Many seasonally adjusted series are independently adjusted in both the household and establishment surveys. However, the adjusted series for many major estimates, such as total payroll employment, employment in most major sectors, total employment, and unemployment are computed by aggregating independently adjusted component series. For example, total unemployment is derived by summing the adjusted series for four major age-sex components; this differs from the unemployment estimate that would be obtained by directly adjusting the total or by combining the duration, reasons, or more detailed age categories.

For both the household and establishment surveys, a concurrent seasonal adjustment methodology is used in which new seasonal factors are calculated each month using all relevant data, up to and including the data for the current month. In the household survey, new seasonal factors are used to adjust only the current month's data. In the establishment survey, however, new seasonal factors are used each month to adjust the three most recent monthly estimates. The prior 2 months are routinely revised to incorporate additional sample reports and recalculated seasonal adjustment factors. In both surveys, 5-year revisions to historical data are made once a year.

Reliability of the estimates

Statistics based on the household and establishment surveys are subject to both sampling and nonsampling

error. When a sample rather than the entire population is surveyed, there is a chance that the sample estimates may differ from the "true" population values they represent. The exact difference, or *sampling error*, varies depending on the particular sample selected, and this variability is measured by the standard error of the estimate. There is about a 90-percent chance, or level of confidence, that an estimate based on a sample will differ by no more than 1.6 standard errors from the "true" population value because of sampling error. BLS analyses are generally conducted at the 90-percent level of confidence.

For example, the confidence interval for the monthly change in total nonfarm employment from the establishment survey is on the order of plus or minus 100,000. Suppose the estimate of nonfarm employment increases by 50,000 from one month to the next. The 90-percent confidence interval on the monthly change would range from -50,000 to +150,000 (50,000 +/- 100,000). These figures do not mean that the sample results are off by these magnitudes, but rather that there is about a 90-percent chance that the "true" over-the-month change lies within this interval. Since this range includes values of less than zero, we could not say with confidence that nonfarm employment had, in fact, increased that month. If, however, the reported nonfarm employment rise was 250,000, then all of the values within the 90-percent confidence interval would be greater than zero. In this case, it is likely (at least a 90-percent chance) that nonfarm employment had, in fact, risen that month. At an unemployment rate of around 5.5 percent, the 90-percent confidence interval for the monthly change in unemployment as measured by the household survey is about +/- 280,000, and for the monthly change in the unemployment rate it is about +/- 0.19 percentage point.

In general, estimates involving many individuals or establishments have lower standard errors (relative to the size of the estimate) than estimates which are based on a small number of observations. The precision of estimates also is improved when the data are cumulated over time, such as for quarterly and annual averages.

The household and establishment surveys are also affected by *nonsampling error*, which can occur for many reasons, including the failure to sample a segment of the population, inability to obtain information for all respondents in the sample, inability or unwillingness of respondents to provide correct information on a timely basis, mistakes made by respondents, and errors made in the collection or processing of the data.

For example, in the establishment survey, estimates for the most recent 2 months are based on incomplete returns; for this reason, these estimates are labeled preliminary in the tables. It is only after two successive revisions to a monthly estimate, when nearly all sample reports have been received, that the estimate is considered final.

Another major source of nonsampling error in the establishment survey is the inability to capture, on a timely basis, employment generated by new firms. To correct for this systematic underestimation of employment growth, an estimation procedure with two components is used to

account for business births. The first component excludes employment losses from business deaths from sample-based estimation in order to offset the missing employment gains from business births. This is incorporated into the sample-based estimation procedure by simply not reflecting sample units going out of business, but imputing to them the same employment trend as the other firms in the sample. This procedure accounts for most of the net birth/death employment.

The second component is an ARIMA time series model designed to estimate the residual net birth/death employment not accounted for by the imputation. The historical time series used to create and test the ARIMA model was derived from the unemployment insurance universe micro-level database, and reflects the actual residual net of births and deaths over the past 5 years.

The sample-based estimates from the establishment survey are adjusted once a year (on a lagged basis) to

universe counts of payroll employment obtained from administrative records of the unemployment insurance program. The difference between the March sample-based employment estimates and the March universe counts is known as a benchmark revision, and serves as a rough proxy for total survey error. The new benchmarks also incorporate changes in the classification of industries. Over the past decade, absolute benchmark revisions for total nonfarm employment have averaged 0.3 percent, with a range from -0.7 to 0.6 percent.

Other information

Information in this release will be made available to sensory impaired individuals upon request. Voice phone: (202) 691-5200; Federal Relay Service: (800) 877-8339.

HOUSEHOLD DATA

Table A-1. Employment status of the civilian population by sex and age

[Numbers in thousands]

Employment status, sex, and age	Not seasonally adjusted			Seasonally adjusted ¹					
	Sept. 2009	Aug. 2010	Sept. 2010	Sept. 2009	May 2010	June 2010	July 2010	Aug. 2010	Sept. 2010
TOTAL									
Civilian noninstitutional population.....	236,322	238,099	238,322	236,322	237,499	237,690	237,890	238,099	238,322
Civilian labor force.....	153,617	154,678	153,854	153,927	154,393	153,741	153,560	154,110	154,158
Participation rate.....	65.0	65.0	64.6	65.1	65.0	64.7	64.6	64.7	64.7
Employed.....	139,079	139,919	139,715	138,768	139,420	139,119	138,960	139,250	139,391
Employment-population ratio.....	58.9	58.8	58.6	58.7	58.7	58.5	58.4	58.5	58.5
Unemployed.....	14,538	14,759	14,140	15,159	14,973	14,623	14,599	14,860	14,767
Unemployment rate.....	9.5	9.5	9.2	9.8	9.7	9.5	9.5	9.6	9.6
Not in labor force.....	82,706	83,421	84,468	82,396	83,107	83,949	84,330	83,989	84,164
Persons who currently want a job.....	5,650	6,083	5,949	5,960	5,734	5,895	5,886	5,972	6,202
Men, 16 years and over									
Civilian noninstitutional population.....	114,411	115,317	115,433	114,411	115,001	115,102	115,207	115,317	115,433
Civilian labor force.....	81,769	82,685	81,845	82,197	82,245	82,017	81,962	82,299	82,187
Participation rate.....	71.5	71.7	70.9	71.8	71.5	71.3	71.1	71.4	71.2
Employed.....	73,435	74,592	73,959	73,120	73,639	73,375	73,454	73,608	73,581
Employment-population ratio.....	64.2	64.7	64.1	63.9	64.0	63.7	63.8	63.8	63.7
Unemployed.....	8,335	8,093	7,886	9,077	8,606	8,642	8,507	8,691	8,606
Unemployment rate.....	10.2	9.8	9.6	11.0	10.5	10.5	10.4	10.6	10.5
Not in labor force.....	32,642	32,632	33,588	32,214	32,756	33,084	33,245	33,017	33,247
Men, 20 years and over									
Civilian noninstitutional population.....	105,780	106,761	106,887	105,780	106,407	106,522	106,641	106,761	106,887
Civilian labor force.....	78,661	79,426	79,081	78,977	79,237	79,110	78,971	79,332	79,307
Participation rate.....	74.4	74.4	74.0	74.7	74.5	74.3	74.1	74.3	74.2
Employed.....	71,225	72,215	71,978	70,861	71,477	71,316	71,332	71,521	71,545
Employment-population ratio.....	67.3	67.6	67.3	67.0	67.2	66.9	66.9	67.0	66.9
Unemployed.....	7,437	7,211	7,103	8,116	7,760	7,793	7,638	7,811	7,762
Unemployment rate.....	9.5	9.1	9.0	10.3	9.8	9.9	9.7	9.8	9.8
Not in labor force.....	27,119	27,335	27,806	26,803	27,170	27,412	27,671	27,429	27,581
Women, 16 years and over									
Civilian noninstitutional population.....	121,911	122,783	122,889	121,911	122,499	122,589	122,683	122,783	122,889
Civilian labor force.....	71,848	71,993	72,009	71,729	72,148	71,724	71,598	71,811	71,971
Participation rate.....	58.9	58.6	58.6	58.8	58.9	58.5	58.4	58.5	58.6
Employed.....	65,644	65,327	65,755	65,648	65,781	65,743	65,506	65,642	65,811
Employment-population ratio.....	53.8	53.2	53.5	53.8	53.7	53.6	53.4	53.5	53.6
Unemployed.....	6,203	6,666	6,254	6,081	6,367	5,981	6,092	6,169	6,161
Unemployment rate.....	8.6	9.3	8.7	8.5	8.8	8.3	8.5	8.6	8.6
Not in labor force.....	50,064	50,789	50,880	50,182	50,350	50,865	51,085	50,972	50,918
Women, 20 years and over									
Civilian noninstitutional population.....	113,522	114,481	114,596	113,522	114,160	114,264	114,372	114,481	114,596
Civilian labor force.....	68,947	68,766	69,269	68,686	69,128	68,859	68,747	68,844	69,091
Participation rate.....	60.7	60.1	60.4	60.5	60.6	60.3	60.1	60.1	60.3
Employed.....	63,398	62,845	63,653	63,280	63,505	63,516	63,314	63,356	63,586
Employment-population ratio.....	55.8	54.9	55.5	55.7	55.6	55.6	55.4	55.3	55.5
Unemployed.....	5,549	5,921	5,616	5,406	5,623	5,343	5,433	5,488	5,505
Unemployment rate.....	8.0	8.6	8.1	7.9	8.1	7.8	7.9	8.0	8.0
Not in labor force.....	44,575	45,715	45,327	44,837	45,032	45,405	45,625	45,637	45,505
Both sexes, 16 to 19 years									
Civilian noninstitutional population.....	17,020	16,857	16,839	17,020	16,932	16,904	16,877	16,857	16,839
Civilian labor force.....	6,008	6,486	5,504	6,264	6,028	5,772	5,843	5,934	5,760
Participation rate.....	35.3	38.5	32.7	36.8	35.6	34.1	34.6	35.2	34.2
Employed.....	4,456	4,859	4,084	4,627	4,438	4,286	4,315	4,373	4,261
Employment-population ratio.....	26.2	28.8	24.3	27.2	26.2	25.4	25.6	25.9	25.3
Unemployed.....	1,552	1,627	1,421	1,637	1,590	1,486	1,528	1,561	1,500
Unemployment rate.....	25.8	25.1	25.8	26.1	26.4	25.7	26.1	26.3	26.0
Not in labor force.....	11,012	10,371	11,334	10,756	10,905	11,132	11,034	10,923	11,079

¹ The population figures are not adjusted for seasonal variation; therefore, identical numbers appear in the unadjusted and seasonally adjusted columns.

NOTE: Updated population controls are introduced annually with the release of January data.

HOUSEHOLD DATA

Table A-2. Employment status of the civilian population by race, sex, and age

[Numbers in thousands]

Employment status, race, sex, and age	Not seasonally adjusted			Seasonally adjusted ¹					
	Sept. 2009	Aug. 2010	Sept. 2010	Sept. 2009	May 2010	June 2010	July 2010	Aug. 2010	Sept. 2010
WHITE									
Civilian noninstitutional population.....	191,244	192,245	192,391	191,244	191,856	191,979	192,109	192,245	192,391
Civilian labor force.....	125,311	125,710	125,273	125,581	125,429	124,959	125,060	125,362	125,404
Participation rate.....	65.5	65.4	65.1	65.7	65.4	65.1	65.1	65.2	65.2
Employed.....	114,496	114,941	114,900	114,215	114,359	114,163	114,300	114,470	114,500
Employment-population ratio.....	59.9	59.8	59.7	59.7	59.6	59.5	59.5	59.5	59.5
Unemployed.....	10,815	10,769	10,373	11,366	11,070	10,797	10,760	10,893	10,904
Unemployment rate.....	8.6	8.6	8.3	9.1	8.8	8.6	8.6	8.7	8.7
Not in labor force.....	65,933	66,535	67,118	65,663	66,427	67,019	67,049	66,883	66,987
Men, 20 years and over									
Civilian labor force.....	65,286	65,602	65,424	65,548	65,419	65,349	65,412	65,590	65,583
Participation rate.....	75.1	74.9	74.6	75.4	74.9	74.7	74.7	74.9	74.8
Employed.....	59,578	60,221	60,102	59,279	59,639	59,561	59,662	59,738	59,755
Employment-population ratio.....	68.5	68.7	68.5	68.1	68.3	68.1	68.2	68.2	68.1
Unemployed.....	5,708	5,381	5,321	6,269	5,780	5,788	5,750	5,852	5,829
Unemployment rate.....	8.7	8.2	8.1	9.6	8.8	8.9	8.8	8.9	8.9
Women, 20 years and over									
Civilian labor force.....	55,006	54,751	55,212	54,841	55,062	54,883	54,818	54,848	55,011
Participation rate.....	60.3	59.7	60.1	60.1	60.1	59.9	59.8	59.8	59.9
Employed.....	51,055	50,548	51,231	50,956	50,981	50,971	50,943	50,979	51,062
Employment-population ratio.....	56.0	55.1	55.8	55.8	55.7	55.6	55.5	55.5	55.6
Unemployed.....	3,951	4,203	3,981	3,884	4,081	3,911	3,875	3,869	3,949
Unemployment rate.....	7.2	7.7	7.2	7.1	7.4	7.1	7.1	7.1	7.2
Both sexes, 16 to 19 years									
Civilian labor force.....	5,019	5,357	4,637	5,192	4,948	4,728	4,830	4,924	4,810
Participation rate.....	38.6	41.7	36.1	39.9	38.3	36.7	37.5	38.3	37.5
Employed.....	3,863	4,173	3,566	3,980	3,739	3,630	3,695	3,752	3,683
Employment-population ratio.....	29.7	32.5	27.8	30.6	28.9	28.2	28.7	29.2	28.7
Unemployed.....	1,156	1,184	1,071	1,212	1,209	1,097	1,135	1,172	1,127
Unemployment rate.....	23.0	22.1	23.1	23.3	24.4	23.2	23.5	23.8	23.4
BLACK OR AFRICAN AMERICAN									
Civilian noninstitutional population.....	28,330	28,755	28,794	28,330	28,653	28,685	28,718	28,755	28,794
Civilian labor force.....	17,436	17,991	17,716	17,455	17,983	17,768	17,651	17,879	17,754
Participation rate.....	61.5	62.6	61.5	61.6	62.8	61.9	61.5	62.2	61.7
Employed.....	14,771	15,052	14,891	14,754	15,189	15,036	14,896	14,967	14,895
Employment-population ratio.....	52.1	52.3	51.7	52.1	53.0	52.4	51.9	52.0	51.7
Unemployed.....	2,665	2,939	2,826	2,701	2,794	2,732	2,755	2,911	2,860
Unemployment rate.....	15.3	16.3	15.9	15.5	15.5	15.4	15.6	16.3	16.1
Not in labor force.....	10,894	10,764	11,078	10,875	10,670	10,917	11,067	10,877	11,040
Men, 20 years and over									
Civilian labor force.....	7,785	8,131	8,017	7,820	8,184	8,062	8,004	8,082	8,064
Participation rate.....	68.1	69.8	68.7	68.4	70.6	69.4	68.8	69.4	69.1
Employed.....	6,583	6,813	6,699	6,526	6,782	6,656	6,667	6,687	6,645
Employment-population ratio.....	57.6	58.5	57.4	57.1	58.5	57.3	57.3	57.4	56.9
Unemployed.....	1,203	1,318	1,318	1,294	1,402	1,406	1,337	1,395	1,419
Unemployment rate.....	15.5	16.2	16.4	16.5	17.1	17.4	16.7	17.3	17.6
Women, 20 years and over									
Civilian labor force.....	9,029	9,123	9,154	8,947	9,106	9,070	9,005	9,103	9,082
Participation rate.....	63.5	63.1	63.2	62.9	63.3	62.9	62.4	63.0	62.7
Employed.....	7,820	7,835	7,914	7,827	7,977	7,998	7,847	7,902	7,940
Employment-population ratio.....	55.0	54.2	54.7	55.0	55.4	55.5	54.4	54.7	54.9
Unemployed.....	1,209	1,288	1,239	1,120	1,128	1,072	1,157	1,202	1,143
Unemployment rate.....	13.4	14.1	13.5	12.5	12.4	11.8	12.9	13.2	12.6
Both sexes, 16 to 19 years									
Civilian labor force.....	622	737	545	688	694	636	643	693	608
Participation rate.....	23.2	27.8	20.6	25.7	26.0	23.9	24.2	26.2	23.0
Employed.....	369	404	277	401	430	382	382	379	310
Employment-population ratio.....	13.8	15.3	10.5	15.0	16.2	14.4	14.4	14.3	11.7
Unemployed.....	253	332	268	287	263	254	261	314	298
Unemployment rate.....	40.7	45.1	49.1	41.7	38.0	39.9	40.6	45.4	49.0
ASIAN									
Civilian noninstitutional population.....	10,826	11,265	11,283	-	-	-	-	-	-

See footnotes at end of table.

HOUSEHOLD DATA

Table A-2. Employment status of the civilian population by race, sex, and age — Continued

[Numbers in thousands]

Employment status, race, sex, and age	Not seasonally adjusted			Seasonally adjusted ¹					
	Sept. 2009	Aug. 2010	Sept. 2010	Sept. 2009	May 2010	June 2010	July 2010	Aug. 2010	Sept. 2010
Civilian labor force.....	7,097	7,311	7,197	-	-	-	-	-	-
Participation rate.....	65.6	64.9	63.8	-	-	-	-	-	-
Employed.....	6,570	6,783	6,734	-	-	-	-	-	-
Employment-population ratio.....	60.7	60.2	59.7	-	-	-	-	-	-
Unemployed.....	527	528	463	-	-	-	-	-	-
Unemployment rate.....	7.4	7.2	6.4	-	-	-	-	-	-
Not in labor force.....	3,729	3,955	4,087	-	-	-	-	-	-

¹ The population figures are not adjusted for seasonal variation; therefore, identical numbers appear in the unadjusted and seasonally adjusted columns.

- Data not available.

NOTE: Estimates for the above race groups will not sum to totals shown in table A-1 because data are not presented for all races. Updated population controls are introduced annually with the release of January data.

HOUSEHOLD DATA

Table A-3. Employment status of the Hispanic or Latino population by sex and age

[Numbers in thousands]

Employment status, sex, and age	Not seasonally adjusted			Seasonally adjusted ¹					
	Sept. 2009	Aug. 2010	Sept. 2010	Sept. 2009	May 2010	June 2010	July 2010	Aug. 2010	Sept. 2010
HISPANIC OR LATINO ETHNICITY									
Civilian noninstitutional population.....	33,110	33,836	33,927	33,110	33,578	33,662	33,747	33,836	33,927
Civilian labor force.....	22,413	22,832	22,918	22,444	22,789	22,674	22,738	22,729	22,910
Participation rate.....	67.7	67.5	67.6	67.8	67.9	67.4	67.4	67.2	67.5
Employed.....	19,680	20,116	20,191	19,595	19,953	19,854	19,987	20,002	20,070
Employment-population ratio.....	59.4	59.5	59.5	59.2	59.4	59.0	59.2	59.1	59.2
Unemployed.....	2,733	2,716	2,728	2,849	2,836	2,820	2,751	2,726	2,840
Unemployment rate.....	12.2	11.9	11.9	12.7	12.4	12.4	12.1	12.0	12.4
Not in labor force.....	10,697	11,004	11,009	10,666	10,789	10,989	11,009	11,107	11,017
Men, 20 years and over									
Civilian labor force.....	12,809	13,049	13,121	-	-	-	-	-	-
Participation rate.....	83.1	82.8	83.0	-	-	-	-	-	-
Employed.....	11,297	11,694	11,664	-	-	-	-	-	-
Employment-population ratio.....	73.3	74.2	73.8	-	-	-	-	-	-
Unemployed.....	1,512	1,355	1,457	-	-	-	-	-	-
Unemployment rate.....	11.8	10.4	11.1	-	-	-	-	-	-
Women, 20 years and over									
Civilian labor force.....	8,571	8,718	8,865	-	-	-	-	-	-
Participation rate.....	58.9	58.8	59.6	-	-	-	-	-	-
Employed.....	7,655	7,708	7,883	-	-	-	-	-	-
Employment-population ratio.....	52.6	52.0	53.0	-	-	-	-	-	-
Unemployed.....	916	1,010	982	-	-	-	-	-	-
Unemployment rate.....	10.7	11.6	11.1	-	-	-	-	-	-
Both sexes, 16 to 19 years									
Civilian labor force.....	1,033	1,065	933	-	-	-	-	-	-
Participation rate.....	32.9	32.8	28.7	-	-	-	-	-	-
Employed.....	729	714	643	-	-	-	-	-	-
Employment-population ratio.....	23.2	22.0	19.8	-	-	-	-	-	-
Unemployed.....	305	351	289	-	-	-	-	-	-
Unemployment rate.....	29.5	33.0	31.0	-	-	-	-	-	-

¹ The population figures are not adjusted for seasonal variation; therefore, identical numbers appear in the unadjusted and seasonally adjusted columns.

- Data not available.

NOTE: Persons whose ethnicity is identified as Hispanic or Latino may be of any race. Updated population controls are introduced annually with the release of January data.

HOUSEHOLD DATA

Table A-4. Employment status of the civilian population 25 years and over by educational attainment

[Numbers in thousands]

Educational attainment	Not seasonally adjusted			Seasonally adjusted					
	Sept. 2009	Aug. 2010	Sept. 2010	Sept. 2009	May 2010	June 2010	July 2010	Aug. 2010	Sept. 2010
Less than a high school diploma									
Civilian labor force.....	12,262	11,750	11,834	12,263	12,133	12,095	12,048	11,819	11,821
Participation rate.....	47.1	46.1	46.7	47.1	45.8	45.4	47.3	46.4	46.7
Employed.....	10,580	10,189	10,143	10,426	10,319	10,391	10,390	10,165	10,001
Employment-population ratio.....	40.6	40.0	40.0	40.0	39.0	39.0	40.8	39.9	39.5
Unemployed.....	1,682	1,562	1,691	1,837	1,814	1,704	1,658	1,654	1,820
Unemployment rate.....	13.7	13.3	14.3	15.0	15.0	14.1	13.8	14.0	15.4
High school graduates, no college¹									
Civilian labor force.....	37,957	38,156	37,982	38,059	38,433	38,107	37,941	38,314	38,116
Participation rate.....	61.9	61.7	61.6	62.0	62.0	62.0	61.6	61.9	61.9
Employed.....	34,147	34,458	34,460	33,956	34,251	33,993	34,113	34,373	34,289
Employment-population ratio.....	55.7	55.7	55.9	55.3	55.2	55.3	55.4	55.6	55.6
Unemployed.....	3,810	3,698	3,521	4,104	4,182	4,114	3,829	3,940	3,827
Unemployment rate.....	10.0	9.7	9.3	10.8	10.9	10.8	10.1	10.3	10.0
Some college or associate degree									
Civilian labor force.....	36,693	37,074	36,988	36,732	36,832	36,586	36,713	37,068	37,037
Participation rate.....	70.6	70.5	70.3	70.7	71.0	70.7	70.0	70.5	70.4
Employed.....	33,704	33,751	33,750	33,583	33,780	33,579	33,652	33,850	33,684
Employment-population ratio.....	64.9	64.2	64.1	64.6	65.1	64.9	64.1	64.4	64.0
Unemployed.....	2,989	3,323	3,239	3,149	3,052	3,007	3,061	3,218	3,352
Unemployment rate.....	8.1	9.0	8.8	8.6	8.3	8.2	8.3	8.7	9.1
Bachelor's degree and higher²									
Civilian labor force.....	45,958	45,733	46,573	45,910	45,718	46,246	46,015	45,676	46,472
Participation rate.....	77.4	75.9	76.6	77.3	77.3	77.3	76.2	75.8	76.4
Employed.....	43,676	43,460	44,488	43,686	43,581	44,200	43,924	43,582	44,420
Employment-population ratio.....	73.6	72.1	73.2	73.6	73.6	73.8	72.7	72.3	73.1
Unemployed.....	2,283	2,273	2,084	2,224	2,136	2,046	2,091	2,094	2,052
Unemployment rate.....	5.0	5.0	4.5	4.8	4.7	4.4	4.5	4.6	4.4

1 Includes persons with a high school diploma or equivalent.

2 Includes persons with bachelor's, master's, professional, and doctoral degrees.

NOTE: Updated population controls are introduced annually with the release of January data.

HOUSEHOLD DATA

Table A-5. Employment status of the civilian population 18 years and over by veteran status, period of service, and sex, not seasonally adjusted

[Numbers in thousands]

Employment status, veteran status, and period of service	Total		Men		Women	
	Sept. 2009	Sept. 2010	Sept. 2009	Sept. 2010	Sept. 2009	Sept. 2010
VETERANS, 18 years and over						
Civilian noninstitutional population.....	22,104	21,933	20,343	20,142	1,761	1,791
Civilian labor force.....	11,970	11,683	10,812	10,590	1,157	1,093
Participation rate.....	54.2	53.3	53.2	52.6	65.7	61.0
Employed.....	10,979	10,746	9,926	9,743	1,054	1,003
Employment-population ratio.....	49.7	49.0	48.8	48.4	59.8	56.0
Unemployed.....	990	937	887	847	104	90
Unemployment rate.....	8.3	8.0	8.2	8.0	9.0	8.2
Not in labor force.....	10,134	10,250	9,531	9,552	604	698
Gulf War-era II veterans						
Civilian noninstitutional population.....	1,976	2,228	1,626	1,828	350	399
Civilian labor force.....	1,657	1,857	1,388	1,575	269	282
Participation rate.....	83.9	83.3	85.4	86.1	76.9	70.6
Employed.....	1,481	1,666	1,253	1,411	228	256
Employment-population ratio.....	75.0	74.8	77.1	77.1	65.1	64.1
Unemployed.....	176	190	135	164	41	26
Unemployment rate.....	10.6	10.2	9.7	10.4	15.4	9.2
Not in labor force.....	319	371	238	254	81	117
Gulf War-era I veterans						
Civilian noninstitutional population.....	3,010	2,966	2,544	2,525	466	441
Civilian labor force.....	2,630	2,515	2,267	2,199	363	316
Participation rate.....	87.4	84.8	89.1	87.1	78.0	71.7
Employed.....	2,384	2,347	2,049	2,057	335	289
Employment-population ratio.....	79.2	79.1	80.5	81.5	71.9	65.6
Unemployed.....	246	169	218	142	29	27
Unemployment rate.....	9.4	6.7	9.6	6.4	7.9	8.6
Not in labor force.....	380	451	278	326	103	125
World War II, Korean War, and Vietnam-era veterans						
Civilian noninstitutional population.....	11,270	10,911	10,891	10,547	380	364
Civilian labor force.....	4,224	3,984	4,083	3,870	141	115
Participation rate.....	37.5	36.5	37.5	36.7	37.2	31.5
Employed.....	3,921	3,649	3,790	3,545	131	104
Employment-population ratio.....	34.8	33.4	34.8	33.6	34.4	28.6
Unemployed.....	304	336	293	325	11	10
Unemployment rate.....	7.2	8.4	7.2	8.4	7.5	9.1
Not in labor force.....	7,046	6,927	6,808	6,677	238	250
Veterans of other service periods						
Civilian noninstitutional population.....	5,848	5,828	5,282	5,241	565	587
Civilian labor force.....	3,459	3,326	3,075	2,946	383	380
Participation rate.....	59.1	57.1	58.2	56.2	67.8	64.8
Employed.....	3,194	3,084	2,834	2,730	360	354
Employment-population ratio.....	54.6	52.9	53.6	52.1	63.7	60.4
Unemployed.....	265	242	241	216	23	26
Unemployment rate.....	7.7	7.3	7.9	7.3	6.0	6.9
Not in labor force.....	2,389	2,502	2,207	2,295	182	207
NONVETERANS, 18 years and over						
Civilian noninstitutional population.....	205,260	207,224	89,513	90,661	115,747	116,563
Civilian labor force.....	139,505	140,190	69,871	70,272	69,635	69,918
Participation rate.....	68.0	67.7	78.1	77.5	60.2	60.0
Employed.....	126,518	127,552	62,734	63,543	63,784	64,009
Employment-population ratio.....	61.6	61.6	70.1	70.1	55.1	54.9
Unemployed.....	12,987	12,638	7,136	6,728	5,851	5,909
Unemployment rate.....	9.3	9.0	10.2	9.6	8.4	8.5
Not in labor force.....	65,755	67,034	19,642	20,390	46,113	46,645

NOTE: Veterans served on active duty in the U.S. Armed Forces and were not on active duty at the time of the survey. Nonveterans never served on active duty in the U.S. Armed Forces. Veterans could have served anywhere in the world during these periods of service: Gulf War era II (September 2001-present), Gulf War era I (August 1990-August 2001), Vietnam era (August 1964-April 1975), Korean War (July 1950-January 1955), World War II (December 1941-December 1946), and other service periods (all other time periods). Veterans who served in more than one wartime period are classified only in the most recent one. Veterans who served during one of the selected wartime periods and another period are classified only in the wartime period. Updated population controls are introduced annually with the release of January data.

HOUSEHOLD DATA

Table A-6. Employment status of the civilian population by sex, age, and disability status, not seasonally adjusted

[Numbers in thousands]

Employment status, sex, and age	Persons with a disability		Persons with no disability	
	Sept. 2009	Sept. 2010	Sept. 2009	Sept. 2010
TOTAL, 16 years and over				
Civilian noninstitutional population.....	26,970	26,380	209,353	211,942
Civilian labor force.....	5,923	5,698	147,694	148,156
Participation rate.....	22.0	21.6	70.5	69.9
Employed.....	4,962	4,854	134,117	134,860
Employment-population ratio.....	18.4	18.4	64.1	63.6
Unemployed.....	961	844	13,577	13,296
Unemployment rate.....	16.2	14.8	9.2	9.0
Not in labor force.....	21,046	20,682	61,659	63,786
Men, 16 to 64 years				
Civilian labor force.....	2,658	2,591	75,443	75,484
Participation rate.....	36.8	35.7	83.2	82.7
Employed.....	2,148	2,198	67,855	68,236
Employment-population ratio.....	29.7	30.3	74.8	74.7
Unemployed.....	510	393	7,588	7,247
Unemployment rate.....	19.2	15.2	10.1	9.6
Not in labor force.....	4,570	4,671	15,246	15,840
Women, 16 to 64 years				
Civilian labor force.....	2,410	2,341	66,443	66,551
Participation rate.....	32.0	32.2	71.7	71.1
Employed.....	2,021	1,949	60,839	60,882
Employment-population ratio.....	26.8	26.8	65.6	65.0
Unemployed.....	389	393	5,604	5,669
Unemployment rate.....	16.2	16.8	8.4	8.5
Not in labor force.....	5,129	4,923	26,280	27,044
Both sexes, 65 years and over				
Civilian labor force.....	855	766	5,808	6,121
Participation rate.....	7.0	6.5	22.4	22.7
Employed.....	793	707	5,423	5,741
Employment-population ratio.....	6.5	6.0	20.9	21.2
Unemployed.....	62	58	385	380
Unemployment rate.....	7.2	7.6	6.6	6.2
Not in labor force.....	11,347	11,088	20,134	20,902

NOTE: A person with a disability has at least one of the following conditions: is deaf or has serious difficulty hearing; is blind or has serious difficulty seeing even when wearing glasses; has serious difficulty concentrating, remembering, or making decisions because of a physical, mental, or emotional condition; has serious difficulty walking or climbing stairs; has difficulty dressing or bathing; or has difficulty doing errands alone such as visiting a doctor's office or shopping because of a physical, mental, or emotional condition. Updated population controls are introduced annually with the release of January data.

HOUSEHOLD DATA

Table A-7. Employment status of the civilian population by nativity and sex, not seasonally adjusted

[Numbers in thousands]

Employment status and nativity	Total		Men		Women	
	Sept. 2009	Sept. 2010	Sept. 2009	Sept. 2010	Sept. 2009	Sept. 2010
Foreign born, 16 years and over						
Civilian noninstitutional population.....	35,527	36,097	17,904	18,054	17,623	18,043
Civilian labor force.....	24,189	24,488	14,351	14,437	9,838	10,051
Participation rate.....	68.1	67.8	80.2	80.0	55.8	55.7
Employed.....	21,864	22,226	12,934	13,116	8,930	9,110
Employment-population ratio.....	61.5	61.6	72.2	72.6	50.7	50.5
Unemployed.....	2,325	2,262	1,417	1,322	908	940
Unemployment rate.....	9.6	9.2	9.9	9.2	9.2	9.4
Not in labor force.....	11,338	11,609	3,553	3,617	7,785	7,992
Native born, 16 years and over						
Civilian noninstitutional population.....	200,796	202,225	96,507	97,379	104,289	104,846
Civilian labor force.....	129,428	129,366	67,418	67,408	62,010	61,958
Participation rate.....	64.5	64.0	69.9	69.2	59.5	59.1
Employed.....	117,215	117,488	60,501	60,843	56,715	56,645
Employment-population ratio.....	58.4	58.1	62.7	62.5	54.4	54.0
Unemployed.....	12,213	11,878	6,918	6,564	5,295	5,313
Unemployment rate.....	9.4	9.2	10.3	9.7	8.5	8.6
Not in labor force.....	71,368	72,859	29,088	29,971	42,279	42,887

NOTE: The foreign born are those residing in the United States who were not U.S. citizens at birth. That is, they were born outside the United States or one of its outlying areas such as Puerto Rico or Guam, to parents neither of whom was a U.S. citizen. The native born are persons who were born in the United States or one of its outlying areas such as Puerto Rico or Guam or who were born abroad of at least one parent who was a U.S. citizen. Updated population controls are introduced annually with the release of January data.

HOUSEHOLD DATA

Table A-8. Employed persons by class of worker and part-time status

[In thousands]

Category	Not seasonally adjusted			Seasonally adjusted					
	Sept. 2009	Aug. 2010	Sept. 2010	Sept. 2009	May 2010	June 2010	July 2010	Aug. 2010	Sept. 2010
CLASS OF WORKER									
Agriculture and related industries.....	2,073	2,327	2,203	2,009	2,228	2,120	2,192	2,188	2,154
Wage and salary workers.....	1,256	1,409	1,370	1,177	1,363	1,289	1,329	1,300	1,291
Self-employed workers.....	805	886	802	796	821	808	825	855	799
Unpaid family workers.....	12	31	31	-	-	-	-	-	-
Nonagricultural industries.....	137,006	137,592	137,512	136,752	137,207	136,857	136,599	136,974	137,243
Wage and salary workers.....	127,769	128,656	128,565	127,650	128,197	127,900	127,881	128,314	128,429
Government.....	20,954	20,062	20,828	20,978	21,270	21,242	20,978	20,575	20,928
Private industries.....	106,816	108,595	107,737	106,662	106,906	106,740	106,869	107,760	107,481
Private households.....	790	678	597	-	-	-	-	-	-
Other industries.....	106,026	107,916	107,139	105,885	106,204	106,065	106,270	107,118	106,900
Self-employed workers.....	9,154	8,884	8,878	9,009	8,952	8,889	8,779	8,678	8,743
Unpaid family workers.....	83	52	69	-	-	-	-	-	-
PERSONS AT WORK PART TIME¹									
All industries									
Part time for economic reasons ²	8,255	8,628	8,628	9,158	8,809	8,627	8,529	8,860	9,472
Slack work or business conditions.....	6,101	6,031	6,072	6,815	6,143	6,165	6,119	6,380	6,733
Could only find part-time work.....	1,918	2,183	2,306	2,081	2,326	2,101	2,246	2,347	2,456
Part time for noneconomic reasons ³	18,898	16,888	18,579	18,590	17,929	17,870	18,157	18,558	18,234
Nonagricultural industries									
Part time for economic reasons ²	8,134	8,509	8,540	8,983	8,661	8,472	8,386	8,730	9,336
Slack work or business conditions.....	5,998	5,953	6,020	6,695	6,041	6,074	6,018	6,304	6,640
Could only find part-time work.....	1,910	2,159	2,286	2,063	2,306	2,086	2,192	2,320	2,431
Part time for noneconomic reasons ³	18,574	16,546	18,259	18,251	17,627	17,580	17,774	18,161	17,891

1 Refers to those who worked 1 to 34 hours during the survey reference week and excludes employed persons who were absent from their jobs for the entire week.

2 Refers to those who worked 1 to 34 hours during the reference week for an economic reason such as slack work or unfavorable business conditions, inability to find full-time work, or seasonal declines in demand.

3 Refers to persons who usually work part time for noneconomic reasons such as childcare problems, family or personal obligations, school or training, retirement or Social Security limits on earnings, and other reasons. This excludes persons who usually work full time but worked only 1 to 34 hours during the reference week for reasons such as vacations, holidays, illness, and bad weather.

- Data not available.

NOTE: Detail for the seasonally adjusted data shown in this table will not necessarily add to totals because of the independent seasonal adjustment of the various series. Updated population controls are introduced annually with the release of January data.

HOUSEHOLD DATA

Table A-9. Selected employment indicators

[Numbers in thousands]

Characteristic	Not seasonally adjusted			Seasonally adjusted					
	Sept. 2009	Aug. 2010	Sept. 2010	Sept. 2009	May 2010	June 2010	July 2010	Aug. 2010	Sept. 2010
AGE AND SEX									
Total, 16 years and over.....	139,079	139,919	139,715	138,768	139,420	139,119	138,960	139,250	139,391
16 to 19 years.....	4,456	4,859	4,084	4,627	4,438	4,286	4,315	4,373	4,261
16 to 17 years.....	1,582	1,637	1,417	1,569	1,429	1,380	1,345	1,402	1,398
18 to 19 years.....	2,874	3,223	2,667	3,070	2,992	2,899	2,984	2,975	2,867
20 years and over.....	134,623	135,060	135,631	134,141	134,982	134,833	134,646	134,877	135,131
20 to 24 years.....	12,516	13,202	12,790	12,625	12,818	12,698	12,670	12,838	12,841
25 years and over.....	122,106	121,858	122,841	121,551	122,203	122,263	122,109	122,074	122,267
25 to 54 years.....	94,802	94,027	94,535	94,345	94,227	94,270	94,062	94,005	94,067
25 to 34 years.....	29,921	30,429	30,474	29,795	30,162	30,157	30,278	30,318	30,315
35 to 44 years.....	31,413	30,612	30,713	31,236	30,844	30,772	30,604	30,584	30,514
45 to 54 years.....	33,468	32,986	33,348	33,314	33,221	33,341	33,180	33,104	33,238
55 years and over.....	27,305	27,831	28,305	27,206	27,976	27,993	28,047	28,069	28,200
Men, 16 years and over.....	73,435	74,592	73,959	73,120	73,639	73,375	73,454	73,608	73,581
16 to 19 years.....	2,210	2,377	1,981	2,259	2,162	2,059	2,122	2,087	2,036
16 to 17 years.....	775	808	673	762	679	631	667	667	660
18 to 19 years.....	1,435	1,569	1,308	1,500	1,479	1,434	1,472	1,428	1,372
20 years and over.....	71,225	72,215	71,978	70,861	71,477	71,316	71,332	71,521	71,545
20 to 24 years.....	6,371	6,857	6,536	6,402	6,565	6,473	6,434	6,571	6,536
25 years and over.....	64,854	65,358	65,442	64,466	64,922	64,862	64,937	64,952	65,015
25 to 54 years.....	50,506	50,750	50,641	50,203	50,317	50,264	50,340	50,321	50,303
25 to 34 years.....	16,255	16,689	16,590	16,120	16,272	16,274	16,403	16,478	16,433
35 to 44 years.....	16,863	16,725	16,659	16,758	16,686	16,649	16,644	16,601	16,534
45 to 54 years.....	17,387	17,336	17,392	17,325	17,359	17,341	17,293	17,242	17,336
55 years and over.....	14,348	14,608	14,802	14,263	14,605	14,598	14,597	14,631	14,712
Women, 16 years and over.....	65,644	65,327	65,755	65,648	65,781	65,743	65,506	65,642	65,811
16 to 19 years.....	2,246	2,482	2,103	2,368	2,275	2,227	2,192	2,286	2,225
16 to 17 years.....	807	829	743	807	750	749	678	735	738
18 to 19 years.....	1,439	1,654	1,359	1,570	1,513	1,466	1,512	1,547	1,494
20 years and over.....	63,398	62,845	63,653	63,280	63,505	63,516	63,314	63,356	63,586
20 to 24 years.....	6,145	6,345	6,255	6,222	6,253	6,225	6,236	6,267	6,305
25 years and over.....	57,253	56,500	57,398	57,085	57,282	57,401	57,172	57,122	57,252
25 to 54 years.....	44,295	43,277	43,895	44,142	43,910	44,006	43,722	43,684	43,765
25 to 34 years.....	13,666	13,740	13,884	13,675	13,890	13,882	13,875	13,840	13,883
35 to 44 years.....	14,549	13,887	14,054	14,478	14,158	14,123	13,960	13,983	13,980
45 to 54 years.....	16,081	15,650	15,957	15,989	15,862	16,000	15,887	15,862	15,902
55 years and over.....	12,957	13,223	13,503	12,943	13,371	13,396	13,450	13,438	13,488
MARITAL STATUS									
Married men, spouse present.....	43,762	43,512	43,895	43,656	43,322	43,333	43,369	43,433	43,723
Married women, spouse present.....	34,924	33,721	34,499	34,891	34,238	34,332	34,304	34,213	34,449
Women who maintain families.....	8,866	8,714	8,906	-	-	-	-	-	-
FULL- OR PART-TIME STATUS									
Full-time workers ¹	111,991	113,508	112,385	111,361	112,716	112,646	112,076	111,822	111,716
Part-time workers ²	27,088	26,411	27,330	27,459	26,750	26,755	27,082	27,705	27,636
MULTIPLE JOBHOLDERS									
Total multiple jobholders.....	7,098	6,515	6,681	7,047	7,239	7,002	6,546	6,814	6,684
Percent of total employed.....	5.1	4.7	4.8	5.1	5.2	5.0	4.7	4.9	4.8

1 Employed full-time workers are persons who usually work 35 hours or more per week.

2 Employed part-time workers are persons who usually work less than 35 hours per week.

- Data not available.

NOTE: Detail for the seasonally adjusted data shown in this table will not necessarily add to totals because of the independent seasonal adjustment of the various series. Updated population controls are introduced annually with the release of January data.

HOUSEHOLD DATA

Table A-10. Selected unemployment indicators, seasonally adjusted

Characteristic	Number of unemployed persons (in thousands)			Unemployment rates					
	Sept. 2009	Aug. 2010	Sept. 2010	Sept. 2009	May 2010	June 2010	July 2010	Aug. 2010	Sept. 2010
AGE AND SEX									
Total, 16 years and over.....	15,159	14,860	14,767	9.8	9.7	9.5	9.5	9.6	9.6
16 to 19 years.....	1,637	1,561	1,500	26.1	26.4	25.7	26.1	26.3	26.0
16 to 17 years.....	616	643	607	28.2	29.8	29.2	30.4	31.4	30.3
18 to 19 years.....	991	933	863	24.4	24.6	24.0	23.6	23.9	23.1
20 years and over.....	13,522	13,299	13,267	9.2	9.0	8.9	8.8	9.0	8.9
20 to 24 years.....	2,231	2,249	2,225	15.0	14.7	15.3	15.6	14.9	14.8
25 years and over.....	11,384	11,062	11,061	8.6	8.4	8.2	8.1	8.3	8.3
25 to 54 years.....	9,453	8,782	8,928	9.1	8.7	8.5	8.5	8.5	8.7
25 to 34 years.....	3,516	3,287	3,372	10.6	10.5	10.3	9.9	9.8	10.0
35 to 44 years.....	3,028	2,564	2,788	8.8	8.1	7.8	8.0	7.7	8.4
45 to 54 years.....	2,908	2,931	2,768	8.0	7.7	7.5	7.5	8.1	7.7
55 years and over.....	1,999	2,215	2,186	6.8	7.1	6.9	6.9	7.3	7.2
Men, 16 years and over.....	9,077	8,691	8,606	11.0	10.5	10.5	10.4	10.6	10.5
16 to 19 years.....	961	880	844	29.9	28.1	29.2	29.0	29.7	29.3
16 to 17 years.....	345	328	332	31.1	32.4	32.8	32.5	33.0	33.5
18 to 19 years.....	593	558	488	28.3	26.3	27.4	26.7	28.1	26.2
20 years and over.....	8,116	7,811	7,762	10.3	9.8	9.9	9.7	9.8	9.8
20 to 24 years.....	1,326	1,377	1,344	17.2	16.1	17.8	18.3	17.3	17.1
25 years and over.....	6,890	6,476	6,473	9.7	9.1	9.0	8.8	9.1	9.1
25 to 54 years.....	5,767	5,126	5,203	10.3	9.5	9.4	9.1	9.2	9.4
25 to 34 years.....	2,180	1,919	2,007	11.9	11.4	11.5	10.7	10.4	10.9
35 to 44 years.....	1,790	1,493	1,563	9.7	8.6	8.3	8.3	8.3	8.6
45 to 54 years.....	1,797	1,713	1,633	9.4	8.4	8.6	8.4	9.0	8.6
55 years and over.....	1,124	1,350	1,270	7.3	7.6	7.5	7.7	8.4	7.9
Women, 16 years and over.....	6,081	6,169	6,161	8.5	8.8	8.3	8.5	8.6	8.6
16 to 19 years.....	675	681	656	22.2	24.6	22.3	23.1	22.9	22.8
16 to 17 years.....	271	315	275	25.1	27.4	25.8	28.2	30.0	27.1
18 to 19 years.....	398	374	376	20.2	22.9	20.3	20.5	19.5	20.1
20 years and over.....	5,406	5,488	5,505	7.9	8.1	7.8	7.9	8.0	8.0
20 to 24 years.....	906	872	881	12.7	13.2	12.6	12.7	12.2	12.3
25 years and over.....	4,494	4,586	4,588	7.3	7.6	7.2	7.3	7.4	7.4
25 to 54 years.....	3,686	3,656	3,726	7.7	7.9	7.5	7.7	7.7	7.8
25 to 34 years.....	1,336	1,368	1,365	8.9	9.5	8.9	9.0	9.0	9.0
35 to 44 years.....	1,238	1,071	1,226	7.9	7.4	7.4	7.6	7.1	8.1
45 to 54 years.....	1,111	1,217	1,135	6.5	6.8	6.4	6.5	7.1	6.7
55 years and over ¹	876	977	922	6.3	5.9	6.5	6.9	6.9	6.4
MARITAL STATUS									
Married men, spouse present.....	3,454	3,179	3,206	7.3	6.7	6.8	6.6	6.8	6.8
Married women, spouse present.....	2,130	2,188	2,075	5.8	6.3	5.9	5.8	6.0	5.7
Women who maintain families ¹	1,166	1,346	1,321	11.6	11.6	12.1	13.4	13.4	12.9
FULL- OR PART-TIME STATUS									
Full-time workers ²	13,358	12,845	13,012	10.7	10.4	10.2	10.2	10.3	10.4
Part-time workers ³	1,865	2,005	1,789	6.4	6.7	6.4	6.4	6.7	6.1

1 Not seasonally adjusted.

2 Full-time workers are unemployed persons who have expressed a desire to work full time (35 hours or more per week) or are on layoff from full-time jobs.

3 Part-time workers are unemployed persons who have expressed a desire to work part time (less than 35 hours per week) or are on layoff from part-time jobs.

NOTE: Detail for the seasonally adjusted data shown in this table will not necessarily add to totals because of the independent seasonal adjustment of the various series. Updated population controls are introduced annually with the release of January data.

HOUSEHOLD DATA

Table A-11. Unemployed persons by reason for unemployment

[Numbers in thousands]

Reason	Not seasonally adjusted			Seasonally adjusted					
	Sept. 2009	Aug. 2010	Sept. 2010	Sept. 2009	May 2010	June 2010	July 2010	Aug. 2010	Sept. 2010
NUMBER OF UNEMPLOYED									
Job losers and persons who completed temporary jobs.....	9,170	8,894	8,651	10,236	9,223	9,114	9,125	9,305	9,401
On temporary layoff.....	1,283	1,359	910	1,918	1,478	1,424	1,268	1,480	1,349
Not on temporary layoff.....	7,887	7,535	7,741	8,318	7,746	7,690	7,857	7,825	8,051
Permanent job losers.....	6,474	6,214	6,271	6,858	6,410	6,404	6,518	6,480	6,589
Persons who completed temporary jobs.....	1,413	1,321	1,471	1,429	1,336	1,287	1,339	1,345	1,463
Job leavers.....	955	943	880	869	969	900	900	874	807
Reentrants.....	3,285	3,492	3,428	3,255	3,453	3,308	3,393	3,411	3,436
New entrants.....	1,127	1,430	1,180	1,134	1,206	1,140	1,188	1,259	1,187
PERCENT DISTRIBUTION									
Job losers and persons who completed temporary jobs.....	63.1	60.3	61.2	66.1	62.1	63.0	62.5	62.7	63.4
On temporary layoff.....	8.8	9.2	6.4	12.4	9.9	9.8	8.7	10.0	9.1
Not on temporary layoff.....	54.3	51.1	54.7	53.7	52.2	53.2	53.8	52.7	54.3
Job leavers.....	6.6	6.4	6.2	5.6	6.5	6.2	6.2	5.9	5.4
Reentrants.....	22.6	23.7	24.2	21.0	23.3	22.9	23.2	23.0	23.2
New entrants.....	7.8	9.7	8.3	7.3	8.1	7.9	8.1	8.5	8.0
UNEMPLOYED AS A PERCENT OF THE CIVILIAN LABOR FORCE									
Job losers and persons who completed temporary jobs.....	6.0	5.7	5.6	6.6	6.0	5.9	5.9	6.0	6.1
Job leavers.....	0.6	0.6	0.6	0.6	0.6	0.6	0.6	0.6	0.5
Reentrants.....	2.1	2.3	2.2	2.1	2.2	2.2	2.2	2.2	2.2
New entrants.....	0.7	0.9	0.8	0.7	0.8	0.7	0.8	0.8	0.8

NOTE: Updated population controls are introduced annually with the release of January data.

HOUSEHOLD DATA

Table A-12. Unemployed persons by duration of unemployment

[Numbers in thousands]

Duration	Not seasonally adjusted			Seasonally adjusted					
	Sept. 2009	Aug. 2010	Sept. 2010	Sept. 2009	May 2010	June 2010	July 2010	Aug. 2010	Sept. 2010
NUMBER OF UNEMPLOYED									
Less than 5 weeks.....	2,847	2,632	2,830	2,938	2,752	2,769	2,839	2,760	2,891
5 to 14 weeks.....	3,558	3,939	3,127	3,838	3,019	3,121	3,060	3,635	3,350
15 weeks and over.....	8,133	8,189	8,183	8,405	8,924	8,959	8,722	8,484	8,458
15 to 26 weeks.....	2,671	1,916	2,075	2,958	2,161	2,208	2,151	2,235	2,336
27 weeks and over.....	5,462	6,273	6,108	5,447	6,763	6,751	6,572	6,249	6,123
Average (mean) duration, in weeks.....	27.2	33.1	34.1	26.5	34.4	35.2	34.2	33.6	33.3
Median duration, in weeks.....	18.1	19.6	20.5	17.8	23.2	25.5	22.2	19.9	20.4
PERCENT DISTRIBUTION									
Less than 5 weeks.....	19.6	17.8	20.0	19.4	18.7	18.6	19.4	18.5	19.7
5 to 14 weeks.....	24.5	26.7	22.1	25.3	20.5	21.0	20.9	24.4	22.8
15 weeks and over.....	55.9	55.5	57.9	55.4	60.7	60.3	59.7	57.0	57.5
15 to 26 weeks.....	18.4	13.0	14.7	19.5	14.7	14.9	14.7	15.0	15.9
27 weeks and over.....	37.6	42.5	43.2	35.9	46.0	45.5	44.9	42.0	41.7

NOTE: Updated population controls are introduced annually with the release of January data.

HOUSEHOLD DATA

Table A-13. Employed and unemployed persons by occupation, not seasonally adjusted

[Numbers in thousands]

Occupation	Employed		Unemployed		Unemployment rates	
	Sept. 2009	Sept. 2010	Sept. 2009	Sept. 2010	Sept. 2009	Sept. 2010
Total, 16 years and over ¹	139,079	139,715	14,538	14,140	9.5	9.2
Management, professional, and related occupations.....	52,186	51,757	2,859	2,381	5.2	4.4
Management, business, and financial operations occupations.....	21,772	21,038	1,188	956	5.2	4.3
Professional and related occupations.....	30,414	30,719	1,671	1,425	5.2	4.4
Service occupations.....	24,533	24,660	2,556	2,867	9.4	10.4
Sales and office occupations.....	33,274	33,331	3,367	3,386	9.2	9.2
Sales and related occupations.....	15,519	15,319	1,521	1,584	8.9	9.4
Office and administrative support occupations.....	17,755	18,012	1,846	1,803	9.4	9.1
Natural resources, construction, and maintenance occupations.....	13,264	13,273	2,210	2,195	14.3	14.2
Farming, fishing, and forestry occupations.....	916	1,051	156	142	14.6	11.9
Construction and extraction occupations.....	7,468	7,186	1,605	1,536	17.7	17.6
Installation, maintenance, and repair occupations.....	4,880	5,036	449	517	8.4	9.3
Production, transportation, and material moving occupations.....	15,822	16,693	2,388	2,085	13.1	11.1
Production occupations.....	7,677	8,187	1,264	1,123	14.1	12.1
Transportation and material moving occupations.....	8,145	8,506	1,125	962	12.1	10.2

¹ Persons with no previous work experience and persons whose last job was in the U.S. Armed Forces are included in the unemployed total.

NOTE: Updated population controls are introduced annually with the release of January data.

HOUSEHOLD DATA

Table A-14. Unemployed persons by industry and class of worker, not seasonally adjusted

Industry and class of worker	Number of unemployed persons (in thousands)		Unemployment rates	
	Sept. 2009	Sept. 2010	Sept. 2009	Sept. 2010
Total, 16 years and over ¹	14,538	14,140	9.5	9.2
Nonagricultural private wage and salary workers.....	11,697	11,127	9.9	9.4
Mining, quarrying, and oil and gas extraction.....	76	66	10.7	8.2
Construction.....	1,594	1,464	17.1	17.2
Manufacturing.....	1,876	1,471	11.9	9.6
Durable goods.....	1,280	937	13.1	9.7
Nondurable goods.....	596	534	10.0	9.3
Wholesale and retail trade.....	1,809	1,962	9.0	9.6
Transportation and utilities.....	538	418	9.5	7.1
Information.....	362	330	11.2	10.8
Financial activities.....	657	568	7.1	6.3
Professional and business services.....	1,596	1,426	11.3	9.9
Education and health services.....	1,257	1,352	6.0	6.3
Leisure and hospitality.....	1,469	1,536	11.4	11.4
Other services.....	462	534	7.1	8.5
Agriculture and related private wage and salary workers.....	150	164	11.1	11.1
Government workers.....	928	1,089	4.2	5.0
Self-employed and unpaid family workers.....	636	580	5.9	5.6

¹ Persons with no previous work experience and persons whose last job was in the U.S. Armed Forces are included in the unemployed total.

NOTE: Updated population controls are introduced annually with the release of January data.

HOUSEHOLD DATA

Table A-15. Alternative measures of labor underutilization

[Percent]

Measure	Not seasonally adjusted			Seasonally adjusted					
	Sept. 2009	Aug. 2010	Sept. 2010	Sept. 2009	May 2010	June 2010	July 2010	Aug. 2010	Sept. 2010
U-1 Persons unemployed 15 weeks or longer, as a percent of the civilian labor force.....	5.3	5.3	5.3	5.5	5.8	5.8	5.7	5.5	5.5
U-2 Job losers and persons who completed temporary jobs, as a percent of the civilian labor force.....	6.0	5.7	5.6	6.6	6.0	5.9	5.9	6.0	6.1
U-3 Total unemployed, as a percent of the civilian labor force (official unemployment rate).....	9.5	9.5	9.2	9.8	9.7	9.5	9.5	9.6	9.6
U-4 Total unemployed plus discouraged workers, as a percent of the civilian labor force plus discouraged workers.....	9.9	10.2	9.9	10.3	10.3	10.2	10.2	10.3	10.3
U-5 Total unemployed, plus discouraged workers, plus all other persons marginally attached to the labor force, as a percent of the civilian labor force plus all persons marginally attached to the labor force.....	10.8	10.9	10.7	11.1	11.0	11.0	11.0	11.0	11.0
U-6 Total unemployed, plus all persons marginally attached to the labor force, plus total employed part time for economic reasons, as a percent of the civilian labor force plus all persons marginally attached to the labor force.....	16.1	16.4	16.2	17.0	16.6	16.5	16.5	16.7	17.1

NOTE: Persons marginally attached to the labor force are those who currently are neither working nor looking for work but indicate that they want and are available for a job and have looked for work sometime in the past 12 months. Discouraged workers, a subset of the marginally attached, have given a job-market related reason for not currently looking for work. Persons employed part time for economic reasons are those who want and are available for full-time work but have had to settle for a part-time schedule. Updated population controls are introduced annually with the release of January data.

HOUSEHOLD DATA

Table A-16. Persons not in the labor force and multiple jobholders by sex, not seasonally adjusted

[Numbers in thousands]

Category	Total		Men		Women	
	Sept. 2009	Sept. 2010	Sept. 2009	Sept. 2010	Sept. 2009	Sept. 2010
NOT IN THE LABOR FORCE						
Total not in the labor force.....	82,706	84,468	32,642	33,588	50,064	50,880
Persons who currently want a job.....	5,650	5,949	2,725	2,772	2,925	3,177
Marginally attached to the labor force ¹	2,219	2,548	1,224	1,354	995	1,194
Discouraged workers ²	706	1,209	478	730	228	478
Other persons marginally attached to the labor force ³	1,513	1,340	746	624	768	716
MULTIPLE JOBHOLDERS						
Total multiple jobholders ⁴	7,098	6,681	3,426	3,140	3,672	3,540
Percent of total employed.....	5.1	4.8	4.7	4.2	5.6	5.4
Primary job full time, secondary job part time.....	3,667	3,515	1,872	1,852	1,795	1,663
Primary and secondary jobs both part time.....	1,753	1,717	604	563	1,149	1,154
Primary and secondary jobs both full time.....	246	265	162	164	84	101
Hours vary on primary or secondary job.....	1,382	1,144	769	541	612	603

1 Data refer to persons who want a job, have searched for work during the prior 12 months, and were available to take a job during the reference week, but had not looked for work in the past 4 weeks.

2 Includes those who did not actively look for work in the prior 4 weeks for reasons such as thinks no work available, could not find work, lacks schooling or training, employer thinks too young or old, and other types of discrimination.

3 Includes those who did not actively look for work in the prior 4 weeks for such reasons as school or family responsibilities, ill health, and transportation problems, as well as a number for whom reason for nonparticipation was not determined.

4 Includes a small number of persons who work part time on their primary job and full time on their secondary job(s), not shown separately.

NOTE: Updated population controls are introduced annually with the release of January data.

ESTABLISHMENT DATA

Table B-1. Employees on nonfarm payrolls by industry sector and selected industry detail

[In thousands]

Industry	Not seasonally adjusted				Seasonally adjusted				Change from: Aug. 2010- Sept. 2010 ^P
	Sept. 2009	July 2010	Aug. 2010 ^P	Sept. 2010 ^P	Sept. 2009	July 2010	Aug. 2010 ^P	Sept. 2010 ^P	
Total nonfarm.....	130,243	130,059	130,136	130,564	129,857	130,353	130,296	130,201	-95
Total private.....	107,964	108,751	108,922	108,510	107,377	107,813	107,906	107,970	64
Goods-producing.....	18,495	18,347	18,460	18,351	18,124	18,031	18,041	18,019	-22
Mining and logging.....	688	746	752	756	676	733	740	745	5
Logging.....	52.7	49.2	50.3	49.4	50.1	48.3	48.2	47.4	-0.8
Mining.....	634.9	697.0	702.0	706.9	625.5	684.6	692.1	697.9	5.8
Oil and gas extraction.....	160.8	166.3	167.5	166.8	160.4	165.0	166.3	167.4	1.1
Mining, except oil and gas ¹	213.4	222.3	223.8	223.0	206.8	214.5	216.2	217.0	0.8
Coal mining.....	80.6	82.9	83.9	84.6	80.6	83.2	83.6	84.4	0.8
Support activities for mining.....	260.7	308.4	310.7	317.1	258.3	305.1	309.6	313.5	3.9
Construction.....	6,067	5,864	5,931	5,841	5,814	5,594	5,625	5,604	-21
Construction of buildings.....	1,353.7	1,305.7	1,311.6	1,297.2	1,313.0	1,260.3	1,258.1	1,258.6	0.5
Residential building.....	634.0	596.9	600.7	594.7	609.2	575.1	573.1	572.0	-1.1
Nonresidential building.....	719.7	708.8	710.9	702.5	703.8	685.2	685.0	686.6	1.6
Heavy and civil engineering construction.....	884.2	867.9	893.9	889.1	817.8	809.9	826.5	826.3	-0.2
Specialty trade contractors.....	3,829.1	3,690.0	3,725.4	3,655.1	3,682.9	3,524.1	3,539.9	3,519.0	-20.9
Residential specialty trade contractors.....	1,646.3	1,606.5	1,602.9	1,587.0	1,576.3	1,529.0	1,522.2	1,520.8	-1.4
Nonresidential specialty trade contractors....	2,182.8	2,083.5	2,122.5	2,068.1	2,106.6	1,995.1	2,017.7	1,998.2	-19.5
Manufacturing.....	11,740	11,737	11,777	11,754	11,634	11,704	11,676	11,670	-6
Durable goods.....	7,156	7,201	7,221	7,214	7,112	7,201	7,176	7,176	0
Wood products.....	358.1	356.8	356.0	350.7	349.2	349.2	346.0	344.3	-1.7
Nonmetallic mineral products.....	399.7	393.2	393.6	393.6	389.5	383.3	382.7	384.4	1.7
Primary metals.....	353.8	372.3	375.4	376.2	351.3	374.0	374.8	375.0	0.2
Fabricated metal products.....	1,283.6	1,314.8	1,326.1	1,328.2	1,276.9	1,316.1	1,316.5	1,319.2	2.7
Machinery.....	993.7	1,002.3	1,002.3	998.3	993.8	1,000.5	998.4	996.5	-1.9
Computer and electronic products ¹	1,107.3	1,103.9	1,104.3	1,102.5	1,107.5	1,100.4	1,101.8	1,103.6	1.8
Computer and peripheral equipment.....	160.7	160.1	161.1	161.7	160.8	160.1	160.8	160.9	0.1
Communication equipment.....	119.9	121.5	122.9	123.0	120.4	121.4	122.9	123.5	0.6
Semiconductors and electronic components.....	363.4	368.1	370.8	369.8	363.3	368.0	369.7	370.0	0.3
Electronic instruments.....	415.1	407.9	404.6	403.8	414.9	405.0	403.4	404.7	1.3
Electrical equipment and appliances.....	370.0	374.6	374.6	375.3	369.0	372.4	372.8	374.4	1.6
Transportation equipment ¹	1,338.0	1,343.2	1,350.6	1,354.6	1,328.0	1,371.2	1,349.6	1,346.5	-3.1
Motor vehicles and parts ²	663.7	674.6	683.0	690.7	653.9	704.6	682.4	683.0	0.6
Furniture and related products.....	371.2	364.4	362.9	358.5	368.5	358.6	358.4	356.9	-1.5
Miscellaneous manufacturing.....	580.6	575.3	575.0	575.6	578.2	575.1	574.6	575.6	1.0
Nondurable goods.....	4,584	4,536	4,556	4,540	4,522	4,503	4,500	4,494	-6
Food manufacturing.....	1,501.1	1,482.5	1,498.1	1,491.4	1,463.6	1,461.9	1,461.1	1,459.5	-1.6
Beverages and tobacco products.....	193.0	184.7	185.7	188.1	187.2	180.6	181.5	182.9	1.4
Textile mills.....	122.6	123.3	123.1	122.6	120.9	123.9	122.4	121.9	-0.5
Textile product mills.....	125.6	122.9	121.3	122.1	124.9	123.2	122.0	122.2	0.2
Apparel.....	168.9	163.4	166.8	165.8	165.2	163.8	164.0	163.1	-0.9
Leather and allied products.....	29.2	28.0	29.7	29.6	28.6	28.4	29.3	29.0	-0.3
Paper and paper products.....	402.9	400.2	399.3	397.3	402.2	397.4	397.6	397.0	-0.6
Printing and related support activities.....	513.3	494.3	493.6	493.5	510.6	495.6	493.1	491.6	-1.5
Petroleum and coal products.....	118.4	117.7	117.0	115.7	115.6	113.5	113.1	112.8	-0.3
Chemicals.....	790.5	782.3	780.1	776.7	791.3	778.7	778.9	778.7	-0.2
Plastics and rubber products.....	618.1	636.4	641.3	637.0	611.7	636.4	637.0	634.8	-2.2
Private service-providing.....	89,469	90,404	90,462	90,159	89,253	89,782	89,865	89,951	86
Trade, transportation, and utilities.....	24,740	24,778	24,791	24,746	24,754	24,771	24,769	24,785	16
Wholesale trade.....	5,588.0	5,619.1	5,613.5	5,603.2	5,579.9	5,587.1	5,586.6	5,588.8	2.2
Durable goods.....	2,794.0	2,791.9	2,790.5	2,787.8	2,792.1	2,776.6	2,776.2	2,781.2	5.0
Nondurable goods.....	1,976.0	1,986.5	1,981.1	1,974.2	1,969.9	1,972.6	1,972.0	1,969.4	-2.6
Electronic markets and agents and brokers...	818.0	840.7	841.9	841.2	817.9	837.9	838.4	838.2	-0.2
Retail trade.....	14,369.7	14,442.6	14,463.0	14,354.0	14,428.7	14,442.4	14,440.4	14,446.1	5.7
Motor vehicle and parts dealers ¹	1,640.0	1,645.3	1,654.9	1,654.3	1,621.2	1,628.2	1,634.8	1,638.4	3.6
Automobile dealers.....	1,018.0	1,020.8	1,027.3	1,028.7	1,007.3	1,015.2	1,018.2	1,019.9	1.7

See footnotes at end of table.

ESTABLISHMENT DATA

Table B-1. Employees on nonfarm payrolls by industry sector and selected industry detail

— Continued

[In thousands]

Industry	Not seasonally adjusted				Seasonally adjusted				Change from: Aug. 2010-Sept. 2010 ^P
	Sept. 2009	July 2010	Aug. 2010 ^P	Sept. 2010 ^P	Sept. 2009	July 2010	Aug. 2010 ^P	Sept. 2010 ^P	
Retail trade - Continued									
Furniture and home furnishings stores.....	436.8	434.2	432.5	434.3	439.6	439.9	437.9	440.1	2.2
Electronics and appliance stores.....	477.4	472.3	475.5	478.2	481.5	480.2	481.8	484.1	2.3
Building material and garden supply stores...	1,144.6	1,172.2	1,154.1	1,132.8	1,146.3	1,144.4	1,144.5	1,142.9	-1.6
Food and beverage stores.....	2,817.1	2,821.6	2,822.4	2,801.7	2,825.4	2,805.6	2,808.6	2,810.0	1.4
Health and personal care stores.....	974.0	973.8	970.7	962.8	977.5	972.7	971.1	969.5	-1.6
Gasoline stations.....	831.9	838.2	836.5	830.7	827.1	824.3	822.8	824.3	1.5
Clothing and clothing accessories stores....	1,338.3	1,388.8	1,400.7	1,369.7	1,354.3	1,391.8	1,391.2	1,393.7	2.5
Sporting goods, hobby, book, and music stores.....	623.1	586.7	603.3	601.6	620.3	609.0	607.6	604.3	-3.3
General merchandise stores ¹	2,893.1	2,927.0	2,929.1	2,901.4	2,944.3	2,954.9	2,951.8	2,953.1	1.3
Department stores.....	1,434.5	1,462.6	1,471.1	1,452.1	1,467.7	1,492.9	1,492.8	1,490.7	-2.1
Miscellaneous store retailers.....	775.7	773.5	772.3	765.3	772.6	769.4	767.3	764.9	-2.4
Nonstore retailers.....	417.7	409.0	411.0	421.2	418.6	422.0	421.0	420.8	-0.2
Transportation and warehousing.....	4,223.7	4,159.7	4,158.6	4,238.8	4,184.4	4,188.9	4,189.5	4,199.1	9.6
Air transportation.....	457.3	456.1	457.6	458.1	456.8	453.6	454.4	456.6	2.2
Rail transportation.....	216.1	220.9	220.2	220.1	215.7	219.6	220.0	219.3	-0.7
Water transportation.....	64.8	66.5	66.5	65.4	62.7	63.7	63.7	63.8	0.1
Truck transportation.....	1,271.8	1,259.2	1,266.4	1,265.0	1,249.6	1,240.8	1,242.5	1,242.4	-0.1
Transit and ground passenger transportation.....	423.9	372.8	359.5	436.4	416.2	431.2	424.9	427.1	2.2
Pipeline transportation.....	42.1	39.2	39.5	38.9	42.2	38.9	39.3	38.7	-0.6
Scenic and sightseeing transportation.....	33.2	37.1	36.5	33.9	28.0	28.4	28.4	28.5	0.1
Support activities for transportation.....	541.5	550.5	550.6	550.0	540.5	548.4	548.5	549.1	0.6
Couriers and messengers.....	533.5	514.9	517.5	522.5	537.1	520.7	523.3	527.2	3.9
Warehousing and storage.....	639.5	642.5	644.3	648.5	635.6	643.6	644.5	646.4	1.9
Utilities.....	559.0	556.1	555.7	549.6	560.6	552.9	552.6	550.6	-2.0
Information.....	2,767	2,726	2,722	2,702	2,777	2,717	2,716	2,711	-5
Publishing industries, except Internet.....	779.0	762.7	763.3	760.8	779.8	761.3	761.9	762.0	0.1
Motion picture and sound recording industries.....	344.9	362.0	357.9	346.2	349.6	351.5	352.3	351.3	-1.0
Broadcasting, except Internet.....	296.8	295.3	296.7	298.0	296.2	296.4	297.4	298.3	0.9
Telecommunications.....	963.4	919.6	920.0	913.5	966.7	921.0	919.4	914.2	-5.2
Data processing, hosting and related services.....	249.6	245.2	242.2	242.1	250.1	245.5	244.0	243.8	-0.2
Other information services.....	132.9	141.3	141.7	141.3	134.3	140.8	141.2	141.7	0.5
Financial activities.....	7,688	7,640	7,627	7,586	7,683	7,581	7,578	7,577	-1
Finance and insurance.....	5,698.6	5,663.6	5,654.2	5,634.7	5,707.5	5,645.6	5,643.4	5,640.5	-2.9
Monetary authorities - central bank.....	21.0	21.4	21.4	21.4	21.1	21.2	21.2	21.3	0.1
Credit intermediation and related activities ¹	2,566.5	2,573.2	2,569.1	2,563.5	2,571.3	2,562.3	2,563.7	2,566.8	3.1
Depository credit intermediation ¹	1,745.3	1,763.4	1,764.1	1,758.0	1,749.3	1,755.6	1,757.4	1,760.6	3.2
Commercial banking.....	1,306.3	1,321.4	1,322.0	1,318.4	1,309.5	1,315.7	1,317.7	1,319.7	2.0
Securities, commodity contracts, investments.....	794.5	801.4	797.3	793.8	796.3	798.0	796.4	796.2	-0.2
Insurance carriers and related activities.....	2,229.6	2,181.8	2,181.2	2,171.2	2,231.9	2,178.6	2,177.1	2,171.4	-5.7
Funds, trusts, and other financial vehicles. ..	87.0	85.8	85.2	84.8	86.9	85.5	85.0	84.8	-0.2
Real estate and rental and leasing.....	1,989.8	1,976.2	1,972.4	1,951.4	1,975.8	1,935.0	1,934.8	1,936.1	1.3
Real estate.....	1,414.8	1,396.6	1,397.2	1,387.4	1,407.5	1,375.9	1,377.0	1,379.6	2.6
Rental and leasing services.....	549.1	555.4	551.0	540.0	542.5	535.2	534.0	532.7	-1.3
Lessors of nonfinancial intangible assets.....	25.9	24.2	24.2	24.0	25.8	23.9	23.8	23.8	0.0
Professional and business services.....	16,497	16,796	16,872	16,843	16,349	16,692	16,720	16,734	14
Professional and technical services ¹	7,366.9	7,386.8	7,393.0	7,344.2	7,444.6	7,416.0	7,430.1	7,423.2	-6.9
Legal services.....	1,106.4	1,115.8	1,107.6	1,103.1	1,113.5	1,102.9	1,104.3	1,106.8	2.5
Accounting and bookkeeping services.....	842.2	816.5	823.7	812.2	916.6	893.1	896.5	888.9	-7.6
Architectural and engineering services.....	1,306.7	1,293.1	1,296.4	1,283.2	1,299.9	1,278.3	1,279.6	1,279.0	-0.6
Computer systems design and related services.....	1,421.5	1,459.1	1,466.4	1,457.6	1,425.5	1,454.8	1,459.6	1,458.7	-0.9
Management and technical consulting services.....	987.4	993.1	993.2	997.7	987.5	988.9	991.5	998.4	6.9

See footnotes at end of table.

ESTABLISHMENT DATA

Table B-1. Employees on nonfarm payrolls by industry sector and selected industry detail

— Continued

[In thousands]

Industry	Not seasonally adjusted				Seasonally adjusted				Change from: Aug. 2010-Sept. 2010 ^P
	Sept. 2009	July 2010	Aug. 2010 ^P	Sept. 2010 ^P	Sept. 2009	July 2010	Aug. 2010 ^P	Sept. 2010 ^P	
Professional and business services - Continued									
Management of companies and enterprises.	1,834.8	1,836.8	1,837.9	1,831.9	1,837.4	1,828.0	1,829.2	1,834.4	5.2
Administrative and waste services.	7,295.2	7,572.4	7,640.9	7,666.8	7,066.6	7,447.7	7,460.5	7,476.0	15.5
Administrative and support services ¹	6,940.6	7,206.4	7,275.5	7,306.4	6,714.2	7,090.0	7,103.0	7,119.1	16.1
Employment services ¹	2,524.6	2,775.1	2,836.5	2,908.6	2,375.0	2,769.6	2,774.8	2,803.0	28.2
Temporary help services.	1,852.7	2,088.1	2,153.2	2,213.4	1,724.4	2,094.0	2,111.7	2,128.6	16.9
Business support services.	802.4	784.7	788.4	784.5	810.8	797.2	797.3	793.1	-4.2
Services to buildings and dwellings.	1,800.8	1,847.6	1,838.1	1,800.5	1,730.4	1,731.5	1,732.2	1,730.2	-2.0
Waste management and remediation services.	354.6	366.0	365.4	360.4	352.4	357.7	357.5	356.9	-0.6
Education and health services.	19,155	19,253	19,279	19,541	19,247	19,558	19,594	19,611	17
Educational services.	3,017.5	2,865.4	2,846.2	3,082.7	3,080.4	3,144.8	3,145.2	3,130.1	-15.1
Health care and social assistance.	16,137.6	16,387.2	16,432.4	16,458.1	16,166.3	16,413.0	16,449.2	16,481.2	32.0
Health care ³	13,567.7	13,809.9	13,837.0	13,811.7	13,581.8	13,772.3	13,802.9	13,826.8	23.9
Ambulatory health care services ¹	5,799.4	5,943.1	5,955.1	5,951.9	5,804.9	5,930.1	5,947.2	5,964.4	17.2
Offices of physicians.	2,287.1	2,319.3	2,325.5	2,320.3	2,287.9	2,317.7	2,323.0	2,326.4	3.4
Outpatient care centers.	541.4	554.8	558.2	558.6	544.6	554.1	557.1	558.9	1.8
Home health care services.	1,034.5	1,073.6	1,073.2	1,075.6	1,035.1	1,070.8	1,073.4	1,078.2	4.8
Hospitals.	4,678.5	4,728.4	4,733.9	4,721.4	4,680.8	4,712.7	4,719.7	4,722.6	2.9
Nursing and residential care facilities ¹	3,089.8	3,138.4	3,148.0	3,138.4	3,096.1	3,129.5	3,136.0	3,139.8	3.8
Nursing care facilities.	1,650.0	1,662.5	1,666.8	1,663.9	1,650.8	1,658.9	1,660.3	1,662.2	1.9
Social assistance ¹	2,569.9	2,577.3	2,595.4	2,646.4	2,584.5	2,640.7	2,646.3	2,654.4	8.1
Child day care services.	856.3	794.7	813.4	863.0	857.4	861.5	862.4	863.8	1.4
Leisure and hospitality.	13,284	13,783	13,765	13,383	13,099	13,111	13,131	13,169	38
Arts, entertainment, and recreation.	1,991.9	2,220.8	2,175.5	2,004.0	1,938.7	1,913.0	1,914.1	1,925.4	11.3
Performing arts and spectator sports.	412.5	449.9	448.0	448.8	401.3	415.5	418.7	424.8	6.1
Museums, historical sites, zoos, and parks.	132.4	145.1	140.4	131.2	130.5	129.6	129.0	129.0	0.0
Amusements, gambling, and recreation.	1,447.0	1,625.8	1,587.1	1,424.0	1,406.9	1,367.9	1,366.4	1,371.6	5.2
Accommodation and food services.	11,292.1	11,561.8	11,589.1	11,378.9	11,160.4	11,198.2	11,217.1	11,243.7	26.6
Accommodation.	1,791.3	1,904.8	1,910.7	1,804.9	1,748.4	1,768.6	1,775.7	1,768.4	-7.3
Food services and drinking places.	9,500.8	9,657.0	9,678.4	9,574.0	9,412.0	9,429.6	9,441.4	9,475.3	33.9
Other services.	5,338	5,428	5,406	5,358	5,344	5,352	5,357	5,364	7
Repair and maintenance.	1,147.2	1,156.4	1,158.9	1,156.1	1,141.2	1,147.7	1,151.1	1,153.1	2.0
Personal and laundry services.	1,278.1	1,278.1	1,271.6	1,267.2	1,274.5	1,268.4	1,265.8	1,267.6	1.8
Membership associations and organizations.	2,913.1	2,993.6	2,975.3	2,934.6	2,927.8	2,935.6	2,940.0	2,942.8	2.8
Government.	22,279	21,308	21,214	22,054	22,480	22,540	22,390	22,231	-159
Federal.	2,821.0	3,065.0	2,940.0	2,854.0	2,818.0	3,030.0	2,919.0	2,843.0	-76.0
Federal, except U.S. Postal Service.	2,133.4	2,407.1	2,291.3	2,207.5	2,127.3	2,378.4	2,268.5	2,195.0	-73.5
U.S. Postal Service.	687.6	658.2	648.2	646.5	690.5	651.5	650.4	648.1	-2.3
State government.	5,173.0	4,883.0	4,880.0	5,148.0	5,173.0	5,175.0	5,147.0	5,140.0	-7.0
State government education.	2,367.5	2,100.0	2,103.1	2,392.1	2,365.5	2,415.2	2,393.5	2,385.7	-7.8
State government, excluding education.	2,805.4	2,782.7	2,776.6	2,755.5	2,807.0	2,759.8	2,753.8	2,754.1	0.3
Local government.	14,285.0	13,360.0	13,394.0	14,052.0	14,489.0	14,335.0	14,324.0	14,248.0	-76.0
Local government education.	7,809.3	6,768.7	6,842.0	7,707.8	8,013.0	7,972.7	7,954.6	7,904.8	-49.8
Local government, excluding education.	6,475.4	6,590.8	6,552.3	6,343.8	6,476.1	6,362.6	6,369.8	6,343.5	-26.3

1 Includes other industries, not shown separately.

2 Includes motor vehicles, motor vehicle bodies and trailers, and motor vehicle parts.

3 Includes ambulatory health care services, hospitals, and nursing and residential care facilities.

p Preliminary

ESTABLISHMENT DATA

Table B-2. Average weekly hours and overtime of all employees on private nonfarm payrolls by industry sector, seasonally adjusted

Industry	Sept. 2009	July 2010	Aug. 2010 ^p	Sept. 2010 ^p
AVERAGE WEEKLY HOURS				
Total private.....	33.8	34.2	34.2	34.2
Goods-producing.....	38.5	39.4	39.5	39.4
Mining and logging.....	41.8	43.4	43.7	43.6
Construction.....	37.0	37.5	37.6	37.4
Manufacturing.....	39.0	40.1	40.2	40.1
Durable goods.....	39.1	40.5	40.4	40.4
Nondurable goods.....	38.9	39.5	39.8	39.7
Private service-providing.....	32.8	33.1	33.1	33.1
Trade, transportation, and utilities.....	34.1	34.3	34.2	34.2
Wholesale trade.....	37.7	38.3	38.4	38.5
Retail trade.....	31.4	31.2	31.1	31.1
Transportation and warehousing.....	38.0	38.6	38.5	38.4
Utilities.....	40.6	41.1	41.3	41.3
Information.....	36.6	36.7	36.6	36.7
Financial activities.....	36.6	37.0	37.0	37.0
Professional and business services.....	34.9	35.4	35.4	35.4
Education and health services.....	32.8	32.9	32.9	32.9
Leisure and hospitality.....	25.5	25.8	25.8	25.8
Other services.....	31.4	31.9	32.0	32.0
AVERAGE OVERTIME HOURS				
Manufacturing.....	2.4	2.9	3.0	3.0
Durable goods.....	2.2	2.9	2.9	2.9
Nondurable goods.....	2.7	3.0	3.1	3.1

p Preliminary

ESTABLISHMENT DATA

Table B-3. Average hourly and weekly earnings of all employees on private nonfarm payrolls by industry sector, seasonally adjusted

Industry	Average hourly earnings				Average weekly earnings			
	Sept. 2009	July 2010	Aug. 2010 ^p	Sept. 2010 ^p	Sept. 2009	July 2010	Aug. 2010 ^p	Sept. 2010 ^p
Total private.....	\$22.30	\$22.59	\$22.66	\$22.67	\$ 753.74	\$ 772.58	\$ 774.97	\$ 775.31
Goods-producing.....	23.88	24.03	24.13	24.13	919.38	946.78	953.14	950.72
Mining and logging.....	27.41	27.43	27.67	27.94	1,145.74	1,190.46	1,209.18	1,218.18
Construction.....	24.94	25.20	25.23	25.22	922.78	945.00	948.65	943.23
Manufacturing.....	23.16	23.28	23.39	23.38	903.24	933.53	940.28	937.54
Durable goods.....	24.71	24.72	24.86	24.85	966.16	1,001.16	1,004.34	1,003.94
Nondurable goods.....	20.72	20.92	21.01	20.99	806.01	826.34	836.20	833.30
Private service-providing.....	21.93	22.25	22.30	22.32	719.30	736.48	738.13	738.79
Trade, transportation, and utilities.....	19.44	19.76	19.82	19.85	662.90	677.77	677.84	678.87
Wholesale trade.....	25.73	26.24	26.33	26.39	970.02	1,004.99	1,011.07	1,016.02
Retail trade.....	15.47	15.58	15.60	15.58	485.76	486.10	485.16	484.54
Transportation and warehousing.....	20.50	20.99	21.04	21.18	779.00	810.21	810.04	813.31
Utilities.....	32.88	32.84	33.08	33.02	1,334.93	1,349.72	1,366.20	1,363.73
Information.....	29.58	30.50	30.80	31.05	1,082.63	1,119.35	1,127.28	1,139.54
Financial activities.....	26.58	27.20	27.21	27.19	972.83	1,006.40	1,006.77	1,006.03
Professional and business services.....	27.18	27.31	27.36	27.40	948.58	966.77	968.54	969.96
Education and health services.....	22.46	22.90	22.97	22.95	736.69	753.41	755.71	755.06
Leisure and hospitality.....	13.05	13.06	13.08	13.07	332.78	336.95	337.46	337.21
Other services.....	19.82	19.86	19.86	19.92	622.35	633.53	635.52	637.44

p Preliminary

ESTABLISHMENT DATA

Table B-4. Indexes of aggregate weekly hours and payrolls for all employees on private nonfarm payrolls by industry sector, seasonally adjusted

[2007=100]

Industry	Index of aggregate weekly hours ¹					Index of aggregate weekly payrolls ²				
	Sept. 2009	July 2010	Aug. 2010 ^P	Sept. 2010 ^P	Percent change from: Aug. 2010 - Sept. 2010 ^P	Sept. 2009	July 2010	Aug. 2010 ^P	Sept. 2010 ^P	Percent change from: Aug. 2010 - Sept. 2010 ^P
Total private.....	90.9	92.4	92.5	92.5	0.0	96.7	99.5	99.9	100.0	0.1
Goods-producing.....	79.5	80.9	81.2	80.9	-0.4	85.8	87.9	88.5	88.2	-0.3
Mining and logging.....	88.8	100.0	101.6	102.1	0.5	97.7	110.1	112.9	114.5	1.4
Construction.....	74.1	72.3	72.9	72.2	-1.0	80.3	79.2	79.9	79.2	-0.9
Manufacturing.....	81.6	84.4	84.4	84.2	-0.2	87.9	91.4	91.8	91.5	-0.3
Durable goods.....	78.3	82.1	81.6	81.6	0.0	85.9	90.1	90.1	90.1	0.0
Nondurable goods.....	87.8	88.8	89.4	89.1	-0.3	92.3	94.2	95.3	94.8	-0.5
Private service-providing.....	94.0	95.4	95.5	95.6	0.1	99.9	102.9	103.2	103.4	0.2
Trade, transportation, and utilities.....	91.7	92.3	92.1	92.1	0.0	96.0	98.2	98.2	98.4	0.2
Wholesale trade.....	91.8	93.4	93.6	93.9	0.3	98.6	102.2	102.9	103.4	0.5
Retail trade.....	92.0	91.5	91.2	91.2	0.0	94.1	94.3	94.1	94.0	-0.1
Transportation and warehousing.....	91.0	92.5	92.3	92.3	0.0	94.7	98.6	98.6	99.2	0.6
Utilities.....	98.5	98.3	98.7	98.4	-0.3	107.0	106.7	107.9	107.3	-0.6
Information.....	92.8	91.1	90.8	90.9	0.1	97.8	98.9	99.6	100.5	0.9
Financial activities.....	92.7	92.4	92.4	92.4	0.0	96.1	98.1	98.1	98.0	-0.1
Professional and business services.....	89.7	92.9	93.1	93.2	0.1	98.8	102.8	103.2	103.4	0.2
Education and health services.....	102.7	104.7	104.9	105.0	0.1	108.1	112.4	112.9	112.9	0.0
Leisure and hospitality.....	95.3	96.5	96.7	96.9	0.2	100.3	101.7	102.0	102.2	0.2
Other services.....	93.0	94.6	95.0	95.1	0.1	104.6	106.6	107.1	107.5	0.4

1 The indexes of aggregate weekly hours are calculated by dividing the current month's estimates of aggregate hours by the corresponding 2007 annual average aggregate hours. Aggregate hours estimates are the product of estimates of average weekly hours and employment.

2 The indexes of aggregate weekly payrolls are calculated by dividing the current month's estimates of aggregate weekly payrolls by the corresponding 2007 annual average aggregate weekly payrolls. Aggregate payrolls estimates are the product of estimates of average hourly earnings, average weekly hours, and employment.

p Preliminary

ESTABLISHMENT DATA
Table B-5. Employment of women on nonfarm payrolls by industry sector, seasonally adjusted

Industry	Women employees (in thousands)				Percent of all employees			
	Sept. 2009	July 2010	Aug. 2010 ^p	Sept. 2010 ^p	Sept. 2009	July 2010	Aug. 2010 ^p	Sept. 2010 ^p
Total nonfarm.....	64,838	64,749	64,683	64,619	49.9	49.7	49.6	49.6
Total private.....	52,006	51,914	51,945	51,981	48.4	48.2	48.1	48.1
Goods-producing.....	4,212	4,149	4,143	4,132	23.2	23.0	23.0	22.9
Mining and logging.....	98	101	103	104	14.5	13.8	13.9	14.0
Construction.....	784	734	733	728	13.5	13.1	13.0	13.0
Manufacturing.....	3,330	3,314	3,307	3,300	28.6	28.3	28.3	28.3
Durable goods.....	1,767	1,755	1,751	1,747	24.8	24.4	24.4	24.3
Nondurable goods.....	1,563	1,559	1,556	1,553	34.6	34.6	34.6	34.6
Private service-providing.....	47,794	47,765	47,802	47,849	53.5	53.2	53.2	53.2
Trade, transportation, and utilities.....	10,138	10,039	10,025	10,020	41.0	40.5	40.5	40.4
Wholesale trade.....	1,694.3	1,676.3	1,677.2	1,677.0	30.4	30.0	30.0	30.0
Retail trade.....	7,297.8	7,227.0	7,213.0	7,211.3	50.6	50.0	50.0	49.9
Transportation and warehousing.....	1,004.4	1,002.0	1,001.3	999.2	24.0	23.9	23.9	23.8
Utilities.....	141.6	134.1	133.3	132.1	25.3	24.3	24.1	24.0
Information.....	1,156	1,107	1,108	1,102	41.6	40.7	40.8	40.6
Financial activities.....	4,562	4,462	4,457	4,450	59.4	58.9	58.8	58.7
Professional and business services.....	7,373	7,412	7,417	7,450	45.1	44.4	44.4	44.5
Education and health services.....	14,897	15,081	15,110	15,123	77.4	77.1	77.1	77.1
Leisure and hospitality.....	6,858	6,849	6,865	6,877	52.4	52.2	52.3	52.2
Other services.....	2,810	2,815	2,820	2,827	52.6	52.6	52.6	52.7
Government.....	12,832	12,835	12,738	12,638	57.1	56.9	56.9	56.8

p Preliminary

ESTABLISHMENT DATA

Table B-6. Employment of production and nonsupervisory employees on private nonfarm payrolls by industry sector, seasonally adjusted¹

[In thousands]

Industry	Sept. 2009	July 2010	Aug. 2010 ^p	Sept. 2010 ^p
Total private.....	88,418	88,854	88,914	88,958
Goods-producing.....	13,041	12,972	12,975	12,969
Mining and logging.....	491	549	553	555
Construction.....	4,384	4,209	4,235	4,240
Manufacturing.....	8,166	8,214	8,187	8,174
Durable goods.....	4,865	4,938	4,912	4,908
Nondurable goods.....	3,301	3,276	3,275	3,266
Private service-providing.....	75,377	75,882	75,939	75,989
Trade, transportation, and utilities.....	20,952	20,985	20,962	20,964
Wholesale trade.....	4,492.9	4,483.2	4,479.2	4,478.3
Retail trade.....	12,371.6	12,428.2	12,423.8	12,431.0
Transportation and warehousing.....	3,639.2	3,635.2	3,620.7	3,619.6
Utilities.....	448.4	438.0	438.0	435.5
Information.....	2,217	2,183	2,183	2,180
Financial activities.....	5,939	5,849	5,843	5,841
Professional and business services.....	13,324	13,688	13,707	13,723
Education and health services.....	16,893	17,143	17,180	17,181
Leisure and hospitality.....	11,584	11,557	11,581	11,615
Other services.....	4,468	4,477	4,483	4,485

¹ Data relate to production employees in mining and logging and manufacturing, construction employees in construction, and nonsupervisory employees in the service-providing industries. These groups account for approximately four-fifths of the total employment on private nonfarm payrolls.

^p Preliminary

ESTABLISHMENT DATA

Table B-7. Average weekly hours and overtime of production and nonsupervisory employees on private nonfarm payrolls by industry sector, seasonally adjusted¹

Industry	Sept. 2009	July 2010	Aug. 2010 ^p	Sept. 2010 ^p
AVERAGE WEEKLY HOURS				
Total private.....	33.1	33.4	33.5	33.5
Goods-producing.....	39.2	40.3	40.5	40.7
Mining and logging.....	43.1	44.8	45.5	44.6
Construction.....	37.4	38.2	38.6	39.1
Manufacturing.....	39.9	41.1	41.2	41.2
Durable goods.....	40.0	41.4	41.4	41.4
Nondurable goods.....	39.9	40.7	40.9	41.0
Private service-providing.....	32.0	32.3	32.3	32.2
Trade, transportation, and utilities.....	32.8	33.5	33.4	33.4
Wholesale trade.....	37.4	38.0	38.1	38.2
Retail trade.....	29.8	30.4	30.2	30.1
Transportation and warehousing.....	36.4	37.5	37.6	37.6
Utilities.....	41.5	42.2	42.2	42.0
Information.....	36.4	36.3	36.4	36.1
Financial activities.....	36.0	36.1	36.4	36.1
Professional and business services.....	34.7	35.1	35.1	35.1
Education and health services.....	32.2	32.1	32.2	32.2
Leisure and hospitality.....	24.8	24.8	24.8	24.7
Other services.....	30.5	30.9	30.9	31.0
AVERAGE OVERTIME HOURS				
Manufacturing.....	3.0	3.8	3.8	3.9
Durable goods.....	2.8	3.9	3.8	3.9
Nondurable goods.....	3.2	3.7	3.9	3.9

¹ Data relate to production employees in mining and logging and manufacturing, construction employees in construction, and nonsupervisory employees in the service-providing industries. These groups account for approximately four-fifths of the total employment on private nonfarm payrolls.

^p Preliminary

ESTABLISHMENT DATA

Table B-8. Average hourly and weekly earnings of production and nonsupervisory employees on private nonfarm payrolls by industry sector, seasonally adjusted¹

Industry	Average hourly earnings				Average weekly earnings			
	Sept. 2009	July 2010	Aug. 2010 ^p	Sept. 2010 ^p	Sept. 2009	July 2010	Aug. 2010 ^p	Sept. 2010 ^p
Total private.....	\$18.71	\$19.04	\$19.09	\$19.10	\$ 619.30	\$ 635.94	\$ 639.52	\$ 639.85
Goods-producing.....	19.92	20.25	20.31	20.32	780.86	816.08	822.56	827.02
Mining and logging.....	23.29	23.98	23.96	24.29	1,003.80	1,074.30	1,090.18	1,083.33
Construction.....	22.54	23.21	23.28	23.17	843.00	886.62	898.61	905.95
Manufacturing.....	18.39	18.57	18.59	18.63	733.76	763.23	765.91	767.56
Durable goods.....	19.53	19.71	19.73	19.79	781.20	815.99	816.82	819.31
Nondurable goods.....	16.70	16.82	16.87	16.86	666.33	684.57	689.98	691.26
Private service-providing.....	18.46	18.79	18.83	18.83	590.72	606.92	608.21	606.33
Trade, transportation, and utilities.....	16.56	16.85	16.89	16.94	543.17	564.48	564.13	565.80
Wholesale trade.....	21.03	21.56	21.56	21.68	786.52	819.28	821.44	828.18
Retail trade.....	13.07	13.24	13.25	13.27	389.49	402.50	400.15	399.43
Transportation and warehousing.....	18.77	19.15	19.21	19.24	683.23	718.13	722.30	723.42
Utilities.....	29.64	30.42	30.53	30.60	1,230.06	1,283.72	1,288.37	1,285.20
Information.....	25.54	26.03	25.91	26.01	929.66	944.89	943.12	938.96
Financial activities.....	20.94	21.45	21.47	21.38	753.84	774.35	781.51	771.82
Professional and business services.....	22.53	22.85	22.93	22.96	781.79	802.04	804.84	805.90
Education and health services.....	19.61	20.02	20.07	20.08	631.44	642.64	646.25	646.58
Leisure and hospitality.....	11.24	11.31	11.33	11.23	278.75	280.49	280.98	277.38
Other services.....	16.71	16.84	16.86	16.88	509.66	520.36	520.97	523.28

¹ Data relate to production employees in mining and logging and manufacturing, construction employees in construction, and nonsupervisory employees in the service-providing industries. These groups account for approximately four-fifths of the total employment on private nonfarm payrolls.

p Preliminary

ESTABLISHMENT DATA

Table B-9. Indexes of aggregate weekly hours and payrolls for production and nonsupervisory employees on private nonfarm payrolls by industry sector, seasonally adjusted¹

[2002=100]

Industry	Index of aggregate weekly hours ²					Index of aggregate weekly payrolls ³				
	Sept. 2009	July 2010	Aug. 2010 ^p	Sept. 2010 ^p	Percent change from: Aug. 2010 - Sept. 2010 ^p	Sept. 2009	July 2010	Aug. 2010 ^p	Sept. 2010 ^p	Percent change from: Aug. 2010 - Sept. 2010 ^p
Total private.....	97.8	99.2	99.5	99.6	0.1	122.2	126.1	126.9	127.1	0.2
Goods-producing.....	78.1	79.9	80.3	80.7	0.5	95.3	99.1	99.9	100.4	0.5
Mining and logging.....	112.5	130.7	133.7	131.5	-1.6	152.3	182.3	186.3	185.8	-0.3
Construction.....	82.1	80.5	81.8	83.0	1.5	99.9	100.9	102.9	103.9	1.0
Manufacturing.....	74.8	77.5	77.4	77.3	-0.1	89.9	94.1	94.1	94.2	0.1
Durable goods.....	73.1	76.8	76.4	76.3	-0.1	89.1	94.5	94.1	94.3	0.2
Nondurable goods.....	77.6	78.6	78.9	78.9	0.0	91.6	93.4	94.1	94.0	-0.1
Private service-providing.....	103.1	104.8	104.9	104.6	-0.3	130.5	135.0	135.4	135.1	-0.2
Trade, transportation, and utilities.....	95.8	98.0	97.6	97.6	0.0	113.2	117.8	117.6	118.0	0.3
Wholesale trade.....	99.0	100.3	100.5	100.7	0.2	122.6	127.4	127.6	128.7	0.9
Retail trade.....	93.3	95.6	95.0	94.7	-0.3	104.5	108.5	107.9	107.7	-0.2
Transportation and warehousing.....	99.7	102.6	102.5	102.4	-0.1	118.7	124.7	124.9	125.0	0.1
Utilities.....	95.2	94.5	94.5	93.6	-1.0	117.8	120.0	120.5	119.5	-0.8
Information.....	92.1	90.5	90.7	89.8	-1.0	116.5	116.6	116.4	115.7	-0.6
Financial activities.....	102.3	101.0	101.8	100.9	-0.9	132.5	134.0	135.1	133.4	-1.3
Professional and business services.....	103.6	107.7	107.8	108.0	0.2	138.9	146.4	147.1	147.5	0.3
Education and health services.....	117.3	118.7	119.3	119.3	0.0	151.3	156.2	157.4	157.5	0.1
Leisure and hospitality.....	105.3	105.1	105.3	105.2	-0.1	134.4	134.9	135.4	134.1	-1.0
Other services.....	95.6	97.0	97.2	97.5	0.3	116.4	119.1	119.4	120.0	0.5

1 Data relate to production employees in mining and logging and manufacturing, construction employees in construction, and nonsupervisory employees in the service-providing industries. These groups account for approximately four-fifths of the total employment on private nonfarm payrolls.

2 The indexes of aggregate weekly hours are calculated by dividing the current month's estimates of aggregate hours by the corresponding 2002 annual average aggregate hours. Aggregate hours estimates are the product of estimates of average weekly hours and employment.

3 The indexes of aggregate weekly payrolls are calculated by dividing the current month's estimates of aggregate weekly payrolls by the corresponding 2002 annual average aggregate weekly payrolls. Aggregate payrolls estimates are the product of estimates of average hourly earnings, average weekly hours, and employment.

p Preliminary