

Transmission of material in this release is embargoed until
8:30 a.m. (EDT) Friday, July 6, 2012

USDL-12-1332

Technical information:

Household data: (202) 691-6378 • cpsinfo@bls.gov • www.bls.gov/cps

Establishment data: (202) 691-6555 • cesinfo@bls.gov • www.bls.gov/ces

Media contact: (202) 691-5902 • PressOffice@bls.gov

THE EMPLOYMENT SITUATION — JUNE 2012

Nonfarm payroll employment continued to edge up in June (+80,000), and the **unemployment rate** was unchanged at 8.2 percent, the U.S. Bureau of Labor Statistics reported today. Professional and business services added jobs, and employment in other major industries changed little over the month.

Chart 1. Unemployment rate, seasonally adjusted, June 2010 – June 2012

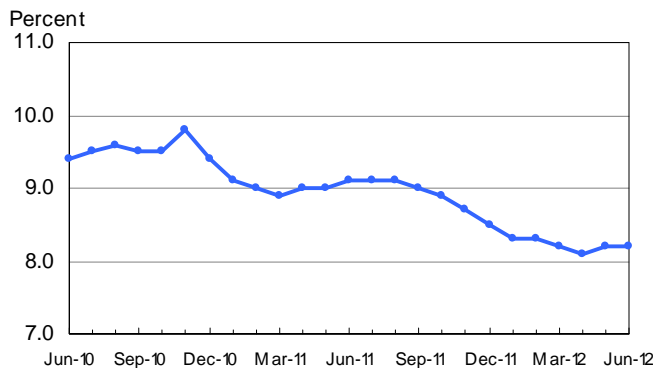
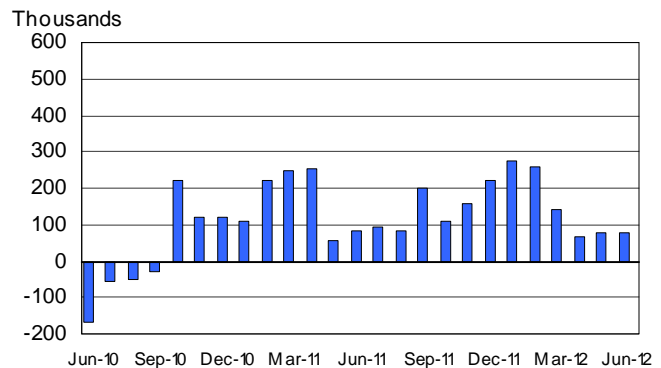


Chart 2. Nonfarm payroll employment over-the-month change, seasonally adjusted, June 2010 – June 2012



Household Survey Data

The **number of unemployed persons** (12.7 million) was essentially unchanged in June, and the **unemployment rate** held at 8.2 percent. (See table A-1.)

Among the **major worker groups**, the unemployment rate for blacks (14.4 percent) edged up over the month, while the rates for adult men (7.8 percent), adult women (7.4 percent), teenagers (23.7 percent), whites (7.4 percent), and Hispanics (11.0 percent) showed little or no change. The jobless rate for Asians was 6.3 percent in June (not seasonally adjusted), little changed from a year earlier. (See tables A-1, A-2, and A-3.)

In June, the number of **long-term unemployed** (those jobless for 27 weeks and over) was essentially unchanged at 5.4 million. These individuals accounted for 41.9 percent of the unemployed. (See table A-12.)

Both the **civilian labor force participation rate** and the **employment-population ratio** were unchanged in June at 63.8 and 58.6 percent, respectively. (See table A-1.)

The number of persons employed **part time for economic reasons** (sometimes referred to as involuntary part-time workers) was essentially unchanged at 8.2 million. These individuals were working part time because their hours had been cut back or because they were unable to find a full-time job. (See table A-8.)

In June, 2.5 million persons were **marginally attached to the labor force**, down from 2.7 million a year earlier. (These data are not seasonally adjusted.) These individuals were not in the labor force, wanted and were available for work, and had looked for a job sometime in the prior 12 months. They were not counted as unemployed because they had not searched for work in the 4 weeks preceding the survey. (See table A-16.)

Among the marginally attached, there were 821,000 **discouraged workers** in June, a decline of 161,000 from a year earlier. (These data are not seasonally adjusted.) Discouraged workers are persons not currently looking for work because they believe no jobs are available for them. The remaining 1.7 million persons marginally attached to the labor force in June had not searched for work in the 4 weeks preceding the survey for reasons such as school attendance or family responsibilities. (See table A-16.)

Establishment Survey Data

Total **nonfarm payroll employment** continued to edge up in June (+80,000). In the second quarter, employment growth averaged 75,000 per month, compared with an average monthly gain of 226,000 for the first quarter of the year. Slower job growth in the second quarter occurred in most major industries. (See table B-1.)

Professional and business services added 47,000 jobs in June, with temporary help services accounting for 25,000 of the increase. Employment also rose in management and technical consulting services (+9,000) and in computer systems design and related services (+7,000). Employment in professional and business services has grown by 1.5 million since its most recent low point in September 2009.

Employment in **manufacturing** continued to edge up in June (+11,000). Growth in the second quarter averaged 10,000 per month, compared with an average of 41,000 per month during the first quarter. In June, employment increased in motor vehicles and parts (+7,000) and in fabricated metal products (+5,000).

Employment continued to trend up in **health care** (+13,000) and **wholesale trade** (+9,000) in June.

Employment in other major industries, including **mining and logging, construction, retail trade, transportation and warehousing, financial activities, leisure and hospitality, and government**, showed little or no change.

The **average workweek for all employees** on private nonfarm payrolls edged up by 0.1 hour to 34.5 hours in June. The manufacturing workweek edged up by 0.1 hour to 40.7 hours, and factory

overtime was 3.3 hours for the fifth consecutive month. The average workweek for **production and nonsupervisory employees** on private nonfarm payrolls edged up by 0.1 hour to 33.8 hours. (See tables B-2 and B-7.)

In June, **average hourly earnings for all employees** on private nonfarm payrolls increased by 6 cents to \$23.50. Over the year, average hourly earnings have increased by 2.0 percent. In June, average hourly earnings of private-sector **production and nonsupervisory employees** increased by 5 cents to \$19.74. (See tables B-3 and B-8.)

The change in total nonfarm payroll employment for April was revised from +77,000 to +68,000, and the change for May was revised from +69,000 to +77,000.

The Employment Situation for July is scheduled to be released on Friday, August 3, 2012, at 8:30 a.m. (EDT).

Corrections to Establishment Survey Data for Book Stores and News Dealers and for Electronics Stores

BLS corrected some historical estimates from the Establishment Survey for book stores and news dealers and for electronics stores. Errors were made during the reconstruction of the data for these two industries to fit the NAICS 2012 industry definitions. The corrected series in these industries include women employees, nonsupervisory employees, hours and earnings for all employees, hours and earnings for nonsupervisory employees, and any series derived from them. Estimates of all employees were unaffected. The correction of the series also resulted in minor corrections at higher industry levels.

For more information, see www.bls.gov/bls/cesbook_stores_correction.htm.

HOUSEHOLD DATA

Summary table A. Household data, seasonally adjusted

[Numbers in thousands]

Category	June 2011	Apr. 2012	May 2012	June 2012	Change from: May 2012-June 2012
Employment status					
Civilian noninstitutional population.....	239,489	242,784	242,966	243,155	189
Civilian labor force.....	153,409	154,365	155,007	155,163	156
Participation rate.....	64.1	63.6	63.8	63.8	0.0
Employed.....	139,385	141,865	142,287	142,415	128
Employment-population ratio.....	58.2	58.4	58.6	58.6	0.0
Unemployed.....	14,024	12,500	12,720	12,749	29
Unemployment rate.....	9.1	8.1	8.2	8.2	0.0
Not in labor force.....	86,080	88,419	87,958	87,992	34
Unemployment rates					
Total, 16 years and over.....	9.1	8.1	8.2	8.2	0.0
Adult men (20 years and over).....	9.0	7.5	7.8	7.8	0.0
Adult women (20 years and over).....	8.0	7.4	7.4	7.4	0.0
Teenagers (16 to 19 years).....	24.6	24.9	24.6	23.7	-0.9
White.....	8.1	7.4	7.4	7.4	0.0
Black or African American.....	16.2	13.0	13.6	14.4	0.8
Asian (not seasonally adjusted).....	6.8	5.2	5.2	6.3	-
Hispanic or Latino ethnicity.....	11.6	10.3	11.0	11.0	0.0
Total, 25 years and over.....	7.9	6.8	6.9	6.9	0.0
Less than a high school diploma.....	14.2	12.5	13.0	12.6	-0.4
High school graduates, no college.....	10.0	7.9	8.1	8.4	0.3
Some college or associate degree.....	8.4	7.6	7.9	7.5	-0.4
Bachelor's degree and higher.....	4.4	4.0	3.9	4.1	0.2
Reason for unemployment					
Job losers and persons who completed temporary jobs.....	8,233	6,852	6,989	7,207	218
Job leavers.....	971	997	891	936	45
Reentrants.....	3,431	3,341	3,439	3,227	-212
New entrants.....	1,227	1,384	1,367	1,331	-36
Duration of unemployment					
Less than 5 weeks.....	3,068	2,543	2,580	2,810	230
5 to 14 weeks.....	2,976	2,814	3,002	2,826	-176
15 to 26 weeks.....	1,874	1,884	1,662	1,811	149
27 weeks and over.....	6,263	5,101	5,411	5,370	-41
Employed persons at work part time					
Part time for economic reasons.....	8,545	7,853	8,098	8,210	112
Slack work or business conditions.....	5,807	5,187	5,147	5,446	299
Could only find part-time work.....	2,474	2,367	2,649	2,514	-135
Part time for noneconomic reasons.....	18,461	18,832	19,393	18,829	-564
Persons not in the labor force (not seasonally adjusted)					
Marginally attached to the labor force.....	2,680	2,363	2,423	2,483	-
Discouraged workers.....	982	968	830	821	-

- Over-the-month changes are not displayed for not seasonally adjusted data.

NOTE: Persons whose ethnicity is identified as Hispanic or Latino may be of any race. Detail for the seasonally adjusted data shown in this table will not necessarily add to totals because of the independent seasonal adjustment of the various series. Updated population controls are introduced annually with the release of January data.

ESTABLISHMENT DATA
Summary table B. Establishment data, seasonally adjusted

Category	June 2011	Apr. 2012	May 2012 ^p	June 2012 ^p
EMPLOYMENT BY SELECTED INDUSTRY (Over-the-month change, in thousands)				
Total nonfarm.....	84	68	77	80
Total private.....	102	85	105	84
Goods-producing.....	18	4	-21	13
Mining and logging.....	9	1	5	0
Construction.....	-3	-7	-35	2
Manufacturing.....	12	10	9	11
Durable goods ¹	17	11	11	14
Motor vehicles and parts.....	1.8	1.2	4.4	6.7
Nondurable goods.....	-5	-1	-2	-3
Private service-providing ¹	84	81	126	71
Wholesale trade.....	5.8	13.1	14.5	8.8
Retail trade.....	15.8	24.2	2.1	-5.4
Transportation and warehousing.....	11.5	-18.3	32.3	-2.2
Information.....	-2	1	4	-8
Financial activities.....	-13	6	9	5
Professional and business services ¹	5	45	24	47
Temporary help services.....	-7.7	20.7	18.6	25.2
Education and health services ¹	25	15	44	2
Health care and social assistance.....	25.7	18.0	36.5	11.4
Leisure and hospitality.....	35	-4	-7	13
Other services.....	0	-1	3	9
Government.....	-18	-17	-28	-4
WOMEN AND PRODUCTION AND NONSUPERVISORY EMPLOYEES AS A PERCENT OF ALL EMPLOYEES ²				
Total nonfarm women employees.....	49.5	49.3	49.3	49.3
Total private women employees.....	47.9	47.8	47.8	47.8
Total private production and nonsupervisory employees.....	82.4	82.6	82.6	82.6
HOURS AND EARNINGS ALL EMPLOYEES				
Total private				
Average weekly hours.....	34.4	34.5	34.4	34.5
Average hourly earnings.....	\$ 23.05	\$ 23.40	\$ 23.44	\$ 23.50
Average weekly earnings.....	\$792.92	\$807.30	\$806.34	\$810.75
Index of aggregate weekly hours (2007=100) ³	94.1	95.9	95.7	96.1
Over-the-month percent change.....	0.1	0.0	-0.2	0.4
Index of aggregate weekly payrolls (2007=100) ⁴	103.5	107.0	107.0	107.7
Over-the-month percent change.....	0.3	0.2	0.0	0.7
HOURS AND EARNINGS PRODUCTION AND NONSUPERVISORY EMPLOYEES				
Total private				
Average weekly hours.....	33.7	33.7	33.7	33.8
Average hourly earnings.....	\$ 19.45	\$ 19.71	\$ 19.69	\$ 19.74
Average weekly earnings.....	\$655.47	\$664.23	\$663.55	\$667.21
Index of aggregate weekly hours (2002=100) ³	101.4	103.2	103.3	103.6
Over-the-month percent change.....	0.1	0.1	0.1	0.3
Index of aggregate weekly payrolls (2002=100) ⁴	131.7	135.9	135.9	136.7
Over-the-month percent change.....	0.2	0.3	0.0	0.6
DIFFUSION INDEX (Over 1-month span) ⁵				
Total private (266 industries).....	57.0	58.1	59.8	57.9
Manufacturing (81 industries).....	57.4	55.6	53.7	51.2

1 Includes other industries, not shown separately.

2 Data relate to production employees in mining and logging and manufacturing, construction employees in construction, and nonsupervisory employees in the service-providing industries.

3 The indexes of aggregate weekly hours are calculated by dividing the current month's estimates of aggregate hours by the corresponding annual average aggregate hours.

4 The indexes of aggregate weekly payrolls are calculated by dividing the current month's estimates of aggregate weekly payrolls by the corresponding annual average aggregate weekly payrolls.

5 Figures are the percent of industries with employment increasing plus one-half of the industries with unchanged employment, where 50 percent indicates an equal balance between industries with increasing and decreasing employment.

p Preliminary

NOTE: Data in this table have been corrected. For more information see http://www.bls.gov/bls/ceswomen_usps_correction.htm.

Frequently Asked Questions about Employment and Unemployment Estimates

Why are there two monthly measures of employment?

The household survey and establishment survey both produce sample-based estimates of employment and both have strengths and limitations. The establishment survey employment series has a smaller margin of error on the measurement of month-to-month change than the household survey because of its much larger sample size. An over-the-month employment change of about 100,000 is statistically significant in the establishment survey, while the threshold for a statistically significant change in the household survey is about 400,000. However, the household survey has a more expansive scope than the establishment survey because it includes the self-employed, unpaid family workers, agricultural workers, and private household workers, who are excluded by the establishment survey. The household survey also provides estimates of employment for demographic groups.

Are undocumented immigrants counted in the surveys?

It is likely that both surveys include at least some undocumented immigrants. However, neither the establishment nor the household survey is designed to identify the legal status of workers. Therefore, it is not possible to determine how many are counted in either survey. The establishment survey does not collect data on the legal status of workers. The household survey does include questions which identify the foreign and native born, but it does not include questions about the legal status of the foreign born.

Why does the establishment survey have revisions?

The establishment survey revises published estimates to improve its data series by incorporating additional information that was not available at the time of the initial publication of the estimates. The establishment survey revises its initial monthly estimates twice, in the immediately succeeding 2 months, to incorporate additional sample receipts from respondents in the survey and recalculated seasonal adjustment factors. For more information on the monthly revisions, please visit www.bls.gov/ces/cesrevinfo.htm.

On an annual basis, the establishment survey incorporates a benchmark revision that re-anchors estimates to nearly complete employment counts available from unemployment insurance tax records. The benchmark helps to control for sampling and modeling errors in the estimates. For more information on the annual benchmark revision, please visit www.bls.gov/web/cesbmart.htm.

Does the establishment survey sample include small firms?

Yes; about 40 percent of the establishment survey sample is comprised of business establishments with fewer than 20 employees. The establishment survey sample is designed to maximize the reliability of the total nonfarm employment estimate; firms from all size classes and industries are appropriately sampled to achieve that goal.

Does the establishment survey account for employment from new businesses?

Yes; monthly establishment survey estimates include an adjustment to account for the net employment change generated by business births and deaths. The adjustment comes from an econometric model that forecasts the monthly net jobs impact of business births and deaths based on the actual past values of the net impact that can be observed with a lag from the Quarterly Census of Employment and Wages. The

establishment survey uses modeling rather than sampling for this purpose because the survey is not immediately able to bring new businesses into the sample. There is an unavoidable lag between the birth of a new firm and its appearance on the sampling frame and availability for selection. BLS adds new businesses to the survey twice a year.

Is the count of unemployed persons limited to just those people receiving unemployment insurance benefits?

No; the estimate of unemployment is based on a monthly sample survey of households. All persons who are without jobs and are actively seeking and available to work are included among the unemployed. (People on temporary layoff are included even if they do not actively seek work.) There is no requirement or question relating to unemployment insurance benefits in the monthly survey.

Does the official unemployment rate exclude people who have stopped looking for work?

Yes; however, there are separate estimates of persons outside the labor force who want a job, including those who have stopped looking because they believe no jobs are available (discouraged workers). In addition, alternative measures of labor underutilization (some of which include discouraged workers and other groups not officially counted as unemployed) are published each month in The Employment Situation news release.

How can unusually severe weather affect employment and hours estimates?

In the establishment survey, the reference period is the pay period that includes the 12th of the month. Unusually severe weather is more likely to have an impact on average weekly hours than on employment. Average weekly hours are estimated for paid time during the pay period, including pay for holidays, sick leave, or other time off. The impact of severe weather on hours estimates typically, but not always, results in a reduction in average weekly hours. For example, some employees may be off work for part of the pay period and not receive pay for the time missed, while some workers, such as those dealing with cleanup or repair, may work extra hours.

In order for severe weather conditions to reduce the estimate of payroll employment, employees have to be off work without pay for the entire pay period. About half of all employees in the payroll survey have a 2-week, semi-monthly, or monthly pay period. Employees who receive pay for any part of the pay period, even 1 hour, are counted in the payroll employment figures. It is not possible to quantify the effect of extreme weather on estimates of employment from the establishment survey.

In the household survey, the reference period is generally the calendar week that includes the 12th of the month. Persons who miss the entire week's work for weather-related events are counted as employed whether or not they are paid for the time off. The household survey collects data on the number of persons who usually work full time but had reduced hours, or had a job but were not at work the entire week, due to bad weather. Current and historical data are available on the household survey's most requested statistics page at <http://data.bls.gov/cgi-bin/surveymost?ln>.

Technical Note

This news release presents statistics from two major surveys, the Current Population Survey (CPS; household survey) and the Current Employment Statistics survey (CES; establishment survey). The household survey provides information on the labor force, employment, and unemployment that appears in the "A" tables, marked HOUSEHOLD DATA. It is a sample survey of about 60,000 eligible households conducted by the U.S. Census Bureau for the U.S. Bureau of Labor Statistics (BLS).

The establishment survey provides information on employment, hours, and earnings of employees on nonfarm payrolls; the data appear in the "B" tables, marked ESTABLISHMENT DATA. BLS collects these data each month from the payroll records of a sample of nonagricultural business establishments. Each month the CES program surveys about 141,000 businesses and government agencies, representing approximately 486,000 individual worksites, in order to provide detailed industry data on employment, hours, and earnings of workers on nonfarm payrolls. The active sample includes approximately one-third of all nonfarm payroll employees.

For both surveys, the data for a given month relate to a particular week or pay period. In the household survey, the reference period is generally the calendar week that contains the 12th day of the month. In the establishment survey, the reference period is the pay period including the 12th, which may or may not correspond directly to the calendar week.

Coverage, definitions, and differences between surveys

Household survey. The sample is selected to reflect the entire civilian noninstitutional population. Based on responses to a series of questions on work and job search activities, each person 16 years and over in a sample household is classified as employed, unemployed, or not in the labor force.

People are classified as *employed* if they did any work at all as paid employees during the reference week; worked in their own business, profession, or on their own farm; or worked without pay at least 15 hours in a family business or farm. People are also counted as employed if they were temporarily absent from their jobs because of illness, bad weather, vacation, labor-management disputes, or personal reasons.

People are classified as *unemployed* if they meet all of the following criteria: they had no employment during the reference week; they were available for work at that time; and they made specific efforts to find employment sometime during the 4-week period ending with the reference week. Persons laid off from a job and expecting recall need not be looking for work to be counted as unemployed. The unemployment data derived from the household survey in no way depend upon the eligibility for or receipt of unemployment insurance benefits.

The *civilian labor force* is the sum of employed and

unemployed persons. Those not classified as employed or unemployed are *not in the labor force*. The *unemployment rate* is the number unemployed as a percent of the labor force. The *labor force participation rate* is the labor force as a percent of the population, and the *employment-population ratio* is the employed as a percent of the population. Additional information about the household survey can be found at www.bls.gov/cps/documentation.htm.

Establishment survey. The sample establishments are drawn from private nonfarm businesses such as factories, offices, and stores, as well as from federal, state, and local government entities. *Employees on nonfarm payrolls* are those who received pay for any part of the reference pay period, including persons on paid leave. Persons are counted in each job they hold. *Hours and earnings* data are produced for the private sector for all employees and for production and nonsupervisory employees. *Production and nonsupervisory employees* are defined as production and related employees in manufacturing and mining and logging, construction workers in construction, and non-supervisory employees in private service-providing industries.

Industries are classified on the basis of an establishment's principal activity in accordance with the 2012 version of the North American Industry Classification System. Additional information about the establishment survey can be found at www.bls.gov/ces/#technical.

Differences in employment estimates. The numerous conceptual and methodological differences between the household and establishment surveys result in important distinctions in the employment estimates derived from the surveys. Among these are:

- The household survey includes agricultural workers, the self-employed, unpaid family workers, and private household workers among the employed. These groups are excluded from the establishment survey.
- The household survey includes people on unpaid leave among the employed. The establishment survey does not.
- The household survey is limited to workers 16 years of age and older. The establishment survey is not limited by age.
- The household survey has no duplication of individuals, because individuals are counted only once, even if they hold more than one job. In the establishment survey, employees working at more than one job and thus appearing on more than one payroll are counted separately for each appearance.

Seasonal adjustment

Over the course of a year, the size of the nation's labor force and the levels of employment and unemployment undergo regularly occurring fluctuations. These events may result from seasonal changes in weather, major holidays, and the opening and closing of schools. The effect of such seasonal variation can be very large.

Because these seasonal events follow a more or less regular pattern each year, their influence on the level of a series can be tempered by adjusting for regular seasonal variation. These adjustments make nonseasonal developments, such as declines in employment or increases in the participation of women in the labor force, easier to spot. For example, in the household survey, the large number of youth entering the labor force each June is likely to obscure any other changes that have taken place relative to May, making it difficult to determine if the level of economic activity has risen or declined. Similarly, in the establishment survey, payroll employment in education declines by about 20 percent at the end of the spring term and later rises with the start of the fall term, obscuring the underlying employment trends in the industry. Because seasonal employment changes at the end and beginning of the school year can be estimated, the statistics can be adjusted to make underlying employment patterns more discernable. The seasonally adjusted figures provide a more useful tool with which to analyze changes in month-to-month economic activity.

Many seasonally adjusted series are independently adjusted in both the household and establishment surveys. However, the adjusted series for many major estimates, such as total payroll employment, employment in most major sectors, total employment, and unemployment are computed by aggregating independently adjusted component series. For example, total unemployment is derived by summing the adjusted series for four major age-sex components; this differs from the unemployment estimate that would be obtained by directly adjusting the total or by combining the duration, reasons, or more detailed age categories.

For both the household and establishment surveys, a concurrent seasonal adjustment methodology is used in which new seasonal factors are calculated each month using all relevant data, up to and including the data for the current month. In the household survey, new seasonal factors are used to adjust only the current month's data. In the establishment survey, however, new seasonal factors are used each month to adjust the three most recent monthly estimates. The prior 2 months are routinely revised to incorporate additional sample reports and recalculated seasonal adjustment factors. In both surveys, 5-year revisions to historical data are made once a year.

Reliability of the estimates

Statistics based on the household and establishment surveys are subject to both sampling and nonsampling error. When a sample rather than the entire population is

surveyed, there is a chance that the sample estimates may differ from the "true" population values they represent. The exact difference, or *sampling error*, varies depending on the particular sample selected, and this variability is measured by the standard error of the estimate. There is about a 90-percent chance, or level of confidence, that an estimate based on a sample will differ by no more than 1.6 standard errors from the "true" population value because of sampling error. BLS analyses are generally conducted at the 90-percent level of confidence.

For example, the confidence interval for the monthly change in total nonfarm employment from the establishment survey is on the order of plus or minus 100,000. Suppose the estimate of nonfarm employment increases by 50,000 from one month to the next. The 90-percent confidence interval on the monthly change would range from -50,000 to +150,000 (50,000 +/- 100,000). These figures do not mean that the sample results are off by these magnitudes, but rather that there is about a 90-percent chance that the "true" over-the-month change lies within this interval. Since this range includes values of less than zero, we could not say with confidence that nonfarm employment had, in fact, increased that month. If, however, the reported nonfarm employment rise was 250,000, then all of the values within the 90-percent confidence interval would be greater than zero. In this case, it is likely (at least a 90-percent chance) that nonfarm employment had, in fact, risen that month. At an unemployment rate of around 5.5 percent, the 90-percent confidence interval for the monthly change in unemployment as measured by the household survey is about +/- 280,000, and for the monthly change in the unemployment rate it is about +/- 0.19 percentage point.

In general, estimates involving many individuals or establishments have lower standard errors (relative to the size of the estimate) than estimates which are based on a small number of observations. The precision of estimates also is improved when the data are cumulated over time, such as for quarterly and annual averages.

The household and establishment surveys are also affected by *nonsampling error*, which can occur for many reasons, including the failure to sample a segment of the population, inability to obtain information for all respondents in the sample, inability or unwillingness of respondents to provide correct information on a timely basis, mistakes made by respondents, and errors made in the collection or processing of the data.

For example, in the establishment survey, estimates for the most recent 2 months are based on incomplete returns; for this reason, these estimates are labeled preliminary in the tables. It is only after two successive revisions to a monthly estimate, when nearly all sample reports have been received, that the estimate is considered final.

Another major source of nonsampling error in the establishment survey is the inability to capture, on a timely basis, employment generated by new firms. To correct for this systematic underestimation of employment growth, an estimation procedure with two components is used to account for business births. The first component excludes

employment losses from business deaths from sample-based estimation in order to offset the missing employment gains from business births. This is incorporated into the sample-based estimation procedure by simply not reflecting sample units going out of business, but imputing to them the same employment trend as the other firms in the sample. This procedure accounts for most of the net birth/death employment.

The second component is an ARIMA time series model designed to estimate the residual net birth/death employment not accounted for by the imputation. The historical time series used to create and test the ARIMA model was derived from the unemployment insurance universe micro-level database, and reflects the actual residual net of births and deaths over the past 5 years.

The sample-based estimates from the establishment survey are adjusted once a year (on a lagged basis) to

universe counts of payroll employment obtained from administrative records of the unemployment insurance program. The difference between the March sample-based employment estimates and the March universe counts is known as a benchmark revision, and serves as a rough proxy for total survey error. The new benchmarks also incorporate changes in the classification of industries. Over the past decade, absolute benchmark revisions for total nonfarm employment have averaged 0.3 percent, with a range from -0.7 to 0.6 percent.

Other information

Information in this release will be made available to sensory impaired individuals upon request. Voice phone: (202) 691-5200; Federal Relay Service: (800) 877-8339.

HOUSEHOLD DATA

Table A-1. Employment status of the civilian population by sex and age

[Numbers in thousands]

Employment status, sex, and age	Not seasonally adjusted			Seasonally adjusted ¹					
	June 2011	May 2012	June 2012	June 2011	Feb. 2012	Mar. 2012	Apr. 2012	May 2012	June 2012
TOTAL									
Civilian noninstitutional population.....	239,489	242,966	243,155	239,489	242,435	242,604	242,784	242,966	243,155
Civilian labor force.....	154,538	154,998	156,385	153,409	154,871	154,707	154,365	155,007	155,163
Participation rate.....	64.5	63.8	64.3	64.1	63.9	63.8	63.6	63.8	63.8
Employed.....	140,129	142,727	143,202	139,385	142,065	142,034	141,865	142,287	142,415
Employment-population ratio.....	58.5	58.7	58.9	58.2	58.6	58.5	58.4	58.6	58.6
Unemployed.....	14,409	12,271	13,184	14,024	12,806	12,673	12,500	12,720	12,749
Unemployment rate.....	9.3	7.9	8.4	9.1	8.3	8.2	8.1	8.2	8.2
Not in labor force.....	84,951	87,968	86,770	86,080	87,564	87,897	88,419	87,958	87,992
Persons who currently want a job.....	7,124	6,835	7,157	6,531	6,378	6,299	6,366	6,291	6,520
Men, 16 years and over									
Civilian noninstitutional population.....	116,250	117,177	117,277	116,250	116,896	116,986	117,081	117,177	117,277
Civilian labor force.....	82,757	82,409	83,369	81,992	82,165	82,179	81,983	82,350	82,450
Participation rate.....	71.2	70.3	71.1	70.5	70.3	70.2	70.0	70.3	70.3
Employed.....	74,848	75,712	76,338	74,068	75,318	75,369	75,256	75,401	75,486
Employment-population ratio.....	64.4	64.6	65.1	63.7	64.4	64.4	64.3	64.3	64.4
Unemployed.....	7,910	6,697	7,030	7,923	6,846	6,810	6,727	6,949	6,964
Unemployment rate.....	9.6	8.1	8.4	9.7	8.3	8.3	8.2	8.4	8.4
Not in labor force.....	33,493	34,768	33,909	34,259	34,732	34,807	35,098	34,827	34,827
Men, 20 years and over									
Civilian noninstitutional population.....	107,668	108,503	108,613	107,668	108,188	108,289	108,396	108,503	108,613
Civilian labor force.....	79,324	79,511	79,733	79,116	79,317	79,337	79,050	79,382	79,425
Participation rate.....	73.7	73.3	73.4	73.5	73.3	73.3	72.9	73.2	73.1
Employed.....	72,427	73,567	73,735	71,981	73,240	73,286	73,119	73,229	73,259
Employment-population ratio.....	67.3	67.8	67.9	66.9	67.7	67.7	67.5	67.5	67.4
Unemployed.....	6,897	5,945	5,998	7,135	6,077	6,051	5,930	6,153	6,166
Unemployment rate.....	8.7	7.5	7.5	9.0	7.7	7.6	7.5	7.8	7.8
Not in labor force.....	28,344	28,991	28,879	28,553	28,870	28,952	29,346	29,121	29,188
Women, 16 years and over									
Civilian noninstitutional population.....	123,239	125,788	125,878	123,239	125,539	125,619	125,703	125,788	125,878
Civilian labor force.....	71,781	72,589	73,017	71,417	72,706	72,529	72,382	72,657	72,713
Participation rate.....	58.2	57.7	58.0	58.0	57.9	57.7	57.6	57.8	57.8
Employed.....	65,282	67,015	66,863	65,316	66,747	66,665	66,609	66,886	66,929
Employment-population ratio.....	53.0	53.3	53.1	53.0	53.2	53.1	53.0	53.2	53.2
Unemployed.....	6,499	5,574	6,153	6,101	5,960	5,863	5,773	5,771	5,785
Unemployment rate.....	9.1	7.7	8.4	8.5	8.2	8.1	8.0	7.9	8.0
Not in labor force.....	51,458	53,200	52,862	51,822	52,833	53,090	53,321	53,131	53,165
Women, 20 years and over									
Civilian noninstitutional population.....	115,045	117,448	117,546	115,045	117,170	117,260	117,353	117,448	117,546
Civilian labor force.....	68,459	69,775	69,610	68,570	69,815	69,589	69,562	69,807	69,803
Participation rate.....	59.5	59.4	59.2	59.6	59.6	59.3	59.3	59.4	59.4
Employed.....	62,811	64,840	64,288	63,088	64,454	64,413	64,425	64,671	64,628
Employment-population ratio.....	54.6	55.2	54.7	54.8	55.0	54.9	54.9	55.1	55.0
Unemployed.....	5,648	4,936	5,322	5,482	5,361	5,176	5,137	5,136	5,175
Unemployment rate.....	8.2	7.1	7.6	8.0	7.7	7.4	7.4	7.4	7.4
Not in labor force.....	46,586	47,672	47,936	46,475	47,355	47,671	47,791	47,641	47,743
Both sexes, 16 to 19 years									
Civilian noninstitutional population.....	16,776	17,015	16,997	16,776	17,078	17,056	17,034	17,015	16,997
Civilian labor force.....	6,755	5,711	7,042	5,724	5,739	5,781	5,753	5,819	5,936
Participation rate.....	40.3	33.6	41.4	34.1	33.6	33.9	33.8	34.2	34.9
Employed.....	4,891	4,320	5,178	4,316	4,371	4,335	4,321	4,388	4,528
Employment-population ratio.....	29.2	25.4	30.5	25.7	25.6	25.4	25.4	25.8	26.6
Unemployed.....	1,864	1,391	1,864	1,408	1,367	1,447	1,432	1,431	1,408
Unemployment rate.....	27.6	24.4	26.5	24.6	23.8	25.0	24.9	24.6	23.7
Not in labor force.....	10,021	11,304	9,955	11,052	11,339	11,274	11,282	11,197	11,061

¹ The population figures are not adjusted for seasonal variation; therefore, identical numbers appear in the unadjusted and seasonally adjusted columns.

NOTE: Updated population controls are introduced annually with the release of January data.

HOUSEHOLD DATA

Table A-2. Employment status of the civilian population by race, sex, and age

[Numbers in thousands]

Employment status, race, sex, and age	Not seasonally adjusted			Seasonally adjusted ¹					
	June 2011	May 2012	June 2012	June 2011	Feb. 2012	Mar. 2012	Apr. 2012	May 2012	June 2012
WHITE									
Civilian noninstitutional population.....	192,989	193,004	193,120	192,989	192,691	192,788	192,893	193,004	193,120
Civilian labor force.....	125,335	123,897	124,624	124,526	123,848	123,713	123,499	123,989	123,783
Participation rate.....	64.9	64.2	64.5	64.5	64.3	64.2	64.0	64.2	64.1
Employed.....	114,995	115,015	115,280	114,428	114,754	114,697	114,355	114,767	114,674
Employment-population ratio.....	59.6	59.6	59.7	59.3	59.6	59.5	59.3	59.5	59.4
Unemployed.....	10,340	8,882	9,344	10,098	9,094	9,016	9,144	9,222	9,109
Unemployment rate.....	8.2	7.2	7.5	8.1	7.3	7.3	7.4	7.4	7.4
Not in labor force.....	67,654	69,107	68,496	68,463	68,843	69,076	69,394	69,015	69,337
Men, 20 years and over									
Civilian labor force.....	65,360	64,680	64,730	65,213	64,642	64,552	64,410	64,591	64,527
Participation rate.....	74.2	73.8	73.8	74.0	73.9	73.8	73.5	73.7	73.6
Employed.....	60,355	60,349	60,374	59,982	60,245	60,192	60,046	60,072	60,001
Employment-population ratio.....	68.5	68.8	68.8	68.0	68.9	68.8	68.6	68.5	68.4
Unemployed.....	5,005	4,331	4,356	5,231	4,397	4,360	4,364	4,519	4,526
Unemployment rate.....	7.7	6.7	6.7	8.0	6.8	6.8	6.8	7.0	7.0
Women, 20 years and over									
Civilian labor force.....	54,429	54,620	54,265	54,634	54,609	54,473	54,435	54,717	54,506
Participation rate.....	59.1	58.9	58.5	59.4	59.0	58.9	58.8	59.0	58.8
Employed.....	50,471	51,087	50,598	50,787	50,890	50,873	50,719	51,045	50,918
Employment-population ratio.....	54.8	55.1	54.6	55.2	55.0	55.0	54.8	55.1	54.9
Unemployed.....	3,958	3,533	3,667	3,847	3,719	3,600	3,716	3,672	3,588
Unemployment rate.....	7.3	6.5	6.8	7.0	6.8	6.6	6.8	6.7	6.6
Both sexes, 16 to 19 years									
Civilian labor force.....	5,546	4,597	5,629	4,679	4,596	4,688	4,654	4,681	4,750
Participation rate.....	43.3	36.3	44.4	36.5	36.1	36.9	36.7	36.9	37.5
Employed.....	4,168	3,579	4,308	3,660	3,619	3,632	3,591	3,649	3,755
Employment-population ratio.....	32.5	28.2	34.0	28.6	28.4	28.6	28.3	28.8	29.7
Unemployed.....	1,377	1,018	1,321	1,019	977	1,056	1,063	1,031	995
Unemployment rate.....	24.8	22.1	23.5	21.8	21.3	22.5	22.8	22.0	20.9
BLACK OR AFRICAN AMERICAN									
Civilian noninstitutional population.....	29,093	29,854	29,885	29,093	29,760	29,792	29,824	29,854	29,885
Civilian labor force.....	17,966	18,275	18,758	17,740	18,363	18,427	18,274	18,290	18,541
Participation rate.....	61.8	61.2	62.8	61.0	61.7	61.9	61.3	61.3	62.0
Employed.....	14,993	15,837	15,978	14,875	15,769	15,843	15,891	15,807	15,872
Employment-population ratio.....	51.5	53.0	53.5	51.1	53.0	53.2	53.3	52.9	53.1
Unemployed.....	2,972	2,438	2,780	2,865	2,593	2,584	2,383	2,484	2,668
Unemployment rate.....	16.5	13.3	14.8	16.2	14.1	14.0	13.0	13.6	14.4
Not in labor force.....	11,127	11,579	11,128	11,353	11,398	11,365	11,550	11,564	11,345
Men, 20 years and over									
Civilian labor force.....	8,155	8,270	8,376	8,107	8,239	8,283	8,162	8,281	8,324
Participation rate.....	68.7	68.0	68.8	68.3	68.1	68.4	67.3	68.1	68.4
Employed.....	6,793	7,082	7,204	6,740	7,064	7,137	7,054	7,102	7,146
Employment-population ratio.....	57.2	58.3	59.2	56.8	58.4	58.9	58.1	58.4	58.7
Unemployed.....	1,362	1,188	1,172	1,368	1,175	1,147	1,108	1,179	1,178
Unemployment rate.....	16.7	14.4	14.0	16.9	14.3	13.8	13.6	14.2	14.2
Women, 20 years and over									
Civilian labor force.....	9,011	9,327	9,471	8,967	9,410	9,473	9,443	9,346	9,482
Participation rate.....	61.6	62.0	62.9	61.3	62.8	63.1	62.8	62.1	63.0
Employed.....	7,760	8,317	8,266	7,735	8,240	8,307	8,423	8,284	8,281
Employment-population ratio.....	53.1	55.3	54.9	52.9	55.0	55.4	56.1	55.1	55.0
Unemployed.....	1,251	1,011	1,205	1,232	1,171	1,166	1,019	1,062	1,202
Unemployment rate.....	13.9	10.8	12.7	13.7	12.4	12.3	10.8	11.4	12.7
Both sexes, 16 to 19 years									
Civilian labor force.....	799	678	910	666	713	671	669	664	735
Participation rate.....	30.8	25.5	34.4	25.6	26.6	25.1	25.1	25.0	27.8
Employed.....	440	439	508	401	466	399	413	421	446
Employment-population ratio.....	16.9	16.5	19.2	15.4	17.4	14.9	15.5	15.9	16.8
Unemployed.....	360	239	402	265	247	272	256	242	289
Unemployment rate.....	45.0	35.2	44.2	39.8	34.7	40.5	38.2	36.5	39.3
ASIAN									
Civilian noninstitutional population.....	11,379	12,749	12,695	-	-	-	-	-	-

See footnotes at end of table.

HOUSEHOLD DATA

Table A-2. Employment status of the civilian population by race, sex, and age — Continued

[Numbers in thousands]

Employment status, race, sex, and age	Not seasonally adjusted			Seasonally adjusted ¹					
	June 2011	May 2012	June 2012	June 2011	Feb. 2012	Mar. 2012	Apr. 2012	May 2012	June 2012
Civilian labor force.....	7,384	8,080	8,202	—	—	—	—	—	—
Participation rate.....	64.9	63.4	64.6	—	—	—	—	—	—
Employed.....	6,881	7,656	7,682	—	—	—	—	—	—
Employment-population ratio.....	60.5	60.0	60.5	—	—	—	—	—	—
Unemployed.....	504	424	519	—	—	—	—	—	—
Unemployment rate.....	6.8	5.2	6.3	—	—	—	—	—	—
Not in labor force.....	3,995	4,669	4,493	—	—	—	—	—	—

¹ The population figures are not adjusted for seasonal variation; therefore, identical numbers appear in the unadjusted and seasonally adjusted columns.

- Data not available.

NOTE: Estimates for the above race groups will not sum to totals shown in table A-1 because data are not presented for all races. Updated population controls are introduced annually with the release of January data.

HOUSEHOLD DATA

Table A-3. Employment status of the Hispanic or Latino population by sex and age

[Numbers in thousands]

Employment status, sex, and age	Not seasonally adjusted			Seasonally adjusted ¹					
	June 2011	May 2012	June 2012	June 2011	Feb. 2012	Mar. 2012	Apr. 2012	May 2012	June 2012
HISPANIC OR LATINO ETHNICITY									
Civilian noninstitutional population.....	34,391	36,626	36,708	34,391	36,384	36,463	36,546	36,626	36,708
Civilian labor force.....	22,884	24,534	24,679	22,832	24,206	24,128	24,253	24,567	24,588
Participation rate.....	66.5	67.0	67.2	66.4	66.5	66.2	66.4	67.1	67.0
Employed.....	20,241	21,984	21,962	20,189	21,628	21,638	21,755	21,867	21,885
Employment-population ratio.....	58.9	60.0	59.8	58.7	59.4	59.3	59.5	59.7	59.6
Unemployed.....	2,643	2,550	2,718	2,643	2,579	2,491	2,498	2,700	2,703
Unemployment rate.....	11.5	10.4	11.0	11.6	10.7	10.3	10.3	11.0	11.0
Not in labor force.....	11,507	12,092	12,029	11,558	12,178	12,335	12,293	12,059	12,120
Men, 20 years and over									
Civilian labor force.....	13,004	13,486	13,425	-	-	-	-	-	-
Participation rate.....	81.7	81.8	81.2	-	-	-	-	-	-
Employed.....	11,731	12,195	12,147	-	-	-	-	-	-
Employment-population ratio.....	73.7	74.0	73.5	-	-	-	-	-	-
Unemployed.....	1,273	1,291	1,277	-	-	-	-	-	-
Unemployment rate.....	9.8	9.6	9.5	-	-	-	-	-	-
Women, 20 years and over									
Civilian labor force.....	8,861	9,904	9,909	-	-	-	-	-	-
Participation rate.....	58.8	60.1	60.0	-	-	-	-	-	-
Employed.....	7,852	8,993	8,886	-	-	-	-	-	-
Employment-population ratio.....	52.1	54.5	53.8	-	-	-	-	-	-
Unemployed.....	1,010	911	1,022	-	-	-	-	-	-
Unemployment rate.....	11.4	9.2	10.3	-	-	-	-	-	-
Both sexes, 16 to 19 years									
Civilian labor force.....	1,018	1,144	1,346	-	-	-	-	-	-
Participation rate.....	29.9	31.3	36.8	-	-	-	-	-	-
Employed.....	658	796	928	-	-	-	-	-	-
Employment-population ratio.....	19.3	21.8	25.4	-	-	-	-	-	-
Unemployed.....	360	348	418	-	-	-	-	-	-
Unemployment rate.....	35.4	30.4	31.0	-	-	-	-	-	-

¹ The population figures are not adjusted for seasonal variation; therefore, identical numbers appear in the unadjusted and seasonally adjusted columns.

- Data not available.

NOTE: Persons whose ethnicity is identified as Hispanic or Latino may be of any race. Updated population controls are introduced annually with the release of January data.

HOUSEHOLD DATA

Table A-4. Employment status of the civilian population 25 years and over by educational attainment

[Numbers in thousands]

Educational attainment	Not seasonally adjusted			Seasonally adjusted					
	June 2011	May 2012	June 2012	June 2011	Feb. 2012	Mar. 2012	Apr. 2012	May 2012	June 2012
Less than a high school diploma									
Civilian labor force.....	11,672	11,670	11,623	11,445	11,488	11,493	11,366	11,451	11,384
Participation rate.....	46.1	45.8	45.9	45.2	46.6	46.3	45.2	44.9	45.0
Employed.....	10,141	10,242	10,291	9,817	10,006	10,044	9,947	9,960	9,952
Employment-population ratio.....	40.0	40.2	40.6	38.8	40.6	40.4	39.6	39.1	39.3
Unemployed.....	1,531	1,428	1,332	1,628	1,483	1,449	1,419	1,491	1,431
Unemployment rate.....	13.1	12.2	11.5	14.2	12.9	12.6	12.5	13.0	12.6
High school graduates, no college¹									
Civilian labor force.....	37,351	37,119	36,851	37,596	36,799	36,475	36,718	36,924	36,984
Participation rate.....	60.2	59.8	59.8	60.5	59.0	59.0	59.2	59.5	60.0
Employed.....	33,813	34,239	33,884	33,822	33,761	33,573	33,834	33,928	33,869
Employment-population ratio.....	54.5	55.2	55.0	54.5	54.1	54.3	54.5	54.7	55.0
Unemployed.....	3,538	2,880	2,967	3,774	3,039	2,902	2,884	2,996	3,116
Unemployment rate.....	9.5	7.8	8.1	10.0	8.3	8.0	7.9	8.1	8.4
Some college or associate degree									
Civilian labor force.....	36,454	36,899	37,194	36,849	37,282	37,405	37,168	37,079	37,451
Participation rate.....	69.2	68.5	68.4	69.9	69.1	69.3	69.0	68.8	68.9
Employed.....	33,406	34,157	34,446	33,745	34,571	34,613	34,344	34,155	34,639
Employment-population ratio.....	63.4	63.4	63.4	64.0	64.1	64.2	63.7	63.4	63.7
Unemployed.....	3,048	2,741	2,748	3,104	2,711	2,793	2,824	2,924	2,812
Unemployment rate.....	8.4	7.4	7.4	8.4	7.3	7.5	7.6	7.9	7.5
Bachelor's degree and higher²									
Civilian labor force.....	46,633	48,191	47,631	46,910	47,890	48,191	47,977	48,232	47,923
Participation rate.....	76.2	76.7	75.5	76.7	76.4	76.2	76.2	76.8	76.0
Employed.....	44,590	46,408	45,674	44,854	45,875	46,189	46,062	46,355	45,949
Employment-population ratio.....	72.9	73.9	72.4	73.3	73.1	73.1	73.2	73.8	72.9
Unemployed.....	2,044	1,783	1,957	2,055	2,015	2,002	1,915	1,877	1,973
Unemployment rate.....	4.4	3.7	4.1	4.4	4.2	4.2	4.0	3.9	4.1

1 Includes persons with a high school diploma or equivalent.

2 Includes persons with bachelor's, master's, professional, and doctoral degrees.

NOTE: Updated population controls are introduced annually with the release of January data.

HOUSEHOLD DATA

Table A-5. Employment status of the civilian population 18 years and over by veteran status, period of service, and sex, not seasonally adjusted

[Numbers in thousands]

Employment status, veteran status, and period of service	Total		Men		Women	
	June 2011	June 2012	June 2011	June 2012	June 2011	June 2012
VETERANS, 18 years and over						
Civilian noninstitutional population.....	21,628	21,193	19,828	19,380	1,800	1,813
Civilian labor force.....	11,438	10,958	10,366	9,853	1,072	1,104
Participation rate.....	52.9	51.7	52.3	50.8	59.5	60.9
Employed.....	10,430	10,151	9,468	9,144	962	1,007
Employment-population ratio.....	48.2	47.9	47.8	47.2	53.5	55.5
Unemployed.....	1,007	806	898	709	109	97
Unemployment rate.....	8.8	7.4	8.7	7.2	10.2	8.8
Not in labor force.....	10,190	10,235	9,462	9,527	728	709
Gulf War-era II veterans						
Civilian noninstitutional population.....	2,387	2,597	1,980	2,168	407	429
Civilian labor force.....	1,955	2,061	1,683	1,767	272	294
Participation rate.....	81.9	79.4	85.0	81.5	66.7	68.4
Employed.....	1,695	1,865	1,456	1,602	239	264
Employment-population ratio.....	71.0	71.8	73.5	73.9	58.6	61.4
Unemployed.....	260	196	227	166	33	30
Unemployment rate.....	13.3	9.5	13.5	9.4	12.1	10.1
Not in labor force.....	432	536	296	401	136	136
Gulf War-era I veterans						
Civilian noninstitutional population.....	2,934	3,053	2,469	2,590	466	464
Civilian labor force.....	2,437	2,541	2,115	2,181	322	359
Participation rate.....	83.0	83.2	85.7	84.2	69.2	77.5
Employed.....	2,263	2,377	1,964	2,055	299	322
Employment-population ratio.....	77.1	77.9	79.5	79.4	64.3	69.4
Unemployed.....	174	163	151	126	23	37
Unemployment rate.....	7.1	6.4	7.2	5.8	7.1	10.4
Not in labor force.....	497	513	354	408	144	105
World War II, Korean War, and Vietnam-era veterans						
Civilian noninstitutional population.....	10,461	9,897	10,122	9,583	339	314
Civilian labor force.....	3,648	3,234	3,539	3,136	109	98
Participation rate.....	34.9	32.7	35.0	32.7	32.0	31.2
Employed.....	3,364	3,005	3,264	2,909	100	96
Employment-population ratio.....	32.2	30.4	32.2	30.4	29.4	30.5
Unemployed.....	283	229	275	227	9	2
Unemployment rate.....	7.8	7.1	7.8	7.2	8.0	2.1
Not in labor force.....	6,814	6,663	6,583	6,447	231	216
Veterans of other service periods						
Civilian noninstitutional population.....	5,845	5,646	5,258	5,040	588	606
Civilian labor force.....	3,398	3,122	3,029	2,769	369	353
Participation rate.....	58.1	55.3	57.6	54.9	62.9	58.3
Employed.....	3,108	2,903	2,784	2,578	324	325
Employment-population ratio.....	53.2	51.4	53.0	51.2	55.2	53.7
Unemployed.....	290	219	244	191	45	28
Unemployment rate.....	8.5	7.0	8.1	6.9	12.3	7.9
Not in labor force.....	2,447	2,523	2,229	2,271	218	253
NONVETERANS, 18 years and over						
Civilian noninstitutional population.....	209,273	213,167	91,992	93,488	117,281	119,679
Civilian labor force.....	140,742	142,908	71,192	72,282	69,550	70,625
Participation rate.....	67.3	67.0	77.4	77.3	59.3	59.0
Employed.....	128,145	131,356	64,605	66,415	63,540	64,942
Employment-population ratio.....	61.2	61.6	70.2	71.0	54.2	54.3
Unemployed.....	12,597	11,551	6,587	5,868	6,010	5,684
Unemployment rate.....	9.0	8.1	9.3	8.1	8.6	8.0
Not in labor force.....	68,531	70,259	20,800	21,206	47,731	49,053

NOTE: Veterans served on active duty in the U.S. Armed Forces and were not on active duty at the time of the survey. Nonveterans never served on active duty in the U.S. Armed Forces. Veterans could have served anywhere in the world during these periods of service: Gulf War era II (September 2001-present), Gulf War era I (August 1990-August 2001), Vietnam era (August 1964-April 1975), Korean War (July 1950-January 1955), World War II (December 1941-December 1946), and other service periods (all other time periods). Veterans who served in more than one wartime period are classified only in the most recent one. Veterans who served during one of the selected wartime periods and another period are classified only in the wartime period. Updated population controls are introduced annually with the release of January data.

HOUSEHOLD DATA

Table A-6. Employment status of the civilian population by sex, age, and disability status, not seasonally adjusted

[Numbers in thousands]

Employment status, sex, and age	Persons with a disability		Persons with no disability	
	June 2011	June 2012	June 2011	June 2012
TOTAL, 16 years and over				
Civilian noninstitutional population.....	27,665	28,097	211,825	215,058
Civilian labor force.....	5,903	5,755	148,635	150,630
Participation rate.....	21.3	20.5	70.2	70.0
Employed.....	4,903	4,987	135,226	138,214
Employment-population ratio.....	17.7	17.7	63.8	64.3
Unemployed.....	1,000	768	13,409	12,416
Unemployment rate.....	16.9	13.3	9.0	8.2
Not in labor force.....	21,762	22,342	63,189	64,428
Men, 16 to 64 years				
Civilian labor force.....	2,758	2,546	75,997	76,457
Participation rate.....	36.2	34.2	83.3	83.6
Employed.....	2,252	2,215	68,873	70,073
Employment-population ratio.....	29.6	29.8	75.5	76.6
Unemployed.....	507	332	7,124	6,385
Unemployment rate.....	18.4	13.0	9.4	8.4
Not in labor force.....	4,852	4,893	15,231	15,016
Women, 16 to 64 years				
Civilian labor force.....	2,262	2,281	66,556	67,429
Participation rate.....	29.4	29.7	71.3	71.1
Employed.....	1,838	1,929	60,647	61,863
Employment-population ratio.....	23.9	25.1	64.9	65.2
Unemployed.....	425	352	5,909	5,566
Unemployment rate.....	18.8	15.4	8.9	8.3
Not in labor force.....	5,436	5,391	26,822	27,390
Both sexes, 65 years and over				
Civilian labor force.....	882	927	6,083	6,744
Participation rate.....	7.1	7.1	22.3	23.4
Employed.....	814	843	5,707	6,279
Employment-population ratio.....	6.6	6.5	21.0	21.8
Unemployed.....	69	84	376	465
Unemployment rate.....	7.8	9.1	6.2	6.9
Not in labor force.....	11,474	12,058	21,136	22,022

NOTE: A person with a disability has at least one of the following conditions: is deaf or has serious difficulty hearing; is blind or has serious difficulty seeing even when wearing glasses; has serious difficulty concentrating, remembering, or making decisions because of a physical, mental, or emotional condition; has serious difficulty walking or climbing stairs; has difficulty dressing or bathing; or has difficulty doing errands alone such as visiting a doctor's office or shopping because of a physical, mental, or emotional condition. Updated population controls are introduced annually with the release of January data.

HOUSEHOLD DATA

Table A-7. Employment status of the civilian population by nativity and sex, not seasonally adjusted

[Numbers in thousands]

Employment status and nativity	Total		Men		Women	
	June 2011	June 2012	June 2011	June 2012	June 2011	June 2012
Foreign born, 16 years and over						
Civilian noninstitutional population.....	36,323	37,315	18,132	18,294	18,191	19,021
Civilian labor force.....	24,294	25,009	14,495	14,588	9,799	10,420
Participation rate.....	66.9	67.0	79.9	79.7	53.9	54.8
Employed.....	22,260	22,985	13,345	13,502	8,916	9,483
Employment-population ratio.....	61.3	61.6	73.6	73.8	49.0	49.9
Unemployed.....	2,034	2,024	1,150	1,086	884	938
Unemployment rate.....	8.4	8.1	7.9	7.4	9.0	9.0
Not in labor force.....	12,029	12,306	3,637	3,705	8,392	8,601
Native born, 16 years and over						
Civilian noninstitutional population.....	203,166	205,840	98,119	98,984	105,048	106,857
Civilian labor force.....	130,244	131,377	68,262	68,781	61,982	62,596
Participation rate.....	64.1	63.8	69.6	69.5	59.0	58.6
Employed.....	117,869	120,217	61,503	62,836	56,366	57,380
Employment-population ratio.....	58.0	58.4	62.7	63.5	53.7	53.7
Unemployed.....	12,375	11,160	6,759	5,944	5,616	5,216
Unemployment rate.....	9.5	8.5	9.9	8.6	9.1	8.3
Not in labor force.....	72,922	74,464	29,856	30,203	43,066	44,261

NOTE: The foreign born are those residing in the United States who were not U.S. citizens at birth. That is, they were born outside the United States or one of its outlying areas such as Puerto Rico or Guam, to parents neither of whom was a U.S. citizen. The native born are persons who were born in the United States or one of its outlying areas such as Puerto Rico or Guam or who were born abroad of at least one parent who was a U.S. citizen. Updated population controls are introduced annually with the release of January data.

HOUSEHOLD DATA

Table A-8. Employed persons by class of worker and part-time status

[In thousands]

Category	Not seasonally adjusted			Seasonally adjusted					
	June 2011	May 2012	June 2012	June 2011	Feb. 2012	Mar. 2012	Apr. 2012	May 2012	June 2012
CLASS OF WORKER									
Agriculture and related industries.....	2,419	2,371	2,377	2,224	2,185	2,218	2,150	2,274	2,206
Wage and salary workers ¹	1,507	1,482	1,514	1,390	1,353	1,394	1,342	1,423	1,399
Self-employed workers, unincorporated.....	875	843	826	832	814	811	793	815	786
Unpaid family workers.....	36	46	37	-	-	-	-	-	-
Nonagricultural industries.....	137,711	140,356	140,824	137,125	139,945	139,984	139,749	140,037	140,205
Wage and salary workers ¹	128,883	131,493	131,694	128,529	131,365	131,370	131,136	131,322	131,308
Government.....	20,139	20,322	19,679	20,320	20,617	20,338	19,896	20,059	19,938
Private industries.....	108,744	111,172	112,015	108,259	110,778	111,114	111,249	111,421	111,433
Private households.....	766	834	832	-	-	-	-	-	-
Other industries.....	107,977	110,337	111,183	107,548	110,138	110,469	110,527	110,613	110,671
Self-employed workers, unincorporated.....	8,752	8,784	9,049	8,550	8,477	8,514	8,512	8,598	8,787
Unpaid family workers.....	76	78	82	-	-	-	-	-	-
PERSONS AT WORK PART TIME²									
All industries									
Part time for economic reasons ³	8,738	7,837	8,394	8,545	8,119	7,672	7,853	8,098	8,210
Slack work or business conditions.....	5,660	4,961	5,378	5,807	5,446	5,081	5,187	5,147	5,446
Could only find part-time work.....	2,570	2,620	2,599	2,474	2,404	2,341	2,367	2,649	2,514
Part time for noneconomic reasons ⁴	17,355	19,694	17,654	18,461	18,827	18,523	18,832	19,393	18,829
Nonagricultural industries									
Part time for economic reasons ³	8,600	7,736	8,268	8,400	7,988	7,584	7,737	7,982	8,075
Slack work or business conditions.....	5,570	4,901	5,294	5,704	5,356	5,000	5,086	5,078	5,355
Could only find part-time work.....	2,537	2,588	2,587	2,308	2,365	2,295	2,324	2,616	2,493
Part time for noneconomic reasons ⁴	16,983	19,319	17,285	18,093	18,399	18,100	18,418	18,930	18,438

1 Includes self-employed workers whose businesses are incorporated.

2 Refers to those who worked 1 to 34 hours during the survey reference week and excludes employed persons who were absent from their jobs for the entire week.

3 Refers to those who worked 1 to 34 hours during the reference week for an economic reason such as slack work or unfavorable business conditions, inability to find full-time work, or seasonal declines in demand.

4 Refers to persons who usually work part time for noneconomic reasons such as childcare problems, family or personal obligations, school or training, retirement or Social Security limits on earnings, and other reasons. This excludes persons who usually work full time but worked only 1 to 34 hours during the reference week for reasons such as vacations, holidays, illness, and bad weather.

- Data not available.

NOTE: Detail for the seasonally adjusted data shown in this table will not necessarily add to totals because of the independent seasonal adjustment of the various series. Updated population controls are introduced annually with the release of January data.

HOUSEHOLD DATA

Table A-9. Selected employment indicators

[Numbers in thousands]

Characteristic	Not seasonally adjusted			Seasonally adjusted					
	June 2011	May 2012	June 2012	June 2011	Feb. 2012	Mar. 2012	Apr. 2012	May 2012	June 2012
AGE AND SEX									
Total, 16 years and over.....	140,129	142,727	143,202	139,385	142,065	142,034	141,865	142,287	142,415
16 to 19 years.....	4,891	4,320	5,178	4,316	4,371	4,335	4,321	4,388	4,528
16 to 17 years.....	1,554	1,347	1,694	1,366	1,337	1,395	1,421	1,418	1,471
18 to 19 years.....	3,337	2,974	3,484	2,946	3,050	2,955	2,875	2,968	3,069
20 years and over.....	135,238	138,407	138,024	135,069	137,694	137,699	137,544	137,899	137,887
20 to 24 years.....	13,289	13,360	13,729	12,922	13,395	13,371	13,329	13,429	13,361
25 years and over.....	121,949	125,046	124,295	122,224	124,243	124,407	124,166	124,472	124,506
25 to 54 years.....	93,441	94,520	94,005	93,542	94,056	94,267	94,128	94,205	94,069
25 to 34 years.....	30,463	30,748	30,656	30,442	30,483	30,568	30,724	30,714	30,650
35 to 44 years.....	30,170	30,656	30,431	30,206	30,638	30,672	30,539	30,519	30,450
45 to 54 years.....	32,808	33,116	32,917	32,893	32,935	33,027	32,866	32,971	32,969
55 years and over.....	28,509	30,527	30,290	28,682	30,187	30,140	30,038	30,268	30,437
Men, 16 years and over.....	74,848	75,712	76,338	74,068	75,318	75,369	75,256	75,401	75,486
16 to 19 years.....	2,421	2,145	2,603	2,088	2,079	2,083	2,136	2,173	2,227
16 to 17 years.....	775	628	779	649	650	656	685	655	654
18 to 19 years.....	1,646	1,518	1,823	1,452	1,424	1,424	1,461	1,513	1,598
20 years and over.....	72,427	73,567	73,735	71,981	73,240	73,286	73,119	73,229	73,259
20 to 24 years.....	7,051	6,909	7,130	6,762	6,851	6,927	6,863	6,898	6,849
25 years and over.....	65,376	66,658	66,606	65,225	66,376	66,327	66,156	66,308	66,420
25 to 54 years.....	50,269	50,525	50,538	50,111	50,382	50,393	50,329	50,304	50,357
25 to 34 years.....	16,666	16,648	16,664	16,626	16,498	16,538	16,624	16,654	16,633
35 to 44 years.....	16,386	16,500	16,431	16,363	16,564	16,470	16,425	16,421	16,401
45 to 54 years.....	17,217	17,377	17,442	17,122	17,319	17,385	17,280	17,229	17,323
55 years and over.....	15,108	16,133	16,068	15,114	15,994	15,934	15,827	16,004	16,064
Women, 16 years and over.....	65,282	67,015	66,863	65,316	66,747	66,665	66,609	66,886	66,929
16 to 19 years.....	2,471	2,175	2,575	2,228	2,293	2,252	2,184	2,215	2,301
16 to 17 years.....	779	719	915	717	687	739	736	762	817
18 to 19 years.....	1,691	1,456	1,660	1,494	1,625	1,531	1,414	1,454	1,471
20 years and over.....	62,811	64,840	64,288	63,088	64,454	64,413	64,425	64,671	64,628
20 to 24 years.....	6,238	6,451	6,599	6,160	6,544	6,444	6,467	6,531	6,512
25 years and over.....	56,573	58,389	57,689	56,999	57,867	58,079	58,010	58,165	58,086
25 to 54 years.....	43,172	43,995	43,467	43,431	43,674	43,873	43,800	43,901	43,712
25 to 34 years.....	13,797	14,101	13,992	13,816	13,985	14,030	14,099	14,060	14,016
35 to 44 years.....	13,784	14,156	14,000	13,843	14,074	14,202	14,114	14,098	14,050
45 to 54 years.....	15,591	15,738	15,475	15,771	15,615	15,642	15,586	15,742	15,646
55 years and over.....	13,401	14,394	14,222	13,568	14,193	14,206	14,211	14,264	14,373
MARITAL STATUS									
Married men, spouse present.....	43,096	43,903	43,740	43,075	43,556	43,635	43,582	43,798	43,712
Married women, spouse present.....	33,449	34,673	34,177	33,723	34,341	34,325	34,207	34,620	34,526
Women who maintain families.....	9,038	9,516	9,264	-	-	-	-	-	-
FULL- OR PART-TIME STATUS									
Full-time workers ¹	113,255	114,634	116,024	111,965	114,408	115,290	114,478	114,212	114,573
Part-time workers ²	26,875	28,092	27,178	27,624	27,576	26,912	27,420	28,038	27,894
MULTIPLE JOBHOLDERS									
Total multiple jobholders.....	6,861	7,174	6,707	6,884	6,999	6,985	6,870	6,959	6,769
Percent of total employed.....	4.9	5.0	4.7	4.9	4.9	4.9	4.8	4.9	4.8
SELF-EMPLOYMENT									
Self-employed workers, incorporated.....	5,155	5,419	5,206	-	-	-	-	-	-
Self-employed workers, unincorporated.....	9,627	9,627	9,875	9,382	9,291	9,325	9,305	9,413	9,572

1 Employed full-time workers are persons who usually work 35 hours or more per week.

2 Employed part-time workers are persons who usually work less than 35 hours per week.

- Data not available.

NOTE: Detail for the seasonally adjusted data shown in this table will not necessarily add to totals because of the independent seasonal adjustment of the various series. Updated population controls are introduced annually with the release of January data.

HOUSEHOLD DATA

Table A-10. Selected unemployment indicators, seasonally adjusted

Characteristic	Number of unemployed persons (in thousands)			Unemployment rates					
	June 2011	May 2012	June 2012	June 2011	Feb. 2012	Mar. 2012	Apr. 2012	May 2012	June 2012
AGE AND SEX									
Total, 16 years and over.....	14,024	12,720	12,749	9.1	8.3	8.2	8.1	8.2	8.2
16 to 19 years.....	1,408	1,431	1,408	24.6	23.8	25.0	24.9	24.6	23.7
16 to 17 years.....	529	512	539	27.9	29.9	28.8	26.4	26.5	26.8
18 to 19 years.....	871	914	864	22.8	20.8	22.9	24.5	23.5	22.0
20 years and over.....	12,617	11,289	11,341	8.5	7.7	7.5	7.4	7.6	7.6
20 to 24 years.....	2,191	1,989	2,119	14.5	13.8	13.2	13.2	12.9	13.7
25 years and over.....	10,497	9,297	9,268	7.9	7.0	6.8	6.8	6.9	6.9
25 to 54 years.....	8,360	7,196	7,245	8.2	7.3	7.1	6.9	7.1	7.2
25 to 34 years.....	3,233	2,727	2,739	9.6	8.7	8.6	8.1	8.2	8.2
35 to 44 years.....	2,537	2,231	2,289	7.7	6.8	6.4	6.5	6.8	7.0
45 to 54 years.....	2,590	2,238	2,217	7.3	6.4	6.2	6.2	6.4	6.3
55 years and over.....	2,128	2,096	1,998	6.9	5.9	6.2	6.3	6.5	6.2
Men, 16 years and over.....	7,923	6,949	6,964	9.7	8.3	8.3	8.2	8.4	8.4
16 to 19 years.....	788	796	798	27.4	27.0	26.7	27.2	26.8	26.4
16 to 17 years.....	281	267	294	30.2	33.5	30.1	28.9	28.9	31.0
18 to 19 years.....	504	523	497	25.8	23.9	25.1	26.3	25.7	23.7
20 years and over.....	7,135	6,153	6,166	9.0	7.7	7.6	7.5	7.8	7.8
20 to 24 years.....	1,245	1,130	1,244	15.6	15.6	14.1	14.1	14.1	15.4
25 years and over.....	5,964	5,006	4,963	8.4	6.7	6.8	6.7	7.0	7.0
25 to 54 years.....	4,690	3,808	3,806	8.6	7.1	7.0	6.9	7.0	7.0
25 to 34 years.....	1,838	1,435	1,405	10.0	8.6	8.6	8.1	7.9	7.8
35 to 44 years.....	1,439	1,166	1,231	8.1	6.4	6.5	6.4	6.6	7.0
45 to 54 years.....	1,412	1,207	1,171	7.6	6.2	6.0	6.1	6.5	6.3
55 years and over.....	1,274	1,197	1,157	7.8	5.7	6.3	6.3	7.0	6.7
Women, 16 years and over.....	6,101	5,771	5,785	8.5	8.2	8.1	8.0	7.9	8.0
16 to 19 years.....	619	635	610	21.7	20.7	23.4	22.5	22.3	21.0
16 to 17 years.....	249	246	245	25.8	26.1	27.6	23.8	24.4	23.1
18 to 19 years.....	367	390	367	19.7	17.8	20.7	22.7	21.2	20.0
20 years and over.....	5,482	5,136	5,175	8.0	7.7	7.4	7.4	7.4	7.4
20 to 24 years.....	946	859	875	13.3	11.7	12.2	12.3	11.6	11.8
25 years and over.....	4,533	4,291	4,304	7.4	7.2	6.8	6.8	6.9	6.9
25 to 54 years.....	3,670	3,388	3,439	7.8	7.6	7.2	7.0	7.2	7.3
25 to 34 years.....	1,394	1,292	1,334	9.2	8.8	8.6	8.2	8.4	8.7
35 to 44 years.....	1,098	1,065	1,059	7.3	7.3	6.4	6.7	7.0	7.0
45 to 54 years.....	1,178	1,031	1,046	6.9	6.6	6.5	6.2	6.1	6.3
55 years and over ¹	897	847	879	6.3	6.1	5.9	5.8	5.6	5.8
MARITAL STATUS									
Married men, spouse present.....	2,813	2,440	2,251	6.1	5.0	5.1	5.2	5.3	4.9
Married women, spouse present.....	2,004	1,799	1,957	5.6	5.5	5.3	5.3	4.9	5.4
Women who maintain families ¹	1,325	1,168	1,237	12.8	11.7	10.8	10.2	10.9	11.8
FULL- OR PART-TIME STATUS									
Full-time workers ²	12,085	10,858	10,890	9.7	8.8	8.6	8.5	8.7	8.7
Part-time workers ³	1,971	1,826	1,877	6.7	6.0	6.2	6.3	6.1	6.3

1 Not seasonally adjusted.

2 Full-time workers are unemployed persons who have expressed a desire to work full time (35 hours or more per week) or are on layoff from full-time jobs.

3 Part-time workers are unemployed persons who have expressed a desire to work part time (less than 35 hours per week) or are on layoff from part-time jobs.

NOTE: Detail for the seasonally adjusted data shown in this table will not necessarily add to totals because of the independent seasonal adjustment of the various series. Updated population controls are introduced annually with the release of January data.

HOUSEHOLD DATA

Table A-11. Unemployed persons by reason for unemployment

[Numbers in thousands]

Reason	Not seasonally adjusted			Seasonally adjusted					
	June 2011	May 2012	June 2012	June 2011	Feb. 2012	Mar. 2012	Apr. 2012	May 2012	June 2012
NUMBER OF UNEMPLOYED									
Job losers and persons who completed temporary jobs.....	7,940	6,607	6,927	8,233	7,209	7,020	6,852	6,989	7,207
On temporary layoff.....	1,097	909	1,188	1,253	1,135	1,120	1,083	1,106	1,331
Not on temporary layoff.....	6,843	5,699	5,739	6,980	6,075	5,900	5,768	5,883	5,875
Permanent job losers.....	5,500	4,458	4,490	5,573	4,755	4,632	4,529	4,553	4,560
Persons who completed temporary jobs.....	1,343	1,240	1,249	1,407	1,320	1,268	1,239	1,330	1,315
Job leavers.....	923	849	879	971	1,031	1,117	997	891	936
Reentrants.....	3,836	3,513	3,556	3,431	3,361	3,269	3,341	3,439	3,227
New entrants.....	1,710	1,302	1,822	1,227	1,392	1,433	1,384	1,367	1,331
PERCENT DISTRIBUTION									
Job losers and persons who completed temporary jobs.....	55.1	53.8	52.5	59.4	55.5	54.7	54.5	55.1	56.7
On temporary layoff.....	7.6	7.4	9.0	9.0	8.7	8.7	8.6	8.7	10.5
Not on temporary layoff.....	47.5	46.4	43.5	50.4	46.7	46.0	45.9	46.4	46.3
Job leavers.....	6.4	6.9	6.7	7.0	7.9	8.7	7.9	7.0	7.4
Reentrants.....	26.6	28.6	27.0	24.8	25.9	25.5	26.6	27.1	25.4
New entrants.....	11.9	10.6	13.8	8.9	10.7	11.2	11.0	10.8	10.5
UNEMPLOYED AS A PERCENT OF THE CIVILIAN LABOR FORCE									
Job losers and persons who completed temporary jobs.....	5.1	4.3	4.4	5.4	4.7	4.5	4.4	4.5	4.6
Job leavers.....	0.6	0.5	0.6	0.6	0.7	0.7	0.6	0.6	0.6
Reentrants.....	2.5	2.3	2.3	2.2	2.2	2.1	2.2	2.2	2.1
New entrants.....	1.1	0.8	1.2	0.8	0.9	0.9	0.9	0.9	0.9

NOTE: Updated population controls are introduced annually with the release of January data.

HOUSEHOLD DATA

Table A-12. Unemployed persons by duration of unemployment

[Numbers in thousands]

Duration	Not seasonally adjusted			Seasonally adjusted					
	June 2011	May 2012	June 2012	June 2011	Feb. 2012	Mar. 2012	Apr. 2012	May 2012	June 2012
NUMBER OF UNEMPLOYED									
Less than 5 weeks.....	3,808	2,572	3,627	3,068	2,541	2,572	2,543	2,580	2,810
5 to 14 weeks.....	2,698	2,442	2,546	2,976	2,807	2,754	2,814	3,002	2,826
15 weeks and over.....	7,903	7,257	7,010	8,137	7,397	7,175	6,984	7,073	7,182
15 to 26 weeks.....	1,845	1,852	1,793	1,874	1,971	1,867	1,884	1,662	1,811
27 weeks and over.....	6,058	5,405	5,217	6,263	5,426	5,308	5,101	5,411	5,370
Average (mean) duration, in weeks ¹	38.0	41.4	38.2	39.8	40.0	39.4	39.1	39.7	39.9
Median duration, in weeks.....	19.3	22.0	17.4	22.1	20.3	19.9	19.4	20.1	19.8
PERCENT DISTRIBUTION									
Less than 5 weeks.....	26.4	21.0	27.5	21.6	19.9	20.6	20.6	20.4	21.9
5 to 14 weeks.....	18.7	19.9	19.3	21.0	22.0	22.0	22.8	23.7	22.0
15 weeks and over.....	54.8	59.1	53.2	57.4	58.0	57.4	56.6	55.9	56.0
15 to 26 weeks.....	12.8	15.1	13.6	13.2	15.5	14.9	15.3	13.1	14.1
27 weeks and over.....	42.0	44.0	39.6	44.2	42.6	42.5	41.3	42.8	41.9

¹ Beginning in January 2011, this series reflects a change to the collection of data on unemployment duration. For more information, see www.bls.gov/cps/duration.htm.

NOTE: Updated population controls are introduced annually with the release of January data.

HOUSEHOLD DATA

Table A-13. Employed and unemployed persons by occupation, not seasonally adjusted

[Numbers in thousands]

Occupation	Employed		Unemployed		Unemployment rates	
	June 2011	June 2012	June 2011	June 2012	June 2011	June 2012
Total, 16 years and over ¹	140,129	143,202	14,409	13,184	9.3	8.4
Management, professional, and related occupations.....	52,120	53,846	2,598	2,472	4.7	4.4
Management, business, and financial operations occupations.....	21,605	23,068	1,037	921	4.6	3.8
Professional and related occupations.....	30,515	30,778	1,561	1,551	4.9	4.8
Service occupations.....	25,432	26,476	2,710	2,634	9.6	9.0
Sales and office occupations.....	32,874	32,642	3,340	2,887	9.2	8.1
Sales and related occupations.....	15,322	15,322	1,639	1,397	9.7	8.4
Office and administrative support occupations.....	17,552	17,320	1,701	1,490	8.8	7.9
Natural resources, construction, and maintenance occupations.....	13,068	12,978	1,872	1,447	12.5	10.0
Farming, fishing, and forestry occupations.....	1,092	1,144	139	132	11.3	10.3
Construction and extraction occupations.....	7,194	7,020	1,312	1,046	15.4	13.0
Installation, maintenance, and repair occupations.....	4,782	4,815	422	269	8.1	5.3
Production, transportation, and material moving occupations.....	16,635	17,259	2,136	1,883	11.4	9.8
Production occupations.....	8,023	8,419	1,096	871	12.0	9.4
Transportation and material moving occupations.....	8,612	8,840	1,040	1,012	10.8	10.3

¹ Persons with no previous work experience and persons whose last job was in the U.S. Armed Forces are included in the unemployed total.

NOTE: Updated population controls are introduced annually with the release of January data.

HOUSEHOLD DATA

Table A-14. Unemployed persons by industry and class of worker, not seasonally adjusted

Industry and class of worker	Number of unemployed persons (in thousands)		Unemployment rates	
	June 2011	June 2012	June 2011	June 2012
Total, 16 years and over ¹	14,409	13,184	9.3	8.4
Nonagricultural private wage and salary workers.....	10,733	9,626	9.0	7.9
Mining, quarrying, and oil and gas extraction.....	46	52	5.2	4.8
Construction.....	1,317	1,039	15.6	12.8
Manufacturing.....	1,405	1,056	9.2	6.9
Durable goods.....	952	654	9.7	6.8
Nondurable goods.....	453	402	8.3	7.0
Wholesale and retail trade.....	1,995	1,709	9.7	8.3
Transportation and utilities.....	504	437	8.2	7.2
Information.....	245	201	7.9	7.1
Financial activities.....	607	510	6.8	5.6
Professional and business services.....	1,349	1,356	9.1	8.9
Education and health services.....	1,228	1,368	5.8	6.2
Leisure and hospitality.....	1,483	1,407	10.9	9.8
Other services.....	553	492	8.7	7.5
Agriculture and related private wage and salary workers.....	144	133	9.0	8.4
Government workers.....	1,232	1,079	5.8	5.2
Self-employed workers, unincorporated, and unpaid family workers.....	589	524	5.7	5.0

¹ Persons with no previous work experience and persons whose last job was in the U.S. Armed Forces are included in the unemployed total.

NOTE: Updated population controls are introduced annually with the release of January data.

HOUSEHOLD DATA

Table A-15. Alternative measures of labor underutilization

[Percent]

Measure	Not seasonally adjusted			Seasonally adjusted					
	June 2011	May 2012	June 2012	June 2011	Feb. 2012	Mar. 2012	Apr. 2012	May 2012	June 2012
U-1 Persons unemployed 15 weeks or longer, as a percent of the civilian labor force.....	5.1	4.7	4.5	5.3	4.8	4.6	4.5	4.6	4.6
U-2 Job losers and persons who completed temporary jobs, as a percent of the civilian labor force.....	5.1	4.3	4.4	5.4	4.7	4.5	4.4	4.5	4.6
U-3 Total unemployed, as a percent of the civilian labor force (official unemployment rate).....	9.3	7.9	8.4	9.1	8.3	8.2	8.1	8.2	8.2
U-4 Total unemployed plus discouraged workers, as a percent of the civilian labor force plus discouraged workers.....	9.9	8.4	8.9	9.7	8.9	8.7	8.7	8.7	8.7
U-5 Total unemployed, plus discouraged workers, plus all other persons marginally attached to the labor force, as a percent of the civilian labor force plus all persons marginally attached to the labor force.....	10.9	9.3	9.9	10.7	9.8	9.6	9.5	9.6	9.7
U-6 Total unemployed, plus all persons marginally attached to the labor force, plus total employed part time for economic reasons, as a percent of the civilian labor force plus all persons marginally attached to the labor force.....	16.4	14.3	15.1	16.2	14.9	14.5	14.5	14.8	14.9

NOTE: Persons marginally attached to the labor force are those who currently are neither working nor looking for work but indicate that they want and are available for a job and have looked for work sometime in the past 12 months. Discouraged workers, a subset of the marginally attached, have given a job-market related reason for not currently looking for work. Persons employed part time for economic reasons are those who want and are available for full-time work but have had to settle for a part-time schedule. Updated population controls are introduced annually with the release of January data.

HOUSEHOLD DATA

Table A-16. Persons not in the labor force and multiple jobholders by sex, not seasonally adjusted

[Numbers in thousands]

Category	Total		Men		Women	
	June 2011	June 2012	June 2011	June 2012	June 2011	June 2012
NOT IN THE LABOR FORCE						
Total not in the labor force.....	84,951	86,770	33,493	33,909	51,458	52,862
Persons who currently want a job.....	7,124	7,157	3,333	3,212	3,791	3,945
Marginally attached to the labor force ¹	2,680	2,483	1,391	1,226	1,289	1,256
Discouraged workers ²	982	821	549	511	432	310
Other persons marginally attached to the labor force ³	1,698	1,662	841	716	857	946
MULTIPLE JOBHOLDERS						
Total multiple jobholders ⁴	6,861	6,707	3,400	3,293	3,461	3,414
Percent of total employed.....	4.9	4.7	4.5	4.3	5.3	5.1
Primary job full time, secondary job part time.....	3,584	3,489	1,976	1,898	1,608	1,590
Primary and secondary jobs both part time.....	1,781	1,812	625	640	1,156	1,173
Primary and secondary jobs both full time.....	291	259	160	163	131	96
Hours vary on primary or secondary job.....	1,154	1,114	619	579	534	535

1 Data refer to persons who want a job, have searched for work during the prior 12 months, and were available to take a job during the reference week, but had not looked for work in the past 4 weeks.

2 Includes those who did not actively look for work in the prior 4 weeks for reasons such as thinks no work available, could not find work, lacks schooling or training, employer thinks too young or old, and other types of discrimination.

3 Includes those who did not actively look for work in the prior 4 weeks for such reasons as school or family responsibilities, ill health, and transportation problems, as well as a number for whom reason for nonparticipation was not determined.

4 Includes a small number of persons who work part time on their primary job and full time on their secondary job(s), not shown separately.

NOTE: Updated population controls are introduced annually with the release of January data.

ESTABLISHMENT DATA

Table B-1. Employees on nonfarm payrolls by industry sector and selected industry detail

[In thousands]

Industry	Not seasonally adjusted				Seasonally adjusted				Change from: May2012 - June2012 ^P
	June 2011	Apr. 2012	May 2012 ^P	June 2012 ^P	June 2011	Apr. 2012	May 2012 ^P	June 2012 ^P	
Total nonfarm.....	132,340	132,945	133,725	134,116	131,311	132,931	133,008	133,088	80
Total private.....	110,231	110,540	111,365	112,180	109,199	110,956	111,061	111,145	84
Goods-producing.....	18,304	18,089	18,322	18,607	18,019	18,322	18,301	18,314	13
Mining and logging.....	794	827	841	852	786	838	843	843	0
Logging.....	47.4	44.4	48.4	49.9	47.9	47.8	50.1	50.1	0.0
Mining.....	746.9	782.9	792.4	802.1	738.2	789.7	792.4	792.9	0.5
Oil and gas extraction.....	175.4	191.7	193.7	198.1	173.4	193.4	193.8	195.4	1.6
Mining, except oil and gas ¹	225.4	216.7	222.4	222.6	218.7	219.2	218.9	216.2	-2.7
Coal mining.....	87.8	85.0	85.3	84.1	87.5	85.1	85.1	83.9	-1.2
Support activities for mining.....	346.1	374.5	376.3	381.4	346.1	377.1	379.7	381.3	1.6
Construction.....	5,704	5,389	5,550	5,717	5,495	5,542	5,507	5,509	2
Construction of buildings.....	1,249.6	1,187.3	1,218.4	1,249.1	1,214.4	1,223.5	1,220.4	1,213.5	-6.9
Residential building.....	583.0	545.5	561.8	577.6	561.2	564.7	561.9	556.0	-5.9
Nonresidential building.....	666.6	641.8	656.6	671.5	653.2	658.8	658.5	657.5	-1.0
Heavy and civil engineering construction.....	879.0	816.1	851.0	876.8	827.7	840.2	827.9	825.9	-2.0
Specialty trade contractors.....	3,574.9	3,385.1	3,481.0	3,591.0	3,453.2	3,477.9	3,459.1	3,469.1	10.0
Residential specialty trade contractors.....	1,508.4	1,425.0	1,469.9	1,521.4	1,448.5	1,465.2	1,455.0	1,462.6	7.6
Nonresidential specialty trade contractors.....	2,066.5	1,960.1	2,011.1	2,069.6	2,004.7	2,012.7	2,004.1	2,006.5	2.4
Manufacturing.....	11,806	11,873	11,931	12,038	11,738	11,942	11,951	11,962	11
Durable goods.....	7,323	7,440	7,474	7,538	7,281	7,466	7,477	7,491	14
Wood products.....	340.5	329.0	331.9	335.8	333.3	331.5	329.9	328.8	-1.1
Nonmetallic mineral products.....	378.4	363.7	368.1	372.2	367.4	367.8	364.1	361.6	-2.5
Primary metals.....	391.5	405.8	408.7	410.9	390.7	406.0	409.0	409.8	0.8
Fabricated metal products.....	1,355.3	1,389.7	1,399.1	1,413.0	1,350.0	1,396.1	1,401.5	1,406.3	4.8
Machinery.....	1,061.2	1,098.9	1,103.3	1,114.0	1,056.8	1,102.3	1,105.6	1,109.0	3.4
Computer and electronic products ¹	1,110.9	1,105.9	1,109.1	1,116.7	1,107.4	1,109.9	1,112.0	1,112.0	0.0
Computer and peripheral equipment.....	158.7	164.0	163.9	165.9	159.2	164.4	164.7	165.7	1.0
Communications equipment.....	116.8	109.0	109.1	109.7	115.9	109.6	109.4	108.8	-0.6
Semiconductors and electronic components.....	383.9	386.4	387.6	389.9	382.8	387.1	389.0	388.4	-0.6
Electronic instruments.....	405.9	401.8	403.1	406.2	404.4	403.4	403.6	404.4	0.8
Electrical equipment and appliances.....	368.1	371.5	373.2	375.6	367.2	373.5	374.0	374.3	0.3
Transportation equipment ¹	1,383.2	1,448.1	1,450.3	1,463.1	1,377.9	1,447.7	1,451.3	1,458.4	7.1
Motor vehicles and parts ²	717.4	765.8	769.0	779.3	712.5	763.5	767.9	774.6	6.7
Furniture and related products.....	357.1	350.8	352.0	352.1	354.0	352.2	349.7	348.3	-1.4
Miscellaneous manufacturing.....	576.4	576.3	578.0	584.4	576.1	579.3	580.3	582.9	2.6
Nondurable goods.....	4,483	4,433	4,457	4,500	4,457	4,476	4,474	4,471	-3
Food manufacturing.....	1,459.3	1,428.0	1,441.1	1,464.6	1,455.9	1,457.7	1,458.6	1,459.0	0.4
Beverages and tobacco products.....	193.5	192.6	197.2	201.6	189.1	196.8	197.8	196.9	-0.9
Textile mills.....	122.2	119.9	119.9	120.0	121.2	119.8	119.2	119.1	-0.1
Textile product mills.....	119.7	114.1	114.6	115.6	118.3	114.3	114.1	114.0	-0.1
Apparel.....	153.0	150.6	150.7	148.6	151.9	150.0	149.6	147.3	-2.3
Leather and allied products.....	29.3	30.2	29.7	29.6	29.2	30.2	29.8	29.6	-0.2
Paper and paper products.....	392.5	390.7	391.5	394.8	390.9	393.1	392.8	393.0	0.2
Printing and related support activities.....	471.7	455.7	457.6	458.8	469.4	457.5	457.4	456.2	-1.2
Petroleum and coal products.....	115.0	113.7	114.9	115.2	111.8	114.2	113.6	112.6	-1.0
Chemicals.....	790.7	795.4	795.3	801.9	787.0	797.6	797.0	797.9	0.9
Plastics and rubber products.....	636.2	642.4	644.5	649.0	632.3	644.7	643.8	644.9	1.1
Private service-providing.....	91,927	92,451	93,043	93,573	91,180	92,634	92,760	92,831	71
Trade, transportation, and utilities.....	25,098	25,060	25,271	25,383	25,027	25,262	25,311	25,314	3
Wholesale trade.....	5,567.7	5,592.9	5,633.0	5,668.6	5,531.0	5,608.7	5,623.2	5,632.0	8.8
Durable goods.....	2,772.8	2,772.3	2,790.7	2,811.8	2,757.4	2,783.4	2,790.9	2,796.6	5.7
Nondurable goods.....	1,953.8	1,966.9	1,985.0	1,993.0	1,936.8	1,969.4	1,975.6	1,976.1	0.5
Electronic markets and agents and brokers.....	841.1	853.7	857.3	863.8	836.8	855.9	856.7	859.3	2.6
Retail trade.....	14,656.2	14,592.7	14,701.7	14,755.6	14,641.9	14,750.5	14,752.6	14,747.2	-5.4
Motor vehicle and parts dealers ¹	1,702.6	1,717.3	1,723.5	1,732.8	1,685.3	1,716.7	1,716.5	1,716.8	0.3
Automobile dealers.....	1,060.6	1,079.4	1,083.6	1,088.7	1,055.5	1,080.3	1,082.8	1,083.7	0.9
Furniture and home furnishings stores.....	434.3	441.1	443.8	443.2	441.3	448.8	451.0	450.7	-0.3

See footnotes at end of table.

ESTABLISHMENT DATA

Table B-1. Employees on nonfarm payrolls by industry sector and selected industry detail

— Continued

[In thousands]

Industry	Not seasonally adjusted				Seasonally adjusted				Change from: May2012 - June2012 ^P
	June 2011	Apr. 2012	May 2012 ^P	June 2012 ^P	June 2011	Apr. 2012	May 2012 ^P	June 2012 ^P	
Retail trade - Continued									
Electronics and appliance stores.....	525.3	503.1	496.3	495.1	531.5	509.1	504.7	501.7	-3.0
Building material and garden supply stores...	1,199.6	1,205.0	1,224.9	1,212.1	1,142.1	1,159.4	1,153.2	1,153.0	-0.2
Food and beverage stores.....	2,850.5	2,837.7	2,873.3	2,898.2	2,828.6	2,863.8	2,872.6	2,875.2	2.6
Health and personal care stores.....	977.0	989.1	991.4	998.0	975.7	997.3	993.0	996.6	3.6
Gasoline stations.....	840.6	824.8	833.1	839.4	831.9	830.5	830.0	830.3	0.3
Clothing and clothing accessories stores.....	1,329.4	1,321.0	1,327.1	1,345.9	1,351.5	1,363.5	1,368.8	1,369.8	1.0
Sporting goods, hobby, book, and music stores.....	558.5	551.6	559.7	565.8	577.1	572.1	576.2	579.6	3.4
General merchandise stores ¹	3,046.3	3,021.4	3,023.9	3,019.4	3,075.7	3,081.0	3,072.3	3,060.8	-11.5
Department stores.....	1,511.0	1,497.9	1,492.8	1,480.5	1,541.6	1,541.0	1,533.9	1,521.0	-12.9
Miscellaneous store retailers.....	773.1	758.4	780.9	779.5	768.6	771.5	777.3	773.5	-3.8
Nonstore retailers.....	419.0	422.2	423.8	426.2	432.6	436.8	437.0	439.2	2.2
Transportation and warehousing.....	4,316.1	4,313.2	4,373.8	4,392.2	4,298.5	4,341.0	4,373.3	4,371.1	-2.2
Air transportation.....	460.3	456.9	458.2	461.6	457.5	458.8	457.9	458.5	0.6
Rail transportation.....	230.8	234.5	234.9	234.6	230.3	234.4	235.0	234.0	-1.0
Water transportation.....	63.2	65.2	66.1	68.3	61.6	66.3	66.0	66.6	0.6
Truck transportation.....	1,319.5	1,316.1	1,337.0	1,360.7	1,302.4	1,334.2	1,340.7	1,342.7	2.0
Transit and ground passenger transportation.....	437.8	429.4	451.2	423.4	439.5	416.2	433.6	426.2	-7.4
Pipeline transportation.....	43.1	43.6	43.7	44.3	43.1	43.9	43.9	44.2	0.3
Scenic and sightseeing transportation.....	36.4	29.2	32.7	39.0	29.6	32.4	30.6	31.7	1.1
Support activities for transportation.....	565.4	581.7	583.5	586.3	563.5	581.6	584.3	583.9	-0.4
Couriers and messengers.....	518.8	510.7	516.1	520.9	525.8	520.9	525.8	526.8	1.0
Warehousing and storage.....	640.8	645.9	650.4	653.1	645.2	652.3	655.5	656.5	1.0
Utilities.....	558.4	561.1	562.0	566.8	555.6	561.8	561.6	563.5	1.9
Information.....	2,684	2,626	2,644	2,645	2,669	2,632	2,636	2,628	-8
Publishing industries, except Internet.....	750.4	737.9	735.6	739.5	749.2	740.0	739.1	738.2	-0.9
Motion picture and sound recording industries.....	370.2	364.7	390.4	384.2	359.7	367.3	377.0	372.8	-4.2
Broadcasting, except Internet.....	281.8	281.8	281.3	281.5	281.8	282.0	282.7	281.2	-1.5
Telecommunications.....	875.9	833.5	826.6	827.5	876.3	834.6	829.2	827.1	-2.1
Data processing, hosting and related services.....	244.1	242.6	243.2	242.8	242.5	241.0	241.3	241.3	0.0
Other information services.....	161.7	165.8	167.0	169.5	159.3	166.7	167.1	167.3	0.2
Financial activities.....	7,725	7,694	7,723	7,785	7,680	7,723	7,732	7,737	5
Finance and insurance.....	5,767.3	5,756.2	5,758.8	5,789.6	5,754.6	5,768.7	5,769.7	5,774.8	5.1
Monetary authorities - central bank.....	18.8	18.9	17.8	18.0	18.8	18.8	17.9	18.1	0.2
Credit intermediation and related activities ¹	2,563.1	2,576.9	2,574.6	2,590.0	2,559.8	2,581.6	2,580.6	2,585.3	4.7
Depository credit intermediation ¹	1,743.5	1,747.4	1,745.9	1,750.6	1,740.2	1,749.9	1,748.1	1,746.9	-1.2
Commercial banking.....	1,317.8	1,320.1	1,317.8	1,319.2	1,315.4	1,321.6	1,319.8	1,316.9	-2.9
Securities, commodity contracts, investments.....	811.4	797.9	797.7	807.0	810.0	801.2	801.8	805.5	3.7
Insurance carriers and related activities.....	2,288.8	2,278.2	2,284.2	2,289.7	2,281.0	2,282.2	2,284.7	2,281.2	-3.5
Funds, trusts, and other financial vehicles.....	85.2	84.3	84.5	84.9	85.0	84.9	84.7	84.7	0.0
Real estate and rental and leasing.....	1,958.0	1,937.4	1,964.3	1,995.8	1,925.7	1,954.2	1,962.0	1,961.8	-0.2
Real estate.....	1,419.9	1,409.7	1,420.9	1,440.6	1,403.8	1,418.1	1,420.4	1,423.0	2.6
Rental and leasing services.....	514.1	504.3	520.0	531.8	497.9	512.6	518.1	515.3	-2.8
Lessors of nonfinancial intangible assets.....	24.0	23.4	23.4	23.4	24.0	23.5	23.5	23.5	0.0
Professional and business services.....	17,437	17,794	17,840	18,031	17,303	17,824	17,848	17,895	47
Professional and technical services ¹	7,674.5	7,988.2	7,850.2	7,916.0	7,698.1	7,914.9	7,922.2	7,940.4	18.2
Legal services.....	1,123.7	1,113.9	1,115.9	1,132.3	1,111.2	1,119.0	1,119.5	1,119.7	0.2
Accounting and bookkeeping services.....	869.9	1,074.4	903.8	888.2	931.0	967.2	959.0	954.8	-4.2
Architectural and engineering services.....	1,306.8	1,312.5	1,321.8	1,340.2	1,292.8	1,323.3	1,323.7	1,325.2	1.5
Computer systems design and related services.....	1,528.6	1,578.6	1,584.1	1,594.1	1,530.1	1,581.0	1,588.2	1,594.8	6.6
Management and technical consulting services.....	1,070.4	1,119.3	1,124.2	1,140.0	1,070.2	1,125.7	1,129.4	1,138.3	8.9
Management of companies and enterprises.....	1,924.9	1,932.5	1,939.8	1,960.0	1,914.5	1,942.3	1,944.3	1,948.9	4.6
Administrative and waste services.....	7,837.4	7,873.7	8,049.6	8,155.1	7,690.7	7,967.1	7,981.5	8,005.9	24.4

See footnotes at end of table.

ESTABLISHMENT DATA

Table B-1. Employees on nonfarm payrolls by industry sector and selected industry detail

— Continued

[In thousands]

Industry	Not seasonally adjusted				Seasonally adjusted				Change from: May2012 - June2012 ^p
	June 2011	Apr. 2012	May 2012 ^p	June 2012 ^p	June 2011	Apr. 2012	May 2012 ^p	June 2012 ^p	
Administrative and waste services - Continued									
Administrative and support services ¹	7,468.3	7,505.4	7,678.9	7,776.5	7,326.9	7,595.1	7,610.3	7,632.9	22.6
Employment services ¹	2,946.1	3,074.1	3,169.1	3,214.2	2,922.9	3,150.2	3,166.0	3,188.5	22.5
Temporary help services	2,302.5	2,424.3	2,509.3	2,549.2	2,288.2	2,489.8	2,508.4	2,533.6	25.2
Business support services	802.5	809.2	809.2	809.7	812.2	813.7	817.8	819.2	1.4
Services to buildings and dwellings	1,889.7	1,796.5	1,863.3	1,897.4	1,772.5	1,797.7	1,788.5	1,782.2	-6.3
Waste management and remediation services	369.1	368.3	370.7	378.6	363.8	372.0	371.2	373.0	1.8
Education and health services	19,655	20,415	20,359	20,089	19,848	20,247	20,291	20,293	2
Educational services	3,020.6	3,481.3	3,371.1	3,101.8	3,225.8	3,315.2	3,323.1	3,313.5	-9.6
Health care and social assistance	16,634.0	16,934.0	16,987.8	16,987.3	16,622.4	16,931.4	16,967.9	16,979.3	11.4
Health care ³	14,051.1	14,285.9	14,326.0	14,376.3	14,029.8	14,308.0	14,341.3	14,354.3	13.0
Ambulatory health care services ¹	6,137.9	6,300.0	6,331.1	6,342.2	6,134.7	6,308.1	6,333.7	6,338.5	4.8
Offices of physicians	2,348.9	2,407.0	2,423.2	2,425.5	2,348.4	2,415.3	2,428.5	2,425.1	-3.4
Outpatient care centers	621.3	653.2	656.5	661.1	621.2	652.1	656.3	660.3	4.0
Home health care services	1,136.3	1,181.6	1,189.2	1,191.1	1,136.7	1,181.0	1,186.9	1,190.5	3.6
Hospitals	4,730.6	4,799.4	4,803.0	4,825.3	4,720.4	4,809.4	4,812.1	4,815.8	3.7
Nursing and residential care facilities ¹	3,182.6	3,186.5	3,191.9	3,208.8	3,174.7	3,190.5	3,195.5	3,200.0	4.5
Nursing care facilities	1,678.3	1,658.4	1,659.3	1,666.4	1,674.3	1,661.3	1,661.0	1,662.3	1.3
Social assistance ¹	2,582.9	2,648.1	2,661.8	2,611.0	2,592.6	2,623.4	2,626.6	2,625.0	-1.6
Child day care services	823.8	860.0	866.2	811.6	840.8	836.7	839.5	831.7	-7.8
Leisure and hospitality	13,921	13,509	13,824	14,198	13,315	13,587	13,580	13,593	13
Arts, entertainment, and recreation	2,163.7	1,878.9	1,983.7	2,158.9	1,910.9	1,925.8	1,912.7	1,911.3	-1.4
Performing arts and spectator sports	413.5	413.7	425.0	419.3	391.8	406.2	403.2	399.1	-4.1
Museums, historical sites, and similar institutions	145.1	131.4	137.1	148.0	131.6	134.3	132.5	134.4	1.9
Amusements, gambling, and recreation	1,605.1	1,333.8	1,421.6	1,591.6	1,387.5	1,385.3	1,377.0	1,377.8	0.8
Accommodation and food services	11,756.8	11,630.0	11,840.3	12,038.6	11,404.1	11,661.2	11,667.1	11,681.3	14.2
Accommodation	1,899.7	1,761.7	1,814.6	1,910.8	1,807.6	1,814.4	1,816.1	1,815.2	-0.9
Food services and drinking places	9,857.1	9,868.3	10,025.7	10,127.8	9,596.5	9,846.8	9,851.0	9,866.1	15.1
Other services	5,407	5,353	5,382	5,442	5,338	5,359	5,362	5,371	9
Repair and maintenance	1,173.1	1,160.7	1,166.3	1,169.8	1,158.9	1,157.2	1,157.1	1,156.1	-1.0
Personal and laundry services	1,301.5	1,295.7	1,302.7	1,312.3	1,285.4	1,292.3	1,289.2	1,295.4	6.2
Membership associations and organizations	2,932.3	2,896.6	2,912.9	2,960.0	2,894.0	2,909.8	2,915.7	2,919.2	3.5
Government	22,109	22,405	22,360	21,936	22,112	21,975	21,947	21,943	-4
Federal	2,874.0	2,823.0	2,818.0	2,820.0	2,858.0	2,821.0	2,813.0	2,806.0	-7.0
Federal, except U.S. Postal Service	2,244.5	2,201.3	2,205.4	2,209.0	2,224.9	2,202.9	2,197.4	2,191.2	-6.2
U.S. Postal Service	629.0	622.1	612.2	610.8	633.0	618.2	615.2	614.3	-0.9
State government	4,854.0	5,225.0	5,095.0	4,833.0	5,081.0	5,076.0	5,061.0	5,060.0	-1.0
State government education	2,129.5	2,570.4	2,437.3	2,159.4	2,377.1	2,418.9	2,408.2	2,408.2	0.0
State government, excluding education	2,724.0	2,654.9	2,657.7	2,673.1	2,704.2	2,657.0	2,652.8	2,652.0	-0.8
Local government	14,381.0	14,357.0	14,447.0	14,283.0	14,173.0	14,078.0	14,073.0	14,077.0	4.0
Local government education	7,942.9	8,187.9	8,204.0	7,836.0	7,903.1	7,825.1	7,815.2	7,801.0	-14.2
Local government, excluding education	6,437.6	6,168.9	6,242.5	6,447.4	6,270.2	6,252.9	6,257.8	6,275.9	18.1

1 Includes other industries, not shown separately.

2 Includes motor vehicles, motor vehicle bodies and trailers, and motor vehicle parts.

3 Includes ambulatory health care services, hospitals, and nursing and residential care facilities.

p Preliminary

ESTABLISHMENT DATA

Table B-2. Average weekly hours and overtime of all employees on private nonfarm payrolls by industry sector, seasonally adjusted

Industry	June 2011	Apr. 2012	May 2012 ^p	June 2012 ^p
AVERAGE WEEKLY HOURS				
Total private.....	34.4	34.5	34.4	34.5
Goods-producing.....	39.9	40.3	40.1	40.2
Mining and logging.....	44.6	44.0	43.7	44.0
Construction.....	38.1	38.8	38.5	38.5
Manufacturing.....	40.4	40.8	40.6	40.7
Durable goods.....	40.7	41.2	41.0	41.1
Nondurable goods.....	39.8	40.2	40.0	40.1
Private service-providing.....	33.3	33.3	33.3	33.3
Trade, transportation, and utilities.....	34.6	34.6	34.5	34.6
Wholesale trade.....	38.7	38.7	38.7	38.8
Retail trade.....	31.6	31.7	31.6	31.7
Transportation and warehousing.....	38.7	38.2	38.2	38.2
Utilities.....	41.8	41.8	41.6	41.6
Information.....	36.6	36.6	36.5	36.5
Financial activities.....	37.2	37.2	37.2	37.1
Professional and business services.....	35.7	35.9	35.8	36.0
Education and health services.....	32.9	32.9	32.9	32.9
Leisure and hospitality.....	25.9	26.1	26.1	26.1
Other services.....	31.9	31.7	31.6	31.6
AVERAGE OVERTIME HOURS				
Manufacturing.....	3.1	3.3	3.3	3.3
Durable goods.....	3.1	3.3	3.3	3.3
Nondurable goods.....	3.2	3.3	3.2	3.2

p Preliminary

ESTABLISHMENT DATA

Table B-3. Average hourly and weekly earnings of all employees on private nonfarm payrolls by industry sector, seasonally adjusted

Industry	Average hourly earnings				Average weekly earnings			
	June 2011	Apr. 2012	May 2012 ^p	June 2012 ^p	June 2011	Apr. 2012	May 2012 ^p	June 2012 ^p
Total private.....	\$23.05	\$23.40	\$23.44	\$23.50	\$ 792.92	\$ 807.30	\$ 806.34	\$ 810.75
Goods-producing.....	24.39	24.68	24.65	24.71	973.16	994.60	988.47	993.34
Mining and logging.....	27.80	28.75	28.73	28.76	1,239.88	1,265.00	1,255.50	1,265.44
Construction.....	25.39	25.67	25.72	25.75	967.36	996.00	990.22	991.38
Manufacturing.....	23.69	23.93	23.87	23.95	957.08	976.34	969.12	974.77
Durable goods.....	25.22	25.32	25.22	25.30	1,026.45	1,043.18	1,034.02	1,039.83
Nondurable goods.....	21.13	21.56	21.55	21.62	840.97	866.71	862.00	866.96
Private service-providing.....	22.73	23.10	23.15	23.21	756.91	769.23	770.90	772.89
Trade, transportation, and utilities.....	20.04	20.35	20.40	20.48	693.38	704.11	703.80	708.61
Wholesale trade.....	26.39	26.67	26.75	26.86	1,021.29	1,032.13	1,035.23	1,042.17
Retail trade.....	15.84	16.16	16.18	16.27	500.54	512.27	511.29	515.76
Transportation and warehousing.....	21.63	21.99	22.02	22.01	837.08	840.02	841.16	840.78
Utilities.....	33.83	33.85	33.84	33.94	1,414.09	1,414.93	1,407.74	1,411.90
Information.....	31.52	31.72	31.72	31.74	1,153.63	1,160.95	1,157.78	1,158.51
Financial activities.....	27.80	28.85	29.03	29.11	1,034.16	1,073.22	1,079.92	1,079.98
Professional and business services.....	27.75	28.00	28.07	28.08	990.68	1,005.20	1,004.91	1,010.88
Education and health services.....	23.64	24.11	24.15	24.22	777.76	793.22	794.54	796.84
Leisure and hospitality.....	13.23	13.35	13.32	13.37	342.66	348.44	347.65	348.96
Other services.....	20.47	20.54	20.60	20.64	652.99	651.12	650.96	652.22

p Preliminary

ESTABLISHMENT DATA

Table B-4. Indexes of aggregate weekly hours and payrolls for all employees on private nonfarm payrolls by industry sector, seasonally adjusted

[2007=100]

Industry	Index of aggregate weekly hours ¹					Index of aggregate weekly payrolls ²				
	June 2011	Apr. 2012	May 2012 ^p	June 2012 ^p	Percent change from: May 2012 - June 2012 ^p	June 2011	Apr. 2012	May 2012 ^p	June 2012 ^p	Percent change from: May 2012 - June 2012 ^p
Total private.....	94.1	95.9	95.7	96.1	0.4	103.5	107.0	107.0	107.7	0.7
Goods-producing.....	81.9	84.1	83.6	83.9	0.4	90.3	93.8	93.2	93.7	0.5
Mining and logging.....	110.2	115.9	115.8	116.6	0.7	123.0	133.7	133.5	134.6	0.8
Construction.....	72.2	74.1	73.1	73.1	0.0	79.6	82.7	81.7	81.8	0.1
Manufacturing.....	85.3	87.7	87.3	87.6	0.3	94.0	97.5	96.9	97.6	0.7
Durable goods.....	83.4	86.6	86.3	86.7	0.5	93.5	97.4	96.7	97.4	0.7
Nondurable goods.....	88.5	89.8	89.3	89.5	0.2	94.9	98.3	97.7	98.2	0.5
Private service-providing.....	97.5	99.1	99.2	99.3	0.1	107.4	110.9	111.3	111.6	0.3
Trade, transportation, and utilities.....	94.2	95.1	95.0	95.3	0.3	101.6	104.1	104.3	105.0	0.7
Wholesale trade.....	93.4	94.7	94.9	95.3	0.4	102.9	105.4	106.0	106.9	0.8
Retail trade.....	94.0	95.0	94.7	95.0	0.3	98.4	101.5	101.3	102.1	0.8
Transportation and warehousing.....	95.2	94.9	95.6	95.6	0.0	104.5	105.9	106.8	106.7	-0.1
Utilities.....	100.5	101.6	101.1	101.4	0.3	112.3	113.6	113.0	113.7	0.6
Information.....	89.2	88.0	87.9	87.6	-0.3	100.1	99.4	99.2	99.0	-0.2
Financial activities.....	94.1	94.7	94.8	94.6	-0.2	102.2	106.6	107.4	107.5	0.1
Professional and business services.....	97.2	100.6	100.5	101.3	0.8	109.2	114.2	114.3	115.3	0.9
Education and health services.....	106.3	108.4	108.7	108.7	0.0	117.7	122.5	123.0	123.3	0.2
Leisure and hospitality.....	98.4	101.2	101.1	101.2	0.1	105.0	109.0	108.7	109.2	0.5
Other services.....	94.3	94.1	93.9	94.0	0.1	109.6	109.7	109.8	110.2	0.4

1 The indexes of aggregate weekly hours are calculated by dividing the current month's estimates of aggregate hours by the corresponding 2007 annual average aggregate hours. Aggregate hours estimates are the product of estimates of average weekly hours and employment.

2 The indexes of aggregate weekly payrolls are calculated by dividing the current month's estimates of aggregate weekly payrolls by the corresponding 2007 annual average aggregate weekly payrolls. Aggregate payrolls estimates are the product of estimates of average hourly earnings, average weekly hours, and employment.

p Preliminary

ESTABLISHMENT DATA
Table B-5. Employment of women on nonfarm payrolls by industry sector, seasonally adjusted

Industry	Women employees (in thousands)				Percent of all employees			
	June 2011	Apr. 2012	May 2012 ^p	June 2012 ^p	June 2011	Apr. 2012	May 2012 ^p	June 2012 ^p
Total nonfarm.....	64,965	65,589	65,634	65,666	49.5	49.3	49.3	49.3
Total private.....	52,340	53,033	53,104	53,153	47.9	47.8	47.8	47.8
Goods-producing.....	4,060	4,086	4,086	4,098	22.5	22.3	22.3	22.4
Mining and logging.....	105	113	112	114	13.4	13.5	13.3	13.5
Construction.....	705	708	706	709	12.8	12.8	12.8	12.9
Manufacturing.....	3,250	3,265	3,268	3,275	27.7	27.3	27.3	27.4
Durable goods.....	1,721	1,733	1,734	1,737	23.6	23.2	23.2	23.2
Nondurable goods.....	1,529	1,532	1,534	1,538	34.3	34.2	34.3	34.4
Private service-providing.....	48,280	48,947	49,018	49,055	53.0	52.8	52.8	52.8
Trade, transportation, and utilities.....	10,035	10,041	10,053	10,044	40.1	39.7	39.7	39.7
Wholesale trade.....	1,661.3	1,687.9	1,690.9	1,696.9	30.0	30.1	30.1	30.1
Retail trade.....	7,226.2	7,205.7	7,206.9	7,195.0	49.4	48.9	48.9	48.8
Transportation and warehousing.....	1,011.9	1,007.2	1,014.7	1,010.9	23.5	23.2	23.2	23.1
Utilities.....	135.8	140.0	140.1	141.0	24.4	24.9	24.9	25.0
Information.....	1,083	1,066	1,065	1,068	40.6	40.5	40.4	40.6
Financial activities.....	4,489	4,478	4,479	4,482	58.5	58.0	57.9	57.9
Professional and business services.....	7,685	7,902	7,913	7,941	44.4	44.3	44.3	44.4
Education and health services.....	15,243	15,533	15,569	15,571	76.8	76.7	76.7	76.7
Leisure and hospitality.....	6,933	7,101	7,107	7,117	52.1	52.3	52.3	52.4
Other services.....	2,812	2,826	2,832	2,832	52.7	52.7	52.8	52.7
Government.....	12,625	12,556	12,530	12,513	57.1	57.1	57.1	57.0

p Preliminary

NOTE: Data in this table have been corrected. For more information see http://www.bls.gov/bls/ceswomen_usps_correction.htm.

ESTABLISHMENT DATA

Table B-6. Employment of production and nonsupervisory employees on private nonfarm payrolls by industry sector, seasonally adjusted¹

[In thousands]

Industry	June 2011	Apr. 2012	May 2012 ^p	June 2012 ^p
Total private.....	90,023	91,675	91,737	91,770
Goods-producing.....	12,975	13,231	13,194	13,180
Mining and logging.....	591	636	637	636
Construction.....	4,154	4,181	4,138	4,124
Manufacturing.....	8,230	8,414	8,419	8,420
Durable goods.....	4,984	5,151	5,158	5,161
Nondurable goods.....	3,246	3,263	3,261	3,259
Private service-providing.....	77,048	78,444	78,543	78,590
Trade, transportation, and utilities.....	21,206	21,449	21,492	21,479
Wholesale trade.....	4,432.3	4,511.7	4,525.0	4,523.2
Retail trade.....	12,631.3	12,735.7	12,738.6	12,730.5
Transportation and warehousing.....	3,697.8	3,753.4	3,782.6	3,777.5
Utilities.....	444.1	448.0	445.9	448.0
Information.....	2,144	2,122	2,125	2,125
Financial activities.....	5,882	5,931	5,942	5,953
Professional and business services.....	14,227	14,703	14,727	14,769
Education and health services.....	17,380	17,757	17,793	17,794
Leisure and hospitality.....	11,742	11,998	11,981	11,979
Other services.....	4,467	4,484	4,483	4,491

¹ Data relate to production employees in mining and logging and manufacturing, construction employees in construction, and nonsupervisory employees in the service-providing industries. These groups account for approximately four-fifths of the total employment on private nonfarm payrolls.

^p Preliminary

ESTABLISHMENT DATA

Table B-7. Average weekly hours and overtime of production and nonsupervisory employees on private nonfarm payrolls by industry sector, seasonally adjusted¹

Industry	June 2011	Apr. 2012	May 2012 ^p	June 2012 ^p
AVERAGE WEEKLY HOURS				
Total private.....	33.7	33.7	33.7	33.8
Goods-producing.....	40.8	41.2	41.0	41.1
Mining and logging.....	47.2	47.3	46.5	46.7
Construction.....	38.9	39.3	39.0	39.0
Manufacturing.....	41.4	41.7	41.6	41.7
Durable goods.....	41.8	42.2	42.0	42.1
Nondurable goods.....	40.7	41.0	40.9	41.0
Private service-providing.....	32.4	32.4	32.5	32.5
Trade, transportation, and utilities.....	33.7	33.8	33.8	33.8
Wholesale trade.....	38.6	38.6	38.6	38.7
Retail trade.....	30.5	30.6	30.7	30.6
Transportation and warehousing.....	37.9	37.8	37.9	38.0
Utilities.....	42.0	41.0	41.2	40.8
Information.....	36.3	35.9	35.8	35.9
Financial activities.....	36.4	36.6	36.6	36.8
Professional and business services.....	35.3	35.2	35.2	35.3
Education and health services.....	32.3	32.3	32.3	32.4
Leisure and hospitality.....	24.8	24.9	25.0	25.1
Other services.....	30.9	30.6	30.5	30.5
AVERAGE OVERTIME HOURS				
Manufacturing.....	4.0	4.2	4.2	4.3
Durable goods.....	4.2	4.4	4.4	4.5
Nondurable goods.....	3.8	3.9	3.9	3.9

¹ Data relate to production employees in mining and logging and manufacturing, construction employees in construction, and nonsupervisory employees in the service-providing industries. These groups account for approximately four-fifths of the total employment on private nonfarm payrolls.

p Preliminary

ESTABLISHMENT DATA

Table B-8. Average hourly and weekly earnings of production and nonsupervisory employees on private nonfarm payrolls by industry sector, seasonally adjusted¹

Industry	Average hourly earnings				Average weekly earnings			
	June 2011	Apr. 2012	May 2012 ^p	June 2012 ^p	June 2011	Apr. 2012	May 2012 ^p	June 2012 ^p
Total private.....	\$19.45	\$19.71	\$19.69	\$19.74	\$ 655.47	\$ 664.23	\$ 663.55	\$ 667.21
Goods-producing.....	20.63	20.94	20.90	20.94	841.70	862.73	856.90	860.63
Mining and logging.....	24.43	25.90	25.76	25.85	1,153.10	1,225.07	1,197.84	1,207.20
Construction.....	23.58	23.89	23.94	23.94	917.26	938.88	933.66	933.66
Manufacturing.....	18.92	19.13	19.08	19.14	783.29	797.72	793.73	798.14
Durable goods.....	20.10	20.22	20.17	20.24	840.18	853.28	847.14	852.10
Nondurable goods.....	17.06	17.37	17.32	17.36	694.34	712.17	708.39	711.76
Private service-providing.....	19.20	19.45	19.44	19.49	622.08	630.18	631.80	633.43
Trade, transportation, and utilities.....	17.13	17.39	17.39	17.47	577.28	587.78	587.78	590.49
Wholesale trade.....	22.00	22.16	22.15	22.24	849.20	855.38	854.99	860.69
Retail trade.....	13.46	13.77	13.81	13.87	410.53	421.36	423.97	424.42
Transportation and warehousing.....	19.47	19.66	19.56	19.63	737.91	743.15	741.32	745.94
Utilities.....	30.87	31.53	31.48	31.60	1,296.54	1,292.73	1,296.98	1,289.28
Information.....	26.42	26.92	26.76	26.74	959.05	966.43	958.01	959.97
Financial activities.....	21.76	22.55	22.61	22.69	792.06	825.33	827.53	834.99
Professional and business services.....	23.17	23.24	23.22	23.25	817.90	818.05	817.34	820.73
Education and health services.....	20.76	21.04	21.01	21.06	670.55	679.59	678.62	682.34
Leisure and hospitality.....	11.47	11.62	11.60	11.61	284.46	289.34	290.00	291.41
Other services.....	17.34	17.38	17.40	17.42	535.81	531.83	530.70	531.31

¹ Data relate to production employees in mining and logging and manufacturing, construction employees in construction, and nonsupervisory employees in the service-providing industries. These groups account for approximately four-fifths of the total employment on private nonfarm payrolls.

^p Preliminary

ESTABLISHMENT DATA

Table B-9. Indexes of aggregate weekly hours and payrolls for production and nonsupervisory employees on private nonfarm payrolls by industry sector, seasonally adjusted¹

[2002=100]

Industry	Index of aggregate weekly hours ²					Index of aggregate weekly payrolls ³				
	June 2011	Apr. 2012	May 2012 ^p	June 2012 ^p	Percent change from: May 2012 - June 2012 ^p	June 2011	Apr. 2012	May 2012 ^p	June 2012 ^p	Percent change from: May 2012 - June 2012 ^p
Total private.....	101.4	103.2	103.3	103.6	0.3	131.7	135.9	135.9	136.7	0.6
Goods-producing.....	80.9	83.3	82.7	82.8	0.1	102.2	106.8	105.8	106.2	0.4
Mining and logging.....	148.2	159.9	157.4	157.8	0.3	210.6	240.8	235.8	237.3	0.6
Construction.....	80.9	82.3	80.8	80.5	-0.4	103.0	106.1	104.5	104.1	-0.4
Manufacturing.....	78.2	80.5	80.4	80.6	0.2	96.8	100.8	100.3	100.9	0.6
Durable goods.....	78.3	81.7	81.4	81.7	0.4	98.3	103.1	102.5	103.2	0.7
Nondurable goods.....	77.8	78.8	78.6	78.7	0.1	93.8	96.8	96.2	96.6	0.4
Private service-providing.....	106.7	108.7	109.1	109.2	0.1	140.5	144.9	145.5	145.9	0.3
Trade, transportation, and utilities.....	99.6	101.1	101.3	101.2	-0.1	121.7	125.4	125.6	126.1	0.4
Wholesale trade.....	100.8	102.6	102.9	103.1	0.2	130.6	133.9	134.2	135.1	0.7
Retail trade.....	97.5	98.6	99.0	98.6	-0.4	112.5	116.4	117.2	117.2	0.0
Transportation and warehousing.....	105.5	106.8	107.9	108.1	0.2	130.3	133.2	133.9	134.6	0.5
Utilities.....	95.4	93.9	94.0	93.5	-0.5	122.9	123.6	123.4	123.3	-0.1
Information.....	88.8	86.9	86.8	87.1	0.3	116.2	115.9	115.0	115.3	0.3
Financial activities.....	102.5	103.9	104.1	104.8	0.7	137.8	144.8	145.5	147.1	1.1
Professional and business services.....	112.6	116.0	116.2	116.8	0.5	155.2	160.4	160.5	161.7	0.7
Education and health services.....	121.1	123.7	124.0	124.4	0.3	165.3	171.1	171.2	172.2	0.6
Leisure and hospitality.....	106.7	109.4	109.7	110.1	0.4	138.9	144.4	144.5	145.2	0.5
Other services.....	96.8	96.2	95.9	96.1	0.2	122.3	121.9	121.6	121.9	0.2

1 Data relate to production employees in mining and logging and manufacturing, construction employees in construction, and nonsupervisory employees in the service-providing industries. These groups account for approximately four-fifths of the total employment on private nonfarm payrolls.

2 The indexes of aggregate weekly hours are calculated by dividing the current month's estimates of aggregate hours by the corresponding 2002 annual average aggregate hours. Aggregate hours estimates are the product of estimates of average weekly hours and employment.

3 The indexes of aggregate weekly payrolls are calculated by dividing the current month's estimates of aggregate weekly payrolls by the corresponding 2002 annual average aggregate weekly payrolls. Aggregate payrolls estimates are the product of estimates of average hourly earnings, average weekly hours, and employment.

p Preliminary