

Advance Report of Final Natality Statistics, 1981

Births and birth rates

There were 3,629,238 registered live births in the United States during 1981, less than 1 percent more than the 3,612,258 births recorded in 1980. This was the smallest annual increase

in the number of births since 1978. Provisional data for 1982 indicate an increase of about 2 percent over the final figure for 1981 (figure 1).

Declines of 1 percent between 1980 and 1981 were observed for other measures of fertility (table 1). The birth rate

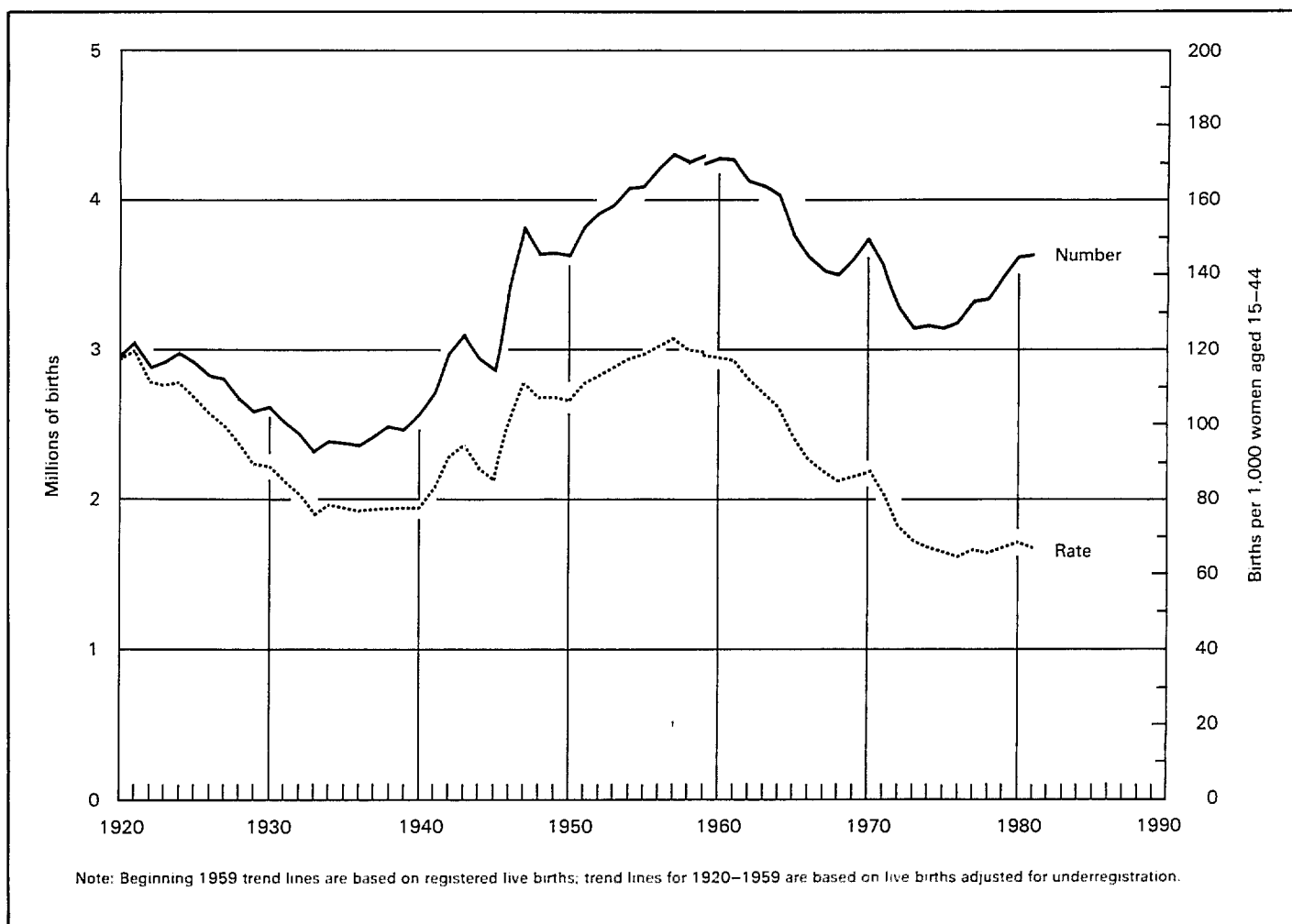


Figure 1. Live births and fertility rates: United States, 1920-81

was 15.8 live births per 1,000 total population in 1981, about 1 percent below the rate for 1980 (15.9). Provisional statistics for 1982 indicate a small increase of about 1 percent in the birth rate.

The fertility rate for 1981 was 67.4 live births per 1,000 women aged 15–44 years, 1 percent below the 1980 rate of 68.4. A very slight increase in the fertility rate, less than 1 percent, is indicated for 1982, according to provisional data. The birth and fertility rates declined between 1980 and 1981 because the increase in the number of births was more than offset by the increases in the estimated populations used as denominators for the rates.

Birth rates for women of all ages except 10–14, 35–39, and 45–49 years declined between 1980 and 1981, with the declines ranging from 1 percent for women aged 15–19, 25–29, and 30–34 years to 3 percent for women aged 20–24 and 40–44 years. (See figure 2 for birth rates by age of mother and tables 2, 3, and 4 for births and birth rates by age of mother.) Women aged 35–39 years were the only age group to show an increase (1 percent) in fertility between 1980 and 1981. Rates for women 10–14 and 45–49 years were unchanged. The year 1981 marks the first time that the rate for women aged 30–34 years has declined since 1975. Between 1975 and 1980 the rate for these women had increased 18 percent.

The general decline in fertility according to age of mother is reflected in similar declines in birth rates by live-birth order (figure 3 and table 5). Declines were observed for first through fourth and sixth and seventh order births. Rates fell by 1 percent for second and third births, by 2 percent for first births, by 3 percent for fourth births, and by 10 percent for sixth and seventh order births. Rates for fifth and eighth and higher order births were unchanged. The rates for first through third order births had increased annually between 1978 and 1980.

The overall decline of 2 percent in the first birth rate tends to obscure widely divergent trends in these rates by age of mother. The first birth rate declined by almost 3 percent for women aged 20–24 years and increased for women 25–44 years of age with larger increases as age of mother advanced: 2 percent for women aged 25–29 years, 4 percent for women aged 30–34 years, 8 percent for women aged 35–39 years, and 33 percent for women aged 40–44 years. The increases in first birth rates for women in their thirties reflect a continuation of a pattern observed since 1972;¹ however, the 4-percent rise in the rate for women aged 30–34 years is the smallest increase measured since 1975.

It is evident that the pattern of delayed childbearing observed in the United States since the early 1970's has continued, although at a somewhat slower rate of increase between 1980 and 1981. Between 1972 and 1981 the first birth rate for women in their early thirties almost doubled, increasing from 7.0 first births per 1,000 women aged 30–34 years to 13.3, while the rate for women aged 25–29 years rose by 33 percent, from 29.2 to 38.8.

Increases in birth rates for second order births between 1980 and 1981 were confined to women aged 30–34 (1 percent)

and 35–39 years (7 percent). Second order birth rates for women in their thirties also increased substantially between 1972 and 1981, by 55 percent for women 30–34 years, and by 45 percent for women aged 35–39 years.

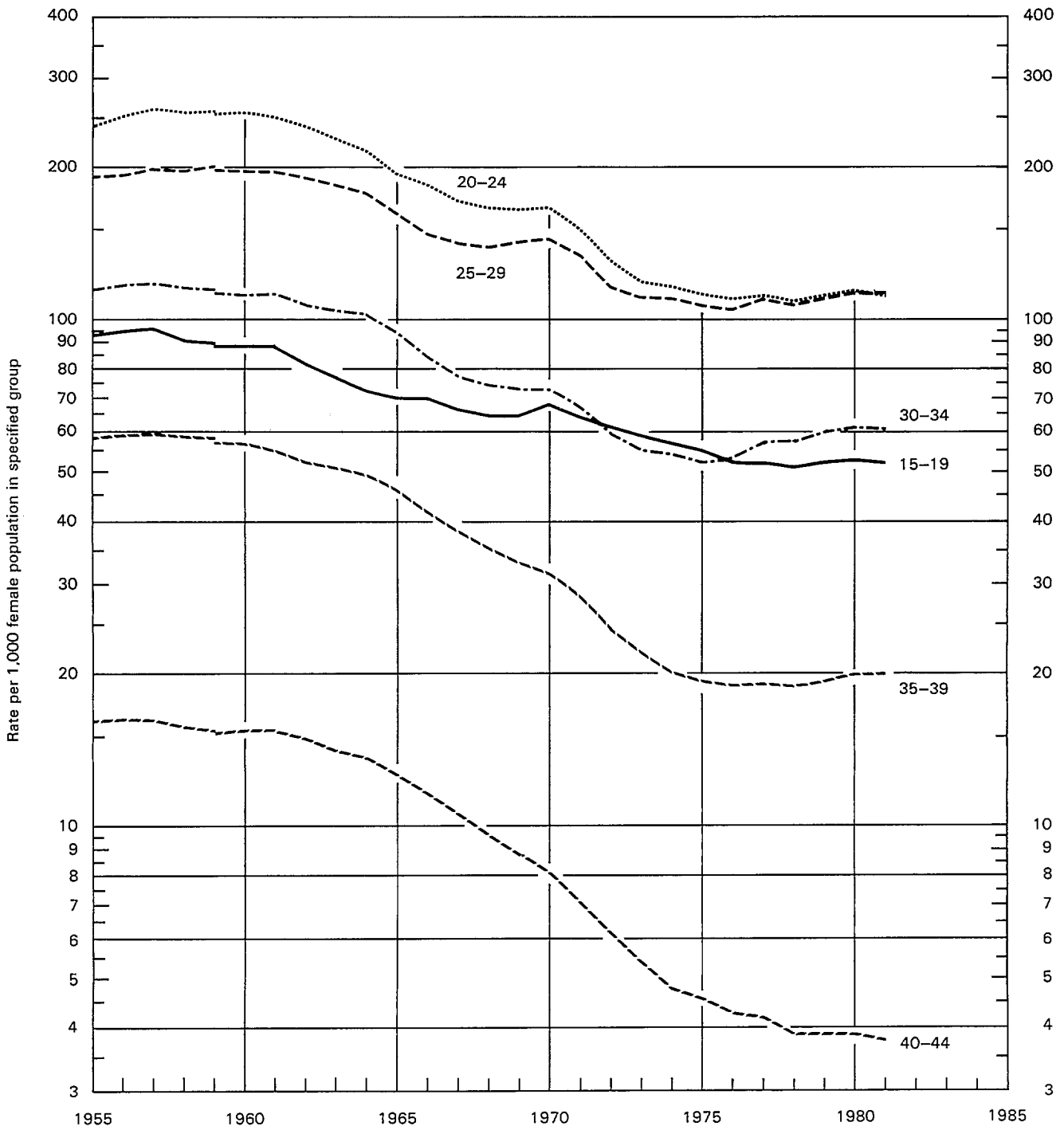
Fertility rates for white and black women declined between 1980 and 1981. The rate for white women was 63.9 births per 1,000 women aged 15–44 years, 1 percent below the 1980 rate of 64.7. The fertility rate for black women was 85.4, 3 percent under the rate for 1980, 88.1. Birth rates declined by 3 percent or less for white women in age groups 15–34 years. A 1-percent increase was observed in the rate for white women aged 35–39 years, while the rates for women 40–44 and 45–49 years were unchanged. Birth rates for black women declined at every age except 45–49, which was unchanged, with the declines ranging from 1 percent for ages 25–29 and 35–39 years to 5 percent for young teenagers 10–14 years old.

First birth rates for white women declined by 3 percent for women 15–24 years. Rates for women 25–39 years increased by 2 to 8 percent, while rates for women 40–49 years were unchanged. Among black women, the only first order rates to increase were for women 25–29 (3 percent) and 40–44 years (33 percent).

Increases in both first and second order birth rates for women aged 30–39 years were relatively small between 1980 and 1981 in comparison with the trends during the 1970's. This suggests that the tendency for women to begin motherhood at later ages is perhaps not as strong now as it was during the late 1970's, although women who have been delaying childbearing may be postponing their first births until their mid or late thirties rather than until their late twenties and early thirties as was true just a few years ago. Further delay of motherhood by these women may reduce the number of children they ultimately have and may result in a greater level of unintended childlessness as these women learn that they have impairments in their ability to bear children that are difficult or impossible to correct.²

The total fertility rate indicates the number of births that 1,000 women would have if they experienced throughout their childbearing years the set of age-specific birth rates observed in a given calendar year. It shows the implications of current levels of fertility for completed family size. If the age-specific birth rates of 1981 were to prevail over the entire childbearing period for a given group of 1,000 women, they would bear 1,815.0 children. This is 14 percent below the level considered necessary for a given generation to exactly replace itself in the population (2,110). The total fertility rate for white women, 1,726.0, is well below replacement level, while the rate for black women, 2,206.0, is slightly above the replacement level.

In recent years there has been a sizable increase in births to women of certain specified racial groups, reflecting the substantial increase in population due to immigration among these groups. For example, the number of Chinese births increased by 9 percent between 1980 and 1981, from 12,792 to 13,900. Between 1978 and 1981, the number of Chinese births rose by 24 percent. Similarly, the number of "Other Asian or Pacific Islander" births, comprising principally births to Asian Indian,



Note: Beginning 1959 trend lines are based on registered live births; trend lines for 1955-1959 are based on live births adjusted for underregistration.

Figure 2. Birth rates by age of mother: United States, 1955-81

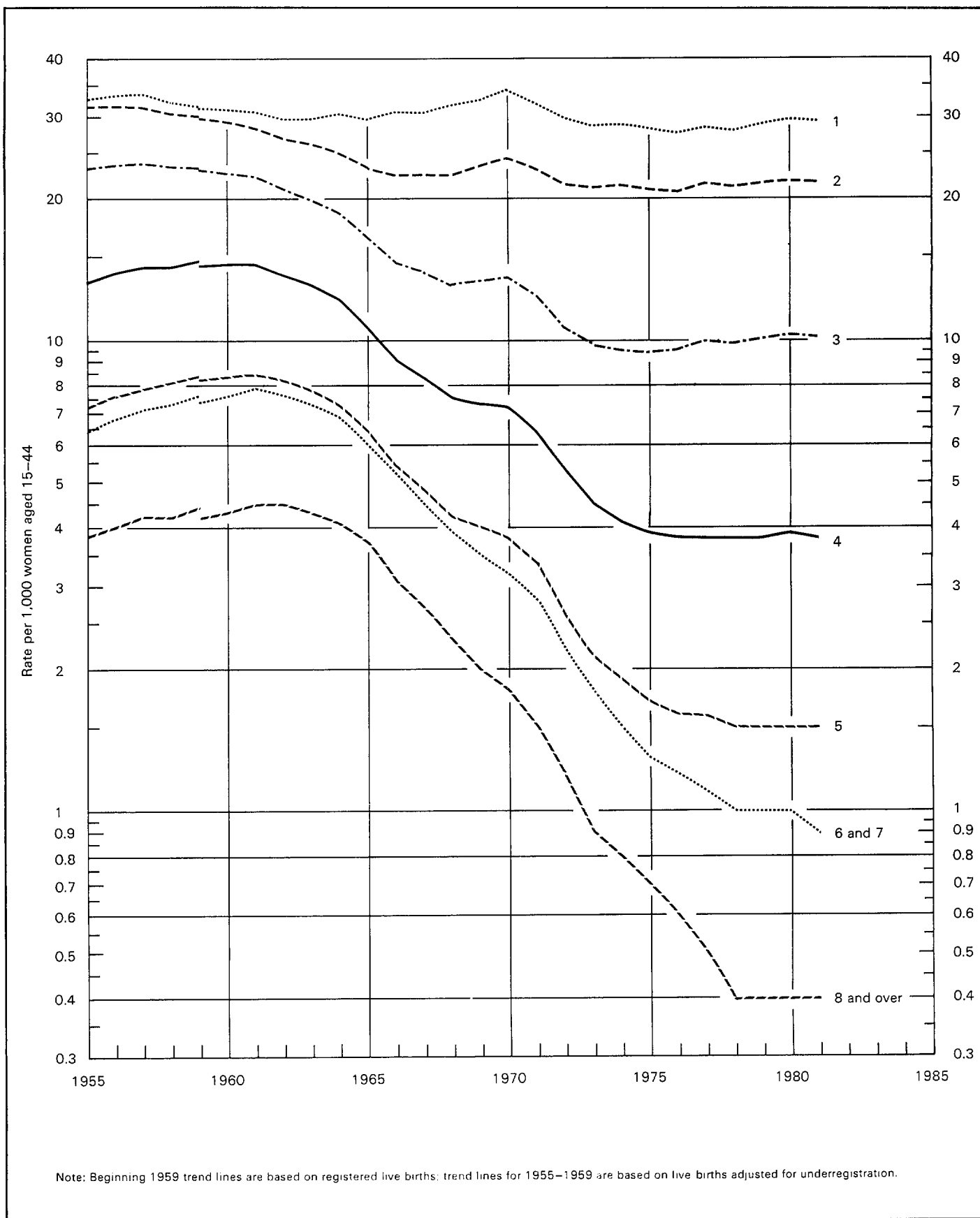


Figure 3. Birth rates by live-birth order: United States, 1955-81

Cambodian, Korean, Laotian, Thai, and Vietnamese persons (but excluding Japanese, Filipino, and Hawaiian births), has increased considerably in recent years. These births numbered 47,457 in 1981, 21 percent more than in 1980 (39,224) and 93 percent more than in 1978 (24,597).

The total number of births increased in six geographic divisions and declined in three (table 6). The increases were 1 percent in the Middle Atlantic and South Atlantic Divisions; 2 percent in the New England, West South Central, and Mountain Divisions; and 4 percent in the Pacific Division. The number of births declined by 1–3 percent in the East North Central, West North Central, and East South Central Divisions. Increases and decreases were evenly divided among the 50 States and the District of Columbia. The number of births rose in 26 States and fell in 24 States and the District of Columbia.

Birth rates increased in only three divisions: New England and Middle Atlantic (1 percent each) and Pacific (2 percent). Rates declined by 1–4 percent in the remaining six divisions. The largest increases in the number of births and the birth rate were in the Pacific Division, while the greatest declines were observed in the East South Central Division. Declines in birth rates by State exceeded increases. Rates declined by 1–5 percent for 29 States and the District of Columbia, increased by 1–3 percent for 17 States, and were unchanged for Arizona, Maine, New Mexico, and Vermont.

Sex ratio

The sex ratio at birth in 1981 was 1,052 male births per 1,000 female births, virtually unchanged from the 1980 ratio of 1,053 (table 7). The ratio has been 1,052 or 1,053 since 1976.

The sex ratios for white and black births have similarly remained within a narrow range. Since 1976 the ratio for white births has been 1,057–1,058, and for black births, 1,027–1,029. Ratios for other specified race groups have traditionally been more variable from year to year.

Month of birth

The monthly occurrence of births has shown a consistent pattern for many years, with the peak months generally August or September (table 8). Removal of the seasonal component from the monthly birth and fertility rates facilitates the observation of the underlying trends. Seasonally adjusted fertility rates in 1981 showed no consistent pattern; rates were highest in April, June, and July. Provisional data for 1982 again exhibit no particular pattern, except that the rates in the last quarter of the year were generally higher than those in the first quarter.

Place of delivery and attendant at birth

The overwhelming majority, 99.0 percent, of babies born in 1981 were delivered in hospitals, as has been true for many years. Black infants were slightly more likely than white infants to be delivered in hospitals (99.2 percent compared with

98.9 percent) (table 9). Physicians attended 97.2 percent of all hospital deliveries in 1981 compared with 97.9 percent in 1980. The proportion of midwife-attended births in hospitals increased from 1.4 percent in 1980 to 1.5 percent in 1981. Comparisons between 1980 and 1981 are affected by the relatively large increase in the number of births for which the attendant at birth was not specified (table 10).

The trend toward more births delivered by midwives both in and out of hospitals continued in 1981. Although the numbers of such births are still relatively small, they have increased substantially in recent years. In 1981, 55,537 babies delivered in hospitals were attended by midwives compared with 51,576 in 1980 and 44,496 in 1979. Midwife-attended deliveries occurring out of hospitals numbered 12,754 in 1981 compared with 11,093 in 1980 and 10,363 in 1979 (table 10).

There were increases for both white and black babies attended by midwives in 1981, but the increase was much greater for white (11 percent) than for black births (6 percent). Among white births, the increase was substantial in midwife-attended, out-of-hospital deliveries—up 17 percent—compared with a 10-percent increase in midwife-delivered births in hospitals. Among black infants, there was an increase only in midwife deliveries occurring in hospitals (6 percent).

Age of father

The birth rate for men in 1981 was 56.3 live births per 1,000 men aged 15–54 years, 1 percent below the 1980 rate of 57.0 (see table 11 for basic data and table 12 for birth rates by age of father). The rates for both white and black men also declined. For white men the rate fell by 1 percent, from 52.9 in 1980 to 52.3 in 1981, while for black men the rate declined by 3 percent, from 83.8 to 81.2.

Rates declined by 1–4 percent for men in all age groups under 35 years and for ages 40–44 years. The rate for men 35–39 years increased 1 percent, while the rates for men 45–49 and 50–54 years increased 3–5 percent. The birth rate for men aged 55 years and older was unchanged. The changes by age of father were similar for white and black men through age 34, except that the declines for black men exceeded those for white men. At ages 35–49 years there was no consistent pattern in the rates by race.

Weight at birth

In 1981, as in 1980, 6.8 percent of all births were classified as being of low birth weight. Low birth weight is defined as less than 2,500 grams (5 pounds 8 ounces), in accordance with the definition established in the *International Classification of Diseases, Ninth Revision*.

The proportions of low birth weight for both white and black infants were also unchanged in 1981; the racial differential therefore remains substantial. In 1980 and 1981, 5.7 percent of white infants and 12.5 percent of black infants were of low birth weight.

Babies born to mothers aged 25–29 and 30–34 years are least likely to be of low birth weight, while infants born to teenagers and mothers aged 40 years and over are most at risk of low birth weight, continuing a pattern that has been observed for many years. In 1981, 5.8 percent of births to women 25–29 and 30–34 years were of low birth weight compared with 14.0 percent of births to girls under 15 years of age (table 13).

The median birth weight of infants born in 1981 was 3,360 grams (equivalent to approximately 7 pounds 7 ounces), unchanged from the medians for 1979 and 1980. The medians for white and black infants were the same as in 1980—3,410 grams for white births (about 7 pounds 8 ounces) and 3,170 grams for black births (7 pounds). The racial difference in birth weight of 240 grams is equivalent to about 8½ ounces.

The number and percent of low-birth-weight infants by race for each State are shown in table 14. There is considerable variation in the percent low birth weight from State to State within each racial group. Much of this variation is reduced when the States with relatively few black births are excluded from the comparison.

Multiple births

There were 71,434 live births in multiple deliveries (such as twins, triplets, and quadruplets) during 1981, an increase of 3 percent over the 69,676 plural births reported in 1980. Almost all (98 percent) of the multiple births in 1981 were live births in twin deliveries (70,049 births). The multiple birth ratio was 19.7 live births in multiple deliveries per 1,000 total live births, an increase from the 1980 ratio of 19.3. Between 1978 and 1980 the ratio had declined from 19.6 to 19.3.

Multiple birth ratios increased for both white and black births from 1980 to 1981. The ratio for black births continued to be higher than for white births, 24.7 compared with 18.8.

As in previous years, multiple birth ratios in 1981 increased as age of mother advanced, generally up through ages 35–39 years. The ratio for births to mothers aged 35–39 years was 25.5, 85 percent above the 13.8 ratio for births to teens 15–19 years old. This pattern was observed for both white and black births, but the ratio for black births was higher than for white births at every age.

Births to unmarried women

National statistics on births to unmarried women are derived from two sources. For 41 States and the District of Columbia, marital status of mother is reported directly on the birth certificate; for the remaining 9 States, which lack such an item, marital status is inferred from a comparison of the child's and parents' surnames. This procedure (described in the Technical notes) was initiated with the 1980 data year, and represents a significant departure from the method used prior to 1980 to prepare national estimates of births to unmarried women. Because data derived from the new procedure are now available for 2 years,

changes in the incidence of nonmarital childbearing between 1980 and 1981 can be described without concern for the effect of the methodological change on the statistics.

There were 686,605 births to unmarried women in 1981, a 3-percent increase over the 665,747 reported in 1980 (table 15). This was the smallest annual increase in the number of nonmarital births since 1974.

Increases occurred for births to both white and black unmarried women, but the increase was much larger for white births. There were 337,050 white births, 5 percent more than reported for 1980 (320,063), and 328,879 black births, 1 percent more than the 1980 total (325,737). These, too, were the smallest increases observed in several years, since 1974 for white births and since 1973 for black births.

The rate of childbearing by unmarried women increased by less than 1 percent between 1980 and 1981. In 1981 the nonmarital birth rate was 29.6 births per 1,000 unmarried women 15–44 years of age compared with 29.4 in 1980. Although the 1981 rate was the highest rate ever observed, the increase between 1980 and 1981 was the smallest since 1978 (table 16). The rate for women aged 20–24 years continued to be the highest age-specific rate at 40.9 in 1981, the same as in 1980. The nonmarital childbearing rate for women aged 18–19 years was nearly as high, 39.9.

Again there were differences in the trend in the rates for white and black women. The birth rate for unmarried white women increased by 3 percent, from 17.6 in 1980 to 18.2 in 1981, while the rate for black women declined by 2 percent, from 82.9 to 81.4. The continued converging trends in rates for white and black women in recent years have resulted in a sharp decline in the racial differential in nonmarital birth rates. In 1975 the rate for black women was 7 times the rate for white women. By 1981, this differential had declined to 4.

The relatively modest increases in the number of births to unmarried women between 1980 and 1981 are due both to the considerably smaller increase in the rate of childbearing by unmarried women and to the sharply reduced rate of growth in the number of unmarried women of childbearing age. Increases in age-specific nonmarital birth rates did not exceed 2 percent, while increases in the number of unmarried women were restricted to women aged 20 and older, with the largest increases (7–12 percent) measured for women 25–39 years. Women aged 25 and older typically account for a relatively small portion of all nonmarital births (25 percent in 1981). The 1-percent decline in births to unmarried teenagers is the result of a decline of 3 percent in the number of unmarried women 15–19 years old, which more than compensated for the 2-percent increase in their birth rate. By contrast, the 11-percent increase in nonmarital births to women 30–34 years of age is due to the 12-percent increase in the number of unmarried women in this age group, which occurred while their birth rate declined by 1 percent.

The ratio of births to unmarried women per 1,000 total live births was 189.2 in 1981, 3 percent higher than the ratio of 184.3 in 1980. The ratio for white births was 115.9 and for

black births, 559.5. Numbers of births to unmarried women and ratios for each State, by race, are shown in table 14.

Interval since last live birth

The date of the mother's last live birth was reported on the birth certificates of 49 States and the District of Columbia in 1981; Texas did not request this information. Intervals between successive births are calculated from the date of the last live birth and the date of the present birth. Interbirth intervals are calculated for all second and higher order births and are shown in table 17.

There was no change in 1981 in the proportion of all second and higher order births occurring at short intervals. In 1981 as in 1980, 13 percent of all births occurred within 18 months of the mother's previous live birth. Similarly, there has been little change in the proportions of births occurring within 2 or 3 years of the mother's previous live birth. In 1981, 28 percent of all second and higher order births occurred within 2 years of the previous live birth and 52 percent occurred within 3 years of the previous birth. (Births occurring at intervals of zero months, that is, the second or later born of multiple births, have been excluded from these calculations.)

Black infants continue to be more likely than white infants to be born at very short intervals. In 1981, 17 percent of black babies compared with 12 percent of white babies followed their mother's previous live birth by less than 18 months. These proportions are unchanged from 1980.

Intervals between successive births tend to be shorter for young mothers than for older mothers. For example, 58 percent of second births to mothers 18-19 years of age followed the mother's first birth by less than 24 months compared with 33 percent for mothers 20-24 years of age and 12 percent for mothers aged 35-39 years.

Educational attainment of mother and father

In 1981 as in 1980 educational attainment of parents was reported on the birth certificates of 47 States and the District of Columbia. The proportions of mothers and fathers with at least a high school diploma continued the steady increase in 1981 that has been observed annually since 1969 when this information first became available. In 1981, 77 percent of mothers and 83 percent of fathers had completed at least 12 years of schooling (table 18). Births to very well-educated parents accounted for an increasing fraction of all births in 1981: 15 percent of mothers and 23 percent of fathers had completed at least 4 years of college. During these years there has also been a steady decline in the proportion of mothers and fathers with only a grade school education or less. In 1981 just 4 percent of mothers and fathers had completed 8 or fewer years of school. The median years of school completed by mothers in 1981 was 12.6 and by fathers, 12.8.

Both white and black mothers continued to make gains in

their educational attainment in 1981, but a large racial differential still persists in the number of years of school completed. In 1981, 80 percent of white births and 65 percent of black births were to mothers who had completed high school.

Educational attainment tends to be greater as age of mother advances through ages 30-34 years (table 19). There was relatively little change between 1980 and 1981 in the median years of school completed by mother at each age, except for mothers aged 30-34 years for whom the median increased from 13.5 years to 13.8 years of school. This increase is consistent with the pattern of delayed childbearing that has been observed in recent years for older, well-educated mothers.¹

Month of pregnancy prenatal care began

There was no change in 1981 in the proportion of mothers who began prenatal care in the first trimester of pregnancy. As in 1980, 76 percent of births were to mothers whose prenatal care commenced in the first trimester. The proportion of mothers who did not begin to receive prenatal care until the third trimester (delayed care) or received no care at all stayed at 5 percent in 1981 (tables 20 and 21).

There continues to be a substantial racial differential in the receipt of prenatal care. The proportions of white and black mothers receiving early and delayed or no care changed little between 1980 and 1981. In 1981, 79 percent of white mothers began care in the first trimester and 4 percent received delayed or no care, while 62 percent of black mothers began care early and 9 percent received delayed or no care. This was the first year since 1969, when these data first became available, that the percent of black mothers beginning prenatal care in the first trimester did not increase.

Between 1980 and 1981 there were declines in the proportions of women receiving early care for all age groups from ages 15-19 through 25-29, with the declines relatively greater among teenagers 15-19 years of age. Conversely, increases in the proportions of women receiving delayed or no care were observed for women through ages 25-29, with the greatest relative increase again noted for teenagers. Mothers aged 30 years and over made gains in the proportions receiving early care.

Number of prenatal visits

The median number of visits made for prenatal care by mothers having any care was 11.4 visits in 1981 compared with the 1980 median of 11.2. The median for white mothers also increased, from 11.6 in 1980 to 11.7 in 1981, while the median for black mothers was unchanged at 10.2 visits. (Basic data are presented in table 21.) Data on the number of prenatal visits were reported in 1981 by 48 States and the District of Columbia.

The median number of prenatal visits is closely related to the trimester of pregnancy during which prenatal care began (table 21). Early care is associated with more visits than is late care. Mothers beginning care in the first trimester averaged 2½

times as many visits as mothers whose care did not commence until the third trimester, 12.2 visits compared with 4.8 visits. Between 1980 and 1981 there were slight increases in the median number of visits for both white and black mothers beginning care in each trimester, except for white mothers whose care began in the first trimester for whom there was no change.

Period of gestation

The length of gestation, measured from the first day of the mother's last normal menstrual period (LMP) to the date of birth, was reported on the birth certificates of 49 States and the District of Columbia in 1981. New Mexico did not report this information. Prior to 1981 the period of gestation was computed only when there was a valid month, day, and year of LMP. Length of gestation could not be determined for a substantial number of live births each year because the day of LMP was missing. In 1981, for example, 16 percent of the birth certificates reported the month and year of LMP but not the day. Beginning in 1981, weeks of gestation are imputed for records with missing day of LMP when there is a valid month and year reported. These records are assigned a gestational period in weeks using the reported month and year of LMP and the birth weight. A more complete discussion of this procedure and its implications are contained in a previous report.³

The effect of the imputation procedure is to increase slightly the proportion of preterm births (less than 37 weeks' gestation) and to lower the proportion of births at 39, 40, 41, and 42 weeks of gestation. This tendency is more pronounced for black than for white births, because weeks of gestation were imputed for a much larger portion of black births (22 percent) than of white births (14 percent). In 1981, 9.4 percent of all babies were born prior to 37 weeks of gestation (table 22). If only the records with a completely reported LMP date are considered, the proportion preterm was 9.0 percent. The 1980 proportion preterm was 8.9 percent; thus, most of the increase in the incidence of preterm births can be associated with the implementation of the imputation procedure.

As in prior years, black infants in 1981 were much more likely to be preterm than were white infants, 17.0 percent compared with 7.9 percent. The incidence of low birth weight is closely associated with length of gestation. Among infants born before 37 weeks of gestation, 39.8 percent weighed less than 2,500 grams (5 pounds 8 ounces) compared with just 3.2 percent of babies born at term or post term.

When the proportions of low-birth-weight infants according to length of gestation are compared for white and black births, it is evident that two different factors account for the racial differential in low birth weight. The first factor is that while among preterm births the proportions of low birth weight

were nearly the same for white and black infants, 39.2 percent for white and 41.9 percent for black infants, the proportions among term and post-term babies were substantially higher for black (6.2 percent) than for white infants (2.6 percent). The second factor is that the distribution of black births by period of gestation is relatively unfavorable with respect to low birth weight in comparison with the distribution of white births by gestation. If the distribution of black births according to length of gestation were the same as it is for white births, the proportion of low birth weight among black babies would have been 9.0 percent instead of 12.5 percent. In other words, about half of the racial differential in low birth weight can be attributed to the differences in the distribution of births by gestation. The other half is due to the much higher level of low birth weight among black than among white term and post-term births.

Apgar score

The Apgar score is a summary measure used to evaluate the newborn infant's overall physical condition at birth. The score is a composite evaluation of five factors—the infant's heart rate, respiratory effort, muscle tone, irritability, and color—each of which is assigned a value from 0 to 2. The overall score is the sum of the five values, with a score of 10 being optimum. In 1981, 46 States recorded the score at 1 minute after birth, an increase of 2 States from the 1980 reporting area; 46 States and the District of Columbia reported the 5-minute score, an increase of 3 States compared with the 1980 reporting area.

Data on Apgar scores first became available in 1978. Since then there has been a steady decline in the proportion of births with high scores of 9 or 10 at both 1 and 5 minutes after birth. In 1981, 45.1 percent of 1-minute scores and 87.6 percent of 5-minute scores were 9 or 10 (table 23). Black infants were slightly more likely than white infants to receive high scores at 1 minute, while at 5 minutes the converse was true.

Scores of 0 to 3, indicating a severely depressed status, were assigned to 2.3 percent of all babies at 1 minute and to 0.6 percent of babies at 5 minutes in 1981. These proportions were about the same as in 1980. Black infants were about twice as likely as white infants to receive scores of 0–3 at 1 and 5 minutes. A large portion of this racial differential is probably associated with the comparable racial difference in the occurrence of low birth weight, which is very closely associated with unfavorable Apgar scores.

Generally, Apgar scores tended to improve from 1 to 5 minutes after birth, except where the 1-minute scores were already optimum (table 24). Black infants with low 1-minute scores, however, were somewhat less likely than white infants to improve at 5 minutes. This probably reflects the long-term impact of their lower birth weights.

References

- ¹National Center for Health Statistics, S. J. Ventura: Trends in first births to older mothers, 1971-79. *Monthly Vital Statistics Report*. Vol. 31-No. 2 Supp. (2). DHHS Pub. No. (PHS) 82-1120. Public Health Service. Hyattsville, Md., May 1982.
- ²National Center for Health Statistics, W. D. Mosher and W. F. Pratt: Reproductive impairments among married couples, United States. *Vital and Health Statistics*. Series 23-No. 11. DHHS Pub. No. (PHS) 83-1987. Public Health Service. Washington. U.S. Government Printing Office, Dec. 1982.
- ³National Center for Health Statistics, S. Taffel, D. Johnson, and R. Heuser: A method of imputing length of gestation on birth certificates. *Vital and Health Statistics*. Series 2-No. 93. DHHS Pub. No. (PHS) 82-1367. Public Health Service. Washington. U.S. Government Printing Office, May 1982.
- ⁴National Center for Health Statistics, S. Taffel: Factors associated with low birth weight, United States, 1976. *Vital and Health Statistics*. Series 21-No. 37. DHEW Pub. No. (PHS) 80-1915. Public Health Service. Hyattsville, Md. U.S. Government Printing Office, Apr. 1980.
- ⁵National Center for Health Statistics, S. J. Ventura: Trends and differentials in births to unmarried women, United States, 1970-76. *Vital and Health Statistics*. Series 21-No. 36. DHHS Pub. No. (PHS) 80-1914. Public Health Service. Hyattsville, Md. U.S. Government Printing Office, May 1980.
- ⁶National Center for Health Statistics, E. Spratley and S. Taffel: Interval between births, United States, 1970-77. *Vital and Health Statistics*. Series 21-No. 39. DHHS Pub. No. (PHS) 81-1917. Public Health Service. Hyattsville, Md. U.S. Government Printing Office, Aug. 1981.
- ⁷National Center for Health Statistics, S. Taffel: Prenatal care, United States, 1969-75. *Vital and Health Statistics*. Series 21-No. 33. DHEW Pub. No. (PHS) 78-1911. Public Health Service. Hyattsville, Md. U.S. Government Printing Office, Sept. 1978.
- ⁸National Center for Health Statistics, L. Querec: Apgar score in the United States, 1978. *Monthly Vital Statistics Report*. Vol. 30, No. 1 Supp. DHHS Pub. No. (PHS) 81-1120. Public Health Service. Hyattsville, Md., May 1981.
- ⁹National Center for Health Statistics, S. J. Ventura and R. L. Heuser: Births of Hispanic Parentage, 1978. *Monthly Vital Statistics Report*. Vol. 29, No. 12 Supp. DHHS Pub. No. (PHS) 81-1120. Public Health Service. Hyattsville, Md., Mar. 1981.
- ¹⁰National Center for Health Statistics, S. J. Ventura: Births of Hispanic parentage, 1979. *Monthly Vital Statistics Report*. Vol. 31, No. 2 Supp. DHHS Pub. No. (PHS) 82-1120. Public Health Service. Hyattsville, Md., May 1982.
- ¹¹National Center for Health Statistics, S. J. Ventura: Births of Hispanic parentage, 1980. *Monthly Vital Statistics Report*. Vol. 32, No. 6 Supp. DHHS Pub. No. (PHS) 83-1120. Public Health Service. Hyattsville, Md., Sept. 1983.
- ¹²U.S. Bureau of the Census: Estimates of the population of the United States, by age, race, and sex, 1980 to 1982. *Current Population Reports*. Series P-25, No. 929. Washington. U.S. Government Printing Office, 1983.
- ¹³U.S. Bureau of the Census: Preliminary estimates of the population of the United States, by age, sex, and race, 1970 to 1981. *Current Population Reports*. Series P-25, No. 917. Washington. U.S. Government Printing Office, July 1982.

List of tables

1. Live births, birth rates, and fertility rates, by race of child: United States, specified years 1940-55 and each year 1960-81.....	11	14. Number and percent of births of low birth weight and number and ratio of births to unmarried women, by race of child: United States and each State, 1981	27
2. Live births by age of mother, live-birth order, and race of child: United States, 1981	12	15. Numbers, rates, and ratios of births to unmarried women, by age of mother and race of child: United States, 1981 ...	28
3. Birth rates by age of mother, live-birth order, and race of child: United States, 1981	14	16. Birth rates for unmarried women by age of mother and race of child: United States, 1970-81	29
4. Total fertility rates and birth rates by age of mother, by race of child: United States, 1970-81	15	17. Live births by interval since last live birth, live-birth order, and race of child: Total of 49 reporting States and the District of Columbia, 1981	31
5. Birth rates by live-birth order and race of child: United States, 1970-81.....	16	18. Live births by educational attainment of mother and father and race of child: Total of 47 reporting States and the District of Columbia, 1981	32
6. Live births by race of child and birth rates: United States, each division and State, 1981	17	19. Live births by educational attainment of mother, age of mother, and race of child: Total of 47 reporting States and the District of Columbia, 1981	33
7. Live births by sex and sex ratio, by race of child: United States, 1970-81	18	20. Live births by month of pregnancy prenatal care began, age of mother, and race of child: United States, 1981	34
8. Live births by race of child and observed and seasonally adjusted birth and fertility rates, by month: United States, 1981	19	21. Live births by number of prenatal visits, month of pregnancy prenatal care began, and race of child: Total of 48 reporting States and the District of Columbia, 1981	35
9. Live births by attendant and place of delivery, by race of child: United States, 1981	20	22. Live births by birth weight, period of gestation, and race of child: Total of 49 reporting States and the District of Columbia, 1981	36
10. Live births and percent distribution of live births by place of delivery and attendant, by race of child: United States, 1975-81.....	21	23. Live births by 1- and 5-minute Apgar scores, by race of child: Total of reporting States, 1981.....	37
11. Live births by age of father, age of mother, and race of child: United States, 1981	23	24. Live births by 1-minute Apgar score, 5-minute Apgar score, and race of child: Total of 46 reporting States, 1981	38
12. Birth rates by age of father and race of child: United States, 1970-81.....	24		
13. Number and percent low birth weight and live births by birth weight, by age of mother and race of child: United States, 1981	25		

Table 1. Live births, birth rates, and fertility rates, by race of child: United States, specified years 1940-55 and each year 1960-81

[Birth rates per 1,000 population in specified group. Fertility rates per 1,000 women aged 15-44 years in specified group. Population enumerated as of April 1 for census years and estimated as of July 1 for all other years. Beginning 1970 excludes births to nonresidents of the United States]

Year	Number				Birth rate				Fertility rate			
	All races	White	All other		All races	White	All other		All races	White	All other	
			Total	Black			Total	Black			Total	Black
Registered births												
1981 ¹	3,629,238	2,908,669	720,569	587,797	15.8	14.8	22.0	21.6	67.4	63.9	86.4	85.4
1980 ¹	3,612,258	2,898,732	713,526	589,616	15.9	14.9	22.5	22.1	68.4	64.7	88.6	88.1
1979 ¹	3,494,398	2,808,420	685,978	577,855	15.6	14.5	22.2	22.0	67.2	63.4	88.5	88.3
1978 ¹	3,333,279	2,681,116	652,163	551,540	15.0	14.0	21.6	21.3	65.5	61.7	87.0	86.7
1977 ¹	3,326,632	2,691,070	635,562	544,221	15.1	14.1	21.6	21.4	66.8	63.2	87.7	88.1
1976 ¹	3,167,788	2,567,614	600,174	514,479	14.6	13.6	20.8	20.5	65.0	61.5	85.8	85.8
1975 ¹	3,144,198	2,551,996	592,202	511,581	14.6	13.6	21.0	20.7	66.0	62.5	87.7	87.9
1974 ¹	3,159,958	2,575,792	584,166	507,162	14.8	13.9	21.2	20.8	67.8	64.2	89.8	89.7
1973 ¹	3,136,965	2,551,030	585,935	512,597	14.8	13.8	21.7	21.4	68.8	64.9	93.4	93.6
1972 ¹	3,258,411	2,655,558	602,853	531,329	15.6	14.5	22.8	22.5	73.1	68.9	99.5	99.9
1971 ²	3,555,970	2,919,746	636,224	564,960	17.2	16.1	24.6	24.4	81.6	77.3	109.1	109.7
1970 ²	3,731,386	3,091,264	640,122	572,362	18.4	17.4	25.1	25.3	87.9	84.1	113.0	115.4
1969 ²	3,600,206	2,993,614	606,592	543,132	17.9	16.9	24.5	24.4	86.1	82.2	111.6	112.1
1968 ²	3,501,564	2,912,224	589,340	531,152	17.6	16.6	24.2	24.2	85.2	81.3	111.9	112.7
1967 ³	3,520,959	2,922,502	598,457	543,976	17.8	16.8	25.0	25.1	87.2	82.8	117.1	118.5
1966 ²	3,606,274	2,993,230	613,044	558,244	18.4	17.4	26.1	26.2	90.8	86.2	123.5	124.7
1965 ²	3,760,358	3,123,860	636,498	581,126	19.4	18.3	27.6	27.7	96.3	91.3	131.9	133.2
1964 ²	4,027,490	3,369,160	658,330	607,556	21.1	20.0	29.2	29.5	104.7	99.8	140.0	142.6
1963 ^{2,4}	4,098,020	3,326,344	638,928	580,658	21.7	20.7	29.7	---	108.3	103.6	143.7	---
1962 ^{2,4}	4,167,362	3,394,068	641,580	584,610	22.4	21.4	30.5	---	112.0	107.5	147.8	---
1961 ²	4,268,326	3,600,864	667,462	611,072	23.3	22.2	31.6	---	117.1	112.3	153.0	---
1960 ²	4,257,850	3,600,744	657,106	602,264	23.7	22.7	32.1	31.9	118.0	113.2	153.6	153.5
Births adjusted for underregistration												
1955	4,097,000	3,485,000	613,000	---	25.0	23.8	34.5	---	118.3	113.7	154.3	---
1950	3,632,000	3,108,000	524,000	---	24.1	23.0	33.3	---	106.2	102.3	137.3	---
1945	2,858,000	2,471,000	388,000	---	20.4	19.7	26.5	---	85.9	83.4	106.0	---
1940	2,559,000	2,199,000	360,000	---	19.4	18.6	26.7	---	79.9	77.1	102.4	---

¹Based on 100 percent of births in selected States and on a 50-percent sample of births in all other States; see Technical notes.

²Based on a 50-percent sample of births.

³Based on a 20- to 50-percent sample of births.

⁴Figures by race exclude data for New Jersey.

Symbols

- Data not available
- ... Category not applicable
- Quantity zero
- 0.0 Quantity more than zero but less than 0.05
- Z Quantity more than zero but less than 500 where numbers are rounded to thousands
- * Figure does not meet standards of reliability or precision

Table 2. Live births by age of mother, live-birth order, and race of child: United States, 1981

[Based on 100 percent of births in selected States and on a 50-percent sample of births in all other States; see Technical notes. Live-birth order refers to number of children born alive to mother]

Live-birth order and race of child	Age of mother													
	All ages	Under 15 years	15-19 years						20-24 years	25-29 years	30-34 years	35-39 years	40-44 years	45-49 years
			Total	15 years	16 years	17 years	18 years	19 years						
All races														
Total	3,629,238	9,632	527,392	25,961	59,603	101,833	147,006	192,989	1,212,000	1,128,188	581,454	146,056	23,326	1,190
First child	1,553,665	9,263	407,615	24,230	53,012	84,806	111,806	133,761	600,444	388,419	125,323	20,337	2,179	85
Second child	1,159,161	233	97,585	1,374	5,481	14,455	29,067	47,208	416,033	413,010	196,531	32,855	2,816	98
Third child	544,103	11	15,503	58	394	1,528	4,397	9,126	141,298	209,710	140,104	33,859	3,517	101
Fourth child	203,795	2	1,991	2	28	115	515	1,331	36,369	73,959	64,678	23,086	3,591	119
Fifth child	78,047	-	213	-	4	9	42	158	8,722	24,356	27,451	14,102	3,071	132
Sixth child	34,237	-	28	-	-	2	7	19	1,913	8,436	12,899	8,527	2,314	120
Seventh child	16,557	-	6	-	-	-	1	5	427	2,980	6,154	5,015	1,851	124
Eighth child and over	18,889	-	19	-	-	-	12	7	229	1,611	5,257	7,504	3,865	404
Not stated	20,784	123	4,432	297	684	918	1,159	1,374	6,565	5,707	3,057	771	122	7
White														
Total	2,908,669	3,970	370,013	14,039	37,335	69,539	105,397	143,703	967,770	945,776	484,965	117,496	17,827	852
First child	1,269,993	3,871	295,955	13,417	34,216	60,089	83,733	104,500	503,807	339,660	108,027	16,914	1,692	67
Second child	944,940	66	62,605	499	2,595	8,204	18,622	32,685	331,864	353,638	167,631	26,887	2,175	74
Third child	426,406	6	7,993	16	140	682	2,132	5,023	100,219	170,027	117,470	27,827	2,781	83
Fourth child	150,415	-	765	-	6	34	188	537	21,427	54,465	52,004	18,836	2,830	88
Fifth child	54,687	-	76	-	-	1	18	57	4,410	15,910	20,692	11,069	2,423	107
Sixth child	23,244	-	12	-	-	-	3	9	800	4,925	9,159	6,469	1,791	88
Seventh child	11,084	-	2	-	-	-	1	1	164	1,607	4,152	3,704	1,373	82
Eighth child and over	12,304	-	6	-	-	-	5	1	132	799	3,295	5,149	2,666	257
Not stated	15,596	27	2,599	107	378	529	695	890	4,947	4,745	2,535	641	96	6
All other														
Total	720,569	5,662	157,379	11,922	22,268	32,294	41,609	49,286	244,230	182,412	96,489	28,560	5,499	338
First child	283,672	5,392	111,660	10,813	18,796	24,717	28,073	29,261	96,637	48,759	17,296	3,423	487	18
Second child	214,221	167	34,980	875	2,886	6,251	10,445	14,523	84,169	59,372	28,900	5,968	641	24
Third child	117,697	5	7,510	42	254	846	2,265	4,103	41,079	39,683	22,634	6,032	736	18
Fourth child	53,380	2	1,226	2	22	81	327	794	14,942	19,494	12,674	4,250	761	31
Fifth child	23,360	-	137	-	4	8	24	101	4,312	8,446	6,759	3,033	648	25
Sixth child	10,993	-	16	-	-	2	4	10	1,113	3,511	3,740	2,058	523	32
Seventh child	5,473	-	4	-	-	-	-	4	263	1,373	2,002	1,311	478	42
Eighth child and over	6,585	-	13	-	-	-	7	6	97	812	1,962	2,355	1,199	147
Not stated	5,188	96	1,833	190	306	389	464	484	1,618	962	522	130	26	1

Table 2. Live births by age of mother, live-birth order, and race of child: United States, 1981—Con.

[Based on 100 percent of births in selected States and on a 50-percent sample of births in all other States; see Technical notes. Live-birth order refers to number of children born alive to mother]

Live-birth order and race of child	All ages	Age of mother												
		Under 15 years	15–19 years						20–24 years	25–29 years	30–34 years	35–39 years	40–44 years	45–49 years
			Total	15 years	16 years	17 years	18 years	19 years						
Black														
Total	587,797	5,425	143,278	11,355	20,825	29,670	37,611	43,817	208,194	139,536	67,310	19,867	3,970	217
First child	230,190	5,168	100,977	10,292	17,514	22,527	25,021	25,623	79,616	32,152	9,989	2,000	280	8
Second child	172,274	155	32,179	835	2,746	5,876	9,664	13,058	72,148	45,305	18,513	3,542	414	18
Third child	97,478	5	7,056	42	245	814	2,140	3,815	36,224	32,830	16,817	4,041	493	12
Fourth child	44,848	2	1,181	2	22	81	318	758	13,434	16,361	10,061	3,215	575	19
Fifth child	19,629	-	134	-	4	8	24	98	3,972	7,208	5,405	2,398	499	13
Sixth child	9,085	-	16	-	-	2	4	10	1,017	3,008	2,953	1,635	432	24
Seventh child	4,471	-	4	-	-	-	-	4	253	1,176	1,620	1,044	348	26
Eighth child and over...	5,315	-	7	-	-	-	4	3	88	744	1,567	1,900	912	97
Not stated	4,507	95	1,724	184	294	362	436	448	1,442	752	385	92	17	-

Table 3. Birth rates by age of mother, live-birth order, and race of child: United States, 1981

[Based on 100 percent of births in selected States and on a 50-percent sample of births in all other States; see Technical notes. Rates are live births per 1,000 women in specified age and racial groups. Live-birth order refers to number of children born alive to mother]

Live-birth order and race of child	Age of mother										
	15-19 years										
	15-44 years ¹	10-14 years	Total	15-17 years	18-19 years	20-24 years	25-29 years	30-34 years	35-39 years	40-44 years	45-49 years
All races											
Total	67.4	1.1	52.7	32.1	81.7	111.8	112.0	61.4	20.0	3.8	0.2
First child	29.0	1.1	41.1	28.0	59.5	55.7	38.8	13.3	2.8	0.4	0.0
Second child	21.6	0.0	9.8	3.7	18.5	38.6	41.2	20.9	4.5	0.5	0.0
Third child	10.2	0.0	1.6	0.3	3.3	13.1	20.9	14.9	4.7	0.6	0.0
Fourth child	3.8	0.0	0.2	0.0	0.4	3.4	7.4	6.9	3.2	0.6	0.0
Fifth child	1.5	-	0.0	0.0	0.0	0.8	2.4	2.9	1.9	0.5	0.0
Sixth and seventh child	0.9	-	0.0	0.0	0.0	0.2	1.1	2.0	1.9	0.7	0.0
Eighth child and over	0.4	-	0.0	-	0.0	0.0	0.2	0.6	1.0	0.6	0.1
White											
Total	63.9	0.5	44.6	25.1	71.9	106.3	111.3	60.2	18.7	3.4	0.2
First child	28.1	0.5	36.0	22.5	54.7	55.6	40.2	13.5	2.7	0.3	0.0
Second child	20.9	0.0	7.6	2.4	14.9	36.6	41.8	20.9	4.3	0.4	0.0
Third child	9.4	0.0	1.0	0.2	2.1	11.1	20.1	14.7	4.5	0.5	0.0
Fourth child	3.3	-	0.1	0.0	0.2	2.4	6.4	6.5	3.0	0.5	0.0
Fifth child	1.2	-	0.0	0.0	0.0	0.5	1.9	2.6	1.8	0.5	0.0
Sixth and seventh child	0.8	-	0.0	-	0.0	0.1	0.8	1.7	1.6	0.6	0.0
Eighth child and over	0.3	-	0.0	-	0.0	0.0	0.1	0.4	0.8	0.5	0.1
All other											
Total	86.4	3.6	91.8	65.2	130.8	140.8	115.9	68.5	27.6	6.3	0.4
First child	34.3	3.5	65.9	54.0	83.4	56.1	31.1	12.3	3.3	0.6	0.0
Second child	25.9	0.1	20.6	9.9	36.3	48.8	37.9	20.6	5.8	0.7	0.0
Third child	14.2	0.0	4.4	1.1	9.3	23.8	25.3	16.2	5.9	0.8	0.0
Fourth child	6.4	0.0	0.7	0.1	1.6	8.7	12.5	9.0	4.1	0.9	0.0
Fifth child	2.8	-	0.1	0.0	0.2	2.5	5.4	4.8	2.9	0.7	0.0
Sixth and seventh child	2.0	-	0.0	0.0	0.0	0.8	3.1	4.1	3.3	1.2	0.1
Eighth child and over	0.8	-	0.0	-	0.0	0.1	0.5	1.4	2.3	1.4	0.2
Black											
Total	85.4	4.1	97.1	70.6	135.9	141.2	108.3	60.4	24.2	5.6	0.3
First child	33.8	4.0	69.3	58.2	85.5	54.4	25.1	9.0	2.4	0.4	0.0
Second child	25.2	0.1	22.1	10.9	38.3	49.3	35.4	16.7	4.3	0.6	0.0
Third child	14.3	0.0	4.8	1.3	10.0	24.7	25.6	15.2	4.9	0.7	0.0
Fourth child	6.6	0.0	0.8	0.1	1.8	9.2	12.8	9.1	3.9	0.8	0.0
Fifth child	2.9	-	0.1	0.0	0.2	2.7	5.6	4.9	2.9	0.7	0.0
Sixth and seventh child	2.0	-	0.0	0.0	0.0	0.9	3.3	4.1	3.3	1.1	0.1
Eighth child and over	0.8	-	0.0	-	0.0	0.1	0.6	1.4	2.3	1.3	0.2

¹Rates computed by relating total births, regardless of age of mother, to women aged 15-44 years.

Table 4. Total fertility rates and birth rates by age of mother, by race of child: United States, 1970-81

[Total fertility rates are sums of birth rates for 5-year age groups multiplied by 5. Birth rates are live births per 1,000 women in specified group, enumerated as of April 1 for 1970 and 1980 and estimated as of July 1 for all other years]

Year and race of child	Total fertility rate	Age of mother									
		10-14 years	15-19 years			20-24 years	25-29 years	30-34 years	35-39 years	40-44 years	45-49 years
			Total	15-17 years	18-19 years						
All races											
1981 ¹	1,815.0	1.1	52.7	32.1	81.7	111.8	112.0	61.4	20.0	3.8	0.2
1980 ¹	1,839.5	1.1	53.0	32.5	82.1	115.1	112.9	61.9	19.8	3.9	0.2
1979 ¹	1,808.0	1.2	52.3	32.3	81.3	112.8	111.4	60.3	19.5	3.9	0.2
1978 ¹	1,760.0	1.2	51.5	32.2	79.8	109.9	108.5	57.8	19.0	3.9	0.2
1977 ¹	1,789.5	1.2	52.8	33.9	80.9	112.9	111.0	56.4	19.2	4.2	0.2
1976 ¹	1,738.0	1.2	52.8	34.1	80.5	110.3	106.2	53.6	19.0	4.3	0.2
1975 ¹	1,774.0	1.3	55.6	36.1	85.0	113.0	108.2	52.3	19.5	4.6	0.3
1974 ¹	1,835.0	1.2	57.5	37.3	88.7	117.7	111.5	53.8	20.2	4.8	0.3
1973 ¹	1,879.0	1.2	59.3	38.5	91.2	119.7	112.2	55.6	22.1	5.4	0.3
1972 ¹	2,010.0	1.2	61.7	39.0	96.9	130.2	117.7	59.8	24.8	6.2	0.4
1971 ²	2,266.5	1.1	64.5	38.2	105.3	150.1	134.1	67.3	28.7	7.1	0.4
1970 ²	2,480.0	1.2	68.3	38.8	114.7	167.8	145.1	73.3	31.7	8.1	0.5
White											
1981 ¹	1,726.0	0.5	44.6	25.1	71.9	106.3	111.3	60.2	18.7	3.4	0.2
1980 ¹	1,748.5	0.6	44.7	25.2	72.1	109.5	112.4	60.4	18.5	3.4	0.2
1979 ¹	1,715.5	0.6	43.7	24.7	71.0	107.0	110.8	59.0	18.3	3.5	0.2
1978 ¹	1,667.5	0.6	42.9	24.9	69.4	104.1	107.9	56.6	17.7	3.5	0.2
1977 ¹	1,703.0	0.6	44.1	26.1	70.5	107.7	110.9	55.3	18.0	3.8	0.2
1976 ¹	1,652.0	0.6	44.1	26.3	70.2	105.3	105.9	52.6	17.8	3.9	0.2
1975 ¹	1,686.0	0.6	46.4	28.0	74.0	108.2	108.1	51.3	18.2	4.2	0.2
1974 ¹	1,748.5	0.6	47.9	28.7	77.3	113.0	111.8	52.9	18.9	4.4	0.2
1973 ¹	1,783.0	0.6	49.0	29.2	79.3	114.4	112.3	54.4	20.7	4.9	0.3
1972 ¹	1,906.5	0.5	51.0	29.3	84.3	124.8	117.4	58.4	23.3	5.6	0.3
1971 ²	2,160.5	0.5	53.6	28.5	92.3	144.9	134.0	65.4	26.9	6.4	0.4
1970 ²	2,385.0	0.5	57.4	29.2	101.5	163.4	145.9	71.9	30.0	7.5	0.4
All other											
1981 ¹	2,274.5	3.6	91.8	65.2	130.8	140.8	115.9	68.5	27.6	6.3	0.4
1980 ¹	2,323.0	3.9	94.6	68.3	133.2	145.0	115.5	70.8	27.9	6.5	0.4
1979 ¹	2,309.5	4.1	96.5	70.5	134.9	144.3	114.6	68.3	27.3	6.4	0.4
1978 ¹	2,264.5	4.0	96.0	70.4	134.4	142.1	111.9	65.2	26.9	6.4	0.4
1977 ¹	2,278.5	4.3	99.5	74.8	136.8	142.3	111.5	63.4	27.3	6.9	0.5
1976 ¹	2,222.5	4.3	99.9	75.5	137.2	138.9	107.6	59.5	26.9	6.9	0.5
1975 ¹	2,276.0	4.7	106.4	80.5	146.1	141.0	108.7	58.8	27.6	7.5	0.5
1974 ¹	2,338.5	4.6	111.3	84.9	153.1	145.5	109.5	59.9	28.8	7.6	0.5
1973 ¹	2,443.0	5.0	117.5	90.5	160.9	151.6	111.2	63.2	30.9	8.6	0.6
1972 ¹	2,627.5	4.7	123.8	93.8	173.3	163.4	119.3	68.9	34.8	9.9	0.7
1971 ²	2,919.5	4.7	128.5	94.0	185.6	184.0	134.6	79.3	40.2	11.7	0.9
1970 ²	3,066.7	4.8	133.4	95.2	195.4	196.8	140.1	82.5	42.2	12.6	0.9
Black											
1981 ¹	2,206.0	4.1	97.1	70.6	135.9	141.2	108.3	60.4	24.2	5.6	0.3
1980 ¹	2,266.0	4.3	100.0	73.6	138.8	146.3	109.1	62.9	24.5	5.8	0.3
1979 ¹	2,263.2	4.6	101.7	75.7	140.4	146.3	108.2	60.7	24.7	6.1	0.4
1978 ¹	2,218.0	4.4	100.9	75.0	139.7	143.8	105.4	58.3	24.3	6.1	0.4
1977 ¹	2,251.0	4.7	104.7	79.6	142.9	144.4	106.4	57.5	25.4	6.6	0.5
1976 ¹	2,187.0	4.7	104.9	80.3	142.5	140.5	101.6	53.6	24.8	6.8	0.5
1975 ¹	2,243.0	5.1	111.8	85.6	152.4	142.8	102.2	53.1	25.6	7.5	0.5
1974 ¹	2,298.5	5.0	116.5	90.0	158.7	146.7	102.2	54.1	27.0	7.6	0.6
1973 ¹	2,411.0	5.4	123.1	96.0	166.6	153.1	103.9	58.1	29.4	8.6	0.6
1972 ¹	2,601.0	5.1	129.8	99.5	179.5	165.0	112.4	64.0	33.4	9.8	0.7
1971 ²	2,902.0	5.1	134.5	99.4	192.6	186.6	128.0	74.8	38.9	11.6	0.9
1970 ²	3,098.7	5.2	147.7	101.4	204.9	202.7	136.3	79.6	41.9	12.5	1.0

¹Based on 100 percent of births in selected States and on a 50-percent sample of births in all other States; see Technical notes.

²Based on a 50-percent sample of births.

Table 5. Birth rates by live-birth order and race of child: United States, 1970-81

[Rates are live births per 1,000 women aged 15-44 years, enumerated as of April 1 for 1970 and 1980 and estimated as of July 1 for all other years. Figures for live-birth order not stated are distributed]

Year and race of child	Total	Live-birth order						
		1	2	3	4	5	6 and 7	8 and over
All races								
1981 ¹	67.4	29.0	21.6	10.2	3.8	1.5	0.9	0.4
1980 ¹	68.4	29.5	21.8	10.3	3.9	1.5	1.0	0.4
1979 ¹	67.2	28.6	21.6	10.1	3.8	1.5	1.0	0.4
1978 ¹	65.5	27.8	21.1	9.8	3.8	1.5	1.0	0.4
1977 ¹	66.8	28.2	21.6	10.0	3.8	1.6	1.1	0.5
1976 ¹	65.0	27.5	20.8	9.5	3.8	1.6	1.2	0.6
1975 ¹	66.0	28.1	20.9	9.4	3.9	1.7	1.3	0.7
1974 ¹	67.8	28.7	21.4	9.5	4.1	1.9	1.5	0.8
1973 ¹	68.8	28.6	21.0	9.8	4.5	2.2	1.8	0.9
1972 ¹	73.1	29.8	21.4	10.6	5.3	2.6	2.2	1.2
1971 ²	81.6	32.0	23.1	12.5	6.4	3.3	2.8	1.5
1970 ²	87.9	34.2	24.2	13.6	7.2	3.8	3.2	1.8
White								
1981 ¹	63.9	28.1	20.9	9.4	3.3	1.2	0.8	0.3
1980 ¹	64.7	28.4	21.0	9.5	3.4	1.3	0.8	0.3
1979 ¹	63.4	27.4	20.8	9.4	3.4	1.3	0.8	0.3
1978 ¹	61.7	26.6	20.2	9.2	3.3	1.3	0.8	0.3
1977 ¹	63.2	26.9	20.9	9.4	3.4	1.4	0.9	0.4
1976 ¹	61.5	26.3	20.2	8.9	3.4	1.4	1.0	0.4
1975 ¹	62.5	26.7	20.3	8.8	3.5	1.5	1.1	0.5
1974 ¹	64.2	27.2	20.8	9.0	3.8	1.7	1.2	0.6
1973 ¹	64.9	27.0	20.4	9.2	4.1	1.9	1.5	0.7
1972 ¹	68.9	28.1	20.9	10.1	4.9	2.3	1.8	0.8
1971 ²	77.3	30.5	22.5	12.0	6.0	3.0	2.3	1.0
1970 ²	84.1	32.9	23.7	13.3	6.8	3.4	2.7	1.2
All other								
1981 ¹	86.4	34.3	25.9	14.2	6.4	2.8	2.0	0.8
1980 ¹	88.6	35.6	26.2	14.4	6.5	2.9	2.1	0.9
1979 ¹	88.5	35.7	26.2	14.2	6.4	2.9	2.1	1.0
1978 ¹	87.0	35.0	25.8	13.8	6.3	2.9	2.2	1.1
1977 ¹	87.7	35.6	25.7	13.5	6.2	3.0	2.4	1.3
1976 ¹	85.8	35.2	24.7	12.8	6.0	3.0	2.5	1.5
1975 ¹	87.7	36.7	24.6	12.6	6.1	3.1	2.8	1.8
1974 ¹	89.8	37.7	24.7	12.5	6.3	3.3	3.1	2.1
1973 ¹	93.4	38.8	24.4	13.0	6.9	3.9	3.7	2.6
1972 ¹	99.5	40.6	25.0	13.7	7.7	4.6	4.6	3.4
1971 ²	109.1	41.6	26.8	15.5	9.0	5.6	5.9	4.6
1970 ²	113.0	42.4	26.9	15.9	9.7	6.1	6.7	5.3
Black								
1981 ¹	85.4	33.8	25.2	14.3	6.6	2.9	2.0	0.8
1980 ¹	88.1	35.2	25.7	14.5	6.7	3.0	2.1	0.9
1979 ¹	88.3	35.3	25.8	14.4	6.6	3.0	2.2	1.0
1978 ¹	86.7	34.6	25.4	13.9	6.5	3.0	2.3	1.1
1977 ¹	88.1	35.6	25.5	13.6	6.4	3.1	2.4	1.4
1976 ¹	85.8	35.2	24.4	12.9	6.2	3.1	2.6	1.5
1975 ¹	87.9	36.9	24.2	12.6	6.3	3.2	2.9	1.9
1974 ¹	89.7	37.7	24.2	12.6	6.5	3.4	3.3	2.2
1973 ¹	93.6	38.9	24.0	13.0	7.0	4.0	3.9	2.8
1972 ¹	99.9	40.7	24.6	13.7	7.9	4.7	4.8	3.6
1971 ²	109.7	41.7	26.6	15.5	9.2	5.7	6.2	4.8
1970 ²	115.4	43.3	27.1	16.1	10.0	6.4	7.0	5.6

¹Based on 100 percent of births in selected States and on a 50-percent sample of births in all other States; see Technical notes.

²Based on a 50-percent sample of births.

Table 6. Live births by race of child and birth rates: United States, each division and State, 1981

[By place of residence. Based on 100 percent of births in selected States and on a 50-percent sample of births in all other States; see Technical notes. Rates per 1,000 estimated population in each area]

Division and State	Number			Birth rate	Division and State	Number			Birth rate
	All races ¹	White	Black			All races ¹	White	Black	
United States	3,629,238	2,908,669	587,797	15.8	South Atlantic—Con.				
New England	164,386	149,974	11,373	13.2	West Virginia	27,842	26,692	1,020	14.3
Maine	16,525	16,196	93	14.6	North Carolina	83,774	56,770	24,763	14.1
New Hampshire	13,517	13,295	112	14.4	South Carolina	51,853	30,618	20,790	16.4
Vermont	7,952	7,892	20	15.4	Georgia	89,943	56,491	32,532	16.2
Massachusetts	74,025	67,097	5,383	12.8	Florida	138,491	101,014	35,846	13.6
Rhode Island	12,448	11,187	816	13.0	East South Central	232,109	166,297	63,989	15.7
Connecticut	39,919	34,307	4,949	12.7	Kentucky	57,243	51,391	5,368	15.6
Middle Atlantic	449,376	396,524	90,514	13.5	Tennessee	67,081	51,447	15,056	14.5
New York	242,297	183,904	50,410	13.8	Alabama	61,554	39,677	21,500	15.7
New Jersey	96,651	74,857	19,418	13.0	Mississippi	46,231	23,782	22,065	18.2
Pennsylvania	160,428	137,763	20,686	13.5	West South Central	453,360	357,307	83,461	18.6
East North Central	651,758	541,787	99,309	15.6	Arkansas	35,807	26,543	8,918	15.6
Ohio	167,055	142,325	23,053	15.5	Louisiana	82,234	50,417	30,545	19.1
Indiana	84,645	74,731	9,270	15.4	Oklahoma	53,668	42,727	5,114	17.3
Illinois	185,028	141,223	39,482	16.2	Texas	281,651	237,620	38,884	19.1
Michigan	140,693	115,683	22,696	15.3	Mountain	230,479	206,561	7,412	19.7
Wisconsin	74,337	67,825	4,808	15.7	Montana	14,316	12,680	66	18.0
West North Central	285,107	257,065	19,318	16.5	Idaho	19,623	19,016	91	20.5
Minnesota	68,662	64,203	1,622	16.7	Wyoming	10,814	10,282	106	22.1
Iowa	45,928	44,155	1,120	15.8	Colorado	52,103	47,751	2,541	17.5
Missouri	76,964	64,343	11,702	15.6	New Mexico	26,699	22,144	693	20.0
North Dakota	12,398	11,377	114	18.8	Arizona	51,478	43,513	2,227	18.4
South Dakota	12,733	10,906	97	18.5	Utah	41,343	39,439	284	27.3
Nebraska	27,176	25,293	1,311	17.2	Nevada	14,103	11,736	1,404	16.7
Kansas	41,246	36,788	3,352	17.3	Pacific	561,772	453,772	49,962	17.3
South Atlantic	550,891	379,382	162,459	14.6	Washington	69,714	61,513	2,910	16.5
Delaware	9,184	6,867	2,217	15.4	Oregon	43,022	39,878	925	16.2
Maryland	61,347	41,241	18,500	14.4	California	420,726	341,234	45,030	17.4
District of Columbia	9,201	1,541	7,567	14.5	Alaska	10,096	7,103	457	24.3
Virginia	79,256	58,148	19,224	14.6	Hawaii	18,214	4,044	640	18.6

¹Includes races other than white and black.

Table 7. Live births by sex and sex ratio, by race of child: United States, 1970-81

Year	All races			White			All other					
							Total			Black		
	Male	Female	Males per 1,000 females	Male	Female	Males per 1,000 females	Male	Female	Males per 1,000 females	Male	Female	Males per 1,000 females
1981 ¹	1,860,272	1,768,966	1,052	1,494,437	1,414,232	1,057	365,835	354,734	1,031	297,864	289,933	1,027
1980 ¹	1,852,616	1,759,642	1,053	1,490,140	1,408,592	1,058	362,476	351,050	1,033	299,033	290,583	1,029
1979 ¹	1,791,267	1,703,131	1,052	1,442,981	1,365,439	1,057	348,286	337,692	1,031	293,013	284,842	1,029
1978 ¹	1,709,394	1,623,885	1,053	1,378,222	1,302,894	1,058	331,172	320,991	1,032	279,598	271,942	1,028
1977 ¹	1,705,916	1,620,716	1,053	1,383,440	1,307,630	1,058	322,476	313,086	1,030	275,556	268,665	1,026
1976 ¹	1,624,436	1,543,352	1,053	1,319,717	1,247,897	1,058	304,719	295,455	1,031	260,661	253,818	1,027
1975 ¹	1,613,135	1,531,063	1,054	1,312,308	1,239,688	1,059	300,827	291,375	1,032	259,610	251,971	1,030
1974 ¹	1,622,114	1,537,844	1,055	1,325,019	1,250,773	1,059	297,095	287,071	1,035	257,277	249,885	1,030
1973 ¹	1,608,326	1,528,639	1,052	1,311,032	1,239,998	1,057	297,294	288,641	1,030	259,877	252,720	1,028
1972 ¹	1,669,927	1,588,484	1,051	1,364,578	1,290,980	1,057	305,349	297,504	1,026	268,842	262,487	1,024
1971 ²	1,822,910	1,733,060	1,052	1,499,958	1,419,788	1,056	322,952	313,272	1,031	286,430	278,530	1,028
1970 ²	1,915,378	1,816,008	1,055	1,590,140	1,501,124	1,059	325,238	314,884	1,033	290,508	281,854	1,031

¹Based on 100 percent of births in selected States and on a 50-percent sample of births in all other States; see Technical notes.

²Based on a 50-percent sample of births.

Table 8. Live births by race of child and observed and seasonally adjusted birth and fertility rates, by month: United States, 1981

[Based on 100 percent of births in selected States and on a 50-percent sample of births in all other States; see Technical notes. Rates on an annual basis per 1,000 population for specified month. Birth rates based on the total population. Fertility rates based on women aged 15-44 years]

Month	Number				Observed		Seasonally adjusted	
	All races	White	All other		Birth rate	Fertility rate	Birth rate	Fertility rate
			Total	Black				
Total	3,629,238	2,908,669	720,569	587,797	15.8	67.4
January	294,632	233,957	60,675	50,166	15.2	64.8	15.7	67.0
February	273,234	218,479	54,755	44,851	15.6	66.5	15.8	67.4
March	301,691	243,597	58,094	47,377	15.5	66.2	15.8	67.5
April	285,578	232,466	53,112	42,692	15.2	64.7	15.9	67.9
May	296,323	240,488	55,835	44,979	15.2	64.9	15.8	67.4
June	297,935	240,128	57,807	46,784	15.8	67.3	16.0	68.1
July	326,182	260,203	65,979	54,314	16.7	71.2	16.0	68.0
August	329,870	263,354	66,516	54,792	16.9	72.0	15.9	67.6
September	319,971	255,778	64,193	52,602	16.9	72.0	15.9	67.5
October	309,106	247,488	61,618	49,952	15.8	67.3	15.7	66.6
November	290,843	231,682	59,161	48,076	15.4	65.3	15.7	66.6
December	303,873	241,049	62,824	51,212	15.5	66.0	15.7	66.8

Table 9. Live births by attendant and place of delivery, by race of child: United States, 1981

[Based on 100 percent of births in selected States and on a 50-percent sample of births in all other States; see Technical notes]

Place of delivery and race of child	Total	Attendant			
		Physician	Midwife	Other	Unspecified
All races ¹					
Total	3,629,238	3,501,917	68,291	25,097	33,933
In hospital ²	3,591,582	3,490,919	55,537	13,303	31,823
Not in hospital	37,333	10,898	12,708	11,668	2,059
Not specified	323	100	46	126	51
White					
Total	2,908,669	2,813,428	48,596	19,452	27,193
In hospital ²	2,876,797	2,804,868	37,019	9,405	25,505
Not in hospital	31,652	8,491	11,545	9,965	1,651
Not specified	220	69	32	82	37
Black					
Total	587,797	563,797	16,095	3,375	4,530
In hospital ²	583,305	561,821	15,104	2,113	4,267
Not in hospital	4,446	1,957	987	1,253	249
Not specified	46	19	4	9	14

¹Includes races other than white and black.²Includes births occurring enroute to or on arrival at hospital.

Table 10. Live births and percent distribution of live births by place of delivery and attendant, by race of child: United States, 1975-81

[Based on 100 percent of births in selected States and on a 50-percent sample of births in all other States; see Technical notes]

Year and race		Number				
		Total	In hospital ¹			
			Physician	Midwife	Other	Unspecified
All races						
1	1981	3,629,238	3,490,919	55,537	13,303	31,823
2	1980	3,612,258	3,499,959	51,576	17,456	7,379
3	1979	3,494,398	3,393,773	44,496	11,221	10,994
4	1978	3,333,279	3,221,677	36,282	12,721	29,979
5	1977	3,326,632	3,203,242	30,635	12,531	47,065
6	1976	3,167,788	3,055,287	24,656	12,871	45,282
7	1975	3,144,198	3,026,024	19,686	7,122	64,069
White						
8	1981	2,908,669	2,804,868	37,019	9,405	25,505
9	1980	2,898,732	2,815,382	33,730	13,691	5,548
10	1979	2,808,420	2,733,403	29,086	8,380	9,157
11	1978	2,681,116	2,598,455	22,319	9,952	23,977
12	1977	2,691,070	2,600,011	17,935	9,643	38,056
13	1976	2,567,614	2,486,339	13,733	9,642	36,203
14	1975	2,551,996	2,465,957	10,076	5,342	52,392
All other						
15	1981	720,569	686,051	18,518	3,898	6,318
16	1980	713,526	684,577	17,846	3,765	1,831
17	1979	685,978	660,370	15,410	2,841	1,837
18	1978	652,163	623,222	13,963	2,769	6,002
19	1977	635,562	603,231	12,700	2,888	9,009
20	1976	600,174	568,948	10,923	3,229	9,079
21	1975	592,202	560,067	9,610	1,780	11,677
Black						
22	1981	587,797	561,821	15,104	2,113	4,267
23	1980	589,616	567,568	14,229	2,090	1,321
24	1979	577,855	557,183	13,001	1,856	1,205
25	1978	551,540	527,861	11,549	1,875	4,906
26	1977	544,221	518,069	10,295	2,105	6,802
27	1976	514,479	488,335	8,954	2,480	7,378
28	1975	511,581	484,416	7,707	1,311	9,595

¹Includes births occurring enroute to or on arrival at hospital.

²Includes births with place of delivery not stated.

Table 10. Live births and percent distribution of live births by place of delivery and attendant, by race of child: United States, 1975-81--Con.
 [Based on 100 percent of births in selected States and on a 50-percent sample of births in all other States; see Technical notes]

<i>Number—Con.</i>				<i>Percent</i>							
<i>Not in hospital²</i>				<i>Total</i>	<i>In hospital¹</i>			<i>Not in hospital²</i>			
<i>Physician</i>	<i>Midwife</i>	<i>Other</i>	<i>Unspecified</i>		<i>Physician</i>	<i>Midwife</i>	<i>Other and Unspecified</i>	<i>Physician</i>	<i>Midwife</i>	<i>Other and Unspecified</i>	
10,998	12,754	11,794	2,110	100.0	96.2	1.5	1.2	0.3	0.4	0.4	1
11,992	11,093	11,630	1,173	100.0	96.9	1.4	0.7	0.3	0.3	0.4	2
11,837	10,363	10,032	1,682	100.0	97.1	1.3	0.6	0.3	0.3	0.3	3
11,806	9,778	9,167	1,869	100.0	96.7	1.1	1.3	0.4	0.3	0.3	4
12,766	9,991	7,449	2,953	100.0	96.3	0.9	1.8	0.4	0.3	0.3	5
11,940	9,574	5,914	2,264	100.0	96.4	0.8	1.8	0.4	0.3	0.3	6
11,265	9,727	2,960	3,345	100.0	96.2	0.6	2.3	0.4	0.3	0.2	7
8,560	11,577	10,047	1,688	100.0	96.4	1.3	1.2	0.3	0.4	0.4	8
9,495	9,919	10,021	946	100.0	97.1	1.2	0.7	0.3	0.3	0.4	9
9,356	8,879	8,734	1,425	100.0	97.3	1.0	0.6	0.3	0.3	0.4	10
9,136	7,733	8,059	1,485	100.0	96.9	0.8	1.3	0.3	0.3	0.4	11
9,389	7,028	6,605	2,403	100.0	96.6	0.7	1.8	0.3	0.3	0.3	12
8,894	5,824	5,148	1,831	100.0	96.8	0.5	1.8	0.3	0.2	0.3	13
7,818	5,082	2,585	2,744	100.0	96.6	0.4	2.3	0.3	0.2	0.2	14
2,438	1,177	1,747	422	100.0	95.2	2.6	1.4	0.3	0.2	0.3	15
2,497	1,174	1,609	227	100.0	95.9	2.5	0.8	0.4	0.2	0.3	16
2,481	1,484	1,298	257	100.0	96.3	2.2	0.7	0.4	0.2	0.2	17
2,670	2,045	1,108	384	100.0	95.6	2.1	1.3	0.4	0.3	0.2	18
3,377	2,963	844	550	100.0	94.9	2.0	1.9	0.5	0.5	0.2	19
3,046	3,750	766	433	100.0	94.8	1.8	2.1	0.5	0.6	0.2	20
3,447	4,645	375	601	100.0	94.6	1.6	2.3	0.6	0.8	0.2	21
1,976	991	1,262	263	100.0	95.6	2.6	1.1	0.3	0.2	0.3	22
2,062	1,001	1,170	175	100.0	96.3	2.4	0.6	0.3	0.2	0.2	23
2,099	1,356	954	201	100.0	96.4	2.2	0.5	0.4	0.2	0.2	24
2,325	1,924	825	275	100.0	95.7	2.1	1.2	0.4	0.3	0.2	25
3,044	2,883	578	445	100.0	95.2	1.9	1.6	0.6	0.5	0.2	26
2,728	3,675	550	379	100.0	94.9	1.7	1.9	0.5	0.7	0.2	27
3,161	4,602	281	508	100.0	94.7	1.5	2.1	0.6	0.9	0.2	28

Table 11. Live births by age of father, age of mother, and race of child: United States, 1981

[Based on 100 percent of births in selected States, and on a 50-percent sample of births in all other States; see Technical notes]

Age of mother and race of child	Total	Age of father										Not stated
		Under 15 years	15-19 years	20-24 years	25-29 years	30-34 years	35-39 years	40-44 years	45-49 years	50-54 years	55 years and over	
All races¹												
All ages	3,629,238	198	129,138	784,786	1,082,598	767,995	286,333	92,504	30,592	11,459	6,697	436,938
Under 15 years	9,332	60	2,108	704	106	38	10	3	4	2	2	6,595
15-19 years	527,392	105	104,491	199,051	38,541	8,614	2,379	888	313	176	113	172,721
20-24 years	1,212,000	7	20,756	506,384	404,314	92,062	22,175	6,635	2,332	926	617	155,792
25-29 years	1,128,188	19	1,514	68,751	566,964	334,147	65,829	16,933	5,564	2,124	1,240	65,103
30-34 years	581,454	7	211	8,517	65,769	307,894	129,459	29,553	8,566	3,414	1,821	26,243
35-39 years	146,056	-	51	1,216	6,313	23,760	63,024	29,649	8,501	3,069	1,937	8,536
40-44 years	23,326	-	4	162	571	1,446	3,396	8,695	4,842	1,523	854	1,833
45-49 years	1,190	-	3	1	20	34	61	148	470	225	113	115
White												
All ages	2,908,669	95	102,247	661,852	935,106	657,545	237,436	72,917	23,158	8,469	4,600	205,244
Under 15 years	3,970	9	1,095	521	72	26	8	3	4	1	2	2,229
15-19 years	370,013	64	82,153	164,132	31,254	6,881	1,878	681	228	131	72	82,539
20-24 years	967,770	4	17,489	431,878	344,384	75,300	17,638	5,058	1,724	660	398	73,237
25-29 years	945,776	15	1,283	57,297	498,738	286,121	53,349	13,043	4,060	1,516	845	29,509
30-34 years	484,965	3	182	6,884	55,085	268,636	108,530	23,062	6,413	2,500	1,236	12,434
35-39 years	117,496	-	40	1,006	5,102	19,453	53,284	24,005	6,563	2,345	1,370	4,328
40-44 years	17,827	-	3	134	456	1,101	2,703	6,948	3,804	1,157	606	915
45-49 years	852	-	2	-	15	27	46	117	362	159	71	53
Black												
All ages	587,797	84	23,422	101,918	113,011	74,808	32,361	13,553	5,422	2,258	1,541	219,419
Under 15 years	5,425	44	966	158	28	9	2	-	-	1	-	4,217
15-19 years	143,278	36	19,676	29,633	5,850	1,339	401	184	77	35	34	86,013
20-24 years	208,194	1	2,605	62,031	47,630	12,134	3,476	1,273	515	225	175	78,129
25-29 years	139,536	2	152	8,769	51,250	32,600	8,417	2,884	1,177	475	313	33,497
30-34 years	67,310	1	20	1,165	7,388	25,696	13,296	4,282	1,527	697	397	12,841
35-39 years	19,867	-	3	146	790	2,789	6,302	3,720	1,328	528	402	3,859
40-44 years	3,970	-	-	15	73	237	456	1,191	729	259	197	813
45-49 years	217	-	-	1	2	4	11	19	69	38	23	50

¹Includes races other than white and black.

Table 12. Birth rates by age of father and race of child: United States, 1970-81

[Rates are live births per 1,000 men in specified group, enumerated as of April 1 for 1970 and 1980 and estimated as of July 1 for all other years. Figures for age of father not stated are distributed]

Year and race of child	Age of father									
	15-54 years ¹	15-19 years ²	20-24 years	25-29 years	30-34 years	35-39 years	40-44 years	45-49 years	50-54 years	55 years and over
All races										
1981 ³	56.3	18.5	88.0	119.7	88.6	43.2	16.9	6.3	2.3	0.4
1980 ³	57.0	18.8	92.0	123.0	91.0	42.8	17.1	6.1	2.2	0.4
1979 ³	55.8	18.5	90.6	122.4	89.3	42.2	16.7	6.0	2.3	0.3
1978 ³	54.1	18.1	89.7	120.0	86.7	40.8	16.3	5.8	2.2	0.3
1977 ³	54.9	19.1	92.8	124.2	85.9	41.1	16.5	6.0	2.2	0.3
1976 ³	53.2	19.4	92.1	120.3	82.6	39.8	16.2	6.0	2.1	0.3
1975 ³	53.8	20.8	96.2	123.9	81.5	39.9	16.5	6.1	2.2	0.4
1974 ³	55.0	21.7	101.2	128.2	83.9	40.8	16.8	6.2	2.2	0.4
1973 ³	55.7	22.4	104.3	129.7	86.0	42.5	18.0	6.7	2.3	0.4
1972 ³	59.1	23.4	113.2	137.6	91.8	46.7	19.9	7.4	2.5	0.4
1971 ⁴	66.1	23.9	129.8	160.2	103.8	53.2	22.7	8.2	2.9	0.5
1970 ⁴	71.5	25.6	146.6	175.0	112.3	57.6	24.9	9.1	3.1	0.6
White										
1981 ³	52.3	14.9	80.7	115.2	84.7	39.7	14.7	5.1	1.8	0.3
1980 ³	52.9	15.2	84.0	118.4	86.9	39.2	14.7	5.0	1.8	0.3
1979 ³	51.6	14.9	82.2	117.4	85.3	38.7	14.6	5.0	1.8	0.2
1978 ³	50.0	14.7	81.0	115.0	82.9	37.4	14.2	4.9	1.7	0.2
1977 ³	50.9	15.5	84.0	119.4	82.7	37.8	14.5	5.1	1.7	0.2
1976 ³	49.3	15.8	83.2	115.6	79.7	36.7	14.4	5.1	1.7	0.2
1975 ³	49.8	17.1	86.6	119.5	78.6	36.8	14.8	5.2	1.7	0.3
1974 ³	51.1	17.7	91.0	124.3	81.1	37.9	15.2	5.4	1.8	0.3
1973 ³	51.5	18.1	93.3	125.4	83.2	39.5	16.4	5.7	1.8	0.3
1972 ³	54.7	18.8	101.8	133.2	88.7	43.4	18.1	6.3	2.0	0.3
1971 ⁴	61.5	19.3	118.3	155.6	100.1	49.6	20.6	7.0	2.3	0.3
1970 ⁴	67.1	21.0	135.3	170.9	109.3	54.5	22.9	7.9	2.6	0.4
All other										
1981 ³	81.2	36.3	129.7	147.4	113.9	68.0	32.3	14.3	6.2	1.3
1980 ³	83.6	37.5	139.0	152.3	118.9	68.6	33.7	14.3	6.2	1.3
1979 ³	83.5	37.5	141.1	155.1	118.2	68.2	32.3	14.0	6.3	1.2
1978 ³	81.9	36.7	143.1	153.2	114.6	66.5	31.8	13.1	5.9	1.2
1977 ³	82.3	38.9	147.3	156.7	110.4	65.3	31.1	13.2	6.2	1.2
1976 ³	80.1	39.2	148.8	153.9	104.4	62.4	29.3	13.2	5.9	1.3
1975 ³	81.8	42.4	158.5	156.4	102.5	63.5	29.4	13.1	6.0	1.4
1974 ³	83.4	45.2	168.4	157.7	104.2	62.9	29.5	13.2	6.4	1.4
1973 ³	86.4	48.2	178.5	163.1	106.9	65.5	30.5	14.8	6.3	1.5
1972 ³	91.9	50.9	191.7	173.1	115.2	71.1	34.4	16.4	7.2	1.8
1971 ⁴	100.8	51.9	211.5	195.4	130.8	80.4	39.9	18.9	8.1	2.1
1970 ⁴	104.5	55.2	224.9	202.6	135.1	82.4	42.5	20.4	9.0	2.7
Black										
1981 ³	81.2	39.3	136.6	148.1	105.2	61.9	30.3	13.6	6.0	1.2
1980 ³	83.8	40.4	146.6	154.2	110.8	62.8	31.5	13.8	6.0	1.2
1979 ³	83.7	40.2	148.7	156.7	109.8	62.3	30.7	13.7	6.2	1.1
1978 ³	81.9	39.0	150.7	154.1	106.3	61.0	30.1	12.7	5.7	1.1
1977 ³	82.9	41.4	155.2	158.6	104.5	60.5	30.1	12.7	6.1	1.1
1976 ³	80.4	41.7	156.6	154.3	97.7	57.2	28.0	12.7	5.7	1.1
1975 ³	82.1	45.0	167.3	156.8	95.5	57.7	28.5	12.6	5.9	1.1
1974 ³	83.4	47.9	176.8	156.8	96.5	57.5	28.5	12.8	6.2	1.1
1973 ³	86.7	51.1	187.3	162.6	100.6	60.6	29.8	14.4	6.2	1.3
1972 ³	92.5	54.0	201.5	172.9	109.2	67.4	33.5	16.1	6.9	1.5
1971 ⁴	101.7	54.8	222.9	197.2	125.5	76.7	39.0	18.5	7.8	1.8
1970 ⁴	107.4	58.7	243.7	209.6	132.6	80.9	41.9	20.6	8.8	2.1

¹Rates computed by relating total births, regardless of age of father, to men aged 15-54 years.

²Rates computed by relating births of fathers under 20 years of age to men aged 15-19 years.

³Based on 100 percent of births in selected States and on a 50-percent sample of births in all other States; see Technical notes.

⁴Based on a 50-percent sample of births.

Table 13. Number and percent low birth weight and live births by birth weight, by age of mother and race of child: United States, 1981

[Based on 100 percent of births in selected States and on a 50-percent sample of births in all other States; see Technical notes]

Age of mother and race of child	Low birth weight ¹		Total	Birth weight ²										Not stated	
	Number	Percent		Less than 500	500- 999	1,000- 1,499	1,500- 1,999	2,000- 2,499	2,500- 2,999	3,000- 3,499	3,500- 3,999	4,000- 4,499	4,500- 4,999		5,000 grams or more
				grams	grams	grams	grams	grams	grams	grams	grams	grams	grams		grams
All races															
All ages	246,749	6.8	3,629,238	3,826	16,018	22,121	47,000	157,784	592,958	1,341,907	1,053,583	321,054	57,827	8,052	7,108
Under 15 years	1,345	14.0	9,632	33	115	154	260	783	2,425	3,784	1,717	312	36	3	10
15-19 years	49,731	9.4	527,392	782	3,395	4,912	9,513	31,129	110,246	205,940	126,532	29,460	3,995	491	997
15 years	3,177	12.2	25,961	47	240	351	679	1,860	6,168	10,204	5,178	1,053	105	12	64
16 years	6,506	10.9	59,603	99	510	708	1,284	3,905	13,324	23,452	13,112	2,739	308	50	112
17 years	10,214	10.0	101,833	160	740	1,012	1,936	6,366	21,824	40,073	23,571	5,219	670	71	191
18 years	13,517	9.2	147,006	226	901	1,350	2,581	8,459	30,691	57,492	35,365	8,414	1,109	135	283
19 years	16,317	8.5	192,989	250	1,004	1,491	3,033	10,539	38,239	74,719	49,306	12,035	1,803	223	347
20-24 years	84,081	6.9	1,212,000	1,213	5,210	7,241	15,658	54,759	209,459	460,722	341,923	96,235	15,463	1,849	2,268
25-29 years	65,511	5.8	1,128,188	998	4,256	5,634	12,444	42,179	166,007	411,987	348,772	110,964	20,084	2,662	2,201
30-34 years	33,703	5.8	581,454	600	2,263	3,025	6,639	21,176	80,292	202,922	183,212	64,451	13,488	2,147	1,239
35-39 years	10,312	7.1	146,056	165	683	976	2,056	6,432	20,818	48,645	44,398	16,758	4,045	745	335
40-44 years	1,935	8.3	23,326	35	90	165	396	1,249	3,539	7,527	6,692	2,759	676	143	55
45-49 years	131	11.0	1,190	-	6	14	34	77	172	380	337	115	40	12	3
White															
All ages	164,636	5.7	2,908,669	2,226	9,798	14,238	31,385	106,989	423,524	1,062,482	905,159	287,704	52,495	7,098	5,571
Under 15 years	411	10.4	3,970	12	40	52	83	224	829	1,583	916	204	22	1	4
15-19 years	28,458	7.7	370,013	390	1,845	2,728	5,545	17,950	67,416	144,158	100,214	25,098	3,558	414	697
15 years	1,365	9.7	14,039	14	99	161	326	765	2,764	5,580	3,430	769	87	12	32
16 years	3,292	8.8	37,335	42	264	344	668	1,974	7,148	14,682	9,628	2,208	269	33	75
17 years	5,806	8.3	69,539	77	394	565	1,138	3,632	12,953	27,399	18,172	4,409	602	63	135
18 years	8,082	7.7	105,397	122	521	797	1,572	5,070	19,400	41,026	28,429	7,175	958	116	211
19 years	9,913	6.9	143,703	135	567	861	1,841	6,509	25,151	55,471	40,555	10,537	1,642	190	244
20-24 years	55,704	5.8	967,770	708	3,129	4,580	10,365	36,922	149,673	365,014	293,630	86,176	14,129	1,662	1,782
25-29 years	47,136	5.0	945,776	597	2,798	3,955	8,944	30,842	126,709	340,971	307,487	100,891	18,392	2,394	1,796
30-34 years	24,305	5.0	484,965	387	1,472	2,139	4,741	15,566	61,091	166,552	159,775	58,153	12,219	1,873	997
35-39 years	7,241	6.2	117,496	110	455	680	1,418	4,578	15,271	38,282	37,493	14,761	3,572	623	253
40-44 years	1,293	7.3	17,827	22	55	96	267	853	2,430	5,670	5,384	2,322	568	120	40
45-49 years	88	10.3	852	-	4	8	22	54	105	252	260	99	35	11	2
All other															
All ages	82,113	11.4	720,569	1,600	6,220	7,883	15,615	50,795	169,434	279,425	148,424	33,350	5,332	954	1,537
Under 15 years	934	16.5	5,662	21	75	102	177	559	1,596	2,201	801	108	14	2	6
15-19 years	21,273	13.5	157,379	392	1,550	2,184	3,968	13,179	42,830	61,782	26,318	4,362	437	77	300
15 years	1,812	15.2	11,922	33	141	190	353	1,095	3,404	4,624	1,748	284	18	-	32
16 years	3,214	14.4	22,268	57	246	364	616	1,931	6,176	8,770	3,484	531	39	17	37
17 years	4,408	13.6	32,294	83	346	447	798	2,734	8,871	12,674	5,399	810	68	8	56
18 years	5,435	13.1	41,609	104	380	553	1,009	3,389	11,291	16,466	6,936	1,239	151	19	72
19 years	6,404	13.0	49,286	115	437	630	1,192	4,030	13,088	19,248	8,751	1,498	161	33	103

Table 13. Number and percent low birth weight and live births by birth weight, by age of mother and race of child: United States, 1981—Con.

[Based on 100 percent of births in selected States and on a 50-percent sample of births in all other States; see Technical notes]

Age of mother and race of child	Low birth weight ¹		Total	Birth weight ²										Not stated	
	Number	Percent		Less than 500	500— 999	1,000— 1,499	1,500— 1,999	2,000— 2,499	2,500— 2,999	3,000— 3,499	3,500— 3,999	4,000— 4,499	4,500— 4,999		5,000 grams or more
				grams	grams	grams	grams	grams	grams	grams	grams	grams	grams		grams
All other—Con.															
20–24 years	28,377	11.6	244,230	505	2,081	2,661	5,293	17,837	59,786	95,708	48,293	10,059	1,334	187	486
25–29 years	18,375	10.1	182,412	401	1,458	1,679	3,500	11,337	39,298	71,016	41,285	10,073	1,692	268	405
30–34 years	9,398	9.7	96,489	213	791	886	1,898	5,610	19,201	36,370	23,437	6,298	1,269	274	242
35–39 years	3,071	10.8	28,560	55	228	296	638	1,854	5,547	10,363	6,905	1,997	473	122	82
40–44 years	642	11.7	5,499	13	35	69	129	396	1,109	1,857	1,308	437	108	23	15
45–49 years	43	12.7	338	-	2	6	12	23	67	128	77	16	5	1	1
Black															
All ages	73,472	12.5	587,797	1,492	5,805	7,196	14,179	44,800	142,575	225,003	115,663	25,172	3,939	729	1,244
Under 15 years	903	16.6	5,425	21	73	100	161	548	1,563	2,108	734	97	12	2	6
15–19 years	20,103	14.0	143,278	382	1,491	2,071	3,774	12,385	39,853	56,205	22,922	3,553	324	65	253
15 years	1,761	15.5	11,355	33	140	184	343	1,061	3,285	4,400	1,615	254	13	-	27
16 years	3,096	14.9	20,825	57	238	350	592	1,859	5,862	8,189	3,141	456	32	15	34
17 years	4,175	14.1	29,670	82	335	424	756	2,578	8,307	11,649	4,779	662	47	7	44
18 years	5,087	13.5	37,611	99	357	523	958	3,150	10,480	14,850	5,992	1,008	116	15	63
19 years	5,984	13.7	43,817	111	421	590	1,125	3,737	11,919	17,117	7,395	1,173	116	28	85
20–24 years	25,946	12.5	208,194	483	1,974	2,461	4,889	16,139	52,268	81,008	39,535	7,863	1,013	147	414
25–29 years	15,887	11.4	139,536	368	1,342	1,502	3,093	9,582	30,699	52,972	30,672	7,515	1,261	200	330
30–34 years	7,619	11.3	67,310	186	693	755	1,605	4,380	13,526	24,374	16,110	4,413	890	204	174
35–39 years	2,456	12.4	19,867	45	198	251	535	1,427	3,859	6,945	4,695	1,403	356	96	57
40–44 years	524	13.2	3,970	7	32	52	110	323	767	1,318	943	314	81	14	9
45–49 years	34	15.7	217	-	2	4	12	16	40	73	52	14	2	1	1

¹Less than 2,500 grams.

²Equivalents of the gram weight in terms of pounds and ounces are as follows:

- Under 500 grams = 1 pound 1 ounce or less
- 500–999 grams = 1 pound 2 ounces–2 pounds 3 ounces
- 1,000–1,499 grams = 2 pounds 4 ounces–3 pounds 4 ounces
- 1,500–1,999 grams = 3 pounds 5 ounces–4 pounds 6 ounces
- 2,000–2,499 grams = 4 pounds 7 ounces–5 pounds 8 ounces
- 2,500–2,999 grams = 5 pounds 9 ounces–6 pounds 9 ounces
- 3,000–3,499 grams = 6 pounds 10 ounces–7 pounds 11 ounces
- 3,500–3,999 grams = 7 pounds 12 ounces–8 pounds 13 ounces
- 4,000–4,499 grams = 8 pounds 14 ounces–9 pounds 14 ounces
- 4,500–4,999 grams = 9 pounds 15 ounces–11 pounds 0 ounces
- 5,000 grams or more = 11 pounds 1 ounce or more

Table 14. Number and percent of births of low birth weight and number and ratio of births to unmarried women, by race of child: United States and each State, 1981

[By place of residence. Based on 100 percent of births in selected States and on a 50-percent sample of births in all other States; see Technical notes]

State	Low birth weight ¹						Births to unmarried women					
	Number			Percent			Number			Ratio per 1,000 live births		
	All races ²	White	Black	All races ²	White	Black	All races ²	White	Black	All races ²	White	Black
United States	246,749	164,636	73,472	6.8	5.7	12.5	686,605	337,050	328,879	189.2	115.9	559.5
Alabama	4,885	2,317	2,535	7.9	5.8	11.8	13,865	2,555	11,295	225.2	64.4	525.3
Alaska	495	320	34	4.9	4.5	7.5	1,651	726	126	163.5	102.2	275.7
Arizona	3,146	2,528	253	6.1	5.8	11.4	9,477	6,187	996	184.1	142.2	447.2
Arkansas	2,664	1,548	1,099	7.4	5.8	12.3	7,528	2,355	5,148	210.2	88.7	577.3
California ³	24,815	17,735	5,009	5.9	5.2	11.2	91,330	63,810	23,905	217.1	187.0	530.9
Colorado	4,167	3,705	312	8.0	7.8	12.3	7,105	5,806	1,046	134.6	121.6	411.6
Connecticut ³	2,730	1,989	708	6.8	5.8	14.3	7,696	4,634	3,012	192.8	135.1	608.6
Delaware	714	375	329	7.8	5.5	14.9	2,226	793	1,429	242.4	115.5	644.6
District of Columbia	1,217	89	1,123	13.3	5.8	14.9	5,248	286	4,951	570.4	185.6	654.3
Florida	10,276	5,915	4,249	7.4	5.9	11.9	32,947	11,320	21,475	237.9	112.1	599.1
Georgia	7,642	3,385	4,171	8.5	6.0	12.8	21,102	4,020	17,044	234.6	71.2	523.9
Hawaii	1,247	229	58	6.8	5.7	9.1	3,287	573	74	180.5	141.7	115.6
Idaho	1,001	956	6	5.1	5.0	6.6	1,656	1,546	13	84.4	81.3	142.9
Illinois	13,667	7,770	5,601	7.4	5.5	14.2	42,420	15,577	26,602	229.3	110.3	673.8
Indiana	5,319	4,193	1,096	6.3	5.6	11.9	13,990	8,338	5,609	165.3	111.6	605.1
Iowa	2,284	2,134	112	5.0	4.8	10.0	4,949	4,260	624	107.8	96.5	557.1
Kansas	2,580	2,103	407	6.3	5.7	12.2	5,101	3,291	1,683	123.7	89.5	502.1
Kentucky	4,028	3,369	618	7.0	6.6	11.5	8,799	5,740	3,046	153.7	111.7	567.4
Louisiana	6,955	2,952	3,907	8.5	5.9	12.8	19,374	3,670	15,613	235.6	72.8	511.1
Maine	876	858	5	5.3	5.3	5.4	2,368	2,286	22	143.3	141.1	236.6
Maryland ³	4,712	2,375	2,228	7.7	5.8	12.1	16,357	5,099	11,039	266.6	123.6	596.7
Massachusetts	4,427	3,737	587	6.0	5.6	10.9	11,875	8,871	2,862	160.4	132.2	531.7
Michigan ³	9,631	6,520	2,975	6.9	5.7	13.2	22,999	10,857	11,976	163.5	93.9	527.7
Minnesota	3,583	3,178	191	5.3	5.0	11.8	8,010	6,396	864	116.7	99.6	532.7
Mississippi	3,963	1,336	2,594	8.6	5.6	11.8	13,341	1,391	11,893	288.6	58.5	539.0
Missouri	5,185	3,652	1,467	6.7	5.7	12.5	13,754	6,234	7,464	178.7	96.9	637.8
Montana ³	790	692	5	5.5	5.5	7.6	1,912	1,219	22	133.6	96.1	333.3
Nebraska	1,484	1,273	166	5.5	5.0	12.7	3,268	2,337	781	120.3	92.4	595.7
Nevada ³	980	754	175	7.0	6.4	12.5	2,132	1,244	752	151.2	106.0	535.6
New Hampshire	675	667	4	5.0	5.0	3.6	1,547	1,503	34	114.4	113.1	303.6
New Jersey	6,887	4,164	2,583	7.1	5.6	13.3	20,401	8,650	11,640	211.1	115.6	599.4
New Mexico	1,934	1,616	76	7.4	7.4	11.3	5,383	3,666	218	201.6	165.6	314.6
New York ³	17,800	11,108	6,187	7.4	6.1	12.3	59,496	28,482	30,204	245.5	154.9	599.2
North Carolina	6,582	3,396	3,003	7.9	6.0	12.1	16,223	3,702	12,070	193.7	65.2	487.4
North Dakota	556	501	6	4.5	4.4	5.3	1,127	786	6	90.9	69.1	52.6
Ohio ³	11,239	8,137	2,993	6.7	5.7	13.0	30,555	16,291	14,115	182.9	114.5	612.3
Oklahoma	3,561	2,640	578	6.6	6.2	11.3	7,553	3,785	2,644	140.7	88.6	517.0
Oregon	2,076	1,823	94	4.8	4.6	10.2	6,406	5,590	509	148.9	140.2	550.3
Pennsylvania	10,435	7,528	2,757	6.5	5.5	13.4	29,957	15,659	14,124	186.7	113.7	682.8
Rhode Island	734	604	91	5.9	5.4	11.2	1,968	1,481	445	158.1	132.4	545.3
South Carolina	4,593	1,890	2,669	8.9	6.2	12.8	12,299	2,107	10,171	237.2	68.8	489.2
South Dakota	675	529	13	5.3	4.9	13.4	1,742	866	19	136.8	79.4	195.9
Tennessee	5,377	3,281	2,056	8.0	6.4	13.7	13,672	4,770	8,889	203.8	92.7	590.4
Texas ³	19,477	14,146	4,981	6.9	6.0	12.8	38,031	20,646	17,224	135.0	86.9	443.0
Utah	2,189	2,070	25	5.3	5.3	8.8	2,711	2,374	101	65.6	60.2	355.6
Vermont	490	485	2	6.2	6.2	10.0	1,109	1,102	3	139.5	139.6	150.0
Virginia	5,761	3,346	2,292	7.3	5.8	12.0	15,367	5,089	10,182	193.9	87.5	529.7
Washington	3,654	3,002	299	5.2	4.9	10.3	10,096	8,001	1,183	144.8	130.1	406.5
West Virginia	1,963	1,835	119	7.1	6.9	11.7	3,711	3,153	554	133.3	118.1	543.1
Wisconsin	3,915	3,208	607	5.3	4.7	12.6	10,622	7,097	3,143	142.9	104.6	653.7
Wyoming	713	673	17	6.6	6.5	16.0	952	829	35	88.0	80.6	330.2

¹Less than 2,500 grams (5 pounds 8 ounces).
²Includes races other than white and black.
³Marital status of mother is inferred; see Technical notes.

Table 15. Numbers, rates, and ratios of births to unmarried women, by age of mother and race of child: United States, 1981

[Based on 100 percent of births in selected States and on a 50-percent sample of births in all other States; see Technical notes. For 41 States and the District of Columbia, marital status of mother is reported on the birth certificate, and for 9 States, mother's marital status is inferred; see Technical notes. Populations estimated as of July 1]

Age of mother	Number ¹				Rate per 1,000 unmarried women in specified group				Ratio per 1,000 live births			
	All races	White	All other		All races	White	All other		All races	White	All other	
			Total	Black			Total	Black			Total	Black
All ages	686,605	337,050	349,555	328,879	129.6	118.2	175.4	181.4	189.2	115.9	485.1	559.5
Under 15 years	8,589	3,030	5,559	5,361	---	---	---	---	891.7	763.2	981.8	988.2
15-19 years	259,239	128,986	130,253	123,483	28.2	17.1	79.2	86.8	491.5	348.6	827.6	861.8
15 years	20,554	9,031	11,523	11,088	20.9	12.4	60.3	66.9	791.7	643.3	966.5	976.5
16 years	40,173	19,469	20,704	19,760					674.0	521.5	929.8	948.9
17 years	57,881	29,381	28,500	27,034					568.4	422.5	882.5	911.2
18 years	69,056	35,147	33,909	32,035					469.7	333.5	814.9	851.7
19 years	71,575	35,958	35,617	33,566	39.9	24.6	109.0	117.6	370.9	250.2	722.7	766.0
20-24 years	246,919	119,958	126,961	119,550	40.9	24.9	104.5	112.5	203.7	124.0	519.8	574.2
25-29 years	109,174	52,575	56,599	52,883	34.7	21.6	80.1	86.4	96.8	55.6	310.3	379.0
30-34 years	45,300	23,015	22,285	20,456	20.8	13.6	45.6	47.2	77.9	47.5	231.0	303.9
35-39 years	14,281	7,808	6,473	5,863	9.8	6.9	19.7	20.4	97.8	66.5	226.6	295.1
40 years and over	3,103	1,678	1,425	1,283	2.6	21.8	25.7	25.8	126.6	89.8	244.1	306.4

¹Rates computed by relating total births to unmarried mothers, regardless of age of mother, to unmarried women aged 15-44 years.

²Rates computed by relating births to unmarried mothers aged 40 years and over to unmarried women aged 40-44 years.

Table 16. Birth rates for unmarried women by age of mother and race of child: United States, 1970-81

[Rates are live births to unmarried women per 1,000 unmarried women in specified group, estimated as of July 1]

Year and race	Age of mother								
	15-44 years ¹	15-19 years			20-24 years	25-29 years	30-34 years	35-39 years	40-44 years ²
		Total	15-17 years	18-19 years					
All races									
Reported/Inferred ³									
1981 ⁴	29.6	28.2	20.9	39.9	40.9	34.7	20.8	9.8	2.6
1980 ⁴	29.4	27.6	20.6	39.0	40.9	34.0	21.1	9.7	2.6
Estimated ⁵									
1980 ⁴	28.4	27.5	20.7	38.7	39.7	31.4	18.5	8.4	2.3
1979 ⁴	27.2	26.4	19.9	37.2	37.7	29.9	17.7	8.4	2.3
1978 ⁴	25.7	24.9	19.1	35.1	35.3	28.5	16.9	8.2	2.2
1977 ⁴	25.6	25.1	19.8	34.6	34.0	27.7	16.9	8.4	2.4
1976 ⁴	24.3	23.7	19.0	32.1	31.7	26.8	17.5	9.0	2.5
1975 ⁴	24.5	23.9	19.3	32.5	31.2	27.5	17.9	9.1	2.6
1974 ⁴	23.9	23.0	18.8	31.2	30.5	27.9	18.4	10.0	2.6
1973 ⁴	24.3	22.7	18.7	30.4	31.5	29.6	20.3	10.8	3.0
1972 ⁴	24.8	22.8	18.5	30.9	33.2	30.8	22.6	12.0	3.1
1971 ⁶	25.5	22.3	17.5	31.7	35.5	34.5	25.2	13.3	3.5
1970 ⁶	26.4	22.4	17.1	32.9	38.4	37.0	27.1	13.6	3.5
White									
Reported/Inferred ³									
1981 ⁴	18.2	17.1	12.4	24.6	24.9	21.6	13.6	6.9	1.8
1980 ⁴	17.6	16.2	11.8	23.6	24.4	20.7	13.6	6.8	1.8
Estimated ⁵									
1980 ⁴	16.2	15.9	11.7	22.8	22.4	17.3	10.5	5.3	1.4
1979 ⁴	14.9	14.6	10.8	21.0	20.3	15.9	10.0	5.1	1.4
1978 ⁴	13.7	13.6	10.3	19.3	18.1	14.8	9.4	4.8	1.3
1977 ⁴	13.5	13.4	10.5	18.7	17.4	14.4	9.3	4.9	1.4
1976 ⁴	12.6	12.3	9.7	16.9	15.8	14.0	10.1	5.5	1.4
1975 ⁴	12.4	12.0	9.6	16.5	15.5	14.8	9.8	5.4	1.5
1974 ⁴	11.7	11.0	8.8	15.3	15.0	14.7	9.5	5.5	1.5
1973 ⁴	11.8	10.6	8.4	14.9	15.5	15.9	10.6	5.9	1.7
1972 ⁴	11.9	10.4	8.0	15.1	16.6	16.5	12.1	6.5	1.6
1971 ⁶	12.5	10.3	7.4	15.8	18.7	18.5	13.2	7.2	1.9
1970 ⁶	13.8	10.9	7.5	17.6	22.5	21.1	14.2	7.6	2.0
All other									
Reported/Inferred ³									
1981 ⁴	75.4	79.2	60.3	109.0	104.5	80.1	45.6	19.7	5.7
1980 ⁴	77.2	81.7	63.1	111.6	106.6	79.1	46.9	19.2	5.6
Estimated ⁵									
1980 ⁴	78.0	83.0	64.0	113.4	108.2	79.1	46.2	18.5	5.3
1979 ⁴	78.2	83.9	64.8	115.3	107.1	77.7	44.8	19.1	5.7
1978 ⁴	76.5	81.2	63.2	111.6	104.9	76.4	43.6	18.2	5.6
1977 ⁴	77.4	84.0	67.2	112.7	103.1	74.4	43.7	18.5	6.6
1976 ⁴	76.4	82.5	67.5	108.9	101.1	74.0	43.4	18.7	6.9
1975 ⁴	79.0	86.3	70.7	114.3	102.1	73.2	47.9	20.0	6.9
1974 ⁴	80.3	87.3	73.2	113.4	103.0	77.0	50.9	23.2	6.6
1973 ⁴	83.2	88.5	75.6	112.8	107.8	81.0	55.8	26.2	7.2
1972 ⁴	86.2	91.8	77.6	119.3	112.4	83.3	55.7	29.0	8.2
1971 ⁶	90.2	92.0	75.4	125.4	120.6	92.6	65.3	32.2	10.4
1970 ⁶	89.9	90.8	73.3	126.5	121.0	93.8	69.8	32.0	10.7

See footnotes at end of table.

Table 16. Birth rates for unmarried women by age of mother and race of child: United States, 1970-81—Con.

[Rates are live births to unmarried women per 1,000 unmarried women in specified group, estimated as of July 1]

Year and race	Age of mother								
	15-44 years ¹	15-19 years			20-24 years	25-29 years	30-34 years	35-39 years	40-44 years ²
		Total	15-17 years	18-19 years					
Black									
Reported/Inferred ³									
1981 ⁴	81.4	86.8	66.9	117.6	112.5	86.4	47.2	20.4	5.8
1980 ⁴	82.9	89.2	69.6	120.2	115.1	83.9	48.2	19.6	5.6
Estimated ⁵									
1980 ⁴	83.2	90.3	70.6	121.8	116.0	82.9	47.0	18.5	5.5
1979 ⁴	83.0	91.0	71.0	123.3	114.1	80.0	44.8	19.3	5.9
1978 ⁴	81.1	87.9	68.8	119.6	111.4	79.6	43.9	18.5	6.2
1977 ⁴	82.6	90.9	73.0	121.7	110.1	78.6	45.7	19.0	6.6
1976 ⁴	81.6	89.7	73.5	117.9	107.2	78.0	45.0	19.2	7.0
1975 ⁴	84.2	93.5	76.8	123.8	108.0	75.7	50.0	20.5	7.2
1974 ⁴	85.5	93.8	78.6	122.2	109.8	80.3	51.8	24.3	6.7
1973 ⁴	88.6	94.9	81.2	120.5	116.0	84.5	57.8	27.6	7.7
1972 ⁴	91.6	98.2	82.8	128.2	121.2	88.3	57.4	30.4	8.5
1971 ⁶	96.1	98.6	80.7	135.2	130.6	99.6	68.6	32.7	10.1
1970 ⁶	95.5	96.9	77.9	136.4	131.5	100.9	71.8	32.9	10.4

¹Rates computed by relating total births to unmarried mothers, regardless of age of mother, to unmarried women aged 15-44 years.²Rates computed by relating births to unmarried mothers aged 40 years and over to unmarried women aged 40-44 years.³Data for States in which marital status was not reported have been inferred and included with data from the remaining States; see Technical notes.⁴Based on 100 percent of births in selected States and on a 50-percent sample of births in all other States; see Technical notes.⁵Births to unmarried women are estimated for the United States from data for registration areas in which marital status of mother was reported; see Technical notes.⁶Based on a 50-percent sample of births.

Table 17. Live births by interval since last live birth, live-birth order, and race of child: Total of 49 reporting States and the District of Columbia, 1981
 [Based on 100 percent of births in selected States and on a 50-percent sample of births in all other States; see Technical notes. Refers only to second and higher order births. Live-birth order refers to number of children born alive to mother]

Interval since last live birth and race of child	All second and higher order births ¹	Live-birth order						
		2	3	4	5	6	7	8 and over
All races²								
Total	1,891,014	1,069,914	501,118	186,590	70,867	30,913	14,884	16,728
0 months (plural deliveries).....	27,649	10,408	8,997	4,738	1,877	812	399	418
1-11 months.....	28,822	14,589	7,613	3,661	1,497	717	335	410
12-17 months.....	204,284	108,292	53,227	23,529	9,671	4,525	2,200	2,840
18-23 months.....	259,533	147,081	65,003	26,983	10,479	4,771	2,391	2,825
24-35 months.....	426,459	257,539	102,959	38,799	14,419	6,209	3,042	3,492
36-47 months.....	270,566	165,157	68,491	22,741	7,719	3,319	1,502	1,637
48-59 months.....	173,029	100,098	48,339	15,023	5,368	2,133	1,014	1,054
60-71 months.....	111,584	61,966	32,805	10,343	3,509	1,512	667	782
72 months or more.....	282,581	144,463	87,296	30,168	11,819	4,763	2,143	1,929
Not stated.....	106,507	60,321	26,388	10,605	4,509	2,152	1,191	1,341
White								
Total	1,485,932	869,588	390,732	136,252	48,813	20,447	9,647	10,453
0 months (plural deliveries).....	21,225	8,461	7,082	3,412	1,282	509	238	241
1-11 months.....	18,771	10,431	4,895	2,068	702	342	148	185
12-17 months.....	150,162	85,098	38,595	15,443	5,715	2,545	1,221	1,545
18-23 months.....	209,198	123,328	51,567	20,141	7,428	3,262	1,578	1,894
24-35 months.....	353,952	221,141	83,302	29,929	10,615	4,468	2,144	2,353
36-47 months.....	222,227	139,443	55,523	17,141	5,610	2,341	1,054	1,115
48-59 months.....	137,302	80,841	38,466	11,234	3,876	1,477	715	693
60-71 months.....	85,777	48,104	25,597	7,596	2,496	1,040	451	493
72 months or more.....	209,066	106,231	66,802	22,087	8,257	3,209	1,366	1,114
Not stated.....	78,252	46,510	18,903	7,201	2,832	1,254	732	820
Black								
Total	329,485	160,129	90,932	42,062	18,433	8,616	4,261	5,052
0 months (plural deliveries).....	5,586	1,641	1,644	1,178	535	274	147	167
1-11 months.....	8,339	3,407	2,279	1,362	669	302	150	170
12-17 months.....	43,782	18,133	12,067	6,771	3,330	1,630	806	1,045
18-23 months.....	39,868	18,110	10,928	5,669	2,543	1,210	682	726
24-35 months.....	57,098	27,634	15,967	7,336	3,101	1,410	708	942
36-47 months.....	38,668	20,068	10,593	4,635	1,757	829	358	428
48-59 months.....	29,092	15,444	8,118	3,161	1,273	556	242	298
60-71 months.....	21,414	11,444	5,985	2,316	863	389	185	232
72 months or more.....	63,474	33,220	17,423	6,954	3,127	1,363	669	718
Not stated.....	22,164	11,028	5,928	2,680	1,235	653	314	326

¹Excludes not stated birth order.
²Includes races other than white and black.

NOTE: Excludes data for Texas which did not require reporting of date of last live birth.

Table 18. Live births by educational attainment of mother and father and race of child: Total of 47 reporting States and the District of Columbia, 1981
 [Based on 100 percent of births in selected States and on a 50-percent sample of births in all other States; see Technical notes]

Years of school completed	Mother			Father		
	All races ¹	White	Black	All races ¹	White	Black
Total	2,857,147	2,268,302	500,973	2,857,147	2,268,302	500,973
0-5 years	19,605	12,644	3,127	19,051	14,219	2,329
6 years	15,396	11,560	2,274	15,335	12,390	1,726
7 years	17,208	11,680	4,667	12,272	9,828	1,866
8 years	64,896	48,590	13,694	49,200	42,325	5,237
9 years	118,103	85,965	28,400	64,628	55,062	7,783
10 years	192,633	136,354	50,483	117,771	96,859	17,672
11 years	215,563	137,276	72,041	138,126	105,516	28,751
12 years	1,234,182	996,890	207,817	1,003,782	839,609	138,807
13 years	214,639	177,609	32,029	147,260	127,391	16,036
14 years	220,432	180,890	33,287	223,813	193,555	23,870
15 years	85,461	70,338	12,343	80,935	68,926	9,504
16 years	286,099	252,589	23,349	318,458	288,602	19,945
17 years or more	130,443	114,690	9,279	235,664	213,619	10,574
Not stated	42,487	31,227	8,183	430,852	200,401	216,873

¹Includes races other than white and black.

NOTE: Excludes data for California, Texas, and Washington, which did not require reporting of educational attainment of mother and father.

Table 19. Live births by educational attainment of mother, age of mother, and race of child: Total of 47 reporting States and the District of Columbia, 1981

[Based on 100 percent of births in selected States and on a 50-percent sample of births in all other States; see Technical notes]

Age of mother and race of child	Total	Years of school completed by mother					
		0-8 years	9-11 years	12 years	13-15 years	16 years or more	Not stated
All races¹							
All ages	2,857,147	117,105	526,299	1,234,182	520,532	416,542	42,487
Under 15 years	7,653	5,548	1,882	-	-	-	223
15-19 years	415,367	31,113	221,695	142,471	12,986	124	6,978
15 years	20,516	5,985	13,973	115	-	-	443
16 years	46,949	6,092	38,908	1,090	12	-	847
17 years	80,453	6,065	60,420	12,411	172	-	1,385
18 years	115,708	6,393	56,333	48,935	2,123	-	1,924
19 years	151,741	6,578	52,061	79,920	10,679	124	2,379
20-24 years	952,792	31,689	181,343	513,304	172,863	39,754	13,839
25-29 years	893,773	23,436	76,639	378,630	213,254	189,581	12,233
30-34 years	456,929	15,360	30,171	154,138	98,577	151,976	6,707
35-39 years	112,100	7,495	11,655	38,871	20,148	31,883	2,048
40 years and over	18,533	2,464	2,914	6,768	2,704	3,224	459
White							
All ages	2,268,302	84,474	359,595	996,890	428,837	367,279	31,227
Under 15 years	2,678	2,027	559	-	-	-	92
15-19 years	280,769	22,817	144,832	100,400	8,115	82	4,523
15 years	10,103	3,388	6,427	47	-	-	241
16 years	27,640	4,263	22,188	658	10	-	521
17 years	52,607	4,726	39,134	7,771	105	-	871
18 years	80,162	5,141	39,126	33,396	1,222	-	1,277
19 years	110,257	5,299	37,957	58,528	6,778	82	1,613
20-24 years	750,693	24,791	132,045	415,648	135,105	33,057	10,047
25-29 years	748,791	17,090	52,894	318,239	182,701	168,325	9,542
30-34 years	381,985	10,891	19,924	126,305	83,956	135,723	5,186
35-39 years	89,539	5,248	7,524	31,028	16,762	27,419	1,558
40 years and over	13,847	1,610	1,817	5,270	2,198	2,673	279
Black							
All ages	500,973	23,762	150,924	207,817	77,659	32,628	8,183
Under 15 years	4,779	3,366	1,292	-	-	-	121
15-19 years	123,719	7,036	71,323	38,764	4,514	33	2,049
15 years	9,960	2,440	7,272	67	-	-	181
16 years	18,174	1,642	15,836	404	2	-	290
17 years	25,793	1,127	19,786	4,382	65	-	433
18 years	32,433	960	15,729	14,377	835	-	532
19 years	37,359	867	12,700	19,534	3,612	33	613
20-24 years	176,851	4,423	43,960	86,645	33,507	5,511	2,805
25-29 years	117,784	3,975	20,770	51,508	25,209	14,481	1,841
30-34 years	57,113	2,858	8,911	23,079	11,473	9,792	1,000
35-39 years	17,086	1,550	3,662	6,520	2,564	2,501	289
40 years and over	3,641	554	1,006	1,301	392	310	78

¹Includes races other than white and black.

NOTE: Excludes data for California, Texas, and Washington, which did not require reporting of educational attainment of mother.

Table 20. Live births by month of pregnancy prenatal care began, age of mother, and race of child: United States, 1981

(Based on 100 percent of births in selected States and on a 50-percent sample of births in all other States; see Technical notes)

Age of mother and race of child	Total	Month of pregnancy prenatal care began					No prenatal care	Not stated
		1st and 2d month	3d month	4th-6th month	7th-9th month			
All races¹								
All ages.....	3,629,238	1,840,614	859,529	654,168	135,429	48,131	91,367	
Under 15 years.....	9,632	1,587	1,706	4,096	1,348	511	384	
15-19 years.....	527,392	158,319	125,718	172,820	40,175	13,819	16,541	
15 years.....	25,961	5,246	5,221	10,637	2,754	1,074	1,029	
16 years.....	59,603	13,923	13,386	22,961	5,417	1,910	2,006	
17 years.....	101,833	26,830	24,137	36,330	8,360	2,949	3,227	
18 years.....	147,006	43,824	35,515	47,994	11,244	3,738	4,691	
19 years.....	192,989	68,496	47,459	54,898	12,400	4,148	5,588	
20-24 years.....	1,212,000	582,966	295,583	235,505	49,387	17,228	31,331	
25-29 years.....	1,128,188	663,524	261,656	142,400	26,001	9,308	25,299	
30-34 years.....	581,454	347,254	133,885	69,937	12,612	4,677	13,089	
35-39 years.....	146,056	76,994	35,034	23,554	4,564	1,995	3,915	
40 years and over.....	24,516	9,970	5,947	5,856	1,342	593	808	
White								
All ages.....	2,908,669	1,562,990	693,509	464,445	91,666	29,937	66,122	
Under 15 years.....	3,970	684	721	1,579	598	223	165	
15-19 years.....	370,013	118,448	91,581	114,812	26,244	8,192	10,736	
15 years.....	14,039	2,982	2,879	5,586	1,531	551	510	
16 years.....	37,335	9,195	8,741	13,841	3,322	1,064	1,172	
17 years.....	69,539	19,236	17,248	23,892	5,385	1,712	2,066	
18 years.....	105,397	33,087	26,293	33,028	7,566	2,283	3,140	
19 years.....	143,703	53,948	36,420	38,465	8,440	2,582	3,848	
20-24 years.....	967,770	492,531	238,558	169,298	33,726	10,939	22,718	
25-29 years.....	945,776	579,089	219,009	104,803	17,958	5,773	19,144	
30-34 years.....	484,965	299,827	111,015	52,191	8,907	3,099	9,926	
35-39 years.....	117,496	64,436	28,061	17,500	3,286	1,317	2,896	
40 years and over.....	18,679	7,975	4,564	4,262	947	394	537	
Black								
All ages.....	587,797	218,769	135,512	161,685	35,390	16,137	20,304	
Under 15 years.....	5,425	880	940	2,424	699	271	211	
15-19 years.....	143,278	36,105	31,099	53,298	12,353	5,218	5,205	
15 years.....	11,355	2,183	2,236	4,817	1,141	492	486	
16 years.....	20,825	4,376	4,360	8,604	1,919	793	773	
17 years.....	29,670	6,950	6,330	11,505	2,672	1,167	1,046	
18 years.....	37,611	9,681	8,354	13,631	3,221	1,340	1,384	
19 years.....	43,817	12,915	9,819	14,741	3,400	1,426	1,516	
20-24 years.....	208,194	76,399	48,844	57,312	12,913	5,609	7,117	
25-29 years.....	139,536	63,424	32,834	29,764	5,819	3,023	4,672	
30-34 years.....	67,310	32,246	15,929	13,092	2,479	1,324	2,240	
35-39 years.....	19,867	8,319	4,854	4,587	868	549	690	
40 years and over.....	4,187	1,396	1,012	1,208	259	143	169	

¹Includes races other than white and black.

Table 21. Live births by number of prenatal visits, month of pregnancy prenatal care began, and race of child: Total of 48 reporting States and the District of Columbia, 1981

[Based on 100 percent of births in selected States and on a 50-percent sample of births in all other States; see Technical notes]

Month of pregnancy prenatal care began and race of child	Number of prenatal visits												
	Total	No visits	1-2 visits	3-4 visits	5-6 visits	7-8 visits	9-10 visits	11-12 visits	13-14 visits	15-16 visits	17-18 visits	19 visits or more	Not stated
All races ¹	3,181,813	43,782	58,792	108,787	211,504	361,312	670,884	869,618	425,015	225,842	49,710	56,324	100,243
1st and 2d month	1,616,971	...	7,339	12,935	39,640	113,701	306,158	556,443	309,371	169,948	37,513	42,391	21,532
3d month	754,320	...	5,303	13,252	43,930	97,514	207,594	229,488	88,015	41,197	9,269	9,604	9,154
4th-6th month.....	571,640	...	16,284	48,003	98,242	132,271	146,054	77,807	25,320	13,386	2,631	3,862	7,780
7th-9th month.....	119,161	...	28,149	33,075	27,625	15,465	7,585	3,074	1,001	529	100	185	2,373
No prenatal care.....	43,782	43,782
Not stated.....	75,939	...	1,717	1,522	2,067	2,361	3,493	2,806	1,308	782	197	282	59,404
White	2,545,291	26,387	35,353	66,833	142,903	270,087	540,136	741,994	368,736	192,761	42,209	45,965	71,927
1st and 2d month	1,379,423	...	4,730	8,169	28,498	90,372	257,635	485,303	272,208	147,785	32,445	35,556	16,722
3d month	608,693	...	3,126	8,117	30,542	74,737	168,287	192,892	75,174	34,083	7,623	7,449	6,663
4th-6th month.....	398,300	...	8,970	28,219	63,735	92,517	106,358	59,447	19,600	9,927	1,948	2,655	4,924
7th-9th month.....	78,828	...	17,576	21,398	18,834	10,834	5,241	2,174	732	379	64	129	1,467
No prenatal care.....	26,387	26,387
Not stated.....	53,660	...	951	930	1,294	1,627	2,615	2,178	1,022	587	129	176	42,151
Black	542,074	15,764	20,656	36,810	59,829	78,422	111,284	105,253	45,183	28,452	6,535	9,302	24,584
1st and 2d month	197,078	...	2,320	4,225	9,716	19,861	40,535	57,821	29,047	18,851	4,387	6,084	4,231
3d month	123,975	...	1,935	4,527	11,760	19,571	33,628	30,173	10,668	6,187	1,434	1,960	2,132
4th-6th month.....	152,102	...	6,690	17,773	30,410	34,566	34,419	15,946	4,996	3,111	622	1,117	2,452
7th-9th month.....	33,948	...	9,046	9,829	7,345	3,809	1,965	796	244	128	31	47	708
No prenatal care.....	15,764	15,764
Not stated.....	19,207	...	665	456	598	615	737	517	228	175	61	94	15,061

¹Includes races other than white and black.

NOTE: Excludes data for California and New Mexico which did not require reporting of number of prenatal visits.

Table 22. Live births by birth weight, period of gestation, and race of child: Total of 49 reporting States and the District of Columbia, 1981

[Based on 100 percent of births in selected States and on a 50-percent sample of births in all other States; see Technical notes]

Period of gestation and race of child	Total	Birth weight ¹											
		Less than 500 grams	500- 999 grams	1,000- 1,499 grams	1,500- 1,999 grams	2,000- 2,499 grams	2,500- 2,999 grams	3,000- 3,499 grams	3,500- 3,999 grams	4,000- 4,499 grams	4,500- 4,999 grams	5,000 grams or more	Not stated
All races ²													
Total.....	3,602,539	3,800	15,935	21,979	46,667	156,434	587,379	1,331,165	1,047,218	319,618	57,631	7,994	6,719
Under 28 weeks.....	24,685	2,863	9,797	3,414	1,364	1,226	1,752	2,134	1,063	287	51	55	679
28-31 weeks.....	37,903	137	2,646	9,783	8,503	4,127	4,575	4,824	2,371	595	91	24	227
32-35 weeks.....	157,792	55	765	4,348	19,268	40,365	40,336	33,243	15,179	3,242	545	110	336
36 weeks.....	106,854	7	92	559	3,168	17,115	37,375	31,809	12,905	3,070	524	77	153
37-39 weeks.....	1,280,737	72	317	1,087	7,496	54,956	270,354	540,806	321,528	71,118	10,313	1,482	1,208
40 weeks.....	766,443	32	239	296	1,381	13,044	93,827	296,481	266,181	79,851	12,731	1,616	764
41 weeks.....	540,606	73	221	248	957	7,489	53,179	186,529	200,317	74,598	14,591	1,794	610
42 weeks and over.....	549,672	28	155	417	1,512	10,182	61,642	187,315	192,296	76,103	16,781	2,546	695
Not stated.....	137,847	533	1,703	1,827	3,018	7,930	24,339	48,024	35,378	10,754	2,004	290	2,047
White													
Total.....	2,886,525	2,209	9,723	14,126	31,098	105,864	418,881	1,053,652	899,890	286,475	52,321	7,058	5,228
Under 28 weeks.....	14,418	1,631	5,998	2,098	660	567	866	1,214	729	200	32	32	391
28-31 weeks.....	23,418	82	1,587	6,470	5,800	2,240	2,302	2,698	1,555	458	77	17	132
32-35 weeks.....	105,091	39	491	2,809	13,035	27,973	26,091	20,954	10,481	2,486	435	77	220
36 weeks.....	76,704	6	60	365	2,071	11,822	26,740	22,826	9,749	2,460	437	65	103
37-39 weeks.....	1,001,280	51	219	668	4,998	37,142	192,478	422,501	270,075	61,962	8,974	1,270	942
40 weeks.....	638,451	19	137	171	962	9,027	69,273	241,329	231,934	71,936	11,591	1,421	651
41 weeks.....	462,048	49	118	165	610	5,155	40,117	154,330	177,684	68,194	13,494	1,612	520
42 weeks and over.....	460,418	23	102	247	992	6,796	44,801	151,475	168,291	69,308	15,487	2,315	581
Not stated.....	104,697	309	1,011	1,133	1,970	5,142	16,213	36,325	29,392	9,471	1,794	249	1,688
Black													
Total.....	587,104	1,487	5,801	7,186	14,171	44,751	142,429	224,718	115,526	25,145	3,939	725	1,226
Under 28 weeks.....	9,584	1,150	3,559	1,215	671	623	829	854	298	77	16	23	269
28-31 weeks.....	13,154	50	975	3,024	2,434	1,772	2,052	1,900	726	117	12	7	85
32-35 weeks.....	46,588	14	258	1,418	5,680	10,999	12,677	10,720	3,984	622	90	26	100
36 weeks.....	26,019	1	31	176	993	4,695	9,199	7,663	2,655	489	67	11	39
37-39 weeks.....	228,096	21	89	373	2,272	15,640	65,111	95,375	40,656	7,147	1,035	173	204
40 weeks.....	102,301	12	95	104	378	3,554	20,553	43,987	26,499	6,039	845	143	92
41 weeks.....	62,396	22	100	75	321	2,028	10,961	25,617	17,542	4,702	816	140	72
42 weeks and over.....	72,859	5	45	150	474	3,055	14,537	29,644	18,729	5,049	907	169	95
Not stated.....	26,107	212	649	651	948	2,385	6,510	8,958	4,437	903	151	33	270

¹Equivalents of the gram weights in terms of pounds and ounces are shown on table 13.²Includes races other than white and black.

NOTE: Excludes data for New Mexico which did not require reporting of first day of last normal menstrual period.

Table 23. Live births by 1- and 5-minute Apgar scores, by race of child: Total of reporting States, 1981

[Based on 100 percent of births in selected States and on a 50-percent sample of births in all other States; see Technical notes]

<i>Time of score and race of child</i>	<i>Total</i>	<i>Apgar score</i>											
		<i>0</i>	<i>1</i>	<i>2</i>	<i>3</i>	<i>4</i>	<i>5</i>	<i>6</i>	<i>7</i>	<i>8</i>	<i>9</i>	<i>10</i>	<i>Not stated</i>
1-minute Apgar score¹													
All races ²	2,854,808	2,270	18,279	19,515	23,901	34,599	59,232	111,966	288,677	959,368	1,165,040	83,336	88,625
White	2,278,680	1,583	12,194	13,616	17,165	25,951	45,715	88,764	233,769	779,294	926,902	66,864	66,863
Black.....	488,985	616	5,517	5,351	6,091	7,613	11,838	20,106	46,337	148,411	203,340	14,474	19,291
5-minute Apgar score³													
All races ²	2,864,009	2,273	6,539	4,449	4,374	6,063	11,122	22,965	54,950	232,162	1,602,054	834,026	83,032
White	2,280,221	1,557	4,113	2,834	2,840	4,111	7,678	16,667	41,553	182,508	1,275,378	676,707	64,275
Black.....	496,552	658	2,249	1,512	1,424	1,787	3,142	5,753	11,939	42,743	274,063	134,681	16,601

¹Total of 46 reporting States. Excludes data for California, Delaware, District of Columbia, Oklahoma, and Texas.

²Includes races other than white and black.

³Total of 46 reporting States and the District of Columbia. Excludes data for California, Delaware, Oklahoma, and Texas.

Table 24. Live births by 1-minute Apgar score, 5-minute Apgar score, and race of child: Total of 46 reporting States, 1981

[Based on 100 percent of births in selected States and on a 50-percent sample of births in all other States; see Technical notes]

1-minute Apgar score and race of child	Total	5-minute Apgar score										Not stated	
		0	1	2	3	4	5	6	7	8	9		10
All races¹													
Total	2,854,808	2,269	6,480	4,415	4,346	6,014	11,059	22,862	54,745	231,289	1,595,338	833,203	82,788
0	2,270	676	401	217	195	134	108	85	38	58	56	40	262
1	18,279	824	4,516	1,510	1,520	1,667	1,976	1,900	1,598	1,388	969	128	283
2	19,515	224	801	1,804	1,139	1,701	2,454	3,287	2,956	2,780	1,918	205	246
3	23,901	69	218	312	834	1,057	2,590	4,305	5,372	4,930	3,675	338	201
4	34,599	28	100	151	172	651	1,683	5,104	8,216	9,832	7,764	674	224
5	59,232	19	64	85	116	207	1,064	4,463	13,089	20,148	17,925	1,798	254
6	111,966	23	63	68	96	162	276	2,225	13,719	44,288	45,673	4,985	388
7	288,677	53	51	83	93	160	340	564	6,874	84,289	178,168	17,369	633
8	959,368	133	98	88	95	166	282	536	1,814	59,014	786,217	109,447	1,478
9	1,165,040	190	92	51	33	63	184	224	740	2,978	543,109	614,450	2,926
10	83,336	16	5	1	6	2	24	11	22	125	737	81,665	722
Not stated	88,625	14	71	45	47	44	78	158	307	1,459	9,127	2,104	75,171
White													
Total	2,278,680	1,555	4,107	2,833	2,839	4,107	7,669	16,659	41,525	182,387	1,274,210	676,535	64,254
0	1,583	449	268	152	135	94	79	59	31	33	38	30	215
1	12,194	572	2,861	946	992	1,151	1,334	1,275	1,096	996	683	100	188
2	13,616	148	498	1,161	751	1,144	1,679	2,316	2,133	2,044	1,424	160	158
3	17,165	37	131	189	542	713	1,791	3,083	3,902	3,644	2,714	285	134
4	25,951	17	60	98	109	455	1,227	3,766	6,190	7,382	5,943	545	159
5	45,715	15	42	53	72	141	762	3,394	10,014	15,491	14,065	1,474	192
6	88,764	18	39	44	58	101	196	1,668	10,598	34,911	36,784	4,054	293
7	233,769	35	32	62	63	118	233	429	5,375	66,868	145,495	14,540	519
8	779,294	105	66	63	66	115	195	402	1,425	47,581	635,640	92,443	1,193
9	926,902	138	62	36	19	42	119	170	555	2,400	424,880	496,047	2,434
10	66,864	10	5	1	2	-	13	6	18	107	642	65,407	653
Not stated	66,863	11	43	28	30	33	41	91	188	930	5,902	1,450	58,116
Black													
Total	488,985	656	2,196	1,479	1,397	1,742	3,090	5,658	11,762	41,998	268,590	134,039	16,378
0	616	200	126	60	51	36	25	25	5	24	13	6	45
1	5,517	241	1,534	523	483	459	582	559	456	342	232	23	83
2	5,351	71	276	602	364	526	713	882	731	649	412	41	84
3	6,091	31	84	117	276	311	735	1,126	1,325	1,140	841	41	64
4	7,613	11	39	48	60	172	420	1,212	1,807	2,135	1,550	103	56
5	11,838	4	20	32	43	61	276	980	2,714	4,090	3,284	273	61
6	20,106	4	20	23	36	56	72	521	2,776	8,183	7,518	813	84
7	46,337	16	18	21	26	40	90	122	1,332	14,990	27,245	2,337	100
8	148,411	24	26	23	28	48	80	116	336	9,465	123,834	14,190	241
9	203,340	46	26	13	11	20	52	47	167	500	100,709	101,325	424
10	14,474	5	-	-	4	2	8	4	4	13	76	14,300	58
Not stated	19,291	3	27	17	15	11	37	64	109	467	2,876	587	15,078

¹Includes races other than white and black.

NOTE: Excludes data for California, Delaware, District of Columbia, Oklahoma, and Texas, which did not require the reporting of both 1- and 5-minute Apgar scores.

Technical notes

Sources of data

Data shown in this report for 1981 are based on 100 percent of the birth certificates of 44 States that provided data through the Vital Statistics Cooperative Program. These States accounted for 83 percent of all births in the United States in 1981. Data from the remaining areas (Arizona, California, Delaware, the District of Columbia, Georgia, New Mexico, and North Dakota) are based on a 50-percent sample of birth certificates filed in those areas.

Many of the topics discussed in this brief report are covered in more analytical detail in other reports published by the National Center for Health Statistics. The topics include first births to older mothers,¹ birth weight,⁴ births to unmarried women,⁵ birth intervals,⁶ prenatal care,⁷ and Apgar score.⁸ Also available are a methodological report on imputing length of gestation³ and three brief reports on births of Hispanic parentage.⁹⁻¹¹ Reports on midwife-attended births, Asian births, and trends in teenage childbearing are in preparation.

Population denominators

Birth rates for 1981 are based on populations estimated as of July 1, 1981.¹² The estimates are based on the 1980 census count. The 1980 census counts by race were modified to be consistent with Office of Management and Budget categories and historical categories for birth data. The modification procedures are discussed in detail in a Census Bureau report.¹³

Births by marital status of mother

Beginning with 1980 data, national estimates of births to unmarried women are derived from two sources. For 41 States and the District of Columbia marital status of mother is reported directly on the birth certificate; for the remaining 9 States, which

lack such an item, marital status is inferred from a comparison of the child's and parents' surnames. This procedure represents a substantial departure from the method used prior to 1980 to prepare national estimates of births to unmarried women. The previous method assumed that the incidence of births to unmarried women in States with no direct question on marital status was the same as the incidence in reporting States in the same geographic division.

The new method represents an attempt to use related information on the birth certificate to improve the quality of national data on this topic as well as to provide data for the individual nonreporting States. The method is based on a comparison of the child's surname, the mother's present and maiden surnames, and the father's surname. Briefly, a birth is classified as occurring to a married woman if the parents' surnames are the same, or if the child's and father's surnames are the same and the mother's current surname is missing. A birth is classified as occurring to an unmarried woman if the father's name is missing, if the parents' surnames are different, or if the father's and child's surnames are different and the mother's current surname is missing. An analysis of the effect of the methodological change on the data for 1980 indicated that the change had significantly greater impact on the figures for white births, particularly those to mothers aged 20 years and older, than on the figures for other racial or age groups.

Computation of percent distributions and medians

Births of unknown live-birth order, educational attainment of mother, month of pregnancy prenatal care began, prenatal visits, and birth weight were subtracted from figures for total births used as denominators before percent distributions and medians were computed. Computations of median years of school completed and median number of prenatal visits were based on tabulations of ungrouped data.

NOTE: A list of references follows the text.

This report presents summary tabulations from the final natality statistics for 1981. More detailed tabulations for 1981 will be published in *Vital Statistics of the United States, Volume I—Natality*. Prior to the publication of that volume, the National Center for Health Statistics will respond to requests for unpublished data whenever possible.

SUGGESTED CITATION

National Center for Health Statistics: Advance report of final natality statistics, 1981. *Monthly Vital Statistics Report*. Vol. 32, No. 9 Supp. DHHS Pub. No. (PHS) 84-1120. Public Health Service, Hyattsville, Md., Dec. 1983.

Copyright Information

This report may be reprinted without further permission.

U.S. DEPARTMENT OF HEALTH AND
HUMAN SERVICES
Public Health Service
National Center for Health Statistics
3700 East-West Highway
Hyattsville, Maryland 20782

FIRST CLASS MAIL
POSTAGE & FEES PAID
PHS
PERMIT No. G29

OFFICIAL BUSINESS
PENALTY FOR PRIVATE USE, \$300

To receive this publication regularly, contact
the National Center for Health Statistics by
calling 301 436-NCHS.
