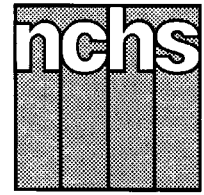


Monthly Vital Statistics Report



Provisional Data From the CENTERS FOR DISEASE CONTROL AND PREVENTION/National Center for Health Statistics

Births, Marriages, Divorces, and Deaths for October 1994

Mortality Surveillance System
pages 4-7

Suicide:
25-44 years of age by sex
45-74 years of age by sex

State Maps
pages 8 and 9

Suicide by sex

Births

According to provisional reports, an estimated 342,000 births occurred in the United States during October 1994. This was only a slight decrease from the provisional number of births reported for October 1993 (344,000). The birth rate, 15.4 live births per 1,000 population, was 1 percent lower than the rate of 15.6 for October 1993. The fertility rate, 67.9 live births per 1,000 women aged 15-44 years, was 1 percent lower than the comparable rate for October 1993 (68.4). The seasonally adjusted fertility rate (68.1) was also 1 percent lower than the comparable rate for October 1993 (68.6).

During the first 10 months of 1994, an estimated 3,357,000 births occurred, a

decline of 1 percent from the 3,400,000 reported for the first 10 months of 1993. The birth rate during this period declined by 2 percent from 15.8 in 1993 to 15.5 in 1994.

An estimated 3,996,000 live births occurred in the 12-month period ending with October 1994, a decline of 2 percent from the 4,057,000 births reported for the same period a year earlier. The birth rate of 15.4 was 3 percent lower than the rate of 15.8 for the preceding 12-month period. The fertility rate for the most recent 12-month period was 67.4, 2 percent lower than the rate for the 12 months ending with October 1993 (68.7). These lower rates continue the generally downward trend observed since early 1991.

Provisional Vital Statistics for the United States

[Rates for infant deaths are deaths under 1 year per 1,000 live births; fertility rates are live births per 1,000 women aged 15-44 years; all other rates are per 1,000 total population. Data are subject to monthly reporting variation; see Technical notes]

Item	October				January-October				12 months ending with October				
	Number		Rate		Number		Rate		Number		Rate		
	1994	1993	1994	1993	1994	1993	1994	1993	1994	1993	1994	1993	1992
Live births	342,000	344,000	15.4	15.6	3,357,000	3,400,000	15.5	15.8	3,996,000	4,057,000	15.4	15.8	16.1
Fertility rate	67.9	68.4	68.0	69.1	67.4	68.7	69.4
Deaths	190,000	188,000	8.6	8.5	1,914,000	1,886,000	8.8	8.8	2,296,000	2,247,000	8.8	8.7	8.6
Infant deaths	2,700	2,800	7.7	8.0	26,500	27,800	7.9	8.3	31,900	33,400	8.0	8.3	8.5
Natural increase	152,000	156,000	6.8	7.1	1,443,000	1,514,000	6.7	7.0	1,700,000	1,810,000	6.6	7.1	7.5
Marriages	226,000	218,000	10.2	9.9	2,012,000	1,987,000	9.3	9.3	2,359,000	2,345,000	9.1	9.1	9.3
Divorces	99,000	102,000	4.5	4.7	991,000	997,000	4.6	4.6	1,181,000	1,199,000	4.5	4.7	4.7
Population base (in millions)	261.4	258.7	260.2	257.4	254.6

NOTES: Figures include revisions received from the States. Twelve-month figures for the current year reflect revisions received for previous months, and figures for earlier years may differ from those previously published.



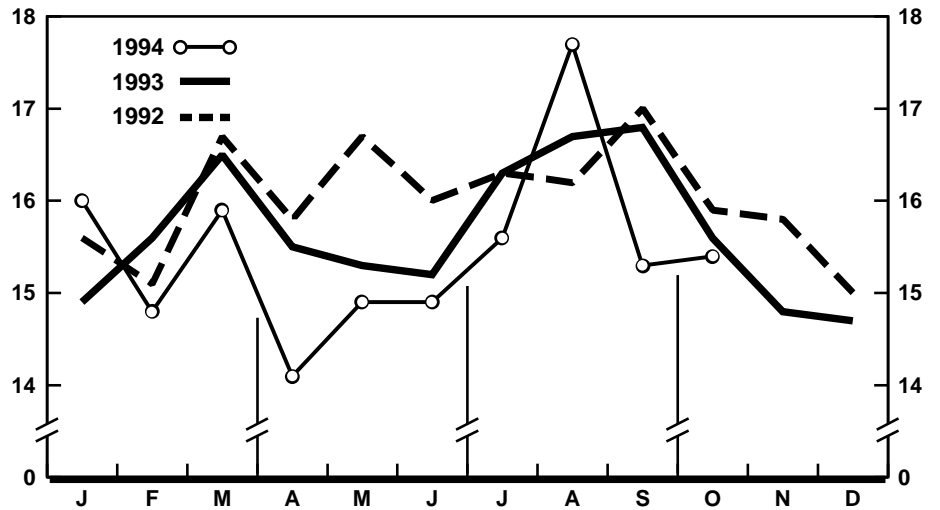
U.S. DEPARTMENT OF HEALTH AND HUMAN SERVICES
Public Health Service
Centers for Disease Control and Prevention
National Center for Health Statistics



Natural increase

As a result of natural increase, the excess of births over deaths, an estimated 152,000 people or 6.8 persons per 1,000 population were added to the population during October 1994.

For the 12-month period ending with October 1994, 1,700,000 persons were added to the population. This represented a rate of natural increase of 6.6, 7 percent lower than the rate of 7.1 for the preceding 12-month period. The decline in the rate of natural increase was due to a decrease in the birth rate and an increase in the death rate.



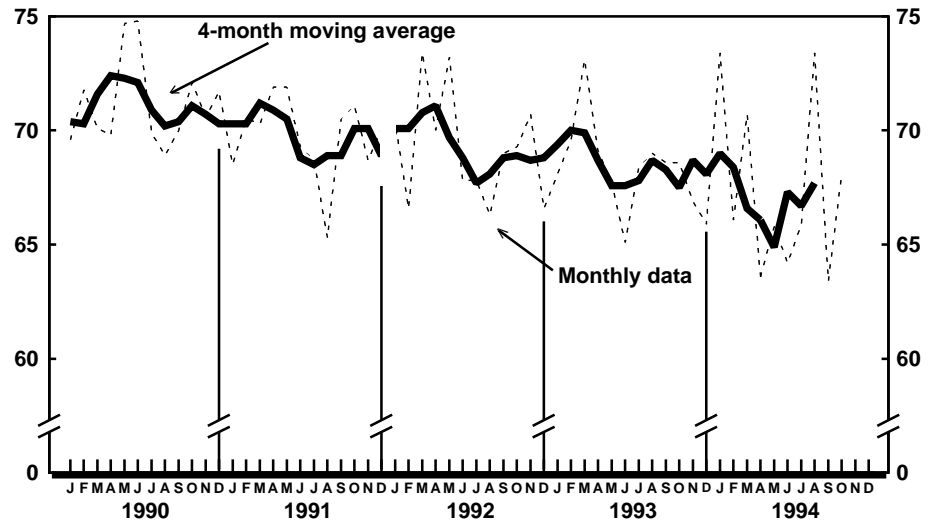
Provisional birth rates per 1,000 population by month: United States, 1992-94

Marriages

Approximately 226,000 couples married in October 1994, 4 percent more than in October a year earlier. The marriage rate for October increased 3 percent from 9.9 in 1993 to 10.2 in 1994.

For the first 10 months of 1994, there were an estimated 2,012,000 marriages, a 1-percent increase compared with the same period in 1993 (1,987,000). The marriage rate for the 10-month period was 9.3 in 1994 and in 1993.

For the 12-month period ending with October 1994, 2,359,000 marriages were performed, 1 percent more than for the same period a year earlier (2,345,000). The marriage rate was 9.1 for the current 12-month period and for the period ending with October 1993.



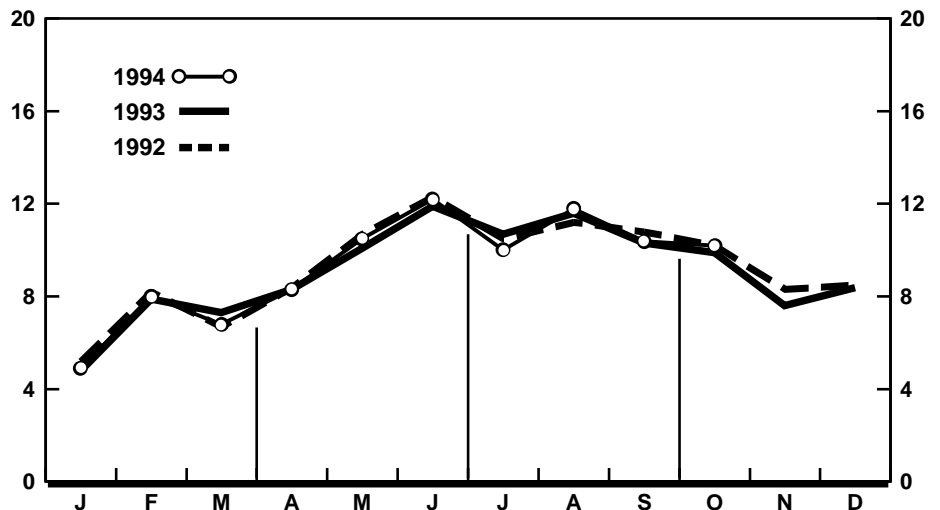
Provisional seasonally adjusted fertility rates per 1,000 women aged 15-44 years: United States, 1990-94

Divorces

The number of divorces granted in October 1994 (99,000) was 3 percent lower than the number for October 1993 (102,000). The divorce rate per 1,000 population for October was 4.5 in 1994, 4 percent lower than in 1993 (4.7).

An estimated 991,000 divorces were granted during the period of January-October 1994 compared with 997,000 a year earlier—a 1-percent decline. The divorce rate for the 10-month period in 1994 (4.6) remained unchanged from the previous year.

Divorces granted during the 12 months ending with October 1994 totaled 1,181,000, 2 percent fewer than for the



Provisional marriage rates per 1,000 population by month: United States, 1992-94

same period a year earlier (1,199,000). The divorce rate declined 4 percent from 4.7 for the 12-month period ending with October 1993 to 4.5 for the current period. This was the first drop in the divorce rate after a rate of 4.6 for 11 consecutive 12-month periods.

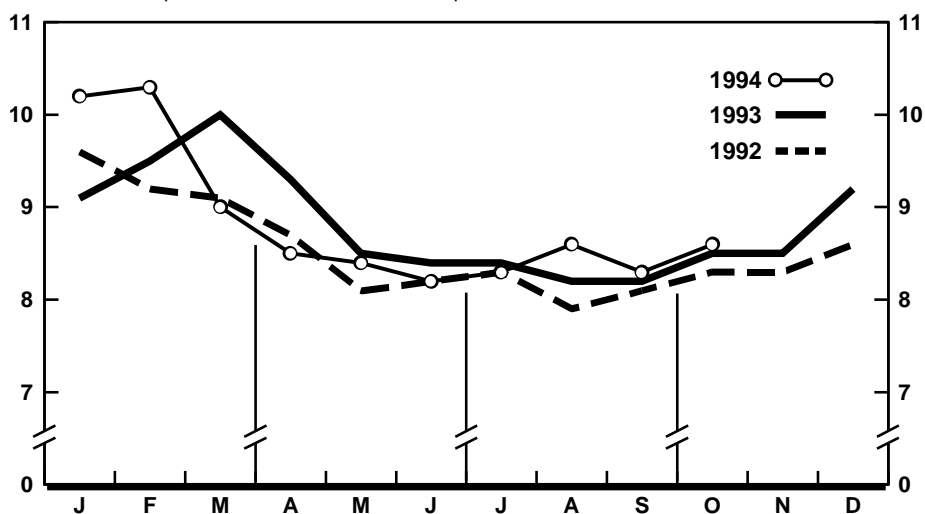
Deaths

For October 1994 there were an estimated 190,000 deaths in the United States. The death rate was 8.6 deaths per 1,000 population, 1 percent higher than the rate of 8.5 for October a year earlier. Among the 190,000 deaths for October 1994 were 2,700 deaths at ages under 1 year.

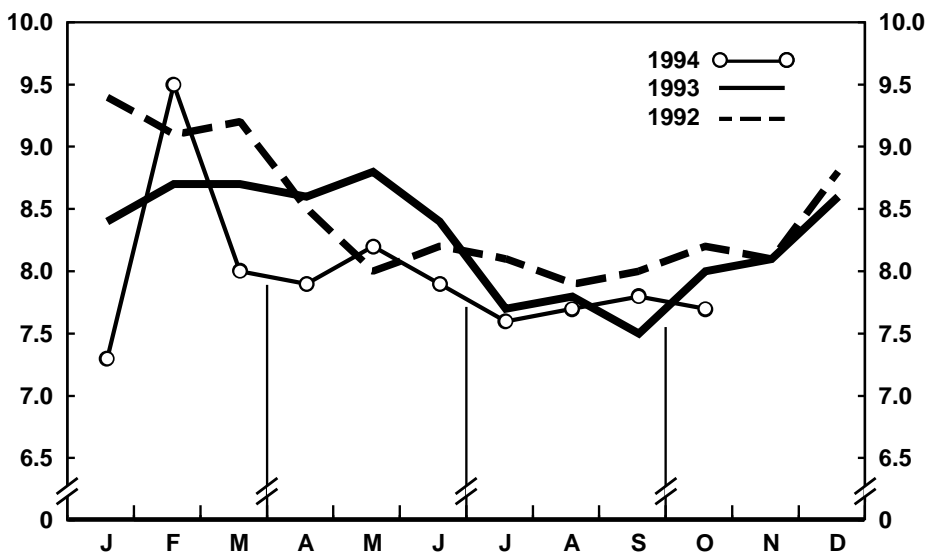
According to provisional statistics, there were 1,914,000 deaths during the first 10 months of 1994, 1 percent more than the number estimated for January–October 1993 (1,886,000). The death rate, 8.8 per 1,000 population, was the same as the rate for January–October 1993. Among the 1,914,000 deaths for January–October 1994 were 26,500 deaths at ages under 1 year, yielding an infant mortality rate of 7.9 per 1,000 live births. This rate was 5 percent lower than the rate of 8.3 for the first 10 months of 1993.

The death rate for the 12 months ending with October 1994 was 8.8 deaths per 1,000 population, 1 percent higher than the rate of 8.7 for the comparable 12-month period a year earlier. The infant mortality rate for this 12-month period was 8.0 per 1,000 live births, 4 percent lower than the rate of 8.3 for the 12 months ending with October 1993.

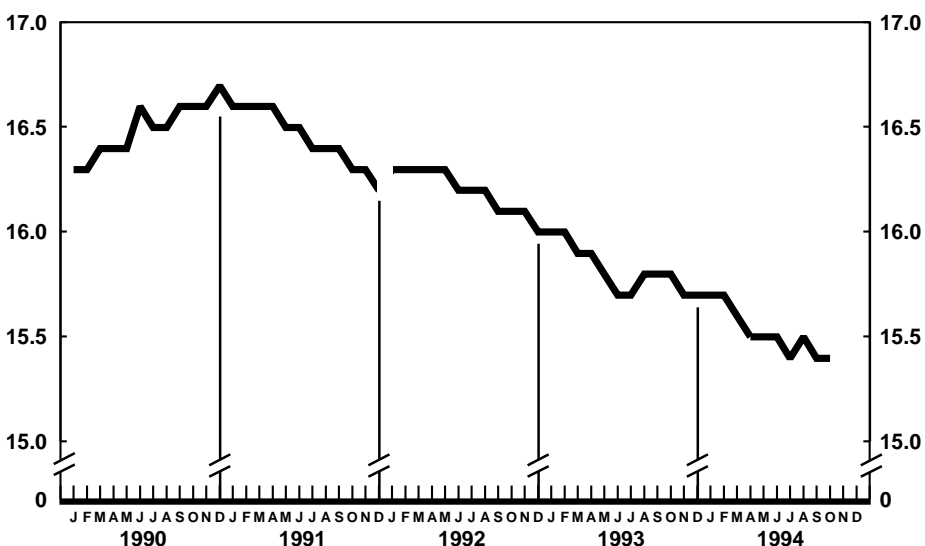
Current Mortality Sample, 12 months ending with September 1994—The provisional death rate for the 12 months ending with September 1994 was 882.0 per 100,000 population, 1 percent higher than the rate of 870.9 for the 12-month period ending September 1993. The provisional age-adjusted death rate for the 12-month period ending with September 1994 was 511.5 per 100,000 U.S. standard million population compared with a rate of 510.5 for the 12-month period ending with September 1993. The change in the age-adjusted death rate was not statistically significant. The age-adjusted death rates control for changes and



Provisional death rates per 1,000 population by month: United States, 1992–94



Provisional infant mortality rates per 1,000 live births by month: United States, 1992–94



Provisional birth rates per 1,000 population for successive 12-month periods ending with month indicated: United States, 1990–94

variations in the age composition of the population; therefore, they are better indicators than crude rates for showing changes in mortality risk over time and for showing differences between race-sex groups within the population. For the four race-sex groups, the changes in the estimated age-adjusted death rates were not statistically significant. By age the death rate for the total population increased for the age group 85 years and over.

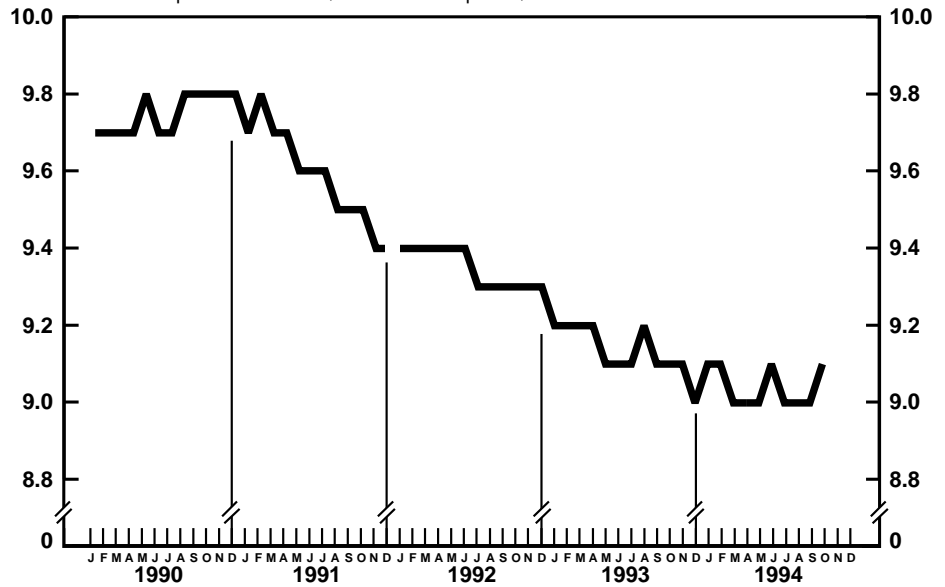
Among the major causes of death, the estimated death rate increased between the two successive 12-month periods for Malignant neoplasms of digestive organs and peritoneum, Chronic obstructive pulmonary diseases and allied conditions, Accidents and adverse effects, Pneumonia and influenza, and Human immunodeficiency virus infection. The death rate decreased between the two successive 12-month periods for Nephritis, nephrotic syndrome, and nephrosis.

The death rate for injury by firearms for the 12 months ending with September 1994 was 14.8 per 100,000 population, compared with a rate of 14.7 for the comparable 12-month period a year earlier. The change in the death rate for injury by firearms was not statistically significant.

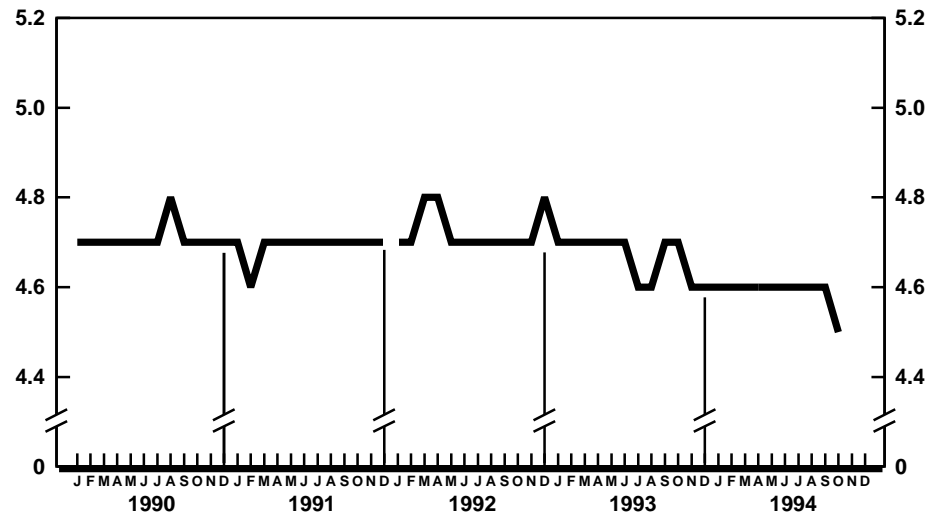
The infant mortality rate for the 12 months ending with September 1994 was 805.3 per 100,000 live births, 3 percent lower than the rate of 831.4 for the same 12-month period a year earlier. For infants under 28 days, the 12-month rate ending September 1994 was 512.8 compared with a rate of 523.1 for the 12-month period a year earlier. The infant mortality rate for infants 28 days to 11 months was 292.1 compared with a rate of 308.4 for the 12-month period a year earlier. The changes in the mortality rates for infants under 28 days and for those 28 days to 11 months were not statistically significant. Among causes of infant death, the infant mortality rate decreased between the two successive 12-month periods for Sudden infant death syndrome.

Mortality Surveillance System

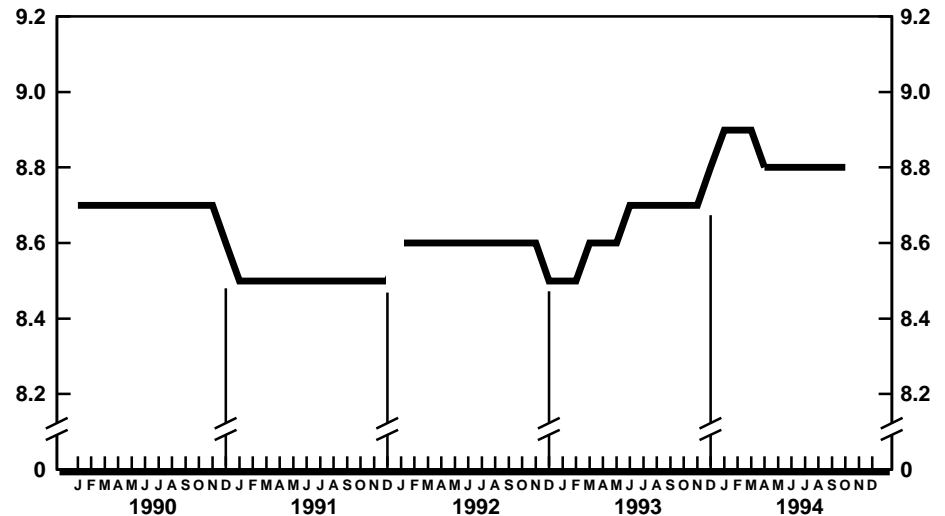
Discussed this month are recent trends in death rates for Suicide for males and females aged 25-44 and 45-74 years. In this issue final mortality data are ana-



Provisional marriage rates per 1,000 population for successive 12-month periods ending with month indicated: United States, 1990-94



Provisional divorce rates per 1,000 population for successive 12-month periods ending with month indicated: United States, 1990-94



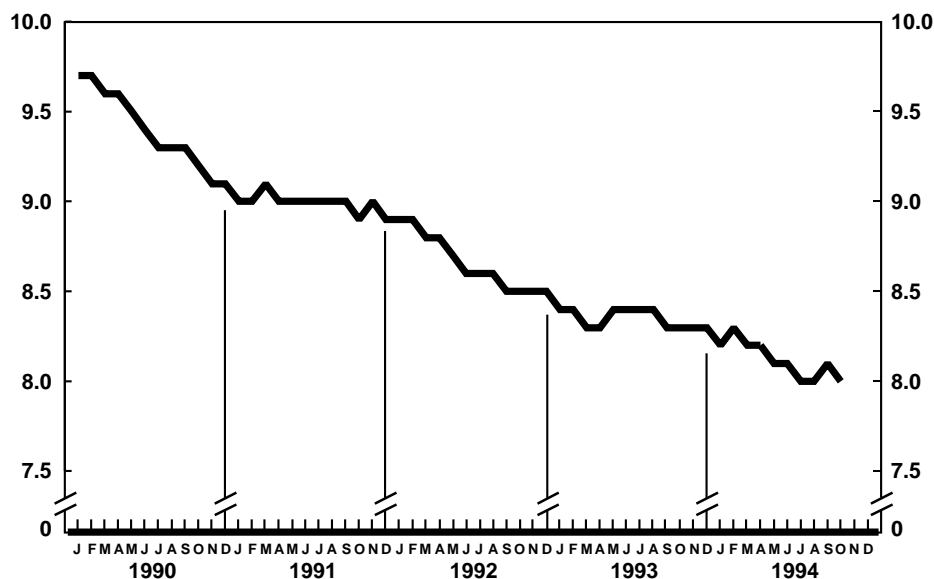
Provisional death rates per 1,000 population for successive 12-month periods ending with month indicated: United States, 1990-94

lyzed for data year 1992 and provisional data from January 1985 to June 1994.

In 1992, the latest year for which final mortality data are available, Suicide was the fifth leading cause of death for men aged 25–44 years and the sixth leading cause of death for women in the same age group. It accounted for 9,782 deaths or 9.2 percent of deaths from all causes for men in this age group and for 2,399 deaths or 5.5 percent of all deaths for women in this age group.

For ages 45–74 years, Suicide was the 9th leading cause of death for men and the 11th leading cause of death for women. It accounted for 7,817 deaths or 1.6 percent of deaths from all causes for men in this age group and for 2,344 deaths or 0.7 percent of all deaths for women in this age group.

Based on 1992 final data, the death rate for Suicide for men in the age group 45–74 years was approximately the same as the rate for men aged 25–44 years, while the rate for women in the older age group was 1.1 times the rate for the younger women. By contrast, Suicide deaths as a percentage of deaths from all causes were substantially lower for men and women in the older age group compared with men and women in the younger age group. For both age groups, the death rate for men was almost four times that for women. Trends based on provisional data for Suicide for these demographic groups are presented in the Mortality Surveillance System charts and accompanying text that follow.

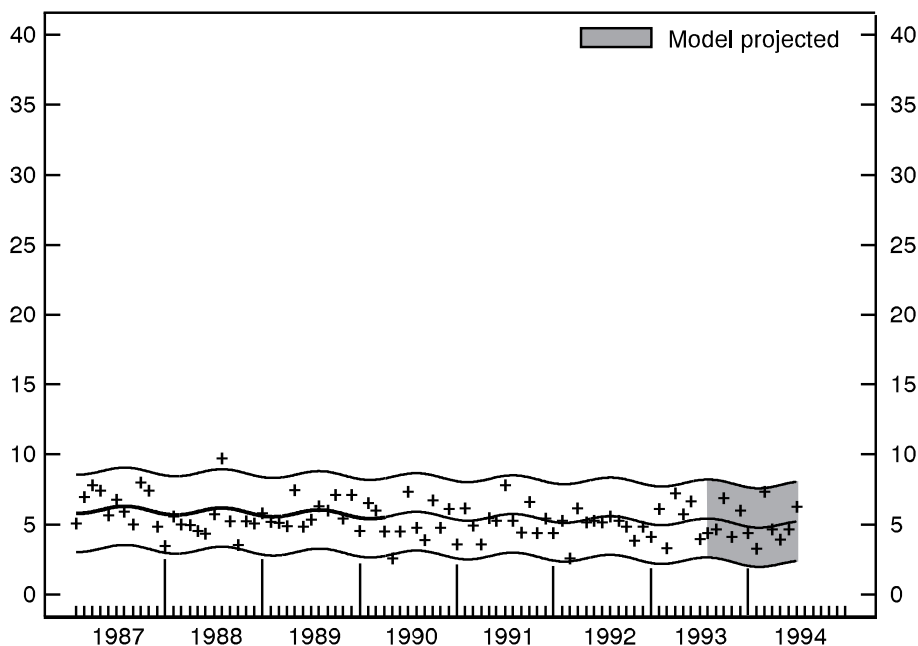


Provisional infant mortality rates per 1,000 live births for successive 12-month periods ending with month indicated: United States, 1990–94

Mortality Surveillance System charts

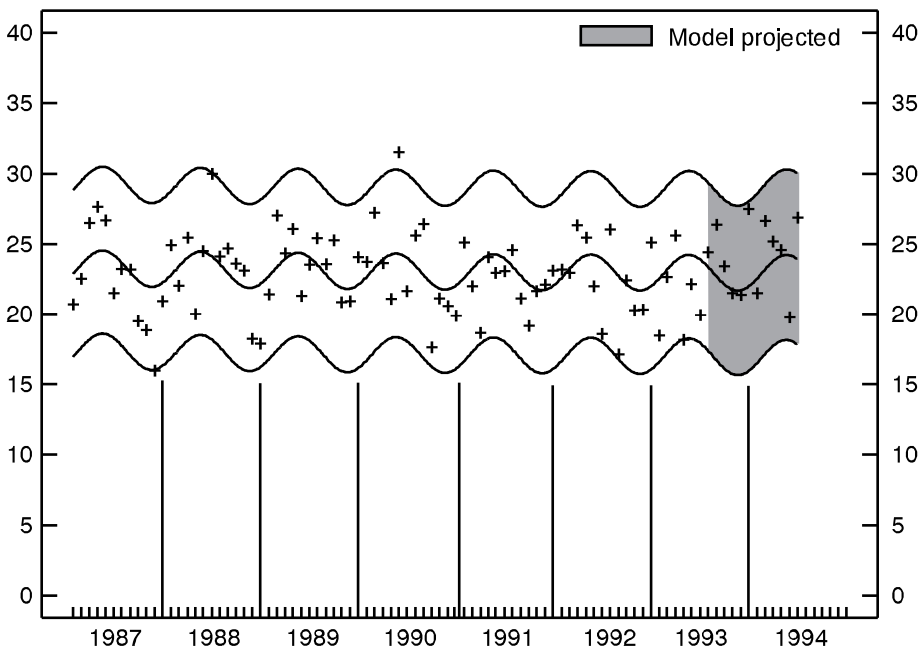
[Observed and fitted provisional monthly death rates and 95-percent prediction intervals. Model fitted using death rates for January 1985–June 1993; projected for July 1993–June 1994. See Technical notes]

Trends in mortality from Suicide are presented in the charts below. Reduction of mortality from Suicide is addressed in *Healthy People 2000* (objectives 6.1 and 7.2) (1).



Provisional death rates per 100,000 females 25–44 years of age for Suicide by month: United States, 1987–94

- For the modeled period, provisional death rates decreased slightly.
- For the projection period, observed provisional monthly death rates fell within 95-percent prediction intervals.
- Mortality shows a seasonal pattern with death rates higher in summer.



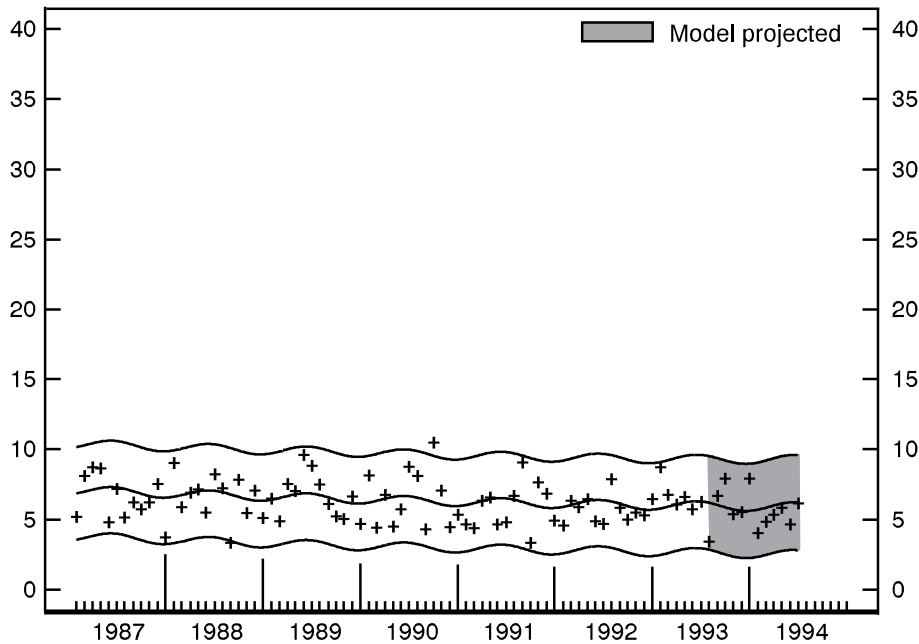
Provisional death rates per 100,000 males 25–44 years of age for Suicide by month: United States, 1987–94

- For the modeled period, provisional death rates showed no discernible upward or downward trend.
- For the projection period, observed provisional monthly death rates fell within 95-percent prediction intervals.
- Mortality shows a seasonal pattern with death rates higher in spring.

Mortality Surveillance System charts—Con.

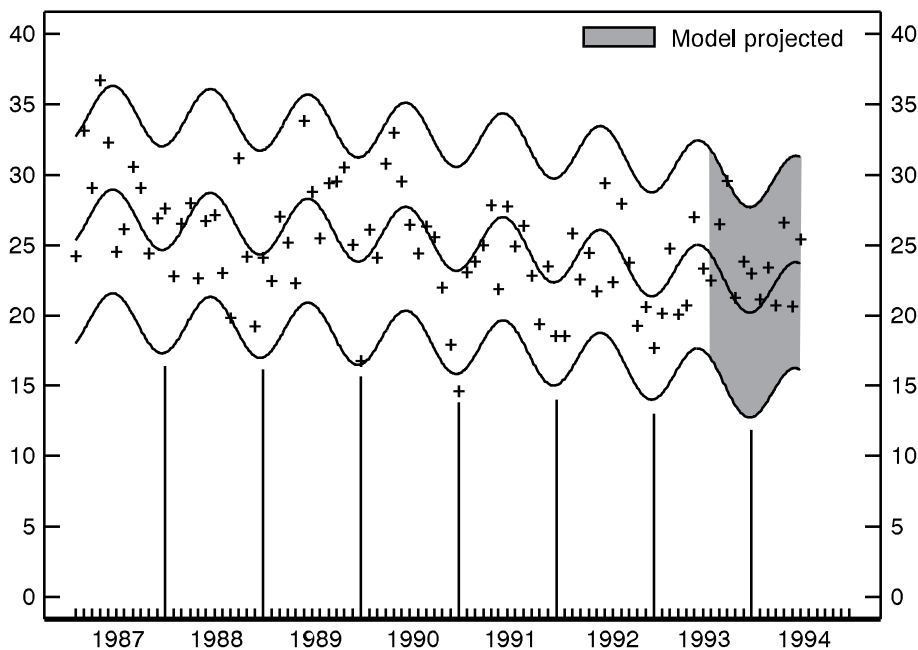
[Observed and fitted provisional monthly death rates and 95-percent prediction intervals. Model fitted using death rates for January 1985–June 1993; projected for July 1993–June 1994. See Technical notes]

Trends in mortality from Suicide are presented in the charts below. Reduction of mortality from Suicide is addressed in *Healthy People 2000* (objectives 6.1 and 7.2) (1).



Provisional death rates per 100,000 females 45–74 years of age for Suicide by month: United States, 1987–94

- For the modeled period, provisional death rates decreased slightly.
- For the projection period, observed provisional monthly death rates fell within 95-percent prediction intervals.
- Mortality shows a seasonal pattern with death rates higher in spring.

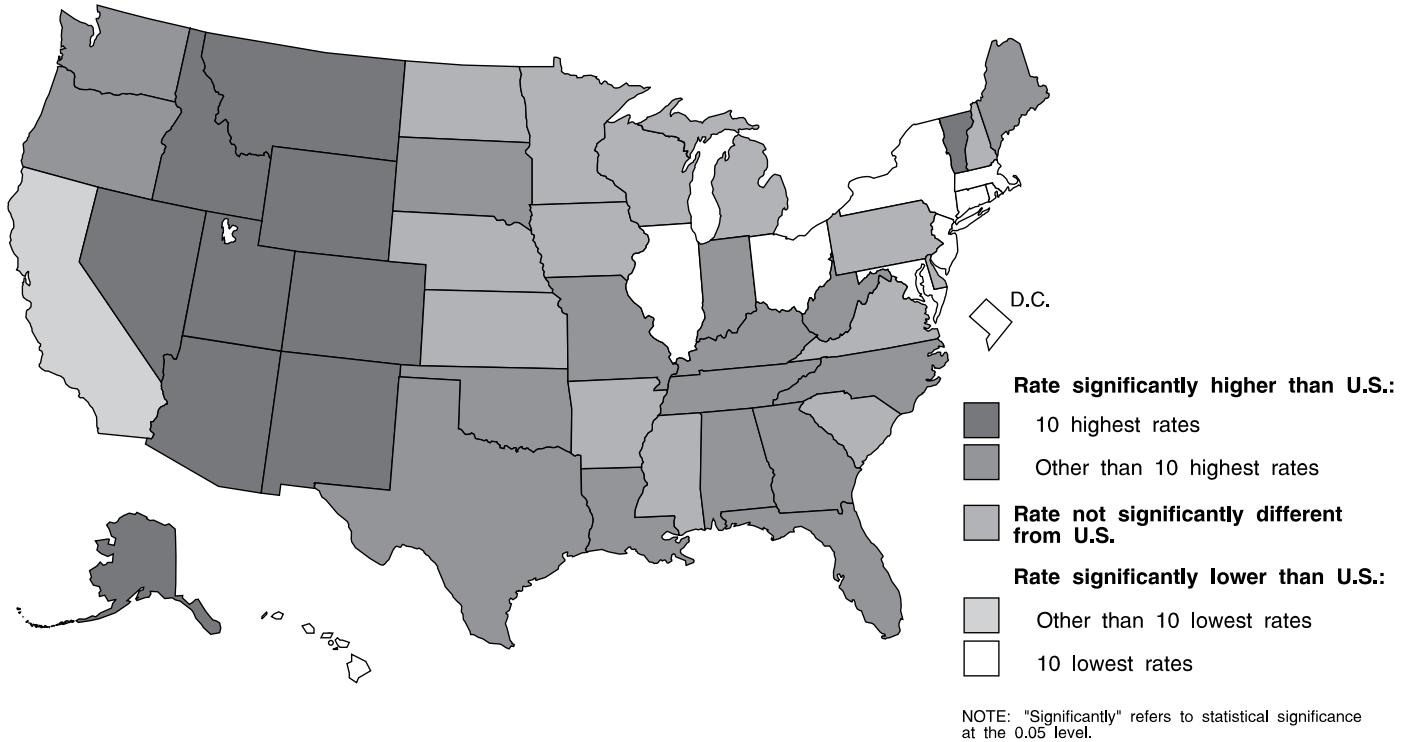


Provisional death rates per 100,000 males 45–74 years of age for Suicide by month: United States, 1987–94

- For the modeled period, provisional death rates decreased.
- For the projection period, observed provisional monthly death rates, except for one, fell within 95-percent prediction intervals.
- Mortality shows a seasonal pattern with death rates higher in summer.

Final 3-year total number of deaths and average annual age-adjusted death rates and 95-percent confidence limits for Suicide for males: United States and each State, 1989–91

[Data are final by State of residence]

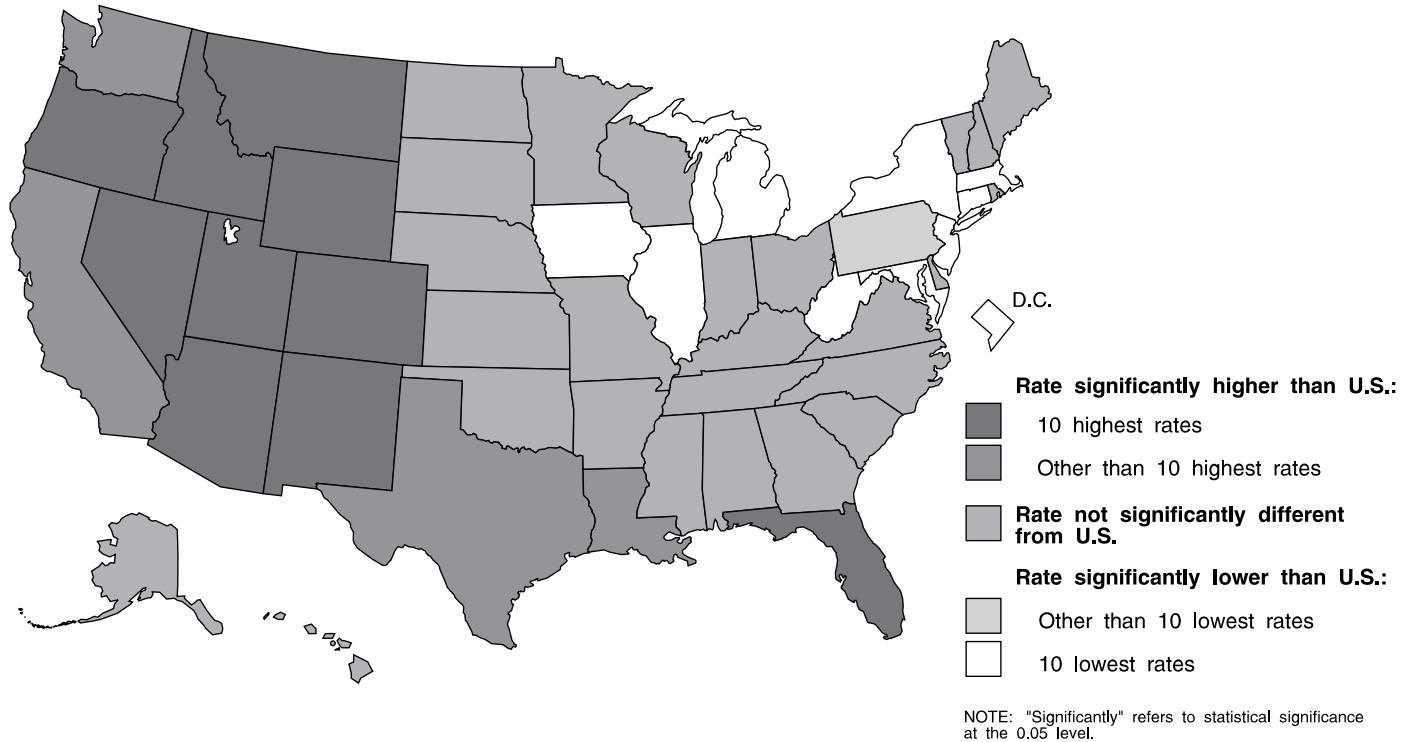


Area	Deaths, 3-year total (final)	Age-adjusted rate (final)	95-percent confidence limits		Area	Deaths, 3-year total (final)	Age-adjusted rate (final)	95-percent confidence limits	
			Lower	Upper				Lower	Upper
United States	73,595	18.9	18.8	19.0	South Atlantic—Con.				
New England					West Virginia	594	†20.9	19.2	22.6
Maine	408	†21.3	19.2	23.4	North Carolina	2,110	††20.3	19.4	21.2
New Hampshire	326	19.0	16.9	21.1	South Carolina	1,048	19.7	18.5	20.9
Vermont	225	††25.5	22.1	28.9	Georgia	2,137	††21.9	21.0	22.8
Massachusetts	1,180	††12.6	11.9	13.3	Florida	4,931	††22.5	21.8	23.2
Rhode Island	247	††16.0	14.0	18.0	East South Central				
Connecticut	752	††14.5	13.4	15.6	Kentucky	1,249	††21.6	20.4	22.8
Middle Atlantic					Tennessee	1,594	††20.8	19.8	21.8
New York	3,631	††13.0	12.6	13.4	Alabama	1,266	†20.3	19.2	21.4
New Jersey	1,313	††10.7	10.1	11.3	Mississippi	727	18.9	17.5	20.3
Pennsylvania	3,473	18.6	18.0	19.2	West South Central				
East North Central					Arkansas	680	18.5	17.1	19.9
Ohio	2,908	††17.4	16.8	18.0	Louisiana	1,315	††21.3	20.1	22.5
Indiana	1,716	††20.2	19.2	21.2	Oklahoma	1,015	†20.5	19.2	21.8
Illinois	2,789	††15.7	15.1	16.3	Texas	5,226	††20.4	19.8	21.0
Michigan	2,654	18.5	17.8	19.2	Mountain				
Wisconsin	1,467	19.2	18.2	20.2	Montana	396	††31.5	28.3	34.7
West North Central					Idaho	423	††27.0	24.3	29.7
Minnesota	1,263	19.2	18.1	20.3	Wyoming	201	††29.2	25.1	33.3
Iowa	825	18.8	17.5	20.1	Colorado	1,340	††26.2	24.8	27.6
Missouri	1,702	††21.3	20.3	22.3	New Mexico	695	††30.8	28.5	33.1
North Dakota	187	19.0	16.2	21.8	Arizona	1,664	††28.7	27.3	30.1
South Dakota	227	††21.9	18.9	24.9	Utah	622	††26.3	24.2	28.4
Nebraska	471	19.6	17.8	21.4	Nevada	704	††35.2	32.5	37.9
Kansas	730	18.9	17.5	20.3	Pacific				
South Atlantic					Washington	1,589	††20.3	19.3	21.3
Delaware	198	19.0	16.3	21.7	Oregon	1,076	††23.5	22.0	25.0
Maryland	1,180	††15.9	15.0	16.8	California	8,625	††18.2	17.8	18.6
District of Columbia	101	††10.7	8.6	12.8	Alaska	202	††24.3	20.8	27.8
Virginia	1,923	19.7	18.8	20.6	Hawaii	270	††14.9	13.1	16.7

NOTES: Data are final. Rates per 100,000 U.S. standard million population; see Technical notes. The symbols † and †† denote statistical significance of the difference between the U.S. and State rates at the 0.05 and 0.01 levels, respectively. For method of computation of rates, confidence limits, and tests of statistical significance, see Technical notes.

Final 3-year total number of deaths and average annual age-adjusted death rates and 95-percent confidence limits for Suicide for females: United States and each State, 1989–91

[Data are final by State of residence]



Area	Deaths, 3-year total (final)	Age-adjusted rate (final)	95-percent confidence limits		Area	Deaths, 3-year total (final)	Age-adjusted rate (final)	95-percent confidence limits	
			Lower	Upper				Lower	Upper
United States	18,353	4.5	4.4	4.6	South Atlantic—Con.				
New England					West Virginia	96	††3.3	2.6	4.0
Maine	94	4.8	3.8	5.8	North Carolina	534	4.9	4.5	5.3
New Hampshire	79	4.4	3.4	5.4	South Carolina	230	4.1	3.6	4.6
Vermont	45	5.1	3.7	6.8	Georgia	491	4.7	4.3	5.1
Massachusetts	328	††3.2	2.8	3.6	Florida	1,326	††5.7	5.4	6.0
Rhode Island	62	4.0	3.0	5.0	East South Central				
Connecticut	180	††3.1	2.6	3.6	Kentucky	272	4.4	3.9	4.9
Middle Atlantic					Tennessee	373	4.5	4.0	5.0
New York	1,025	††3.2	3.0	3.4	Alabama	293	4.3	3.8	4.8
New Jersey	270	††2.0	1.8	2.2	Mississippi	201	4.7	4.0	5.4
Pennsylvania	827	††4.1	3.8	4.4	West South Central				
East North Central					Arkansas	142	3.9	3.2	4.6
Ohio	752	4.2	3.9	4.5	Louisiana	343	†5.1	4.5	5.7
Indiana	393	4.4	4.0	4.8	Oklahoma	235	4.7	4.1	5.3
Illinois	729	††3.9	3.6	4.2	Texas	1,355	††5.1	4.8	5.4
Michigan	606	††4.0	3.7	4.3	Mountain				
Wisconsin	323	4.3	3.8	4.8	Montana	93	††7.6	6.0	9.2
West North Central					Idaho	94	††6.3	5.0	7.6
Minnesota	309	4.7	4.2	5.2	Wyoming	49	††7.4	5.5	9.8
Iowa	161	††3.4	2.8	4.0	Colorado	326	††6.0	5.3	6.7
Missouri	385	4.5	4.0	5.0	New Mexico	169	††7.1	6.0	8.2
North Dakota	30	3.2	2.2	4.6	Arizona	355	††6.1	5.4	6.8
South Dakota	49	4.6	3.4	6.1	Utah	139	††5.9	4.9	6.9
Nebraska	114	4.6	3.7	5.5	Nevada	166	††8.4	7.1	9.7
Kansas	162	4.3	3.6	5.0	Pacific				
South Atlantic					Washington	428	††5.6	5.1	6.1
Delaware	56	4.7	3.4	6.0	Oregon	296	††6.2	5.5	6.9
Maryland	260	††3.1	2.7	3.5	California	2,503	††5.2	5.0	5.4
District of Columbia	21	††1.7	1.1	2.6	Alaska	30	4.3	2.9	6.1
Virginia	483	4.7	4.3	5.1	Hawaii	71	4.0	3.0	5.0

NOTES: Data are final. Rates per 100,000 U.S. standard million population; see Technical notes. The symbols † and †† denote statistical significance of the difference between the U.S. and State rates at the 0.05 and 0.01 levels, respectively. For method of computation of rates, confidence limits, and tests of statistical significance, see Technical notes.

Table 1. Provisional number of live births, marriages, divorces, deaths, and infant deaths and rates, by month: United States, January 1993–October 1994

[Data are provisional and are subject to monthly reporting variation; see Technical notes]

Period	Live births				Marriages		Divorces		Deaths		Infant deaths	
	Number	Rate per 1,000 women aged 15–44 years			Number	Rate per 1,000 population	Number	Rate per 1,000 population	Number	Rate per 1,000 population	Number	Rate per 1,000 live births
		Rate per 1,000 population	Unadjusted	Seasonally adjusted ¹								
1993:												
January	325,000	14.9	64.7	68.1	103,000	4.8	92,000	4.2	198,000	9.1	2,800	8.4
February	308,000	15.6	68.0	69.6	154,000	7.9	87,000	4.4	187,000	9.5	2,700	8.7
March	360,000	16.5	71.7	73.1	157,000	7.3	113,000	5.2	217,000	10.0	3,000	8.7
April	328,000	15.5	67.5	69.1	174,000	8.3	98,000	4.6	196,000	9.3	2,800	8.6
May	335,000	15.3	66.8	67.7	221,000	10.1	103,000	4.7	185,000	8.5	2,900	8.8
June	321,000	15.2	66.1	65.1	252,000	11.9	101,000	4.8	178,000	8.4	2,700	8.4
July	357,000	16.3	71.2	68.4	235,000	10.7	100,000	4.6	184,000	8.4	2,700	7.7
August	367,000	16.7	73.0	69.0	254,000	11.6	100,000	4.6	180,000	8.2	2,700	7.8
September	356,000	16.8	73.3	68.6	218,000	10.3	101,000	4.8	174,000	8.2	2,600	7.5
October	344,000	15.6	68.4	68.6	218,000	9.9	102,000	4.7	188,000	8.5	2,800	8.0
November	316,000	14.8	64.9	66.9	162,000	7.6	94,000	4.4	180,000	8.5	2,600	8.1
December	323,000	14.7	64.3	65.9	185,000	8.4	96,000	4.4	202,000	9.2	2,800	8.6
1994:												
January	352,000	16.0	69.9	73.4	107,000	4.9	97,000	4.4	224,000	10.2	2,500	7.3
February	294,000	14.8	64.8	66.1	156,000	8.0	89,000	4.5	204,000	10.3	2,900	9.5
March	351,000	15.9	69.7	70.7	147,000	6.8	103,000	4.7	199,000	9.0	2,700	8.0
April	302,000	14.1	62.0	63.6	175,000	8.3	100,000	4.7	182,000	8.5	2,500	7.9
May	329,000	14.9	65.4	65.8	232,000	10.5	104,000	4.7	186,000	8.4	2,700	8.2
June	320,000	14.9	65.6	64.2	262,000	12.2	103,000	4.8	176,000	8.2	2,500	7.9
July	346,000	15.6	68.7	65.9	222,000	10.0	98,000	4.4	184,000	8.3	2,600	7.6
August	392,000	17.7	77.8	73.4	261,000	11.8	99,000	4.5	190,000	8.6	2,800	7.7
September	329,000	15.3	67.4	63.4	224,000	10.4	99,000	4.6	178,000	8.3	2,500	7.8
October	342,000	15.4	67.9	68.1	226,000	10.2	99,000	4.5	190,000	8.6	2,700	7.7

¹The method of seasonal adjustment, developed by the U.S. Bureau of the Census, is described in *The X-11 Variant of the Census Method II Seasonal Adjustment Program*, Technical Paper No. 15 (1967 revision).

NOTES: Figures include all revisions received from the States and, therefore, may differ from those previously published.

Symbols

- - - Data not available
- . . . Category not applicable
- Quantity zero
- 0.0 Quantity more than zero but less than 0.05
- * Figure does not meet standards of reliability or precision (see Technical notes)

Table 2. Provisional number of live births and deaths: each division and State, October 1993 and 1994, and cumulative figures, 1992–94

[Data are estimates by State of residence; see Technical notes]

Area	Live births					Deaths				
	October		January–October			October		January–October		
	1994	1993	1994	1993	1992	1994	1993	1994	1993	1992
New England	15,772	15,784	148,178	154,252	160,617	11,307	10,905	98,619	100,067	95,889
Maine	1,403	1,254	12,244	11,968	12,575	581	1,099	9,791	9,398	9,035
New Hampshire	1,787	1,131	12,366	12,723	12,996	857	721	7,459	7,435	6,822
Vermont	435	746	5,730	6,366	6,297	304	389	3,771	4,091	3,956
Massachusetts	8,254	5,509	71,574	73,170	76,846	6,360	5,113	46,271	47,302	45,093
Rhode Island	1,091	1,118	11,300	12,003	12,240	794	820	7,674	8,102	7,757
Connecticut	2,802	6,026	34,964	38,022	39,663	2,411	2,763	23,653	23,739	23,226
Middle Atlantic	50,481	48,694	463,534	470,457	479,454	32,779	30,736	308,453	308,504	299,184
New York	25,098	24,496	232,622	235,650	243,204	15,775	15,055	141,509	143,524	137,915
New Jersey	11,326	11,120	97,593	100,004	96,092	6,133	5,526	59,753	60,247	58,924
Pennsylvania	14,057	13,078	133,319	134,803	140,158	10,871	10,155	107,191	104,733	102,345
East North Central	52,864	54,072	539,492	547,035	549,818	31,800	32,750	328,538	320,916	308,217
Ohio	13,452	13,060	135,720	134,061	141,627	7,772	8,402	87,814	84,203	82,621
Indiana	7,432	8,734	69,043	71,662	70,650	4,871	4,395	44,832	42,900	41,506
Illinois	15,812	14,903	158,102	159,165	160,300	8,964	9,187	89,236	88,902	84,128
Michigan	10,859	12,074	118,606	123,688	118,416	6,545	6,967	69,275	68,372	65,815
Wisconsin	5,309	5,301	58,021	58,459	58,825	3,648	3,799	37,381	36,539	34,147
West North Central	23,034	22,544	213,107	218,701	220,427	14,388	14,932	141,891	143,422	133,626
Minnesota	5,345	5,397	54,539	54,105	55,372	3,087	3,227	30,261	30,183	28,847
Iowa	3,299	3,106	30,292	30,679	31,912	2,127	2,184	21,906	23,746	22,361
Missouri	8,251	7,970	64,794	65,963	63,956	5,098	5,358	47,212	47,085	41,236
North Dakota	728	727	7,243	7,374	7,504	527	527	4,956	4,845	4,820
South Dakota	795	892	8,865	9,195	9,498	548	559	5,650	5,681	5,777
Nebraska	1,645	1,900	18,967	19,036	19,637	1,216	1,262	12,210	12,437	12,253
Kansas	2,971	2,552	28,407	32,349	32,548	1,785	1,815	19,696	19,445	18,332
South Atlantic	55,655	57,289	552,873	563,356	568,287	34,672	33,633	358,460	350,241	336,828
Delaware	995	757	8,687	8,821	9,222	462	474	5,112	5,059	4,887
Maryland	5,793	6,390	58,931	63,502	63,741	3,145	3,159	32,518	34,796	31,005
District of Columbia	651	857	7,767	8,301	8,467	333	333	5,429	5,698	5,741
Virginia	8,358	7,880	79,410	80,698	82,375	4,544	4,371	45,042	43,082	41,070
West Virginia	1,698	1,820	18,473	18,574	19,021	1,551	1,579	16,966	16,649	16,927
North Carolina	8,005	8,735	85,981	83,769	86,154	5,339	5,173	54,150	52,190	49,411
South Carolina	3,462	4,982	43,176	46,716	47,277	3,025	2,994	26,675	26,559	25,593
Georgia	8,881	9,658	91,224	94,144	94,281	4,372	4,150	47,721	46,579	44,758
Florida	17,812	16,210	159,224	158,831	157,749	11,901	10,913	124,847	119,629	117,436
East South Central	18,984	22,090	192,278	195,613	196,475	12,715	13,101	130,425	129,181	123,452
Kentucky	4,624	4,009	43,902	43,726	45,487	3,001	3,001	31,575	30,824	29,534
Tennessee	5,635	9,022	62,451	63,339	61,929	3,892	4,381	40,657	41,076	39,764
Alabama	5,545	5,472	51,076	53,599	53,092	3,603	3,564	35,791	35,192	33,185
Mississippi	3,180	3,587	34,849	34,949	35,967	2,219	2,155	22,402	22,089	20,969
West South Central	41,632	37,569	398,078	406,511	406,175	18,508	18,534	200,611	196,908	189,433
Arkansas	2,951	2,906	28,911	28,871	29,304	2,411	2,230	22,516	22,139	21,150
Louisiana	5,599	5,199	56,863	58,232	61,617	3,246	3,093	34,603	34,403	32,364
Oklahoma	3,492	3,732	38,320	38,802	40,094	2,569	2,609	27,082	26,870	25,271
Texas ¹	29,590	25,732	273,984	280,606	275,160	10,282	10,602	116,410	113,496	110,648
Mountain	19,582	23,380	205,929	208,626	206,838	8,299	8,519	94,390	90,711	85,983
Montana	896	1,053	9,249	9,702	9,834	620	635	6,182	6,272	5,953
Idaho	1,449	1,029	14,694	14,309	14,695	713	647	7,079	6,873	6,711
Wyoming	541	525	5,403	5,463	5,796	289	306	2,918	2,923	2,769
Colorado	4,371	4,229	45,683	46,350	45,999	2,028	1,776	20,237	19,397	18,392
New Mexico	2,777	2,305	23,505	22,688	23,406	1,098	802	10,171	9,705	9,612
Arizona	4,893	6,115	56,156	59,360	56,591	2,041	2,571	29,232	28,323	26,005
Utah	3,024	3,434	32,438	31,313	31,847	825	892	8,729	8,373	8,159
Nevada	1,631	4,690	18,801	19,441	18,670	685	890	9,842	8,845	8,382
Pacific	71,405	70,448	625,972	613,084	618,652	25,917	24,398	252,651	245,916	243,100
Washington	7,802	6,586	67,128	59,140	57,212	2,612	2,964	31,895	34,585	31,335
Oregon	3,190	4,156	35,653	36,975	35,500	2,479	2,479	23,351	22,813	21,254
California ¹	57,788	57,061	496,385	491,945	499,412	20,064	18,134	189,380	180,583	182,905
Alaska	875	951	10,591	8,738	9,890	127	213	1,950	1,891	1,864
Hawaii	1,750	1,694	16,215	16,286	16,638	635	608	6,075	6,044	5,742

¹Figures include adjustments for varying length of reporting periods; see Technical notes.

NOTES: Figures include all revisions received from the States. Cumulative figures for the current year reflect revisions received for previous months, and figures for earlier years may differ from those previously published.

Table 3. Provisional number of marriages and divorces: each division and State, October 1993 and 1994, and cumulative figures, 1992-94

[By State of occurrence. Number of events reported; see Technical notes. Divorces include reported annulments]

Area	Marriages					Divorces				
	October		January-October			October		January-October		
	1994	1993	1994	1993	1992	1994	1993	1994	1993	1992
New England	13,206	9,345	91,639	75,847	83,778	3,140	3,618	32,211	35,845	38,797
Maine	1,167	1,301	9,356	9,349	9,816	400	202	4,386	4,631	5,156
New Hampshire	1,369	957	8,718	6,276	6,985	459	447	4,189	4,132	4,673
Vermont	669	774	4,778	5,111	4,907	52	210	2,035	2,335	2,530
Massachusetts	5,922	2,138	43,402	28,650	34,113	1,157	1,666	11,143	13,328	14,296
Rhode Island	965	971	6,117	6,279	6,453	247	271	2,687	2,893	3,000
Connecticut	3,114	3,204	19,268	20,182	21,504	825	822	7,771	8,526	9,142
Middle Atlantic	30,633	29,360	229,375	237,141	245,159	10,894	10,330	100,020	101,083	102,258
New York ¹	14,877	13,616	119,812	125,003	129,999	5,432	5,348	46,871	47,373	47,195
New Jersey	6,827	6,627	45,137	45,676	47,439	2,046	1,965	20,167	20,828	21,660
Pennsylvania	8,929	9,117	64,426	66,462	67,721	3,416	3,017	32,982	32,882	33,403
East North Central	39,165	33,878	293,624	289,829	295,734	² 12,116	² 12,858	² 123,506	² 125,998	² 126,261
Ohio	11,998	9,374	77,995	75,182	78,368	4,561	4,560	41,418	42,189	43,217
Indiana	5,440	5,139	43,033	43,066	42,564	---	---	---	---	---
Illinois	9,398	8,477	78,765	77,202	79,691	3,183	3,505	34,889	36,334	34,734
Michigan	8,048	8,325	61,472	61,381	61,519	2,763	3,447	32,674	32,798	32,989
Wisconsin	4,281	2,563	32,359	32,998	33,592	1,609	1,346	14,525	14,677	15,321
West North Central	13,800	14,467	127,069	128,013	126,227	8,224	6,911	65,045	65,474	63,862
Minnesota	3,329	3,469	28,840	28,505	28,675	1,387	1,362	13,379	14,019	13,234
Iowa	2,306	2,506	19,604	21,824	18,851	892	1,059	9,344	9,024	9,068
Missouri	3,775	3,930	37,964	37,801	38,190	2,287	2,567	22,541	22,631	21,364
North Dakota	395	417	4,258	4,328	4,239	185	186	1,838	1,856	1,945
South Dakota	610	523	6,652	6,584	6,607	256	199	2,455	2,389	2,415
Nebraska	849	942	10,852	10,884	11,305	485	500	5,457	5,254	5,501
Kansas	2,536	2,680	18,899	18,087	18,360	2,732	1,038	10,031	10,301	10,335
South Atlantic	38,086	35,405	372,419	369,879	368,530	18,493	18,219	193,328	195,030	199,591
Delaware	501	574	4,251	4,317	4,312	393	281	2,948	2,619	2,824
Maryland	4,984	4,291	36,619	36,188	35,400	1,195	1,248	14,182	14,033	14,561
District of Columbia	160	458	2,209	2,209	2,326	153	213	1,881	1,538	2,201
Virginia	6,415	6,047	58,894	58,401	59,030	2,393	2,458	24,542	24,441	24,439
West Virginia	891	1,018	8,961	11,327	10,513	862	964	7,555	7,972	7,887
North Carolina	5,388	4,403	42,518	40,328	41,062	2,735	2,616	30,753	29,198	30,361
South Carolina	3,976	4,212	43,952	44,825	45,427	1,360	1,077	12,754	12,902	13,523
Georgia	5,361	5,192	53,287	52,582	54,050	2,703	2,849	30,839	31,751	33,221
Florida	10,410	9,210	121,728	119,702	116,410	6,699	6,513	67,874	70,576	70,574
East South Central	15,257	15,849	158,688	154,702	154,579	8,099	8,205	82,566	80,271	82,732
Kentucky	3,878	3,614	39,968	38,596	41,464	1,799	1,684	19,006	18,338	20,102
Tennessee	6,149	7,144	65,710	62,523	60,041	3,089	2,870	28,239	27,812	27,682
Alabama	3,456	3,442	34,275	33,964	34,287	2,395	2,155	22,552	22,859	23,022
Mississippi	1,774	1,649	18,735	19,619	18,787	816	1,496	12,769	11,262	11,926
West South Central	20,461	22,792	251,933	243,456	241,592	² 11,271	² 12,575	² 117,957	² 118,805	² 119,829
Arkansas	2,763	3,135	31,981	31,204	30,454	1,219	1,507	14,748	14,656	15,308
Louisiana	3,053	1,506	34,795	29,361	30,249	---	---	---	---	---
Oklahoma	2,097	2,267	24,868	25,660	26,777	1,934	2,355	18,220	19,110	20,297
Texas ³	12,548	15,884	160,289	157,231	154,112	8,118	8,713	84,989	85,039	84,224
Mountain	20,839	20,424	229,720	216,120	206,479	² 6,094	² 6,022	² 63,092	² 64,095	² 65,734
Montana	496	440	6,135	6,192	6,279	350	335	3,424	3,635	3,582
Idaho	1,732	1,527	13,478	11,945	12,346	553	485	5,897	5,794	5,713
Wyoming	218	290	4,073	3,914	4,082	244	248	2,498	2,497	2,653
Colorado	2,035	2,169	29,371	28,972	29,257	1,403	1,572	15,889	15,869	16,215
New Mexico ^{4,5}	849	874	10,575	10,755	11,172	825	702	8,330	8,394	8,148
Arizona ¹	2,528	3,423	30,380	33,142	29,921	2,023	2,002	19,403	20,694	21,363
Utah	1,876	1,858	17,895	17,859	17,664	696	678	7,651	7,212	8,060
Nevada	11,105	9,843	117,813	103,341	95,758	---	---	---	---	---
Pacific	30,837	31,214	252,878	250,447	276,445	² 3,841	² 6,511	² 45,038	² 42,466	² 43,872
Washington	3,854	5,101	36,577	34,363	37,647	1,902	4,231	24,723	22,305	23,459
Oregon	2,000	2,250	21,761	20,822	19,873	1,250	1,250	13,594	13,470	13,101
California	23,090	22,022	174,671	175,913	198,936	---	---	---	---	---
Alaska	379	446	4,730	4,673	4,870	258	521	2,717	2,547	3,115
Hawaii	1,514	1,395	15,139	14,676	15,119	431	509	4,004	4,144	4,197

¹Figures for marriages are marriage licenses issued for some counties.
²Excludes figures for State(s) shown below as not available.
³Figures include adjustments for varying length of reporting periods; see Technical notes.
⁴Figures for marriages are marriage licenses issued.
⁵Figures for divorces include estimates for some counties.

NOTES: Figures include all revisions received from the States. Cumulative figures for the current year reflect revisions received for previous months, and figures for earlier years may differ from those previously published.

Table 4. Provisional number of deaths under 1 year and infant mortality rates: each division and State, 12 months ending with October 1993 and 1994

[Data are estimates by State of residence; see Technical notes. Infant mortality rates are deaths under 1 year per 1,000 live births in specified area]

Area	12 months ending with October			
	1994		1993	
	Number	Rate	Number	Rate
New England	1,788	15.8	1,185	6.5
Maine	93	6.1	98	6.5
New Hampshire	101	6.9	77	5.0
Vermont	40	6.0	43	5.6
Massachusetts	470	5.5	529	6.3
Rhode Island	84	6.2	123	8.5
Connecticut	---	---	315	6.9
Middle Atlantic	4,582	8.3	4,742	8.4
New York	2,378	8.6	2,362	8.5
New Jersey	963	8.0	984	7.9
Pennsylvania	1,241	7.9	1,396	8.7
East North Central	5,695	8.9	6,084	9.3
Ohio	1,418	9.0	1,405	8.7
Indiana	809	9.9	807	9.5
Illinois	1,729	9.1	1,974	10.3
Michigan	1,221	8.8	1,338	9.3
Wisconsin	518	7.5	560	8.1
West North Central	1,977	7.8	2,029	7.9
Minnesota	468	7.3	455	7.1
Iowa	241	6.6	240	6.5
Missouri	612	8.0	659	8.5
North Dakota	60	7.0	58	6.6
South Dakota	126	12.0	108	9.8
Nebraska	171	7.5	196	8.7
Kansas	299	8.8	313	8.4
South Atlantic	6,016	9.1	6,397	9.5
Delaware	77	7.4	99	9.4
Maryland	638	9.0	683	9.0
District of Columbia	162	17.5	171	17.3
Virginia	755	8.0	873	9.1
West Virginia	163	7.4	202	9.3
North Carolina	994	9.7	1,066	10.6
South Carolina	484	9.6	529	9.4
Georgia	1,106	10.1	1,122	10.1
Florida	1,637	8.5	1,652	8.5
East South Central	2,062	9.0	2,374	10.2
Kentucky	394	7.5	490	9.4
Tennessee	650	8.9	715	9.5
Alabama	605	9.9	652	10.3
Mississippi	413	9.8	517	12.2
West South Central	3,790	8.0	3,869	8.1
Arkansas	305	8.9	326	9.4
Louisiana	671	9.8	680	9.9
Oklahoma	439	9.5	428	9.2
Texas ²	2,375	7.3	2,435	7.4
Mountain	1,806	7.4	1,837	7.4
Montana	100	9.1	82	7.2
Idaho	129	7.4	149	8.7
Wyoming	45	6.8	57	8.8
Colorado	370	6.8	426	7.8
New Mexico	261	9.2	237	8.5
Arizona	535	7.9	521	7.5
Utah	223	5.9	231	6.3
Nevada	143	7.0	134	5.8
Pacific	4,864	6.5	4,872	6.5
Washington	411	5.2	498	6.1
Oregon	285	7.0	298	6.9
California ²	3,962	6.7	3,874	6.5
Alaska	75	6.0	75	7.1
Hawaii	131	6.7	127	6.5

¹Excludes figures for State shown below as not available.

²Figures include adjustments for varying length of reporting periods; see Technical notes.

NOTES: Figures include all revisions received from the States. Figures for the current year reflect revisions received for previous months, and figures for earlier years may differ from those previously published.

Table 5. Provisional number of deaths and death rates, by age, race, and sex, and age-adjusted death rates by race and sex: United States, September 1993 and 1994, cumulative figures 1993 and 1994, and 12 months ending with September 1993 and 1994

[Data are provisional, estimated from a 10-percent sample of deaths. Age-specific rates on an annual basis per 100,000 population in specified group; age-adjusted rates per 100,000 U.S. standard million population; see Technical notes. Due to rounding of estimates, figures may not add to totals. For method of computation and information on standard errors of the estimates, see Technical notes]

Age, race, and sex	September				January–September				12 months ending with September			
	1994		1993		1994		1993		1994		1993	
	Number	Rate	Number	Rate	Number	Rate	Number	Rate	Number	Rate	Number	Rate
All races, both sexes¹												
All ages	178,000	827.0	174,000	819.5	1,724,000	885.7	1,698,000	882.1	2,293,000	882.0	2,240,000	870.9
Under 1 year					23,800	² 807.0	25,000	² 847.1	32,000	² 810.7	33,500	² 847.8
1–4 years	} 3,740	79.1	3,710	79.4	5,450	45.8	5,390	45.8	7,070	44.5	6,870	43.7
5–14 years					6,510	23.2	6,760	24.5	8,500	22.7	8,550	23.2
15–24 years	2,950	99.7	3,080	104.1	26,730	99.3	26,610	98.8	35,230	97.9	35,150	97.5
25–34 years	4,950	145.7	5,160	150.0	43,810	141.2	44,330	141.2	59,410	143.1	58,470	139.2
35–44 years	8,530	247.7	8,330	247.5	75,420	242.5	72,230	237.5	99,740	240.3	95,810	236.2
45–54 years	11,130	449.4	11,150	469.3	101,610	457.2	99,640	467.4	135,470	457.2	130,970	460.8
55–64 years	18,740	1,083.6	18,720	1,087.6	180,400	1,147.8	182,710	1,167.8	240,010	1,142.6	242,170	1,158.2
65–74 years	37,680	2,445.5	37,640	2,451.4	367,390	2,623.8	368,780	2,646.4	488,970	2,613.0	486,960	2,614.7
75–84 years	49,320	5,438.8	47,420	5,326.3	485,720	5,929.3	477,520	5,940.1	645,920	5,909.1	629,090	5,862.9
85 years and over	40,430	14,070.3	38,720	13,819.1	406,960	15,747.3	388,690	15,447.4	540,710	15,704.6	511,400	15,242.9
Not stated	50	...	120	...	450	...	660	...	670	...	850	...
Age-adjusted rate ³	...	486.0	...	487.7	...	513.3	...	516.6	...	511.5	...	510.5
All races, male¹												
All ages	92,130	878.8	91,320	880.5	881,980	928.1	874,060	929.9	1,174,080	924.9	1,152,130	917.7
Under 1 year					13,310	² 883.4	14,460	² 955.0	18,180	² 900.0	18,840	² 930.8
1–4 years	} 2,050	84.7	2,210	92.3	3,240	53.4	3,000	50.1	4,210	51.8	3,800	47.2
5–14 years					3,910	27.3	4,050	28.5	5,050	26.3	5,150	27.3
15–24 years	2,140	141.6	2,230	147.5	20,460	148.7	19,960	144.9	26,910	146.4	26,220	142.3
25–34 years	3,650	214.8	3,830	222.5	32,000	206.4	32,610	207.5	43,740	210.7	43,040	204.7
35–44 years	5,880	344.2	5,880	352.3	52,670	341.3	49,880	330.8	69,430	337.3	66,080	328.6
45–54 years	7,000	578.3	7,210	620.9	63,990	588.7	63,340	607.9	85,140	587.8	83,090	598.2
55–64 years	11,370	1,383.5	11,750	1,438.8	110,310	1,477.5	111,110	1,497.5	146,120	1,464.0	146,320	1,475.9
65–74 years	21,880	3,205.4	21,720	3,203.1	211,450	3,412.5	211,130	3,433.6	281,260	3,398.1	278,840	3,393.9
75–84 years	24,390	6,990.5	23,770	6,987.2	237,880	7,565.3	237,450	7,747.2	316,960	7,559.3	312,710	7,649.5
85 years and over	13,710	16,866.0	12,680	16,171.2	132,470	18,159.6	126,620	17,993.7	176,690	18,196.7	167,480	17,855.0
Not stated	50	...	60	...	290	...	440	...	400	...	570	...
Age-adjusted rate ³	...	630.3	...	642.5	...	664.1	...	670.8	...	661.9	...	661.9
All races, female¹												
All ages	85,390	777.4	82,740	761.2	842,260	845.8	824,300	836.5	1,119,640	841.6	1,087,680	826.3
Under 1 year					10,470	² 725.7	10,570	² 731.2	13,840	² 716.0	14,690	² 760.7
1–4 years	} 1,690	73.2	1,500	65.7	2,210	38.1	2,390	42.0	2,860	36.9	3,070	40.0
5–14 years					2,600	19.1	2,710	20.0	3,460	18.9	3,400	18.9
15–24 years	810	56.0	850	58.8	6,270	47.7	6,650	50.4	8,330	47.3	8,930	50.7
25–34 years	1,310	77.1	1,330	77.4	11,810	76.1	11,720	74.8	15,670	75.5	15,430	73.5
35–44 years	2,640	152.2	2,450	144.4	22,750	145.1	22,350	145.9	30,300	144.9	29,730	145.3
45–54 years	4,120	325.4	3,940	324.4	37,620	331.2	36,300	333.2	50,330	332.2	47,870	329.5
55–64 years	7,380	813.1	6,970	770.5	70,090	849.8	71,590	870.4	93,890	851.5	95,850	871.8
65–74 years	15,800	1,841.1	15,920	1,856.9	155,950	1,997.8	157,650	2,024.5	207,710	1,990.5	208,130	1,999.7
75–84 years	24,930	4,468.4	23,660	4,301.0	247,840	4,910.4	240,070	4,826.6	328,950	4,882.0	316,380	4,763.3
85 years and over	26,720	12,962.2	26,040	12,905.1	274,490	14,792.5	262,070	14,461.0	364,020	14,725.7	343,920	14,223.3
Not stated	–	...	60	...	160	...	220	...	270	...	280	...
Age-adjusted rate ³	...	366.8	...	358.7	...	388.0	...	389.7	...	386.8	...	386.3
White												
All ages	152,680	856.6	148,800	841.8	1,482,940	916.9	1,459,360	910.0	1,973,590	913.3	1,925,200	898.5
Under 1 year					15,360	² 663.7	16,340	² 703.1	20,660	² 665.8	21,720	² 699.5
1–4 years	} 2,430	64.8	2,430	65.5	3,580	37.9	3,800	40.8	4,690	37.3	4,870	39.1
5–14 years					4,600	20.7	5,000	22.7	6,090	20.4	6,280	21.4
15–24 years	2,100	88.9	2,150	90.7	19,030	88.5	18,490	85.6	24,900	86.6	24,580	85.0
25–34 years	3,650	131.3	3,840	136.1	30,840	121.4	31,940	123.8	42,120	123.9	41,820	121.1
35–44 years	6,060	211.3	5,740	204.1	53,440	206.0	51,080	200.9	70,990	205.1	68,340	201.4
45–54 years	8,550	403.2	8,700	426.5	78,280	411.0	76,550	417.9	104,410	411.1	100,670	412.2
55–64 years	15,490	1,034.9	15,270	1,022.4	147,720	1,085.0	149,100	1,097.1	196,590	1,080.0	197,820	1,089.0
65–74 years	32,790	2,396.8	32,660	2,390.7	318,000	2,556.0	319,420	2,573.9	422,540	2,540.7	422,230	2,545.5
75–84 years	44,410	5,407.0	42,260	5,238.0	437,100	5,889.2	429,280	5,890.7	582,270	5,878.0	565,710	5,815.9
85 years and over	37,180	14,171.6	35,640	13,942.8	374,710	15,879.4	357,920	15,588.0	497,900	15,831.5	470,570	15,373.1
Not stated	20	...	100	...	280	...	450	...	420	...	590	...
Age-adjusted rate ³	...	461.5	...	459.5	...	485.8	...	487.9	...	484.2	...	482.5

See footnotes at end of table.

Table 5. Provisional number of deaths and death rates, by age, race, and sex, and age-adjusted death rates by race and sex: United States, September 1993 and 1994, cumulative figures 1993 and 1994, and 12 months ending with September 1993 and 1994—Con.

[Data are provisional, estimated from a 10-percent sample of deaths. Age-specific rates on an annual basis per 100,000 population in specified group; age-adjusted rates per 100,000 U.S. standard million population; see Technical notes. Due to rounding of estimates, figures may not add to totals. For method of computation and information on standard errors of the estimates, see Technical notes]

Age, race, and sex	September				January–September				12 months ending with September			
	1994		1993		1994		1993		1994		1993	
	Number	Rate	Number	Rate	Number	Rate	Number	Rate	Number	Rate	Number	Rate
White male												
All ages	78,750	900.7	77,040	888.8	749,430	944.9	743,400	945.5	998,370	942.1	980,860	933.8
Under 1 year					8,510	² 718.6	9,320	² 782.6	11,650	² 733.2	12,200	² 765.9
1–4 years	1,360	70.7	1,480	77.7	2,140	44.7	2,160	45.0	2,810	43.7	2,760	43.2
5–14 years					2,730	23.7	3,040	26.9	3,630	23.7	3,810	25.3
15–24 years	1,500	123.8	1,530	125.8	14,370	130.1	13,690	123.4	18,670	126.5	18,100	121.9
25–34 years	2,760	196.6	2,840	199.1	22,920	178.6	23,890	183.3	31,390	182.8	31,300	179.4
35–44 years	4,220	293.4	4,140	293.8	37,710	289.9	36,080	283.2	50,050	288.5	48,300	284.1
45–54 years	5,480	523.3	5,710	567.1	49,820	529.8	49,110	543.2	66,370	529.2	64,530	535.3
55–64 years	9,490	1,319.7	9,680	1,351.2	91,260	1,395.4	91,640	1,406.8	120,780	1,381.4	120,870	1,388.4
65–74 years	19,420	3,182.2	19,000	3,129.4	183,950	3,319.1	185,020	3,357.8	244,730	3,304.9	244,230	3,317.0
75–84 years	21,990	6,940.2	21,120	6,839.5	214,960	7,526.0	214,050	7,691.4	286,790	7,527.3	282,180	7,601.8
85 years and over	12,530	17,033.3	11,500	16,231.6	120,860	18,328.5	115,120	18,105.9	161,230	18,342.4	152,210	17,970.5
Not stated	20	...	40	...	190	...	270	...	270	...	360	...
Age-adjusted rate ³	...	600.8	...	604.1	...	627.1	...	633.8	...	625.3	...	626.1
White female												
All ages	73,930	814.1	71,760	796.6	733,510	890.0	715,960	875.8	975,220	885.6	944,340	864.6
Under 1 year					6,850	² 607.0	7,020	² 621.0	9,020	² 595.8	9,520	² 629.6
1–4 years	1,080	59.2	940	52.0	1,440	31.2	1,640	35.9	1,880	30.7	2,110	34.8
5–14 years					1,870	17.2	1,960	18.3	2,460	17.0	2,470	17.3
15–24 years	600	52.2	620	53.8	4,670	44.6	4,800	45.5	6,240	44.5	6,480	46.1
25–34 years	890	64.7	1,000	71.7	7,920	63.2	8,050	63.1	10,730	63.8	10,520	61.6
35–44 years	1,840	128.7	1,600	114.1	15,730	121.6	15,000	118.2	20,940	121.4	20,040	118.4
45–54 years	3,070	286.0	2,990	289.5	28,460	295.1	27,440	295.9	38,040	295.8	36,140	292.2
55–64 years	6,000	771.5	5,590	719.2	56,460	798.0	57,460	812.2	75,810	801.5	76,950	813.4
65–74 years	13,380	1,765.6	13,660	1,799.8	134,050	1,943.0	134,400	1,947.6	177,810	1,927.3	178,000	1,929.7
75–84 years	22,420	4,444.1	21,150	4,247.0	222,140	4,864.9	215,230	4,778.8	295,480	4,847.1	283,530	4,713.7
85 years and over	24,660	13,061.8	24,150	13,070.5	253,850	14,931.1	242,800	14,623.8	336,670	14,857.5	318,360	14,379.4
Not stated	—	...	60	...	90	...	180	...	150	...	230	...
Age-adjusted rate ³	...	345.9	...	338.2	...	368.0	...	367.5	...	366.9	...	364.3
Black												
All ages	21,710	806.0	21,970	828.6	213,550	876.0	212,340	885.0	283,270	870.2	279,580	872.7
Under 1 year					7,480	² 1,573.2	8,030	² 1,671.2	10,150	² 1,603.5	10,800	² 1,682.2
1–4 years	1,180	160.2	1,100	151.2	1,560	82.0	1,390	73.9	1,960	77.9	1,690	67.7
5–14 years					1,590	36.5	1,460	34.5	2,020	35.1	1,930	34.2
15–24 years	760	170.9	830	188.8	6,750	167.4	7,120	178.0	9,070	168.5	9,220	172.8
25–34 years	1,140	254.7	1,230	273.2	11,440	280.3	11,090	270.3	15,250	279.4	14,930	272.2
35–44 years	2,220	533.2	2,330	578.5	20,330	542.1	19,310	531.8	26,480	529.3	25,000	516.6
45–54 years	2,290	896.7	2,270	934.3	20,740	907.2	20,870	959.1	27,570	904.5	27,330	942.7
55–64 years	2,810	1,631.9	3,020	1,776.7	28,640	1,836.3	29,820	1,934.0	38,060	1,827.2	39,410	1,915.0
65–74 years	4,270	3,234.8	4,250	3,250.0	43,860	3,661.1	43,670	3,690.3	59,030	3,689.4	57,360	3,630.4
75–84 years	4,270	6,259.2	4,310	6,410.5	42,830	6,956.9	42,440	6,992.8	55,810	6,781.3	55,920	6,903.7
85 years and over	2,770	13,534.8	2,620	12,958.0	28,190	15,335.3	26,930	14,743.2	37,650	15,367.3	35,730	14,643.4
Not stated	20	...	20	...	150	...	210	...	230	...	260	...
Age-adjusted rate ³	...	721.7	...	748.9	...	781.5	...	795.3	...	777.0	...	784.1
Black male												
All ages	11,540	902.8	12,620	1,003.8	116,500	1,007.3	115,910	1,019.0	154,100	997.8	151,860	1,000.0
Under 1 year					4,350	² 1,805.4	4,710	² 1,935.7	5,950	² 1,853.6	6,070	² 1,867.7
1–4 years	620	165.9	630	170.9	850	90.4	750	79.4	1,100	86.3	900	71.3
5–14 years					970	44.2	840	38.2	1,150	39.4	1,140	39.9
15–24 years	550	247.5	640	291.4	5,330	265.1	5,560	278.7	7,270	270.3	7,180	269.4
25–34 years	770	363.5	930	436.7	8,010	415.2	7,790	402.1	10,870	420.7	10,500	404.9
35–44 years	1,480	761.4	1,600	853.0	13,810	788.9	12,720	752.8	17,830	764.3	16,360	726.1
45–54 years	1,360	1,174.4	1,420	1,289.3	12,590	1,213.7	13,000	1,316.4	16,620	1,202.6	16,880	1,284.6
55–64 years	1,640	2,185.5	1,850	2,500.9	16,820	2,474.8	17,450	2,599.7	22,280	2,453.7	22,670	2,530.1
65–74 years	2,070	3,781.5	2,320	4,283.3	24,270	4,886.1	23,270	4,749.2	32,220	4,852.4	30,890	4,723.2
75–84 years	2,070	8,423.1	2,220	9,155.9	19,760	8,924.4	20,000	9,169.9	25,810	8,719.6	26,270	9,027.5
85 years and over	960	16,000.0	980	16,560.2	9,630	18,028.4	9,650	17,944.6	12,890	18,154.9	12,790	17,763.9
Not stated	20	...	20	...	90	...	170	...	120	...	210	...
Age-adjusted rate ³	...	933.8	...	1,043.7	...	1,049.1	...	1,064.1	...	1,039.3	...	1,044.4

See footnotes at end of table.

Table 5. Provisional number of deaths and death rates, by age, race, and sex, and age-adjusted death rates by race and sex: United States, September 1993 and 1994, cumulative figures 1993 and 1994, and 12 months ending with September 1993 and 1994—Con.

[Data are provisional, estimated from a 10-percent sample of deaths. Age-specific rates on an annual basis per 100,000 population in specified group; age-adjusted rates per 100,000 U.S. standard million population; see Technical notes. Due to rounding of estimates, figures may not add to totals. For method of computation and information on standard errors of the estimates, see Technical notes]

Age, race, and sex	September				January–September				12 months ending with September			
	1994		1993		1994		1993		1994		1993	
	Number	Rate	Number	Rate	Number	Rate	Number	Rate	Number	Rate	Number	Rate
Black female												
All ages	10,170	718.6	9,360	671.3	97,050	757.5	96,430	764.3	129,170	754.9	127,730	758.1
Under 1 year					3,120	² 1,330.3	3,320	² 1,400.2	4,190	² 1,342.9	4,730	² 1,492.1
1–4 years	} 560	154.2	470	130.9	700	76.7	640	69.4	860	69.3	790	64.1
5–14 years					620	29.1	630	30.2	870	30.6	800	28.7
15–24 years	210	94.4	200	90.9	1,420	70.4	1,560	78.0	1,800	66.8	2,030	76.0
25–34 years	370	156.9	290	122.3	3,420	159.1	3,290	152.1	4,380	152.3	4,430	153.2
35–44 years	740	333.3	740	343.9	6,510	326.3	6,590	339.8	8,650	324.0	8,640	334.1
45–54 years	930	666.4	840	632.4	8,160	652.2	7,860	661.1	10,950	657.3	10,450	659.3
55–64 years	1,170	1,204.3	1,170	1,218.7	11,820	1,343.0	12,370	1,421.7	15,790	1,343.8	16,740	1,440.6
65–74 years	2,200	2,847.5	1,920	2,506.4	19,590	2,794.7	20,400	2,940.2	26,800	2,863.2	26,470	2,858.5
75–84 years	2,200	5,040.8	2,090	4,862.0	23,070	5,853.4	22,440	5,770.8	30,000	5,692.6	29,650	5,712.9
85 years and over	1,800	12,443.2	1,640	11,467.4	18,560	14,241.3	17,280	13,400.5	24,760	14,229.9	22,940	13,337.2
Not stated	—	...	—	...	60	...	40	...	110	...	50	...
Age-adjusted rate ³	557.6	...	522.6	...	575.1	...	588.7	...	574.1	...	584.7

¹Includes races other than white and black.

²Death rates under 1 year (based on population estimates) differ from infant mortality rates (based on live births); see table 9 for infant mortality rates.

³For method of computation, see Technical notes.

NOTES: Figures include all revisions received from the States. Cumulative and 12-month figures for the current year reflect revisions received for previous months, and figures for earlier years may differ from those previously published. Data include adjustments for New York City, which is not included in the sample for September 1994.

Table 6. Provisional number of deaths and death rates for 72 selected causes and Human immunodeficiency virus infection: United States, September 1993 and 1994, cumulative figures 1993 and 1994, and 12 months ending with September 1993 and 1994

[Data are provisional, estimated from a 10-percent sample of deaths. Rates on an annual basis per 100,000 estimated population. Due to rounding of estimates, figures may not add to totals. For method of computation and information on standard errors of the estimates, see Technical notes. For explanation of asterisk preceding cause-of-death codes, see Technical notes]

Cause of death (Ninth Revision, International Classification of Diseases, 1975)	September		September		January–September		January–September		12 months ending with September		12 months ending with September	
	1994		1993		1994		1993		1994		1993	
	Number	Rate	Number	Rate	Number	Rate	Number	Rate	Number	Rate	Number	Rate
All causes	178,000	827.0	174,000	819.5	1,724,000	885.7	1,698,000	882.1	2,293,000	882.0	2,240,000	870.9
Shigellosis and amebiasis004,006	—	*	—	*	10	*	—	*	10	*	—	*
Certain other intestinal infections.007–009	80	*	50	*	640	0.3	430	0.2	780	0.3	610	0.2
Tuberculosis010–018	110	0.5	110	0.5	1,120	0.6	1,260	0.6	1,400	0.5	1,610	0.6
Tuberculosis of respiratory system010–012	70	*	70	*	850	0.4	1,000	0.5	1,080	0.4	1,270	0.5
Other tuberculosis013–018	40	*	40	*	270	0.1	260	0.1	310	0.1	330	0.1
Whooping cough.033	—	*	—	*	20	*	10	*	20	*	10	*
Streptococcal sore throat, scarlatina, and erysipelas.034–035	—	*	—	*	—	*	—	*	—	*	—	*
Meningococcal infection036	30	*	20	*	230	0.1	220	0.1	290	0.1	300	0.1
Septicemia038	1,650	7.7	1,510	7.1	15,250	7.8	15,140	7.9	20,500	7.9	20,000	7.8
Acute poliomyelitis.045	—	*	—	*	—	*	—	*	—	*	—	*
Measles055	—	*	—	*	10	*	—	*	10	*	—	*
Viral hepatitis.070	250	1.2	250	1.2	2,010	1.0	1,910	1.0	2,610	1.0	2,580	1.0
Syphilis090–097	20	*	—	*	90	*	50	*	140	0.1	50	*
All other infectious and parasitic diseases ¹001–003,005,020–032,037,039–041,*042–*044,046–054,056–066,071–088,098–139	4,010	18.7	4,200	19.8	34,520	17.7	32,490	16.9	46,180	17.8	42,620	16.6
Malignant neoplasms, including neoplasms of lymphatic and hematopoietic tissues140–208	44,580	207.7	43,090	202.9	403,720	207.4	396,400	205.9	538,590	207.2	527,140	205.0
Malignant neoplasms of lip, oral cavity, and pharynx140–149	670	3.1	600	2.8	5,810	3.0	5,810	3.0	8,190	3.2	7,950	3.1
Malignant neoplasms of digestive organs and peritoneum150–159	10,740	50.0	10,330	48.6	95,160	48.9	91,840	47.7	126,770	48.8	121,900	47.4
Malignant neoplasms of respiratory and intrathoracic organs160–165	12,580	58.6	12,550	59.1	115,690	59.4	115,080	59.8	154,540	59.4	153,350	59.6
Malignant neoplasm of breast174–175	3,490	16.3	3,600	16.9	32,870	16.9	33,690	17.5	43,890	16.9	44,600	17.3
Malignant neoplasms of genital organs179–187	5,340	24.9	4,950	23.3	46,560	23.9	45,610	23.7	61,690	23.7	60,350	23.5
Malignant neoplasms of urinary organs188–189	1,760	8.2	1,680	7.9	16,560	8.5	16,230	8.4	22,460	8.6	21,580	8.4
Malignant neoplasms of all other and unspecified sites170–173,190–199	5,670	26.4	5,160	24.3	50,550	26.0	49,220	25.6	67,710	26.0	65,540	25.5
Leukemia.204–208	1,800	8.4	1,500	7.1	15,190	7.8	14,280	7.4	19,850	7.6	19,080	7.4
Other malignant neoplasms of lymphatic and hematopoietic tissues.200–203	2,530	11.8	2,720	12.8	25,300	13.0	24,650	12.8	33,490	12.9	32,780	12.7
Benign neoplasms, carcinoma in situ, and neoplasms of uncertain behavior and of unspecified nature210–239	530	2.5	660	3.1	5,890	3.0	5,950	3.1	7,990	3.1	7,730	3.0
Diabetes mellitus250	4,290	20.0	4,040	19.0	41,270	21.2	41,110	21.3	55,180	21.2	52,820	20.5
Nutritional deficiencies260–269	260	1.2	260	1.2	2,410	1.2	2,490	1.3	3,250	1.3	3,390	1.3
Anemias280–285	350	1.6	340	1.6	3,100	1.6	3,350	1.7	4,280	1.6	4,370	1.7
Meningitis320–322	10	*	60	*	640	0.3	630	0.3	830	0.3	790	0.3
Major cardiovascular diseases390–448	71,070	331.1	69,990	329.5	710,790	365.3	705,910	366.7	945,370	363.6	934,640	363.4
Diseases of heart390–398,402,404–429	55,120	256.8	54,550	256.8	553,460	284.4	553,080	287.3	737,360	283.6	732,880	285.0
Rheumatic fever and rheumatic heart disease.390–398	390	1.8	320	1.5	4,260	2.2	4,100	2.1	5,730	2.2	5,630	2.2
Hypertensive heart disease402	2,030	9.5	1,690	7.9	18,320	9.4	18,040	9.4	23,550	9.1	24,010	9.3
Hypertensive heart and renal disease404	180	0.8	190	0.9	1,540	0.8	1,620	0.8	2,190	0.8	2,250	0.9
Ischemic heart disease410–414	36,320	169.2	35,300	166.2	365,580	187.9	363,400	188.8	487,700	187.6	482,670	187.7
Acute myocardial infarction410	16,690	77.7	16,710	78.7	170,500	87.6	169,170	87.9	228,010	87.7	226,500	88.1
Other acute and subacute forms of ischemic heart disease411	240	1.1	210	1.0	2,000	1.0	2,230	1.2	2,730	1.1	2,890	1.1
Angina pectoris413	60	*	40	*	670	0.3	480	0.2	920	0.4	750	0.3
Old myocardial infarction and other forms of chronic ischemic heart disease412,414	19,330	90.0	18,340	86.3	192,410	98.9	191,510	99.5	256,030	98.5	252,520	98.2
Other diseases of endocardium424	1,060	4.9	1,070	5.0	10,840	5.6	10,460	5.4	14,870	5.7	14,320	5.6
All other forms of heart disease.415–423,425–429	15,140	70.5	15,980	75.2	152,920	78.6	155,460	80.7	203,320	78.2	204,020	79.3
Hypertension with or without renal disease401,403	860	4.0	800	3.8	8,140	4.2	7,830	4.1	10,860	4.2	10,130	3.9
Cerebrovascular diseases430–438	11,870	55.3	11,450	53.9	115,940	59.6	112,230	58.3	153,200	58.9	148,620	57.8
Intracerebral and other intracranial hemorrhage.431–432	1,750	8.2	1,640	7.7	15,550	8.0	16,170	8.4	20,650	7.9	21,640	8.4
Cerebral thrombosis and unspecified occlusion of cerebral arteries.434,0,434.9	1,350	6.3	1,290	6.1	11,430	5.9	11,910	6.2	15,330	5.9	16,000	6.2

See footnotes at end of table.

Table 6. Provisional number of deaths and death rates for 72 selected causes and Human immunodeficiency virus infection: United States, September 1993 and 1994, cumulative figures 1993 and 1994, and 12 months ending with September 1993 and 1994—Con.

[Data are provisional, estimated from a 10-percent sample of deaths. Rates on an annual basis per 100,000 estimated population. Due to rounding of estimates, figures may not add to totals. For method of computation and information on standard errors of the estimates, see Technical notes. For explanation of asterisk preceding cause-of-death codes, see Technical notes.]

Cause of death (Ninth Revision, International Classification of Diseases, 1975)	September		January–September				12 months ending with September						
	1994		1993		1994		1993		1994		1993		
	Number	Rate	Number	Rate	Number	Rate	Number	Rate	Number	Rate	Number	Rate	
Cerebral embolism	434.1	60	*	50	*	730	0.4	370	0.2	850	0.3	520	0.2
All other and late effects of cerebrovascular diseases	430,433,435–438	8,710	40.6	8,460	39.8	88,240	45.3	83,790	43.5	116,370	44.8	110,460	43.0
Atherosclerosis440	1,310	6.1	1,280	6.0	13,290	6.8	12,940	6.7	17,410	6.7	17,070	6.6
Other diseases of arteries, arterioles, and capillaries441–448	1,920	8.9	1,900	8.9	19,960	10.3	19,840	10.3	26,540	10.2	25,940	10.1
Acute bronchitis and bronchiolitis466	20	*	40	*	450	0.2	460	0.2	550	0.2	600	0.2
Pneumonia and influenza480–487	5,070	23.6	4,800	22.6	63,700	32.7	60,360	31.4	83,050	31.9	77,750	30.2
Pneumonia480–486	5,060	23.6	4,790	22.5	62,460	32.1	59,660	31.0	81,590	31.4	77,020	29.9
Influenza487	10	*	10	*	1,240	0.6	700	0.4	1,460	0.6	730	0.3
Chronic obstructive pulmonary diseases and allied conditions490–496	7,250	33.8	6,770	31.9	77,810	40.0	76,470	39.7	101,960	39.2	98,130	38.2
Bronchitis, chronic and unspecified490–491	300	1.4	210	1.0	2,760	1.4	2,740	1.4	3,610	1.4	3,620	1.4
Emphysema492	1,370	6.4	1,240	5.8	13,170	6.8	13,900	7.2	17,250	6.6	17,980	7.0
Asthma493	290	1.4	310	1.4	4,000	2.0	3,830	2.0	5,030	1.9	4,820	1.9
Other chronic obstructive pulmonary diseases and allied conditions494–496	5,290	24.6	5,010	23.6	57,880	29.7	55,990	29.1	76,070	29.3	71,710	27.9
Ulcer of stomach and duodenum531–533	540	2.5	380	1.8	4,740	2.4	4,390	2.3	5,900	2.3	5,690	2.2
Appendicitis540–543	–	*	40	*	220	0.1	350	0.2	320	0.1	380	0.1
Hernia of abdominal cavity and intestinal obstruction without mention of hernia550–553,560	500	2.3	580	2.7	4,500	2.3	4,300	2.2	5,970	2.3	5,890	2.3
Chronic liver disease and cirrhosis571	1,970	9.2	2,160	10.2	18,970	9.7	18,180	9.4	25,460	9.8	24,390	9.5
Cholelithiasis and other disorders of gallbladder574–575	150	0.7	150	0.7	2,040	1.0	1,950	1.0	2,750	1.1	2,600	1.0
Nephritis and nephrotic syndrome, and nephrosis580–589	1,830	8.5	1,870	8.8	18,110	9.3	18,970	9.8	23,790	9.2	24,820	9.7
Acute glomerulonephritis and nephrotic syndrome580–581	10	*	20	*	210	0.1	230	0.1	310	0.1	270	0.1
Chronic glomerulonephritis, nephritis and nephropathy, not specified as acute or chronic, and renal sclerosis, unspecified582–583,587	120	0.5	170	0.8	1,140	0.6	1,220	0.6	1,490	0.6	1,620	0.6
Renal failure, disorders resulting from impaired renal function, and small kidney of unknown cause584–586,588–589	1,690	7.9	1,690	7.9	16,750	8.6	17,530	9.1	21,990	8.5	22,930	8.9
Infections of kidney590	80	*	40	*	790	0.4	750	0.4	1,030	0.4	980	0.4
Hyperplasia of prostate600	30	*	40	*	250	0.1	350	0.2	350	0.1	410	0.2
Complications of pregnancy, childbirth, and the puerperium630–676	20	*	20	*	270	0.1	210	0.1	360	0.1	310	0.1
Pregnancy with abortive outcome630–638	–	*	–	*	60	*	40	*	80	*	50	*
Other complications of pregnancy, childbirth, and the puerperium640–676	20	*	20	*	210	0.1	170	0.1	280	0.1	260	0.1
Congenital anomalies740–759	1,100	5.1	1,140	5.4	8,520	4.4	8,770	4.5	11,360	4.4	11,710	4.6
Certain conditions originating in the perinatal period760–779	1,140	5.3	1,130	5.3	10,720	5.5	11,480	6.0	14,870	5.7	15,390	6.0
Birth trauma, intrauterine hypoxia, birth asphyxia, and respiratory distress syndrome767–769	150	0.7	170	0.8	1,860	0.9	2,040	1.1	2,740	1.1	2,840	1.1
Other conditions originating in the perinatal period760–766,770–779	1,000	4.6	960	4.5	8,860	4.5	9,440	4.9	12,130	4.7	12,550	4.9
Symptoms, signs, and ill-defined conditions780–799	2,850	13.3	2,520	11.9	30,160	15.5	29,300	15.2	40,160	15.4	38,310	14.9
All other diseasesResidual	15,530	72.3	14,770	69.5	152,450	78.3	147,140	76.4	202,770	78.0	192,230	74.7
Accidents and adverse effectsE800–E949	7,780	36.2	7,640	36.0	66,430	34.1	64,290	33.4	89,150	34.3	85,040	33.1
Motor vehicle accidentsE810–E825	4,050	18.9	3,700	17.4	31,140	16.0	29,560	15.3	42,360	16.3	40,050	15.6
All other accidents and adverse effectsE800–E807,E826–E949	3,720	17.3	3,940	18.5	35,290	18.1	34,730	18.0	46,790	18.0	44,980	17.5
SuicideE950–E959	2,300	10.7	2,820	13.3	22,800	11.7	22,610	11.7	30,190	11.6	29,310	11.4
Homicide and legal interventionE960–E978	1,800	8.4	2,280	10.7	17,800	9.1	18,600	9.6	23,990	9.2	24,640	9.6
All other external causesE980–E999	310	1.4	300	1.4	1,760	0.9	2,050	1.1	2,300	0.9	2,560	1.0
Human immunodeficiency virus infection ²	*042–*044	3,450	16.1	3,600	16.9	29,510	15.2	27,040	14.0	39,440	15.2	35,530	13.8

¹Includes data for deaths due to Human immunodeficiency virus infection (category numbers *042–*044) shown separately below; see Technical notes.

²Included in All other infectious and parasitic diseases shown above.

NOTES: Figures include all revisions received from the States. Cumulative and 12-month figures for the current year reflect revisions received for previous months, and figures for earlier years may differ from those previously published. Data include adjustments for New York City, which is not included in the sample for September 1994.

Table 7. Provisional number of deaths and death rates for 16 selected subcategories of Malignant neoplasms, including neoplasms of lymphatic and hematopoietic tissues: United States, September 1993 and 1994, cumulative figures 1993 and 1994, and 12 months ending with September 1993 and 1994

[Data are provisional, estimated from a 10-percent sample of deaths. Rates on an annual basis per 100,000 estimated population. Due to rounding of estimates, figures may not add to totals. For method of computation and information on standard errors of the estimates, see Technical notes]

Cause of death (Ninth Revision, International Classification of Diseases, 1975)	September		January–September				12 months ending with September					
	1994		1993		1994		1993		1994		1993	
	Number	Rate	Number	Rate	Number	Rate	Number	Rate	Number	Rate	Number	Rate
Malignant neoplasms, including neoplasms of lymphatic and hematopoietic tissues ¹140–208	44,580	207.7	43,090	202.9	403,720	207.4	396,400	205.9	538,590	207.2	527,140	205.0
Malignant neoplasm of esophagus150	880	4.1	850	4.0	8,650	4.4	7,520	3.9	11,360	4.4	10,020	3.9
Malignant neoplasm of stomach151	1,310	6.1	1,190	5.6	10,180	5.2	10,530	5.5	13,490	5.2	13,570	5.3
Malignant neoplasms of colon, rectum, rectosigmoid junction, and anus153,154	4,910	22.9	4,600	21.6	43,910	22.6	41,800	21.7	58,690	22.6	56,010	21.8
Malignant neoplasm of pancreas157	2,290	10.7	2,270	10.7	20,020	10.3	19,910	10.3	26,690	10.3	26,500	10.3
Malignant neoplasms of trachea, bronchus, and lung162	12,180	56.7	12,040	56.7	111,860	57.5	111,270	57.8	149,470	57.5	148,310	57.7
Malignant melanoma of skin172	580	2.7	480	2.3	5,510	2.8	4,850	2.5	7,440	2.9	6,420	2.5
Malignant neoplasm of cervix uteri180	380	1.8	400	1.9	3,520	1.8	3,540	1.8	4,790	1.8	4,600	1.8
Malignant neoplasms of body of uterus and of uterus, part unspecified179,182	480	2.2	620	2.9	4,470	2.3	4,430	2.3	6,040	2.3	5,850	2.3
Malignant neoplasm of ovary183.0	1,240	5.8	1,130	5.3	10,140	5.2	9,720	5.0	13,180	5.1	13,090	5.1
Malignant neoplasm of prostate185	3,060	14.2	2,670	12.6	26,870	13.8	26,680	13.9	35,530	13.7	35,220	13.7
Malignant neoplasm of bladder188	840	3.9	820	3.9	8,130	4.2	8,150	4.2	11,010	4.2	10,740	4.2
Malignant neoplasms of kidney and other and unspecified urinary organs189	920	4.3	850	4.0	8,430	4.3	8,080	4.2	11,450	4.4	10,850	4.2
Malignant neoplasms of brain and other and unspecified parts of nervous system191,192	1,160	5.4	870	4.1	8,930	4.6	8,370	4.3	11,720	4.5	11,260	4.4
Hodgkin's disease201	80	*	160	0.7	1,120	0.6	1,270	0.7	1,460	0.6	1,680	0.7
Malignant lymphoma other than Hodgkin's disease200,202	1,600	7.4	1,790	8.4	16,630	8.5	15,960	8.3	22,020	8.5	21,230	8.3
Multiple myeloma and other immunoproliferative neoplasms203	850	4.0	770	3.6	7,550	3.9	7,420	3.9	10,020	3.9	9,870	3.8

¹Includes figures for subcategories not shown below.

NOTES: Figures include all revisions received from the States. Cumulative and 12-month figures for the current year reflect revisions received for previous months, and figures for earlier years may differ from those previously published. Data include adjustments for New York City, which is not included in the sample for September 1994.

Table 8. Provisional number of deaths and death rates for injury by firearms: United States, September 1993 and 1994, cumulative figures 1993 and 1994, and 12 months ending with September 1993 and 1994

[Data are provisional, estimated from a 10-percent sample of deaths. Rates on an annual basis per 100,000 estimated population. Due to rounding of estimates, figures may not add to totals. For method of computation and information on standard errors of the estimates, see Technical notes]

Cause of death (Ninth Revision, International Classification of Diseases, 1975)	September		January–September				12 months ending with September					
	1994		1993		1994		1993		1994		1993	
	Number	Rate	Number	Rate	Number	Rate	Number	Rate	Number	Rate	Number	Rate
Injury by firearmsE922,E955.0–E955.4,E965.0–965.4,E970,E985.0–E985.4	3,040	14.1	3,620	17.0	28,610	14.7	28,990	15.1	38,410	14.8	37,720	14.7
Accident caused by firearm missileE922	130	0.6	70	*	1,060	0.5	1,190	0.6	1,550	0.6	1,610	0.6
Suicide by firearmsE955.0–E955.4	1,410	6.6	1,840	8.7	14,540	7.5	14,130	7.3	19,210	7.4	18,250	7.1
Homicide and legal intervention by firearmsE965.0–E965.4,E970	1,410	6.6	1,650	7.8	12,810	6.6	13,370	6.9	17,380	6.7	17,500	6.8
Injury by firearms, undetermined whether accidentally or purposely inflictedE985.0–E985.4	80	*	60	*	200	0.1	300	0.2	270	0.1	360	0.1

NOTES: Figures include all revisions received from the States. Cumulative and 12-month figures for the current year reflect revisions received for previous months, and figures for earlier years may differ from those previously published. Data include adjustments for New York City, which is not included in the sample for September 1994.

Table 9. Provisional number of deaths under 1 year and infant mortality rates, by age and for 10 selected causes: United States, September 1993 and 1994, cumulative figures 1993 and 1994, and 12 months ending with September 1993 and 1994

[Data are provisional, estimated from a 10-percent sample of deaths. Rates on an annual basis per 100,000 live births. Due to rounding of estimates, figures may not add to totals. For method of computation and information on standard errors of the estimates, see Technical notes]

Age and cause of death (Ninth Revision, International Classification of Diseases, 1975)	September		January–September				12 months ending with September					
	1994		1993		1994		1993		1994		1993	
	Number	Rate	Number	Rate	Number	Rate	Number	Rate	Number	Rate	Number	Rate
Total, under 1 year	2,500	776.0	2,600	752.6	23,800	797.0	25,000	829.0	32,000	805.3	33,500	831.4
Under 28 days	1,740	531.4	1,810	530.7	14,850	497.3	15,840	524.6	20,400	512.8	21,100	523.1
28 days to 11 months	800	244.3	750	219.9	8,930	299.0	9,190	304.3	11,620	292.1	12,440	308.4
Certain gastrointestinal diseases008–009,535,555–558	10	*	30	8.8	210	7.0	150	5.0	260	6.5	190	4.7
Pneumonia and influenza480–487	10	*	10	*	350	11.7	410	13.6	400	10.1	550	13.6
Congenital anomalies740–759	650	198.5	710	208.2	5,050	169.1	5,080	168.2	6,700	168.4	6,860	170.1
Disorders relating to short gestation and unspecified low birthweight765	300	91.6	260	76.2	2,980	99.8	3,150	104.3	3,920	98.5	4,100	101.7
Birth trauma767	10	*	10	*	180	6.0	130	4.3	190	4.8	150	3.7
Intrauterine hypoxia and birth asphyxia768	60	*	40	*	420	14.1	450	14.9	620	15.6	670	16.6
Respiratory distress syndrome769	80	*	120	35.2	1,230	41.2	1,440	47.7	1,880	47.3	1,990	49.3
Other conditions originating in the perinatal period760–764,766,770–779	700	213.8	700	205.2	5,720	191.5	6,170	204.3	7,970	200.4	8,310	206.0
Sudden infant death syndrome798.0	300	91.6	280	82.1	2,710	90.7	3,290	109.0	3,710	93.3	4,530	112.3
All other causesResidual	420	128.3	400	117.3	4,930	165.1	4,760	157.6	6,360	159.9	6,180	153.2

NOTES: Figures include all revisions received from the States. Cumulative and 12-month figures for the current year reflect revisions received for previous months, and figures for earlier years may differ from those previously published. Data include adjustments for New York City, which is not included in the sample for September 1994.

Technical notes

Nature and sources of data

Data in this report are provisional unless otherwise specified and include only events occurring within the United States. Mortality data exclude fetal deaths.

Birth, death, and infant death figures in tables 2 and 4 for each State are estimates by State of residence. These estimates are derived by applying adjustment ratios to the actual counts of certificates for all events occurring in the State and received in registration offices during a 1-month period regardless of date of the event. The adjustment ratios for each data year represent the observed relationship between final State occurrence and residence figures for the three most recent years for which final data were available and are expressed as a single ratio for each State. As in previous years, monthly State marriage and divorce figures represent the actual count of all events occurring in the State (State of occurrence) that were received in the registration offices during the 1-month period. Delay in the receipt of certificates in a registration office may result in a low State figure for a given month followed by a high figure for the month(s) in which the delayed records are received. Data for previous months and cumulative data include revised figures received from the States.

Figures for births, deaths, and infant deaths for California shown in tables 2 and 4 contain adjustments for varying length of State reporting periods. Figures for Texas for all events shown in tables 2-4 also are adjusted for varying length of State reporting periods. The figures for both States are adjusted by the ratio between the number of days in the data month and the number of days in the State reporting period. The adjusted figures are included in the U.S. totals shown elsewhere in this report.

U.S. totals for births, deaths, and infant deaths are based on the State estimates by State of residence and, therefore, in effect, exclude events to nonresidents of the United States. Events to nonresidents of the United

States are included in all marriage and divorce figures. The effect of excluding events to nonresidents from the U.S. totals is small.

Provisional totals for the United States include estimates for State data shown as not available. Provisional totals for births and marriages for the entire United States include adjustments for observed differences between provisional and final monthly figures.

Divorce figures include reported annulments. The monthly national divorce estimate is obtained by multiplying the total for the reporting areas by the ratio observed between the most recent final annual divorce total for the United States and the provisional total for the reporting areas combined.

Random variation—Although the counts in this report are not subject to sampling variability (except the Current Mortality Sample), they may be affected by random variation. When the number of events is small and the probability of such an event is small, considerable caution must be observed in interpreting the data. Such infrequent events may be assumed to follow a Poisson probability distribution. For this distribution a simple approximation may be used to estimate the random variation as follows:

If N is the number of events in the population and R is the corresponding rate, the chances are 19 in 20 that

$$1. N - 2\sqrt{N} \text{ and } N + 2\sqrt{N}$$

covers the "true" number of events.

$$2. R - 2\frac{R}{\sqrt{N}} \text{ and } R + 2\frac{R}{\sqrt{N}}$$

covers the "true" rate.

If the rate R_1 corresponding to N_1 events is compared with the rate R_2 corresponding to N_2 events, the difference between the two rates may be regarded as statistically significant at the 0.05 level if it exceeds

$$2\sqrt{\frac{R_1^2}{N_1} + \frac{R_2^2}{N_2}}$$

Additional information on random variation in numbers of events, rates, and ratios may be found in the technical

appendixes of *Vital Statistics of the United States, 1989*, volumes I and II.

Rates

Rates are on an annual basis and, except for infant mortality rates, are per 1,000 or 100,000 estimated population residing in the United States. The populations used for computing these rates are furnished by the U.S. Bureau of the Census. Rates shown in this report were computed using populations comparable to those used for final data. Monthly rates are based on populations estimated for the specific month. Year-to-date rates are averages of monthly rates that have been weighted by the number of days in the corresponding months. Rates for 12-month periods are the sum of events for the period per population estimated at the midpoint of the period.

Infant mortality rates are deaths under 1 year of age for the specified period (monthly, year-to-date, or 12-month period) per 1,000 or 100,000 live births. Births used for computing monthly and year-to-date infant mortality rates are adjusted for monthly variation in the number of births. Births used to compute 12-month rates do not contain this adjustment. Births used for computing infant mortality rates are not corrected for observed differences between provisional and final monthly figures as described in Nature and sources of data. Because monthly infant mortality rates are based on relatively few events, they are highly variable. Therefore, comparisons of monthly infant mortality rates should be interpreted cautiously; see Random variation.

Age-adjusted death rates are used to compare relative mortality risks across groups and over time. However, they should be viewed as constructs or indexes rather than as direct or actual measures of mortality risk. Statistically, they are weighted averages of the age-specific death rates, where the weights represent the fixed population proportions by age. See chapter 5 of an earlier report (2). The age-adjusted death rates presented in this report were computed by the direct method, that is, by applying age-specific death rates to the U.S. standard million population (3). See also chapter 10 of an earlier report (2). Age groups in table 5 were used to compute the age-adjusted

rates shown in that table. The age-adjusted death rates on which the State maps are based and which are shown with the State maps were computed from average annual age-specific death rates in 10-year age groups for the specified 3-year period. The average annual age-specific death rates were computed by dividing the number of deaths in an age group for the 3-year period by three times the population in that age group estimated at the midpoint of the period (4). It is important not to compare age-adjusted rates with crude rates.

Current Mortality Sample

The Current Mortality Sample (CMS) is a 10-percent systematic sample of death certificates drawn each month after the certificates are counted in the State registration offices. Deaths and death rates for the United States by age, race, sex, and cause are estimated based on the sample. Because of the additional time required to select and process the certificates, data based on the CMS are published 1 month after publication of the U.S. and State counts. Complete information concerning the underlying cause of death sometimes is not available when the sample is drawn. As a result, estimates based on sample counts for certain causes are biased. Correction for bias is not made in this report but is made in the annual summary (issue number 13 in this series) each year.

Estimated numbers of deaths based on the sample were proportionately adjusted to be consistent with estimates based on the count of death certificates received in State registration offices.

HIV infection—Beginning with data for 1987, the National Center for Health Statistics introduced category numbers *042–*044 for classifying and coding Human immunodeficiency virus infection. The asterisk before the category numbers indicates that these codes are not part of the *Ninth Revision, International Classification of Diseases*. Deaths classified to these categories are included in All other infectious and parasitic diseases in the List of 72 Selected Causes of Death and are also shown separately at the bottom of table 6.

Sampling variability—Because the estimates of deaths and death rates presented in this report (with the exception of total deaths and deaths under 1 year) are based on a sample of death certificates, they are subject to sampling variability. The estimated relative standard error shown in the following table is a measure of the sampling error of the estimated number of deaths (or of the estimated death rate) expressed as a percent of the estimate. The first column refers to monthly estimates; the second, to annual; cumulative year-to-date totals fall between the two.

The chances are about 2 in 3 that the percent difference between an estimate and the result of a complete count is less than the percent shown. The chances are about 19 in 20 that the percent difference is less than twice the percent shown. A figure based on 100 or fewer estimated deaths has a relative standard error of 30 percent or more and is, therefore, considered unreliable. A rate based on 100 or fewer estimated deaths has been replaced by an asterisk.

Unless otherwise specified, comparisons made in the text between death rates based on the CMS were statistically significant at the 0.05 level of significance. Lack of comment in the text about any two rates does not mean

that the difference was tested and found not to be significant at this level.

Mortality Surveillance System—The Mortality Surveillance System (MSS) charts are based entirely on monthly provisional data from the CMS. Where sample size permits, age-race-sex comparisons are made for the causes of death. Where sample size is too small, only age-sex comparisons are made. A time series regression model of the following form was used:

$$Y(t) = A_0 + A_1t + A_2t^2 + C \cos(2\pi t/12) + S \sin(2\pi t/12) + \epsilon_t$$

where

- $Y(t)$ = monthly death rate at time t
- t = month number
- A_0 = coefficient, which, together with C determines the Y -intercept
- A_1 = coefficient of t
- A_2 = coefficient of t^2
- C, S = coefficients of the harmonic terms
- ϵ_t = error terms, assumed to be independent and normally distributed with means 0 and constant variances,

and $\cos(2\pi t/12)$ and $\sin(2\pi t/12)$ are 12-month period harmonic functions.

The coefficients of this model were estimated using provisional monthly death rates for January 1985 through the month that is 12 months prior to the latest month shown in the chart. The graph of the estimated equation and 95-percent prediction intervals is shown for January 1986 through the month that is 12 months prior to the latest month shown in the chart; the graph for the subsequent 12 months is projected (5). Symbols in each chart represent actual monthly death rates based on the CMS. In some cases the data are converted by the natural logarithm before fitting the model. For graphical purposes the data are converted back to rates by the inverse of the natural logarithm. This procedure has the advantage of avoiding negative prediction intervals for the model. The models, parameter estimates, and statistical tests for lack of fit are available on request for the charts published in the MSS. Time series

Relative standard errors for estimated numbers of deaths from the Current Mortality Sample expressed as a percent of the estimate

Estimated number of deaths	Relative standard error of estimate (as percent)	
	170,000 estimated deaths each month	2,000,000 estimated deaths each year
10	94.9	94.9
20	67.1	67.1
50	42.4	42.4
100	30.0	30.0
200	21.2	21.2
500	13.4	13.4
1,000	9.5	9.5
2,000	6.7	6.7
5,000	4.2	4.2
10,000	2.9	3.0
20,000	2.0	2.1
50,000	1.1	1.3
100,000	0.6	0.9
200,000	0.6
500,000	0.4
1,000,000	0.2

regression models have been used previously to describe trends in mortality data (6–8). A list of MSS cause-of-death topics and comparable *Healthy People 2000* (1) objectives is presented on the back of this report.

State maps

Unlike other data presented in this report, the State maps are based on final data instead of provisional data. The age-adjusted death rates used to produce the State maps were computed by using a 3-year total number of deaths for 1989–91 and the 1990 census population enumerated as of April 1, 1990 (4). Assigning the States into the given categories on the maps was carried out in two steps: a) determining whether the State age-adjusted death rate differed significantly from the corresponding U.S. rate at the 0.05 level of significance; b) then grouping the State rates found to be significantly different from the U.S. rate into the four categories: 10 highest State rates of those significantly greater than the U.S. rate, remaining State rates significantly greater than the U.S. rate, 10 lowest State rates of those significantly lower than the U.S. rate, and remaining State rates significantly lower than the U.S. rate. Age-adjusted death rates and the corresponding 95-percent confidence intervals are shown in the tables. The symbols † and †† in the tables are used to denote State rates that differ significantly from the U.S. rate at the 0.05 and 0.01 levels of significance, respectively. Different procedures were used to determine tests of statistical significance and confidence intervals, depending on the number of deaths.

For 50 deaths or more, the standard normal Z statistic was used to perform the significance test:

$$Z = (R'_s - R'_{us}) / \sqrt{S^2(R'_s) + S^2(R'_{us})}$$

where

R'_s = age-adjusted rate for

1989–91 for the given State per 100,000 U.S. standard million population

R'_{us} = age-adjusted rate for 1989–91 for the United States per 100,000 U.S. standard million population

$S^2(R'_s)$ = estimated variance of the age-adjusted death rate for 1989–91 for the State

$S^2(R'_{us})$ = estimated variance of the age-adjusted death rate for 1989–91 for the United States

The variance of the age-adjusted death rate was computed in terms of the variances of age-specific death rates (9) under the assumption that the age-specific death rates are binomial proportions (10). The 95-percent confidence limits were estimated as follows:

$$\text{Lower limit} = R'_s - 1.96 \cdot S(R'_s)$$

and

$$\text{Upper limit} = R'_s + 1.96 \cdot S(R'_s)$$

For 1–49 deaths the lower and upper 95-percent confidence limits were estimated as described elsewhere (11). The difference between the State and U.S. age-adjusted rates was determined to be statistically significant at the 0.05 or 0.01 level if the rates' respective 95-percent or 99-percent confidence limits did not overlap.

For zero deaths, the following test statistic (λ) was used to perform the significance test:

$$\lambda = \left[\sum_{x=1}^n M_{x(us)} \cdot P_{x(s)} \right] / 100,000$$

where

$M_{x(us)}$ = age-specific death rate per 100,000 population in the x th age group for the United States

$P_{x(s)}$ = population in the x th age group for the given State

n = number of age groups = 11.

The difference between the State and U.S. age-adjusted rates was determined to be statistically significant at the 0.05 level

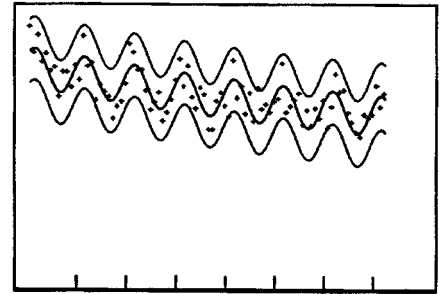
if $3.00 \leq \lambda < 4.61$. The difference between the State and U.S. age-adjusted rates was determined to be statistically significant at 0.01 level if $\lambda \geq 4.61$ (12). For zero deaths, confidence limits for the age-adjusted death rates are not applicable.

References

1. U.S. Department of Health and Human Services. *Healthy People 2000: National health promotion and disease prevention objectives*. Washington: Public Health Service. 1991.
2. Feinleib M, Zarate AO, eds. *Reconsidering age adjustment procedures: Workshop proceedings*. National Center for Health Statistics. *Vital Health Stat* 4(29). 1992.
3. Grove RD, Hetzel AM. *Vital statistics rates in the United States, 1940–1960*. Public Health Service. Washington: National Center for Health Statistics. 1968.
4. U.S. Bureau of the Census. Unpublished data from the 1990 census consistent with State population estimates by age and sex: 1980 to 1992; series P-25, no 1106. U.S. Government Printing Office, 1993.
5. Ostle B. *Statistics in research*. 2d ed. Ames, Iowa: The Iowa State University Press. 159–221. 1963.
6. Lui KJ, Kendal AP. Impact of influenza epidemics on mortality in the United States from October 1972 to May 1985. *Am J Public Health* 77(6):712–6. 1987.
7. Serfling RE. Methods for current statistical analysis of excess pneumonia-influenza deaths. *Public Health Rep* 78(6):494–506. 1963.
8. Shumway RH. *Applied statistical time series analysis*. Englewood Cliffs, New Jersey: Prentice-Hall 1988.
9. Chiang CL. Standard error of the age-adjusted death rate. *Vital statistics-Special reports*. 47(9). National Office of Vital Statistics. Washington: Public Health Service. 1961.
10. Seal HL. Mortality data and the binomial probability law. *Skand. Actuar*. 33:188–216. 1949.
11. Haenszel W, Loveland DB, Sirken MG. Lung cancer mortality as related to residence and smoking histories. I. White males. *JNCI* 28:947–1001. 1962.
12. Louis TA. Confidence intervals for a binomial parameter after observing no successes. *The American Statistician* 35(3):154. 1981.

Mortality Surveillance System topics

<i>MVSR issue</i>	<i>Cause-of-death</i>	<i>Healthy People 2000 Objective Number</i>
Vol. 42 No. 11	Accidents and adverse effects, Homicide and legal intervention	9.1, 7.1 ⁽¹⁾
Vol. 42 No. 12	Infant mortality, Neonatal mortality, Postneonatal mortality, and Sudden infant death syndrome	14.1 ⁽²⁾
Vol. 43 No. 1	Human immunodeficiency virus infection	⁽³⁾
Vol. 43 No. 2	Cerebrovascular diseases	15.2
Vol. 43 No. 3	Chronic obstructive pulmonary diseases and allied conditions	3.3
Vol. 43 No. 4	Diabetes mellitus	17.9
Vol. 43 No. 5	Diseases of heart	1.1 (2.1, 3.1, 15.1)
Vol. 43 No. 6	Malignant neoplasms including neoplasms of lymphatic and hematopoietic tissues	2.2 (16.1)
Vol. 43 No. 7	Malignant neoplasms of trachea, bronchus, and lung	3.2 (16.2)
Vol. 43 No. 8	Malignant neoplasm of prostate, Malignant neoplasm of breast	⁽⁴⁾ , 16.3
Vol. 43 No. 9	Motor vehicle accidents	9.3
Vol. 43 No. 10	Suicide	6.1 (7.2)



¹No *Healthy People 2000* objective addresses mortality from Legal intervention.
²No *Healthy People 2000* objective addresses mortality from Sudden infant death syndrome.
³No *Healthy People 2000* objective addresses mortality from this cause. See Chapter 18 for objectives related to Human immunodeficiency virus infection.
⁴No *Healthy People 2000* objective addresses mortality from Malignant neoplasm of prostate.

NOTE: The cause-of-death categories used in *Healthy People 2000* objective(s) may differ from those used in NCHS Mortality Tabulation Lists.

Suggested citation

National Center for Health Statistics. Births, marriages, divorces, and deaths for October 1994. Monthly vital statistics report; vol 43 no 10. Hyattsville, Maryland: Public Health Service. 1995.

Copyright information

All material appearing in this report is in the public domain and may be reproduced or copied without permission; citation as to source, however, is appreciated.

National Center for Health Statistics

Acting Director
 Jack R. Anderson

Acting Deputy Director
 Jennifer H. Madans, Ph.D.

Associate Director for
 Vital and Health Statistics Systems
 Peter L. Hurley

Division of Vital Statistics

Acting Director
 Mary Anne Freedman

DEPARTMENT OF HEALTH & HUMAN SERVICES

Public Health Service
 Centers for Disease Control and Prevention
 National Center for Health Statistics
 6525 Belcrest Road
 Hyattsville, Maryland 20782

FIRST CLASS MAIL
 POSTAGE & FEES PAID
 PHS/NCHS
 PERMIT NO. G-281

OFFICIAL BUSINESS
 PENALTY FOR PRIVATE USE, \$300

To receive this publication regularly, contact the National Center for Health Statistics by calling 301-436-8500

DHHS Publication No. (PHS) 95-1120
 4-1068 (4/95)