

# INSTALLATION

This section explains the system requirements to successfully install and run the SDE tool and provides instructions for computers running Microsoft operating systems Windows XP<sup>®</sup>, Windows Vista<sup>®</sup>, Windows 7<sup>®</sup>, and Windows 8<sup>®</sup>.

The SDE tool can be installed from either a FEMA SDE 2.2.0 CD or a zip file available on the FEMA Web site. Each installation version (CD or download) includes all the files required to run the SDE Version 2.2.0 Tool. The SDE Version 2.2.0 Tool was developed using Microsoft .NET 4.0 Framework and should not interfere with other existing applications already loaded on the computer. The SDE Version 2.2.0 installation file can be found at <http://www.fema.gov/library/viewRecord.do?id=4166>.

## System Requirements

Users must have *full local administrative rights* on the host computer where the tool is to be installed or must have someone with administrative rights perform the installation. The requirement of administrative rights for installing the SDE tool is set by the agency, community, or other entity that is responsible for the security and maintenance of the user's computer. In addition, if the user does not have full-time administrative rights, the user must install the application in a folder where local write privileges are granted. This is usually the "My Documents" folder on the root directory of the host computer.

Table 1 provides the minimum system requirements to run the SDE tool successfully.

**Table 1: Minimum System Requirements to Run the SDE 2.2.0 Tool**

<b>System Element</b>	<b>Recommendation</b>
Processor	32-bit processor, with a 1 gigahertz (GHz) or faster processor
Framework	.NET ("dot NET") Framework 4.0 If .NET Framework 4.0 is not already installed, the SDE installation routine will attempt to install the Framework on the host computer during the SDE 2.2.0 installation.
Operating system	Windows XP with Service Pack 3 or later Windows Vista (32-bit or 64-bit) Windows 7 Windows 8
Memory	1 gigabyte (GB) minimum 2 GB or more recommended
Hard disk space	Approximately 300 megabytes (MB) of available hard-disk space If SDE is installed on a network drive, set up in standalone mode.
Display	Super VGA (1,024x768 pixels) or higher resolution video adapter and monitor

# INSTALLATION

---

Companion tool	Adobe Reader Version XI or higher Other Adobe Reader versions or other programs may work to display the PDF files, but the recommended version of Adobe Reader should be used for the help links in the tool to work as intended.
Companion tool	Microsoft Office 2007 or later - or - Microsoft Office Access Database Engine 2007 If the user does not already have either of these software options installed, Microsoft Office Access Database Engine 2007 is included in the documentation folder within the directory where the SDE tool is installed. Locate the SDE2.2.0 directory, click on the Documentation folder, then click Microsoft_2007_AccessDatabaseEngine.exe to start the install process.

---

## Installation Steps

Prior to installing SDE 2.2.0, export and save any existing SDE data from previous versions of the SDE Tool. Uninstall all previous versions of the SDE tool from the host computer using the Windows Add/Remove Programs function.

### Installing using the FEMA SDE 2.2.0 CD

1. Insert the CD into the computer. Go to My Computer and select the CD drive.
2. Double-click on *setup.exe* as shown in Figure 1.

### Installing using a zip file downloaded from the FEMA Web site

1. After opening the FEMA Web site ([www.fema.gov](http://www.fema.gov)), search on “SDE” or use the SDE Web page (<http://www.fema.gov/library/viewRecord.do?id=4166>) to locate the SDE tool download function.
2. Download and unzip the SDE folder. Installation steps vary depending on the host computer setup and the unzip utility installed on the computer.
3. In many cases, users can unzip the folder by right-clicking and selecting the option *Extract All...* from the list of options or by double-clicking the zip folder and selecting the option *Extract all files* from the list of choices displayed. Some users may have an unzip utility installed that activates automatically when they click on the folder.

Double-click on *setup.exe* (Figure 1) to install the SDE tool.



**Figure 1: Setup.exe location**

When the *Welcome to the InstallShield Wizard for SDE- Substantial Damage Estimator* window appears, click *Next* to continue (Figure 2).

# INSTALLATION

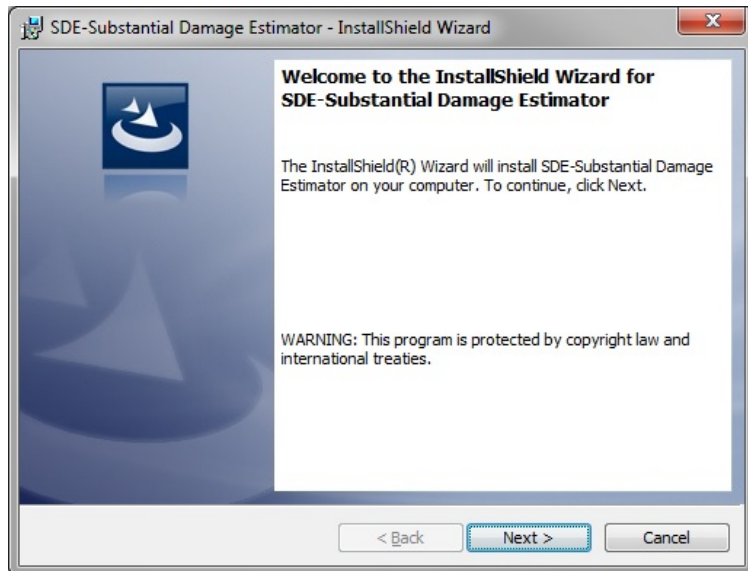


Figure 2: InstallShield Wizard Welcome

After the user accepts the License Agreement, they will see the *Destination Folder* window (Figure 2-3), which allows the user to proceed with the default location, or change the location of the installation. Click *Next* to continue.

**USER NOTE: Windows Vista, Windows 7, and Windows 8 Users** should replace the default installation path with C:\Users\*<user name>*\My Documents\Substantial Damage Estimator 2.2.0, where *<user name>* is your user name on the computer.

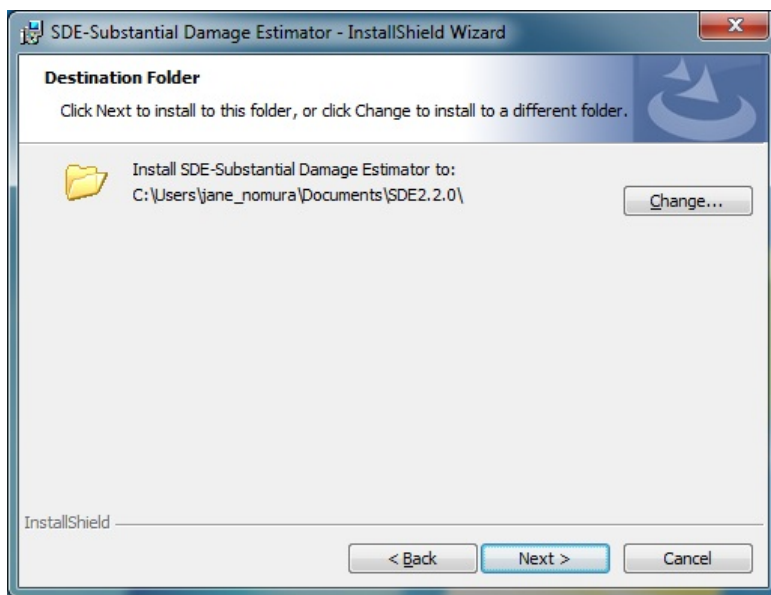


Figure 3: Selecting the destination folder

# INSTALLATION

When the *Ready to Install the Program* window appears, review the current settings then click *Install* to continue (Figure 4).

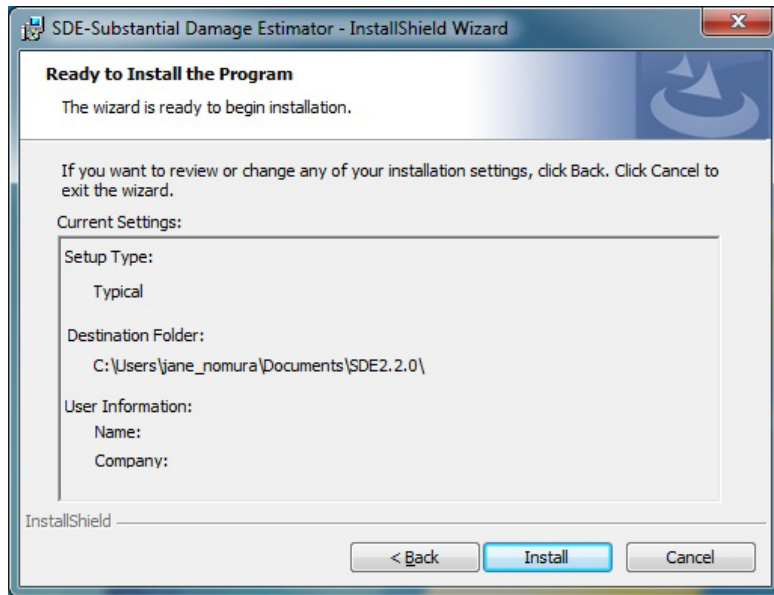


Figure 4: Confirming installation

Once the installation is complete, click *Finish* (Figure 5).

**USER NOTE:** A host computer can only have one installation of the SDE tool.

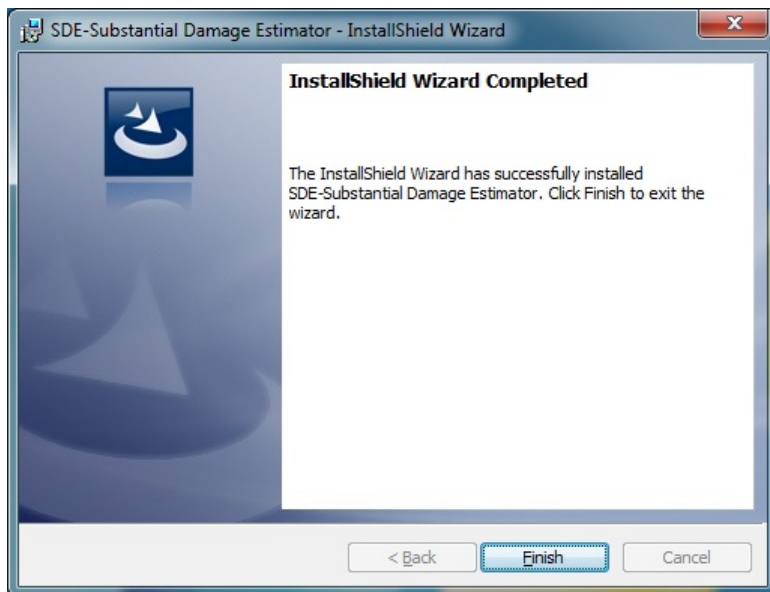


Figure 5: Completed installation screen

## INSTALLATION

The installation process will place an SDE icon similar to the one in Figure 6 on the host computer desktop. Double-click the icon to run the SDE tool.



**Figure 6: The SDE icon**

### Selection of the Database Type

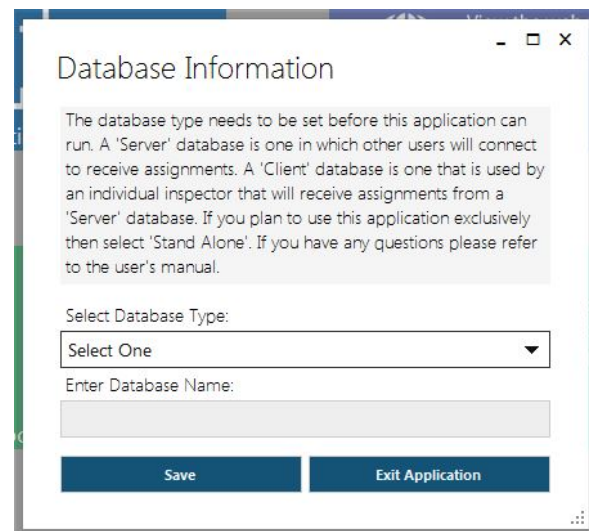
The first time the tool is run on the host computer, the *Database Information* window (Figure 7) will appear, prompting the user to select the database type. The database type determines whether the user can make or obtain assignments for SDE field data collection.

Select *Server* if you are a supervisor and will be assigning properties to inspectors.

Select *Client* if you are an inspector and will be receiving property assignments.

Select *Stand Alone* if you will not be making or receiving assignments.

After selecting the database type, the user may enter a database name.



**Figure 7: Selecting the database type during installation**

The selection of the database type can only be made when opening the tool for the first time after installation. If a database type is not selected when the tool is first opened and the user needs to be able to make or obtain assignments, the user must export the SDE data previously entered (if any), uninstall the SDE tool, reinstall it, and then import the previous SDE data.

See Section 3 of the SDE 2.2.0 User Manual for additional information on client and server machines.