

New Hampshire: 2010

Population and Housing Unit Counts

2010 Census of Population and Housing

Issued August 2012

CPH-2-31



New Hampshire: 2010

Population and Housing Unit Counts

Issued August 2012

CPH-2-31



U.S. Department of Commerce

Rebecca M. Blank,
Acting Secretary

Rebecca M. Blank,
Deputy Secretary

Economics and Statistics Administration

Vacant,
Under Secretary
for Economic Affairs

U.S. CENSUS BUREAU
Thomas L. Mesenbourg,
Acting Director

SUGGESTED CITATION

U.S. Census Bureau,
2010 Census of
Population and Housing,
*Population and
Housing Unit Counts*,
CPH-2-31, New Hampshire
U.S. Government Printing Office,
Washington, DC,
2012



**Economics
and Statistics
Administration**

Vacant,
Under Secretary for
Economic Affairs



U.S. CENSUS BUREAU

Thomas L. Mesenbourg,
Acting Director

Nancy A. Potok,
Deputy Director and
Chief Operating Officer

Vacant,
Associate Director
for Demographic Programs

Enrique J. Lamas,
Chief, Population Division

CONTENTS

List of Statistical Tables	v
How to Use This Census Report	I-1
Table Finding Guide	II-1
User Notes	III-1
Crosswalk of Urban Areas and Places: 2010	IV-1
Statistical Tables	1
Appendixes	
A Geographic Terms and Concepts	*
B Definitions of Subject Characteristics	*
C Data Collection and Processing Procedures	*
D Questionnaire	*
E Maps	E-1
F Operational Overview and Accuracy of the Data	*
G Residence Rule and Residence Situations for the 2010 Census of the United States	*
H Acknowledgments	*

*Appendix may be found in the separate volume, CPH-2-A, *Population and Housing Unit Counts, Selected Appendixes*, in print and on the Internet at <www.census.gov/prod/cen2010/cph-2-a.pdf>.

LIST OF
STATISTICAL
TABLES

Table no.	Title	Page
1.	Population: Earliest Census to 2010; and Housing Units: 1950 to 2010 State, Urban and Rural	1
2.	Population, Housing Units, and Land Area by Urban and Rural and Size of Urban Area: 2010 State, Urban and Rural, Size of Urban Area [Population]	2
3.	Population by Urban and Rural and Size of Place: 2010 State, Size of Place [Population]	4
4.	Population and Housing Units: 1970 to 2010 State, County/County Equivalent	6
5.	Population, Housing Units, Land Area, and Density: 2010; and Percent Change: 1980 to 2010 State, County/County Equivalent	7
6.	Rank of Counties by Percent Change in Population: 2000 to 2010 County/County Equivalent	8
7.	Population by Urban and Rural: 2010 State, County/County Equivalent	9
8.	Population and Housing Units: 1990 to 2010; and Area Measurements and Density: 2010 State, County/County Equivalent, County Subdivision, Place	10
9.	Population and Housing Units: 1990 to 2010; and Area Measurements and Density: 2010 State, Place and [in Selected States] County Subdivision	16
10.	Rank by 2010 Population and Housing Units: 2000 and 2010 Place [2,500 or More Population]	26
10a.	Rank by 2010 Population and Housing Units: 2000 and 2010 Minor Civil Division [2,500 or More Population]	27
11.	Rank of Places by Percent Change in Population: 2000 to 2010 Place [2,500 or More Population]	29
11a.	Rank of Minor Civil Divisions by Percent Change in Population: 2000 to 2010 Minor Civil Division [2,500 or More Population]	30
12.	Population and Housing Units for Urban Areas: 2010 State, Urbanized Area, Urban Cluster	31

How to Use This Census Report

CONTENTS

	Page
Introduction	I-1
How to Find Geographic Areas and Subject Matter Data	I-2
How to Use the Statistical Tables	I-2
Graphics	I-5
User Notes	I-5
Appendixes	I-5

INTRODUCTION

Data from the 2010 Census for the United States and Puerto Rico are presented in two printed report series and a single report for American Indians and Alaska Natives by tribe:

1. CPH-1, *Summary Population and Housing Characteristics*
2. CPH-2, *Population and Housing Unit Counts*
3. CPH-3, *Characteristics of American Indians and Alaska Natives by Tribe*

The data from the 2010 Census were derived from a limited number of basic questions asked of the entire population and about every housing unit. Appendix D (see *Selected Appendixes* report at <www.census.gov/prod/cen2010/cph-2-a.pdf>) presents a facsimile of the questionnaire pages used to collect the data included in this report. Note that the "long form" data included in previous censuses are not included in the 2010 Census.

The CPH-1, *Summary Population and Housing Characteristics*, report series provides data based on age, Hispanic or Latino origin, household relationship, race, sex, tenure (owner- or renter-occupied), and vacancy characteristics. Land area measurements and population density also are provided. This series is similar to the Census 2000 PHC-1 series.

The CPH-2, *Population and Housing Unit Counts*, report series provides 2010 Census and historical comparisons of the population and housing unit counts. It also provides area measurements and density. The user notes section documents geographic changes over the past decade. This series is similar to the Census 2000 PHC-3 series.

In each series, there is one report for each state, the District of Columbia, and Puerto Rico, plus a United States summary report. Many tables in the United States summary reports include data for Puerto Rico.

The CPH-3, *Characteristics of American Indians and Alaska Natives by Tribe*, report provides population and housing information for selected American Indian and Alaska Native tribes. This report is similar to the Census 2000 PHC-5 report. This is a single report covering the entire United States.

HOW TO FIND GEOGRAPHIC AREAS AND SUBJECT MATTER DATA

This report includes a table finding guide to assist the user in locating those statistical tables that contain the desired data. The table finding guide lists alphabetically, by geographic area, the subjects shown in this report. To determine which tables in this report show data for a particular topic, find the subject in the left-hand column of the table finding guide and then look across the columns using the headings at the top for the desired type of geographic area. Figure I-1 is an example of a table finding guide.

The table finding guide does not include cross-classification of subject-matter items. Additional information to locate data within specific reports is provided in the headnote at the top of the table finding guide and in the footnotes at the bottom of the guide.

Figure I-1.

Table Finding Guide

SUBJECTS BY TYPE OF GEOGRAPHIC AREA AND TABLE NUMBER

The types of geographic areas covered in this report are shown on the side, and subjects are shown at the top. See CPH-2-A, *Population and Housing Unit Counts, Selected Appendixes* (<www.census.gov/prod/cen2010/cph-2-a.pdf>), for a description of area classifications (Appendix A) and for definitions and explanations of subject characteristics (Appendix B).

Geographic area	Population			Housing units			Area measurement		Average per square mile of land (density)		Number of places
	2010 Census	Previous censuses	Change from previous census	2010 Census	Previous censuses	Change from previous census	Total area	Land area	Population	Housing units	
THE STATE¹											
Total	1,2,3,4,5,7,8,9,12	1,4,8,9	1,5,9	1,2,4,5,8,9,12	1,4,8,9	1,5,9	8,9	2,5,8,9	5,8,9	5,8,9	1,3
Urban and rural	1,2,3,7,12	1	1	1,2,12	1	1	—	2	—	—	3
Current urban definition	1,2,7,12	1	1	1,2,12	1	1	—	2	—	—	—
1950–90 urban definition	1	1	1	1	1	1	—	—	—	—	—
Urban and rural by size of place	3	—	—	—	—	—	—	—	—	—	3
In urbanized area and in urban cluster	2,7,12	—	—	2,12	—	—	—	2	—	—	—
Size of urban area	2	—	—	2	—	—	—	2	—	—	—
In place and not in place	3,7	—	—	—	—	—	—	—	—	—	3
COUNTY²											
Total	4,5,6,8	4,6,8	5,6	4,8	4,8	5	8	5,8	5,8	5,8	—
Urban and rural	7	—	—	—	—	—	—	—	—	—	—
By percent change rank	6	6	6	—	—	—	—	—	—	—	—
COUNTY SUBDIVISION³											
By county	8	8	—	8	8	—	8	8	8	8	—
Alphabetically	9	9	9	9	9	9	9	9	9	9	—
By 2010 rank	10a	10a	—	10a	10a	—	—	—	—	—	—
By percent change rank	11a	11a	11a	—	—	—	—	—	—	—	—
PLACE											
By county and county subdivision	8	8	—	8	8	—	8	8	8	8	—
Alphabetically	9	9	9	9	9	9	9	9	9	9	—
By 2010 rank	10	10	—	10	10	—	—	—	—	—	—
By percent change rank	11	11	11	—	—	—	—	—	—	—	—
URBAN AREA											
Urbanized area and urban cluster	12	—	12	—	—	—	—	—	—	—	—

¹ State, District of Columbia, or Puerto Rico.

² Parish in Louisiana; city and borough, municipality, borough, or census area in Alaska; and municipio in Puerto Rico; in Maryland, Missouri, Nevada, and Virginia, one or more cities are independent of counties and are treated as statistical equivalents of counties; the entire District of Columbia, which has no counties, is treated as a county equivalent.

³ County subdivisions within the state are shown alphabetically with places for the following 12 states: Connecticut, Maine, Massachusetts, Michigan, Minnesota, New Hampshire, New Jersey, New York, Pennsylvania, Rhode Island, Vermont, and Wisconsin.

HOW TO USE THE STATISTICAL TABLES

Parts of a Statistical Table

The census data included in printed reports are arranged in tables. Each table includes four major parts: (1) heading, (2) boxhead, (3) stub, and (4) data field. A typical census report table is illustrated in Figure I-2.

The heading consists of the table number, title, and headnote. The table number indicates the position of the table within the report, while the title is a brief statement indicating the subjects and time reference of the data presented in the table. The headnote is enclosed in brackets and is located under the title. It contains statements that qualify, explain, or provide information pertaining to the entire table.

Figure I-2.
PARTS OF A STATISTICAL TABLE

Table number and title: Table 6. Population for Selected Categories of Race: 2010

Headnote: [For information on confidentiality protection, nonsampling error, and definitions, see Selected Appendixes at <www.census.gov/prod/cen2010/cph-1-a.pdf>]

Column head: Race in combination with one or more other races; Race alone or in combination with one or more other races

Heading: Table 6. Population for Selected Categories of Race: 2010

Stubhead: State, County, Place

Sidehead: COUNTY, PLACE

Stub: Delaware, Kent County, New Castle County, Sussex County, Arden village, New Castle County, Ardenzroff village, New Castle County, Ardenzroff village, New Castle County, Bear CDP, New Castle County, Belkfonte town, New Castle County, Bethany Beach town, Sussex County, Bethel town, Sussex County, Blades town, Sussex County, Bowen town, Kent County, Bridgeville town, Sussex County, Brydside CDP, New Castle County, Camden town, Kent County, Cheswold town, Kent County, Claymont CDP, New Castle County, Clayton town, Kent County (part), New Castle County (part), Dagsboro town, Sussex County, Delaware city, New Castle County, Delmar town, Sussex County, Dewey Beach town, Sussex County, Dover city, Kent County, Dover Base Housing CDP, Kent County, Edgemoor CDP, New Castle County, Ellendale town, Sussex County, Elmire town, New Castle County, Farmington town, Kent County, Felton town, Kent County, Fenwick Island town, Sussex County, Frankford town, Sussex County, Frederica town, Kent County, Georgetown town, Sussex County, Glasgow CDP, New Castle County, Greenville CDP, New Castle County, Greenwood town, Sussex County, Harrington city, Kent County, Hartly town, Kent County, Henrieville Acres town, Sussex County, Highland Acres CDP, Kent County, Hockessin CDP, New Castle County, Houston town, Kent County, Kent Acres CDP, Kent County, Kenton town, Kent County, Laurel town, Sussex County, Lewis city, Sussex County, Little Creek town, Kent County, Long Neck CDP, Sussex County, Magnolia town, Kent County, Middletown town, New Castle County, Milford town, Kent County, Kent County (part), Sussex County (part), Millboro town, Sussex County, Millville town, Sussex County, Milton town, Sussex County, Newark city, New Castle County, Newark city, New Castle County, Newport town, New Castle County, North Star CDP, New Castle County, Ocean View town, Sussex County, Odessa town, New Castle County

Boxhead: White, Black or African American, American Indian and Alaska Native, Asian, Native Hawaiian and Other Pacific Islander, Some Other Race, White, Black or African American, American Indian and Alaska Native, Asian, Native Hawaiian and Other Pacific Islander, Some Other Race

Data field: Numerical values representing population counts for each category and location.

20 Delaware
State name and page number

Summary Population and Housing Characteristics
U.S. Census Bureau, 2010 Census
Report title

The boxhead is under the heading. This portion of the table, which contains the individual column heads or captions, describes the data in each vertical column. In the boxhead of many tables, a spanner appears across and above two or more column heads or across two or more lower spanners. The purpose of a spanner is to classify or qualify items below it or separate the table into identifiable blocks in terms of major aspects of the data.

The stub is located at the left edge of the table. It includes a listing of line or row captions or descriptions. At the top of the stub is the stubhead. The stubhead is considered to be an extension of the table title and usually shows generic geographic area designations and restrictions.

In the stub, several features are used to help the user better understand the contents of the table. Usually, a block of data lines is preceded by a sidehead. The sidehead, similar to a spanner, describes and classifies the stub entries following it. The use of indentation in a stub indicates the relationship of one data line to another. Indented data lines represent subcategories that, in most instances, sum to a total. Occasionally in tables, it is desirable to show one or more single-line subcategories that do not sum to the total.

The data field is that part of the statistical table that contains the data. It extends from the bottom of the boxhead to the bottom of the table and from the right of the stub to the right edge of the page.

Both geographic and subject-matter terms appear in tables. It is important to read the definitions of the terms used in the tables because census terms often are defined in special ways that reflect the manner in which the questions were asked and the data were tabulated. Definitions of geographic terms are provided in Appendix A of CPH-2-A, *Population and Housing Unit Counts, Selected Appendixes* (<www.census.gov/prod/cen2010/cph-2-a.pdf>). Census tables often include derived measures such as medians, means, percentages, and ratios. These and other subject-matter terms are defined in Appendix B of the same report.

Symbols and Geographic Abbreviations

The following symbols are used in the tables and explanations of subjects covered in 2010 Census reports:

- A dash “–” represents zero or a derived measure that rounds to less than 0.1.
- (X) means not applicable. In the 1990 and earlier decennial census reports, three dots “. . .” meant not applicable.
- (NA) means not available.
- The superscript prefix “r” indicates that a Census 2000 count has been revised since the publication of the Census 2000 reports as a result of certified Count Question Resolution (CQR) changes (see also <www.census.gov/prod/cen2000/notes/errata.pdf>). This symbol appears only in the 2010 Census CPH-2, *Population and Housing Unit Counts*, report series.
- A minus sign “–” preceding a figure denotes decrease. The minus sign appears only in the 2010 Census CPH-2, *Population and Housing Unit Counts*, report series.

The following are examples of geographic abbreviations and terms that may be used in the tables in this report:

- A “(part)” next to the name of a geographic area in a hierarchical presentation indicates that the geographic entity is located only partially in the superior geographic entity. For example, a “(part)” next to a place name in a county subdivision-place hierarchy indicates that the place is located in more than one county subdivision. (Places also may be “split” by county, congressional district, urban/rural, metropolitan area, voting district, and other geographic boundaries, depending on the presentation.) Other geographic entities also can be “split” by a higher-level entity. The exception is a tabulation block, which is unique within all geographic entities in census products.
- ANVSA is Alaska Native village statistical area.
- ANRC is Alaska Native Regional Corporation.
- CCD is census county division.
- CDP is census designated place.
- CSA is combined statistical area.
- NECTA is New England city and town area.
- Metro Area is metropolitan statistical area.

-
- Micro Area is micropolitan statistical area.
 - OTSA is Oklahoma tribal statistical area.
 - SDTSA is state designated tribal statistical area.
 - TDSA is tribal designated statistical area.
 - UT is unorganized territory.

GRAPHICS

Charts, statistical maps, and other graphic summaries are included in some 2010 Census reports.

USER NOTES

User notes include general explanatory information, historical notes, and geographic notes. They also provide information about unique characteristics of the report and sometimes changes or corrections made too late to be reflected in the text or tables themselves. However, sometimes this information becomes available too late to be reflected even in the user notes. Therefore, updates are available in the *Notes and Errata* document at <www.census.gov/prod/cen2010/notes/errata.pdf>.

APPENDIXES

Appendixes A through D, and F through H, described below, are in the separate printed volume, CPH-2-A, *Population and Housing Unit Counts, Selected Appendixes*, or on the Internet at <www.census.gov/prod/cen2010/cph-2-a.pdf>. Appendix E is included in this report.

Appendix A, Geographic Terms and Concepts. Provides definitions of the types of geographic areas and related information used in census products.

Appendix B, Definitions of Subject Characteristics. Contains definitions for the subject-matter terms used in census products, including explanations of derived measures, limitations of the data, and comparability with previous censuses. The subjects are listed alphabetically. Population characteristics are defined first, followed by the definitions of the housing subjects.

Appendix C, Data Collection and Processing Procedures. Explains the 2010 Census mission and scope and provides thumbnail descriptions of 2010 Census operations.

Appendix D, Questionnaire. Presents a facsimile of the 2010 Census questionnaire used to collect the data in this report.

Appendix E, Maps. Contains maps depicting the geographic areas shown in this report.

Appendix F, Operational Overview and Accuracy of the Data. Provides information on 2010 Census operations, including group quarters enumeration, confidentiality of the data, imputation of housing unit status and population counts, sources of errors in the data, and data editing.

Appendix G, Residence Rule and Residence Situations for the 2010 Census of the United States. Contains a description of the residence rule and residence situations used by Census Bureau staff to guide decisions on where people should be counted in the 2010 Census. This document is the basis for residence-related sections of questionnaires, collection instruments, field materials, and training materials.

Appendix H, Acknowledgments. Lists many of the U.S. Census Bureau staff who participated in report preparation.

Table Finding Guide

SUBJECTS BY TYPE OF GEOGRAPHIC AREA AND TABLE NUMBER

The types of geographic areas covered in this report are shown on the side, and subjects are shown at the top. See CPH-2-A, *Population and Housing Unit Counts, Selected Appendixes* (<www.census.gov/prod/cen2010/cph-2-a.pdf>), for a description of area classifications (Appendix A) and for definitions and explanations of subject characteristics (Appendix B).

Geographic area	Population			Housing units			Area measurement		Average per square mile of land (density)		Number of places
	2010 Census	Previous censuses	Change from previous census	2010 Census	Previous censuses	Change from previous census	Total area	Land area	Population	Housing units	
THE STATE¹											
Total	1,2,3,4,5,7,8,9,12	1,4,8,9	1,5,9	1,2,4,5,8,9,12	1,4,8,9	1,5,9	8,9	2,5,8,9	5,8,9	5,8,9	1,3
Urban and rural	1,2,3,7,12	1	1	1,2,12	1	1	—	2	—	—	3
Current urban definition	1,2,7,12	1	1	1,2,12	1	1	—	2	—	—	—
1950–90 urban definition	1	1	1	1	1	1	—	—	—	—	—
Urban and rural by size of place	3	—	—	—	—	—	—	—	—	—	3
In urbanized area and in urban cluster	2,7,12	—	—	2,12	—	—	—	2	—	—	—
Size of urban area	2	—	—	2	—	—	—	2	—	—	—
In place and not in place	3,7	—	—	—	—	—	—	—	—	—	3
COUNTY²											
Total	4,5,6,8	4,6,8	5,6	4,8	4,8	5	8	5,8	5,8	5,8	—
Urban and rural	7	—	—	—	—	—	—	—	—	—	—
By percent change rank	6	6	6	—	—	—	—	—	—	—	—
COUNTY SUBDIVISION³											
By county	8	8	—	8	8	—	8	8	8	8	—
Alphabetically	9	9	9	9	9	9	9	9	9	9	—
By 2010 rank	10a	10a	—	10a	10a	—	—	—	—	—	—
By percent change rank	11a	11a	11a	—	—	—	—	—	—	—	—
PLACE											
By county and county subdivision	8	8	—	8	8	—	8	8	8	8	—
Alphabetically	9	9	9	9	9	9	9	9	9	9	—
By 2010 rank	10	10	—	10	10	—	—	—	—	—	—
By percent change rank	11	11	11	—	—	—	—	—	—	—	—
URBAN AREA											
Urbanized area and urban cluster	12	—	12	—	—	—	—	—	—	—	—

¹ State, District of Columbia, or Puerto Rico.

² Parish in Louisiana; city and borough, municipality, borough, or census area in Alaska; and municipio in Puerto Rico; in Maryland, Missouri, Nevada, and Virginia, one or more cities are independent of counties and are treated as statistical equivalents of counties; the entire District of Columbia, which has no counties, is treated as a county equivalent.

³ County subdivisions within the state are shown alphabetically with places for the following 12 states: Connecticut, Maine, Massachusetts, Michigan, Minnesota, New Hampshire, New Jersey, New York, Pennsylvania, Rhode Island, Vermont, and Wisconsin.

User Notes

Additional information concerning this 2010 Census product may become available after this report is published. This information, called *Notes and Errata*, is available in portable document format (PDF) on the U.S. Census Bureau's Internet site at <www.census.gov/prod/cen2010/notes/errata.pdf>.

GENERAL NOTES

User Note 1

The user should be aware that there are limitations to many of these data. Please refer to the text provided with this report for further explanation of the limitations of the data. The population and other data shown for the 2010 Census in this report are as of April 1, 2010; the boundaries used for all geographic entities are as of January 1, 2010. All boundaries are intended for Census Bureau statistical data collection and presentation only; their depiction and designation for statistical purposes do not constitute a determination of jurisdictional authority or entitlement. Corrections to the 2010 Census data as a result of certified Count Question Resolution (CQR) changes are available from the Census Bureau's Internet site at <www.census.gov/prod/cen2010/notes/errata.pdf>.

User Note 2

Data comparability for county subdivisions is shown only when the county subdivision contains substantially the same territory as reported for Census 2000 (generally defined as at least 60 percent of the previous territory). There is no comparability provided for county subdivisions that have been extensively revised. Revised entities are noted by and within county. Changes to a geographic entity can be the result of legal change actions, statistical redefinition, correction of previous boundary or drafting errors, or new erroneous information.

Incorporated place and census designated place (CDP) comparability is provided for all places that retained their name or general area without regard to the amount of territorial change between censuses. Place comparability is not shown if the entity is new for the 2010 Census or is the result of a merger that created an entirely new entity, or if a 2010 Census geographic area shares no area with a Census 2000 area of the same name. American Indian area (including tribal subdivisions), Alaska Native area, and Hawaiian home land comparability follows the same rules as for place comparability.

User Note 3

When applicable, tables show the revised Census 2000 population and/or housing unit counts that resulted from the Count Question Resolution (CQR) program. These revised counts are accompanied by a prefix "r" symbol in the data tables.

Derived values (e.g., percent distribution, density, or change) that are calculated from Census 2000 population or housing unit counts only account for the aforementioned CQR revisions in certain cases.

- Calculations include the corrected Census 2000 counts when a table:
 - Shows population or housing unit change (or percent change) from 2000 to 2010.
 - Shows population or housing unit change (or percent change) from 1990 to 2000, and also shows the 2000 population or housing unit count that it is derived from.
 - Shows population or housing unit density or percent distribution in 2000, and also shows the 2000 population or housing unit count that it is derived from.

-
- Calculations do not include the corrected Census 2000 counts when a table:
 - Shows population or housing unit change (or percent change) from 1990 to 2000, but does not show the 2000 population or housing unit count that it is derived from.
 - Shows population or housing unit density or percent distribution in 2000, but does not show the 2000 population or housing unit count that it is derived from.
 - When a table shows component parts of a revised 2000 population or housing unit count (e.g., classified by urban/rural or by size of place), the component parts may not sum to the total population or housing unit count, because the component parts were not revised during the 2000 CQR program. Therefore, any derived values (e.g., percent distribution or number of places by population size) for the component parts cannot account for the revised Census 2000 counts either.

HISTORICAL NOTES

The area of New Hampshire was part of the original territory of the United States. It was originally included in the Charter of New England in 1620, but a separate grant established New Hampshire in 1629. In 1641, the area reunited with Massachusetts and separated and reunited several times until it finally became a separate provincial government in 1741. New Hampshire ratified the U.S. Constitution on June 21, 1788; it was the ninth of the original 13 states to join the Union. The state's boundary with Canada was not formally established until the Webster-Ashburton Treaty of 1842, when New Hampshire assumed generally the same boundary as the present state.

GEOGRAPHIC NOTES

New Hampshire is divided into 10 counties. The 259 county subdivisions in the state include 222 towns, which are functioning governmental units, and 13 incorporated places, which are independent of any county subdivision and therefore are treated by the Census Bureau as equivalent to county subdivisions. There also are 24 nonfunctioning legal entities, legally described as grants (8), locations (4), purchases (6), and townships (6). The Census Bureau identifies one area in Rockingham County in the territorial sea that is not within a county subdivision; this area is not assigned to any county subdivision and is not counted in the number of county subdivisions.

There are 13 incorporated places and 83 CDPs in New Hampshire. Incorporated places in the state are legally described as cities, and all are independent of any county subdivision. The Census Bureau treats all CDPs as dependent within county subdivisions.

GEOGRAPHIC CHANGE NOTES

The Geographic Change Notes listed below document high-level geographic entities—American Indian areas, Alaska Native areas, and Hawaiian home lands; counties and their equivalents; county subdivisions; and places—that are different from the information reported in Census 2000. The notes identify geographic entities whose name, legal description, and/or boundary have changed, entities that no longer exist, newly established entities (both legal and statistical), and changes in geographic relationships, such as places that exist in one county and have expanded into or withdrawn from another county (the notes do not identify the other county(ies) in which the entity exists; this can be determined from Table 9 of this publication), places that have been removed from comparable 2000 county subdivisions, and places that have become independent of or dependent within one or more county subdivisions. The changes are reported by and within county; counties without changes are not shown in the listing. Changes to American Indian areas, Alaska Native areas, and Hawaiian home lands appear after the list of counties; areas with no changes are not shown. A few of the reported changes in name, legal status, or legal relationship may be incorrect; if so, the correct version is shown in any Correction Notes section above. Some changes are the result of legal actions that took place prior to Census 2000 but were not reported in that census.

For the 2010 Census, the notes reflect any boundary change that affects a geographic entity, regardless of whether it is the result of legal action, redefinition of a statistical entity, correction of a previous drafting error, or new erroneous information. Between Census 2000 and the 2010 Census, the Census Bureau invested in improving the coordinate accuracy of its geographic database. As a result, the geographic positions of boundaries may be different between the two censuses even though little or no change actually occurred to the boundaries. In compiling the Geographic Change Notes, the Census Bureau inspected the many corrections to determine if a change actually affected significant land area or population. For example, the county-level text “all MCDs [minor civil divisions] revised” may reflect a legal redistricting of all county subdivisions in the county, a major or minor relocation of county subdivision boundaries due to more accurate mapping or more accurate boundary information, or a combination of these that, in one way or another, affect every county subdivision in a county. Boundary corrections that resulted in incorporated places gaining or losing territory are shown as annexations or detachments even if no legal action occurred between 2000 and 2010. Most places shown with a detachment resulted from such corrections. In states whose legal entities rarely undergo a legal boundary change, such as the New England states, most of the entities reported to have annexed, detached, exchanged, gained, or lost territory did so as the result of mapping changes, not legal actions. The extent and location of the boundary changes affecting any particular entity can be determined by comparing the TIGER/Line® Shapefiles, Cartographic Boundary Files, or a comparable set of maps for the 2000 and 2010 censuses.

Counties, County Subdivisions, and Places

Belknap County—*Name Changes*: Tilton Northfield CDP name changed from Tilton-Northfield (removing hyphen); *New CDPs*: Alton, Belmont, and New Hampton.

Carroll County—*New CDPs*: Bartlett, Center Ossipee, Center Sandwich, Melvin Village, Sanbornville, Suissevale, and Union.

Cheshire County—*New CDPs*: North Walpole, Troy, and Walpole.

Coos County—*MCD Changes*: Milan town gained area from Success township; *New CDPs*: Colebrook and West Stewartstown.

Grafton County—*New CDPs*: Ashland, Bethlehem, Canaan, Lincoln, Mountain Lakes, and North Woodstock.

Hillsborough County—*MCD Changes*: Greenfield town gained area from Lyndeborough town; Sharon town gained area from Temple town; *New CDPs*: Amherst, Bennington, Goffstown, and Hancock.

Merrimack County—*Name Changes*: Tilton Northfield CDP name changed from Tilton-Northfield (removing hyphen); *New CDPs*: Blodgett Landing, Bradford, Loudon, New London, and Warner; *CDP Changes*: Suncook CDP gained area.

Rockingham County—*New CDPs*: Hampton Beach, Newfields, and Seabrook Beach; *CDP Changes*: Derry CDP gained area.

Strafford County—*New CDPs*: Milton and Milton Mills.

Sullivan County—*New CDPs*: Plainfield; *CDP Changes*: Newport CDP gained area.

Crosswalk of Urban Areas and Places: 2010

Urban Area	Place Within Urban Area
URBANIZED AREA	
Boston, MA--NH--RI Urbanized Area (part)	Raymond CDP (part) Seabrook Beach CDP
Dover--Rochester, NH--ME Urbanized Area (part)	Dover city (part) Durham CDP (part) Milton CDP (part) Rochester city (part) Somersworth city (part)
Manchester, NH Urbanized Area	Goffstown CDP (part) Hooksett CDP (part) Manchester city (part) Pinardville CDP South Hooksett CDP Suncook CDP (part)
Nashua, NH--MA Urbanized Area (part)	Amherst CDP (part) Derry CDP (part) East Merrimack CDP (part) Hudson CDP Londonderry CDP Milford CDP Nashua city (part) Wilton CDP (part)
Portsmouth, NH--ME Urbanized Area (part)	Exeter CDP (part) Hampton CDP Hampton Beach CDP (part) Newfields CDP (part) Newmarket CDP (part) Portsmouth city
URBAN CLUSTER	
Bellows Falls, VT--NH Urban Cluster (part)	North Walpole CDP (part) Walpole CDP (part)
Berlin, NH Urban Cluster	Berlin city (part) Gorham CDP (part)
Charlestown, NH Urban Cluster	Charlestown CDP (part)
Claremont, NH Urban Cluster	Claremont city (part)
Concord, NH Urban Cluster	Concord city (part)
Epping, NH Urban Cluster	Epping CDP (part)
Farmington, NH Urban Cluster	Farmington CDP (part)
Franklin, NH Urban Cluster	Franklin city (part) Tilton Northfield CDP (part)
Hillsborough, NH Urban Cluster	Hillsborough CDP (part)
Jaffrey, NH Urban Cluster	Jaffrey CDP (part)
Keene, NH Urban Cluster	Keene city (part) Marlborough CDP (part)
Laconia, NH Urban Cluster	Laconia city (part)
Lebanon--Hanover, NH--VT Urban Cluster (part)	Enfield CDP (part) Hanover CDP (part) Lebanon city (part)
Littleton, NH Urban Cluster	Littleton CDP (part)
Newport, NH Urban Cluster	Newport CDP (part)
North Conway, NH Urban Cluster	Conway CDP (part) North Conway CDP (part)
Peterborough, NH Urban Cluster	Peterborough CDP (part)
Plymouth, NH Urban Cluster	Plymouth CDP (part)

Table 1.

Population: Earliest Census to 2010; and Housing Units: 1950 to 2010

[For information concerning historical counts and geographic change, see "User Notes." For information on confidentiality, nonsampling error, and definitions, see Appendixes]

State Urban and Rural	State total				Urban			Rural			Percent of total	
	Number	Change from preceding census		Number of places of 2,500 or more	Number	Change from preceding census		Number	Change from preceding census		Urban	Rural
		Number	Percent			Number	Percent		Number	Percent		
POPULATION												
Current urban definition:												
2010 (Apr. 1)	1,316,470	80,684	6.5	37	793,872	61,537	8.4	522,598	19,147	3.8	60.3	39.7
2000 (Apr. 1)	1,235,786	126,534	11.4	36	732,335	97,527	15.4	503,451	29,007	6.1	59.3	40.7
1990 (Apr. 1)	1,109,252	(X)	(X)	36	634,808	(X)	(X)	474,444	(X)	(X)	57.2	42.8
1950–90 urban definition:												
1990 (Apr. 1)	1,109,252	188,642	20.5	36	565,670	85,345	17.8	543,582	103,297	23.5	51.0	49.0
1980 (Apr. 1)	920,610	182,929	24.8	29	480,325	64,285	15.5	440,285	118,644	36.9	52.2	47.8
1970 (Apr. 1)	737,681	130,760	21.5	25	416,040	62,274	17.6	321,641	68,486	27.1	56.4	43.6
1960 (Apr. 1)	606,921	73,679	13.8	24	353,766	46,960	15.3	253,155	26,719	11.8	58.3	41.7
1950 (Apr. 1)	533,242	(X)	(X)	21	306,806	(X)	(X)	226,436	(X)	(X)	57.5	42.5
Pre-1950 urban definition:												
1960 (Apr. 1)	606,921	73,679	13.8	23	362,859	50,581	16.2	244,062	23,098	10.5	59.8	40.2
1950 (Apr. 1)	533,242	41,718	8.5	20	312,278	29,053	10.3	220,964	12,665	6.1	58.6	41.4
1940 (Apr. 1)	491,524	26,231	5.6	18	283,225	10,146	3.7	208,299	16,085	8.4	57.6	42.4
1930 (Apr. 1)	465,293	22,210	5.0	18	273,079	22,641	9.0	192,214	-431	-0.2	58.7	41.3
1920 (Jan. 1)	443,083	12,511	2.9	17	250,438	27,286	12.2	192,645	-14,775	-7.1	56.5	43.5
1910 (Apr. 15)	430,572	18,984	4.6	16	223,152	30,912	16.1	207,420	-11,928	-5.4	51.8	48.2
1900 (June 1)	411,588	35,058	9.3	15	192,240	44,327	30.0	219,348	-9,269	-4.1	46.7	53.3
1890 (June 1)	376,530	29,539	8.5	13	147,913	43,808	42.1	228,617	-14,269	-5.9	39.3	60.7
1880 (June 1)	346,991	28,691	9.0	9	104,105	20,649	24.7	242,886	8,042	3.4	30.0	70.0
1870 (June 1)	318,300	-7,773	-2.4	9	83,456	11,418	15.8	234,844	-19,191	-7.6	26.2	73.8
1860 (June 1)	326,073	8,097	2.5	8	72,038	17,711	32.6	254,035	-9,614	-3.6	22.1	77.9
1850 (June 1)	317,976	33,402	11.7	7	54,327	25,796	90.4	263,649	7,606	3.0	17.1	82.9
1840 (June 1)	284,574	15,246	5.7	5	28,531	15,056	111.7	256,043	190	0.1	10.0	90.0
1830 (June 1)	269,328	25,167	10.3	2	13,475	6,148	83.9	255,853	19,019	8.0	5.0	95.0
1820 (Aug. 7)	244,161	29,701	13.8	1	7,327	393	5.7	236,834	29,308	14.1	3.0	97.0
1810 (Aug. 6)	214,460	30,602	16.6	1	6,934	1,595	29.9	207,526	29,007	16.2	3.2	96.8
1800 (Aug. 4)	183,858	41,973	29.6	1	5,339	619	13.1	178,519	41,354	30.1	2.9	97.1
1790 (Aug. 2)	141,885	(X)	(X)	1	4,720	(X)	(X)	137,165	(X)	(X)	3.3	96.7
HOUSING UNITS												
Current urban definition:												
2010 (Apr. 1)	614,754	67,730	12.4	(X)	343,920	39,962	13.1	270,834	27,768	11.4	55.9	44.1
2000 (Apr. 1)	547,024	43,120	8.6	(X)	303,958	35,527	13.2	243,066	7,593	3.2	55.6	44.4
1990 (Apr. 1)	503,904	(X)	(X)	(X)	268,431	(X)	(X)	235,473	(X)	(X)	53.3	46.7
1950–90 urban definition:												
1990 (Apr. 1)	503,904	117,523	30.4	(X)	238,714	55,818	30.5	265,190	61,705	30.3	47.4	52.6
1980 (Apr. 1)	386,381	105,419	37.5	(X)	182,896	45,721	33.3	203,485	59,698	41.5	47.3	52.7
1970 (Apr. 1)	280,962	56,522	25.2	(X)	137,175	23,807	21.0	143,787	32,715	29.5	48.8	51.2
1960 (Apr. 1)	224,440	33,877	17.8	(X)	113,368	19,485	20.8	111,072	14,392	14.9	50.5	49.5
1950 (Apr. 1)	190,563	(X)	(X)	(X)	93,883	(X)	(X)	96,680	(X)	(X)	49.3	50.7

Table 2.

Population, Housing Units, and Land Area by Urban and Rural and Size of Urban Area: 2010

[Areas classified by population size. For information on confidentiality, nonsampling error, and definitions, see Appendixes]

State Urban and Rural Size of Urban Area [Population]	Population		Housing units		Land area		Number of urban areas		
	Total	Percent distribution	Total	Percent distribution	In square miles	Percent distribution	Total	Entirely in state	Partly in state
New Hampshire	1,316,470	100.0	614,754	100.0	8,953	100.0	25	17	8
Urban	793,872	60.3	343,920	55.9	644	7.2	25	17	8
In urbanized area	623,168	47.3	265,821	43.2	519	5.8	5	1	4
1,000,000 or more	93,038	7.1	38,750	6.3	123	1.4	1	—	1
500,000 to 999,999	—	—	—	—	—	—	—	—	—
250,000 to 499,999	—	—	—	—	—	—	—	—	—
100,000 to 249,999	377,459	28.7	156,721	25.5	262	2.9	2	1	1
50,000 to 99,999	152,671	11.6	70,350	11.4	135	1.5	2	—	2
In urban cluster	170,704	13.0	78,099	12.7	125	1.4	20	16	4
25,000 to 49,999	62,014	4.7	26,849	4.4	49	0.6	2	1	1
10,000 to 24,999	52,305	4.0	25,210	4.1	29	0.3	3	3	—
5,000 to 9,999	20,738	1.6	9,729	1.6	13	0.2	4	2	2
2,500 to 4,999	35,647	2.7	16,311	2.7	33	0.4	11	10	1
Cumulative summary:									
Urban area of—									
1,000,000 or more	93,038	7.1	38,750	6.3	123	1.4	1	—	1
500,000 or more	93,038	7.1	38,750	6.3	123	1.4	1	—	1
250,000 or more	93,038	7.1	38,750	6.3	123	1.4	1	—	1
100,000 or more	470,497	35.7	195,471	31.8	384	4.3	3	1	2
50,000 or more	623,168	47.3	265,821	43.2	519	5.8	5	1	4
25,000 or more	685,182	52.1	292,670	47.6	568	6.4	7	2	5
10,000 or more	737,487	56.0	317,880	51.7	598	6.7	10	5	5
5,000 or more	758,225	57.6	327,609	53.3	611	6.8	14	7	7
2,500 or more	793,872	60.3	343,920	55.9	644	7.2	25	17	8
Rural	522,598	39.7	270,834	44.1	8,309	92.8	(X)	(X)	(X)

This page is intentionally blank.

Table 3.

Population by Urban and Rural and Size of Place: 2010

[Places classified by population size. For information on confidentiality, nonsampling error, and definitions, see Appendixes]

State Size of Place [Population]	Total			Urban								Not in place
	Population	Number of places	Percent of total population	Total	In place							
					All urban places (entirely or partly urban)		Entirely urban places		Partly urban places			
					Population	Number of places	Population	Number of places	Population	Number of places		
New Hampshire	1,316,470	96	100.0	793,872	546,433	52	68,833	8	477,600	44	247,439	
In place	625,697	96	47.5	546,433	546,433	52	68,833	8	477,600	44	(X)	
Not in place	690,773	(X)	52.5	247,439	(X)	(X)	(X)	(X)	(X)	(X)	247,439	
In place of—												
1,000,000 or more	—	—	—	—	—	—	—	—	—	—	(X)	
500,000 to 999,999	—	—	—	—	—	—	—	—	—	—	(X)	
250,000 to 499,999	—	—	—	—	—	—	—	—	—	—	(X)	
100,000 to 249,999	109,565	1	8.3	109,032	109,032	1	—	—	109,032	1	(X)	
50,000 to 99,999	86,494	1	6.6	85,748	85,748	1	—	—	85,748	1	(X)	
25,000 to 49,999	102,434	3	7.8	92,082	92,082	3	—	—	92,082	3	(X)	
10,000 to 24,999	151,859	10	11.5	138,047	138,047	10	31,816	2	106,231	8	(X)	
5,000 to 9,999	68,276	9	5.2	65,755	65,755	9	31,245	4	34,510	5	(X)	
2,500 to 4,999	48,470	13	3.7	38,786	38,786	12	4,780	1	34,006	11	(X)	
2,000 to 2,499	4,624	2	0.4	4,472	4,472	2	—	—	4,472	2	(X)	
1,500 to 1,999	20,355	12	1.6	5,988	5,988	5	—	—	5,988	5	(X)	
1,000 to 1,499	19,683	16	1.5	2,893	2,893	3	—	—	2,893	3	(X)	
500 to 999	9,231	13	0.7	3,376	3,376	5	992	1	2,384	4	(X)	
200 to 499	4,482	14	0.3	254	254	1	—	—	254	1	(X)	
Less than 200	224	2	—	—	—	—	—	—	—	—	(X)	
Cumulative summary:												
In place of—												
1,000,000 or more	—	—	—	—	—	—	—	—	—	—	(X)	
500,000 or more	—	—	—	—	—	—	—	—	—	—	(X)	
250,000 or more	—	—	—	—	—	—	—	—	—	—	(X)	
100,000 or more	109,565	1	8.3	109,032	109,032	1	—	—	109,032	1	(X)	
50,000 or more	196,059	2	14.9	194,780	194,780	2	—	—	194,780	2	(X)	
25,000 or more	298,493	5	22.7	286,862	286,862	5	—	—	286,862	5	(X)	
10,000 or more	450,352	15	34.2	424,909	424,909	15	31,816	2	393,093	13	(X)	
5,000 or more	518,628	24	39.4	490,664	490,664	24	63,061	6	427,603	18	(X)	
2,500 or more	567,098	37	43.1	529,450	529,450	36	67,841	7	461,609	29	(X)	
2,000 or more	571,722	39	43.4	533,922	533,922	38	67,841	7	466,081	31	(X)	
1,500 or more	592,077	51	45.0	539,910	539,910	43	67,841	7	472,069	36	(X)	
1,000 or more	611,760	67	46.5	542,803	542,803	46	67,841	7	474,962	39	(X)	
500 or more	620,991	80	47.2	546,179	546,179	51	68,833	8	477,346	43	(X)	
200 or more	625,473	94	47.5	546,433	546,433	52	68,833	8	477,600	44	(X)	

Table 3.

Population by Urban and Rural and Size of Place: 2010—Con.

[Places classified by population size. For information on confidentiality, nonsampling error, and definitions, see Appendixes]

Total	Rural						Not in place	State Size of Place [Population]
	In place							
	All rural places (entirely or partly rural)		Entirely rural places		Partly rural places			
Population	Number of places	Population	Number of places	Population	Number of places			
522,598	79,264	88	40,870	44	38,394	44	443,334	New Hampshire
79,264	79,264	88	40,870	44	38,394	44	(X)	In place
443,334	(X)	(X)	(X)	(X)	(X)	(X)	443,334	Not in place
—	—	—	—	—	—	—	(X)	In place of—
—	—	—	—	—	—	—	(X)	1,000,000 or more
—	—	—	—	—	—	—	(X)	500,000 to 999,999
—	—	—	—	—	—	—	(X)	250,000 to 499,999
533	533	1	—	—	533	1	(X)	100,000 to 249,999
746	746	1	—	—	746	1	(X)	50,000 to 99,999
10,352	10,352	3	—	—	10,352	3	(X)	25,000 to 49,999
13,812	13,812	8	—	—	13,812	8	(X)	10,000 to 24,999
2,521	2,521	5	—	—	2,521	5	(X)	5,000 to 9,999
9,684	9,684	12	2,838	1	6,846	11	(X)	2,500 to 4,999
152	152	2	—	—	152	2	(X)	2,000 to 2,499
14,367	14,367	12	11,735	7	2,632	5	(X)	1,500 to 1,999
16,790	16,790	16	16,274	13	516	3	(X)	1,000 to 1,499
5,855	5,855	12	5,618	8	237	4	(X)	500 to 999
4,228	4,228	14	4,181	13	47	1	(X)	200 to 499
224	224	2	224	2	—	—	(X)	Less than 200
—	—	—	—	—	—	—	(X)	Cumulative summary:
—	—	—	—	—	—	—	(X)	In place of—
—	—	—	—	—	—	—	(X)	1,000,000 or more
—	—	—	—	—	—	—	(X)	500,000 or more
—	—	—	—	—	—	—	(X)	250,000 or more
533	533	1	—	—	533	1	(X)	100,000 or more
1,279	1,279	2	—	—	1,279	2	(X)	50,000 or more
11,631	11,631	5	—	—	11,631	5	(X)	25,000 or more
25,443	25,443	13	—	—	25,443	13	(X)	10,000 or more
27,964	27,964	18	—	—	27,964	18	(X)	5,000 or more
37,648	37,648	30	2,838	1	34,810	29	(X)	2,500 or more
37,800	37,800	32	2,838	1	34,962	31	(X)	2,000 or more
52,167	52,167	44	14,573	8	37,594	36	(X)	1,500 or more
68,957	68,957	60	30,847	21	38,110	39	(X)	1,000 or more
74,812	74,812	72	36,465	29	38,347	43	(X)	500 or more
79,040	79,040	86	40,646	42	38,394	44	(X)	200 or more

Table 4.

Population and Housing Units: 1970 to 2010

[For information concerning historical counts and geographic change, see "User Notes." For information on confidentiality, nonsampling error, and definitions, see Appendixes]

State County/County Equivalent	Population					Housing units				
	2010	2000	1990	1980	1970	2010	2000	1990	1980	1970
New Hampshire	1,316,470	1,235,786	1,109,252	920,610	737,681	614,754	547,024	503,904	386,381	280,962
Belknap County	60,088	56,325	49,216	42,884	32,367	37,386	32,121	30,306	24,004	16,230
Carroll County	47,818	43,666	35,410	27,931	18,548	39,813	34,750	32,146	22,854	14,838
Cheshire County	77,117	73,825	70,121	62,116	52,364	34,773	31,876	30,350	25,368	20,202
Coos County	33,055	33,111	34,828	35,147	34,291	21,321	19,623	18,712	16,004	13,213
Grafton County	89,118	81,743	74,929	65,806	54,914	51,120	43,729	42,206	32,246	22,937
Hillsborough County	400,721	380,841	335,838	276,608	223,941	166,053	149,961	135,622	101,208	74,666
Merrimack County	146,445	136,225	120,240	98,302	80,925	63,541	56,244	50,870	39,636	29,250
Rockingham County	295,223	277,359	245,845	190,345	138,951	126,709	113,023	101,773	76,115	53,132
Strafford County	123,143	112,233	104,233	85,408	70,431	51,697	45,539	42,387	32,460	23,874
Sullivan County	43,742	40,458	38,592	36,063	30,949	22,341	20,158	19,532	16,486	12,620

Table 5.

Population, Housing Units, Land Area, and Density: 2010; and Percent Change: 1980 to 2010

[For information concerning historical counts and geographic change, see "User Notes." For information on confidentiality, nonsampling error, and definitions, see Appendixes]

State County/County Equivalent	Population	Housing units	Land area in square miles	Average per square mile of land		Percent change					
				Population density	Housing unit density	Population			Housing units		
						2000 to 2010	1990 to 2000	1980 to 1990	2000 to 2010	1990 to 2000	1980 to 1990
New Hampshire	1,316,470	614,754	8,952.65	147.0	68.7	6.5	11.4	20.5	12.4	8.6	30.4
Belknap County	60,088	37,386	400.23	150.1	93.4	6.7	14.4	14.8	16.4	6.0	26.3
Carroll County	47,818	39,813	931.06	51.4	42.8	9.5	23.3	26.8	14.6	8.1	40.7
Cheshire County	77,117	34,773	706.66	109.1	49.2	4.5	5.3	12.9	9.1	5.0	19.6
Coos County	33,055	21,321	1,794.69	18.4	11.9	-0.2	-4.9	-0.9	8.7	4.9	16.9
Grafton County	89,118	51,120	1,708.75	52.2	29.9	9.0	9.1	13.9	16.9	3.6	30.9
Hillsborough County	400,721	166,053	876.14	457.4	189.5	5.2	13.4	21.4	10.7	10.6	34.0
Merrimack County	146,445	63,541	934.12	156.8	68.0	7.5	13.3	22.3	13.0	10.6	28.3
Rockingham County	295,223	126,709	694.72	425.0	182.4	6.4	12.8	29.2	12.1	11.1	33.7
Strafford County	123,143	51,697	368.97	333.7	140.1	9.7	7.7	22.0	13.5	7.4	30.6
Sullivan County	43,742	22,341	537.31	81.4	41.6	8.1	4.8	7.0	10.8	3.2	18.5

Table 6.

Rank of Counties by Percent Change in Population: 2000 to 2010

[For information concerning historical counts and geographic change, see "User Notes." For information on confidentiality, nonsampling error, and definitions, see Appendixes]

County/County Equivalent	Population		Percent change	
	2010	2000	Rank	Percent
Strafford County	123,143	112,233	1	9.7
Carroll County	47,818	43,666	2	9.5
Grafton County	89,118	81,743	3	9.0
Sullivan County	43,742	40,458	4	8.1
Merrimack County	146,445	136,225	5	7.5
Belknap County	60,088	56,325	6	6.7
Rockingham County	295,223	277,359	7	6.4
Hillsborough County	400,721	380,841	8	5.2
Cheshire County	77,117	73,825	9	4.5
Coos County	33,055	33,111	10	-0.2

Table 7.

Population by Urban and Rural: 2010

[For information on confidentiality, nonsampling error, and definitions, see Appendixes]

State County/County Equivalent	Total population	Urban			Rural			Percent of total population	
		Total	In urbanized area	In urban cluster	Total	In place	Not in place	Urban	Rural
New Hampshire	1,316,470	793,872	623,168	170,704	522,598	79,264	443,334	60.3	39.7
Belknap County	60,088	20,262	–	20,262	39,826	6,070	33,756	33.7	66.3
Carroll County	47,818	4,685	–	4,685	43,133	6,168	36,965	9.8	90.2
Cheshire County	77,117	26,979	–	26,979	50,138	9,136	41,002	35.0	65.0
Coos County	33,055	11,159	–	11,159	21,896	6,928	14,968	33.8	66.2
Grafton County	89,118	27,880	–	27,880	61,238	14,403	46,835	31.3	68.7
Hillsborough County	400,721	315,803	308,754	7,049	84,918	5,819	79,099	78.8	21.2
Merrimack County	146,445	66,467	15,900	50,567	79,978	14,789	65,189	45.4	54.6
Rockingham County	295,223	221,718	218,228	3,490	73,505	2,200	71,305	75.1	24.9
Strafford County	123,143	83,243	80,286	2,957	39,900	7,963	31,937	67.6	32.4
Sullivan County	43,742	15,676	–	15,676	28,066	5,788	22,278	35.8	64.2

Table 8.

Population and Housing Units: 1990 to 2010; and Area Measurements and Density: 2010

[For information concerning historical counts and geographic change, see "User Notes." For information on confidentiality, nonsampling error, and definitions, see Appendixes]

State County/County Equivalent County Subdivision Place	Population			Housing units			Area measurements in square miles		Average per square mile of land	
	2010	2000	1990	2010	2000	1990	Total area	Land area	Population density	Housing unit density
New Hampshire	1,316,470	1,235,786	1,109,252	614,754	547,024	503,904	9,349.16	8,952.65	147.0	68.7
Belknap County	60,088	56,325	49,216	37,386	32,121	30,306	468.58	400.23	150.1	93.4
Alton town	5,250	4,502	3,286	4,281	3,522	3,267	82.20	62.89	83.5	68.1
Alton CDP	501	(X)	(X)	270	(X)	(X)	0.49	0.46	1,089.1	587.0
Barnstead town	4,593	3,886	3,100	2,319	1,994	1,861	44.01	42.00	109.4	55.2
Belmont town	7,356	6,716	5,796	3,615	3,113	2,869	32.33	30.46	241.5	118.7
Belmont CDP	1,301	(X)	(X)	570	(X)	(X)	1.27	1.26	1,032.5	452.4
Center Harbor town	1,096	996	996	795	653	649	16.53	13.36	82.0	59.5
Gilford town	7,126	6,803	5,867	5,111	4,312	4,397	53.70	38.88	183.3	131.5
Gilmanton town	3,777	3,060	2,609	2,118	1,848	1,744	59.00	57.24	66.0	37.0
Laconia city	15,951	16,411	15,743	9,879	8,554	8,201	26.58	20.06	795.2	492.5
Meredith town	6,241	5,943	4,837	4,728	4,191	3,720	54.21	39.91	156.4	118.5
Meredith CDP	1,718	1,739	1,654	943	832	837	1.84	1.47	1,168.7	641.5
New Hampton town	2,165	1,950	1,606	1,083	944	855	38.28	36.69	59.0	29.5
New Hampton CDP	351	(X)	(X)	128	(X)	(X)	1.29	1.27	276.4	100.8
Sanbornton town	2,966	2,581	2,136	1,612	1,359	1,131	49.76	47.61	62.3	33.9
Tilton town	3,567	3,477	3,240	1,845	1,631	1,612	11.99	11.13	320.5	165.8
Tilton Northfield CDP (part)	1,619	1,645	1,557	697	654	678	1.85	1.78	909.6	391.6
Carroll County	47,818	43,666	35,410	39,813	34,750	32,146	992.43	931.06	51.4	42.8
Albany town	735	654	536	560	506	451	75.15	74.58	9.9	7.5
Bartlett town	2,788	2,705	2,290	4,115	3,589	3,407	75.31	74.88	37.2	55.0
Bartlett CDP	373	(X)	(X)	229	(X)	(X)	1.51	1.49	250.3	153.7
Brookfield town	712	604	518	338	280	274	23.24	22.83	31.2	14.8
Chatham town	337	260	268	270	253	211	57.35	56.80	5.9	4.8
Conway town	10,115	8,604	7,940	6,921	5,927	5,499	71.66	69.40	145.7	99.7
Conway CDP	1,823	1,692	1,604	1,062	974	911	3.05	2.84	641.9	373.9
North Conway CDP	2,349	2,069	2,032	1,804	1,602	1,550	4.33	4.28	548.8	421.5
Eaton town	393	375	362	291	239	240	25.59	24.29	16.2	12.0
Effingham town	1,465	1,273	941	963	791	682	39.60	38.42	38.1	25.1
Freedom town	1,489	1,303	835	1,580	1,406	1,359	38.12	34.98	42.6	45.2
Hale's location	120	58	-	102	65	2	2.48	2.48	48.4	41.1
Hart's Location town	41	37	36	54	50	64	18.59	18.48	2.2	2.9
Jackson town	816	835	678	1,009	910	865	66.95	66.91	12.2	15.1
Madison town	2,502	1,984	1,704	1,877	1,589	1,422	40.93	38.54	64.9	48.7
Moultonborough town	4,044	4,484	2,956	4,940	4,523	3,850	74.61	59.47	68.0	83.1
Suissevale CDP	249	(X)	(X)	546	(X)	(X)	1.18	1.17	212.8	466.7
Ossipee town	4,345	4,211	3,309	3,057	2,742	2,617	75.57	70.76	61.4	43.2
Center Ossipee CDP	561	(X)	(X)	256	(X)	(X)	0.95	0.95	590.5	269.5
Sandwich town	1,326	1,286	1,066	1,057	965	864	93.47	90.23	14.7	11.7
Center Sandwich CDP	123	(X)	(X)	89	(X)	(X)	0.59	0.59	208.5	150.8
Tamworth town	2,856	2,510	2,165	1,969	1,662	1,523	60.68	59.71	47.8	33.0
Tuftonboro town	2,387	2,148	1,842	2,435	2,019	2,027	49.98	40.95	58.3	59.5
Melvin Village CDP	241	(X)	(X)	274	(X)	(X)	0.90	0.90	267.8	304.4
Wakefield town	5,078	4,252	3,057	3,832	3,331	3,158	44.70	39.46	128.7	97.1
Sanbornville CDP	1,056	(X)	(X)	482	(X)	(X)	1.59	1.59	664.2	303.1
Union CDP	204	(X)	(X)	93	(X)	(X)	0.32	0.32	637.5	290.6
Wolfeboro town	6,269	6,083	4,807	4,443	3,903	3,631	58.44	47.87	131.0	92.8
Wolfeboro CDP	2,838	2,979	2,783	1,858	1,722	1,758	7.13	6.80	417.4	273.2
Cheshire County	77,117	73,825	70,121	34,773	31,876	30,350	729.10	706.66	109.1	49.2
Alstead town	1,937	1,944	1,721	991	941	843	39.35	38.78	49.9	25.6
Chesterfield town	3,604	3,542	3,112	1,802	1,632	1,527	47.56	45.55	79.1	39.6
Dublin town	1,597	1,476	1,474	785	686	651	29.17	28.07	56.9	28.0
Fitzwilliam town	2,396	2,141	2,011	1,257	1,074	1,031	36.02	34.61	69.2	36.3
Gilsum town	813	777	745	378	343	320	16.67	16.65	48.8	22.7
Harrisville town	961	1,075	981	695	698	588	20.15	18.58	51.7	37.4
Hinsdale town	4,046	4,082	3,936	1,827	1,714	1,655	22.71	20.56	196.8	88.9
Hinsdale CDP	1,548	1,713	1,718	733	746	747	2.50	2.36	655.9	310.6
Jaffrey town	5,457	5,476	5,361	2,547	2,352	2,426	40.05	38.31	142.4	66.5
Jaffrey CDP	2,757	2,802	2,558	1,329	1,217	1,169	2.63	2.54	1,085.4	523.2
Keene city	23,409	22,563	22,430	9,719	9,295	8,841	37.50	37.25	628.4	260.9
Marlborough town	2,063	2,009	1,924	946	896	856	20.64	20.41	101.1	46.3
Marlborough CDP	1,094	1,089	1,211	492	494	539	1.69	1.69	647.3	291.1
Marlow town	742	747	650	408	396	364	26.42	25.95	28.6	15.7
Nelson town	729	634	535	460	400	379	23.25	21.88	33.3	21.0
Richmond town	1,155	1,077	877	492	432	398	37.77	37.58	30.7	13.1
Rindge town	6,014	5,451	4,941	2,224	1,863	1,781	39.93	37.17	161.8	59.8

Table 8.

Population and Housing Units: 1990 to 2010; and Area Measurements and Density: 2010—Con.

[For information concerning historical counts and geographic change, see "User Notes." For information on confidentiality, nonsampling error, and definitions, see Appendixes]

State County/County Equivalent County Subdivision Place	Population			Housing units			Area measurements in square miles		Average per square mile of land	
	2010	2000	1990	2010	2000	1990	Total area	Land area	Population density	Housing unit density
New Hampshire—Con.										
Cheshire County—Con.										
Roxbury town	229	237	248	101	90	95	12.19	11.90	19.2	8.5
Stoddard town	1,232	928	622	1,044	939	890	53.00	50.89	24.2	20.5
Sullivan town	677	746	706	309	299	283	18.72	18.53	36.5	16.7
Surry town	732	673	667	324	282	262	15.95	15.63	46.8	20.7
Swanzy town	7,230	6,800	6,236	3,205	2,818	2,582	45.39	45.01	160.6	71.2
West Swanzy CDP	1,308	1,118	1,055	617	506	456	2.55	2.53	517.0	243.9
Troy town	2,145	1,962	2,097	932	775	867	17.58	17.42	123.1	53.5
Troy CDP	1,221	(X)	(X)	528	(X)	(X)	1.28	1.28	953.9	412.5
Walpole town	3,734	3,594	3,210	1,715	1,592	1,465	36.70	35.18	106.1	48.7
North Walpole CDP	828	(X)	(X)	387	(X)	(X)	0.69	0.68	1,217.6	569.1
Walpole CDP	605	(X)	(X)	346	(X)	(X)	1.23	1.22	495.9	283.6
Westmoreland town	1,874	1,747	1,596	680	618	573	36.88	35.79	52.4	19.0
Winchester town	4,341	4,144	4,038	1,932	1,741	1,673	55.51	54.96	79.0	35.2
Winchester CDP	1,733	1,832	1,735	738	727	691	3.01	3.01	575.7	245.2
Coos County	33,055	33,111	34,828	21,321	19,623	18,712	1,829.73	1,794.69	18.4	11.9
Atkinson and Gilmanton										
Academy grant	—	12	—	4	15	—	19.54	19.43	—	0.2
Beans grant	—	—	—	—	—	—	9.69	9.69	—	—
Beans purchase	—	4	—	—	3	—	65.25	65.14	—	—
Berlin city	10,051	10,331	11,824	4,910	5,111	5,416	62.46	61.62	163.1	79.7
Cambridge township	8	10	—	40	39	43	51.11	50.40	0.2	0.8
Carroll town	763	663	528	898	740	611	50.20	50.17	15.2	17.9
Chandlers purchase	—	—	—	—	—	—	2.13	2.13	—	—
Clarksville town	265	294	232	439	307	237	62.26	60.12	4.4	7.3
Colebrook town	2,301	2,321	2,444	1,429	1,312	1,168	40.90	40.69	56.5	35.1
Colebrook CDP	1,394	(X)	(X)	788	(X)	(X)	2.71	2.63	530.0	299.6
Columbia town	757	750	661	518	449	376	60.60	60.27	12.6	8.6
Crawfords purchase	—	—	—	—	—	—	8.19	8.19	—	—
Cutts grant	—	—	—	—	—	—	11.44	11.44	—	—
Dalton town	979	927	827	577	520	475	28.04	27.48	35.6	21.0
Dixs grant	1	—	—	15	16	10	20.19	20.14	—	0.7
Dixville township	12	75	50	33	36	36	49.00	48.82	0.2	0.7
Dummer town	304	309	327	294	252	214	49.44	48.24	6.3	6.1
Errol town	291	298	292	507	447	369	69.75	60.63	4.8	8.4
Erving's location	—	1	—	—	1	—	3.67	3.67	—	—
Gorham town	2,848	2,895	3,173	1,487	1,482	1,426	32.31	31.82	89.5	46.7
Gorham CDP	1,600	1,773	1,910	852	912	869	0.91	0.84	1,904.8	1,014.3
Greens grant	1	—	—	5	—	—	3.67	3.66	0.3	1.4
Hadleys purchase	—	—	—	—	—	—	7.41	7.41	—	—
Jefferson town	1,107	1,006	965	676	582	543	50.43	50.10	22.1	13.5
Kilkenny township	—	—	—	2	—	—	25.64	25.62	—	0.1
Lancaster town	3,507	3,280	3,522	1,687	1,501	1,513	50.72	49.85	70.4	33.8
Lancaster CDP	1,725	1,695	1,859	816	803	833	2.05	2.01	858.2	406.0
Low and Burbanks grant	—	—	—	—	—	—	26.15	26.14	—	—
Martins location	—	—	—	1	—	—	3.76	3.73	—	0.3
Milan town	1,337	1,331	1,295	809	756	680	64.56	63.81	21.0	12.7
Millsfield township	23	22	21	61	62	53	45.17	44.77	0.5	1.4
Northumberland town	2,288	2,438	2,492	1,121	1,112	1,060	36.49	35.71	64.1	31.4
Groveton CDP	1,118	1,197	1,255	550	558	564	2.15	2.06	542.7	267.0
Odell township	4	5	—	73	73	78	45.17	44.47	0.1	1.6
Pinkhams grant	9	—	11	—	1	3	3.78	3.77	2.4	—
Pittsburg town	869	867	901	1,748	1,281	1,224	291.18	281.37	3.1	6.2
Randolph town	310	339	371	312	298	275	47.15	47.09	6.6	6.6
Sargents purchase	3	—	—	1	—	—	25.85	25.84	0.1	—
Second College grant	—	—	—	10	8	8	41.65	41.15	—	0.2
Shelburne town	372	379	437	217	197	179	48.80	47.95	7.8	4.5
Stark town	556	516	518	445	384	368	59.59	58.69	9.5	7.6
Stewartstown town	1,004	1,012	1,048	920	760	628	46.79	46.21	21.7	19.9
West Stewartstown CDP	386	(X)	(X)	140	(X)	(X)	0.64	0.61	632.8	229.5
Stratford town	746	942	927	574	540	479	80.00	79.48	9.4	7.2
Success township	—	2	—	63	71	11	57.01	56.49	—	1.1
Thompson and Meserves purchase	—	—	—	—	—	—	18.51	18.51	—	—
Wentworth location	33	44	53	106	109	118	19.43	18.52	1.8	5.7
Whitefield town	2,306	2,038	1,909	1,339	1,158	1,111	34.66	34.22	67.4	39.1
Whitefield CDP	1,142	1,089	1,041	544	525	488	1.29	1.29	885.3	421.7

Table 8.

Population and Housing Units: 1990 to 2010; and Area Measurements and Density: 2010—Con.

[For information concerning historical counts and geographic change, see "User Notes." For information on confidentiality, nonsampling error, and definitions, see Appendixes]

State County/County Equivalent County Subdivision Place	Population			Housing units			Area measurements in square miles		Average per square mile of land	
	2010	2000	1990	2010	2000	1990	Total area	Land area	Population density	Housing unit density
New Hampshire—Con.										
Strafford County—Con.										
Farmington town	6,786	5,774	5,739	2,832	2,337	2,260	37.54	37.22	182.3	76.1
Farmington CDP	3,885	3,468	3,567	1,645	1,440	1,443	6.38	6.38	608.9	257.8
Lee town	4,330	4,145	3,729	1,765	1,534	1,393	20.16	19.95	217.0	88.5
Madbury town	1,771	1,509	1,404	653	543	528	12.22	11.65	152.0	56.1
Middleton town	1,783	1,440	1,183	851	706	654	18.51	18.09	98.6	47.0
Milton town	4,598	3,910	3,691	2,181	1,815	1,767	34.34	33.12	138.8	65.9
Milton CDP	575	(X)	(X)	261	(X)	(X)	0.81	0.81	709.9	322.2
Milton Mills CDP	299	(X)	(X)	127	(X)	(X)	0.87	0.86	347.7	147.7
New Durham town	2,638	2,220	1,974	1,523	1,309	1,231	44.15	41.51	63.6	36.7
Rochester city	29,752	28,461	26,630	13,372	11,836	11,076	45.76	45.40	655.3	294.5
Rollinsford town	2,527	2,648	2,645	1,099	1,060	1,040	7.59	7.29	346.6	150.8
Somersworth city	11,766	11,477	11,249	5,199	4,841	4,719	9.99	9.79	1,201.8	531.1
Strafford town	3,991	3,626	2,965	1,784	1,564	1,264	51.38	49.16	81.2	36.3
Sullivan County										
Acworth town	891	836	776	556	512	507	39.13	38.88	22.9	14.3
Charlestown town	5,114	4,749	4,630	2,263	2,067	2,051	38.05	35.80	142.8	63.2
Charlestown CDP	1,152	1,145	1,173	503	503	543	0.86	0.81	1,422.2	621.0
Claremont city	13,355	13,151	13,902	6,293	6,074	6,228	44.09	43.12	309.7	145.9
Cornish town	1,640	1,661	1,659	747	697	689	42.83	42.11	38.9	17.7
Croydon town	764	661	627	396	354	309	37.45	36.68	20.8	10.8
Goshen town	810	741	742	444	389	394	22.58	22.48	36.0	19.8
Grantham town	2,985	2,167	1,247	1,773	1,513	1,289	28.05	27.17	109.9	65.3
Langdon town	688	586	580	306	269	243	16.33	16.25	42.3	18.8
Lempster town	1,154	971	947	679	577	554	32.77	32.35	35.7	21.0
Newport town	6,507	6,269	6,110	2,938	2,633	2,675	43.64	43.57	149.3	67.4
Newport CDP	4,769	4,008	3,772	2,184	1,676	1,725	13.26	13.26	359.7	164.7
Plainfield town	2,364	2,241	2,056	984	877	784	52.92	52.17	45.3	18.9
Plainfield CDP	205	(X)	(X)	91	(X)	(X)	0.58	0.58	353.4	156.9
Springfield town	1,311	945	788	702	534	481	44.13	43.25	30.3	16.2
Sunapee town	3,365	3,055	2,559	2,431	2,143	1,904	25.21	21.13	159.3	115.0
Unity town	1,671	1,530	1,341	736	594	558	37.18	36.92	45.3	19.9
Washington town	1,123	895	628	1,093	925	866	47.63	45.45	24.7	24.0

Table 9.

Population and Housing Units: 1990 to 2010; and Area Measurements and Density: 2010

[For information concerning historical counts and geographic change, see "User Notes." For information on confidentiality, nonsampling error, and definitions, see Appendixes]

State Place and [in Selected States] County Subdivision	Population				Percent change 2000 to 2010	Housing units			Percent change 2000 to 2010
	2010	2000	1990			2010	2000	1990	
New Hampshire	1,316,470	1,235,786	1,109,252	6.5	614,754	547,024	503,904	12.4	
Acworth town, Sullivan County	891	836	776	6.6	556	512	507	8.6	
Albany town, Carroll County	735	654	536	12.4	560	506	451	10.7	
Alexandria town, Grafton County	1,613	1,329	1,190	21.4	967	783	721	23.5	
Allenstown town, Merrimack County	4,322	4,843	4,649	-10.8	1,881	1,962	1,868	-4.1	
Alstead town, Cheshire County	1,937	1,944	1,721	-0.4	991	941	843	5.3	
Alton CDP, Belknap County	501	(X)	(X)	(X)	270	(X)	(X)	(X)	
Alton town, Belknap County	5,250	4,502	3,286	16.6	4,281	3,522	3,267	21.6	
Amherst CDP, Hillsborough County	613	(X)	(X)	(X)	254	(X)	(X)	(X)	
Amherst town, Hillsborough County	11,201	10,769	9,068	4.0	4,280	3,752	3,179	14.1	
Andover town, Merrimack County	2,371	2,109	1,883	12.4	1,121	1,038	855	8.0	
Antrim CDP, Hillsborough County	1,397	1,389	1,325	0.6	607	541	549	12.2	
Antrim town, Hillsborough County	2,637	2,449	2,360	7.7	1,329	1,160	1,162	14.6	
Ashland CDP, Grafton County	1,244	(X)	(X)	(X)	685	(X)	(X)	(X)	
Ashland town, Grafton County	2,076	1,955	1,915	6.2	1,355	1,149	1,162	17.9	
Atkinson town, Rockingham County	6,751	6,178	5,188	9.3	2,788	2,431	1,885	14.7	
Atkinson and Gilman Academy grant, Coos County	-	12	-	-100.0	4	15	-	-73.3	
Auburn town, Rockingham County	4,953	4,682	4,085	5.8	1,814	1,622	1,354	11.8	
Barnstead town, Belknap County	4,593	3,886	3,100	18.2	2,319	1,994	1,861	16.3	
Barrington town, Strafford County	8,576	7,475	6,164	14.7	3,661	3,147	2,640	16.3	
Bartlett CDP, Carroll County	373	(X)	(X)	(X)	229	(X)	(X)	(X)	
Bartlett town, Carroll County	2,788	2,705	2,290	3.1	4,115	3,589	3,407	14.7	
Bath town, Grafton County	1,077	893	784	20.6	579	450	438	28.7	
Beans grant, Coos County	-	-	-	-	-	-	-	-	
Beans purchase, Coos County	-	4	-	-100.0	-	3	-	-100.0	
Bedford town, Hillsborough County	21,203	18,274	12,563	16.0	7,634	6,401	4,156	19.3	
Belmont CDP, Belknap County	1,301	(X)	(X)	(X)	570	(X)	(X)	(X)	
Belmont town, Belknap County	7,356	6,716	5,796	9.5	3,615	3,113	2,869	16.1	
Bennington CDP, Hillsborough County	381	(X)	(X)	(X)	154	(X)	(X)	(X)	
Bennington town, Hillsborough County	1,476	1,401	1,236	5.4	666	635	643	4.9	
Benton town, Grafton County	364	314	330	15.9	164	155	133	5.8	
Berlin city, Coos County	10,051	10,331	11,824	-2.7	4,910	5,111	5,416	-3.9	
Bethlehem CDP, Grafton County	972	(X)	(X)	(X)	531	(X)	(X)	(X)	
Bethlehem town, Grafton County	2,526	2,199	2,033	14.9	1,517	1,307	1,221	16.1	
Blodgett Landing CDP, Merrimack County	101	(X)	(X)	(X)	159	(X)	(X)	(X)	
Boscawen town, Merrimack County	3,965	3,672	3,586	8.0	1,453	1,295	1,221	12.2	
Bow town, Merrimack County	7,519	7,138	5,500	5.3	2,807	2,330	1,860	20.5	
Bradford CDP, Merrimack County	356	(X)	(X)	(X)	174	(X)	(X)	(X)	
Bradford town, Merrimack County	1,650	1,454	1,405	13.5	917	762	757	20.3	
Brentwood town, Rockingham County	4,486	3,197	2,590	40.3	1,350	920	778	46.7	
Bridgewater town, Grafton County	1,083	974	796	11.2	995	850	839	17.1	
Bristol CDP, Grafton County	1,688	1,670	1,483	1.1	1,027	928	945	10.7	
Bristol town, Grafton County	3,054	3,033	2,537	0.7	2,488	2,073	2,250	20.0	
Brookfield town, Carroll County	712	604	518	17.9	338	280	274	20.7	
Brookline town, Hillsborough County	4,991	4,181	2,410	19.4	1,700	1,384	881	22.8	
Cambridge township, Coos County	8	10	-	-20.0	40	39	43	2.6	
Campton town, Grafton County	3,333	2,719	2,377	22.6	2,208	1,759	1,627	25.5	
Canaan CDP, Grafton County	524	(X)	(X)	(X)	248	(X)	(X)	(X)	
Canaan town, Grafton County	3,909	3,319	3,045	17.8	1,930	1,588	1,435	21.5	
Candia town, Rockingham County	3,909	3,911	3,557	-0.1	1,494	1,384	1,192	7.9	
Canterbury town, Merrimack County	2,352	1,979	1,687	18.8	1,002	838	724	19.6	
Carroll town, Coos County	763	663	528	15.1	898	740	611	21.4	
Center Harbor town, Belknap County	1,096	996	996	10.0	795	653	649	21.7	
Center Ossipee CDP, Carroll County	561	(X)	(X)	(X)	256	(X)	(X)	(X)	
Center Sandwich CDP, Carroll County	123	(X)	(X)	(X)	89	(X)	(X)	(X)	
Chandler's purchase, Coos County	-	-	-	-	-	-	-	-	
Charlestown CDP, Sullivan County	1,152	1,145	1,173	0.6	503	503	543	-	
Charlestown town, Sullivan County	5,114	4,749	4,630	7.7	2,263	2,067	2,051	9.5	
Chatham town, Carroll County	337	260	268	29.6	270	253	211	6.7	
Chester town, Rockingham County	4,768	3,792	2,691	25.7	1,596	1,247	924	28.0	
Chesterfield town, Cheshire County	3,604	3,542	3,112	1.8	1,802	1,632	1,527	10.4	
Chichester town, Merrimack County	2,523	2,236	1,942	12.8	963	849	724	13.4	
Claremont city, Sullivan County	13,355	13,151	13,902	1.6	6,293	6,074	6,228	3.6	
Clarksville town, Coos County	265	294	232	-9.9	439	307	237	43.0	
Colebrook CDP, Coos County	1,394	(X)	(X)	(X)	788	(X)	(X)	(X)	
Colebrook town, Coos County	2,301	2,321	2,444	-0.9	1,429	1,312	1,168	8.9	
Columbia town, Coos County	757	750	661	0.9	518	449	376	15.4	
Concord city, Merrimack County	42,695	40,687	36,006	4.9	18,852	16,881	15,697	11.7	
Contoocook CDP, Merrimack County	1,444	1,444	1,334	-	638	614	550	3.9	
Conway CDP, Carroll County	1,823	1,692	1,604	7.7	1,062	974	911	9.0	
Conway town, Carroll County	10,115	8,604	7,940	17.6	6,921	5,927	5,499	16.8	

Table 9.

Population and Housing Units: 1990 to 2010; and Area Measurements and Density: 2010—Con.

[For information concerning historical counts and geographic change, see "User Notes." For information on confidentiality, nonsampling error, and definitions, see Appendixes]

Area measurements in square miles		Average per square mile of land		State Place and [in Selected States] County Subdivision
Total area	Land area	Population density	Housing unit density	
9,349.16	8,952.65	147.0	68.7	New Hampshire
39.13	38.88	22.9	14.3	Acworth town, Sullivan County
75.15	74.58	9.9	7.5	Albany town, Carroll County
43.15	42.95	37.6	22.5	Alexandria town, Grafton County
20.43	20.32	212.7	92.6	Allenstown town, Merrimack County
39.35	38.78	49.9	25.6	Alstead town, Cheshire County
0.49	0.46	1,089.1	587.0	Alton CDP, Belknap County
82.20	62.89	83.5	68.1	Alton town, Belknap County
0.73	0.73	839.7	347.9	Amherst CDP, Hillsborough County
34.71	34.19	327.6	125.2	Amherst town, Hillsborough County
41.43	40.54	58.5	27.7	Andover town, Merrimack County
4.52	4.51	309.8	134.6	Antrim CDP, Hillsborough County
36.50	35.67	73.9	37.3	Antrim town, Hillsborough County
1.29	1.26	987.3	543.7	Ashland CDP, Grafton County
11.52	10.99	188.9	123.3	Ashland town, Grafton County
11.31	11.15	605.5	250.0	Atkinson town, Rockingham County
19.54	19.43	—	0.2	Atkinson and Gilmanton Academy grant, Coos County
28.70	25.20	196.5	72.0	Auburn town, Rockingham County
44.01	42.00	109.4	55.2	Barnstead town, Belknap County
48.54	46.69	183.7	78.4	Barrington town, Strafford County
1.51	1.49	250.3	153.7	Bartlett CDP, Carroll County
75.31	74.88	37.2	55.0	Bartlett town, Carroll County
38.61	37.72	28.6	15.3	Bath town, Grafton County
9.69	9.69	—	—	Beans grant, Coos County
65.25	65.14	—	—	Beans purchase, Coos County
33.12	32.83	645.8	232.5	Bedford town, Hillsborough County
1.27	1.26	1,032.5	452.4	Belmont CDP, Belknap County
32.33	30.46	241.5	118.7	Belmont town, Belknap County
0.43	0.43	886.0	358.1	Bennington CDP, Hillsborough County
11.35	11.09	133.1	60.1	Bennington town, Hillsborough County
48.36	48.13	7.6	3.4	Benton town, Grafton County
62.46	61.62	163.1	79.7	Berlin city, Coos County
1.64	1.63	596.3	325.8	Bethlehem CDP, Grafton County
90.95	90.60	27.9	16.7	Bethlehem town, Grafton County
0.29	0.29	348.3	548.3	Blodgett Landing CDP, Merrimack County
25.38	24.69	160.6	58.8	Boscawen town, Merrimack County
28.42	28.03	268.2	100.1	Bow town, Merrimack County
0.81	0.79	450.6	220.3	Bradford CDP, Merrimack County
35.90	35.20	46.9	26.1	Bradford town, Merrimack County
16.98	16.76	267.7	80.5	Brentwood town, Rockingham County
21.43	21.23	51.0	46.9	Bridgewater town, Grafton County
4.77	4.74	356.1	216.7	Bristol CDP, Grafton County
22.34	17.11	178.5	145.4	Bristol town, Grafton County
23.24	22.83	31.2	14.8	Brookfield town, Carroll County
20.14	19.77	252.5	86.0	Brookline town, Hillsborough County
51.11	50.40	0.2	0.8	Cambridge township, Coos County
52.55	51.85	64.3	42.6	Campton town, Grafton County
0.68	0.68	770.6	364.7	Canaan CDP, Grafton County
55.03	53.26	73.4	36.2	Canaan town, Grafton County
30.57	30.33	128.9	49.3	Candia town, Rockingham County
44.40	43.59	54.0	23.0	Canterbury town, Merrimack County
50.20	50.17	15.2	17.9	Carroll town, Coos County
16.53	13.36	82.0	59.5	Center Harbor town, Belknap County
0.95	0.95	590.5	269.5	Center Ossipee CDP, Carroll County
0.59	0.59	208.5	150.8	Center Sandwich CDP, Carroll County
2.13	2.13	—	—	Chandler's purchase, Coos County
0.86	0.81	1,422.2	621.0	Charlestown CDP, Sullivan County
38.05	35.80	142.8	63.2	Charlestown town, Sullivan County
57.35	56.80	5.9	4.8	Chatham town, Carroll County
26.04	25.92	184.0	61.6	Chester town, Rockingham County
47.56	45.55	79.1	39.6	Chesterfield town, Cheshire County
21.12	21.01	120.1	45.8	Chichester town, Merrimack County
44.09	43.12	309.7	145.9	Claremont city, Sullivan County
62.26	60.12	4.4	7.3	Clarksville town, Coos County
2.71	2.63	530.0	299.6	Colebrook CDP, Coos County
40.90	40.69	56.5	35.1	Colebrook town, Coos County
60.60	60.27	12.6	8.6	Columbia town, Coos County
67.48	64.24	664.6	293.5	Concord city, Merrimack County
2.40	2.30	627.8	277.4	Contoocook CDP, Merrimack County
3.05	2.84	641.9	373.9	Conway CDP, Carroll County
71.66	69.40	145.7	99.7	Conway town, Carroll County

Table 9.

Population and Housing Units: 1990 to 2010; and Area Measurements and Density: 2010—Con.

[For information concerning historical counts and geographic change, see "User Notes." For information on confidentiality, nonsampling error, and definitions, see Appendixes]

State Place and [in Selected States] County Subdivision	Population				Housing units			
	2010	2000	1990	Percent change 2000 to 2010	2010	2000	1990	Percent change 2000 to 2010
Cornish town, Sullivan County	1,640	1,661	1,659	-1.3	747	697	689	7.2
Crawfords purchase, Coos County	-	-	-	-	-	-	-	-
Croydon town, Sullivan County	764	661	627	15.6	396	354	309	11.9
Cutts grant, Coos County	-	-	-	-	-	-	-	-
Dalton town, Coos County	979	927	827	5.6	577	520	475	11.0
Danbury town, Merrimack County	1,164	1,071	881	8.7	684	596	541	14.8
Danville town, Rockingham County	4,387	4,023	2,534	9.0	1,684	1,479	960	13.9
Deerfield town, Rockingham County	4,280	3,678	3,124	16.4	1,743	1,406	1,227	24.0
Deering town, Hillsborough County	1,912	1,875	1,707	2.0	932	933	757	-0.1
Derry CDP, Rockingham County	22,015	22,661	20,446	-2.9	9,339	8,942	8,674	4.4
Derry town, Rockingham County	33,109	34,021	29,603	-2.7	13,277	12,735	11,869	4.3
Dixs grant, Coos County	1	-	-	-	15	16	10	-6.3
Dixville township, Coos County	12	75	50	-84.0	33	36	36	-8.3
Dorchester town, Grafton County	355	353	392	0.6	240	236	214	1.7
Dover city, Strafford County	29,987	26,884	25,042	11.5	13,685	11,924	11,307	14.8
Dublin town, Cheshire County	1,597	1,476	1,474	8.2	785	686	651	14.4
Dummer town, Coos County	304	309	327	-1.6	294	252	214	16.7
Dunbarton town, Merrimack County	2,758	2,226	1,759	23.9	1,077	858	685	25.5
Durham CDP, Strafford County	10,345	9,024	9,236	14.6	1,727	1,718	1,569	0.5
Durham town, Strafford County	14,638	12,664	11,818	15.6	3,092	2,923	2,508	5.8
East Kingston town, Rockingham County	2,357	1,784	1,352	32.1	907	648	494	40.0
East Merrimack CDP, Hillsborough County	4,197	3,784	3,656	10.9	2,028	1,709	1,696	18.7
Easton town, Grafton County	254	256	223	-0.8	206	187	171	10.2
Eaton town, Carroll County	393	375	362	4.8	291	239	240	21.8
Effingham town, Carroll County	1,465	1,273	941	15.1	963	791	682	21.7
Ellsworth town, Grafton County	83	87	74	-4.6	96	72	105	33.3
Enfield CDP, Grafton County	1,540	1,698	1,560	-9.3	787	792	734	-0.6
Enfield town, Grafton County	4,582	4,618	3,979	-0.8	2,508	2,372	2,158	5.7
Epping CDP, Rockingham County	1,681	1,673	1,384	0.5	847	723	595	17.2
Epping town, Rockingham County	6,411	5,476	5,162	17.1	2,723	2,215	2,059	22.9
Epsom town, Merrimack County	4,566	4,021	3,591	13.6	1,839	1,592	1,396	15.5
Errol town, Coos County	291	298	292	-2.3	507	447	369	13.4
Ervings location, Coos County	-	1	-	-100.0	-	1	-	-100.0
Exeter CDP, Rockingham County	9,242	9,759	9,556	-5.3	4,342	4,376	4,296	-0.8
Exeter town, Rockingham County	14,306	14,058	12,481	1.8	6,496	6,107	5,346	6.4
Farmington CDP, Strafford County	3,885	3,468	3,567	12.0	1,645	1,440	1,443	14.2
Farmington town, Strafford County	6,786	5,774	5,739	17.5	2,832	2,337	2,260	21.2
Fitzwilliam town, Cheshire County	2,396	2,141	2,011	11.9	1,257	1,074	1,031	17.0
Francestown town, Hillsborough County	1,562	1,480	1,217	5.5	755	656	580	15.1
Franconia town, Grafton County	1,104	924	811	19.5	859	702	646	22.4
Franklin city, Merrimack County	8,477	8,405	8,304	0.9	3,938	3,676	3,744	7.1
Freedom town, Carroll County	1,489	1,303	935	14.3	1,580	1,406	1,359	12.4
Fremont town, Rockingham County	4,283	3,510	2,576	22.0	1,573	1,201	920	31.0
Gilford town, Belknap County	7,126	6,803	5,867	4.7	5,111	4,312	4,397	18.5
Gilmanton town, Belknap County	3,777	3,060	2,609	23.4	2,118	1,848	1,744	14.6
Gilsum town, Cheshire County	813	777	745	4.6	378	343	320	10.2
Goffstown CDP, Hillsborough County	3,196	(X)	(X)	(X)	1,339	(X)	(X)	(X)
Goffstown town, Hillsborough County	17,651	16,929	14,621	4.3	6,341	5,798	5,022	9.4
Gorham CDP, Coos County	1,600	1,773	1,910	-9.8	852	912	869	-6.6
Gorham town, Coos County	2,848	2,895	3,173	-1.6	1,487	1,482	1,426	0.3
Goshen town, Sullivan County	810	741	742	9.3	444	389	394	14.1
Grafton town, Grafton County	1,340	1,138	923	17.8	839	698	601	20.2
Grantham town, Sullivan County	2,985	2,167	1,247	37.7	1,773	1,513	1,289	17.2
Greenfield town, Hillsborough County	1,749	1,657	1,519	5.6	699	640	517	9.2
Greenland town, Rockingham County	3,549	3,208	2,768	10.6	1,443	1,244	1,082	16.0
Greens grant, Coos County	1	-	-	-	5	-	-	-
Greenville CDP, Hillsborough County	1,108	1,131	1,135	-2.0	500	487	479	2.7
Greenville town, Hillsborough County	2,105	2,224	2,231	-5.4	933	918	918	1.6
Groton town, Grafton County	593	456	318	30.0	436	342	262	27.5
Groveton CDP, Coos County	1,118	1,197	1,255	-6.6	550	558	564	-1.4
Hadleys purchase, Coos County	-	-	-	-	-	-	-	-
Hale's location, Carroll County	120	58	-	106.9	102	65	2	56.9
Hampstead town, Rockingham County	8,523	8,297	6,732	2.7	3,727	3,276	2,661	13.8
Hampton CDP, Rockingham County	9,656	9,126	7,989	5.8	4,313	4,020	3,587	7.3
Hampton town, Rockingham County	15,430	14,937	12,278	3.3	9,921	9,349	8,599	6.1
Hampton Beach CDP, Rockingham County	2,275	(X)	(X)	(X)	3,158	(X)	(X)	(X)
Hampton Falls town, Rockingham County	2,236	1,880	1,503	18.9	900	729	591	23.5
Hancock CDP, Hillsborough County	204	(X)	(X)	(X)	115	(X)	(X)	(X)
Hancock town, Hillsborough County	1,654	1,739	1,604	-4.9	864	814	723	6.1
Hanover CDP, Grafton County	8,636	8,162	6,538	5.8	2,276	1,891	1,490	20.4
Hanover town, Grafton County	11,260	10,850	9,212	3.8	3,445	2,989	2,623	15.3
Harrisville town, Cheshire County	961	1,075	981	-10.6	695	698	588	-0.4
Hart's Location town, Carroll County	41	37	36	10.8	54	50	64	8.0

Table 9.

Population and Housing Units: 1990 to 2010; and Area Measurements and Density: 2010—Con.

[For information concerning historical counts and geographic change, see "User Notes." For information on confidentiality, nonsampling error, and definitions, see Appendixes]

Area measurements in square miles		Average per square mile of land		State Place and [in Selected States] County Subdivision
Total area	Land area	Population density	Housing unit density	
42.83	42.11	38.9	17.7	Cornish town, Sullivan County
8.19	8.19	—	—	Crawfords purchase, Coos County
37.45	36.68	20.8	10.8	Croydon town, Sullivan County
11.44	11.44	—	—	Cutts grant, Coos County
28.04	27.48	35.6	21.0	Dalton town, Coos County
37.61	37.30	31.2	18.3	Danbury town, Merrimack County
11.90	11.72	374.3	143.7	Danville town, Rockingham County
52.21	50.89	84.1	34.3	Deerfield town, Rockingham County
31.44	30.80	62.1	30.3	Deering town, Hillsborough County
15.47	15.22	1,446.5	613.6	Derry CDP, Rockingham County
36.48	35.61	929.8	372.8	Derry town, Rockingham County
20.19	20.14	—	0.7	Dixs grant, Coos County
49.00	48.82	0.2	0.7	Dixville township, Coos County
45.27	44.67	7.9	5.4	Dorchester town, Grafton County
29.03	26.72	1,122.3	512.2	Dover city, Strafford County
29.17	28.07	56.9	28.0	Dublin town, Cheshire County
49.44	48.24	6.3	6.1	Dummer town, Coos County
31.36	30.88	89.3	34.9	Dunbarton town, Merrimack County
2.73	2.69	3,845.7	642.0	Durham CDP, Strafford County
24.79	22.38	654.1	138.2	Durham town, Strafford County
10.06	10.00	235.7	90.7	East Kingston town, Rockingham County
3.33	3.02	1,389.7	671.5	East Merrimack CDP, Hillsborough County
31.20	31.18	8.1	6.6	Easton town, Grafton County
25.59	24.29	16.2	12.0	Eaton town, Carroll County
39.60	38.42	38.1	25.1	Effingham town, Carroll County
21.49	21.36	3.9	4.5	Ellsworth town, Grafton County
2.33	2.27	678.4	346.7	Enfield CDP, Grafton County
43.11	40.27	113.8	62.3	Enfield town, Grafton County
2.66	2.66	632.0	318.4	Epping CDP, Rockingham County
26.23	26.02	246.4	104.7	Epping town, Rockingham County
34.46	34.26	133.3	53.7	Epsom town, Merrimack County
69.75	60.63	4.8	8.4	Errol town, Coos County
3.67	3.67	—	—	Erving's location, Coos County
4.56	4.40	2,100.5	986.8	Exeter CDP, Rockingham County
19.93	19.56	731.4	332.1	Exeter town, Rockingham County
6.38	6.38	608.9	257.8	Farmington CDP, Strafford County
37.54	37.22	182.3	76.1	Farmington town, Strafford County
36.02	34.61	69.2	36.3	Fitzwilliam town, Cheshire County
30.68	30.14	51.8	25.0	Francestown town, Hillsborough County
65.99	65.68	16.8	13.1	Franconia town, Grafton County
29.11	27.28	310.7	144.4	Franklin city, Merrimack County
38.12	34.98	42.6	45.2	Freedom town, Carroll County
17.39	17.11	250.3	91.9	Fremont town, Rockingham County
53.70	38.88	183.3	131.5	Gilford town, Belknap County
59.00	57.24	66.0	37.0	Gilmanton town, Belknap County
16.67	16.65	48.8	22.7	Gilsum town, Cheshire County
3.40	3.17	1,008.2	422.4	Goffstown CDP, Hillsborough County
37.47	36.86	478.9	172.0	Goffstown town, Hillsborough County
0.91	0.84	1,904.8	1,014.3	Gorham CDP, Coos County
32.31	31.82	89.5	46.7	Gorham town, Coos County
22.58	22.48	36.0	19.8	Goshen town, Sullivan County
42.61	41.68	32.1	20.1	Grafton town, Grafton County
28.05	27.17	109.9	65.3	Grantham town, Sullivan County
26.66	26.10	67.0	26.8	Greenfield town, Hillsborough County
13.29	10.42	340.6	138.5	Greenland town, Rockingham County
3.67	3.66	0.3	1.4	Greens grant, Coos County
3.38	3.38	327.8	147.9	Greenville CDP, Hillsborough County
6.86	6.86	306.9	136.0	Greenville town, Hillsborough County
40.93	40.86	14.5	10.7	Groton town, Grafton County
2.15	2.06	542.7	267.0	Groveton CDP, Coos County
7.41	7.41	—	—	Hadleys purchase, Coos County
2.48	2.48	48.4	41.1	Hale's location, Carroll County
13.97	13.30	640.8	280.2	Hampstead town, Rockingham County
5.38	5.31	1,818.5	812.2	Hampton CDP, Rockingham County
14.73	12.90	1,196.1	769.1	Hampton town, Rockingham County
1.37	1.27	1,791.3	2,486.6	Hampton Beach CDP, Rockingham County
12.51	12.19	183.4	73.8	Hampton Falls town, Rockingham County
0.42	0.36	566.7	319.4	Hancock CDP, Hillsborough County
31.22	29.97	55.2	28.8	Hancock town, Hillsborough County
4.99	4.52	1,910.6	503.5	Hanover CDP, Grafton County
50.29	49.02	229.7	70.3	Hanover town, Grafton County
20.15	18.58	51.7	37.4	Harrisville town, Cheshire County
18.59	18.48	2.2	2.9	Hart's Location town, Carroll County

Table 9.

Population and Housing Units: 1990 to 2010; and Area Measurements and Density: 2010—Con.

[For information concerning historical counts and geographic change, see "User Notes." For information on confidentiality, nonsampling error, and definitions, see Appendixes]

State Place and [in Selected States] County Subdivision	Population				Percent change 2000 to 2010	Housing units			
	2010	2000	1990			2010	2000	1990	Percent change 2000 to 2010
Haverhill town, Grafton County	4,697	4,416	4,164	6.4	2,379	2,148	2,031	10.8	
Hebron town, Grafton County	602	459	386	31.2	600	517	452	16.1	
Henniker CDP, Merrimack County	1,747	1,627	1,693	7.4	586	558	521	5.0	
Henniker town, Merrimack County	4,836	4,433	4,151	9.1	1,928	1,679	1,558	14.8	
Hill town, Merrimack County	1,089	992	814	9.8	512	436	360	17.4	
Hillsborough CDP, Hillsborough County	1,976	1,842	1,826	7.3	933	809	794	15.3	
Hillsborough town, Hillsborough County	6,011	4,928	4,498	22.0	2,896	2,326	2,157	24.5	
Hinsdale CDP, Cheshire County	1,548	1,713	1,718	-9.6	733	746	747	-1.7	
Hinsdale town, Cheshire County	4,046	4,082	3,936	-0.9	1,827	1,714	1,655	6.6	
Holderness town, Grafton County	2,108	1,930	1,694	9.2	1,510	1,208	1,136	25.0	
Hollis town, Hillsborough County	7,684	7,015	5,705	9.5	2,929	2,491	2,006	17.6	
Hooksett CDP, Merrimack County	4,147	3,609	2,573	14.9	1,945	1,547	1,019	25.7	
Hooksett town, Merrimack County	13,451	11,721	9,002	14.8	5,184	4,307	3,484	20.4	
Hopkinton town, Merrimack County	5,589	5,399	4,806	3.5	2,381	2,210	1,924	7.7	
Hudson CDP, Hillsborough County	7,336	7,814	7,626	-6.1	3,055	3,125	2,960	-2.2	
Hudson town, Hillsborough County	24,467	22,928	19,530	6.7	9,212	8,165	6,902	12.8	
Jackson town, Carroll County	816	835	678	-2.3	1,009	910	865	10.9	
Jaffrey CDP, Cheshire County	2,757	2,802	2,558	-1.6	1,329	1,217	1,169	9.2	
Jaffrey town, Cheshire County	5,457	5,476	5,361	-0.3	2,547	2,352	2,426	8.3	
Jefferson town, Coos County	1,107	1,006	965	10.0	676	582	543	16.2	
Keene city, Cheshire County	23,409	22,563	22,430	3.7	9,719	9,295	8,841	4.6	
Kensington town, Rockingham County	2,124	1,893	1,631	12.2	806	672	585	19.9	
Kilkenny township, Coos County	-	-	-	-	2	-	-	-	
Kingston town, Rockingham County	6,025	5,862	5,591	2.8	2,480	2,265	2,115	9.5	
Laconia city, Belknap County	15,951	16,411	15,743	-2.8	9,879	8,554	8,201	15.5	
Lancaster CDP, Coos County	1,725	1,695	1,859	1.8	816	803	833	1.6	
Lancaster town, Coos County	3,507	3,280	3,522	6.9	1,687	1,501	1,513	12.4	
Landaff town, Grafton County	415	378	350	9.8	230	214	196	7.5	
Langdon town, Sullivan County	688	586	580	17.4	306	269	243	13.8	
Lebanon city, Grafton County	13,151	12,568	12,183	4.6	6,649	5,707	5,718	16.5	
Lee town, Strafford County	4,330	4,145	3,729	4.5	1,765	1,534	1,393	15.1	
Lempster town, Sullivan County	1,154	971	947	18.8	679	577	554	17.7	
Lincoln CDP, Grafton County	993	(X)	(X)	(X)	1,333	(X)	(X)	(X)	
Lincoln town, Grafton County	1,662	1,271	1,229	30.8	2,988	2,339	2,302	27.7	
Lisbon CDP, Grafton County	980	1,070	1,246	-8.4	472	469	532	0.6	
Lisbon town, Grafton County	1,595	1,587	1,664	0.5	809	727	769	11.3	
Litchfield town, Hillsborough County	8,271	7,360	5,516	12.4	2,912	2,389	1,845	21.9	
Littleton CDP, Grafton County	4,412	4,431	4,633	-0.4	2,253	2,093	2,103	7.6	
Littleton town, Grafton County	5,928	5,845	5,827	1.4	3,065	2,746	2,688	11.6	
Livermore town, Grafton County	-	3	-	-100.0	-	1	1	-100.0	
Londonderry CDP, Rockingham County	11,037	11,417	10,114	-3.3	4,105	3,881	3,472	5.8	
Londonderry town, Rockingham County	24,129	23,236	19,781	3.8	8,771	7,718	6,739	13.6	
Loudon CDP, Merrimack County	559	(X)	(X)	(X)	256	(X)	(X)	(X)	
Loudon town, Merrimack County	5,317	4,481	4,114	18.7	2,081	1,684	1,476	23.6	
Low and Burbanks grant, Coos County	-	-	-	-	-	-	-	-	
Lyman town, Grafton County	533	487	388	9.4	369	280	269	31.8	
Lyme town, Grafton County	1,716	1,679	1,496	2.2	810	752	693	7.7	
Lyndeborough town, Hillsborough County	1,683	1,585	1,294	6.2	687	587	488	17.0	
Madbury town, Strafford County	1,771	1,509	1,404	17.4	653	543	528	20.3	
Madison town, Carroll County	2,502	1,984	1,704	26.1	1,877	1,589	1,422	18.1	
Manchester city, Hillsborough County	109,565	107,006	99,332	2.4	49,288	45,892	44,361	7.4	
Marlborough CDP, Cheshire County	1,094	1,089	1,211	0.5	492	494	539	-0.4	
Marlborough town, Cheshire County	2,063	2,009	1,927	2.7	946	896	856	5.6	
Marlow town, Cheshire County	742	747	650	-0.7	408	396	364	3.0	
Martins location, Coos County	-	-	-	-	1	-	-	-	
Mason town, Hillsborough County	1,382	1,147	1,212	20.5	571	455	451	25.5	
Melvin Village CDP, Carroll County	241	(X)	(X)	(X)	274	(X)	(X)	(X)	
Meredith CDP, Belknap County	1,718	1,739	1,654	-1.2	943	832	837	13.3	
Meredith town, Belknap County	6,241	5,943	4,837	5.0	4,728	4,191	3,720	12.8	
Merrimack town, Hillsborough County	25,494	25,119	22,156	1.5	9,818	8,959	7,915	9.6	
Middleton town, Strafford County	1,783	1,440	1,183	23.8	851	706	654	20.5	
Milan town, Coos County	1,337	1,331	1,295	0.5	809	756	680	7.0	
Milford CDP, Hillsborough County	8,835	8,293	8,015	6.5	4,042	3,463	3,398	16.7	
Milford town, Hillsborough County	15,115	13,535	11,795	11.7	6,295	5,316	4,793	18.4	
Millsfield township, Coos County	23	22	21	4.5	61	62	53	-1.6	
Milton CDP, Strafford County	575	(X)	(X)	(X)	261	(X)	(X)	(X)	
Milton town, Strafford County	4,598	3,910	3,691	17.6	2,181	1,815	1,767	20.2	
Milton Mills CDP, Strafford County	299	(X)	(X)	(X)	127	(X)	(X)	(X)	
Monroe town, Grafton County	788	759	746	3.8	372	333	304	11.7	
Mont Vernon town, Hillsborough County	2,409	2,034	1,812	18.4	868	720	614	20.6	
Moultonborough town, Carroll County	4,044	4,484	2,956	-9.8	4,940	4,523	3,850	9.2	
Mountain Lakes CDP, Grafton County	488	(X)	(X)	(X)	417	(X)	(X)	(X)	
Nashua city, Hillsborough County	86,494	86,605	79,662	-0.1	37,168	35,387	33,383	5.0	

Table 9.

Population and Housing Units: 1990 to 2010; and Area Measurements and Density: 2010—Con.

[For information concerning historical counts and geographic change, see "User Notes." For information on confidentiality, nonsampling error, and definitions, see Appendixes]

Area measurements in square miles		Average per square mile of land		State Place and [in Selected States] County Subdivision
Total area	Land area	Population density	Housing unit density	
52.11	50.99	92.1	46.7	Haverhill town, Grafton County
18.71	16.53	36.4	36.3	Hebron town, Grafton County
1.42	1.42	1,230.3	412.7	Henniker CDP, Merrimack County
44.72	44.04	109.8	43.8	Henniker town, Merrimack County
26.94	26.67	40.8	19.2	Hill town, Merrimack County
1.63	1.63	1,212.3	572.4	Hillsborough CDP, Hillsborough County
44.63	43.64	137.7	66.4	Hillsborough town, Hillsborough County
2.50	2.36	655.9	310.6	Hinsdale CDP, Cheshire County
22.71	20.56	196.8	88.9	Hinsdale town, Cheshire County
35.83	30.47	69.2	49.6	Holderness town, Grafton County
32.32	31.76	241.9	92.2	Hollis town, Hillsborough County
5.17	4.79	865.8	406.1	Hooksett CDP, Merrimack County
37.50	36.46	368.9	142.2	Hooksett town, Merrimack County
45.16	43.37	128.9	54.9	Hopkinton town, Merrimack County
3.20	3.04	2,413.2	1,004.9	Hudson CDP, Hillsborough County
29.25	28.32	863.9	325.3	Hudson town, Hillsborough County
66.95	66.91	12.2	15.1	Jackson town, Carroll County
2.63	2.54	1,085.4	523.2	Jaffrey CDP, Cheshire County
40.05	38.31	142.4	66.5	Jaffrey town, Cheshire County
50.43	50.10	22.1	13.5	Jefferson town, Coos County
37.50	37.25	628.4	260.9	Keene city, Cheshire County
11.96	11.94	177.9	67.5	Kensington town, Rockingham County
25.64	25.62	—	0.1	Kilkenny township, Coos County
20.88	19.65	306.6	126.2	Kingston town, Rockingham County
26.58	20.06	795.2	492.5	Laconia city, Belknap County
2.05	2.01	858.2	406.0	Lancaster CDP, Coos County
50.72	49.85	70.4	33.8	Lancaster town, Coos County
28.48	28.34	14.6	8.1	Landaff town, Grafton County
16.33	16.25	42.3	18.8	Langdon town, Sullivan County
41.33	40.32	326.2	164.9	Lebanon city, Grafton County
20.16	19.95	217.0	88.5	Lee town, Strafford County
32.77	32.35	35.7	21.0	Lempster town, Sullivan County
2.74	2.69	369.1	495.5	Lincoln CDP, Grafton County
130.90	130.34	12.8	22.9	Lincoln town, Grafton County
3.35	3.24	302.5	145.7	Lisbon CDP, Grafton County
26.64	26.19	60.9	30.9	Lisbon town, Grafton County
15.30	14.95	553.2	194.8	Litchfield town, Hillsborough County
8.56	8.46	521.5	266.3	Littleton CDP, Grafton County
54.11	50.10	118.3	61.2	Littleton town, Grafton County
63.79	63.62	—	—	Livermore town, Grafton County
12.33	12.31	896.6	333.5	Londonderry CDP, Rockingham County
42.11	41.98	574.8	208.9	Londonderry town, Rockingham County
1.66	1.66	336.7	154.2	Loudon CDP, Merrimack County
47.44	46.79	113.6	44.5	Loudon town, Merrimack County
26.15	26.14	—	—	Low and Burbanks grant, Coos County
28.80	28.50	18.7	12.9	Lyman town, Grafton County
54.72	53.84	31.9	15.0	Lyme town, Grafton County
30.53	30.42	55.3	22.6	Lyndeborough town, Hillsborough County
12.22	11.65	152.0	56.1	Madbury town, Strafford County
40.93	38.54	64.9	48.7	Madison town, Carroll County
34.96	33.10	3,310.1	1,489.1	Manchester city, Hillsborough County
1.69	1.69	647.3	291.1	Marlborough CDP, Cheshire County
20.64	20.41	101.1	46.3	Marlborough town, Cheshire County
26.42	25.95	28.6	15.7	Marlow town, Cheshire County
3.76	3.73	—	0.3	Martins location, Coos County
23.97	23.91	57.8	23.9	Mason town, Hillsborough County
0.90	0.90	267.8	304.4	Melvin Village CDP, Carroll County
1.84	1.47	1,168.7	641.5	Meredith CDP, Belknap County
54.21	39.91	156.4	118.5	Meredith town, Belknap County
33.41	32.53	783.7	301.8	Merrimack town, Hillsborough County
18.51	18.09	98.6	47.0	Middleton town, Strafford County
64.56	63.81	21.0	12.7	Milan town, Coos County
5.74	5.71	1,547.3	707.9	Milford CDP, Hillsborough County
25.38	25.32	597.0	248.6	Milford town, Hillsborough County
45.17	44.77	0.5	1.4	Millsfield township, Coos County
0.81	0.81	709.9	322.2	Milton CDP, Strafford County
34.34	33.12	138.8	65.9	Milton town, Strafford County
0.87	0.86	347.7	147.7	Milton Mills CDP, Strafford County
23.79	22.30	35.3	16.7	Monroe town, Grafton County
16.70	16.62	144.9	52.2	Mont Vernon town, Hillsborough County
74.61	59.47	68.0	83.1	Moultonborough town, Carroll County
3.64	3.53	138.2	118.1	Mountain Lakes CDP, Grafton County
31.89	30.85	2,803.7	1,204.8	Nashua city, Hillsborough County

Table 9.

Population and Housing Units: 1990 to 2010; and Area Measurements and Density: 2010—Con.

[For information concerning historical counts and geographic change, see "User Notes." For information on confidentiality, nonsampling error, and definitions, see Appendixes]

State Place and [in Selected States] County Subdivision	Population				Percent change 2000 to 2010	Housing units			
	2010	2000	1990			2010	2000	1990	Percent change 2000 to 2010
Nelson town, Cheshire County	729	634	535	15.0	460	400	379	15.0	
New Boston town, Hillsborough County	5,321	4,138	3,214	28.6	1,967	1,462	1,138	34.5	
Newbury town, Merrimack County	2,072	1,702	1,347	21.7	1,559	1,311	1,184	18.9	
New Castle town, Rockingham County	968	1,010	840	-4.2	537	488	399	10.0	
New Durham town, Strafford County	2,638	2,220	1,974	18.8	1,523	1,309	1,231	16.3	
Newfields CDP, Rockingham County	301	(X)	(X)	(X)	130	(X)	(X)	(X)	
Newfields town, Rockingham County	1,680	1,551	888	8.3	591	532	324	11.1	
New Hampton CDP, Belknap County	351	(X)	(X)	(X)	128	(X)	(X)	(X)	
New Hampton town, Belknap County	2,165	1,950	1,606	11.0	1,083	944	855	14.7	
Newington town, Rockingham County	753	775	990	-2.8	322	305	320	5.6	
New Ipswich town, Hillsborough County	5,099	4,289	4,014	18.9	1,916	1,449	1,326	32.2	
New London CDP, Merrimack County	1,415	(X)	(X)	(X)	342	(X)	(X)	(X)	
New London town, Merrimack County	4,397	4,116	3,180	6.8	2,303	2,085	1,806	10.5	
Newmarket CDP, Rockingham County	5,297	5,124	4,917	3.4	2,594	2,359	2,400	10.0	
Newmarket town, Rockingham County	8,936	8,027	7,157	11.3	4,139	3,457	3,285	19.7	
Newport CDP, Sullivan County	4,769	4,008	3,772	19.0	2,184	1,676	1,725	30.3	
Newport town, Sullivan County	6,507	6,269	6,110	3.8	2,938	2,633	2,675	11.6	
Newton town, Rockingham County	4,603	4,289	3,473	7.3	1,751	1,552	1,251	12.8	
North Conway CDP, Carroll County	2,349	2,069	2,032	13.5	1,804	1,602	1,550	12.6	
Northfield town, Merrimack County	4,829	4,548	4,263	6.2	1,969	1,782	1,671	10.5	
North Hampton town, Rockingham County	4,301	4,259	3,637	1.0	1,914	1,782	1,495	7.4	
Northumberland town, Coos County	2,288	2,438	2,492	-6.2	1,121	1,112	1,060	0.8	
North Walpole CDP, Cheshire County	828	(X)	(X)	(X)	387	(X)	(X)	(X)	
Northwood town, Rockingham County	4,241	3,640	3,124	16.5	2,129	1,905	1,791	11.8	
North Woodstock CDP, Grafton County	528	(X)	(X)	(X)	759	(X)	(X)	(X)	
Nottingham town, Rockingham County	4,785	3,701	2,939	29.3	1,986	1,592	1,314	24.7	
Odell township, Coos County	4	5	-	-20.0	73	73	78	-	
Orange town, Grafton County	331	299	237	10.7	167	134	119	24.6	
Orford town, Grafton County	1,237	1,091	1,008	13.4	656	561	534	16.9	
Ossipee town, Carroll County	4,345	4,211	3,309	3.2	3,057	2,742	2,617	11.5	
Pelham town, Hillsborough County	12,897	10,914	9,408	18.2	4,598	3,740	3,118	22.9	
Pembroke town, Merrimack County	7,115	6,897	6,561	3.2	2,872	2,734	2,536	5.0	
Peterborough CDP, Hillsborough County	3,103	2,944	2,685	5.4	1,577	1,289	1,228	22.3	
Peterborough town, Hillsborough County	6,284	5,883	5,239	6.8	2,956	2,509	2,242	17.8	
Piermont town, Grafton County	790	709	624	11.4	474	394	404	20.3	
Pinarville CDP, Hillsborough County	4,780	5,779	4,654	-17.3	2,036	1,969	1,910	3.4	
Pinkhams grant, Coos County	9	-	11	-	-	1	3	-100.0	
Pittsburg town, Coos County	869	867	901	0.2	1,748	1,281	1,224	36.5	
Pittsfield CDP, Merrimack County	1,576	1,669	1,717	-5.6	750	699	749	7.3	
Pittsfield town, Merrimack County	4,106	3,931	3,701	4.5	1,769	1,569	1,527	12.7	
Plainfield CDP, Sullivan County	205	(X)	(X)	(X)	91	(X)	(X)	(X)	
Plainfield town, Sullivan County	2,364	2,241	2,056	5.5	984	877	784	12.2	
Plaistow town, Rockingham County	7,609	7,747	7,316	-1.8	3,016	2,927	2,691	3.0	
Plymouth CDP, Grafton County	4,456	3,528	3,967	26.3	910	772	1,066	17.9	
Plymouth town, Grafton County	6,990	5,892	5,811	18.6	2,231	1,901	2,075	17.4	
Portsmouth city, Rockingham County	20,779	20,784	25,925	-	10,625	10,186	11,369	4.3	
Randolph town, Coos County	310	339	371	-8.6	312	298	275	4.7	
Raymond CDP, Rockingham County	2,855	2,839	2,516	0.6	1,313	1,167	1,041	12.5	
Raymond town, Rockingham County	10,138	9,674	8,713	4.8	4,254	3,710	3,350	14.7	
Richmond town, Cheshire County	1,155	1,077	877	7.2	492	432	398	13.9	
Rindge town, Cheshire County	6,014	5,451	4,941	10.3	2,224	1,863	1,781	19.4	
Rochester city, Strafford County	29,752	28,461	26,630	4.5	13,372	11,836	11,076	13.0	
Rollinsford town, Strafford County	2,527	2,648	2,645	-4.6	1,099	1,060	1,040	3.7	
Roxbury town, Cheshire County	229	237	248	-3.4	101	90	95	12.2	
Rumney town, Grafton County	1,480	1,480	1,446	-	933	879	943	6.1	
Rye town, Rockingham County	5,298	5,182	4,612	2.2	2,852	2,645	2,443	7.8	
Salem town, Rockingham County	28,776	28,112	25,746	2.4	11,810	10,866	9,897	8.7	
Salisbury town, Merrimack County	1,382	1,137	1,061	21.5	598	514	422	16.3	
Sanbornton town, Belknap County	2,966	2,581	2,136	14.9	1,612	1,359	1,131	18.6	
Sanbornville CDP, Carroll County	1,056	(X)	(X)	(X)	482	(X)	(X)	(X)	
Sandown town, Rockingham County	5,986	5,143	4,060	16.4	2,214	1,777	1,488	24.6	
Sandwich town, Carroll County	1,326	1,286	1,066	3.1	1,057	965	864	9.5	
Sargents purchase, Coos County	3	-	-	-	1	-	-	-	
Seabrook town, Rockingham County	8,693	7,934	6,503	9.6	4,544	4,066	3,469	11.8	
Seabrook Beach CDP, Rockingham County	992	(X)	(X)	(X)	1,042	(X)	(X)	(X)	
Second College grant, Coos County	-	-	-	-	10	8	8	25.0	
Sharon town, Hillsborough County	352	360	299	-2.2	164	159	128	3.1	
Shelburne town, Coos County	372	379	437	-1.8	217	197	179	10.2	
Somersworth city, Strafford County	11,766	11,477	11,249	2.5	5,199	4,841	4,719	7.4	
South Hampton town, Rockingham County	814	844	740	-3.6	504	308	263	63.6	
South Hooksett CDP, Merrimack County	5,418	5,282	3,638	2.6	1,845	1,717	1,443	7.5	
Springfield town, Sullivan County	1,311	945	788	38.7	702	534	481	31.5	
Stark town, Coos County	556	516	518	7.8	445	384	368	15.9	

Table 9.

Population and Housing Units: 1990 to 2010; and Area Measurements and Density: 2010—Con.

[For information concerning historical counts and geographic change, see "User Notes." For information on confidentiality, nonsampling error, and definitions, see Appendixes]

Area measurements in square miles		Average per square mile of land		State Place and [in Selected States] County Subdivision
Total area	Land area	Population density	Housing unit density	
23.25	21.88	33.3	21.0	Nelson town, Cheshire County
43.21	42.84	124.2	45.9	New Boston town, Hillsborough County
38.19	35.93	57.7	43.4	Newbury town, Merrimack County
2.28	0.83	1,166.3	647.0	New Castle town, Rockingham County
44.15	41.51	63.6	36.7	New Durham town, Strafford County
0.38	0.38	792.1	342.1	Newfields CDP, Rockingham County
7.26	7.10	236.6	83.2	Newfields town, Rockingham County
1.29	1.27	276.4	100.8	New Hampton CDP, Belknap County
38.28	36.69	59.0	29.5	New Hampton town, Belknap County
12.46	8.19	91.9	39.3	Newington town, Rockingham County
33.06	32.75	155.7	58.5	New Ipswich town, Hillsborough County
1.01	1.01	1,401.0	338.6	New London CDP, Merrimack County
25.57	22.49	195.5	102.4	New London town, Merrimack County
2.02	1.93	2,744.6	1,344.0	Newmarket CDP, Rockingham County
14.17	12.55	712.0	329.8	Newmarket town, Rockingham County
13.26	13.26	359.7	164.7	Newport CDP, Sullivan County
43.64	43.57	149.3	67.4	Newport town, Sullivan County
10.06	9.91	464.5	176.7	Newton town, Rockingham County
4.33	4.28	548.8	421.5	North Conway CDP, Carroll County
29.17	28.83	167.5	68.3	Northfield town, Merrimack County
14.41	13.91	309.2	137.6	North Hampton town, Rockingham County
36.49	35.71	64.1	31.4	Northumberland town, Coos County
0.69	0.68	1,217.6	569.1	North Walpole CDP, Cheshire County
30.08	28.05	151.2	75.9	Northwood town, Rockingham County
0.87	0.84	628.6	903.6	North Woodstock CDP, Grafton County
48.45	46.53	102.8	42.7	Nottingham town, Rockingham County
45.17	44.47	0.1	1.6	Odell township, Coos County
23.22	23.16	14.3	7.2	Orange town, Grafton County
48.03	46.63	26.5	14.1	Orford town, Grafton County
75.57	70.76	61.4	43.2	Ossipee town, Carroll County
26.93	26.37	489.1	174.4	Pelham town, Hillsborough County
22.94	22.78	312.3	126.1	Pembroke town, Merrimack County
4.77	4.74	654.6	332.7	Peterborough CDP, Hillsborough County
38.12	37.72	166.6	78.4	Peterborough town, Hillsborough County
39.85	38.47	20.5	12.3	Piermont town, Grafton County
1.82	1.66	2,879.5	1,226.5	Pinardville CDP, Hillsborough County
3.78	3.77	2.4	-	Pinkhams grant, Coos County
291.18	281.37	3.1	6.2	Pittsburg town, Coos County
1.51	1.51	1,043.7	496.7	Pittsfield CDP, Merrimack County
24.13	23.85	172.2	74.2	Pittsfield town, Merrimack County
0.58	0.58	353.4	156.9	Plainfield CDP, Sullivan County
52.92	52.17	45.3	18.9	Plainfield town, Sullivan County
10.64	10.63	715.8	283.7	Plaislow town, Rockingham County
3.74	3.65	1,220.8	249.3	Plymouth CDP, Grafton County
28.70	28.13	248.5	79.3	Plymouth town, Grafton County
16.85	15.63	1,329.4	679.8	Portsmouth city, Rockingham County
47.15	47.09	6.6	6.6	Randolph town, Coos County
4.80	4.66	612.7	281.8	Raymond CDP, Rockingham County
29.56	28.77	352.4	147.9	Raymond town, Rockingham County
37.77	37.58	30.7	13.1	Richmond town, Cheshire County
39.93	37.17	161.8	59.8	Rindge town, Cheshire County
45.76	45.40	655.3	294.5	Rochester city, Strafford County
7.59	7.29	346.6	150.8	Rollinsford town, Strafford County
12.19	11.90	19.2	8.5	Roxbury town, Cheshire County
42.57	41.66	35.5	22.4	Rumney town, Grafton County
36.72	12.61	420.1	226.2	Rye town, Rockingham County
25.85	24.72	1,164.1	477.8	Salem town, Rockingham County
40.17	39.92	34.6	15.0	Salisbury town, Merrimack County
49.76	47.61	62.3	33.9	Sanbornton town, Belknap County
1.59	1.59	664.2	303.1	Sanbornville CDP, Carroll County
14.44	13.95	429.1	158.7	Sandown town, Rockingham County
93.47	90.23	14.7	11.7	Sandwich town, Carroll County
25.85	25.84	0.1	-	Sargents purchase, Coos County
9.66	8.90	976.7	510.6	Seabrook town, Rockingham County
1.39	0.96	1,033.3	1,085.4	Seabrook Beach CDP, Rockingham County
41.65	41.15	-	0.2	Second College grant, Coos County
15.61	15.61	22.5	10.5	Sharon town, Hillsborough County
48.80	47.95	7.8	4.5	Shelburne town, Coos County
9.99	9.79	1,201.8	531.1	Somersworth city, Strafford County
8.02	7.89	103.2	63.9	South Hampton town, Rockingham County
5.31	5.31	1,020.3	347.5	South Hooksett CDP, Merrimack County
44.13	43.25	30.3	16.2	Springfield town, Sullivan County
59.59	58.69	9.5	7.6	Stark town, Coos County

Table 9.

Population and Housing Units: 1990 to 2010; and Area Measurements and Density: 2010—Con.

[For information concerning historical counts and geographic change, see "User Notes." For information on confidentiality, nonsampling error, and definitions, see Appendixes]

State Place and [in Selected States] County Subdivision	Population				Housing units			
	2010	2000	1990	Percent change 2000 to 2010	2010	2000	1990	Percent change 2000 to 2010
Stewartstown town, Coos County	1,004	1,012	1,048	-0.8	920	760	628	21.1
Stoddard town, Cheshire County	1,232	928	622	32.8	1,044	939	890	11.2
Stratford town, Stratford County	3,991	3,626	2,965	10.1	1,784	1,564	1,264	14.1
Stratford town, Coos County	746	942	927	-20.8	574	540	479	6.3
Stratham town, Rockingham County	7,255	6,355	4,955	14.2	2,864	2,371	1,917	20.8
Success township, Coos County	-	2	-	-100.0	63	71	11	-11.3
Sugar Hill town, Grafton County	563	563	464	-	429	385	338	11.4
Suissevale CDP, Carroll County	249	(X)	(X)	(X)	546	(X)	(X)	(X)
Sullivan town, Cheshire County	677	746	706	-9.2	309	299	283	3.3
Sunapee town, Sullivan County	3,365	3,055	2,559	10.1	2,431	2,143	1,904	13.4
Suncook CDP, Merrimack County	5,379	5,362	5,214	0.3	2,408	2,409	2,246	-
Surry town, Cheshire County	732	673	667	8.8	324	282	262	14.9
Sutton town, Merrimack County	1,837	1,544	1,457	19.0	985	826	776	19.2
Swanzy town, Cheshire County	7,230	6,800	6,236	6.3	3,205	2,818	2,582	13.7
Tamworth town, Carroll County	2,856	2,510	2,165	13.8	1,969	1,662	1,523	18.5
Temple town, Hillsborough County	1,366	1,297	1,194	5.3	542	465	429	16.6
Thompson and Meserves purchase, Coos County	-	-	-	-	-	-	-	-
Thornton town, Grafton County	2,490	1,843	1,505	35.1	1,862	1,487	1,368	25.2
Tilton town, Belknap County	3,567	3,477	3,240	2.6	1,845	1,631	1,612	13.1
Tilton Northfield CDP	3,075	3,231	3,081	-4.8	1,335	1,311	1,293	1.8
Belknap County	1,619	1,645	1,557	-1.6	697	654	678	6.6
Merrimack County	1,456	1,586	1,524	-8.2	638	657	615	-2.9
Troy CDP, Cheshire County	1,221	(X)	(X)	(X)	528	(X)	(X)	(X)
Troy town, Cheshire County	2,145	1,962	2,097	9.3	932	775	867	20.3
Tuftonboro town, Carroll County	2,387	2,148	1,842	11.1	2,435	2,019	2,027	20.6
Union CDP, Carroll County	204	(X)	(X)	(X)	93	(X)	(X)	(X)
Unity town, Sullivan County	1,671	1,530	1,341	9.2	736	594	558	23.9
Wakefield town, Carroll County	5,078	4,252	3,057	19.4	3,832	3,331	3,158	15.0
Walpole CDP, Cheshire County	605	(X)	(X)	(X)	346	(X)	(X)	(X)
Walpole town, Cheshire County	3,734	3,594	3,210	3.9	1,715	1,592	1,465	7.7
Warner CDP, Merrimack County	444	(X)	(X)	(X)	216	(X)	(X)	(X)
Warner town, Merrimack County	2,833	2,760	2,250	2.6	1,358	1,228	1,039	10.6
Warren town, Grafton County	904	873	820	3.6	612	506	488	20.9
Washington town, Sullivan County	1,123	895	628	25.5	1,093	925	866	18.2
Waterville Valley town, Grafton County	247	257	151	-3.9	1,189	1,097	1,168	8.4
Weare town, Hillsborough County	8,785	7,776	6,193	13.0	3,466	2,828	2,417	22.6
Webster town, Merrimack County	1,872	1,579	1,405	18.6	849	672	577	26.3
Wentworth town, Grafton County	911	798	630	14.2	533	437	400	22.0
Wentworth location, Coos County	33	44	53	-25.0	106	109	118	-2.8
Westmoreland town, Cheshire County	1,874	1,747	1,596	7.3	680	618	573	10.0
West Stewartstown CDP, Coos County	386	(X)	(X)	(X)	140	(X)	(X)	(X)
West Swanzy CDP, Cheshire County	1,308	1,118	1,055	17.0	617	506	456	21.9
Whitefield CDP, Coos County	1,142	1,089	1,041	4.9	544	525	488	3.6
Whitefield town, Coos County	2,306	2,038	1,909	13.2	1,339	1,158	1,111	15.6
Wilmot town, Merrimack County	1,358	1,144	935	18.7	659	530	458	24.3
Wilton CDP, Hillsborough County	1,163	1,236	1,165	-5.9	498	520	479	-4.2
Wilton town, Hillsborough County	3,677	3,743	3,122	-1.8	1,530	1,451	1,251	5.4
Winchester CDP, Cheshire County	1,733	1,832	1,735	-5.4	738	727	691	1.5
Winchester town, Cheshire County	4,341	4,144	4,038	4.8	1,932	1,741	1,673	11.0
Windham town, Rockingham County	13,592	10,709	9,000	26.9	5,164	3,906	3,327	32.2
Windsor town, Hillsborough County	224	201	107	11.4	137	120	120	14.2
Wolfeboro CDP, Carroll County	2,838	2,979	2,783	-4.7	1,858	1,722	1,758	7.9
Wolfeboro town, Carroll County	6,269	6,083	4,807	3.1	4,443	3,903	3,631	13.8
Woodstock town, Grafton County	1,374	1,139	1,167	20.6	1,421	1,264	1,204	12.4
Woodsville CDP, Grafton County	1,126	1,081	1,122	4.2	558	517	532	7.9

Table 9.

Population and Housing Units: 1990 to 2010; and Area Measurements and Density: 2010—Con.

[For information concerning historical counts and geographic change, see "User Notes." For information on confidentiality, nonsampling error, and definitions, see Appendixes]

Area measurements in square miles		Average per square mile of land		State Place and [in Selected States] County Subdivision
Total area	Land area	Population density	Housing unit density	
46.79	46.21	21.7	19.9	Stewartstown town, Coos County
53.00	50.89	24.2	20.5	Stoddard town, Cheshire County
51.38	49.16	81.2	36.3	Strafford town, Strafford County
80.00	79.48	9.4	7.2	Strafford town, Coos County
15.47	15.10	480.5	189.7	Stratham town, Rockingham County
57.01	56.49	—	1.1	Success township, Coos County
17.19	17.00	33.1	25.2	Sugar Hill town, Grafton County
1.18	1.17	212.8	466.7	Suissevale CDP, Carroll County
18.72	18.53	36.5	16.7	Sullivan town, Cheshire County
25.21	21.13	159.3	115.0	Sunapee town, Sullivan County
3.87	3.71	1,449.9	649.1	Suncook CDP, Merrimack County
15.95	15.63	46.8	20.7	Surry town, Cheshire County
43.15	42.37	43.4	23.2	Sutton town, Merrimack County
45.39	45.01	160.6	71.2	Swanzy town, Cheshire County
60.68	59.71	47.8	33.0	Tamworth town, Carroll County
22.45	22.23	61.4	24.4	Temple town, Hillsborough County
18.51	18.51	—	—	Thompson and Meserves purchase, Coos County
50.79	50.18	49.6	37.1	Thornton town, Grafton County
11.99	11.13	320.5	165.8	Tilton town, Belknap County
2.93	2.83	1,086.6	471.7	Tilton Northfield CDP
1.85	1.78	909.6	391.6	Belknap County
1.08	1.05	1,386.7	607.6	Merrimack County
1.28	1.28	953.9	412.5	Troy CDP, Cheshire County
17.58	17.42	123.1	53.5	Troy town, Cheshire County
49.98	40.95	58.3	59.5	Tuftonboro town, Carroll County
0.32	0.32	637.5	290.6	Union CDP, Carroll County
37.18	36.92	45.3	19.9	Unity town, Sullivan County
44.70	39.46	128.7	97.1	Wakefield town, Carroll County
1.23	1.22	495.9	283.6	Walpole CDP, Cheshire County
36.70	35.18	106.1	48.7	Walpole town, Cheshire County
0.80	0.80	555.0	270.0	Warner CDP, Merrimack County
55.94	55.69	50.9	24.4	Warner town, Merrimack County
49.05	48.47	18.7	12.6	Warren town, Grafton County
47.63	45.45	24.7	24.0	Washington town, Sullivan County
64.95	64.82	3.8	18.3	Waterville Valley town, Grafton County
59.88	58.84	149.3	58.9	Weare town, Hillsborough County
28.62	28.05	66.7	30.3	Webster town, Merrimack County
41.96	41.45	22.0	12.9	Wentworth town, Grafton County
19.43	18.52	1.8	5.7	Wentworth location, Coos County
36.88	35.79	52.4	19.0	Westmoreland town, Cheshire County
0.64	0.61	632.8	229.5	West Stewartstown CDP, Coos County
2.55	2.53	517.0	243.9	West Swanzy CDP, Cheshire County
1.29	1.29	885.3	421.7	Whitefield CDP, Coos County
34.66	34.22	67.4	39.1	Whitefield town, Coos County
29.72	29.51	46.0	22.3	Wilmot town, Merrimack County
1.95	1.95	596.4	255.4	Wilton CDP, Hillsborough County
25.85	25.75	142.8	59.4	Wilton town, Hillsborough County
3.01	3.01	575.7	245.2	Winchester CDP, Cheshire County
55.51	54.96	79.0	35.2	Winchester town, Cheshire County
27.86	26.81	507.0	192.6	Windham town, Rockingham County
8.62	8.35	26.8	16.4	Windsor town, Hillsborough County
7.13	6.80	417.4	273.2	Wolfeboro CDP, Carroll County
58.44	47.87	131.0	92.8	Wolfeboro town, Carroll County
59.23	58.68	23.4	24.2	Woodstock town, Grafton County
0.90	0.88	1,279.5	634.1	Woodsville CDP, Grafton County

Table 10.

Rank by 2010 Population and Housing Units: 2000 and 2010

[For information concerning historical counts and geographic change, see "User Notes." For information on confidentiality, nonsampling error, and definitions, see Appendixes]

Place [2,500 or More Population]	Population			Housing units		
	2010 rank	2010	2000	2010 rank	2010	2000
Manchester city	1	109,565	107,006	1	49,288	45,892
Nashua city	2	86,494	86,605	2	37,168	35,387
Concord city	3	42,695	40,687	3	18,852	16,881
Dover city	4	29,987	26,884	4	13,685	11,924
Rochester city	5	29,752	28,461	5	13,372	11,836
Keene city	6	23,409	22,563	8	9,719	9,295
Derry CDP	7	22,015	22,661	9	9,339	8,942
Portsmouth city	8	20,779	20,784	6	10,625	10,186
Laconia city	9	15,951	16,411	7	9,879	8,554
Claremont city	10	13,355	13,151	11	6,293	6,074
Lebanon city	11	13,151	12,568	10	6,649	5,707
Somersworth city	12	11,766	11,477	12	5,199	4,841
Londonderry CDP	13	11,037	11,417	16	4,105	3,881
Durham CDP	14	10,345	9,024	30	1,727	1,718
Berlin city	15	10,051	10,331	13	4,910	5,111
Hampton CDP	16	9,656	9,126	15	4,313	4,020
Exeter CDP	17	9,242	9,759	14	4,342	4,376
Milford CDP	18	8,835	8,293	17	4,042	3,463
Hanover CDP	19	8,636	8,162	22	2,276	1,891
Franklin city	20	8,477	8,405	18	3,938	3,676
Hudson CDP	21	7,336	7,814	19	3,055	3,125
South Hooksett CDP	22	5,418	5,282	29	1,845	1,717
Suncook CDP	23	5,379	5,362	21	2,408	2,409
Newmarket CDP	24	5,297	5,124	20	2,594	2,359
Pinardville CDP	25	4,780	5,779	25	2,036	1,969
Newport CDP	26	4,769	4,008	24	2,184	1,676
Plymouth CDP	27	4,456	3,528	37	910	772
Littleton CDP	28	4,412	4,431	23	2,253	2,093
East Merrimack CDP	29	4,197	3,784	26	2,028	1,709
Hooksett CDP	30	4,147	3,609	27	1,945	1,547
Farmington CDP	31	3,885	3,468	31	1,645	1,440
Goffstown CDP	32	3,196	(X)	33	1,339	(X)
Peterborough CDP	33	3,103	2,944	32	1,577	1,289
Tilton Northfield CDP	34	3,075	3,231	34	1,335	1,311
Raymond CDP	35	2,855	2,839	36	1,313	1,167
Wolfeboro CDP	36	2,838	2,979	28	1,858	1,722
Jaffrey CDP	37	2,757	2,802	35	1,329	1,217

Table 10a.
Rank by 2010 Population and Housing Units: 2000 and 2010—Con.

[For information concerning historical counts and geographic change, see "User Notes." For information on confidentiality, nonsampling error, and definitions, see Appendixes]

Minor Civil Division [2,500 or More Population]	Population			Housing units		
	2010 rank	2010	2000	2010 rank	2010	2000
Manchester city, Hillsborough County	1	109,565	107,006	1	49,288	45,892
Nashua city, Hillsborough County	2	86,494	86,605	2	37,168	35,387
Concord city, Merrimack County	3	42,695	40,687	3	18,852	16,881
Derry town, Rockingham County	4	33,109	34,021	6	13,277	12,735
Dover city, Strafford County	5	29,987	26,884	4	13,685	11,924
Rochester city, Strafford County	6	29,752	28,461	5	13,372	11,836
Salem town, Rockingham County	7	28,776	28,112	7	11,810	10,866
Merrimack town, Hillsborough County	8	25,494	25,119	11	9,818	8,959
Hudson town, Hillsborough County	9	24,467	22,928	13	9,212	8,165
Londonderry town, Rockingham County	10	24,129	23,236	14	8,771	7,718
Keene city, Cheshire County	11	23,409	22,563	12	9,719	9,295
Bedford town, Hillsborough County	12	21,203	18,274	15	7,634	6,401
Portsmouth city, Rockingham County	13	20,779	20,784	8	10,275	10,186
Goffstown town, Hillsborough County	14	17,651	16,929	19	6,341	5,798
Laconia city, Belknap County	15	15,951	16,411	10	9,879	8,554
Hampton town, Rockingham County	16	15,430	14,937	9	9,921	9,349
Milford town, Hillsborough County	17	15,115	13,535	20	6,295	5,316
Durham town, Strafford County	18	14,638	12,664	45	3,092	2,923
Exeter town, Rockingham County	19	14,306	14,058	18	6,496	6,107
Windham town, Rockingham County	20	13,592	10,709	24	5,164	3,906
Hooksett town, Merrimack County	21	13,451	11,721	23	5,184	4,307
Claremont city, Sullivan County	22	13,355	13,151	21	6,293	6,074
Lebanon city, Grafton County	23	13,151	12,568	17	6,649	5,707
Pelham town, Hillsborough County	24	12,897	10,914	29	4,598	3,740
Somersworth city, Strafford County	25	11,766	11,477	22	5,199	4,841
Hanover town, Grafton County	26	11,260	10,850	43	3,445	2,989
Amherst town, Hillsborough County	27	11,201	10,769	33	4,280	3,752
Raymond town, Rockingham County	28	10,138	9,674	34	4,254	3,710
Conway town, Carroll County	29	10,115	8,604	16	6,921	5,927
Berlin city, Coos County	30	10,051	10,331	27	4,910	5,111
Newmarket town, Rockingham County	31	8,936	8,027	35	4,139	3,457
Weare town, Hillsborough County	32	8,785	7,776	42	3,466	2,828
Seabrook town, Rockingham County	33	8,693	7,934	30	4,544	4,066
Barrington town, Strafford County	34	8,576	7,475	40	3,661	3,147
Hampstead town, Rockingham County	35	8,523	8,297	39	3,727	3,276
Franklin city, Merrimack County	36	8,477	8,405	37	3,938	3,676
Litchfield town, Hillsborough County	37	8,271	7,360	52	2,912	2,389
Hollis town, Hillsborough County	38	7,684	7,015	51	2,929	2,491
Plaistow town, Rockingham County	39	7,609	7,747	48	3,016	2,927
Bow town, Merrimack County	40	7,519	7,138	58	2,807	2,330
Belmont town, Belknap County	41	7,356	6,716	41	3,615	3,113
Stratham town, Rockingham County	42	7,255	6,355	55	2,864	2,371
Swanzey town, Cheshire County	43	7,230	6,800	44	3,205	2,818
Gilford town, Belknap County	44	7,126	6,803	25	5,111	4,312
Pembroke town, Merrimack County	45	7,115	6,897	54	2,772	2,734
Plymouth town, Grafton County	46	6,990	5,892	71	2,231	1,901
Farmington town, Strafford County	47	6,786	5,774	57	2,832	2,337
Atkinson town, Rockingham County	48	6,751	6,178	59	2,788	2,431
Newport town, Sullivan County	49	6,507	6,269	50	2,938	2,633
Epping town, Rockingham County	50	6,411	5,476	60	2,723	2,215
Peterborough town, Hillsborough County	51	6,284	5,883	49	2,956	2,509
Wolfeboro town, Carroll County	52	6,269	6,083	31	4,443	3,903
Meredith town, Belknap County	53	6,241	5,943	28	4,728	4,191
Kingston town, Rockingham County	54	6,025	5,862	64	2,480	2,265
Rindge town, Cheshire County	55	6,014	5,451	72	2,224	1,863
Hillsborough town, Hillsborough County	56	6,011	4,928	53	2,896	2,326
Sandown town, Rockingham County	57	5,986	5,143	73	2,214	1,777
Littleton town, Grafton County	58	5,928	5,845	46	3,065	2,746
Hopkinton town, Merrimack County	59	5,589	5,399	66	2,381	2,210
Jaffrey town, Cheshire County	60	5,457	5,476	61	2,547	2,352
New Boston town, Hillsborough County	61	5,321	4,138	82	1,967	1,462
Loudon town, Merrimack County	62	5,317	4,481	78	2,081	1,684
Rye town, Rockingham County	63	5,298	5,182	56	2,852	2,645
Alton town, Belknap County	64	5,250	4,502	32	4,281	3,522
Charlestown town, Sullivan County	65	5,114	4,749	70	2,263	2,067
New Ipswich town, Hillsborough County	66	5,099	4,289	86	1,916	1,449
Wakefield town, Carroll County	67	5,078	4,252	38	3,832	3,331
Brookline town, Hillsborough County	68	4,991	4,181	102	1,700	1,384
Auburn town, Rockingham County	69	4,953	4,682	93	1,814	1,622
Henniker town, Merrimack County	70	4,836	4,433	85	1,928	1,679
Northfield town, Merrimack County	71	4,829	4,548	80	1,969	1,782
Nottingham town, Rockingham County	72	4,785	3,701	79	1,986	1,592
Chester town, Rockingham County	73	4,768	3,792	106	1,596	1,247
Haverhill town, Grafton County	74	4,697	4,416	67	2,379	2,148
Newton town, Rockingham County	75	4,603	4,289	99	1,751	1,552

Table 10a.

Rank by 2010 Population and Housing Units: 2000 and 2010—Con.

[For information concerning historical counts and geographic change, see "User Notes." For information on confidentiality, nonsampling error, and definitions, see Appendixes]

Minor Civil Division [2,500 or More Population]	Population			Housing units		
	2010 rank	2010	2000	2010 rank	2010	2000
Milton town, Strafford County	76	4,598	3,910	75	2,181	1,815
Barnstead town, Belknap County	77	4,593	3,886	68	2,319	1,994
Enfield town, Grafton County	78	4,582	4,618	62	2,508	2,372
Epsom town, Merrimack County	79	4,566	4,021	91	1,839	1,592
Brentwood town, Rockingham County	80	4,486	3,197	116	1,350	920
New London town, Merrimack County	81	4,397	4,116	69	2,303	2,085
Danville town, Rockingham County	82	4,387	4,023	104	1,684	1,479
Ossipee town, Carroll County	83	4,345	4,211	47	3,057	2,742
Winchester town, Cheshire County	84	4,341	4,144	83	1,932	1,741
Lee town, Strafford County	85	4,330	4,145	98	1,765	1,534
Allenstown town, Merrimack County	86	4,322	4,843	88	1,881	1,962
North Hampton town, Rockingham County	87	4,301	4,259	87	1,914	1,782
Fremont town, Rockingham County	88	4,283	3,510	107	1,573	1,201
Deerfield town, Rockingham County	89	4,280	3,678	100	1,743	1,406
Northwood town, Rockingham County	90	4,241	3,640	76	2,129	1,905
Pittsfield town, Merrimack County	91	4,106	3,931	97	1,769	1,569
Hinsdale town, Cheshire County	92	4,046	4,082	92	1,827	1,714
Moultonborough town, Carroll County	93	4,044	4,484	26	4,940	4,523
Strafford town, Strafford County	94	3,991	3,626	95	1,784	1,564
Boscawen town, Merrimack County	95	3,965	3,672	113	1,453	1,295
Canaan town, Grafton County	96	3,909	3,319	84	1,930	1,588
Candia town, Rockingham County	96	3,909	3,911	111	1,494	1,384
Gilmanton town, Belknap County	98	3,777	3,060	77	2,118	1,848
Walpole town, Cheshire County	99	3,734	3,594	101	1,715	1,592
Wilton town, Hillsborough County	100	3,677	3,743	108	1,530	1,451
Chesterfield town, Cheshire County	101	3,604	3,542	94	1,802	1,632
Tilton town, Belknap County	102	3,567	3,477	90	1,845	1,631
Greenland town, Rockingham County	103	3,549	3,208	114	1,443	1,244
Lancaster town, Coos County	104	3,507	3,280	103	1,687	1,501
Sunapee town, Sullivan County	105	3,365	3,055	65	2,431	2,143
Campton town, Grafton County	106	3,333	2,719	74	2,208	1,759
Bristol town, Grafton County	107	3,054	3,033	63	2,488	2,073
Grantham town, Sullivan County	108	2,985	2,167	96	1,773	1,513
Sanbornton town, Belknap County	109	2,966	2,581	105	1,612	1,359
Tamworth town, Carroll County	110	2,856	2,510	80	1,969	1,662
Gorham town, Coos County	111	2,848	2,895	112	1,487	1,482
Warner town, Merrimack County	112	2,833	2,760	115	1,358	1,228
Bartlett town, Carroll County	113	2,788	2,705	36	4,115	3,589
Dunbarton town, Merrimack County	114	2,758	2,226	119	1,077	858
New Durham town, Strafford County	115	2,638	2,220	109	1,523	1,309
Antrim town, Hillsborough County	116	2,637	2,449	117	1,329	1,160
Rollinsford town, Strafford County	117	2,527	2,648	118	1,099	1,060
Bethlehem town, Grafton County	118	2,526	2,199	110	1,517	1,307
Chichester town, Merrimack County	119	2,523	2,236	120	963	849
Madison town, Carroll County	120	2,502	1,984	89	1,877	1,589

Table 11.

Rank of Places by Percent Change in Population: 2000 to 2010

[For information concerning historical counts and geographic change, see "User Notes." For information on confidentiality, nonsampling error, and definitions, see Appendixes]

Place [2,500 or More Population]	Population		Percent change	
	2010	2000	Rank	Percent
Plymouth CDP	4,456	3,528	1	26.30
Newport CDP	4,769	4,008	2	18.99
Hooksett CDP	4,147	3,609	3	14.91
Durham CDP	10,345	9,024	4	14.64
Farmington CDP	3,885	3,468	5	12.02
Dover city	29,987	26,884	6	11.54
East Merrimack CDP	4,197	3,784	7	10.91
Milford CDP	8,835	8,293	8	6.54
Hampton CDP	9,656	9,126	9	5.81
Hanover CDP	8,636	8,162	10	5.81
Peterborough CDP	3,103	2,944	11	5.40
Concord city	42,695	40,687	12	4.94
Lebanon city	13,151	12,568	13	4.64
Rochester city	29,752	28,461	14	4.54
Keene city	23,409	22,563	15	3.75
Newmarket CDP	5,297	5,124	16	3.38
South Hooksett CDP	5,418	5,282	17	2.57
Somersworth city	11,766	11,477	18	2.52
Manchester city	109,565	107,006	19	2.39
Claremont city	13,355	13,151	20	1.55
Franklin city	8,477	8,405	21	0.86
Raymond CDP	2,855	2,839	22	0.56
Suncook CDP	5,379	5,362	23	0.32
Portsmouth city	20,779	20,784	24	-0.02
Nashua city	86,494	86,605	25	-0.13
Littleton CDP	4,412	4,431	26	-0.43
Jaffrey CDP	2,757	2,802	27	-1.61
Berlin city	10,051	10,331	28	-2.71
Laconia city	15,951	16,411	29	-2.80
Derry CDP	22,015	22,661	30	-2.85
Londonderry CDP	11,037	11,417	31	-3.33
Wolfeboro CDP	2,838	2,979	32	-4.73
Tilton Northfield CDP	3,075	3,231	33	-4.83
Exeter CDP	9,242	9,759	34	-5.30
Hudson CDP	7,336	7,814	35	-6.12
Pinardville CDP	4,780	5,779	36	-17.29
Goffstown CDP	3,196	(X)	(X)	(X)

Table 12.

Population and Housing Units for Urban Areas: 2010

[For information on confidentiality, nonsampling error, and definitions, see Appendixes]

State Urbanized Area Urban Cluster	State total		Total for urban areas crossing state lines	
	Population	Housing units	Population	Housing units
New Hampshire	1,316,470	614,754	(X)	(X)
Urban	793,872	343,920	(X)	(X)
In urbanized area	623,168	265,821	(X)	(X)
In urban cluster	170,704	78,099	(X)	(X)
Rural	522,598	270,834	(X)	(X)
URBANIZED AREA				
Boston, MA--NH--RI	93,038	38,750	4,181,019	1,719,241
Dover--Rochester, NH--ME	80,262	33,138	88,087	36,466
Manchester, NH	158,377	67,731	(X)	(X)
Nashua, NH--MA	219,082	88,990	226,400	91,802
Portsmouth, NH--ME	72,409	37,212	88,200	47,590
URBAN CLUSTER				
Bellows Falls, VT--NH	1,549	770	5,713	2,699
Berlin, NH	11,159	5,570	(X)	(X)
Brattleboro, VT--NH	9	8	9,980	5,055
Charlestown, NH	2,815	1,251	(X)	(X)
Claremont, NH	9,598	4,659	(X)	(X)
Concord, NH	42,611	18,930	(X)	(X)
Epping, NH	3,490	1,291	(X)	(X)
Farmington, NH	2,957	1,268	(X)	(X)
Franklin, NH	9,582	4,292	(X)	(X)
Hillsborough, NH	3,884	1,801	(X)	(X)
Jaffrey, NH	3,003	1,447	(X)	(X)
Keene, NH	22,510	9,528	(X)	(X)
Laconia, NH	18,636	10,112	(X)	(X)
Lebanon--Hanover, NH--VT	19,403	7,919	25,690	11,040
Littleton, NH	3,518	1,840	(X)	(X)
Newport, NH	3,142	1,501	(X)	(X)
North Conway, NH	4,685	3,183	(X)	(X)
Peterborough, NH	3,165	1,570	(X)	(X)
Plymouth, NH	4,959	1,147	(X)	(X)
Windsor, VT--NH	29	12	2,704	1,395

Appendixes

Several appendixes traditionally found in printed reports are now available in a separate volume. For the following, see CPH-2-A, *Population and Housing Unit Counts, Selected Appendixes*, in print or on the Internet at <www.census.gov/prod/cen2010/cph-2-a.pdf> :

Appendix A. Geographic Terms and Concepts

Appendix B. Definitions of Subject Characteristics

Appendix C. Data Collection and Processing Procedures

Appendix D. Questionnaire

Appendix F. Operational Overview and Accuracy of the Data

Appendix G. Residence Rule and Residence Situations for the 2010 Census of the United States

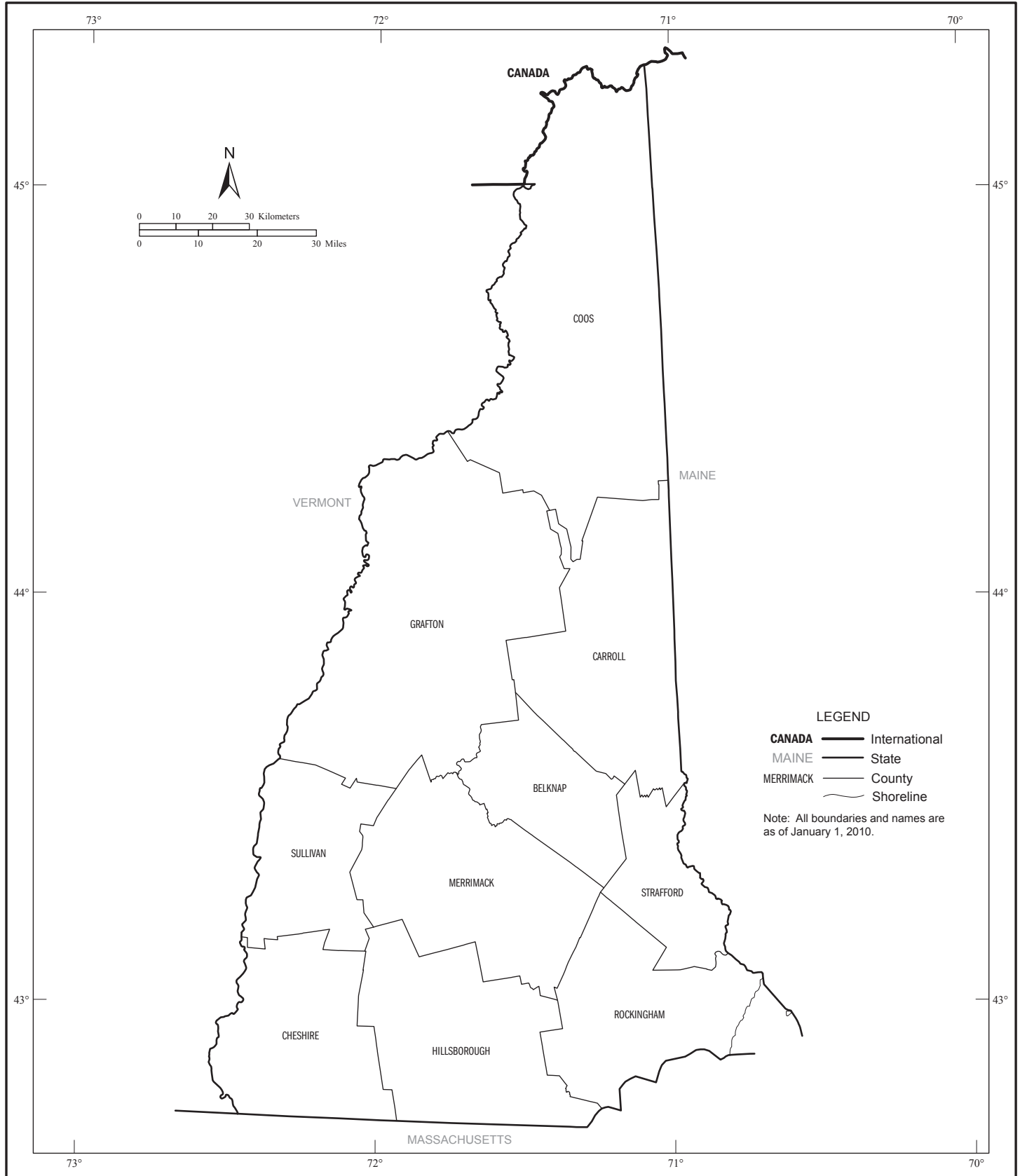
Appendix H. Acknowledgments

This Appendix section contains:

Appendix E. Maps

Appendix E. Maps

Counties



Geographic Areas Reference Map Legend, Section Locator, and Location Index

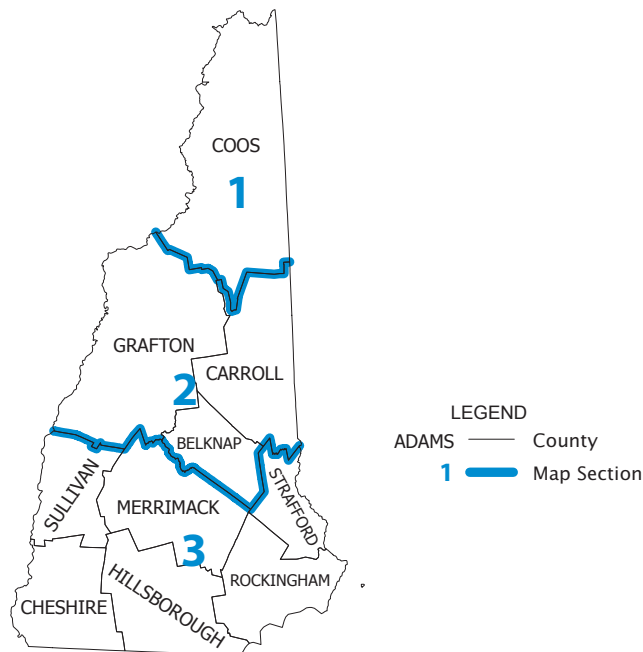
Geographic Areas Reference Map Legend

	International		Zena	Census Designated Place
	State		Lake Erie	Large River, Lake, Water Body, or Shoreline
	ERIE County		A fishhook joins contiguous and/or discontinuous parts of the same geographic entity.	
	YORK County Subdivision ¹		SEE INSET A	Inset
	ROME Incorporated Place ¹			

¹ A "0" following a place name indicates that the place is an independent place or independent city. An independent place is not part of any legal county subdivision and thus serves as the statistical equivalent of a legal county subdivision. An independent city is not part of any county or legal county subdivision and thus serves as both the statistical equivalent of a county and a legal county subdivision. The name for the county subdivision is always the same as that of the place and never shown separately on the map.

Note: All legal and statistical area boundaries and names are as of January 1, 2010. Where international, state, county, independent city, and/or county subdivision boundaries coincide, the map shows the boundary symbol for the highest level of these geographic entities. The county and independent city boundaries are always shown. Where a county subdivision boundary symbol coincides with a place boundary, the map does not show the place boundary symbol. Any geographic entity name may include '(pt)' if some portion of the entity extends beyond the limits of the map area displayed on the page, or if multiple discontinuous pieces of the entity have been discretely labeled on the page. A geographic entity name may include '(pts)' if many discontinuous pieces exist for that entity that cannot be discretely labeled. The boundaries shown on this map are for Census Bureau statistical data collection and tabulation purposes only; their depiction and designation for statistical purposes does not constitute a determination of jurisdictional authority or rights of ownership or entitlement.

Section Locator

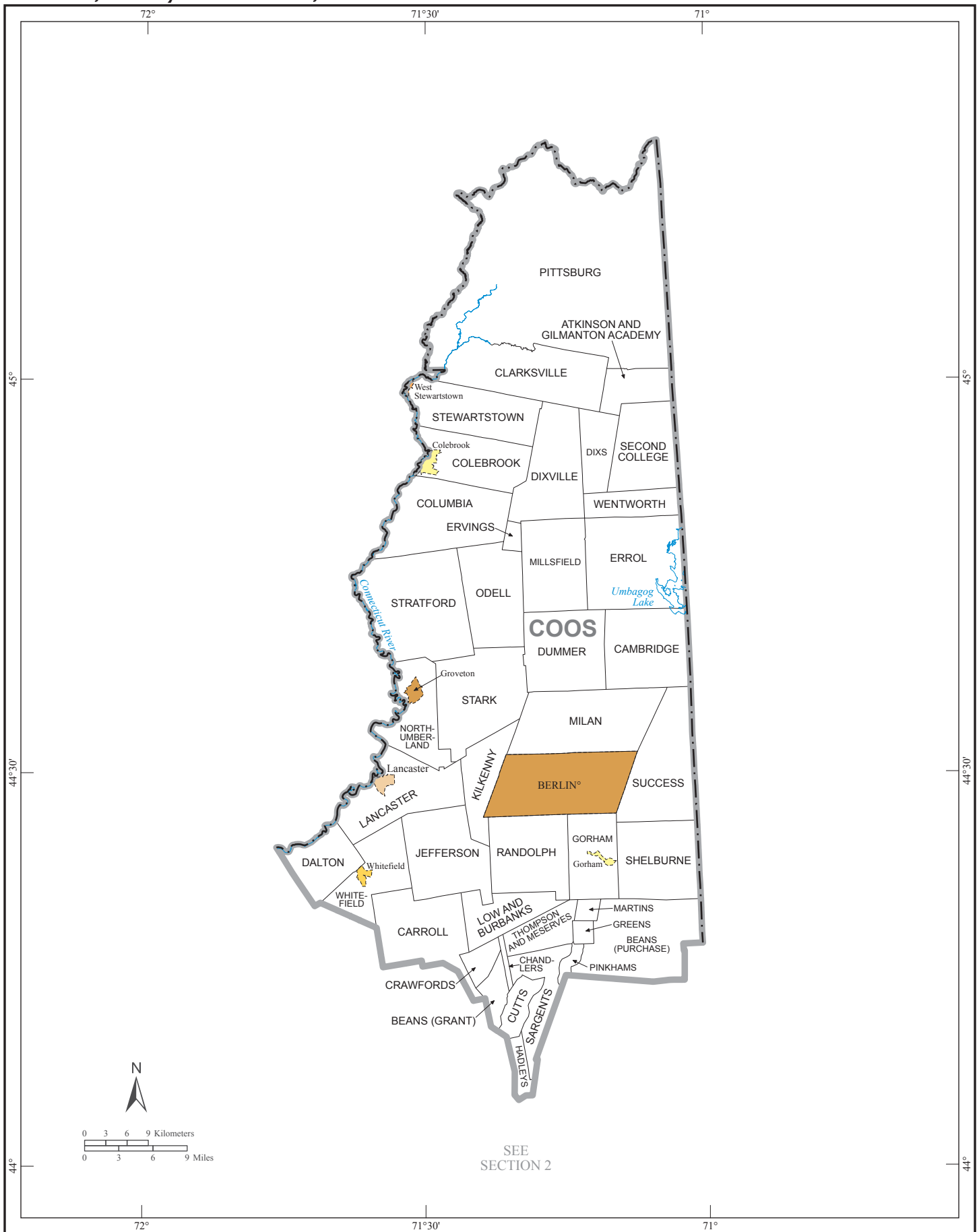


County Location Index

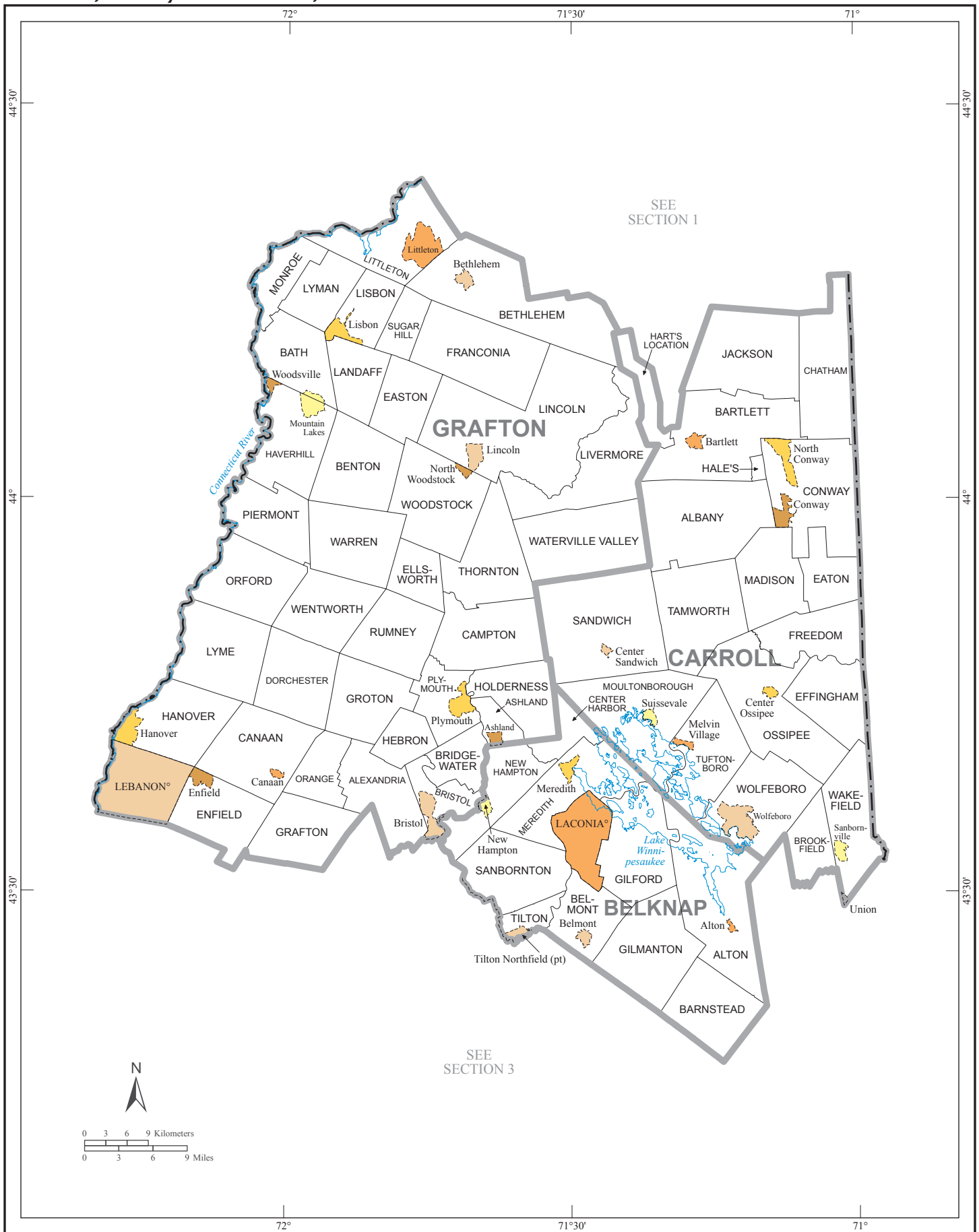
This list presents the map section numbers for each county in the state. Map section numbers refer to the geographic areas reference maps only.

COUNTY	MAP SEC	COUNTY	MAP SEC	COUNTY	MAP SEC
Belknap	2	Grafton	2	Strafford	3
Carroll	2	Hillsborough	3	Sullivan	3
Cheshire	3	Merrimack	3		
Coos	1	Rockingham	3		

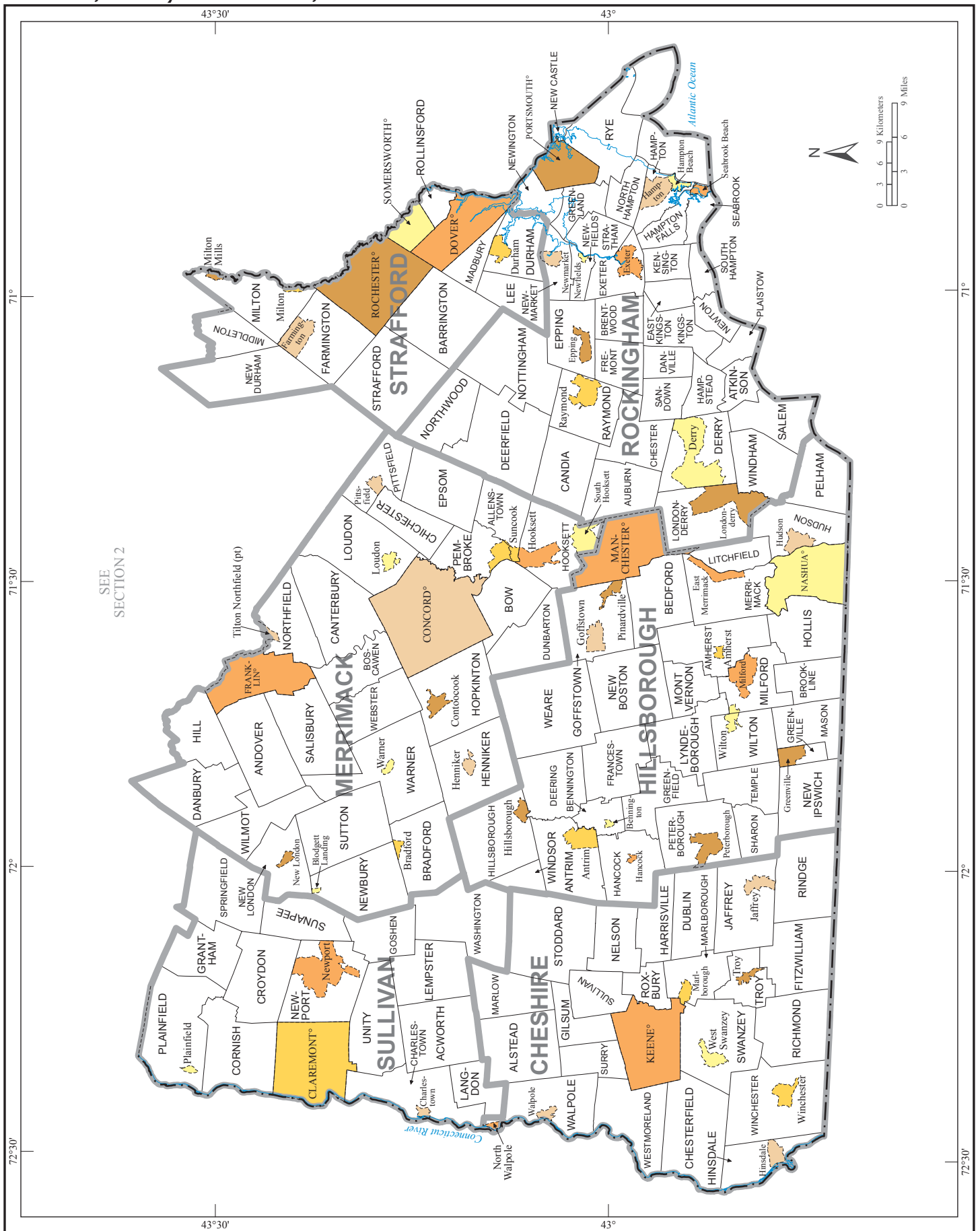
Counties, County Subdivisions, and Places - Section 1



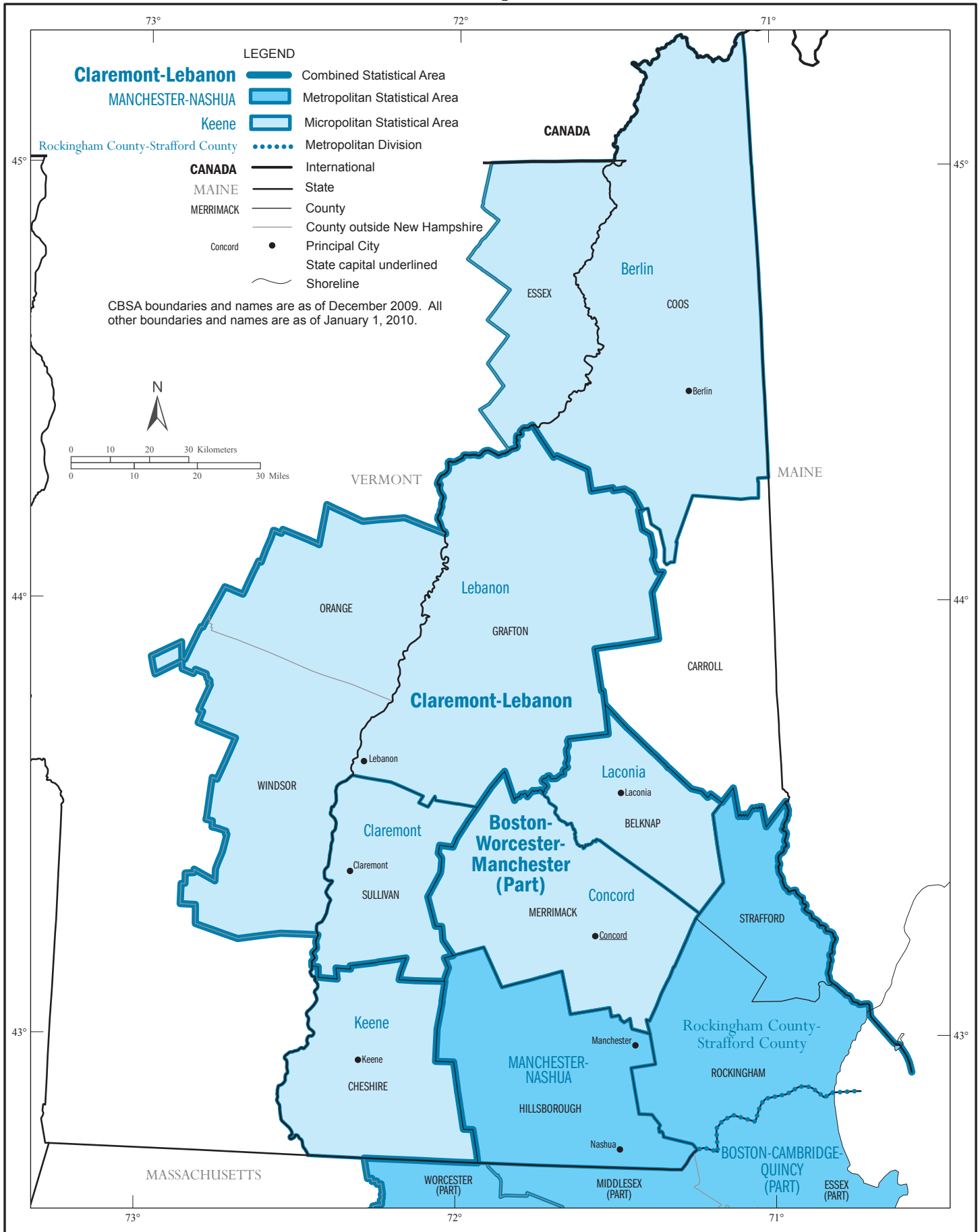
Counties, County Subdivisions, and Places - Section 2



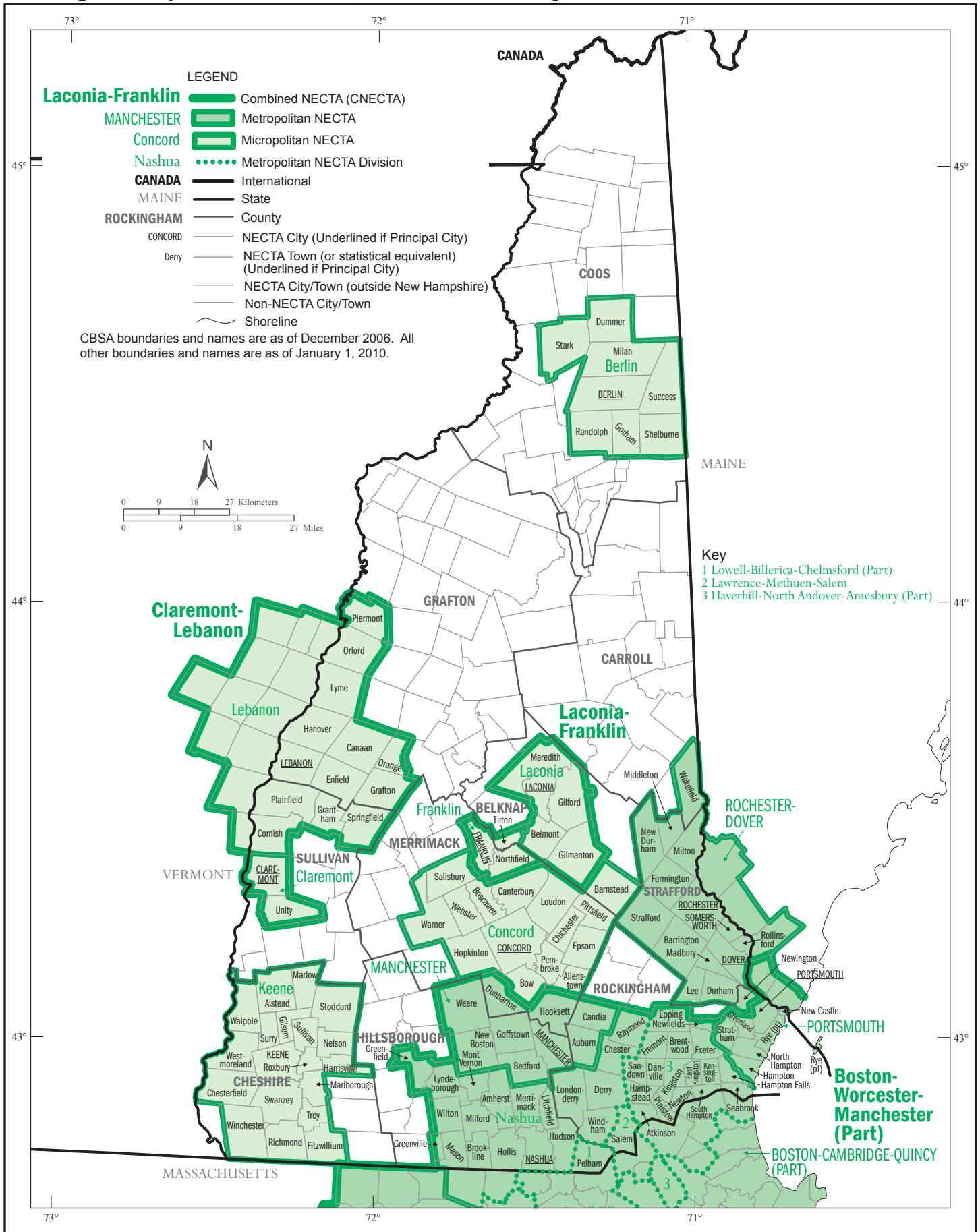
Counties, County Subdivisions, and Places - Section 3



Core Based Statistical Areas, Counties, and Principal Cities



New England City and Town Areas (NECTAs) and Principal Cities



Urban Areas

