

WELCOME

**NATURAL RESOURCES CONSERVATION SERVICE
STATE TECHNICAL COMMITTEE**

Environmental Quality Incentives Program

2013

EQIP 2013

The program will be very similar to the 2012 program.

National Initiatives include:

Organic

On-Farm Energy

Seasonal High Tunnel

Longleaf Pine

National Water Quality

EQIP 2013

Continued emphasis on resource concerns involving:

Cropland

Pastureland

Confined Animal Systems

Forestry

Closure of Waste Lagoons

Agricultural Chemical Handling Facilities

Spill Prevention Containment Countermeasure

Irrigation Efficiency

EQIP 2013

Funding levels

Organic	\$400,000
On-Farm Energy	\$291,789
Season High Tunnel	\$500,000
Longleaf Pine	\$1,000,000
National Water Quality	\$1,094,000
General EQIP	<u>\$18,428,951</u>
TOTAL	\$21,714,740

EQIP 2013

- Requirement to obligate 60% to animal agricultural contracts.
- Target 10% of funds to Socially Disadvantaged and New /Beginning Farmers
- Obligation date of July 1, 2013
- Application reception dates (batching)

February 15 General EQIP and Nat'l Initiatives

March 15 General EQIP and Nat'l Initiatives

April 19 National Initiatives

National Water Quality Initiative

NWQI

State Technical Committee

March 1, 2013

NWQI

To assist producers with addressing high priority water resource concerns in small watersheds with streams or water bodies in one or more of the following categories (henceforth called Focus Waters):

NWQI

Impaired – a stream or water body documented to be impaired and identified on the state's 303(d) list of impaired waters as designated by EPA.

Threatened – A stream or water body with water quality data documenting an impairment but does not have a TMDL implementation plan and is not listed on the 303(d) list of impaired waters.

NWQI

TMDL's – A stream or water body that has been on EPA's 303(d) list of impaired waters but may have been removed because there is a TMDL plan for implementation.

Critical – A stream or water body upstream of an impaired segment which is determined by the STC to be a significant contributing source of the downstream impairment for a stream in one of more of the categories above.

NWQI

NWQI emphasis began in 2012 targeting up to three 12 digit HUC's. Three HUC's chosen last year were:

Upper Mitchell River **030401010501**

Little Fisher River **030401010703**

Big Creek **03010103106**

NWQI

Water Quality impairments for the NWQI are related to:

Nutrients (algal growth, low DO, ammonia, Chlorophyll-A)

Sediment (including turbidity)

Pathogens (related to animal agriculture)

NWQI

The NWQI rules allow states to consider removal and replacement of up to two of these watersheds.

Considerations for selection of watersheds:

- Existing monitoring data
- State (possibly local) watershed management plans
- Current staffing
- State WQ agency support
- Other

NWQI

Decision Point

We must decide either to stay with these three 12 digit HUC's or ask for approval to change up to two of the three watersheds.

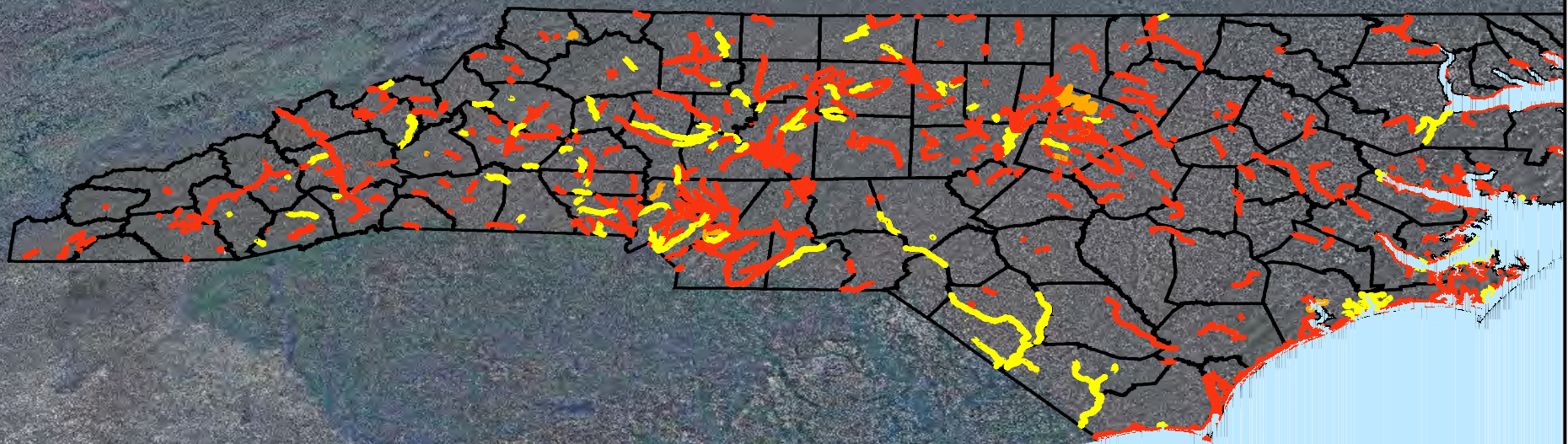
Decision Timeframe – March 15, 2013

Set timeline in order to meet the July 1, 2013 obligation date.

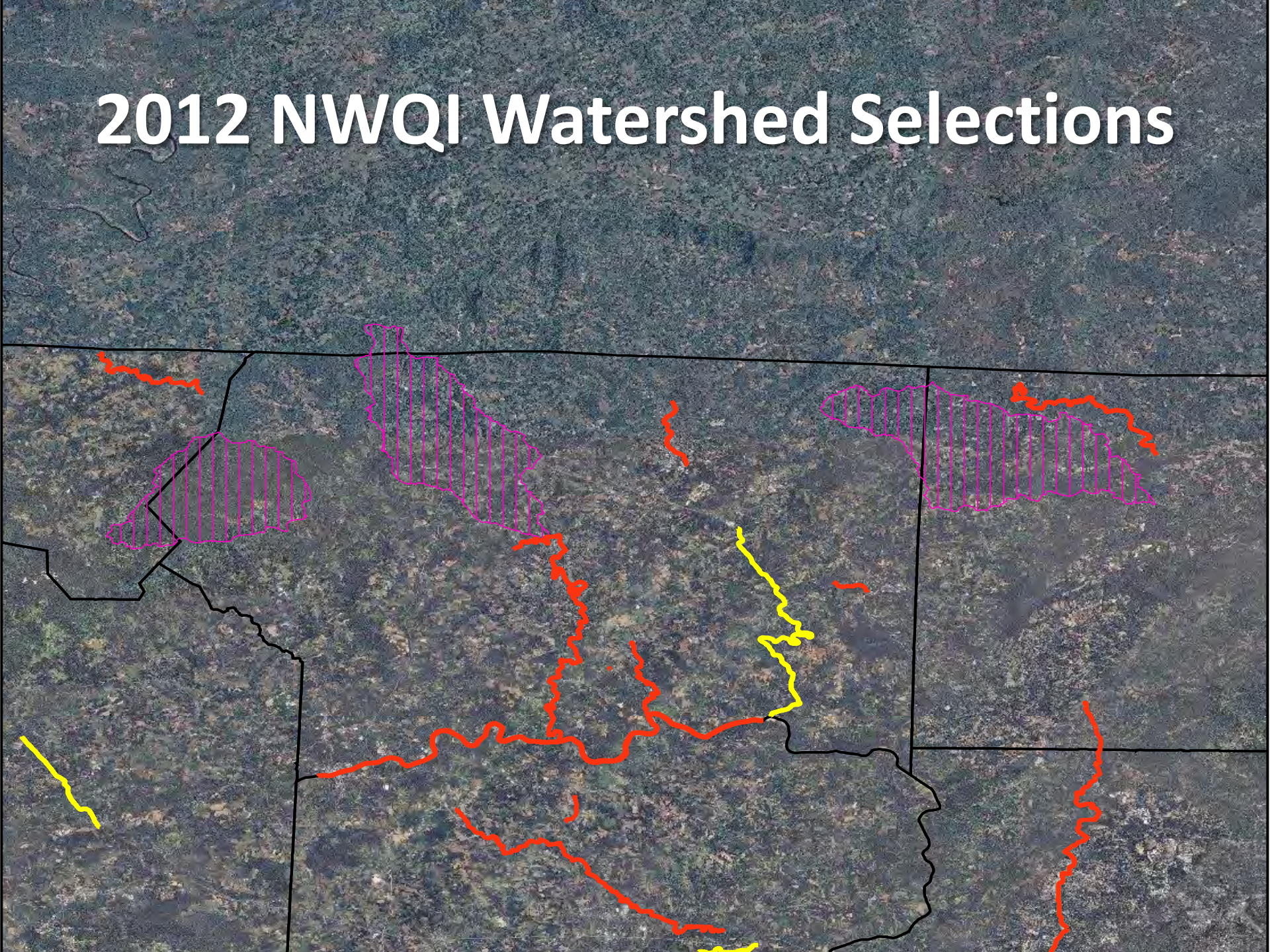
Discussion Maps

GIS Layers Provided by NC Partners

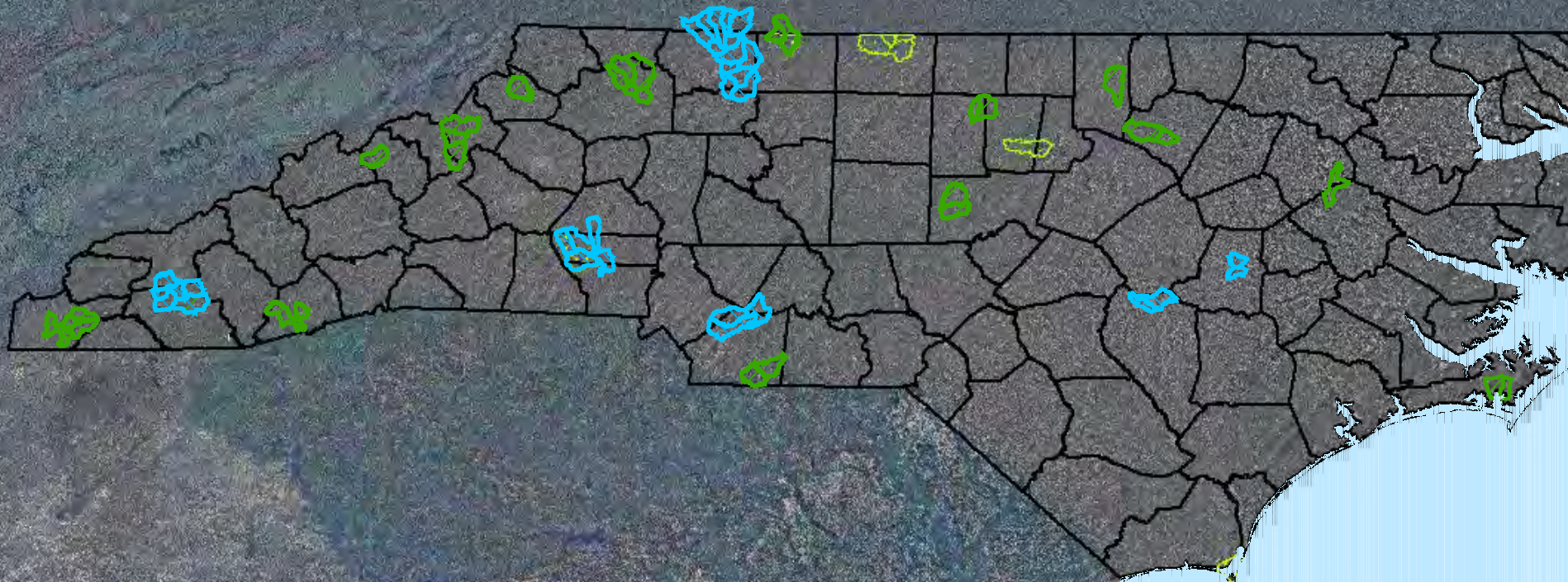
NC Impaired Waters



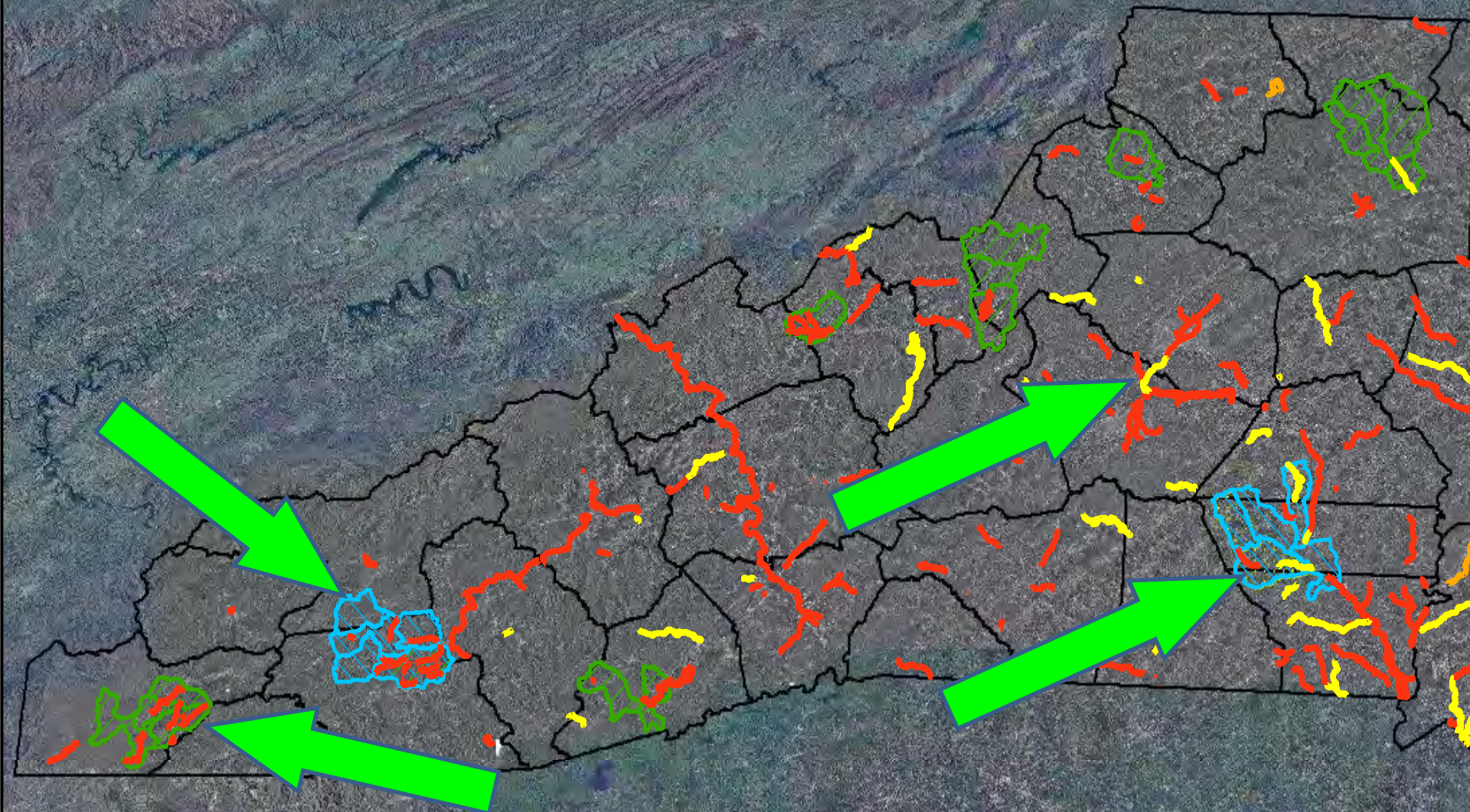
2012 NWQI Watershed Selections



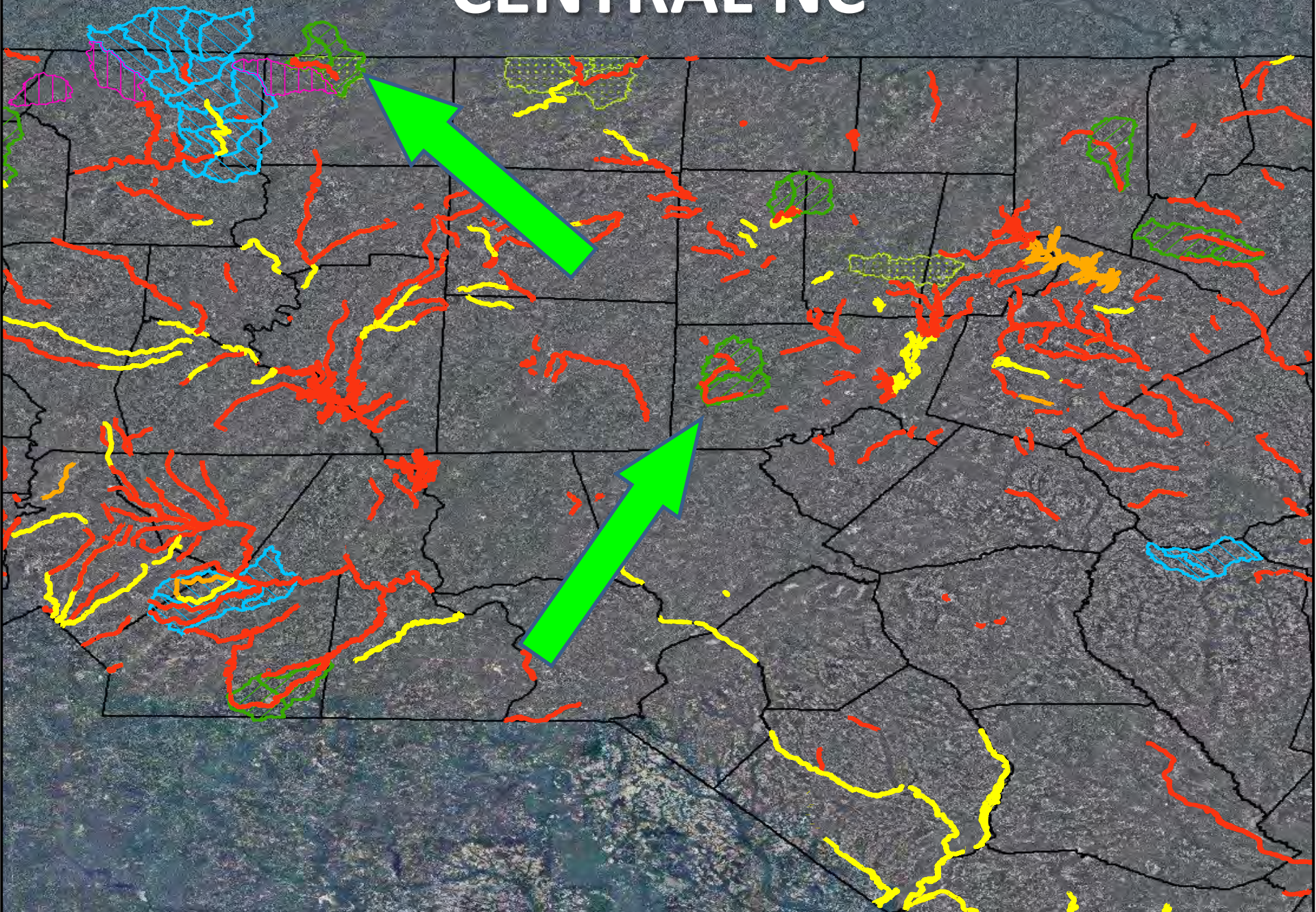
DWQ, EEP & DENR WRIT Priorities



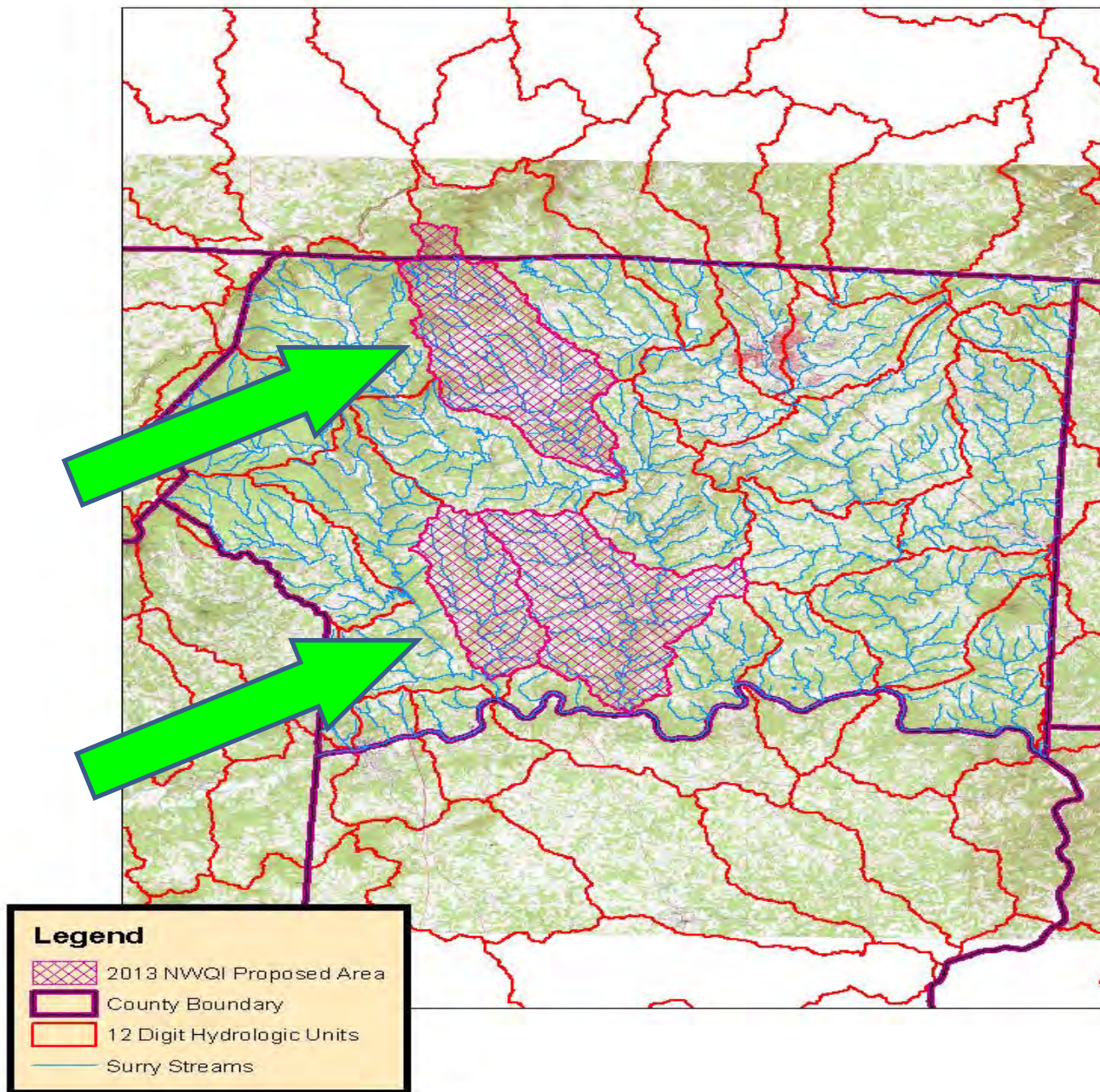
WESTERN NORTH CAROLINA



CENTRAL NC



Potential NWQ Initiative - 2013

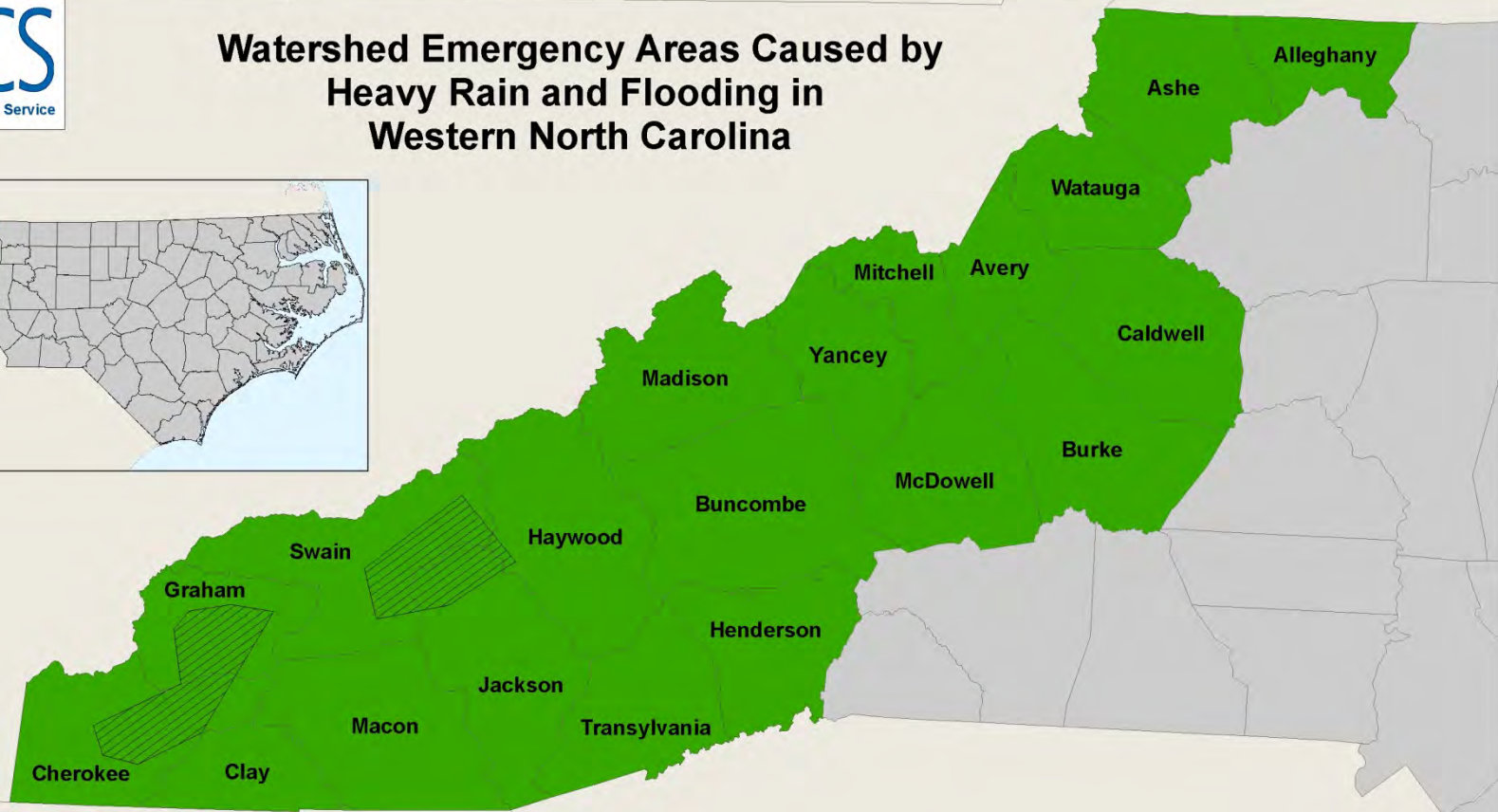
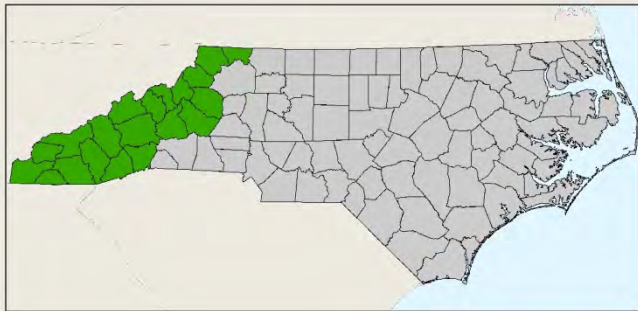


EMERGENCY WATERSHED PROTECTION PROGRAM

Presentation to NRCS
North Carolina State Technical
Committee
March 1, 2013



Watershed Emergency Areas Caused by Heavy Rain and Flooding in Western North Carolina

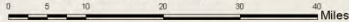


Map Source: NRCS North Carolina
Raleigh State Office, Ecological Sciences Section
February, 21st, 2013

Purpose: This map was developed to illustrate locations of counties and Tribal lands where heavy rain and flooding in January 2013 created watershed emergencies in Western North Carolina. In the affected area, the Emergency Watershed Protection program may be available to state and local government project sponsors, The Eastern Band of Cherokee Indians and the U.S. Forest Service.

Data Source: USDA NRCS basemap layers
Map created by R. D. Abell, Jr., Cartographic Technician

Map Location:
Z:\geodata\PROJECT_DATA\NRCS\Basemaps



1:447,823

Map Projection: Albers Equal Area
Datum: NAD27

Legend

- Affected Counties
- Eastern Band of Cherokee Indians

USDA is an equal opportunity provider and employer.





-83.24262, 35.397725

Approximate Path of
January 16(?), 2013
Debris Flow

-83.24384, 35.39268



Structures and
Residences Near
Stream



1,000 Feet

U.S. 23/74



January 17, 2013 photograph of the main debris deposit on the slope above the stream.



Mount Noble (BIA) Road; Concee and Jeff Gertie







TRANSYLVANIA COUNTY - SKYE DRIVE SLIDE - BEFORE



**TRANSYLVANIA COUNTY - SKYE DRIVE
SLIDE - AFTER**



MACON CO.



WATAUGA CO.



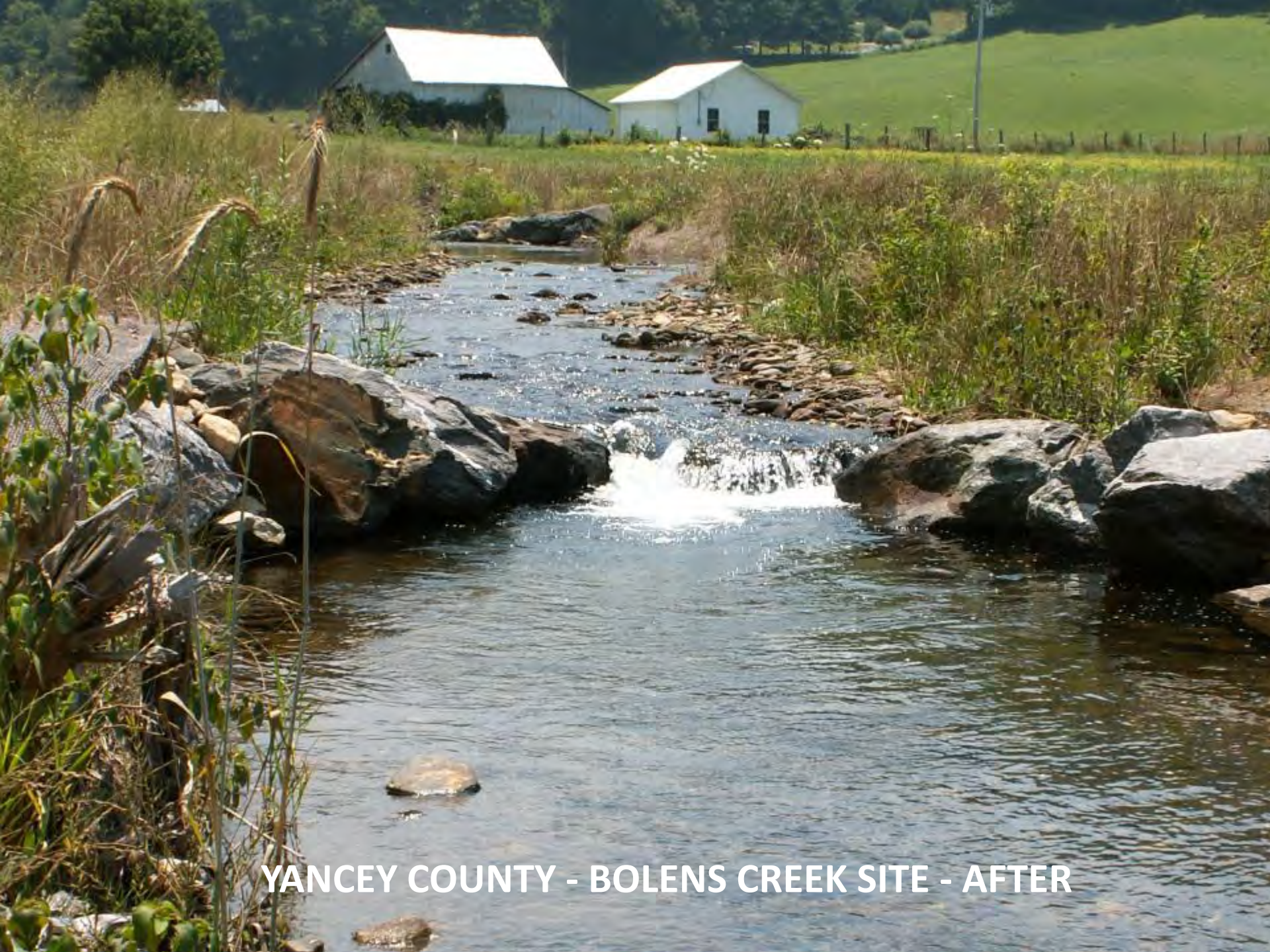
BURKE CO.



**BURKE CO. JOHNS
RIVER SITE**



YANCEY COUNTY - BOLENS CREEK SITE - BEFORE



YANCEY COUNTY - BOLENS CREEK SITE - AFTER