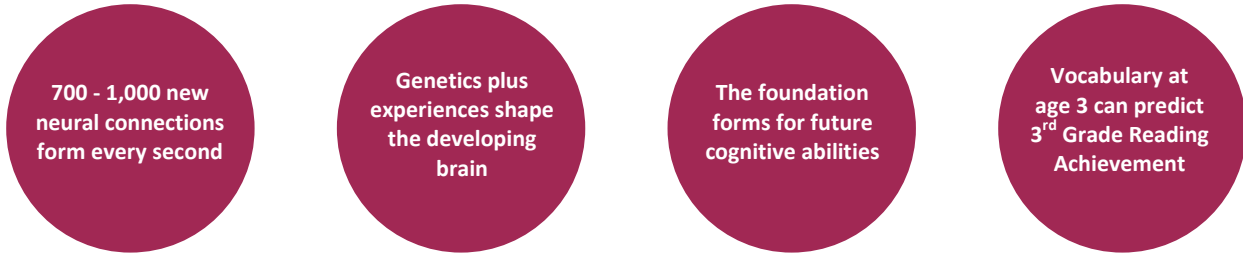


SOUTH DAKOTA

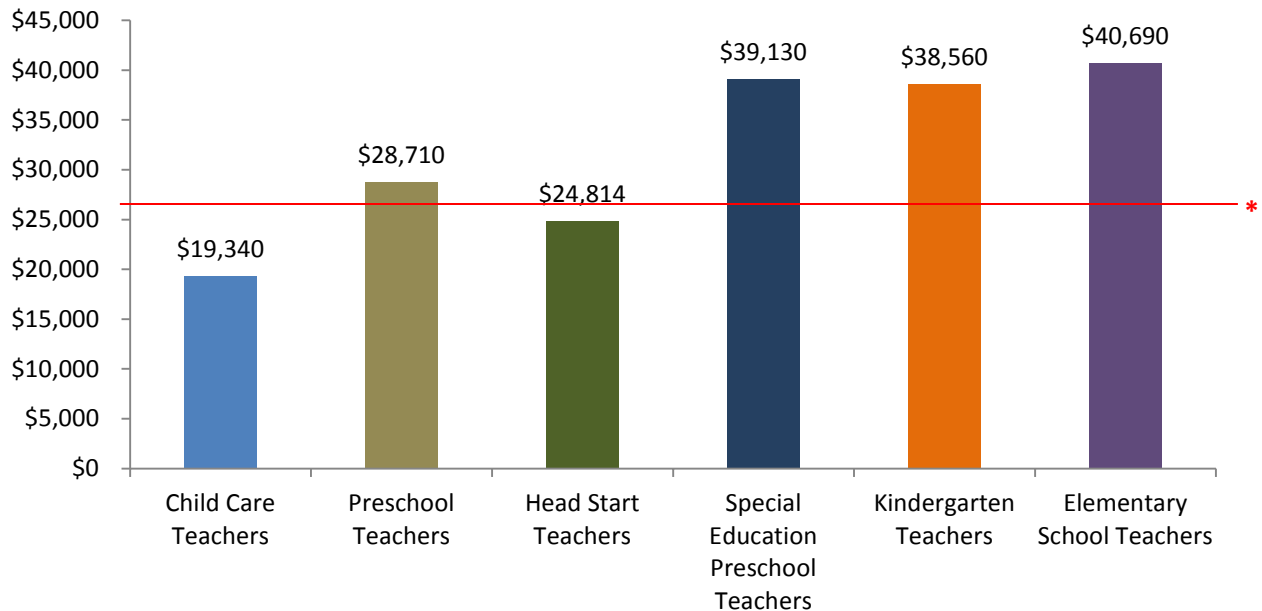
Access to High Quality Early Learning Matters!

Research shows that during the earliest years of a child's life:



High Quality Programs Depend on a Quality Workforce Low Wages Undermine Quality

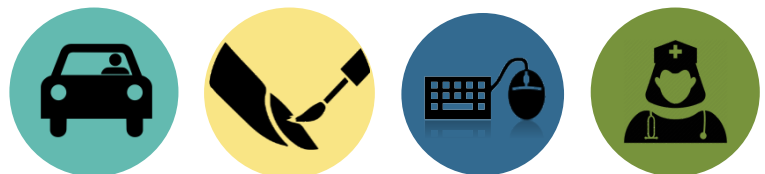
South Dakota Median Annual Workforce Earnings



South Dakota Demographics

- 71,314** Children Under Age 6
- 35,908** Children Under Age 6 Below 200% of Poverty
- 74.6%** Children Under Age 6 Living in Households with All Parents Working
- 44.6%** Families Led by a Single Mother with Children Under Age 5 Living in Poverty
- 22.7%** Children Under Age 5 Living in Poverty

South Dakota Median Annual Wages for Other Occupations



Parking Lot Attendants
\$21,940

Manicurist & Pedicurist
\$29,110

Word Processors/Typists
\$24,050[†]

Nurses
\$53,420

[†] Annual wages are from the Bureau of Labor Statistics (May 2015). SD word processors/typists data was not available for 2015; 2014 BLS wage data is reflected instead.

Source: U.S. Census Bureau, ACS 1 Year data (2014); U.S. Bureau of Labor Statistics, Occupational Employment Statistics (2015); Head Start Program Information Report (2015).

