

Bureau of Land Management
Coos Bay District
Planning Update

Fall 2008

Public Lands USA:
Use, Share and Appreciate

Coos Bay District BLM Planning Update



Fall 2008

Dear Citizen:

The *Planning Update* is published to provide current information about ongoing and future projects planned by the Coos Bay District of the Bureau of Land Management. It is our intent to increase the public's awareness of BLM activities and to seek ideas and comments from those who may be affected by our resource management programs. Your ideas, comments, and participation help us make informed decisions and implement better projects. Please send written comments, including the specific project and field office name, during that project's public comment period to: 1300 Airport Lane, North Bend, OR 97459.

A copy of the *Planning Update* is available for viewing on the Coos Bay District's web page, at: <http://www.blm.gov/or/districts/coosbay/plans/index.php>

Projects started and completed between editions of *Planning Update* have gone through the full analysis process. Legal notices published in *The World* newspaper of Coos Bay provide details on public involvement and the public comment process for these projects.

Special Notice: To better conserve resources and begin transitioning to a new national BLM planning process, we are changing to electronic delivery of the *Planning Update*. In the future, we will be sending an email notification and link to the update so that you may access it from our website at the time of publication. A paper copy will be available at libraries in Coos and Curry County, the Reedsport branch of the Douglas County library, and the Coos Bay District BLM Office.

If you wish to help us conserve resources and receive this notice electronically, please provide our office with your email address by sending an email to: or120@blm.gov. If you wish to continue receiving a paper update, please confirm your address in written correspondence to our office (address below), or by emailing us. If you currently receive a paper update and choose not to reply, we will remove your name from the distribution list. Please write soon as this change will be effective with the next *Planning Update* in January 2009.

Thank you for your continued interest in public land management

Sincerely,
/s/ **Mark E. Johnson**

Mark E. Johnson
District Manager

USDI - Bureau of Land Management
Coos Bay District Office
1300 Airport Lane
North Bend OR 97459
OR_CoosBay_Mail@blm.gov
(541)756-0100

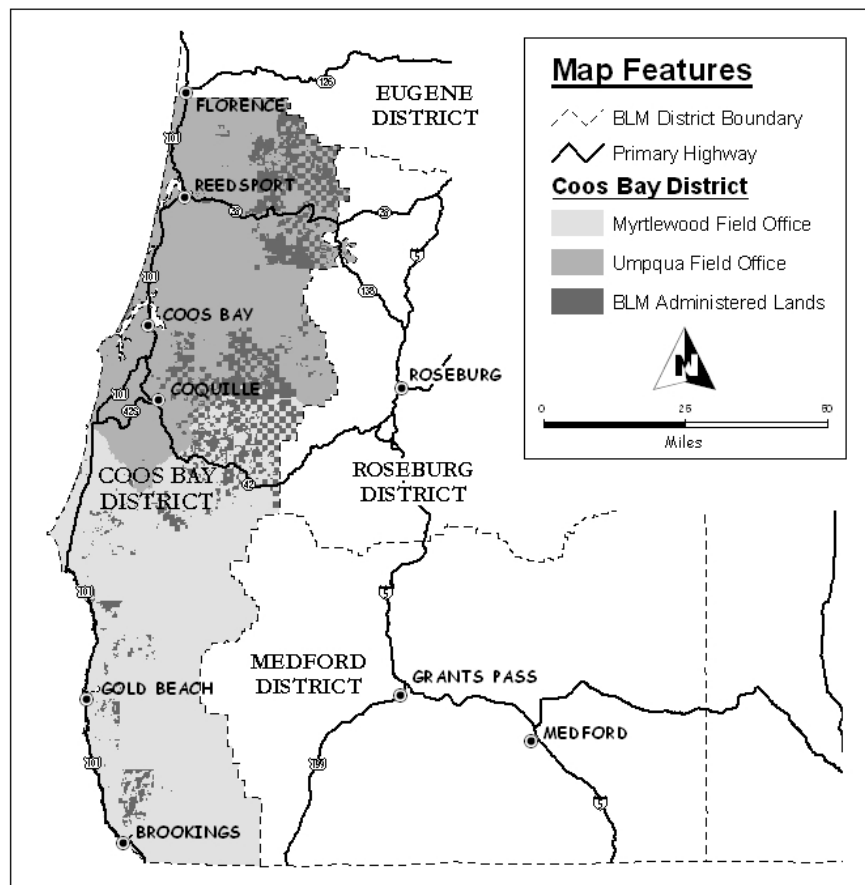
ON-GOING PROJECT UPDATES AND NEW PROJECTS

Pages five through nine of the *Planning Update* summarize projects on the Coos Bay District. Some projects were previously listed and are still in the process of being completed, others are in the process of being implemented. Projects that have been dropped from consideration or that have a signed decision will not be listed in future issues.

This publication allows you to see a brief explanation of ongoing and proposed projects and you can decide if you wish additional information about any of them. If you previously requested to be put on a mailing list for specific activities, we have that on file and will continue to keep you informed.

The contact people listed with the projects are able to answer questions and provide additional details. They are interested in information you wish to share concerning any of the projects or project areas. These people may be contacted either by mail, or by telephoning our office at 541-756-0100.

Map of Coos Bay District



RESOURCE MANAGEMENT PLAN REVISION

As most of you may be aware, the Bureau of Land Management (BLM) has been working on the revision of its resource management plans (RMPs) for the Coos Bay, Salem, Eugene, Roseburg, Medford Districts and the Klamath Falls Resource Area of the Lakeview District. A Final Environmental Impact Statement was released October 9, 2008, and a Decision on the Plan is anticipated by mid-December. Information about this planning process is available at: <http://www.blm.gov/or/plans/wopr/>.

Categorical Exclusions

Certain activities within the BLM have been categorically excluded from preparation of an Environmental Assessment (EA) or Environmental Impact Statement (EIS). The purpose of a categorical exclusion is to eliminate the need for unnecessary paperwork under NEPA. Specifically, Council of Environmental Quality (CEQ) regulations for the National Environmental Policy Act (NEPA) at 40 CFR §1508.4 state that:

“‘Categorical exclusion’ means a category of actions which do not individually or cumulatively have a significant effect on the human environment and which have been found to have no such effect in procedures adopted by a Federal agency in implementation of these regulations (Sec. 1507.3) and for which, therefore, neither an environmental assessment nor an environmental impact statement is required...Any procedures under this section shall provide for extraordinary circumstances in which a normally excluded action may have a significant environmental effect.”

In implementation of the NEPA regulations, the BLM has developed categorical exclusions for certain silvicultural activities, such as reforestation, pre-commercial treatments, brush control, sample tree falling, and salvage, commercial thinning, and hazardous fuels reduction of limited acres. In developing categorical exclusions, the BLM demonstrated through rulemaking procedures how these actions do not typically result in significant environmental effects and set forth the methodology and criteria used to define the categories of actions. These rulemaking procedures included extensive public involvement and input, and CEQ review, regarding appropriate limits on the use of the categorical exclusion to assure that any categorically excluded action would remain within the effects of actions covered in the analysis for the rulemaking.

As such, in deciding whether to proceed with such actions, the BLM will review their particular conditions to ensure that no extraordinary circumstances exist, as listed in the Department of the Interior’s NEPA Manual at 516 DM 2, Appendix 2 that would preclude the use of a categorical exclusion. The Coos Bay District maintains an on-site NEPA register that lists ongoing actions, and seeks information from the public as to whether extraordinary circumstances exist for any of these ongoing actions that are categorically excluded. An “extraordinary” circumstance is one that could have significant environmental effects beyond the “ordinary” circumstances already described and considered as applicable to the excluded actions in the rulemaking procedure. These categorically excluded actions, by regulation, do not require the documentation necessary for an EA or EIS. The public was also provided a formal opportunity to participate in the agency’s review and approval of these categorically excluded activities. Given this context, the BLM may choose to proceed with these actions as part of the ordinary course of business in managing forest land with the posting of a notice of decision on the District internet site. This notice would advise the public of the formal administrative review process for these individual actions available under 43 CFR §4.450. Depending on circumstances, however, the BLM may invoke, by publishing a notice in a local newspaper of record, the administrative review process under 43 CFR §5003 for certain individual forest management actions.

Below is a list of Categorical Exclusions initiated or completed for use in the upcoming fiscal year. For further information, please contact Steven Fowler.

FY 2009 Annual Road Maintenance

DOI-BLM-OR-120-2009-0001-CX

Projects covered under this CX include routine: and annual, seasonal, monthly, weekly, and daily road maintenance activities. Also, emergency repairs needed to keep the road system functional and drainage systems operational. This project is in various locations throughout the District.

FY 2009 Annual Sale of Special Forest Products

DOI-BLM-OR-120-2009-0002-CX

Projects covered under this CX include the harvest of a variety of special forest products. Products include, but are not limited to: firewood, posts & poles, chips, cedar wood products, transplant stock, cut sticks, moss, beargrass, boughs, Christmas trees, other floral greenery, cones, burls, bark, roots, pitch, and fungi. These projects are in various locations throughout the District.

FY 2009 Annual Tailhold – Guyline requests

DOI-BLM-OR-120-2009-0003-CX

Projects covered under this CX are in response to requests from adjacent landowners for tailhold and/or guyline trees to facilitate harvest operations on private lands. These actions occur in various locations throughout the District.

FY 2009 Annual Fire Line Construction

DOI-BLM-OR-120-2009-0004-CX

Projects covered under this CX include the construction of fire lines on BLM lands by adjacent intermingled land owners needed for control in prescribed burning operations. These projects are in various locations throughout the District.

FY 2009 Annual Roadside Salvage & Hazard Tree Removal

DOI-BLM-OR-120-2009-0005-CX

Projects covered under this CX include the removal of individual or small groups of trees adjacent to roads which are dead, diseased, injured, blown-down, or constitute a safety hazard in accordance with District Instruction Memorandum OR120-2007-03. Removal is limited to 50MBF per sale. These projects are in various locations throughout the District.

Sudden Oak Death Treatment

DOI-BLM-OR-128-2009-0001-CX

Multiple projects involve treating up to 250 acres infected with Sudden Oak Death disease. These projects are located primarily in southern Curry County.

Coos Bay District Sample Tree Falling

DOI-BLM-OR-120-2009-0006-CX

Project includes felling, bucking, and scaling of sample trees to ensure accuracy of timber cruising for multiple timber sales anticipated to be sold FY 2009 and 2010. Trees designated for falling would be limited to those designated for removal in the timber harvest area. The number of trees to be felled would not exceed one tree per acre. These projects are in various locations throughout the District.

Umpqua Field Office

TIMBER MANAGEMENT



Fairview Commercial Thinning and Regeneration Harvest EA EA OR125-08-06

Description: This project proposes to treat approximately 900 acres of regeneration harvests and 6,000 acres of commercial thinning.

Location: T26S, R13W Sections 11, 13 and T26S, R12W, Sections 25, 26, 27, 35, 36 and T27S, R12W, Sections 1, 2, 3, 4, 9, 11, 13, 15, 17, 23, 25, 27, 33 and T27S, R11W, Sections 17, 19, 20 and 21, Willamette Meridian, Coos County, Oregon

Planning Status: Scoping – Winter/Spring 2009.
Analysis – 2009.

Decision Date: Decision Documentations - starting 2010.

Implementation: Timber Sales are planned for 2010 through 2014.

For further information, please contact Jeremy Hunt.

North Soup – Blue Retro Density Management Study EA EA OR125-08-01

Description: The project proposes to treat approximately 225 acres of density management thinning. This project would be the second phase of a research study into the effects of alternate forest density management treatments in young stands to develop late-successional habitat attributes and to assess the combined effects of density management and alternative buffer widths on aquatic and riparian systems.

Location: T23S, R9W, Section 16 and T26S, R12W, Sections, 25, 26, 35, & 36, Willamette Meridian.

Planning Status: Scoping – complete.
Analysis – ongoing.

Decision Date: Decision Documentations - starting 2009.

Implementation: Two timber sales are planned for FY 2009.

For further information, please contact Rick Schultz.

The following EA is complete and projects will continue to be implemented over the next several years.

Umpqua River – Sawyer Rapids DM/CT EA EA OR125-05-01

Description: The project proposes to treat approximately 10,000 acres of commercial and density management thinning, and hardwood conversion in the Matrix and Riparian Reserve land-use allocation.

Location: T21S, R9W, Sections 31,32, & 33, T22S, R9W, Sections 3, 4, 9, 10, 15, 25, & 35, T21S, R8W, Sections 23, 24, 25, 26, 27, 29, 33, & 35, T22S R 8W, 1, 3, 5, 7, 9, 11, 17, 18, 19, 25, 27, 29, 31, 32, & 33, T21S, R7W, 19, 20, 29, 30, & 31, T23S, R8W, Sections 5, 6, & 7, Willamette Meridian.

Planning Status: Scoping – complete.
Analysis – complete.
Public review and comment - complete.

Decision Date: Decision Documentations - starting 2008.

Implementation: Multiple timber sales are planned for FY 2008 through 2011.

For further information, please contact Paul Fontaine.

REALTY ACTIONS

North Spit Land Disposal #2

EA OR125-06-02

Description: The project, proposed by the International Port of Coos Bay, proposes the disposal of lands zoned for industrial use on the North Spit.

Location: T 25S, R13W, Willamette Meridian.

Planning Status: - On hold until further notice.

For further information, please contact Linda Petterson.

Other ACTIONS

Spruce Reach Culvert Project



EA OR120-08-05

Description: The project proposes to install a culvert in an unnamed tributary to Hinsdale Slough to allow access to Spruce Reach Island from Highway 38.

Location: T21S, R11W, Sec. 32 and 33, Willamette Meridian.

Planning Status: Scoping - complete.
Analysis - Fall 2008
Decision Date - Winter 2008

Implementation: Spring 2009

For further information, please contact Nancy Zepf.

Coos Basin Oil and Gas Lease EA

EA OR120-07-04

Description: The EA is intended to provide additional analysis specific to possible Coal Bed Natural Gas development.

Location: BLM managed parcels within T24S, R12W; T23S, R13W; T24S, R13W; T25S, R14W; T25S, R13W; T25S, R12W; T26S, R14W; T26S, R13W; T26S, R12; T27S, R14W; T27S, R13W; T27S, R12W; T28S, R15W; T28S, R14W; T28S, R12W; T29S, R15W; T29S, R14W; T29S, R13W; T29S, R12W.

Planning Status: Scoping – Spring/Summer 2009.
Analysis – Fall/Winter 2009

Decision Date: To be determined.

For further information, please contact Timothy Barnes.

Myrtlewood Field Office

TIMBER MANAGEMENT

East Fork Coquille Regen Harvest EA DOI-BLM-OR-128-2009-0003-EA

Description: The project proposes 268 acres of regeneration harvest, 40 acres of hardwood conversion, and 92 acres of density management thinning in the East Fork Coquille watershed as previously analyzed in EA OR128-03-17. This analysis would determine whether new circumstances or information change the original determination of a finding of no significant impact.

Location: T28S, R10W, Sections 17 and 23; T28S, R11W, Sections 16 and 27; T29S, R11W, Section 5, Willamette Meridian.

Planning Status: Scoping –Fall 2008.
Analysis – following scoping.

Decision Date: Decision Documentation – Spring 2009.

Implementation: Timber sales planned for FY 2009 through 2010.

For further information, please contact Aimee Hoefs.

Edson Regen Harvest EA

EA OR 128-08-03

Description: The project proposes to regeneration harvest 1200 acres in the Floras Creek – Sixes River area.

Location: T30S, R14W, Section 12; T31S, R12W, Section 19; T31S, R13W, Sections 6, 17, 20, 25, 33, and 34; T31S, R14W, Sections 1, 7, 9, 10, 14, 15, 17, 18, 20, 22, 23, 24, 26, 28, 29, 30, 31, 32, 33, and 34; T32S, R15W, Sections 4 and 24, Willamette Meridian.

Planning Status: Scoping –Winter 2009.
Analysis – following scoping.

Decision Date: Decision Documentation – Fall 2009.

Implementation: Timber sales planned for FY 2010 through 2012.

For further information, please contact Aimee Hoefs.

King Myrtle EA

EA OR 128-08-02

Description: The project proposes to treat approximately 700 acres of commercial and density management thinning in the Matrix and Riparian Reserve land-use allocation.

Location: Multiple sections within T29S,R10W; T29S, R11W; T29S, R12W; T30S, R10W; and T30S, R11W.

Planning Status: Scoping –complete.
Analysis – ongoing.

Decision Date: Decision Documentation – Spring 2009.

Implementation: Timber sales planned for FY 2009.

For further information, please contact Aimee Hoefs.

Remote Control EA

EA OR128-06-06

Description: The project proposes to regeneration harvest approximately 193 acres in the Matrix land-use allocation.

Location: T29S, R10W, Sections 9 and 26, Willamette Meridian.

Planning Status: Analysis – ongoing.

Decision Date: Decision Documentation – anticipated spring 2009.

Implementation: Timber sales planned for FY 2009.

For further information, please contact Aimee Hoefs.

The following EAs are complete and projects will continue to be implemented over the next several years.

Slater Rocks CT EA

EA OR 128-07-01

Description: The project proposes to treat approximately 1,500 acres of commercial and density management thinning in the Matrix and Riparian Reserve land-use allocation.

Location: T29S, R9W, Sections 9, 17, 21, 29, 31, and 33; T29S, R10W, Section 35; T30S, R9W., Sections 5, 7, 17, 21, and 33; T30S, R10W, Sections 9, 13, and 15, Willamette Meridian.

Planning Status: Scoping – complete.
Analysis – complete.

Decision Date: Decision Documentation – expected spring 2008.

Implementation: Timber sales planned for FY 2008 – 2009.

For further information, please contact Aimee Hoefs.

Edson Thin EA

EA OR 128-07-02

Description: The project proposes to treat approximately 490 acres of commercial and density management thinning in the Matrix and Riparian Reserve land-use allocation.

Location: T31S, R14W, Sections 14, 15, 22, 23, 24, 25, 26, and 35; T32S, R14W, Sections 11 and 14, Willamette Meridian.

Planning Status: Scoping – complete.
Analysis – complete.

Decision Date: Decision Documentation – August 2008.

Implementation: Timber sale may be reoffered in FY 2009.

For further information, please contact Chris Schumacher.

Brummit Creek Restoration EA

EA OR128-03-24

Description: The project proposes to produce approximately 2500 acres of density management, hardwood conversion treatments, habitat improvements, and road decommissioning in the Late-Successional Reserve.

Location: T27S, R9W; T27S, R10W; T28S, R9W; T28S, 10W.

Planning Status: Complete.

Implementation: Possible restoration projects dependant upon funding.

For further information, please contact Aimee Hoefs.

HABITAT RESTORATION

New River Foredune Management EA

EA OR128-06-01

Previously titled; *Western Snowy Plover Habitat Restoration Area EA for New River ACEC*

Description: The project plans for long-term maintenance of plover habitat, reduces sand movement into the New River stream system, and manages protection of other resources and values.

Location: New River ACEC; T30S, R15W, Sections 3, 10, 15, 21, 22, and 28, Willamette Meridian.

Planning Status: Scoping - complete.
Analysis – ongoing.

Decision Date: Decision Record – pending consultation with US Fish & Wildlife Service; expected Summer 2009.

Implementation: Expected 2009.

For further information, please contact Kip Wright.

Abbreviations and Definitions

ACEC/RNA – Area of Critical Environmental Concern/Research Natural Area.

CX or Categorical Exclusion - Actions which do not have significant effects on the environment and for which an Environmental Analysis (EA) or an Environmental Impact Statement (EIS) is not required.

CT - Commercial Thinning - The removal of merchantable trees from an even-aged stand to encourage growth of the remaining trees. The term is applied to harvest within Matrix lands and may include some Riparian Reserve.

DMT - Density Management - Thinning of trees for the primary purpose of widening their spacing so that growth of remaining trees can be maintained. Density management harvest can also be used to improve forest health, open the forest canopy, or accelerate the attainment of old growth characteristics if maintenance or restoration of biological diversity is the objective. The term is applied to harvest within Late Successional Reserves and /or Riparian Reserves.

DNA – Determination of NEPA Adequacy – Documentation of BLM’s internal analysis process that a proposed action conforms to its land use plan and is adequately analyzed in an existing NEPA document.

EA - Environmental Assessment – This is a concise public document that briefly provides evidence and analysis of a proposed Federal action. It is used to determine whether further analysis needs to be done for an Environmental Impact Statement (EIS) or a Finding of No Significant Impact (FONSI).

FONSI – Finding of No Significant Impact - This is a document that briefly presents the reasons why the implementation of an action will not result in “significant” environmental impacts (effects) beyond those already addressed in the Coos Bay District’s *Proposed Resource Management Plan / Environmental Impact Statement* (PRMP/EIS, September 1994).

LSR – Late-Successional Reserves - One of the seven Federal land designations set forth in the Northwest Forest Plan. These reserves will maintain a functional, and interactive late-successional forest ecosystem.

Matrix Lands - One of the seven Federal land designations set forth in the Northwest Forest Plan. Timber harvest contributing to the Allowable Sale Quantity takes place in this area.

NEPA - National Environmental Policy Act - A federal law which sets the systematic interdisciplinary analysis to achieve integrated consideration of physical, biological, economic, and other sciences to provide for an informed decision. The process provides for public participation in the development, review and revision of certain activities on Federal Lands.

Public Involvement / Scoping - An early and open part of environmental analysis that allows interested public and other Federal, state and local agencies the opportunity to provide issues, concerns and opportunities relative to proposed project actions. Scoping is required by regulation for Environmental Impact Statements and is optional for Environmental Assessments.

RMP - Resource Management Plan - A land use plan that governs BLM direction prepared by the BLM in accordance with the Federal Land Policy and Management Act (FLPMA).

Riparian Reserves - Designated riparian areas found outside Late-Successional Reserves.

R/W - Right-of-Way - A permit or an easement that authorizes the use of public lands for specified purposes, such as pipelines, roads, telephone lines, electric lines, reservoirs, and the lands covered by such an easement or permit.