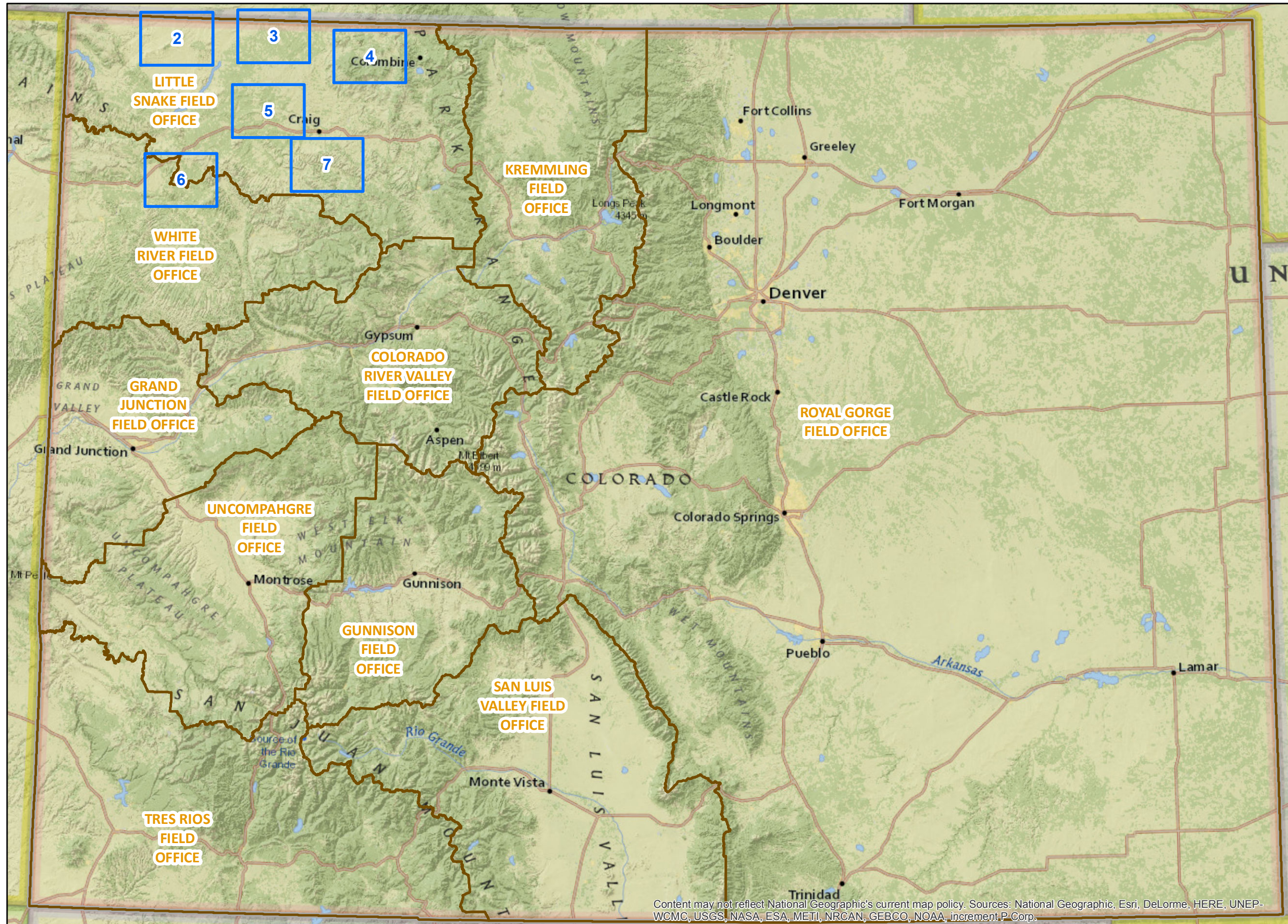


# BLM Competitive Oil and Gas Lease Sale May, 2016



**Legend**

- Detailed Map View Pages
- BLM Field Office Areas
- State Boundary

Please click on the Close Up Map Pages to see more detail.

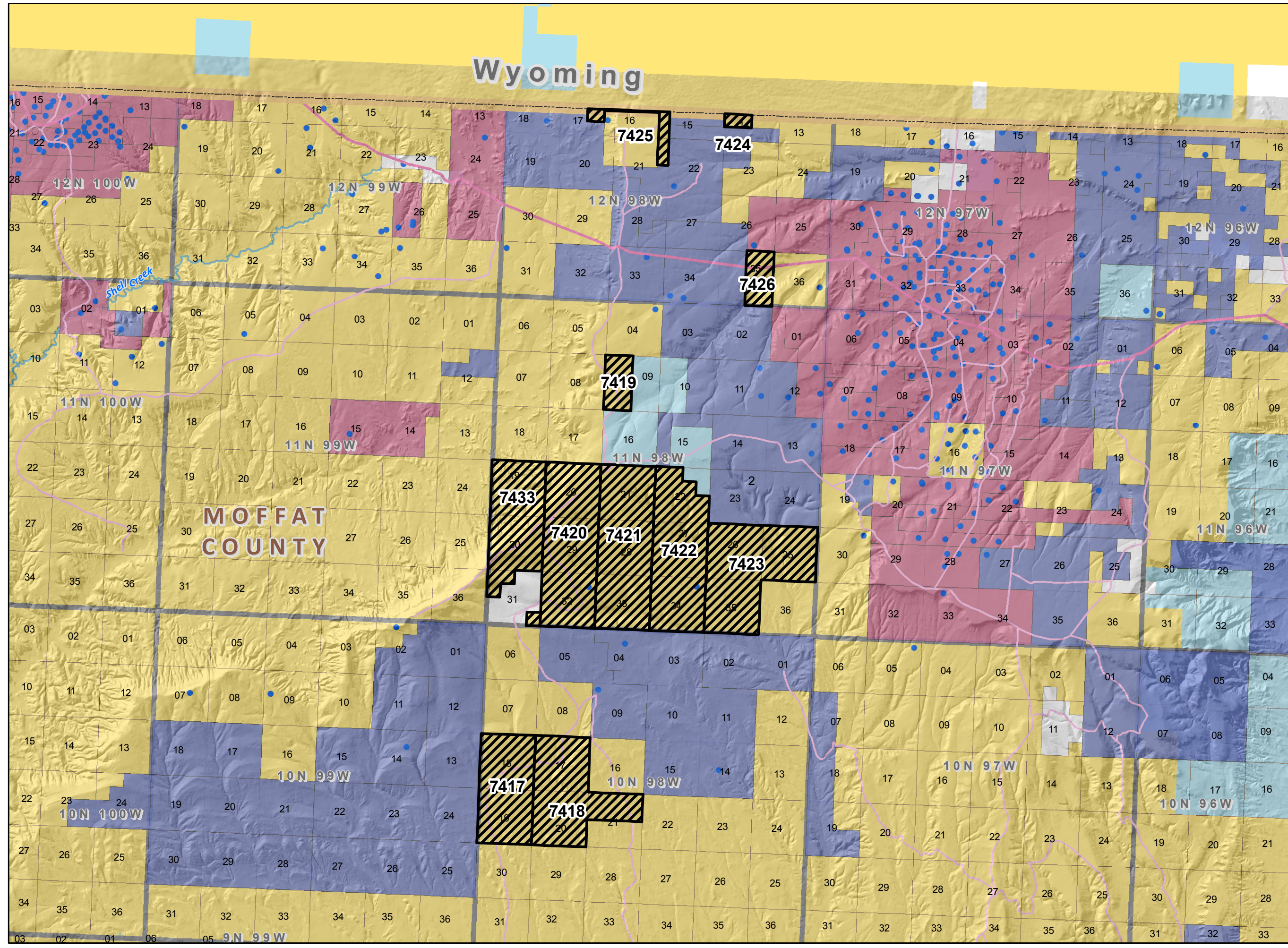
3 / 11

Click on the Page Navigation Tools to return to this Index map on Page 1.

Content may not reflect National Geographic's current map policy. Sources: National Geographic, Esri, DeLorme, HERE, UNEP-WCMC, USGS, NASA, ESA, METI, NRCAN, GEBCO, NOAA, increment, P Corp.



**NOTE TO MAP USERS**  
No warrantee is made by the Bureau of Land Management as to the accuracy, reliability, or completeness of the data layers shown on this map. The official land records should be checked for the current status on any specific tract of land.



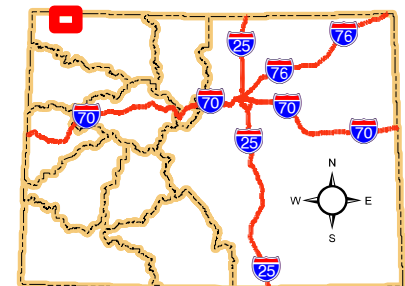
**Legend**

- BLM Field Office Areas Boundaries
- Recommended Oil & Gas Sale Status**
- Deferral
- COGCC Oil and Gas Well Locations
- Oil and Gas Leases**
- Non-Producing Leases
- Producing Leases
- Bureau of Land Management
- Private
- State
- Township & Range
- Sections
- Lakes and Reservoirs
- CDOT Local Roads
- Streams



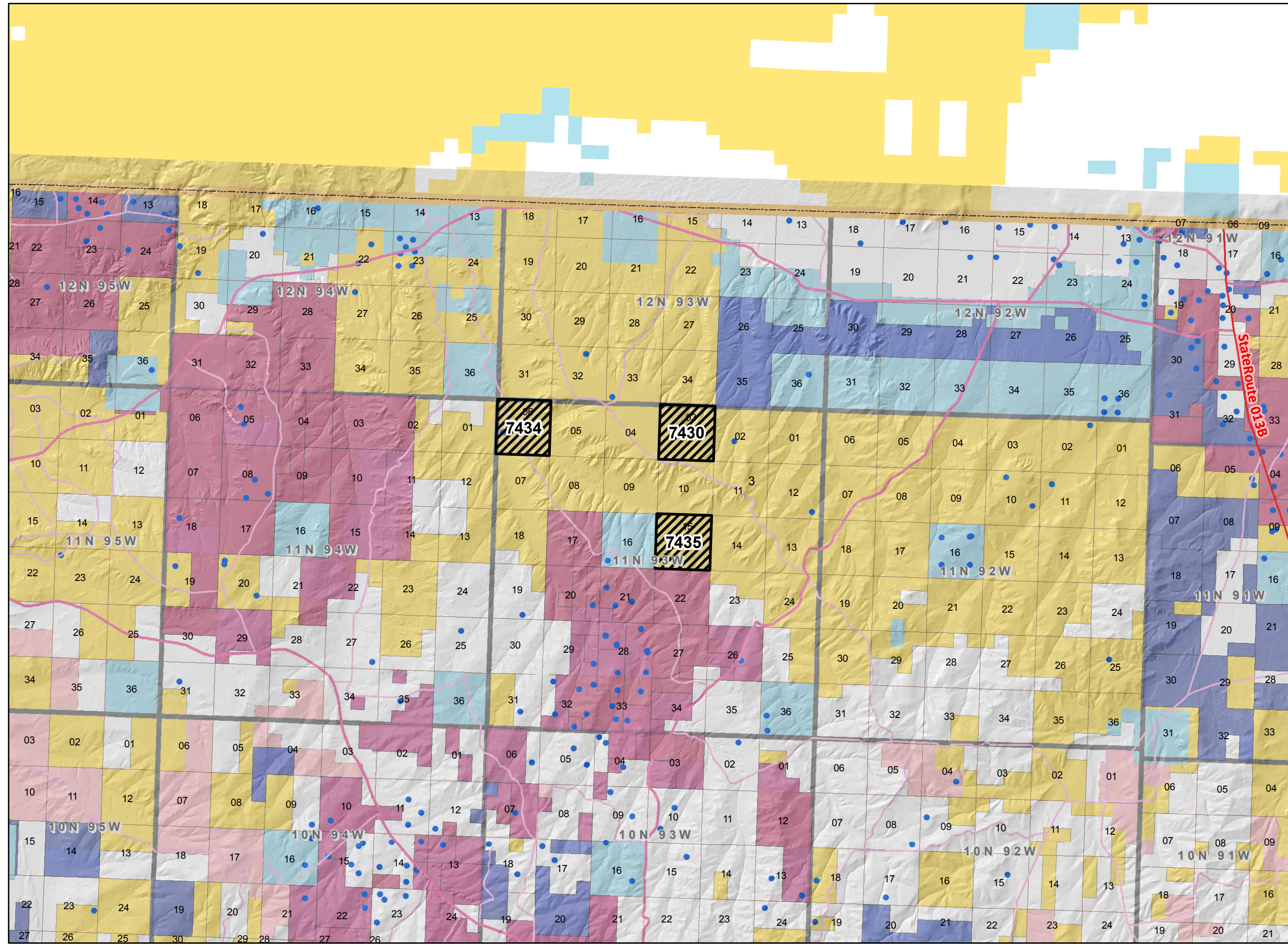
**Map Page Location**  
**Page Number 2**

**LITTLE SNAKE FIELD OFFICE**





**NOTE TO MAP USERS**  
No warrantee is made by the Bureau of Land Management as to the accuracy, reliability, or completeness of the data layers shown on this map. The official land records should be checked for the current status on any specific tract of land.



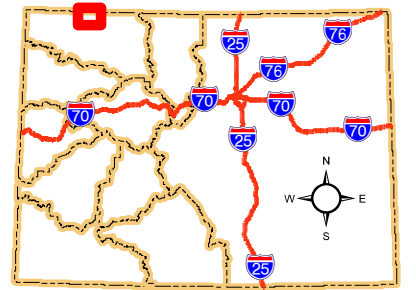
**Legend**

- BLM Field Office Areas Boundaries
- Recommended Oil & Gas Sale Status**
- Deferral
- COGCC Oil and Gas Well Locations
- Oil and Gas Leases**
- Non-Producing Leases
- Producing Leases
- Bureau of Land Management
- Private
- State
- Bankhead-Jones Land Use Lands
- Township & Range
- Sections
- Minor Highways
- CDOT Local Roads



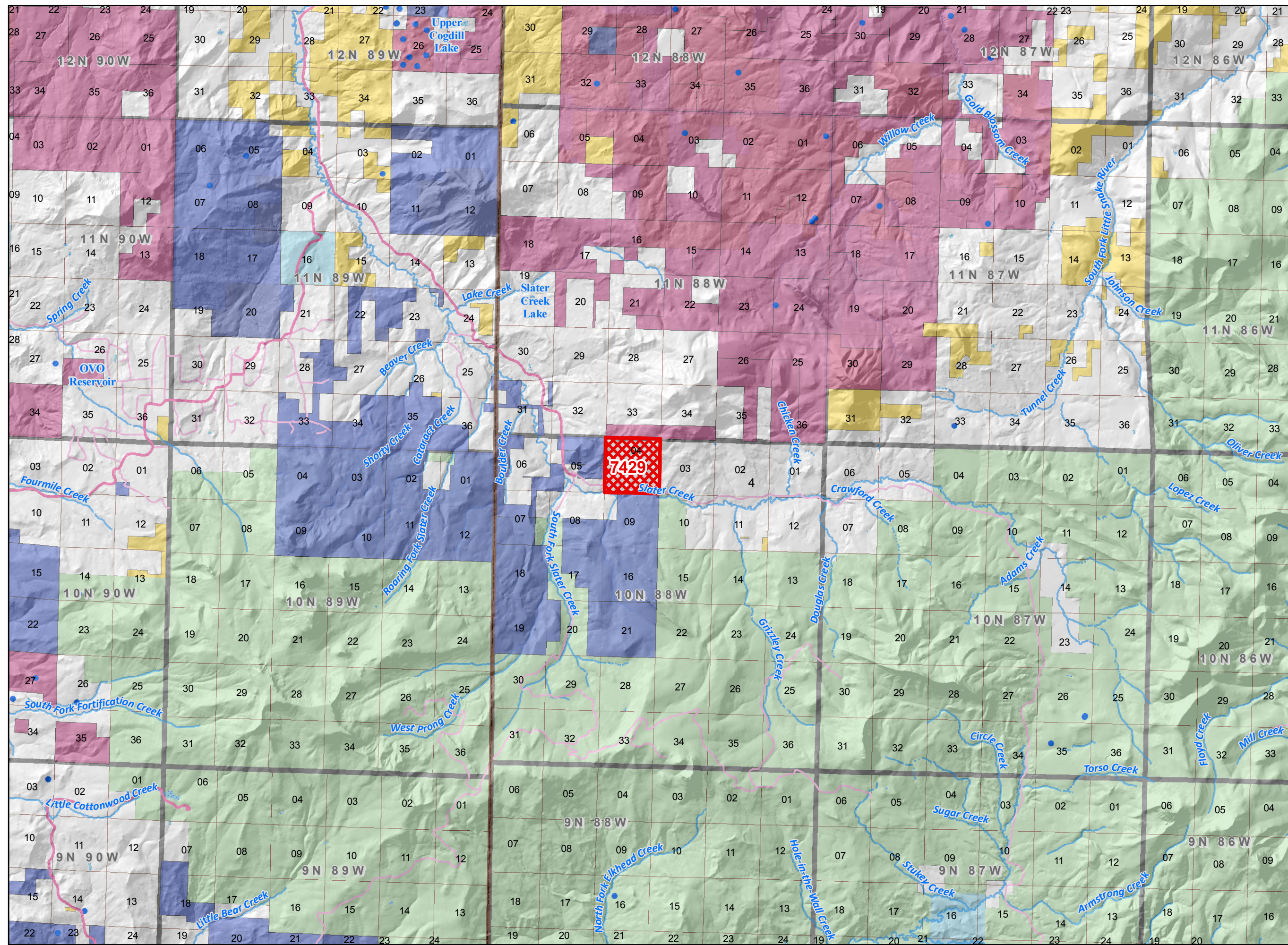
**Map Page Location  
Page Number 3**

**LITTLE SNAKE FIELD OFFICE**



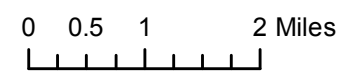


**NOTE TO MAP USERS**  
No warrantee is made by the Bureau of Land Management as to the accuracy, reliability, or completeness of the data layers shown on this map. The official land records should be checked for the current status on any specific tract of land.



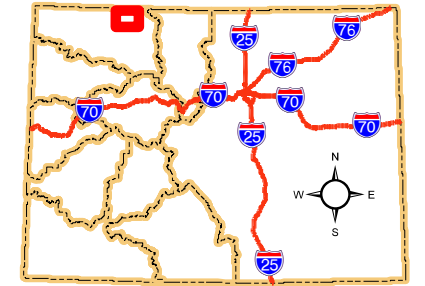
**Legend**

- BLM Field Office Areas Boundaries
- Recommended Oil & Gas Sale Status**
- Sale
- COGCC Oil and Gas Well Locations
- Oil and Gas Leases**
- Non-Producing Leases
- Producing Leases
- Bureau of Land Management
- Private
- State
- US Forest Service
- Township & Range
- Sections
- Lakes and Reservoirs
- CDOT Local Roads
- Streams



**Map Page Location  
Page Number 4**

**LITTLE SNAKE FIELD OFFICE**



**Bureau of Land Management  
Competitive Oil & Gas Lease Sale  
May, 2016**



**NOTE TO MAP USERS**  
No warrantee is made by the Bureau of Land Management as to the accuracy, reliability, or completeness of the data layers shown on this map. The official land records should be checked for the current status on any specific tract of land.



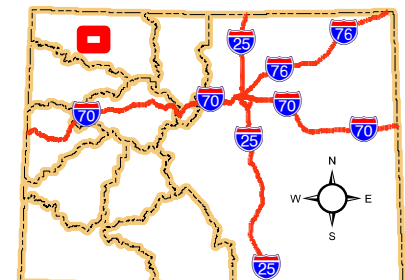
**Legend**

- BLM Field Office Areas Boundaries
- Recommended Oil & Gas Sale Status**
- Deferral
- COGCC Oil and Gas Well Locations
- Oil and Gas Leases**
- Non-Producing Leases
- Producing Leases
- Bureau of Land Management
- Private
- State
- State, County, City; Areas
- Bankhead-Jones Land Use Lands
- Township & Range
- Sections
- Lakes and Reservoirs
- Minor Highways
- CDOT Local Roads
- Streams



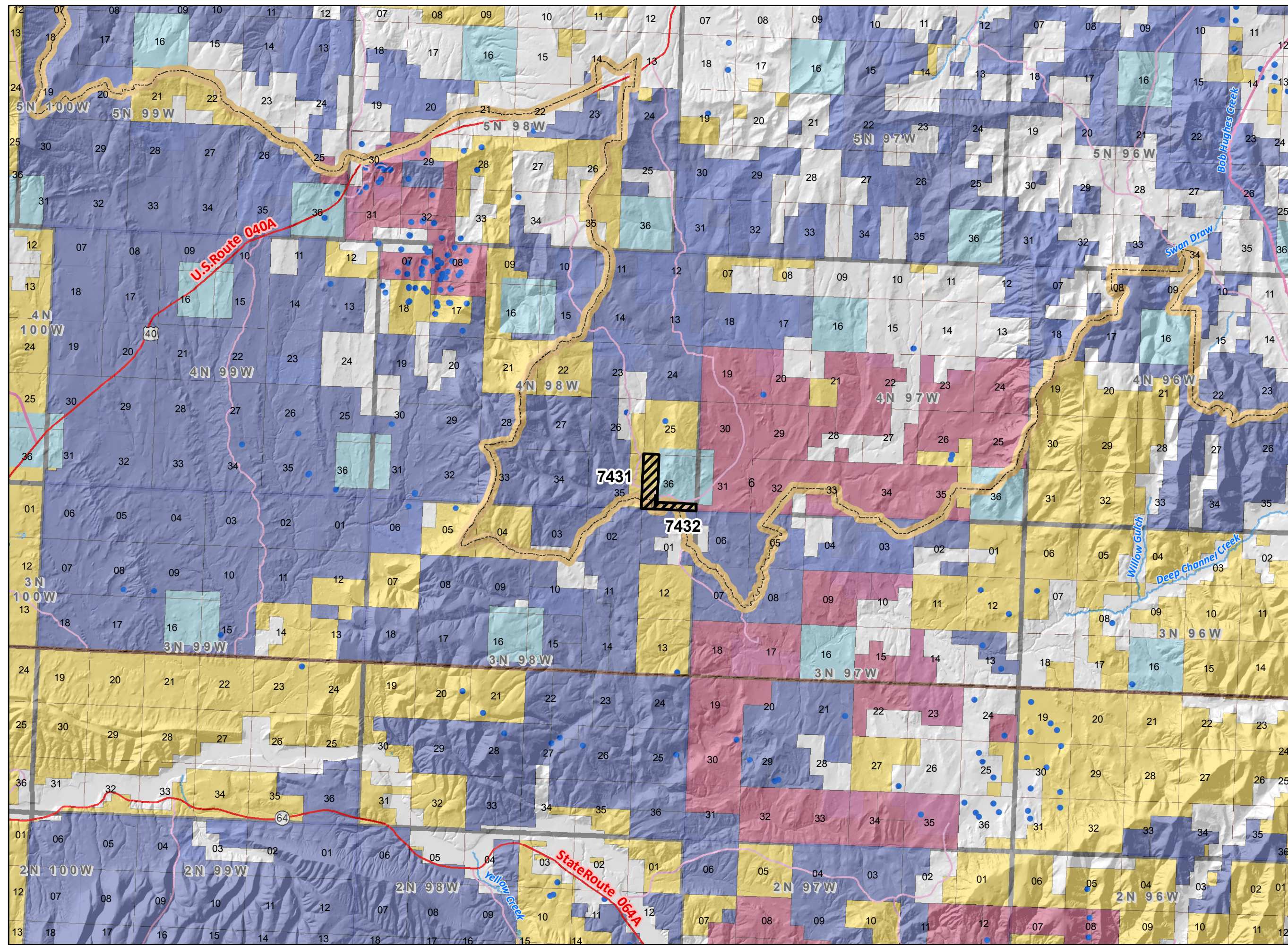
**Map Page Location**  
**Page Number 5**

**LITTLE SNAKE FIELD OFFICE**



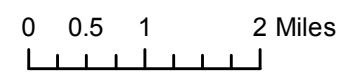


**NOTE TO MAP USERS**  
No warrantee is made by the Bureau of Land Management as to the accuracy, reliability, or completeness of the data layers shown on this map. The official land records should be checked for the current status on any specific tract of land.



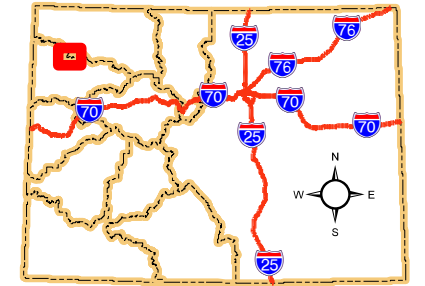
**Legend**

- BLM Field Office Areas Boundaries
- Recommended Oil & Gas Sale Status**
- Deferral
- COGCC Oil and Gas Well Locations
- Oil and Gas Leases**
- Non-Producing Leases
- Producing Leases
- Bureau of Land Management
- Private
- State
- Township & Range
- Sections
- Lakes and Reservoirs
- Minor Highways
- CDOT Local Roads
- Streams



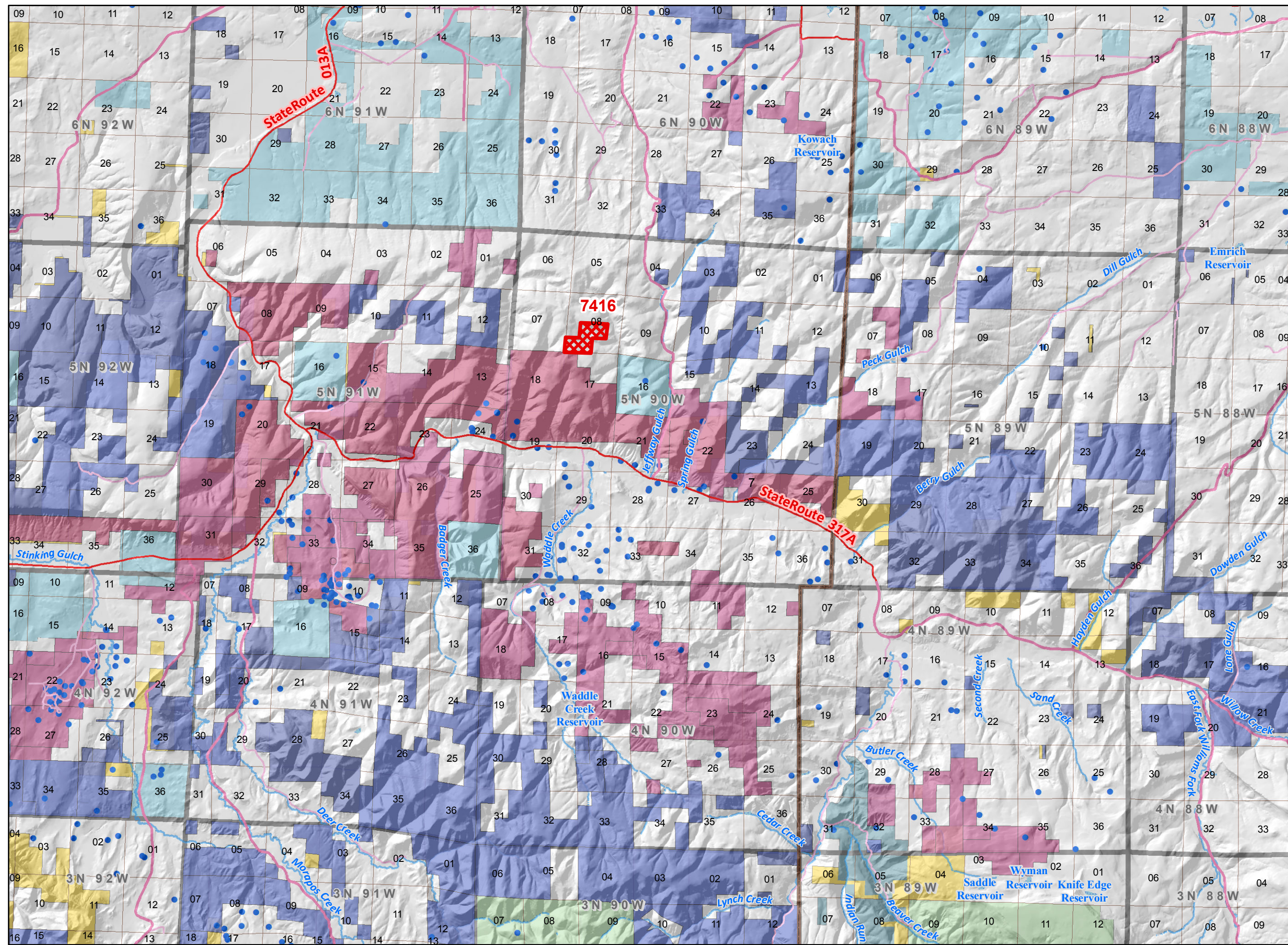
**Map Page Location  
Page Number 6**

**WHITE RIVER FIELD OFFICE**



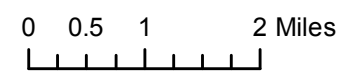


**NOTE TO MAP USERS**  
No warrantee is made by the Bureau of Land Management as to the accuracy, reliability, or completeness of the data layers shown on this map. The official land records should be checked for the current status on any specific tract of land.



**Legend**

- BLM Field Office Areas Boundaries
- Recommended Oil & Gas Sale Status**
- Sale
- COGCC Oil and Gas Well Locations
- Oil and Gas Leases**
- Non-Producing Leases
- Producing Leases
- Bureau of Land Management
- Private
- State
- State, County, City; Areas
- US Forest Service
- Township & Range
- Sections
- Lakes and Reservoirs
- Minor Highways
- CDOT Local Roads
- Streams



**Map Page Location  
Page Number 7**

**LITTLE SNAKE FIELD OFFICE**

