

Description

Webb Germplasm is blend of 3 populations of whiplash pappusgrass (*Pappophorum vaginatum* Buckley) from the South Texas Plains. Whiplash pappusgrass grows on coastal, saline, and alkaline sites in low areas, and on calcareous soils. Whiplash pappusgrass is also found in upland range sites in mixed stands with pink pappusgrass (*Pappophorum bicolor* E. Fourn.). Webb Germplasm is a cooperative release between the South Texas Natives Program of the Caesar Kleberg



Wildlife Research Institute at Texas A&M University-Kingsville, the USDA NRCS E. “Kika” de la Garza Plant Materials Center, and Texas AgriLife Research Station-Beeville. This grass grows 3-5’ tall, and produces seed and foliage from March through November. Selected accessions have superior active seed germination, greater seed production, and higher plant vigor, forage yield, and height ratings than other collections evaluated.

Uses & Adaptation

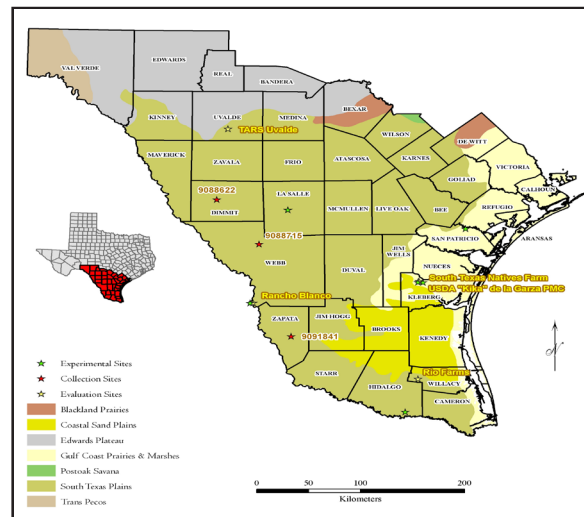
Webb Germplasm is recommended for use in rangeland seed mixes, for saline and alkaline site restoration, highway right of way plantings,

retired cropland restoration plantings, and for use in efforts to diversify invasive grass monocultures. Webb Germplasm provides good forage for livestock, and is an excellent bunchgrass that provides good cover for wildlife.

This release has performed well in a variety of soils. Components of the release originated from clay and sandy loam soils. Webb Germplasm is also adapted to saline and alkaline soils common throughout South Texas. Webb Germplasm will perform best in the South Texas Plains, Coastal Sand Plains, and Gulf Coast Prairies and Marshes eco-regions of Texas. Good performance can be expected in the southern Edwards Plateau, eastern Trans Pecos, and throughout northern Mexico, however use in these areas has not been tested.

Planting Methods

Best stands of Webb Germplasm are obtained by drilling coated seed into a firm, well-prepared seedbed in late August-early October



in South Texas. Plantings done at other times of the year typically have no emergence until late summer or early autumn, regardless of moisture availability. Coated and uncoated seed can also be planted by broadcasting, but culti-packing or light dragging is recommended to prevent seed loss to animals or wind. Seed should be planted no deeper than ¼” below the soil surface. For calibration purposes, Webb Germplasm contains approximately 436,000 uncoated seeds per bulk pound. Webb Germplasm should be planted at a rate of 3 pounds pure live seed per acre for solid stands. The seeding rate in mixed species plantings should be adjusted according to the desired amount of whiplash pappusgrass for the planting site. Increasing the seeding rate above the recommended rate does not result in better stands of Webb Germplasm.

Webb Germplasm can also be established with vegetative transplants. Transplants should be planted when adequate soil moisture is present. Rapid spread and recruitment has been observed in transplant established stands. On most sites, a mixture of Webb Germplasm whiplash pappusgrass and Maverick Germplasm pink pappusgrass will provide the best results.

Management

Newly planted stands of Webb Germplasm should not be grazed for 1 year after planting to allow establishment and development of adequate rootstock. Later, it can be periodically grazed to 4" stubble height with no adverse affects. Plants should be allowed to produce seed annually to insure stand health. Whiplash pappusgrass is a long-lived perennial that is extremely drought and fire tolerant once established.

Availability

Webb Germplasm whiplash pappusgrass was released in 2010. Breeder and foundation seed are maintained by *South Texas Natives* in conjunction with the Texas Foundation Seed Service. Breeder seed can be obtained by contacting *South Texas Natives*.



For More Information

South Texas Natives
Caesar Kleberg Wildlife Research Institute
Texas A&M University-Kingsville
MSC 218, 700 University Blvd
Kingsville, TX 78363

Phone: (361) 593-5550
<http://ckwri.tamuk.edu/research-programs/south-texas-natives/>
e-mail: forrest.smith@tamuk.edu

or

*USDA-NRCS E. "Kika" de la Garza
Plant Materials Center*
3409 North FM 1355
Kingsville, TX 78363

Phone: (361) 595-1313
www.plant-materials.nrcs.usda.gov/stpmc/

The U.S. Department of Agriculture (USDA) prohibits discrimination in all its programs and activities on the basis of race, color, national origin, gender, religion, age, disability, political beliefs, sexual orientation, and marital status or family status. (Not all prohibited bases apply to all programs.) Persons with disabilities who require alternative means for communication of program information (Braille, large print, audio tape, etc.) should contact USDA's TARGET center at 202-720-2600 (voice and TDD).

To file a complaint of discrimination, write USDA, Director, Office of Civil Rights, Room 326W, Whitten Building, 14th and Independence Avenue, SW, Washington, DC 20250-9410 or call (202) 720-5964 (voice or TDD). USDA is an equal opportunity provider and employer.

Webb

Germplasm Whiplash
Pappusgrass

Pappophorum vaginatum
Buckley

