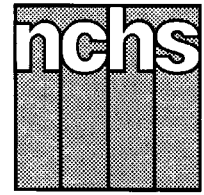


Monthly Vital Statistics Report



Provisional Data From the CENTERS FOR DISEASE CONTROL AND PREVENTION/National Center for Health Statistics

Births, Marriages, Divorces, and Deaths for February 1997

Births

According to provisional reports, an estimated 282,000 births occurred in the United States during February 1997. This was a decrease of 1 percent from the provisional number of births reported for February 1996 (286,000). The birth rate, 13.8 live births per 1,000 population, was 1 percent higher than the rate of 13.7 for February 1996. The fertility rate, 61.6 live births per 1,000 women aged 15–44 years, was 1 percent higher than the comparable rate for February 1996 (60.7). The seasonally adjusted fertility rate (62.8) was 1 percent higher than the comparable rate for February 1996 (62.0).

During the first 2 months of 1997, an estimated 583,000 births occurred, a 4-percent decrease from the 605,000 reported for the first 2 months of 1996. The birth rate for this period decreased by 4 percent, from 14.0 in 1996 to 13.5 in 1997.

An estimated 3,878,000 live births occurred in the 12-month period ending with February 1997, a slight increase from the 3,860,000 births reported for the same period 1 year earlier. The birth rate of 14.6 was 1 percent lower than the rate of 14.7 for the preceding 12-month period. The fertility rate for the most recent 12-month period was 65.0, slightly higher than the rate for the 12 months ending with

February 1996 (64.9). This combination of only slightly changed rates points to a slowdown of the generally downward trend observed since early 1991.

Natural increase

As a result of natural increase, the excess of births over deaths, an estimated 91,000 people, or 4.5 persons per 1,000 population, were added to the population during February 1997.

For the 12-month period ending with February 1997, 1,570,000 persons were added to the population. This represented a rate of natural increase of 5.9, the same as the rate for the preceding 12-month

Provisional Vital Statistics for the United States

[Rates for infant deaths are deaths under 1 year per 1,000 live births; fertility rates are live births per 1,000 women aged 15–44 years; all other rates are per 1,000 total population. Data are subject to monthly reporting variation; see [Technical notes](#)]

Item	February				January–February				12 months ending with February				
	Number		Rate		Number		Rate		Number		Rate		
	1997	1996	1997	1996	1997	1996	1997	1996	1997	1996	1997	1996	1995
Live births	282,000	286,000	13.8	13.7	583,000	605,000	13.5	14.0	3,878,000	3,860,000	14.6	14.7	15.2
Fertility rate	61.6	60.7	60.5	62.0	65.0	64.9	66.9
Deaths	191,000	193,000	9.3	9.2	409,000	413,000	9.5	9.5	2,308,000	2,308,000	8.7	8.8	8.7
Infant deaths	2,100	2,200	7.2	7.3	4,100	4,500	6.9	7.3	27,700	28,700	7.2	7.5	7.9
Natural increase	91,000	93,000	4.5	4.5	174,000	192,000	4.0	4.5	1,570,000	1,552,000	5.9	5.9	6.5
Marriages	161,000	155,000	8.2	7.7	262,000	255,000	6.4	6.1	2,351,000	2,333,000	8.9	8.9	9.0
Divorces	87,000	85,000	4.2	4.1	179,000	180,000	4.2	4.1	1,150,000	1,163,000	4.3	4.4	4.6
Population base (in millions)	266.6	264.2	265.6	263.2	261.2

... Category not applicable.

NOTES: Figures include revisions received from the States. Twelve-month figures for the current year reflect revisions received for previous months, and figures for earlier years may differ from those previously published.



U.S. DEPARTMENT OF HEALTH AND HUMAN SERVICES
Centers for Disease Control and Prevention
National Center for Health Statistics



period. The stable rate of natural increase was due to similar changes in the birth rate and death rate.

Marriages

An estimated 161,000 couples married in February 1997, 4 percent more than in February a year earlier (155,000). The marriage rate per 1,000 population for February increased 6 percent, from 7.7 in 1996 to 8.2 in 1997.

The number of marriages performed in the first 2 months of 1997 totaled 262,000, 3 percent more than for the comparable period in 1996 (255,000). The marriage rate for the 2-month period was 5 percent higher in 1997 than in 1996—6.4 compared with 6.1.

Approximately 2,351,000 marriages were performed during the 12-month period ending with February 1997, 1 percent more than the number of marriages performed during the same period a year earlier (2,333,000). The marriage rate for the current 12-month period (8.9) was the same as the rate for the period ending with February 1996.

Divorces

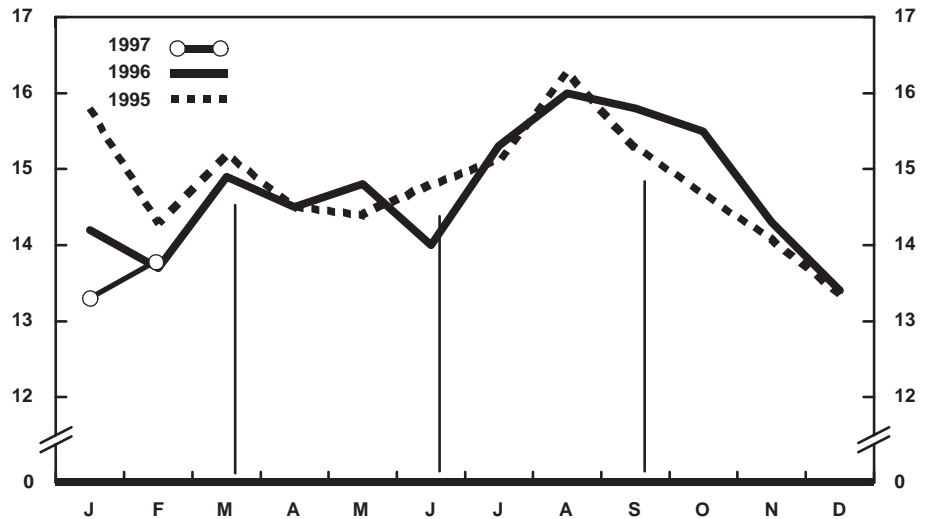
An estimated 87,000 couples divorced in February 1997, 2 percent more than in February 1996 (85,000). The divorce rate per 1,000 population for February was 2 percent higher in 1997 (4.2) than in 1996 (4.1).

The number of divorces granted in January–February 1997 was 179,000, 1 percent fewer than for the same period in 1996 (180,000). Despite the drop in the number, the divorce rate for the 2-month period rose 2 percent between 1996 and 1997—from 4.1 to 4.2.

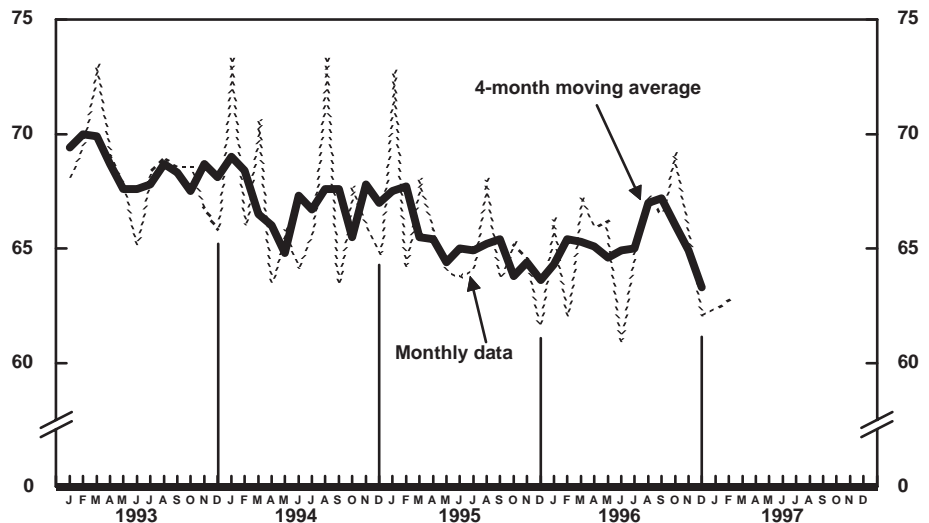
Approximately 1,150,000 couples divorced during the 12-month period ending with February 1997, a 1-percent decline compared with the number for the comparable period ending with February 1996 (1,163,000). The drop in the number contributed to a 2-percent drop in the divorce rate—from 4.4 for the 12-month period ending with February 1996 to 4.3 for the current period.

Deaths

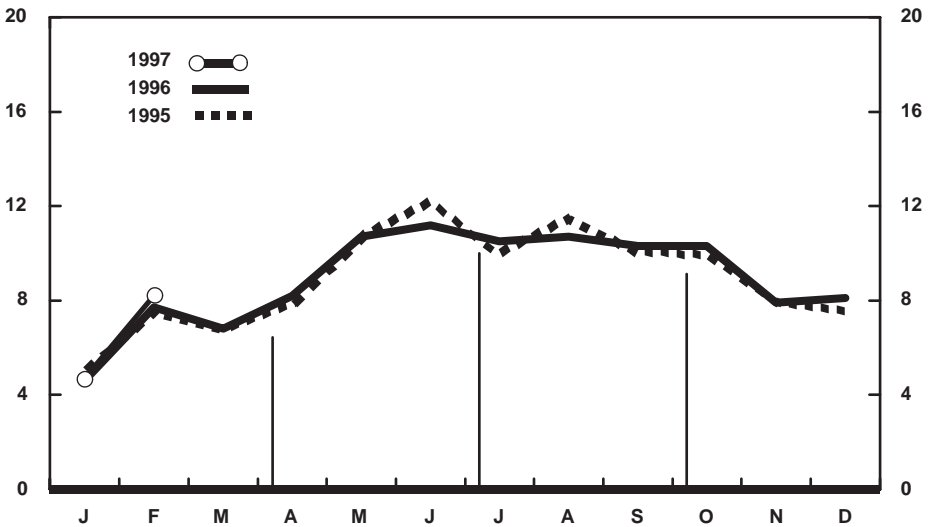
For February 1997 there were an estimated 191,000 deaths in the United States. The death rate was 9.3 deaths per



Provisional birth rates per 1,000 population by month: United States, 1995-97



Provisional seasonally adjusted fertility rates per 1,000 women aged 15-44 years: United States, 1993-97



Provisional marriage rates per 1,000 population by month: United States, 1995-97

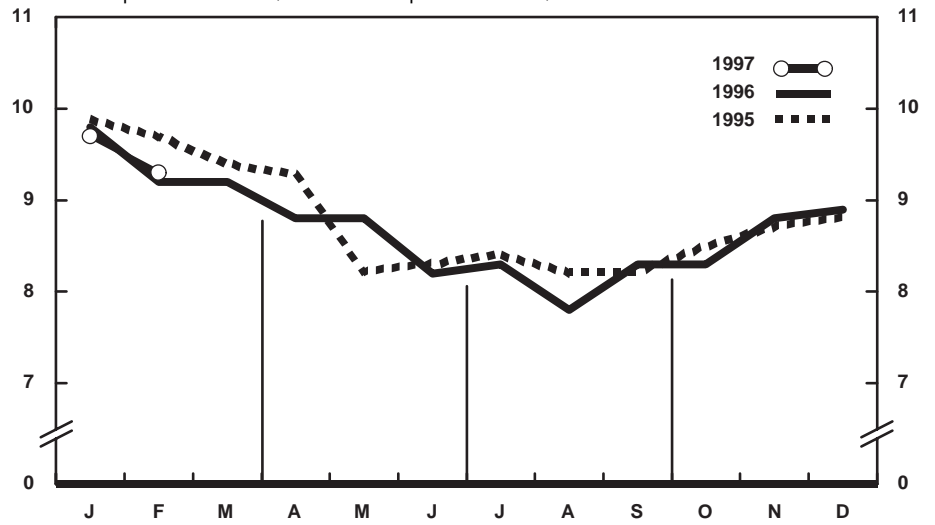
1,000 population, 1 percent higher than the rate of 9.2 for February a year earlier. Among the 191,000 deaths for February 1997 were 2,100 deaths at ages under 1 year.

The death rate for the 12 months ending with February 1997 was 8.7 deaths per 1,000 population, 1 percent lower than the rate of 8.8 for the comparable 12-month period a year earlier. The infant mortality rate for the current 12-month period was 7.2 per 1,000 live births, 4 percent lower than the rate of 7.5 for the 12 months ending with February 1996.

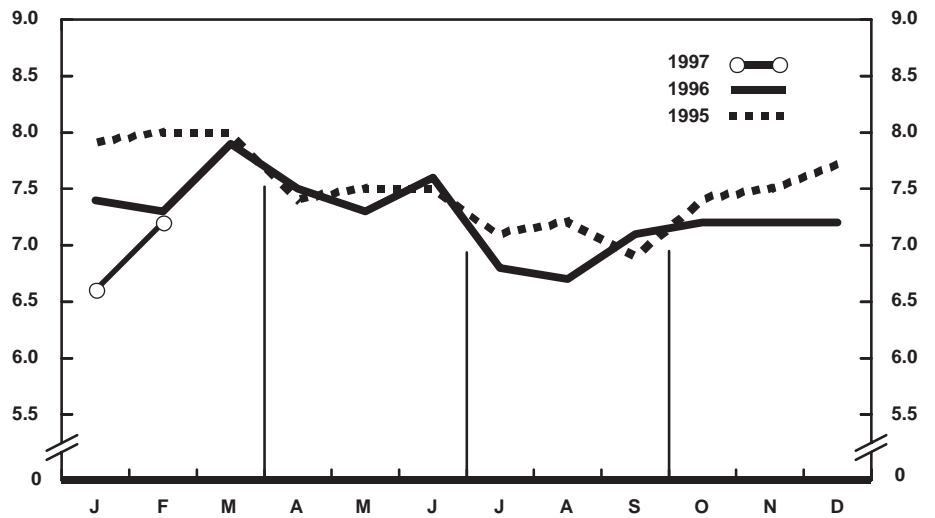
Current Mortality Sample, 12 months ending with January 1997—The provisional death rate for the 12 months ending with January 1997 was 870.2 per 100,000 population, 1 percent lower than the rate of 878.0 for the 12-month period ending January 1996. The provisional age-adjusted death rate for the 12-month period ending with January 1997 was 490.3 per 100,000 U.S. standard population, 2 percent lower than the rate of 501.3 for the 12-month period ending with January 1996. Age-adjusted death rates control for changes and variations in the age composition of the population; therefore, they are better indicators than crude rates for showing changes in mortality risk over time and for showing differences between race-sex groups within the population. Among the race-sex groups, the estimated age-adjusted death rate decreased for white males, black males, and black females. By age the death rate for the total population decreased for the following age groups: 1–4 years, 25–34 years, 35–44 years, 45–54 years, and 75–84 years of age.

Among the major causes of death, the estimated death rate decreased between the two successive 12-month periods for Diseases of heart, Human immunodeficiency virus infection, and for Homicide and legal intervention. The decrease for Homicide and legal intervention was largely due to the decline in the rate for homicide by firearms.

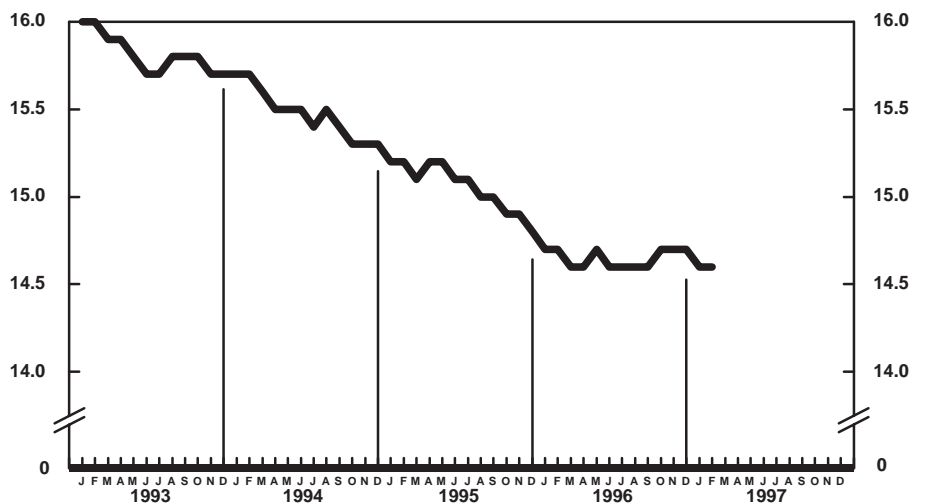
The infant mortality rate for the 12 months ending with January 1997 was 718.0 per 100,000 live births, 5 percent lower than the rate of 752.5 for the same 12-month period a year earlier. For infants under 28 days of age, the 12-month rate ending January 1997 was 473.6 compared with a rate of 476.9 for the 12-month



Provisional death rates per 1,000 population by month: United States, 1995–97

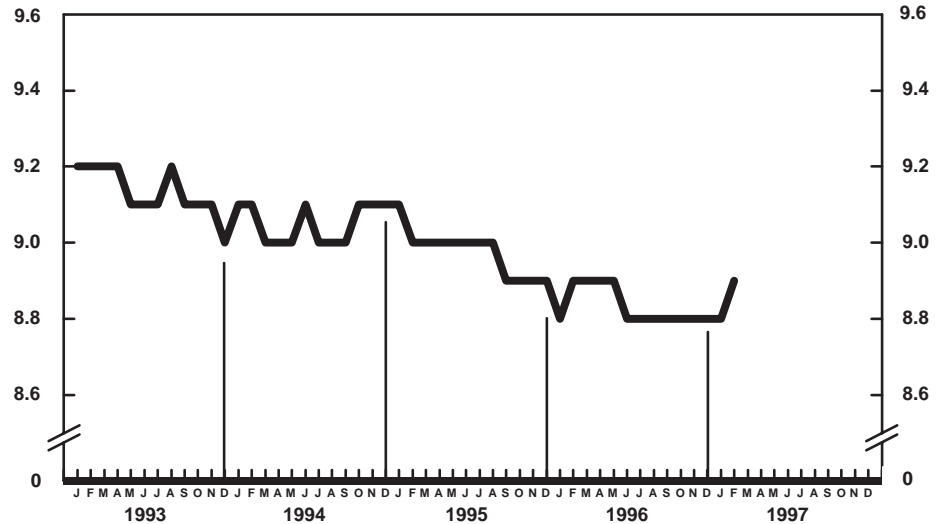


Provisional infant mortality rates per 1,000 live births by month: United States, 1995–97

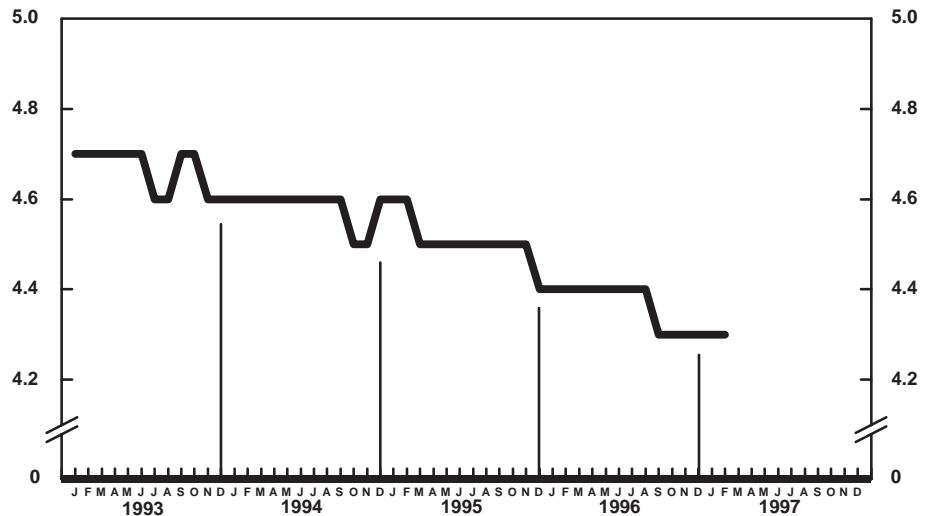


Provisional birth rates per 1,000 population for successive 12-month periods ending with month indicated: United States, 1993–97

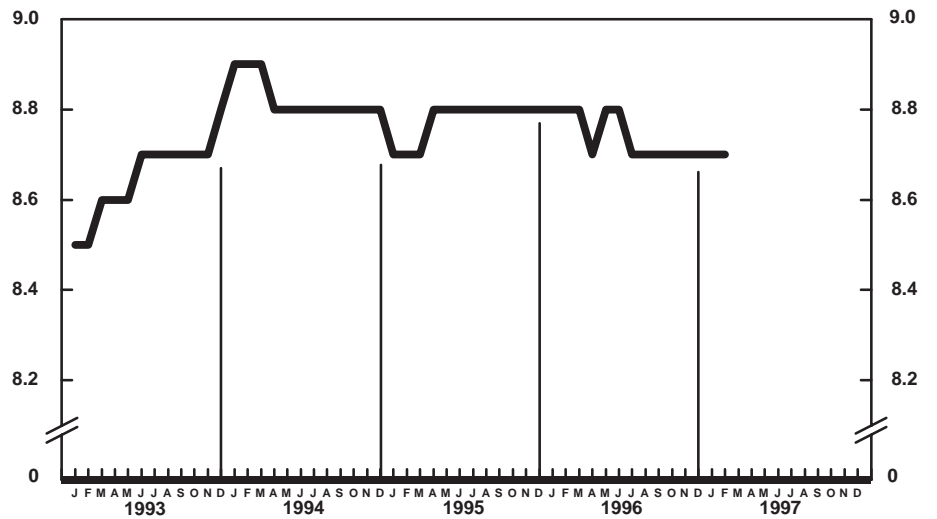
period a year earlier. The change in the mortality rate for infants under 28 days of age was not statistically significant. The infant mortality rate for infants aged 28 days–11 months was 244.2, 11 percent lower than the rate of 274.6 for the 12-month period a year earlier. Among causes of infant death, the changes in the infant mortality rates between the two successive 12-month periods were not statistically significant.



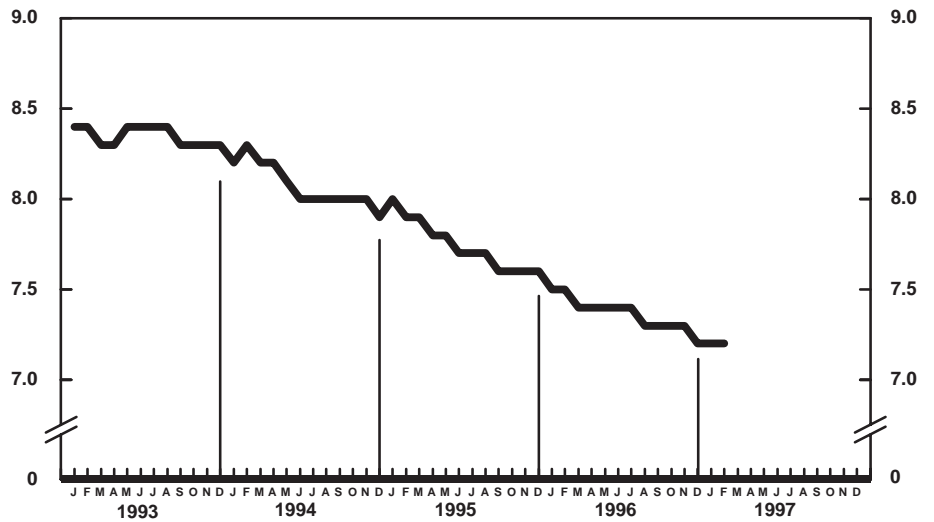
Provisional marriage rates per 1,000 population for successive 12-month periods ending with month indicated: United States, 1993–97



Provisional divorce rates per 1,000 population for successive 12-month periods ending with month indicated: United States, 1993–97



Provisional death rates per 1,000 population for successive 12-month periods ending with month indicated: United States, 1993-97



Provisional infant mortality rates per 1,000 live births for successive 12-month periods ending with month indicated: United States, 1993-97

Table 1. Provisional number of live births, marriages, divorces, deaths, and infant deaths and rates, by month: United States, January 1996–February 1997

[Data are provisional and are subject to monthly reporting variation; see [Technical notes](#)]

Period	Live births				Marriages		Divorces		Deaths		Infant deaths	
	Number	Rate per 1,000 population	Rate per 1,000 women aged 15–44 years		Number	Rate per 1,000 population	Number	Rate per 1,000 population	Number	Rate per 1,000 population	Number	Rate per 1,000 live births
			Unadjusted	Seasonally adjusted ¹								
1996:												
January	318,000	14.2	63.2	66.3	100,000	4.6	94,000	4.2	220,000	9.8	2,400	7.4
February	286,000	13.7	60.7	62.0	155,000	7.7	85,000	4.1	193,000	9.2	2,200	7.3
March	334,000	14.9	66.3	67.3	147,000	6.8	93,000	4.2	206,000	9.2	2,600	7.9
April	314,000	14.5	64.3	65.9	172,000	8.2	95,000	4.4	192,000	8.8	2,300	7.5
May	332,000	14.8	65.7	66.2	241,000	10.7	103,000	4.6	198,000	8.8	2,400	7.3
June	304,000	14.0	62.2	61.0	242,000	11.2	103,000	4.8	179,000	8.2	2,300	7.6
July	343,000	15.3	67.9	65.2	235,000	10.5	96,000	4.3	187,000	8.3	2,300	6.8
August	360,000	16.0	71.3	67.3	239,000	10.7	101,000	4.5	176,000	7.8	2,200	6.7
September	345,000	15.8	70.6	66.5	225,000	10.3	92,000	4.2	182,000	8.3	2,400	7.1
October	348,000	15.5	68.9	69.2	231,000	10.3	99,000	4.4	188,000	8.3	2,500	7.2
November	313,000	14.3	63.9	66.0	171,000	7.9	94,000	4.3	191,000	8.8	2,300	7.2
December	302,000	13.4	59.8	62.1	184,000	8.1	94,000	4.2	200,000	8.9	2,300	7.2
1997:												
January	301,000	13.3	59.5	62.4	101,000	4.7	93,000	4.1	219,000	9.7	2,100	6.6
February	282,000	13.8	61.6	62.8	161,000	8.2	87,000	4.2	191,000	9.3	2,100	7.2

¹ The method of seasonal adjustment, developed by the U.S. Bureau of the Census, is described in *The X-11 Variant of the Census Method II Seasonal Adjustment Program*, Technical Paper No. 15 (1967 revision).

NOTE: Figures include all revisions received from the States and, therefore, may differ from those previously published.

Table 2. Provisional number of live births and deaths: Each division and State, February 1996 and 1997, and cumulative figures, 1995–97

[Data are estimates by State of residence; see [Technical notes](#)]

Area	Live births					Deaths				
	February		January–February			February		January–February		
	1997	1996	1997	1996	1995	1997	1996	1997	1996	1995
New England	10,724	15,554	29,470	27,650	31,618	10,485	9,513	20,871	20,348	21,499
Maine	1,007	1,084	2,127	1,990	1,893	616	1,105	1,531	2,136	1,905
New Hampshire	915	623	2,315	1,687	2,264	809	799	1,852	1,511	1,692
Vermont	504	574	1,033	1,049	1,131	471	530	1,002	935	995
Massachusetts	5,236	9,417	17,309	15,329	15,664	5,300	4,075	9,740	9,479	10,352
Rhode Island	909	1,041	1,743	1,842	1,657	838	764	1,826	1,594	1,687
Connecticut	2,153	2,815	4,943	5,753	9,009	2,451	2,240	4,920	4,693	4,868
Middle Atlantic	43,147	30,272	80,012	76,641	77,813	29,755	28,804	67,736	66,104	68,865
New York	22,112	14,519	40,809	42,995	36,293	13,143	12,331	31,705	29,904	31,698
New Jersey	7,399	4,636	13,777	8,795	15,731	5,927	5,941	12,764	12,792	13,378
Pennsylvania	13,636	11,117	25,426	24,851	25,789	10,685	10,532	23,267	23,408	23,789
East North Central	46,043	52,353	90,809	101,450	97,163	31,638	32,780	69,352	70,244	68,291
Ohio	11,868	12,377	22,024	24,367	23,732	8,931	8,011	19,604	18,049	18,171
Indiana	6,430	7,189	10,718	13,394	12,742	4,332	5,391	8,213	10,012	8,579
Illinois	13,280	14,259	26,395	29,432	29,171	8,125	8,720	17,651	18,618	19,346
Michigan	9,674	12,843	21,066	23,542	21,101	6,452	6,734	15,219	15,014	14,405
Wisconsin	4,791	5,685	10,606	10,715	10,417	3,798	3,924	8,665	8,551	7,790
West North Central	20,032	19,242	41,618	40,361	41,989	14,984	14,313	32,850	29,447	29,963
Minnesota	4,811	4,919	10,155	10,029	9,571	3,037	2,832	7,018	6,594	6,592
Iowa	2,740	2,632	5,955	4,231	5,326	2,787	2,599	5,427	4,389	3,963
Missouri	5,989	5,603	12,895	12,810	13,464	4,824	4,443	10,068	9,289	10,435
North Dakota	647	651	1,327	1,298	1,405	505	496	1,216	989	1,107
South Dakota	795	689	1,670	1,215	1,497	563	565	1,413	901	1,138
Nebraska	1,833	2,110	3,460	3,946	3,770	1,287	1,352	2,832	2,691	2,691
Kansas	3,217	2,638	6,156	6,832	6,956	1,981	2,026	4,876	4,594	4,037
South Atlantic	51,238	54,102	104,773	106,403	114,155	37,004	38,720	80,693	83,544	80,818
Delaware	690	795	1,501	1,690	1,643	553	505	1,153	1,155	1,063
Maryland	5,751	5,811	8,812	11,747	12,238	3,501	3,203	6,169	7,335	6,980
District of Columbia	582	665	1,263	1,365	1,260	483	500	1,066	1,102	1,123
Virginia	6,073	6,610	11,307	11,621	17,690	4,299	4,348	9,190	9,162	9,823
West Virginia	1,330	1,390	2,613	3,254	3,344	2,124	863	4,140	2,784	3,290
North Carolina	8,455	8,889	18,123	17,021	17,547	5,455	6,694	12,431	12,367	11,837
South Carolina	3,897	5,152	8,884	9,412	8,403	2,804	2,869	5,474	6,897	5,848
Georgia	8,964	10,254	20,128	20,641	20,690	5,347	5,319	11,490	11,797	11,055
Florida	15,496	14,536	32,142	29,652	31,140	12,438	14,419	29,580	30,945	29,799
East South Central	15,919	14,697	34,068	32,550	36,976	12,700	12,764	28,873	27,356	29,609
Kentucky	4,139	4,125	8,782	8,820	7,685	3,192	3,168	7,516	7,206	7,732
Tennessee	4,832	3,216	10,650	7,655	12,329	3,496	3,653	8,599	7,026	9,293
Alabama	4,532	4,431	9,856	10,210	9,740	3,728	3,488	8,000	7,953	7,904
Mississippi	2,416	2,925	4,780	5,865	7,222	2,284	2,455	4,758	5,171	4,680
West South Central	34,060	35,678	62,146	68,540	92,838	19,121	19,794	34,152	40,894	43,604
Arkansas	2,583	2,752	5,286	5,637	5,467	2,250	2,477	4,541	4,790	4,047
Louisiana	4,326	4,802	10,243	11,670	13,339	3,407	3,400	6,832	7,640	7,448
Oklahoma	3,628	3,277	6,535	7,970	7,060	2,502	2,833	6,000	6,156	5,632
Texas ¹	23,523	24,847	40,082	43,263	66,972	10,962	11,084	16,779	22,308	26,477
Mountain	19,384	19,437	38,286	41,956	38,807	9,709	10,375	20,698	21,308	17,814
Montana	800	859	1,448	1,708	1,764	635	664	1,321	1,388	1,339
Idaho	1,309	1,504	2,844	3,196	2,565	668	670	1,651	1,513	1,400
Wyoming	570	420	964	927	1,130	272	263	602	569	675
Colorado	2,491	4,003	6,016	8,242	8,222	2,324	2,057	4,735	4,693	3,738
New Mexico	2,516	2,277	4,369	4,606	4,637	901	1,094	2,598	2,301	1,968
Arizona	7,122	6,512	12,038	15,044	11,692	2,769	3,269	5,230	6,319	4,943
Utah	3,712	3,075	7,292	5,668	5,813	1,033	1,024	2,221	1,980	1,754
Nevada	864	787	3,315	2,565	2,984	1,107	1,334	2,340	2,545	1,997
Pacific	44,136	46,655	100,289	105,980	106,609	25,501	25,742	54,176	53,619	53,020
Washington	5,548	5,249	12,091	11,563	11,999	5,232	2,603	9,506	6,784	6,314
Oregon	3,347	3,276	8,146	7,989	7,147	1,992	2,483	5,460	5,499	5,263
California ¹	33,195	35,805	76,063	81,767	82,989	17,457	19,791	37,535	39,603	39,800
Alaska	776	745	1,461	1,496	1,717	138	202	296	359	317
Hawaii	1,270	1,580	2,528	3,165	2,757	682	663	1,379	1,374	1,326
Puerto Rico ²	4,814	4,770	12,394	10,428	9,747	2,932	2,246	5,028	4,556	5,148

¹Figures include adjustments for varying lengths of reporting periods; see [Technical notes](#).

²Data for Puerto Rico are not included in U.S. total figures.

NOTES: Figures include all revisions received from the States. Cumulative figures for the current year reflect revisions received for previous months, and figures for earlier years may differ from those previously published.

Table 3. Provisional number of marriages and divorces: Each division and State, February 1996 and 1997, and cumulative figures, 1995-97

[By State of occurrence. Number of events reported; see [Technical notes](#). Divorces include reported annulments]

Area	Marriages					Divorces				
	February		January-February			February		January-February		
	1997	1996	1997	1996	1995	1997	1996	1997	1996	1995
New England	4,276	3,785	8,421	7,675	8,793	2,203	2,137	6,143	6,009	5,308
Maine	535	351	843	945	648	200	548	461	698	662
New Hampshire	417	332	1,142	870	820	472	315	1,030	735	769
Vermont	197	322	603	545	629	131	239	589	541	753
Massachusetts	1,698	1,665	3,532	3,493	4,717	400	-	1,900	1,828	1,207
Rhode Island	419	333	684	555	504	231	214	506	474	572
Connecticut	1,010	782	1,617	1,267	1,475	769	821	1,657	1,733	1,345
Middle Atlantic	18,177	11,430	38,450	21,170	24,816	6,755	5,767	19,347	19,362	16,581
New York ¹	11,139	7,066	28,150	12,967	14,876	1,698	1,290	8,973	10,232	6,616
New Jersey	2,791	2,093	4,603	3,475	4,011	2,027	1,823	4,348	3,818	3,893
Pennsylvania	4,247	2,271	5,697	4,728	5,929	3,030	2,654	6,026	5,312	6,072
East North Central	19,427	18,214	33,231	29,100	33,918	² 11,906	² 12,323	² 22,173	² 21,363	² 24,455
Ohio	5,256	4,451	8,859	6,537	10,388	3,689	3,852	7,022	5,937	8,065
Indiana	2,217	2,653	4,259	4,387	5,024	-	-	-	-	-
Illinois	6,133	4,910	10,768	8,448	8,753	2,713	2,678	5,751	5,314	6,206
Michigan	4,247	4,803	6,006	6,511	6,589	3,945	4,220	6,445	7,140	7,251
Wisconsin	1,574	1,397	3,339	3,217	3,164	1,559	1,573	2,955	2,972	2,933
West North Central	8,504	8,201	16,046	15,895	17,090	5,760	5,834	11,372	12,326	12,357
Minnesota	1,524	1,472	2,728	2,793	2,667	1,112	1,056	2,138	2,231	2,279
Iowa	1,098	1,081	2,406	1,575	2,310	756	836	1,649	1,496	2,001
Missouri	2,879	2,677	5,536	6,708	6,636	2,080	2,076	3,854	4,250	4,793
North Dakota	167	212	489	466	389	167	164	321	357	318
South Dakota	369	334	683	558	791	213	218	452	442	464
Nebraska	714	613	1,289	1,124	1,183	427	446	1,007	991	1,056
Kansas	1,753	1,812	2,915	2,671	3,114	1,005	1,038	1,951	2,559	1,446
South Atlantic	² 28,481	28,932	² 55,876	56,982	55,785	17,598	15,694	34,086	29,803	35,221
Delaware	312	277	530	485	443	353	302	526	554	696
Maryland	2,351	2,042	3,924	4,270	4,542	946	839	1,714	1,733	2,372
District of Columbia	-	105	-	203	84	131	77	243	154	148
Virginia	4,424	3,987	7,515	6,216	7,981	2,052	1,912	3,994	3,541	4,338
West Virginia	376	521	950	1,166	1,058	881	528	1,423	899	1,142
North Carolina	4,083	3,254	7,118	7,710	6,847	2,276	2,668	5,022	4,938	5,206
South Carolina	3,042	3,243	4,976	5,749	5,573	1,176	1,277	2,294	2,472	2,206
Georgia	1,780	3,385	5,730	8,650	8,228	3,278	3,088	6,362	5,503	5,683
Florida	12,113	12,118	25,133	22,533	21,029	6,505	5,003	12,508	10,009	13,430
East South Central	13,921	11,453	23,164	24,522	28,014	5,801	7,948	13,052	16,804	16,397
Kentucky	3,378	2,617	6,852	5,147	6,951	1,278	1,722	3,433	3,590	4,086
Tennessee	4,967	5,044	5,217	10,844	12,702	2,074	3,385	3,750	6,644	5,895
Alabama	4,091	2,465	7,496	5,747	5,838	2,074	1,698	3,696	3,840	4,309
Mississippi	1,485	1,327	3,599	2,784	2,523	375	1,143	2,173	2,730	2,107
West South Central	² 17,547	22,109	² 25,998	38,057	46,012	² 12,706	² 9,663	² 14,428	² 21,384	² 22,480
Arkansas	1,500	1,323	2,000	2,906	3,607	900	653	1,200	1,350	1,743
Louisiana	-	2,053	-	5,523	5,560	-	-	-	-	-
Oklahoma	2,096	1,910	3,637	3,394	3,430	1,456	1,606	2,797	3,219	3,559
Texas ³	13,951	16,823	20,361	26,234	33,415	10,350	7,404	10,431	16,815	17,178
Mountain	² 9,072	20,497	² 18,364	41,125	36,356	² 4,734	² 5,995	² 9,634	² 11,916	² 11,123
Montana	348	312	579	698	544	276	360	531	695	567
Idaho	787	984	2,018	2,086	2,143	581	451	1,213	1,109	1,110
Wyoming	426	388	635	527	570	301	263	505	466	526
Colorado	2,175	2,219	3,807	3,948	3,784	-	-	-	-	-
New Mexico ^{4,5}	1,303	1,452	2,313	2,474	1,742	789	896	1,568	1,947	1,574
Arizona ¹	3,034	2,992	6,717	6,310	5,192	2,168	1,981	4,387	4,002	3,987
Utah	999	1,661	2,295	3,036	2,872	619	866	1,430	1,402	1,440
Nevada	-	10,489	-	22,046	19,509	-	1,178	-	2,295	1,919
Pacific	23,797	24,070	39,329	43,331	34,033	² 3,474	² 4,645	² 7,767	² 8,950	² 8,945
Washington	2,143	2,318	4,987	4,636	5,542	2,038	2,725	4,358	5,450	5,062
Oregon	876	1,322	2,869	2,658	3,111	716	1,359	2,247	2,448	2,563
California	18,851	18,619	28,048	32,649	21,956	-	-	-	-	-
Alaska	303	295	585	649	708	254	150	475	344	499
Hawaii	1,624	1,516	2,840	2,739	2,716	466	411	687	708	821
Puerto Rico ⁶	2,587	2,330	4,667	4,661	4,715	-	-	-	-	-

- Quantity zero.

- - - Data not available.

¹Figures for marriages are marriage licenses issued for some counties.

²Excludes figures for State(s) shown below as not available.

³Figures include adjustments for varying lengths of reporting periods; see [Technical notes](#).

⁴Figures for marriages are marriage licenses issued.

⁵Figures for divorces include estimates for some counties.

⁶Data for Puerto Rico are not included in U.S. total figures.

NOTES: Figures include all revisions received from the States. Cumulative figures for the current year reflect revisions received for previous months, and figures for earlier years may differ from those previously published.

Table 4. Provisional number of deaths under 1 year and infant mortality rates: Each division and State, 12 months ending with February 1996 and 1997

[Data are estimates by State of residence. Figures should be interpreted with caution because of conversion of place of occurrence to place of residence; see [Technical notes](#). Infant mortality rates are deaths under 1 year per 1,000 live births in specified area]

Area	12 months ending with February			
	1997		1996	
	Number	Rate	Number	Rate
New England	910	5.3	919	5.3
Maine	47	3.4	86	6.1
New Hampshire	79	5.4	62	4.3
Vermont	54	8.0	38	5.7
Massachusetts	382	4.7	383	4.5
Rhode Island	73	5.8	92	7.1
Connecticut	275	6.4	258	6.1
Middle Atlantic	3,761	7.0	3,882	7.3
New York	1,882	7.0	1,961	7.2
New Jersey	811	6.8	807	7.5
Pennsylvania	1,068	7.1	1,114	7.4
East North Central	4,768	7.8	5,237	8.3
Ohio	1,170	7.8	1,282	8.2
Indiana	589	7.3	749	8.8
Illinois	1,481	8.2	1,603	8.6
Michigan	1,032	7.6	1,103	8.2
Wisconsin	496	7.5	500	7.4
West North Central	1,872	7.3	1,806	7.2
Minnesota	412	6.5	395	6.2
Iowa	216	5.9	222	6.3
Missouri	620	8.4	583	7.8
North Dakota	46	5.4	42	4.9
South Dakota	55	5.2	94	9.1
Nebraska	194	8.5	176	7.5
Kansas	329	8.4	294	8.0
South Atlantic	5,381	8.2	5,605	8.6
Delaware	75	7.6	72	7.1
Maryland	614	9.0	591	8.2
District of Columbia	123	15.1	165	18.9
Virginia	642	7.2	664	7.9
West Virginia	146	7.6	163	7.8
North Carolina	1,004	9.4	932	9.2
South Carolina	384	7.7	481	9.4
Georgia	1,018	9.0	1,089	9.6
Florida	1,375	7.2	1,448	7.8
East South Central	2,021	8.8	2,085	9.5
Kentucky	422	8.1	398	7.7
Tennessee	604	7.9	680	9.8
Alabama	600	9.8	613	10.0
Mississippi	395	9.8	394	11.0
West South Central	3,144	6.8	3,293	7.2
Arkansas	304	8.6	276	8.0
Louisiana	572	8.8	596	9.1
Oklahoma	390	8.9	417	8.9
Texas ¹	1,878	5.9	2,004	6.5
Mountain	1,805	7.2	1,675	6.9
Montana	77	7.3	88	7.9
Idaho	130	7.1	114	6.2
Wyoming	41	6.6	49	8.0
Colorado	381	8.4	357	7.1
New Mexico	175	6.5	174	6.4
Arizona	609	8.0	553	7.7
Utah	243	5.7	208	5.4
Nevada	149	6.2	132	6.3
Pacific	4,055	5.9	4,301	6.0
Washington	460	5.7	343	4.4
Oregon	243	5.5	258	5.9
California ¹	3,190	5.9	3,511	6.2
Alaska	67	6.6	77	7.8
Hawaii	95	5.4	112	6.0
Puerto Rico ²	559	8.8	661	10.7

¹Figures include adjustments for varying lengths of reporting periods; see [Technical notes](#).

²Data for Puerto Rico are not included in U.S. total figures.

NOTES: Figures include all revisions received from the States. Figures for the current year reflect revisions received for previous months, and figures for earlier years may differ from those previously published.

Table 5. Provisional number of deaths and death rates, by age, race, and sex, and age-adjusted death rates by race and sex: United States, January 1996 and 1997 and 12 months ending with January 1996 and 1997

[Data are provisional, estimated from a 10-percent sample of deaths. Age-specific rates on an annual basis per 100,000 population in specified group; age-adjusted rates per 100,000 U.S. standard population; see [Technical notes](#). Because of rounding of estimates, figures may not add to totals. For method of computation and information on standard errors of the estimates, see [Technical notes](#)]

Age, race, and sex	January				12 months ending with January			
	1997		1996		1997		1996	
	Number	Rate	Number	Rate	Number	Rate	Number	Rate
All races, both sexes¹								
All ages	219,000	965.4	220,000	984.1	2,310,000	870.2	2,309,000	878.0
Under 1 year					27,800	² 723.1	29,000	² 751.7
1-4 years	} 3,100	63.2	3,590	73.3	5,710	36.7	6,540	41.6
5-14 years					8,740	22.6	8,290	21.7
15-24 years	2,900	93.9	2,800	92.0	33,750	93.8	34,460	95.9
25-34 years	3,910	115.0	5,040	146.6	51,090	126.7	57,890	141.9
35-44 years	7,810	210.1	9,210	253.3	95,020	219.4	102,700	241.2
45-54 years	12,240	436.2	12,320	457.0	142,730	440.0	142,240	455.7
55-64 years	20,760	1,134.7	21,570	1,199.7	233,610	1,093.1	233,890	1,105.8
65-74 years	42,620	2,700.4	45,130	2,842.0	474,610	2,541.8	477,380	2,545.1
75-84 years	64,280	6,530.2	63,210	6,609.6	659,810	5,758.5	651,630	5,831.7
85 years and over	60,780	18,729.0	57,160	18,308.6	575,710	15,364.6	562,600	15,439.1
Not stated	110	...	50	...	1,010	...	930	...
Age-adjusted rate ³	518.3	...	546.0	...	490.3	...	501.3
All races, male¹								
All ages	108,450	978.9	110,250	1,009.4	1,163,380	897.3	1,171,280	912.1
Under 1 year					15,420	² 783.9	16,070	² 815.7
1-4 years	} 1,860	74.0	2,020	80.6	3,140	39.4	3,720	46.2
5-14 years					5,150	26.0	5,100	26.1
15-24 years	2,180	137.3	2,160	139.0	25,360	138.1	26,290	143.3
25-34 years	2,690	158.2	3,530	205.5	36,180	179.6	42,030	206.1
35-44 years	5,470	296.0	6,300	349.2	64,480	300.0	71,060	336.4
45-54 years	7,640	556.4	8,030	609.7	89,900	567.2	90,580	594.0
55-64 years	12,580	1,444.1	12,970	1,516.6	140,890	1,385.3	140,640	1,399.0
65-74 years	24,220	3,437.0	25,560	3,614.9	267,450	3,212.6	272,950	3,274.0
75-84 years	31,530	8,127.0	31,180	8,347.5	323,660	7,195.6	319,350	7,358.3
85 years and over	20,210	21,751.0	18,480	21,060.1	191,040	18,039.7	182,900	17,949.0
Not stated	90	...	20	...	700	...	600	...
Age-adjusted rate ³	658.5	...	697.8	...	623.1	...	644.1
All races, female¹								
All ages	110,050	952.4	109,820	960.0	1,146,210	844.3	1,136,170	844.2
Under 1 year					12,370	² 659.4	12,830	² 682.4
1-4 years	} 1,240	51.8	1,560	65.3	2,570	33.8	2,820	36.7
5-14 years					3,590	19.0	3,190	17.1
15-24 years	730	48.7	640	43.0	8,390	47.7	8,170	46.4
25-34 years	1,220	71.8	1,510	87.8	14,910	73.9	15,860	77.7
35-44 years	2,350	125.8	2,910	158.8	30,540	139.9	31,640	147.4
45-54 years	4,600	321.0	4,280	310.4	52,830	318.4	51,660	323.6
55-64 years	8,170	852.4	8,610	913.3	92,730	827.9	93,240	840.2
65-74 years	18,400	2,106.2	19,570	2,221.7	207,150	2,002.0	204,430	1,961.9
75-84 years	32,760	5,493.8	32,030	5,495.7	336,150	4,829.7	332,280	4,862.2
85 years and over	40,570	17,516.6	38,680	17,233.0	384,670	14,310.6	379,700	14,470.3
Not stated	20	...	30	...	310	...	330	...
Age-adjusted rate ³	402.2	...	420.0	...	379.8	...	382.1
White								
All ages	191,100	1,020.3	190,390	1,026.8	1,988,150	904.5	1,983,670	909.0
Under 1 year					18,050	² 602.7	19,080	² 633.3
1-4 years	} 2,160	55.6	2,340	60.4	3,870	31.6	4,500	36.3
5-14 years					6,280	20.5	6,130	20.2
15-24 years	2,150	87.5	1,890	77.9	23,910	83.5	24,580	85.7
25-34 years	2,850	103.4	3,420	122.1	36,000	109.7	40,460	121.4
35-44 years	5,800	187.9	6,540	216.0	69,080	191.7	73,130	206.3
45-54 years	9,760	408.4	9,610	417.3	108,840	393.3	109,400	410.0
55-64 years	16,810	1,066.5	17,410	1,121.7	189,760	1,029.3	189,590	1,037.5
65-74 years	36,900	2,647.7	39,480	2,805.7	410,590	2,485.6	412,880	2,482.1
75-84 years	58,210	6,533.0	56,970	6,569.8	592,050	5,698.3	585,580	5,779.5
85 years and over	56,380	19,191.3	52,710	18,549.0	528,980	15,521.7	517,620	15,614.5
Not stated	90	...	30	...	750	...	700	...
Age-adjusted rate ³	500.3	...	518.7	...	465.4	...	474.5

See footnotes at end of table.

Table 5. Provisional number of deaths and death rates, by age, race, and sex, and age-adjusted death rates by race and sex: United States, January 1996 and 1997 and 12 months ending with January 1996 and 1997—Con.

[Data are provisional, estimated from a 10-percent sample of deaths. Age-specific rates on an annual basis per 100,000 population in specified group; age-adjusted rates per 100,000 U.S. standard population; see [Technical notes](#). Because of rounding of estimates, figures may not add to totals. For method of computation and information on standard errors of the estimates, see [Technical notes](#)]

Age, race, and sex	January				12 months ending with January			
	1997		1996		1997		1996	
	Number	Rate	Number	Rate	Number	Rate	Number	Rate
White male								
All ages	93,790	1,018.0	94,150	1,034.7	991,580	919.1	995,760	930.2
Under 1 year					9,990	² 650.0	10,810	² 699.7
1–4 years	} 1,330	66.7	1,370	68.9	2,260	35.9	2,670	42.0
5–14 years					3,700	23.5	3,750	24.1
15–24 years	1,580	124.3	1,370	110.1	17,680	120.3	18,430	125.3
25–34 years	1,950	139.9	2,470	174.6	25,890	156.3	29,970	178.1
35–44 years	4,090	263.6	4,540	299.0	47,460	262.6	51,270	288.4
45–54 years	6,180	522.7	6,280	552.2	69,170	506.0	70,190	532.7
55–64 years	10,380	1,367.4	10,460	1,401.1	115,280	1,299.4	115,400	1,313.8
65–74 years	20,950	3,340.6	22,560	3,574.2	232,670	3,135.3	237,770	3,192.4
75–84 years	28,540	8,095.3	28,160	8,284.8	292,040	7,131.6	288,550	7,306.9
85 years and over	18,700	22,444.2	16,920	21,319.7	174,900	18,275.9	166,450	18,092.4
Not stated	80	...	20	...	530	...	490	...
Age-adjusted rate ³	633.4	...	659.5	...	589.9	...	608.7
White female								
All ages	97,310	1,022.5	96,240	1,019.2	996,580	890.5	987,910	888.6
Under 1 year					8,060	² 552.8	8,270	² 563.4
1–4 years	} 830	43.9	970	51.4	1,610	27.0	1,830	30.3
5–14 years					2,580	17.3	2,390	16.2
15–24 years	570	48.1	510	43.2	6,230	44.7	6,150	44.0
25–34 years	900	66.0	950	68.5	10,120	62.3	10,490	63.6
35–44 years	1,710	111.4	2,000	132.5	21,610	120.3	21,860	123.7
45–54 years	3,580	296.5	3,320	284.8	39,670	283.3	39,210	290.2
55–64 years	6,430	786.9	6,950	862.7	74,480	778.8	74,190	781.9
65–74 years	15,950	2,080.9	16,920	2,180.6	177,910	1,955.5	175,110	1,906.3
75–84 years	29,660	5,508.2	28,810	5,464.2	300,010	4,765.8	297,040	4,804.1
85 years and over	37,680	17,903.6	35,800	17,480.2	354,090	14,446.8	351,170	14,662.6
Not stated	10	...	10	...	220	...	210	...
Age-adjusted rate ³	389.3	...	401.3	...	361.2	...	361.9
Black								
All ages	24,130	842.1	26,630	941.6	281,750	837.0	285,950	861.4
Under 1 year					8,820	² 1,404.5	8,940	² 1,428.1
1–4 years	} 900	118.2	1,140	149.0	1,560	63.3	1,800	72.5
5–14 years					1,970	32.8	1,810	30.7
15–24 years	620	132.2	780	168.3	8,470	154.4	8,470	155.2
25–34 years	870	189.7	1,480	323.1	13,320	246.3	15,850	292.5
35–44 years	1,820	397.9	2,480	557.5	23,460	441.3	27,120	521.8
45–54 years	2,270	763.9	2,460	869.8	29,810	870.4	29,300	900.2
55–64 years	3,520	1,905.5	3,740	2,059.5	38,910	1,802.2	38,980	1,829.2
65–74 years	4,990	3,584.7	4,990	3,623.3	56,070	3,431.5	56,650	3,501.2
75–84 years	5,230	7,202.2	5,500	7,758.1	58,670	6,943.2	57,560	6,934.9
85 years and over	3,890	15,793.7	4,040	17,035.0	40,420	14,282.7	39,250	14,272.7
Not stated	20	...	20	...	260	...	210	...
Age-adjusted rate ³	723.9	...	819.4	...	733.8	...	762.1
Black male								
All ages	12,700	933.6	14,400	1,073.2	149,580	936.5	154,120	978.9
Under 1 year					4,860	² 1,528.3	4,740	² 1,490.6
1–4 years	} 510	132.0	590	152.1	780	62.4	920	73.1
5–14 years					1,160	38.0	1,170	39.1
15–24 years	480	204.0	690	297.5	6,660	242.6	6,770	248.2
25–34 years	610	280.6	970	447.3	9,120	356.3	11,000	429.4
35–44 years	1,260	588.7	1,640	790.0	15,350	618.2	18,160	748.9
45–54 years	1,340	994.8	1,600	1,248.5	18,550	1,195.2	18,330	1,242.7
55–64 years	1,950	2,432.2	2,260	2,862.9	22,650	2,414.7	22,300	2,408.2
65–74 years	2,800	4,812.8	2,640	4,597.2	30,310	4,437.8	30,530	4,529.7
75–84 years	2,460	9,195.1	2,640	10,186.0	26,810	8,648.4	26,570	8,798.0
85 years and over	1,280	17,730.5	1,370	19,968.9	13,170	16,259.3	13,530	17,126.6
Not stated	10	...	—	...	170	...	100	...
Age-adjusted rate ³	950.1	...	1,102.6	...	966.1	...	1,012.0

See footnotes at end of table.

Table 5. Provisional number of deaths and death rates, by age, race, and sex, and age-adjusted death rates by race and sex: United States, January 1996 and 1997 and 12 months ending with January 1996 and 1997—Con.

[Data are provisional, estimated from a 10-percent sample of deaths. Age-specific rates on an annual basis per 100,000 population in specified group; age-adjusted rates per 100,000 U.S. standard population; see [Technical notes](#). Because of rounding of estimates, figures may not add to totals. For method of computation and information on standard errors of the estimates, see [Technical notes](#)]

Age, race, and sex	January				12 months ending with January			
	1997		1996		1997		1996	
	Number	Rate	Number	Rate	Number	Rate	Number	Rate
Black female								
All ages	11,430	759.5	12,230	822.9	132,180	747.3	131,830	755.5
Under 1 year	} 390	104.0	550	145.9	3,970	² 1,280.6	4,210	² 1,366.9
1–4 years					790	65.0	870	71.1
5–14 years					810	27.3	650	22.4
15–24 years					1,810	66.1	1,700	62.3
25–34 years	260	107.7	510	211.4	4,200	147.5	4,850	169.8
35–44 years	570	234.2	840	354.1	8,110	286.3	8,970	323.6
45–54 years	930	572.4	860	556.0	11,260	601.2	10,960	615.7
55–64 years	1,570	1,501.7	1,480	1,441.7	16,260	1,331.7	16,680	1,384.2
65–74 years	2,180	2,690.5	2,340	2,914.2	25,770	2,709.8	26,130	2,768.0
75–84 years	2,770	6,039.7	2,860	6,359.0	31,860	5,955.1	30,990	5,869.3
85 years and over	2,620	15,048.0	2,670	15,840.8	27,250	13,490.1	25,720	13,122.4
Not stated	10	...	20	...	90	...	110	...
Age-adjusted rate ³	550.3	...	600.3	...	553.7	...	568.9

... Category not applicable.

– Quantity zero.

* Figure does not meet standards of reliability or precision; see [Technical notes](#).

¹Includes races other than white and black.

²Death rates under 1 year (based on population estimates) differ from infant mortality rates (based on live births); see [table 9](#) for infant mortality rates.

³For method of computation, see [Technical notes](#).

NOTES: Figures include all revisions received from the States. Twelve-month figures for the current year reflect revisions received for previous months, and figures for earlier years may differ from those previously published.

Table 6. Provisional number of deaths and death rates for 72 selected causes, Human immunodeficiency virus infection, and Alzheimer's disease: United States, January 1996 and 1997 and 12 months ending with January 1996 and 1997

[Data are provisional, estimated from a 10-percent sample of deaths. Rates on an annual basis per 100,000 estimated population. Because of rounding of estimates, figures may not add to totals. For method of computation and information on standard errors of the estimates, see [Technical notes](#). For explanation of asterisks preceding cause-of-death categories, see [Technical notes](#)]

Cause of death (Based on the <i>Ninth Revision, International Classification of Diseases, 1975</i>)	January				12 months ending with January			
	1997		1996		1997		1996	
	Number	Rate	Number	Rate	Number	Rate	Number	Rate
All causes	219,000	965.4	220,000	984.1	2,310,000	870.2	2,309,000	878.0
Shigellosis and amebiasis 004,006	—	*	—	*	—	*	—	*
Certain other intestinal infections 007-009	90	*	110	0.5	790	0.3	700	0.3
Tuberculosis 010-018	90	*	100	*	1,000	0.4	1,290	0.5
Tuberculosis of respiratory system 010-012	90	*	90	*	800	0.3	1,040	0.4
Other tuberculosis 013-018	—	*	10	*	200	0.1	260	0.1
Whooping cough 033	10	*	—	*	20	*	10	*
Streptococcal sore throat, scarlatina, and erysipelas 034-035	—	*	—	*	—	*	10	*
Meningococcal infection 036	30	*	40	*	260	0.1	320	0.1
Septicemia 038	2,160	9.5	2,260	10.1	21,570	8.1	21,300	8.1
Acute poliomyelitis 045	—	*	—	*	—	*	—	*
Measles 055	—	*	—	*	—	*	—	*
Viral hepatitis 070	310	1.4	300	1.3	3,840	1.4	3,490	1.3
Syphilis 090-097	—	*	—	*	30	*	110	0.0
All other infectious and parasitic diseases ¹ 001-003,005,020-032,037,039-041,*042-*044,046-054,056-066,071-088,098-139	2,130	9.4	4,130	18.5	35,940	13.5	48,550	18.5
Malignant neoplasms, including neoplasms of lymphatic and hematopoietic tissues 140-208	45,840	202.5	48,150	215.3	540,020	203.5	535,240	203.5
Malignant neoplasms of lip, oral cavity, and pharynx 140-149	800	3.5	690	3.1	7,950	3.0	7,890	3.0
Malignant neoplasms of digestive organs and peritoneum 150-159	10,840	47.9	11,420	51.1	126,260	47.6	125,410	47.7
Malignant neoplasms of respiratory and intrathoracic organs 160-165	13,570	60.0	13,940	62.3	158,690	59.8	154,600	58.8
Malignant neoplasm of breast 174-175	3,420	15.1	3,800	17.0	43,160	16.3	43,140	16.4
Malignant neoplasms of genital organs 179-187	5,060	22.3	5,140	23.0	60,150	22.7	60,500	23.0
Malignant neoplasms of urinary organs 188-189	1,840	8.1	2,280	10.2	22,600	8.5	23,180	8.8
Malignant neoplasms of all other and unspecified sites 170-173,190-199	5,430	24.0	5,790	25.9	65,890	24.8	65,600	24.9
Leukemia 204-208	1,830	8.1	1,860	8.3	20,310	7.7	19,700	7.5
Other malignant neoplasms of lymphatic and hematopoietic tissues 200-203	3,040	13.4	3,240	14.5	35,000	13.2	35,230	13.4
Benign neoplasms, carcinoma in situ, and neoplasms of uncertain behavior and of unspecified nature 210-239	670	3.0	710	3.2	7,600	2.9	8,280	3.1
Diabetes mellitus 250	5,860	25.9	5,670	25.3	61,660	23.2	58,260	22.2
Nutritional deficiencies 260-269	310	1.4	410	1.8	3,700	1.4	3,950	1.5
Anemias 280-285	490	2.2	240	1.1	4,220	1.6	4,110	1.6
Meningitis 320-322	50	*	70	*	570	0.2	700	0.3
Major cardiovascular diseases 390-448	91,470	404.1	91,260	408.1	941,850	354.9	942,850	358.5
Diseases of heart 390-398,402,404-429	70,720	312.5	71,150	318.2	728,700	274.6	731,790	278.2
Rheumatic fever and rheumatic heart disease 390-398	390	1.7	390	1.7	4,860	1.8	4,860	1.8
Hypertensive heart disease 402	2,360	10.4	2,350	10.5	26,030	9.8	24,550	9.3
Hypertensive heart and renal disease 404	220	1.0	240	1.1	2,190	0.8	2,300	0.9
Ischemic heart disease 410-414	45,600	201.5	46,120	206.2	472,490	178.0	477,450	181.5
Acute myocardial infarction 410	20,140	89.0	21,440	95.9	212,590	80.1	216,900	82.5
Other acute and subacute forms of ischemic heart disease 411	280	1.2	230	1.0	2,750	1.0	2,500	1.0
Angina pectoris 413	60	*	70	*	680	0.3	700	0.3
Old myocardial infarction and other forms of chronic ischemic heart disease 412,414	25,120	111.0	24,380	109.0	256,480	96.6	257,350	97.9
Other diseases of endocardium 424	1,560	6.9	1,450	6.5	16,590	6.3	15,510	5.9
All other forms of heart disease 415-423,425-429	20,580	90.9	20,600	92.1	206,550	77.8	207,120	78.8
Hypertension with or without renal disease 401,403	1,200	5.3	1,160	5.2	12,240	4.6	12,400	4.7
Cerebrovascular diseases 430-438	15,360	67.9	15,090	67.5	158,830	59.8	156,700	59.6
Intracerebral and other intracranial hemorrhage 431-432	2,330	10.3	2,130	9.5	23,710	8.9	21,500	8.2
Cerebral thrombosis and unspecified occlusion of cerebral arteries 434.0,434.9	1,230	5.4	1,260	5.6	12,430	4.7	13,310	5.1
Cerebral embolism 434.1	40	*	70	*	780	0.3	660	0.3
All other and late effects of cerebrovascular diseases 430,433,435-438	11,760	51.9	11,630	52.0	121,910	45.9	121,220	46.1

See footnotes at end of table.

Table 6. Provisional number of deaths and death rates for 72 selected causes, Human immunodeficiency virus infection, and Alzheimer's disease: United States, January 1996 and 1997 and 12 months ending with January 1996 and 1997—Con.

[Data are provisional, estimated from a 10-percent sample of deaths. Rates on an annual basis per 100,000 estimated population. Because of rounding of estimates, figures may not add to totals. For method of computation and information on standard errors of the estimates, see [Technical notes](#). For explanation of asterisks preceding cause-of-death categories, see [Technical notes](#)]

Cause of death (Based on the <i>Ninth Revision, International Classification of Diseases, 1975</i>)	January				12 months ending with January			
	1997		1996		1997		1996	
	Number	Rate	Number	Rate	Number	Rate	Number	Rate
Atherosclerosis 440	1,670	7.4	1,460	6.5	15,780	5.9	16,220	6.2
Other diseases of arteries, arterioles, and capillaries 441-448	2,520	11.1	2,400	10.7	26,290	9.9	25,750	9.8
Acute bronchitis and bronchiolitis 466	110	0.5	60	*	460	0.2	560	0.2
Pneumonia and influenza 480-487	10,910	48.2	9,650	43.1	82,810	31.2	81,350	30.9
Pneumonia 480-486	10,490	46.3	9,440	42.2	81,950	30.9	80,730	30.7
Influenza 487	420	1.8	220	1.0	870	0.3	620	0.2
Chronic obstructive pulmonary diseases and allied conditions 490-496	12,060	53.3	10,870	48.6	106,660	40.2	103,490	39.3
Bronchitis, chronic and unspecified 490-491	470	2.1	460	2.1	2,950	1.1	3,130	1.2
Emphysema 492	2,040	9.0	1,760	7.9	17,070	6.4	17,180	6.5
Asthma 493	650	2.9	470	2.1	5,330	2.0	5,420	2.1
Other chronic obstructive pulmonary diseases and allied conditions 494-496	8,910	39.4	8,170	36.5	81,310	30.6	77,760	29.6
Ulcer of stomach and duodenum 531-533	500	2.2	550	2.5	4,730	1.8	5,950	2.3
Appendicitis 540-543	30	*	30	*	470	0.2	380	0.1
Hernia of abdominal cavity and intestinal obstruction without mention of hernia 550-553,560	370	1.6	620	2.8	6,200	2.3	6,010	2.3
Chronic liver disease and cirrhosis 571	2,180	9.6	2,200	9.8	24,440	9.2	24,990	9.5
Cholelithiasis and other disorders of gallbladder 574-575	220	1.0	210	0.9	2,700	1.0	2,580	1.0
Nephritis and nephrotic syndrome, and nephrosis 580-589	2,530	11.2	2,650	11.8	26,860	10.1	25,760	9.8
Acute glomerulonephritis and nephrotic syndrome 580-581	20	*	10	*	230	0.1	260	0.1
Chronic glomerulonephritis, nephritis and nephropathy, not specified as acute or chronic, and renal sclerosis, unspecified 582-583,587	190	0.8	180	0.8	1,810	0.7	1,290	0.5
Renal failure, disorders resulting from impaired renal function, and small kidney of unknown cause 584-586,588-589	2,330	10.3	2,460	11.0	24,830	9.4	24,210	9.2
Infections of kidney 590	50	*	100	*	860	0.3	760	0.3
Hyperplasia of prostate 600	50	*	70	*	390	0.1	490	0.2
Complications of pregnancy, childbirth, and the puerperium 630-676	20	*	30	*	270	0.1	320	0.1
Pregnancy with abortive outcome 630-638	20	*	-	*	40	*	20	*
Other complications of pregnancy, childbirth, and the puerperium 640-676	-	*	30	*	230	0.1	300	0.1
Congenital anomalies 740-759	970	4.3	830	3.7	11,620	4.4	11,310	4.3
Certain conditions originating in the perinatal period 760-779	870	3.8	1,090	4.9	12,680	4.8	13,310	5.1
Birth trauma, intrauterine hypoxia, birth asphyxia, and respiratory distress syndrome 767-769	140	0.6	190	0.8	2,100	0.8	1,970	0.7
Other conditions originating in the perinatal period 760-766,770-779	730	3.2	900	4.0	10,580	4.0	11,340	4.3
Symptoms, signs, and ill-defined conditions 780-799	3,890	17.2	4,250	19.0	41,420	15.6	42,560	16.2
All other diseases Residual	22,410	99.0	21,240	95.0	220,210	83.0	214,400	81.5
Accidents and adverse effects E800-E949	7,520	33.2	7,470	33.4	90,810	34.2	89,760	34.1
Motor vehicle accidents E810-E825	3,580	15.8	3,360	15.0	43,910	16.5	43,530	16.6
All other accidents and adverse effects E800-E807,E826-E949	3,940	17.4	4,100	18.3	46,900	17.7	46,230	17.6
Suicide E950-E959	2,390	10.5	2,420	10.8	30,140	11.4	29,670	11.3
Homicide and legal intervention E960-E978	1,680	7.4	2,120	9.5	20,450	7.7	22,410	8.5
All other external causes E980-E999	210	0.9	170	0.8	2,370	0.9	2,230	0.8
Human immunodeficiency virus infection ² *042-*044	1,530	6.8	3,660	16.4	29,110	11.0	42,070	16.0
Alzheimer's disease 331.0	2,530	11.2	2,380	10.6	22,080	8.3	20,840	7.9

- Quantity zero. * Figure does not meet standards of reliability or precision; see [Technical notes](#). 0.0 Quantity more than zero but less than 0.05.

¹Includes data for deaths due to Human immunodeficiency virus infection (categories *042-*044) shown separately below; see [Technical notes](#).

²Included in All other infectious and parasitic diseases shown above.

NOTES: Figures include all revisions received from the States. Twelve-month figures for the current year reflect revisions received for previous months, and figures for earlier years may differ from those previously published.

Table 7. Provisional number of deaths and death rates for 16 selected subcategories of Malignant neoplasms, including neoplasms of lymphatic and hematopoietic tissues: United States, January 1996 and 1997 and 12 months ending with January 1996 and 1997

[Data are provisional, estimated from a 10-percent sample of deaths. Rates on an annual basis per 100,000 estimated population. Because of rounding of estimates, figures may not add to totals. For method of computation and information on standard errors of the estimates, see [Technical notes](#)]

Cause of death (Based on the <i>Ninth Revision, International Classification of Diseases, 1975</i>)	January				12 months ending with January			
	1997		1996		1997		1996	
	Number	Rate	Number	Rate	Number	Rate	Number	Rate
Malignant neoplasms, including neoplasms of lymphatic and hematopoietic tissues ¹ 140-208	45,840	202.5	48,150	215.3	540,020	203.5	535,240	203.5
Malignant neoplasm of esophagus. 150	1,020	4.5	1,040	4.6	11,120	4.2	10,410	4.0
Malignant neoplasm of stomach 151	1,050	4.6	1,210	5.4	13,240	5.0	13,740	5.2
Malignant neoplasms of colon, rectum, rectosigmoid junction, and anus 153,154	4,780	21.1	5,160	23.1	56,870	21.4	55,970	21.3
Malignant neoplasm of pancreas. 157	2,390	10.5	2,200	9.8	27,790	10.5	27,150	10.3
Malignant neoplasms of trachea, bronchus, and lung 162	13,180	58.2	13,530	60.5	153,400	57.8	149,520	56.9
Malignant melanoma of skin 172	590	2.6	440	2.0	7,190	2.7	6,790	2.6
Malignant neoplasm of cervix uteri. 180	390	1.7	290	1.3	4,580	1.7	4,770	1.8
Malignant neoplasms of body of uterus and of uterus, part unspecified 179,182	430	1.9	420	1.9	5,800	2.2	6,010	2.3
Malignant neoplasm of ovary 183.0	1,030	4.5	1,360	6.1	13,180	5.0	13,770	5.2
Malignant neoplasm of prostate 185	3,070	13.6	2,880	12.9	34,690	13.1	34,150	13.0
Malignant neoplasm of bladder. 188	930	4.1	1,160	5.2	11,030	4.2	11,550	4.4
Malignant neoplasms of kidney and other and unspecified urinary organs 189	920	4.1	1,120	5.0	11,570	4.4	11,630	4.4
Malignant neoplasms of brain and other and unspecified parts of nervous system. 191,192	950	4.2	1,000	4.5	11,550	4.4	11,630	4.4
Hodgkin's disease. 201	80	*	210	0.9	1,330	0.5	1,640	0.6
Malignant lymphoma other than Hodgkin's disease. 200,202	2,030	9.0	2,060	9.2	23,150	8.7	23,250	8.8
Multiple myeloma and other immunoproliferative neoplasms 203	930	4.1	980	4.4	10,510	4.0	10,350	3.9

* Figure does not meet standards of reliability or precision; see [Technical notes](#).

¹ Includes figures for subcategories not shown below.

NOTES: Figures include all revisions received from the States. Twelve-month figures for the current year reflect revisions received for previous months, and figures for earlier years may differ from those previously published.

Table 8. Provisional number of deaths and death rates for firearm mortality: United States, January 1996 and 1997 and 12 months ending with January 1996 and 1997

[Data are provisional, estimated from a 10-percent sample of deaths. Rates on an annual basis per 100,000 estimated population. Because of rounding of estimates, figures may not add to totals. For method of computation and information on standard errors of the estimates, see [Technical notes](#)]

Cause of death (Based on the <i>Ninth Revision International Classification of Diseases, 1975</i>)	January				12 months ending with January			
	1997		1996		1997		1996	
	Number	Rate	Number	Rate	Number	Rate	Number	Rate
Injury by firearms E922,E955.0-E955.4,E965.0-965.4,E970,E985.0-E985.4	2,800	12.4	3,330	14.9	33,940	12.8	35,610	13.5
Accident caused by firearm missile E922	70	*	160	0.7	1,250	0.5	1,380	0.5
Suicide by firearms E955.0-E955.4	1,470	6.5	1,610	7.2	18,200	6.9	18,060	6.9
Homicide and legal intervention by firearms E965.0-E965.4,E970	1,260	5.6	1,550	6.9	14,290	5.4	15,930	6.1
Injury by firearms, undetermined whether accidentally or purposely inflicted E985.0-E985.4	10	*	10	*	210	0.1	230	0.1

* Figure does not meet standards of reliability or precision; see [Technical notes](#).

NOTES: Figures include all revisions received from the States. Twelve-month figures for the current year reflect revisions received for previous months, and figures for earlier years may differ from those previously published.

Table 9. Provisional number of deaths under 1 year and infant mortality rates, by age and for 10 selected causes: United States, 1996 and 1997 and 12 months ending with January 1996 and 1997

[Data are provisional, estimated from a 10-percent sample of deaths. Rates on an annual basis per 100,000 live births. Because of rounding of estimates, figures may not add to totals. For method of computation and information on standard errors of the estimates, see [Technical notes](#)]

Age and cause of death (Based on the <i>Ninth Revision International Classification of Diseases, 1975</i>)	January				12 months ending with January			
	1997		1996		1997		1996	
	Number	Rate	Number	Rate	Number	Rate	Number	Rate
Total, under 1 year	2,100	662.0	2,400	736.0	27,800	718.0	29,000	752.5
Under 28 days	1,230	396.6	1,370	428.9	18,330	473.6	18,340	476.9
28 days–11 months	820	264.4	980	306.8	9,450	244.2	10,560	274.6
Certain gastrointestinal diseases 008–009,535,555–558	30	*	–	*	250	6.5	170	4.4
Pneumonia and influenza 480–487	10	*	20	*	310	8.0	340	8.8
Congenital anomalies 740–759	530	170.9	430	134.6	6,620	171.1	5,990	155.8
Disorders relating to short gestation and unspecified low birthweight 765	250	80.6	210	65.7	3,610	93.3	3,370	87.6
Birth trauma 767	–	*	20	*	150	3.9	200	5.2
Intrauterine hypoxia and birth asphyxia 768	60	*	70	*	520	13.4	460	12.0
Respiratory distress syndrome 769	80	*	100	*	1,380	35.7	1,220	31.7
Other conditions originating in the perinatal period. 760–764,766,770–779	460	148.3	680	212.9	6,890	178.0	7,850	204.1
Sudden infant death syndrome 798.0	200	64.5	300	93.9	2,500	64.6	2,910	75.7
All other causes Residual	430	138.7	530	165.9	5,560	143.7	6,400	166.4

* Figure does not meet standards of reliability or precision; see [Technical notes](#).

– Quantity zero.

NOTES: Figures include all revisions received from the States. Twelve-month figures for the current year reflect revisions received for previous months, and figures for earlier years may differ from those previously published.

Technical notes

Nature and sources of data

Data in this report are provisional unless otherwise specified and include only events occurring within the United States (50 States and the District of Columbia). Mortality data exclude fetal deaths. Data for the Commonwealth of Puerto Rico are not included in the U.S. totals.

Birth, death, and infant death figures in [tables 2](#) and [4](#) for each State are estimates by State of residence. These estimates are derived by applying adjustment ratios to the actual counts of certificates for all events occurring in the State and received in registration offices during a 1-month period regardless of date of the event. The adjustment ratios for each data year represent the observed relationship between final State occurrence figures and final State residence figures for the three most recent years for which final data were available and are expressed as a single ratio for each State. As in previous years, monthly State marriage and divorce figures represent the actual count of all events occurring in the State (State of occurrence) that were received in the registration offices during the 1-month period. Delay in the receipt of certificates in a registration office may result in a low State figure for a given month followed by a high figure for the month(s) in which the delayed records are received. Data for previous months and cumulative data include revised figures received from the States.

Figures for births, deaths, and infant deaths for California in [tables 2](#) and [4](#) contain adjustments for varying lengths of State reporting periods. Figures for Texas for all events shown in [tables 2–4](#) also are adjusted for varying lengths of State reporting periods. The figures for both States are adjusted by the ratio between the number of days in the data month and the number of days in the State reporting period. The adjusted figures are included in the U.S. totals shown elsewhere in this report.

U.S. totals for births, deaths, and infant deaths are based on the State estimates by State of residence and, therefore, in effect, exclude events to nonresidents of the United States. Events to nonresidents of the United States are included in all

marriage and divorce figures. The effect of excluding events to nonresidents from the U.S. totals is small.

Provisional totals for the United States include estimates for State data shown as not available. Provisional totals for births and marriages for the entire United States include adjustments for observed differences between provisional and final monthly figures.

Divorce figures include reported annulments. The monthly national divorce estimate is obtained by multiplying the total for the reporting areas by the ratio observed between the most recent final annual divorce total for the United States and the provisional total for the reporting areas combined.

Random variation—Although the counts in this report are not subject to sampling variability (except the Current Mortality Sample), they may be affected by random variation. When the number of events is small and the probability of such an event is small, considerable caution must be observed in interpreting the data. Such infrequent events may be assumed to follow a Poisson probability distribution. For this distribution a simple approximation may be used to estimate the random variation as follows:

If N is the number of events in the population and R is the corresponding rate, the chances are 19 in 20 that

$$1. N - 2\sqrt{N} \text{ and } N + 2\sqrt{N}$$

covers the “true” number of events.

$$2. R - 2 \frac{R}{\sqrt{N}} \text{ and } R + 2 \frac{R}{\sqrt{N}}$$

covers the “true” rate.

If the rate R_1 corresponding to N_1 events is compared with the rate R_2 corresponding to N_2 events, the difference between the two rates may be regarded as statistically significant at the 0.05 level if it exceeds

$$2 \sqrt{\frac{R_1^2}{N_1} + \frac{R_2^2}{N_2}}$$

Additional information on random variation in numbers of events, rates, and ratios may be found in the technical appendixes of *Vital Statistics of the United States, 1992, Volumes I and II*.

Rates

Rates are on an annual basis and, except for infant mortality rates, are per 1,000 or 100,000 estimated population residing in the United States. The populations used for computing these rates are furnished by the U.S. Bureau of the Census. Rates shown in this report beginning with 1992 were computed using populations based on the 1990 Census enumeration comparable to those used for final data. Monthly rates are based on populations estimated for the specific month. Year-to-date rates are averages of monthly rates that have been weighted by the number of days in the corresponding months. Rates for 12-month periods are the sum of events for the period per population estimated at the midpoint of the period.

Infant mortality rates are deaths under 1 year of age for the specified period (monthly, year-to-date, or 12-month period) per 1,000 or 100,000 live births. Births used for computing monthly and year-to-date infant mortality rates are adjusted for monthly variation in the number of births. Births used to compute 12-month rates do not contain this adjustment. Births used for computing infant mortality rates are not corrected for observed differences between provisional and final monthly figures as described earlier in “[Nature and sources of data.](#)” Because monthly infant mortality rates are based on relatively few events, they are highly variable. Therefore, comparisons of monthly infant mortality rates should be interpreted cautiously; see “[Random variation.](#)”

Age-adjusted death rates are used to compare relative mortality risks across groups and over time. However, they should be viewed as constructs or indexes rather than as direct or actual measures of mortality risk. Statistically, they are weighted averages of the age-specific death rates, where the weights represent the fixed population proportions by age. See chapter 5 of an earlier report (1). The age-adjusted death rates presented in this report were computed by the direct method, that is, by applying age-specific death rates to the U.S. standard million population (2). See also chapter 10 of an earlier report (1). Age groups in [table 5](#) were used to compute the age-adjusted

rates shown in that table. It is important not to compare age-adjusted rates with crude rates.

Current Mortality Sample

The Current Mortality Sample (CMS) is a 10-percent systematic sample of death certificates drawn each month after the certificates are counted in the State registration offices. Deaths and death rates for the United States by age, race, sex, and cause are estimated based on the sample. Because of the additional time required to select and process the certificates, data based on the CMS are published 1 month after publication of the U.S. and State counts. Complete information concerning the underlying cause of death sometimes is not available when the sample is drawn. As a result estimates based on sample counts for certain causes are biased. Correction for bias is not made in this report.

Estimated numbers of deaths based on the sample were proportionately adjusted to be consistent with estimates based on the count of death certificates received in State registration offices.

HIV infection—Beginning with data for 1987, the National Center for Health Statistics introduced categories *042–*044 for classifying and coding Human immunodeficiency virus (HIV) infection. The asterisks before the categories indicate that these codes are not part of the

Ninth Revision, International Classification of Diseases. Deaths classified to these categories are included in All other infectious and parasitic diseases in the List of 72 Selected Causes of Death and are also shown separately at the bottom of table 6.

Sampling variability—Because the estimates of deaths and death rates presented in this report with the exception of total deaths and deaths under 1 year are based on a sample of death certificates, they are subject to sampling variability. The estimated relative standard error in the following table is a measure of the

Relative standard errors for estimated numbers of deaths from the Current Mortality Sample expressed as a percent of the estimate

Estimated number of deaths	Relative standard error of estimate (as percent)	
	170,000 estimated deaths each month	2,000,000 estimated deaths each year
10	94.9	94.9
20	67.1	67.1
50	42.4	42.4
100	30.0	30.0
200	21.2	21.2
500	13.4	13.4
1,000	9.5	9.5
2,000	6.7	6.7
5,000	4.2	4.2
10,000	2.9	3.0
20,000	2.0	2.1
50,000	1.1	1.3
100,000	0.6	0.9
200,000	0.6
500,000	0.4
1,000,000	0.2

sampling error of the estimated number of deaths (or of the estimated death rate) expressed as a percent of the estimate. The first column refers to monthly estimates; the second to annual; cumulative year-to-date totals fall between the two.

The chances are about 2 in 3 that the percent difference between an estimate and the result of a complete count is less than the percent shown. The chances are about 19 in 20 that the percent difference is less than twice the percent shown. A figure based on 100 or fewer estimated deaths has a relative standard error of 30 percent or more and is, therefore, considered unreliable. A rate based on 100 or fewer estimated deaths has been replaced by an asterisk.

Unless otherwise specified comparisons made in the text between death rates based on the CMS were statistically significant at the 0.05 level of significance. Lack of comment in the text about any two rates does not mean that the difference was tested and found not to be significant at this level.

References

1. Feinleib M, Zarate AO, eds. Reconsidering age adjustment procedures: Workshop proceedings. National Center for Health Statistics. Vital Health Stat 4(29). 1992.
2. Grove RD, Hetzel AM. Vital statistics rates in the United States, 1940–1960. Public Health Service. Washington: National Center for Health Statistics. 1968.

Suggested citation

National Center for Health Statistics. Births, marriages, divorces, and deaths for February 1997. Monthly vital statistics report; vol 46 no 2. Hyattsville, Maryland: National Center for Health Statistics. 1997.

Copyright information

All material appearing in this report is in the public domain and may be reproduced or copied without permission; citation as to source, however, is appreciated.

National Center for Health Statistics

Director
Edward J. Sondik, Ph.D.

Deputy Director
Jack R. Anderson

Division of Vital Statistics

Director
Mary Anne Freedman

**DEPARTMENT OF
HEALTH & HUMAN SERVICES**

Centers for Disease Control and Prevention
National Center for Health Statistics
6525 Belcrest Road
Hyattsville, Maryland 20782

FIRST CLASS MAIL
POSTAGE & FEES PAID
PHS/NCHS
PERMIT NO. G-281

**OFFICIAL BUSINESS
PENALTY FOR PRIVATE USE, \$300**

To receive this publication regularly, contact the National Center for Health Statistics by calling 301-436-8500
E-mail: nchsquery@cdc.gov
Internet: <http://www.cdc.gov/nchswww/nchshome.htm>

DHHS Publication No. (PHS) 97-1120
7-0758 (9/97)