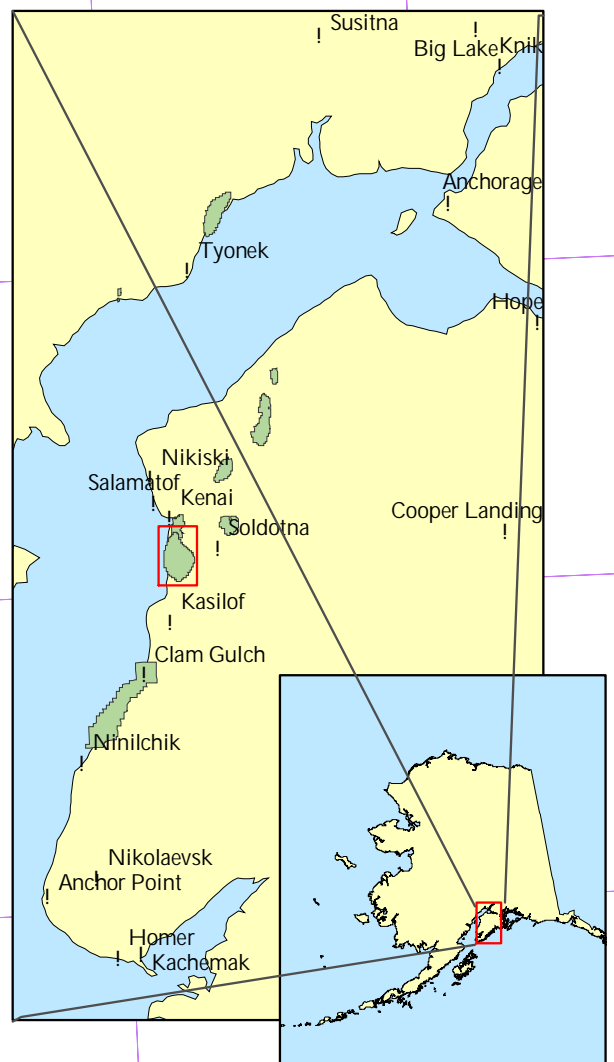
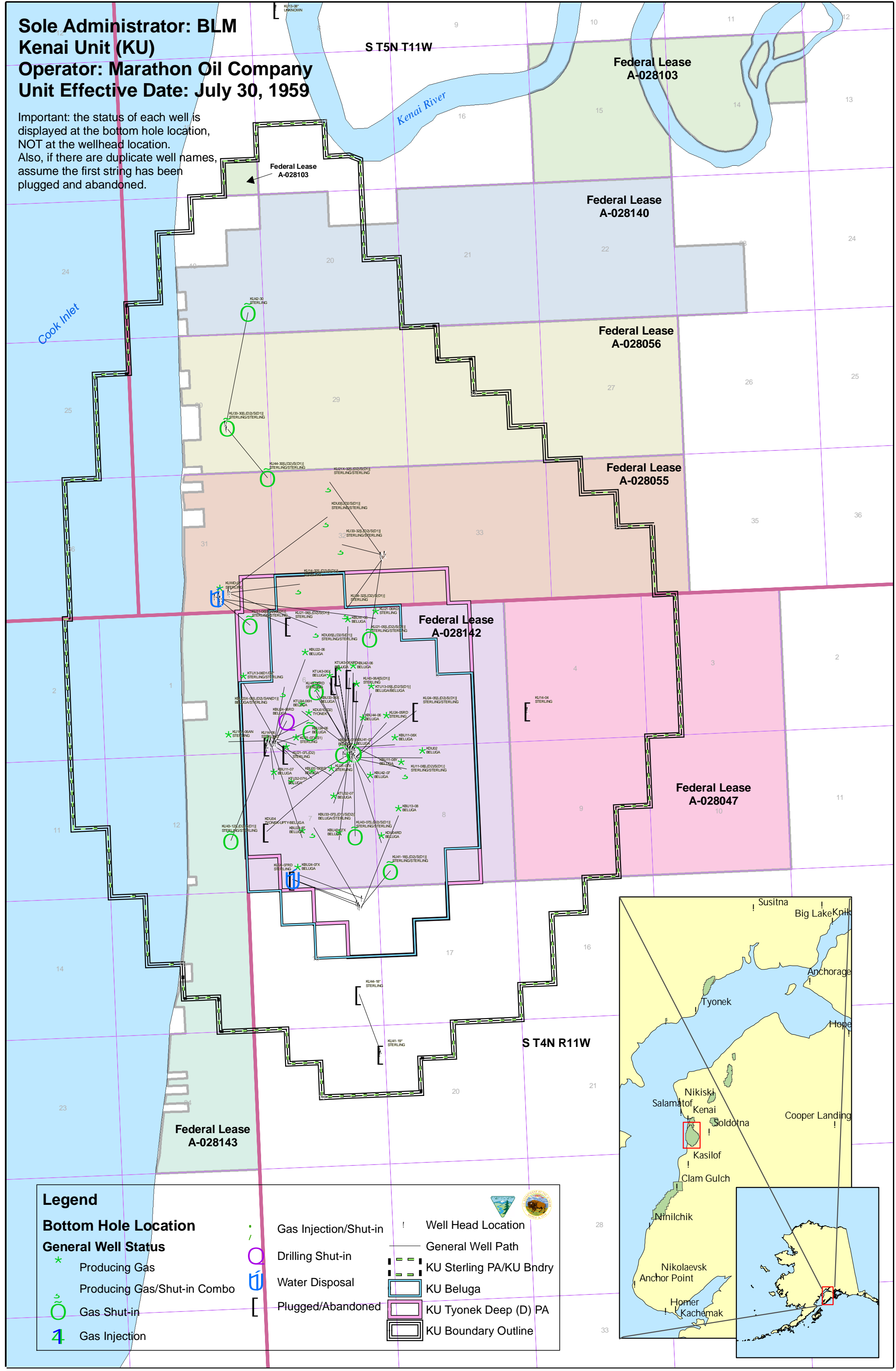


Sole Administrator: BLM
Kenai Unit (KU)
Operator: Marathon Oil Company
Unit Effective Date: July 30, 1959

Important: the status of each well is displayed at the bottom hole location, NOT at the wellhead location. Also, if there are duplicate well names, assume the first string has been plugged and abandoned.



Legend		
Bottom Hole Location	Gas Injection/Shut-in	Well Head Location
General Well Status	Drilling Shut-in	General Well Path
* Producing Gas	Water Disposal	KU Sterling PA/KU Bndry
⊕ Producing Gas/Shut-in Combo	Plugged/Abandoned	KU Beluga
⊖ Gas Shut-in		KU Tyonek Deep (D) PA
4 Gas Injection		KU Boundary Outline

