



Commercial and Institutional BMPs

Shower Better

Label

Pre-Rinse
Spray Valves

Efficiency

Excellence

WaterSense Accomplishments

Water-Smart Landscapes

Partner of the Year

Multi-Family

Partners

2012

Irrigation Controllers

Fix a Leak Week

Social Media



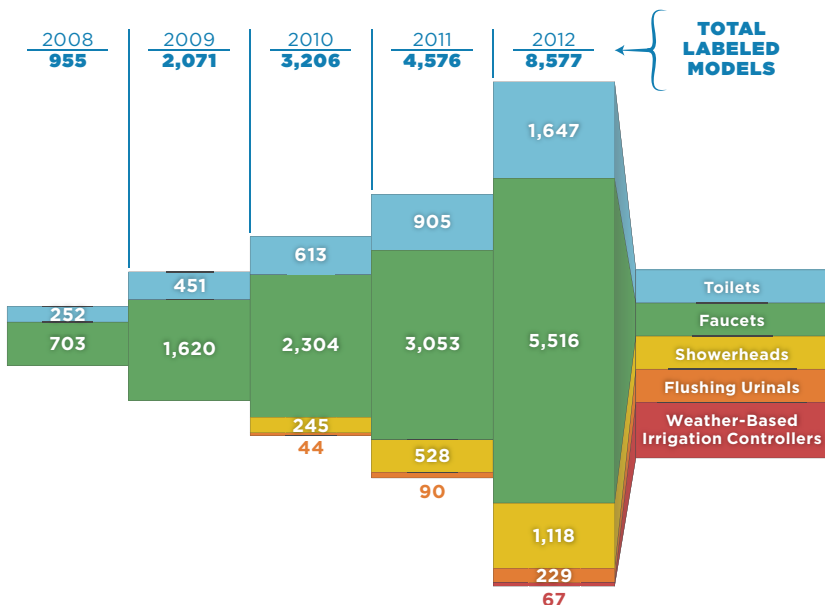
Billions & Billions Saved

WaterSense,® a partnership program sponsored by the U.S. Environmental Protection Agency (EPA), works collaboratively with companies, organizations, and communities to encourage innovation in manufacturing and support sustainable jobs for American workers. Since 2006, the WaterSense label has made it easy for consumers to find high-performing, water-efficient products. Across the country, millions of Americans are saving water, energy, and money by installing WaterSense labeled products in their homes and businesses.

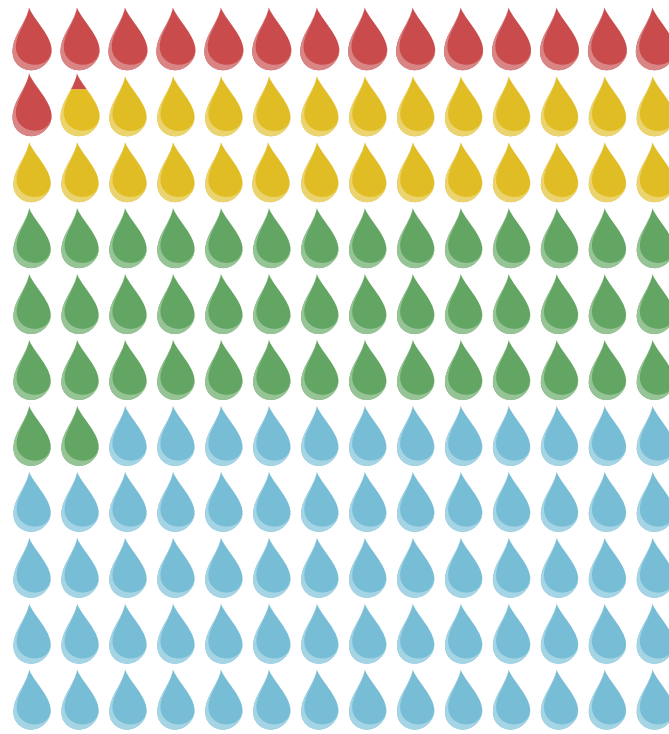
WaterSense Labeled Products



Ever since the first WaterSense labeled toilets hit store shelves in 2007, more and more product types have earned the WaterSense label, and the total number of WaterSense labeled models has continued to grow.



487 billion



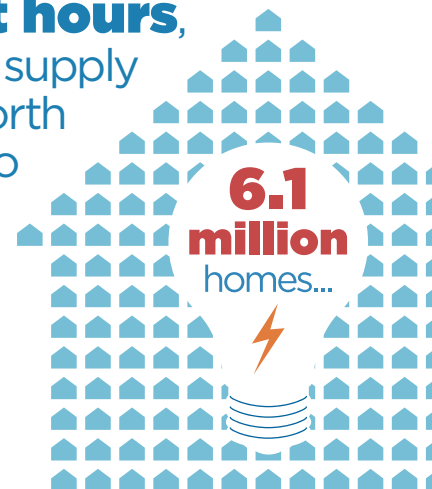
That's enough water to supply
in **Colorado** and
for a year

WaterSense has helped reduce
the amount of **energy needed**
to heat, pump, and treat water by

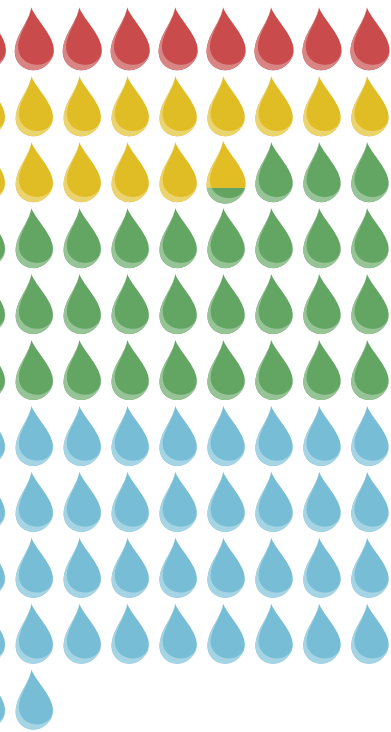
64.7 billion

kilowatt hours,

enough to supply
a year's worth
of power to
more than



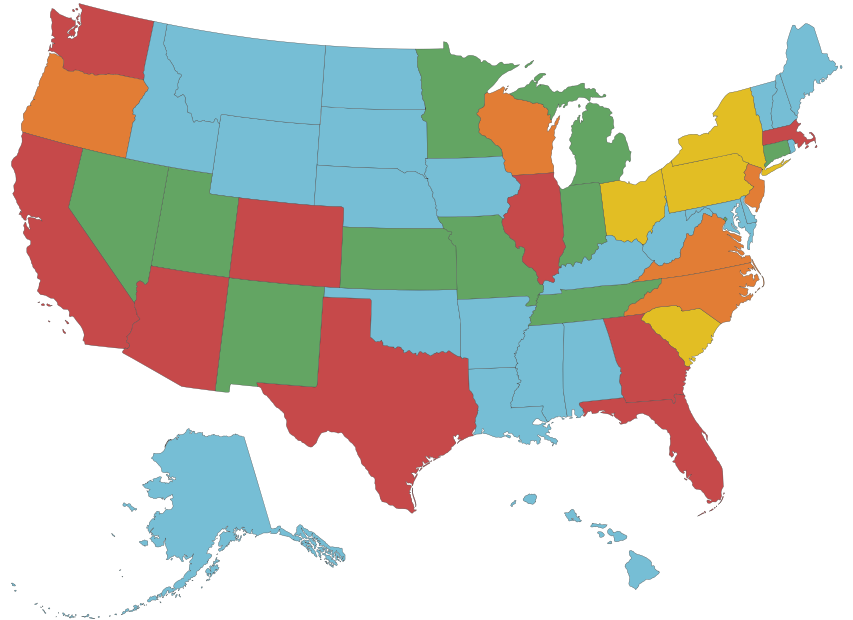
on gallons of water saved since 2006!



2007 - 2009
2010
2011
2012

202
billion
gallons
saved in
2012

WaterSense has more than **1,350** organizational partners...



Partner Totals by State

1 - 9 10 - 19 20 - 29 30 - 39 40+

supply all the homes
and **Arizona**
ear!

...and more than **1,350**
irrigation partners
across the country

duce
ed
y

...eliminating
24 million
metric tons
of greenhouse gas
emissions...



...the equivalent
of planting nearly
606 million
trees...



...and **saving**
consumers
\$8.9 billion
in water and energy bills

Multi-Family Homes Can Earn the WaterSense Label

In 2012, WaterSense updated its new homes program to include multi-family units. Like the more than 200 families now living in WaterSense labeled single-family homes, apartment and condominium dwellers can save up to 50,000 gallons of water per year and up to \$600 annually on utility bills compared to a traditional home.



*Potential indoor savings of a WaterSense labeled new home compared to a typical existing home. Potential savings from WaterSense labeled new homes are not considered in the program's total annual savings numbers.

Water-Smart Landscape Photo Gallery

The WaterSense Water-Smart Landscape Photo Gallery that launched in 2012 showcases beautiful landscapes that are water-efficient and low-maintenance. Visit www.epa.gov/watersense/outdoor/landscape_photos.html to be inspired.



Venice, CA



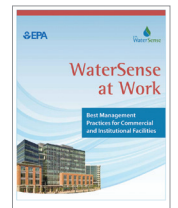
Pasadena, CA



Pasadena, CA

Commercial and Institutional Best Management Practices

WaterSense released *WaterSense at Work: Best Management Practices for Commercial and Institutional Facilities* to help facility owners, operators, designers, and managers better understand and manage their water use, establish an effective water management program, and identify products and practices that can reduce water and energy use. By taking steps to use less water, commercial and institutional facilities can save on operating costs and get a green building edge.



WaterSense in Social Media

WaterSense continued expanding its social media reach, with nearly 10,000 Facebook fans and Twitter followers by the end of 2012. Hosting its first Fix a Leak Week "Twitter party" on March 12, 2012, WaterSense saw #fixaleak trend second in the United States, and #fixaleak was tweeted by WaterSense and its partners more than 1,000 times. During summer's hottest months, six national bloggers from the *Huffington Post* to *Big Green Purse* reached more than 32,000 followers with WaterSense's outdoor water-saving tips.



What's Next?

In 2013, WaterSense will ramp up its activity in the commercial sector. The final specification for commercial pre-rinse spray valves is slated for release in late 2013, and EPA is currently looking into developing a specification for flushometer-valve toilets. WaterSense will also look to label additional outdoor products with the release of a notice of intent to develop a specification for soil moisture-based control technologies.