



United States Department of Agriculture
National Agricultural Statistics Service



Hogs & Pigs Inventory
December 1, 2016

Executive Briefing



Survey Overview



December Hogs & Pigs

Data Collection Period	November 30 – December 13
Sample Size	10,452
Collection Methods	Mail, Telephone, Internet, Face-to-Face Interview
Primary Data Items	Total Inventory: by class, weight group, and quarter; Sows Farrowing; Pig Crop; and Pigs per Litter



U.S. Hogs & Pigs Revisions



Survey	Item	Initial Estimate (1,000 head)	Previous Revision (1,000 head)	Current Revision (1,000 head)	Net Revision (1,000 head)	Current Estimate (1,000 head)
June 1, 2016	All Hogs & Pigs	68,381	+40 0.1%	+860 +1.3%	+900 +1.3%	69,281
	Pig Crop	30,347		+750 +2.5%		31,097
September 1, 2016	All Hogs & Pigs	70,851		+435 +0.6%		71,286



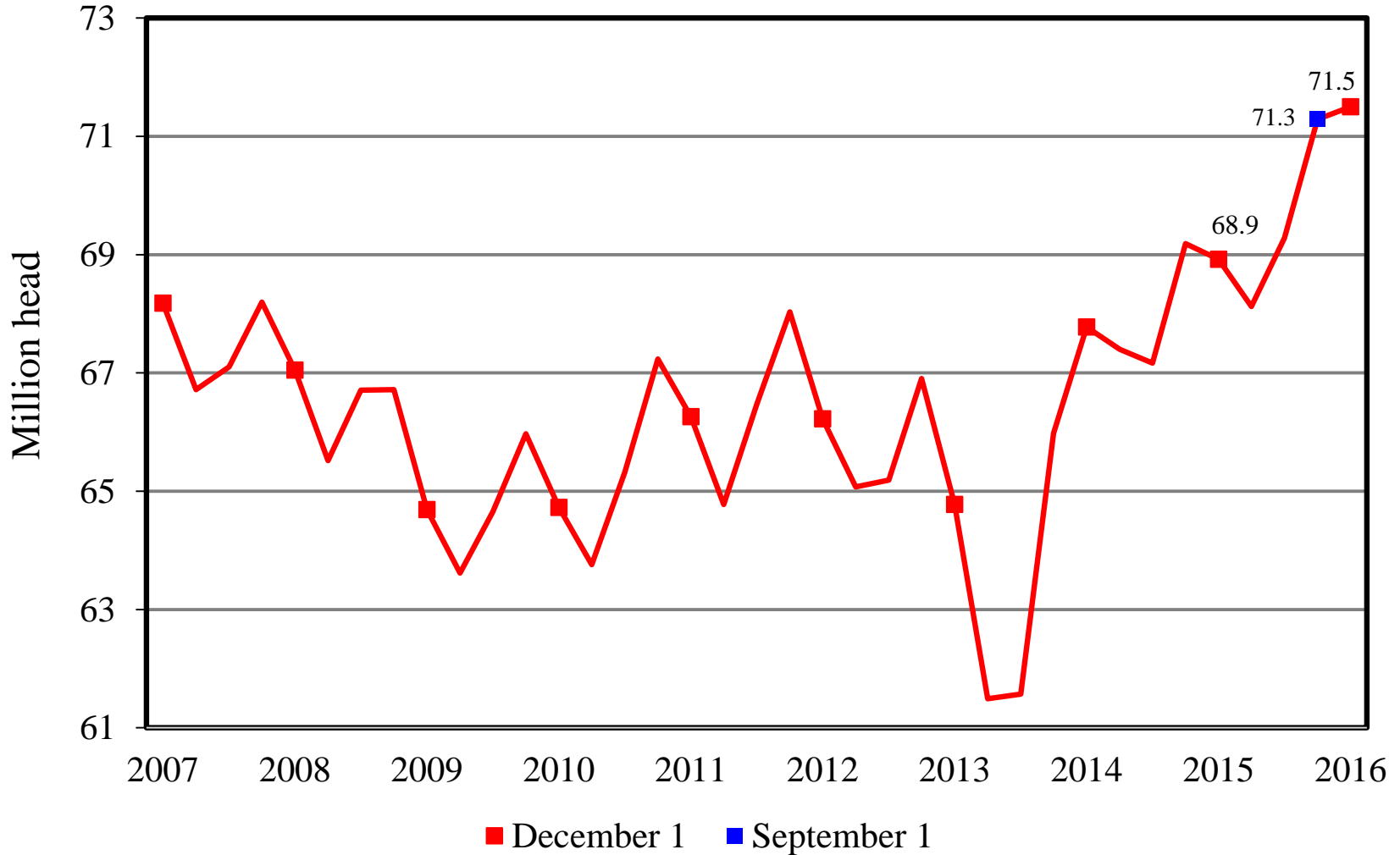
U.S. Hogs & Pigs December 1



Item	2015	2016	% PY
	1,000 head		
All Hogs & Pigs	68,919	71,500	104
Breeding Hogs	6,002	6,090	101
Market Hogs	62,917	65,410	104
less than 50 lbs	20,008	20,882	104
50 -119 lbs	17,262	18,037	104
120 -179 lbs	13,370	13,911	104
180 lbs & over	12,276	12,580	102
Sows Farrowed	2,929	3,043	104
Pig Crop	30,848	32,333	105
	number		
Pigs per Litter	10.53	10.63	101
	1,000 head		
Dec - Feb Farrowings	2,840	2,968	101
Mar - May Farrowings	2,850	2,997	101

U.S. Quarterly Hogs & Pigs

2007 - 2016

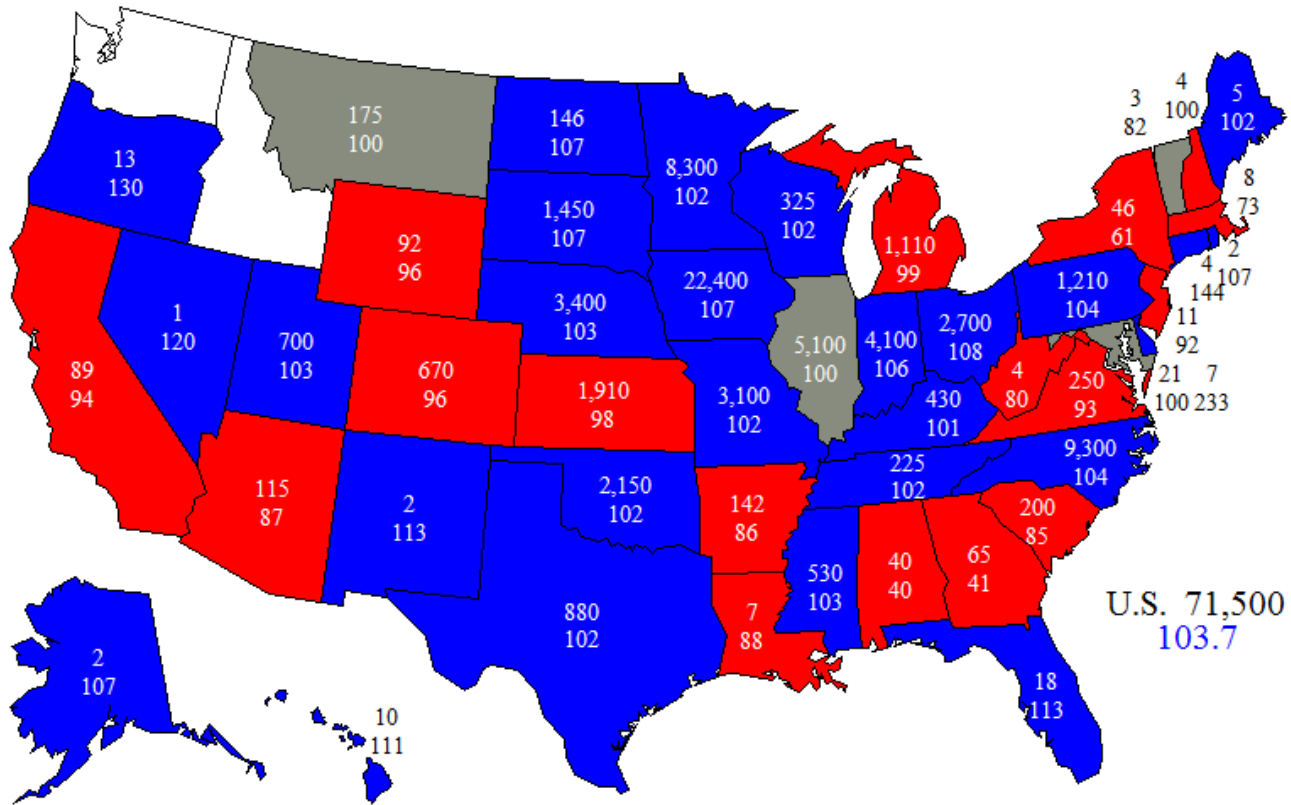


December 1, 2016

Hogs & Pigs Inventory

(1,000) Head and Percent of Previous Year

ID & WA
30
58



Inventory ■ Down ■ Up ■ No Change ■ Combined



NASS Estimates Compared to Trade Expectations Percent of Previous Year

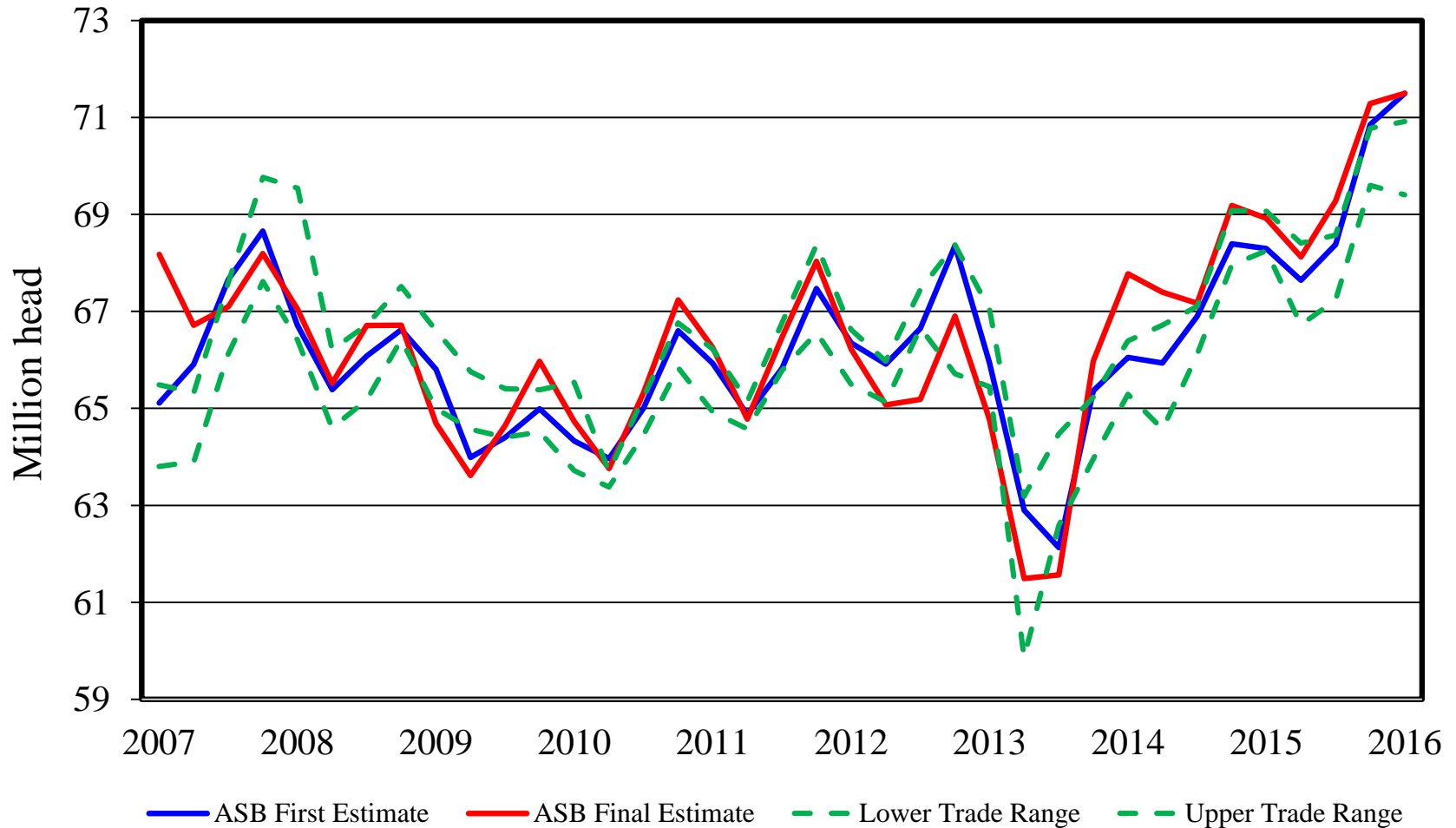


Inventory Item	NASS Estimate	Trade Average	Trade Range
All Hogs & Pigs	103.7%	101.7%	100.7% – 102.9%
Breeding Hogs	101.5%	100.2%	99.8% – 100.6%
Market Hogs	104.0%	102.0%	100.8% – 102.5%
Sep – Nov Pig Crop	104.8%	101.5%	100.9% – 102.1%
Farrowing Intentions			
Dec – Feb	101.4%	99.6%	97.0% – 100.4%
Mar – May	101.0%	100.5%	99.5% – 102.0%

All Hogs & Pigs

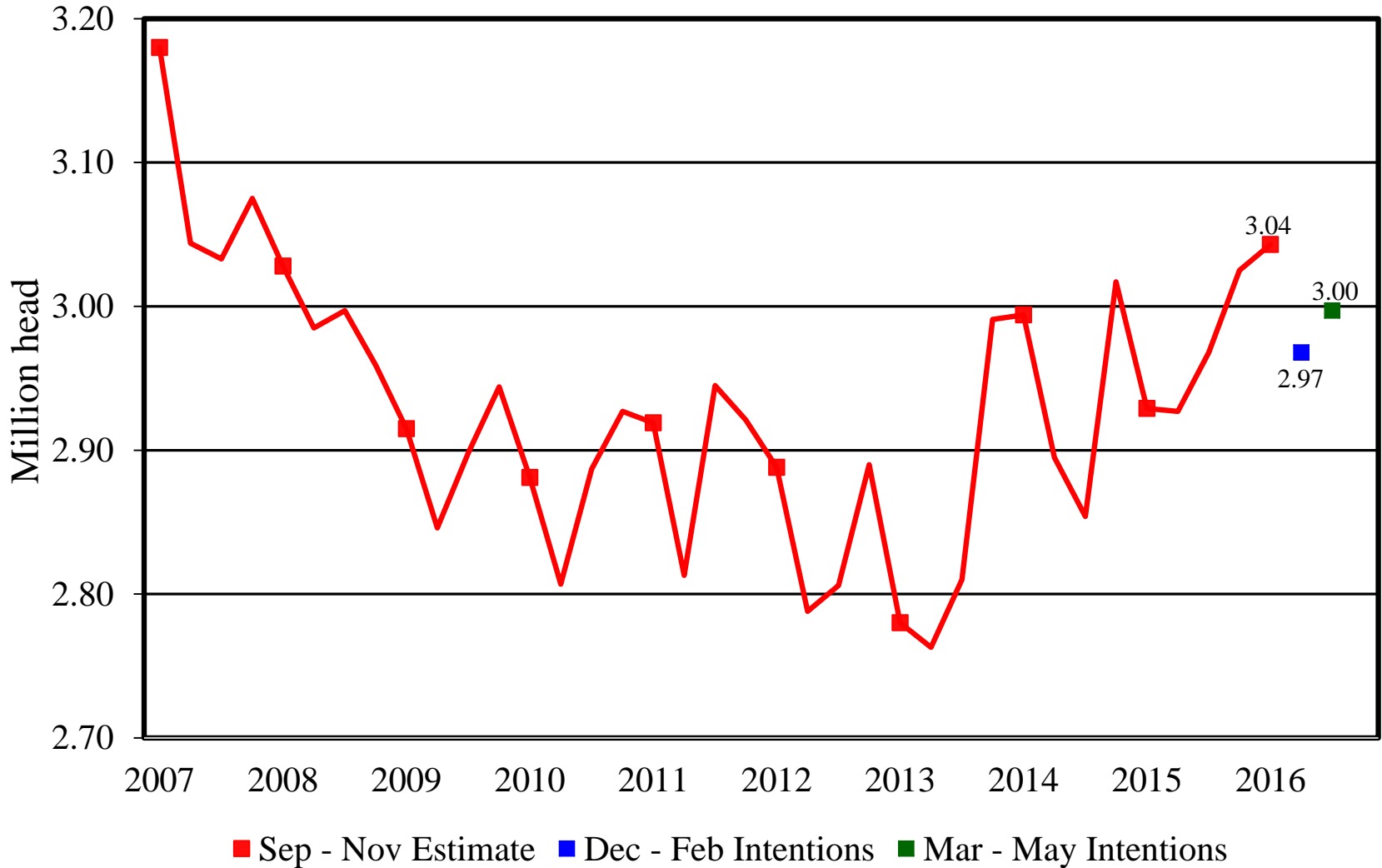
First Estimate versus Final Estimate

2007 - 2016



U.S. Quarterly Sows Farrowed

2007 - 2016





Breeding Herd Inventory

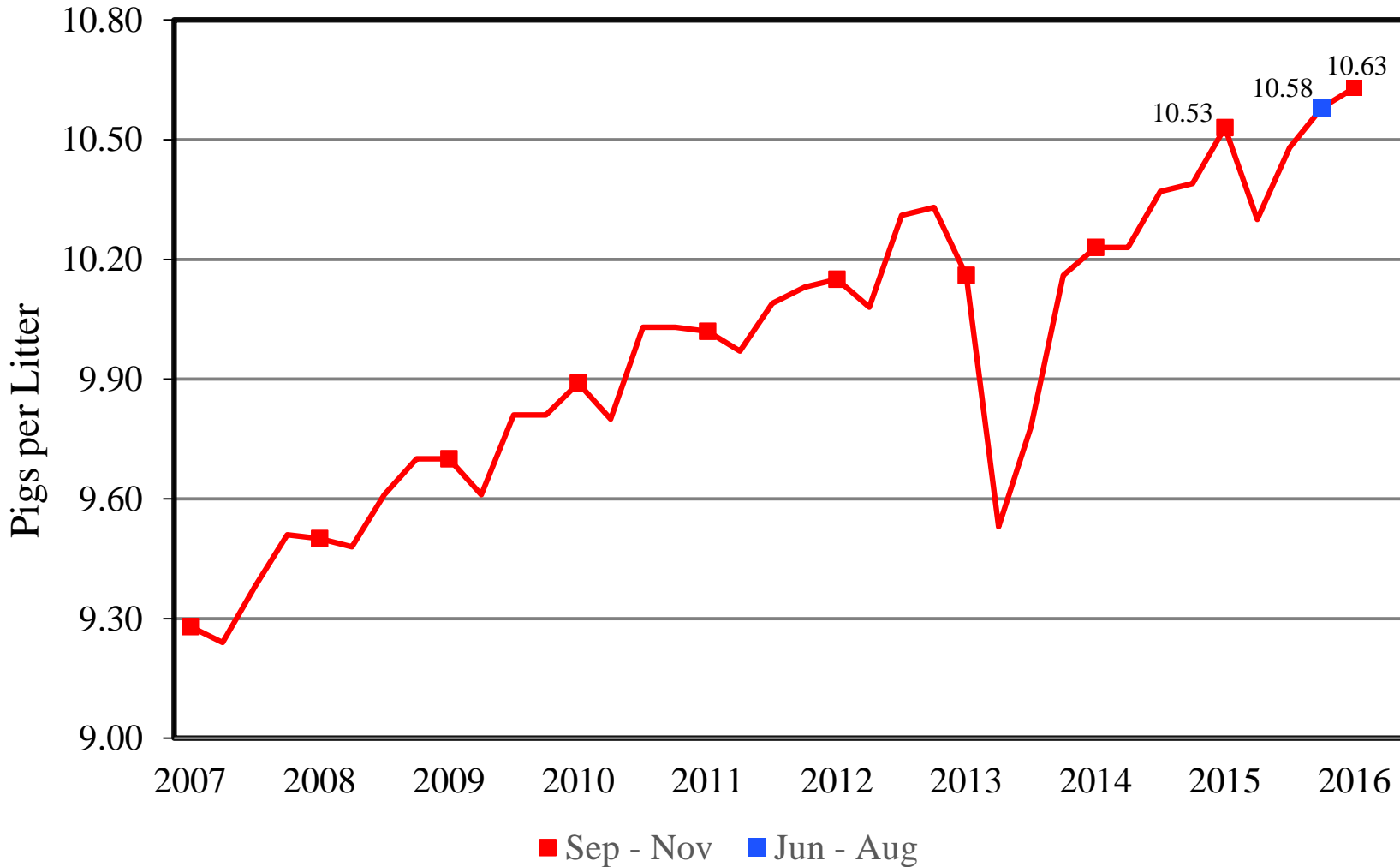
Disposition & Utilization



Year	Sep 1 Estimate (1,000 head)	Slaughter (1,000 head)	Additions (1,000 head)	Dec 1 Estimate (1,000 head)	Sow Utilization (Percent)
2007	6,208	976	1,001	6,233	51
2008	6,061	964	965	6,062	50
2009	5,875	941	917	5,850	50
2010	5,770	849	858	5,778	50
2011	5,806	880	877	5,803	50
2012	5,788	887	918	5,819	50
2013	5,816	826	767	5,757	48
2014	5,920	802	822	5,939	51
2015	5,986	772	789	6,002	49
2016	6,016	788	862	6,090	51

U.S. Quarterly Pigs per Litter

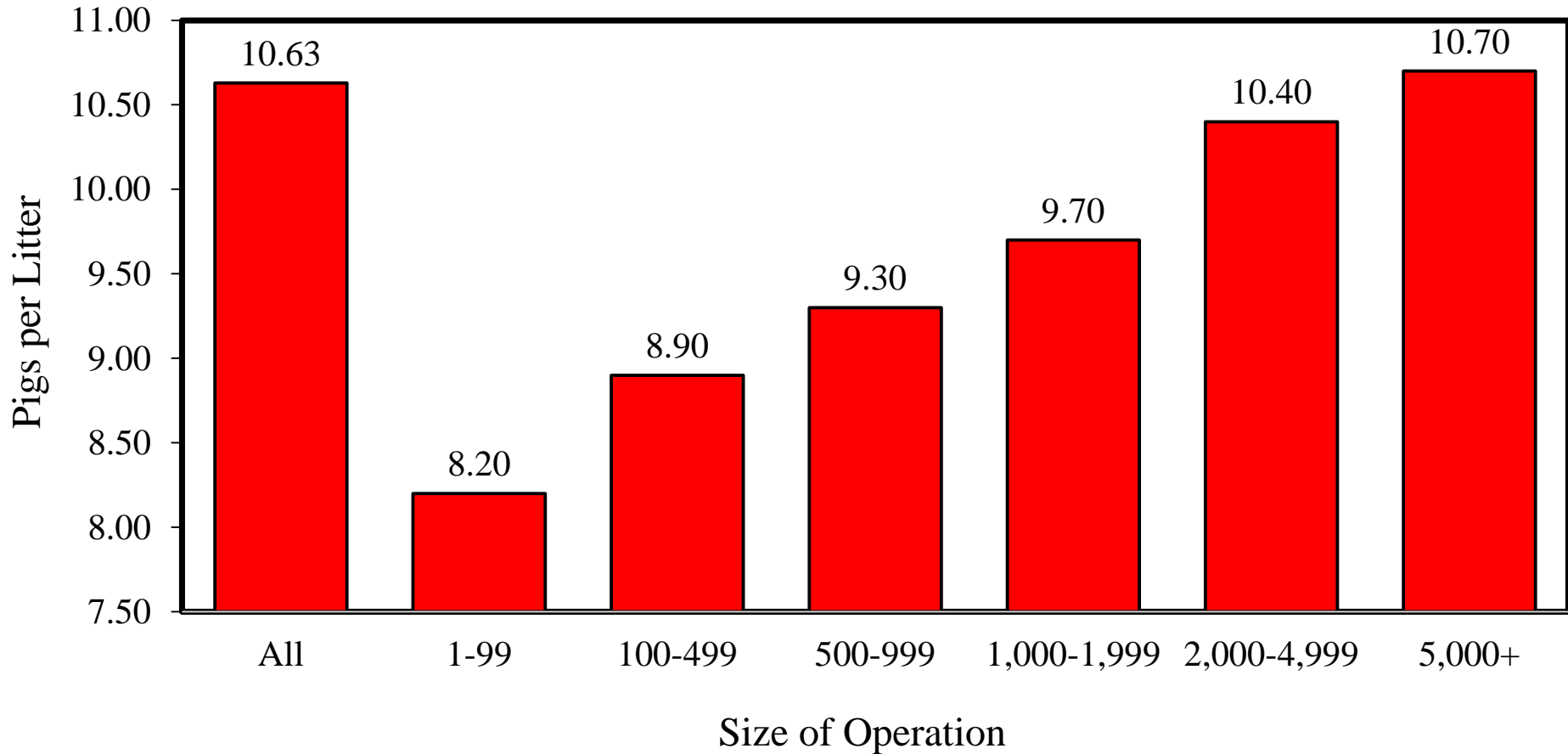
2007 - 2016



USDA U.S. Pigs per Litter by Size of Operation

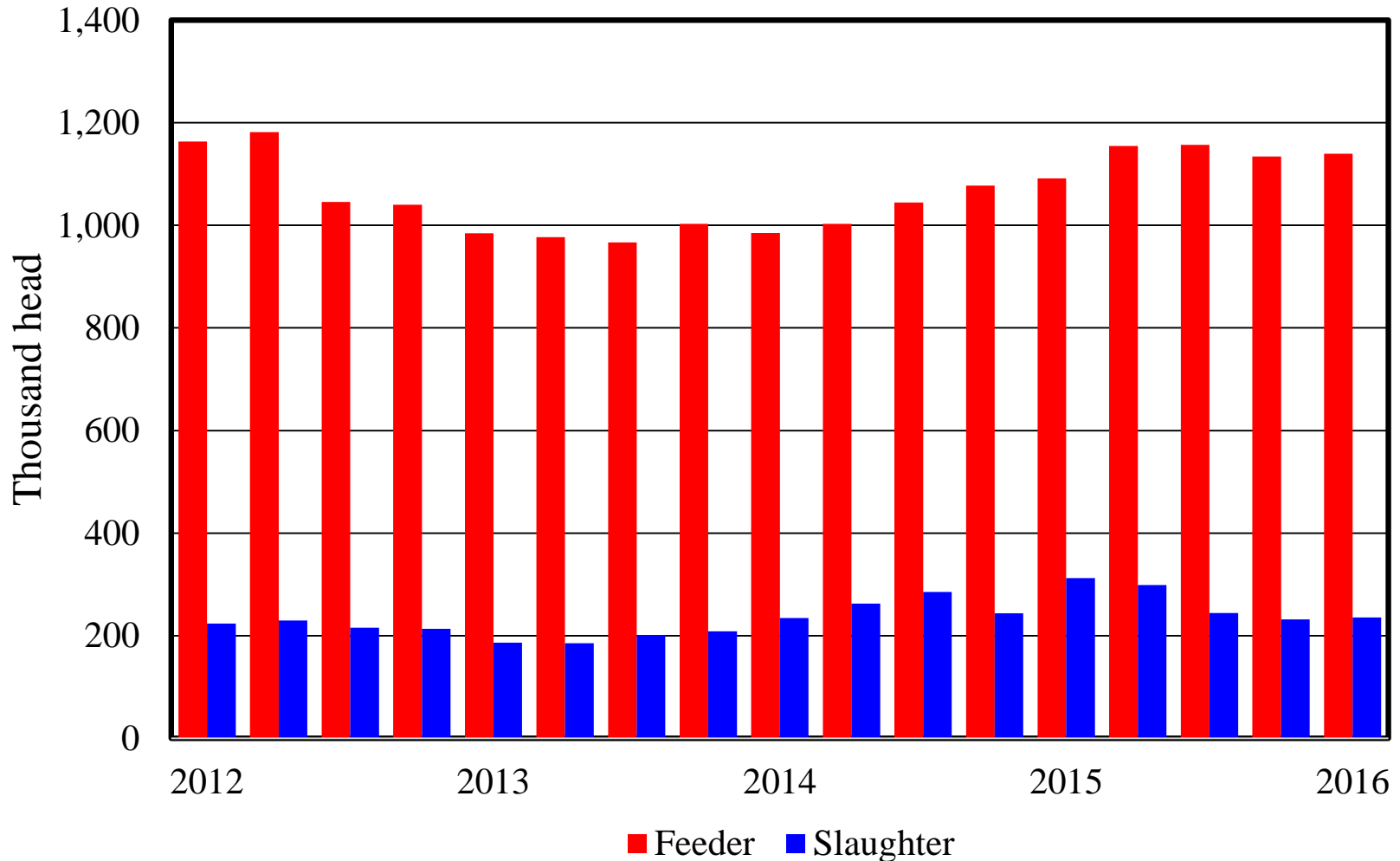


September - November 2016

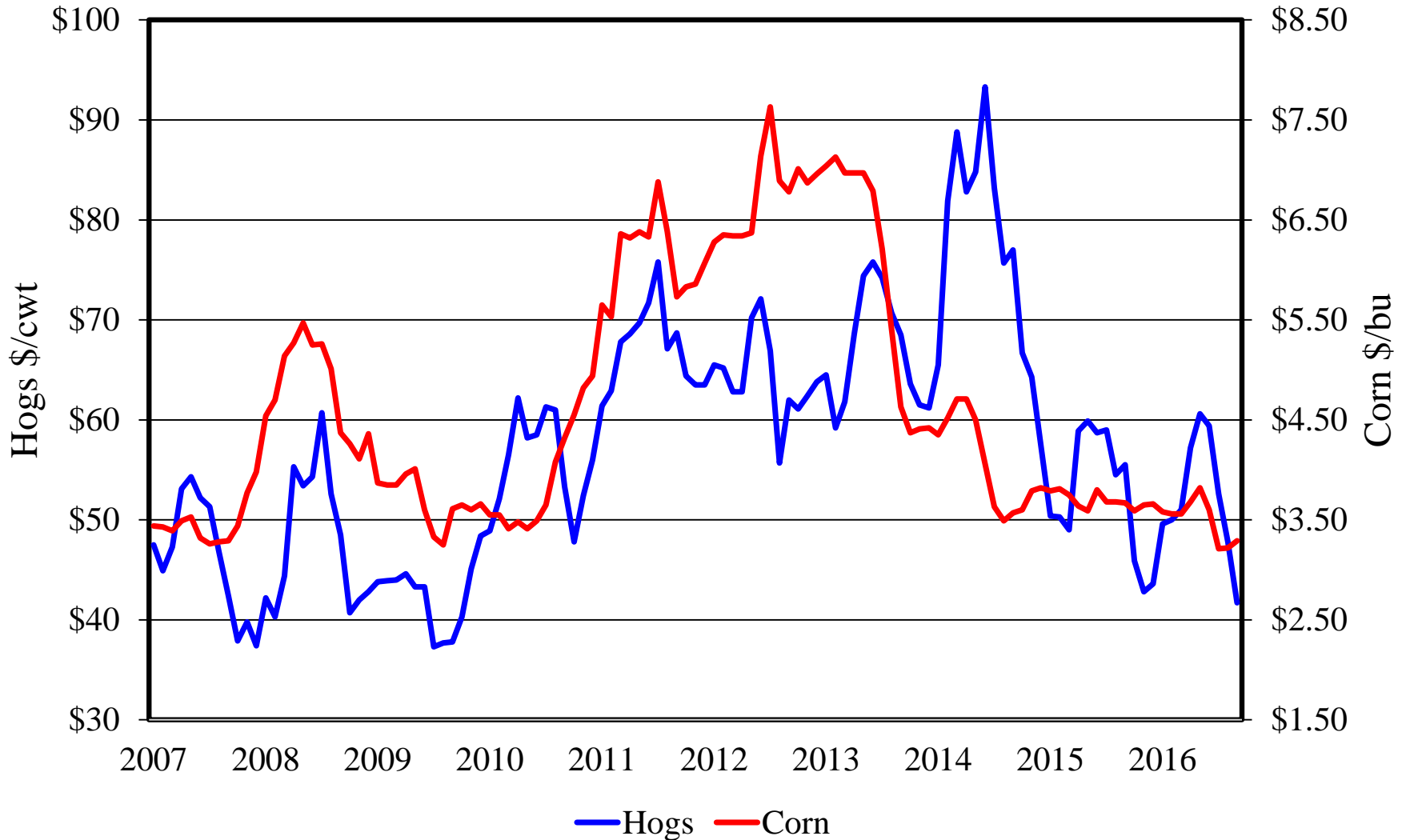


Canadian Imports by Quarter

Feeder Pigs & Slaughter Hogs



U.S. Prices Received by Farmers for Hogs & Corn





Upcoming NASS Reports



Release Date	Report Title
December 29, 2016	Agricultural Prices
January 3, 2017	Cotton System Fats & Oils Grain Crushings
January 12, 2017	Crop Production Crop Production Annual Grain Stocks
January 24, 2017	Milk Production
January 27, 2017	Cattle on Feed
January 31, 2017	Cattle



United States Department of Agriculture
National Agricultural Statistics Service



All Reports Available At
www.nass.usda.gov

For Questions
(202) 720-3570
(800) 727-9540
nass@nass.usda.gov